

**Baldwin Hills Conservancy (BHC)**  
**NOTICE OF PUBLIC MEETING**  
***The meeting of the Baldwin Hills Conservancy will be held***  
***Friday, February 24, 2012 from 10:00 a.m. - 12:00 p.m.***  
**Kenneth Hahn State Recreation Area**  
**Community Center**  
**4100 South La Cienega Blvd.**  
**Phone (323) 298-3660**

**Teleconference Location:**  
**Natural Resources Agency**  
**1416 Ninth Street, 13<sup>th</sup> Floor**  
**Conference Room 1305**  
**Sacramento, CA 95814**

**10:00 am: CALL TO ORDER Dr. Allan Boodnick, Chairman**

**MEETING AGENDA**

PUBLIC COMMENTS ON AGENDA OR NON-AGENDA ITEMS WILL BE CALLED PRIOR TO ACTION ITEMS

***Public Comment and Time Limits: If you wish to speak on an agenda item cards are available near the door to the meeting room. Individuals wishing to comment will be allowed up to three minutes to speak. Speaker times may be reduced depending on the number of speakers.***

1. Call to Order – Dr. Allan Boodnick, Chair
2. Roll Call – Gloria Dangerfield, Executive Secretary
3. Approval of Minutes (January) – Dr. Allan Boodnick, Chair
4. Consideration of a resolution authorizing a grant of BHC Proposition 84 funds to the City of Culver City for design development of a public access ramp at the Ballona Creek Bike path and Higuera Street Bridge – David McNeill, Executive Officer
5. Presentation on the supplemental soil investigation results for the Eastern Ridge Expansion Project site – Bruce Garbaccio, Engineering Geologist, Department of Toxic Substances Control
6. Presentation on BHC design development and capital improvement priorities for 2012-13 – David McNeill, Executive Officer

7. Proposed Ad Hoc Committees – Dr. Allan Boodnick, Chair
  - a. Board Development
  - b. Fundraising
8. Executive Officer Report – BHC Staff Representatives
9. Board Member announcements or agenda items for future meetings

Next meeting is tentatively scheduled for April 6, 2012 at 10:00 am.

## **ADJOURNMENT**

In accordance with the Americans with Disabilities Act of 1990, if you require a disability related modification or accommodations to attend or participate in this meeting, including auxiliary aids or services, please call Gloria Dangerfield at the Conservancy at (323) 290-5270 at least five days prior to the meeting. For more information about the Conservancy, you may visit our website at **[www.bhc.ca.gov](http://www.bhc.ca.gov)**

**MINUTES OF THE PUBLIC MEETING  
of the  
BALDWIN HILLS CONSERVANCY  
January 20, 2012**

**CALL TO ORDER**

The public meeting of the Baldwin Hills Conservancy was called to order by Chair Allan Boodnick, at 10:00 a.m. The meeting was held inside the Community Center at Kenneth Hahn State Recreation Area, 4100 South La Cienega Blvd., Los Angeles, CA 90056.

**I. Roll Call:**

**Members Present:**

Julie Alvis, Chair Allan Boodnick, Ronilee Clark, Lloyd Dixon, Russ Guiney, Vice Chair Allan Kingston, Robert Jones, Starlett Quarles, Sara Amir, Patrick Reynolds, Barbara Romero (arrived after roll) and Greg Scott.

**Members Absent:**

Pedro Reyes, Bobbie Parks, Supervisor Mark Ridley-Thomas, Joan Cardellino, and Patricia O'Toole.

**Staff Present:**

David McNeill, Gail Krippner, Gloria Dangerfield, and Rosana Miramontes.

**II. Introductory Remarks for 2012 – Allan Boodnick, Chair**

Chair Boodnick shared board member responses to his survey regarding the Conservancy's board meeting; 1) Discuss the year's goals, objectives and implementation at the start of the year; 2) Members to describe their background and expertise; 3) More ad hoc committee involvement by members; 4) Try to have Sacramento members in town for meetings; 5) Request agenda suggestions from members; 6) Increase member cohesion and participation; 7) Understand the Conservancy's role in relation to other entities and partners; and 8) Improve attendance. The Chair's goals; he would like to see increased board attendance and encouraged Sacramento members to attend a meeting here at least once a year, explore outside government sources for funding, publish another newsletter, expand board terms of office from two years to possibly four, secure board status for a County Supervisor designee, fill two long-standing government appointees positions, consider board and staff retreat to accomplish these goals, and increase the Baldwin Hills Conservancy staff by one.

**III. Election of Board Officers Pursuant to Public Resources Code Section 32558 – Allan Boodnick, Chair**

Per the code for electing officers, Member G. Allan Kingston was nominated for Vice Chair by the ad hoc nominating committee. The Chair called for any other nominees and hearing none, called for the vote to elect Member Kingston as Vice Chair. All ayes.

**IV. Presentation to Lloyd Dixon Recognizing His Service as Past Chair of the Baldwin Hills Conservancy – Allan Boodnick**

The Chair presented an award to Member Lloyd Dixon on his term as Chair and his accomplishment for the past year. Member Dixon accepted the award and stated that he was pleased he was to be part of what was done during his term as chair, particularly acquisition of the school site, Jefferson Boulevard improvements as well as the Park to Playa. He also stated he enjoyed working with staff and fellow board members.

**IVa. Presentation to Greg Scott Recognizing His Service as Board Member of the Baldwin Hills Conservancy – Allan Boodnick**

The Chair presented an award to Member Greg Scott for his service on the board, and noted Member Scott was a fine replacement for former member, Paul Mount, with his technical assistance and expertise of land/oil issues. Member Scott stated that it had been a pleasure being a board member and representing State Lands Commission and being assisted by David McNeill and staff. He introduced Marina Voskanian, Assistant Division Chief for State Lands Commission, who will be his replacement on the Baldwin Hills Conservancy board.

**V. Approval of Minutes (October, December) – Allan Boodnick, Chair**

The Chair stated that a correction needed to be made to December's minutes; it has him as the Chair and it should be Lloyd Dixon. He called for the motion to approve the minutes with the correction as stated. Motion was made by Member Kingston and was seconded. The Chair called for the vote; all ayes. Motion carries.

**VI. Consideration of a Resolution Authorizing a Grant of BHC Proposition 40 Funds to the City of Los Angeles Department of Recreation and Parks for Water Quality and Access Improvements at Norman O. Houston Park – David McNeill, Executive Officer**

Mr. McNeill stated that Resolution 12-01 was for a grant (not to exceed 1.8 million dollars) of Prop 40 funds for added improvements to Norman O. Houston Park that would include ADA compatible trail connectivity, shade structures, restrooms, bio-swales, landscaping and additional parking. Motion was made by Member Kingston to approve the resolution and was seconded. The Chair called for vote; all ayes. Motion carries.

**VII Disaster and Possible Action on the BHC Disaster Recovery Plan for Information Technology Compliance and Certification – David McNeill, Executive Officer**

Mr. McNeill stated the Information Security Office of the Natural Resources Agency would be picking up some responsibilities in regards to the Conservancy's Information Technology and as part of the process of designation; a recovery plan for addressing potential loss of systems during a disaster is required. Motion to approve was made by Member Jones and was seconded. The Chair called for the vote; all ayes. Motion carries.

**VIII. Discussion and Possible Action on the Proposed 2012 Meeting Schedule – David McNeill, Executive Officer**

There was no action needed on this item.

**IX. Discussion and Possible Action on the Proposed**

Mr. McNeill asked Member Guiney to give an update on the Baldwin Hills Conservancy Regional Conservation Authority (BHRCA) acquisition of the school site. Member Guiney stated their plan at this point was to get public input on the site's future. Supervisor Mark Ridley-Thomas (Chair of the BHRCA) will hold public meetings; the next one is scheduled for Wednesday, January 25, 2012 at 6:30 p.m. inside the Community Center of Kenneth Hahn State Recreation Area.

Mr. McNeill continued with his written report on the following:

- Los Angeles Neighborhood Initiative (LANI) grant (La Cienega bridge entrance)
- Department of Toxic Substances Control soil sampling of the Eastern Ridgeline
- MRCA meeting on the Milton Street park design
- Eastern Ridgeline progress
- L.A. Infrastructure Academy restoration work and upcoming newsletter
- Culver City's Jefferson Street project improvement
- Bond Cash/ELPF fund

**X. Board Member Announcements or Agenda Items for Future Meetings**

Member Kingston commented on the large volume of people visiting the Baldwin Hills Scenic Overlook path from Jefferson Blvd. and is glad that Culver City is moving forward with the improvements on Jefferson.

Member Jones congratulated Members Boodnick and Kingston on their appointments as Chair and Vice Chair and is looking forward to working with them and their initiatives in the coming year.

Member Guiney reported on the damage County Parks sustained due to the recent windstorms. Although Kenneth Hahn State Recreation Area suffered very little damage, their department had a total of 1,349 trees that were either damaged or knocked down. The total value is over seven million dollars. In addition, structural damage will be over six hundred fifty thousand dollars and debris removal is over seven hundred thousand dollars.

Member Scott re-stated it was an honor to have represented State Lands Commission as a member of the Conservancy board and he would miss the association of the dedicated members and David McNeill and staff, but the board would be in capable hands with Marina Voskanian.

Member Reynolds stated that it was an honor to be associated with this great effort and group of people, and feels very privileged to be the representative for the City of Culver City. He noted that Culver City is working very diligently to complete the project on Jefferson Blvd.

Member Amir congratulated Member Scott on his retirement and thanked him for all his help and welcomed Marina Voskanian. She stated that she represents the Green Business Program for the Department of Toxic Substances Control and their department is reaching out to cities and local governments to establish certification programs; this service is free.

Member Romero stated that the California Trails Conference is scheduled for April and a panel has been scheduled to speak on Park to Playa.

Rosana Miramontes, Deputy Attorney General, reminded the board that their Form 700 annual statement is due April 2, 2012.

Member Alvis thanked the Chair for setting the board's goals for 2012 and hopes to meet the challenge to visit at least/or exceed once a year. She looks forward to working with everyone in the coming year.

Member Clark, congratulated the board, David McNeill and staff, on all the accomplishment she has seen since serving on the board. It is very impressive to see all projects nearing completion, along with the school acquisition Member Guiney discussed, and the project by the City of Los Angeles. It's great to see the Conservancy stay focused on their strategic goals and provide safe recreational opportunities within the Baldwin Hills.

**ADJOURNMENT**

There being no further business brought before the board, the meeting was adjourned at 11:23 a.m.

Approved:

Allan S. Boodnick  
Chairman

## BALDWIN HILLS CONSERVANCY

5120 West Goldleaf Circle, Suite 290

Los Angeles, CA 90056

Ph: (323) 290-5270

Fx: (323) 290-5278

www.bhc.ca.gov

---

### Memorandum

**To: Governing Board**

**Fr: David McNeill**

**Date: February 24, 2012**

**Re: Item 4:** Consideration of a resolution authorizing a grant of BHC Proposition 84 funds to the City of Culver City for design development of a public access ramp at the Ballona Creek Bike path and Higuera Street Bridge

**Recommendation:** A recommendation and resolution will be presented pending completion of the project review by the BHC Ad Hoc Committee on Wednesday, February 22<sup>nd</sup>.

**Background:** Please see the attached application for your interim consideration. The Public Works Department of Culver City has submitted an application for \$60,000 in BHC Prop 84 funds to be leveraged with \$20,000 additional planning dollars from the City's gas tax fund. The proposal features plans to design a new access ramp where the Ballona Creek Bike path meets the Higuera Street Bridge. This project is consistent with a user-based pattern is reflected in plans the board approved in the 2006 Linkage and Access Study as well as the Park to Playa Trail Feasibility Study. The project is part of a larger \$7.6 million bridge replacement and widening improvement funded by the Federal Highway Bridge Program. Bicycle lanes are included as a part of the federally funded widening project, creating an opportunity to design a much needed access point onto the creek while the bridge's design schematics are still in the development phase.

Once the committee has completed their evaluation of the required grant criteria, a recommendation will be sent for board consideration.

**State of California — The Natural Resources Agency  
BALDWIN HILLS CONSERVANCY**

*APPLICATION FOR LOCAL ASSISTANCE GRANT*

Design of Higuera Bridge Ramp to Improve Pedestrian and Bicycle Access  
to Ballona Creek

\$ 60,000

PROJECT NAME

GRANT AMOUNT

City of Culver City

\$ 80,000

9770 Culver Boulevard

ESTIMATED TOTAL PROJECT COST  
(State Grant and other funds)

Culver City, CA 90232

helen.kerstein@culvercity.org

Los Angeles

Culver City

GRANTEE (Agency and address-including zip code and email)

COUNTY

NEAREST CITY

Near 8450 Higuera St, Culver City, CA

PROJECT ADDRESS

Higuera St between Eastham Dr and Jefferson Blvd

NEAREST CROSS STREET

26

47

SENATE DISTRICT NO.

ASSEMBLY DISTRICT NO.

Grantee's Representative Authorized in Resolution:

John Nachbar

City Manager

(310) 253-6000

Name (type)

Title

Phone

Person with day-day responsibility for project (if different from authorized representative):

Helen Kerstein

Management Analyst

(310) 253-5618

Name (type)

Title

Phone

Brief description of project:

The proposed project will design a ramp from the Higuera Bridge to Ballona Creek. Once the design is complete, the City anticipates seeking funding to build the ramp along with the planned replacement of the bridge. The construction of this ramp, which was proposed in the Baldwin Hills Conservancy's Access and Linkages Study, will improve access from the Baldwin Hills Parklands to the Ballona Creek Bike Path and the ocean.

For Dev. projects Land Tenure – Project is: 0.2 acres:

For Acquisition projects-Projects will be \_\_\_\_\_ acres

\_\_\_\_\_ Acres owned in fee simple by Grant Applicant

\_\_\_\_\_ Acquired in fee simple by Grant Applicant

\_\_\_\_\_ Acres available under a \_\_\_\_\_ year lease

\_\_\_\_\_ Acquired in other than fee simple (explain) \_\_\_\_\_

0.2

\_\_\_\_\_ Acres other interest (explain) \_\_\_\_\_

Located on LA County Flood Control District Easement

I certify that the information contained in this project application form, including required attachments, is accurate.

Signed

Grantee's Authorized Representative as shown in Resolution

Date

# DESIGN OF HIGUERA BRIDGE RAMP TO IMPROVE PEDESTRIAN AND BICYCLE ACCESS TO BALLONA CREEK

*“The Ballona Creek Trail connects to the 25-mile Beach Bike Path, presenting an opportunity to link the entire Baldwin Hills Park and surrounding areas to this regional trail network, to provide a contiguous bicycle and pedestrian trail network and to reconnect natural habitat and native wildlife species in the Baldwin Hills with those of the Ballona Wetlands downstream.” – Baldwin Hills Park Master Plan*

*“The only trail in the planning area is the bicycle trail along Ballona Creek, which has very poor public access, no landscaping and no trailheads.” – Baldwin Hills Park Master Plan*

*“An additional access point at the Higuera Street overpass would provide the shortest route from the creek trail to the proposed Welcome Center at 6000 W. Jefferson.” - Baldwin Hills Conservancy’s Access and Linkages Planning Study*

## BRIEF DESCRIPTION

The proposed project will design a ramp from the Higuera Bridge to Ballona Creek. Once the design is complete, the City intends to pursue funding to build the ramp along with the planned replacement of the bridge. The construction of this ramp, which was proposed in the Baldwin Hills Conservancy’s Access and Linkages Study, will improve access from the Baldwin Hills Parklands to the Ballona Creek Bike Path and the ocean.

## PROJECT NARRATIVE

### *BENEFITS OF THE PROJECT*

*Consistency with Baldwin Hills Park Master Plan and the Baldwin Hills Conservancy’s Access and Linkages Study*

The Baldwin Hills Park Master Plan (Master Plan) calls for improved multi-modal access to the Baldwin Hills Parklands. The Master Plan notes that the Ballona Creek Bike Path represents a crucial link from the Baldwin Hills Parklands to the Ocean and the 25-mile Beach Bike Trail, and argues that “this critical connection can provide a unique recreational resource to millions of residents in urban Los Angeles County.” However, the Master Plan, also points out that there is currently limited public access to the Bike Path.

Like the Master Plan, the Baldwin Hills Conservancy’s Access and Linkages Planning Study (Study) argues for improved access and connectivity to the Baldwin Hills Parklands and refers to physical barriers that currently prevent widespread use of the tremendous regional resource that is the Park. The Study also provides a more detailed vision for how to link the Baldwin Hills Parklands together from the Stocker Corridor, through the Baldwin Hills Scenic Overlook, to the Ballona Creek Trail and Bike Path. Specifically, the Study identifies that need for an additional access point at the Higuera Street Bridge/Overpass, which would be the closest connection to the proposed Welcome Center. The proposed project would design this access point, thus bringing this component of the Study closer to fruition.



### *Consistency with Purposes of Funding Sources (Increasing Access and Enjoyment of the Coastal Resources of the State)*

The project will design a new linkage from Baldwin Hills Parklands to the Ballona Creek Bike Path at Higuera Street. The Bike Path travels roughly 6 miles west of Higuera Street where it intersects Beach Bike Trail. The Beach Bike Trail goes along the beach from Will Rogers State Beach to Torrance, providing roughly 25 miles of access to the coastline by bike or foot. By increasing connectivity to the Ballona Creek Bike Path and the Beach Bike Trail, the new ramp will improve access to and enjoyment of Southern California's coastal resources.

Higuera Street is a particularly important and logical place for an additional connection to the Bike Path. In addition to providing the closest connection to the proposed Welcome Center, as described previously, the Higuera Street access point would also provide the closest Ballona Creek Bike Path connection to the Baldwin Hills Scenic Overlook entrance (approx. 0.4 miles). This connection would be made via soon-to-be constructed bike lanes along Jefferson Boulevard (included as part of a separate Baldwin Hills Conservancy-funded grant project) and Higuera Street. The addition of this access point will also reduce the roughly 1.1 mile distance between Bike Path connections in this area (from National to Duquesne) to 0.4 miles (from National to Higuera) and 0.7 miles (from Higuera to Duquesne), thus increasing the Bike Path's functionality and connectivity. Furthermore, this access point will improve the connection to the Creek and Bike Path from the surrounding area, including Culver City's Hayden Tract area, which is a significant employment center.

### *Urgency, Readiness, and Need*

The City of Culver City is currently undertaking a project to replace the aging Higuera Bridge, which is considered "functionally obsolete." As part of this replacement, the City plans to widen the bridge. The replacement bridge will include two traffic lanes in each direction, bike lanes in each direction and sidewalks and standard guardrails. The preliminary engineering has been completed with the addition of a bike ramp in mind (see Attachment 3 for a preliminary schematic of the ramp). By providing funds to design the ramp, the design for the bridge and ramp can be completed simultaneously, thus ensuring that the designs are complementary and facilitating the construction of both facilities simultaneously, pending funding availability.

### *Support from the Community and Greater Than Local Interest*

This project is consistent with the City's adopted Bicycle and Pedestrian Master Plan (BPMP). The BPMP summarizes the support for increasing access to the Ballona Creek Bike Path that was expressed by community members as part of the BPMP process and specifically recommends creating a new path access point at Higuera Street. It also includes pursuing "grant funding for design and construction of a ramp at the Higuera Street Bridge to the Ballona Creek Bike Path" as a specific BPMP action item.

Additionally, the City has received a number of formal support letters from community organizations such as the Culver City Bicycle Coalition, Ballona Creek Renaissance, and Sierra Club (see Attachment 6). These support letters further demonstrate the breadth of interest in the project.

## **PROJECTED TIMELINE**

Preliminary Engineering: Complete (see Attachment 3 for preliminary design of ramp)

Design/Environmental Studies: September 2012 to September 2013

Construction: TBD

## PROJECT COST ESTIMATE

The cost of the design is estimated to be 15% of the construction cost of the project, consistent with design costs for projects of similar engineering complexity. Note that this ramp will require structural engineering work and the design of a significant retaining wall to allow for the addition of a ramp of acceptable slope. The construction cost is estimated as follows:

### *Ramp Construction:*

	Cost Estimate
Retaining Wall	\$250,000 <sup>1</sup>
Concrete Removal	\$40,000
Structural Excavation	\$80,000
Structural Fill	\$10,000
Concrete Replacement and Paving	\$20,000
Gate and Fence	\$45,000
Subtotal	\$445,000
Contingency (approx. 15%)	\$70,000
Total	\$515,000
<b>Design (approx. 15%)</b>	<b>\$80,000</b>

The estimated project design cost, requested grant amount, and applicant match are as follows:

### *Ramp Design*

	Amount
<b>Design Cost</b>	<b>\$80,000</b>
<b>Grant Request</b>	<b>\$60,000</b>
<b>Applicant Match</b>	<b>\$20,000</b>

---

<sup>1</sup> Could change based on the exact length and height of the retaining wall that is required, which will be determined during the design process. This estimate is based on preliminary design work (see Attachment 3).

At this time, Culver City is seeking funding for design of the ramp. The applicant match for the design cost is anticipated to come from the City's Gas Tax funds. After design is complete, the City anticipates seeking grants and other funding for the construction of the ramp.

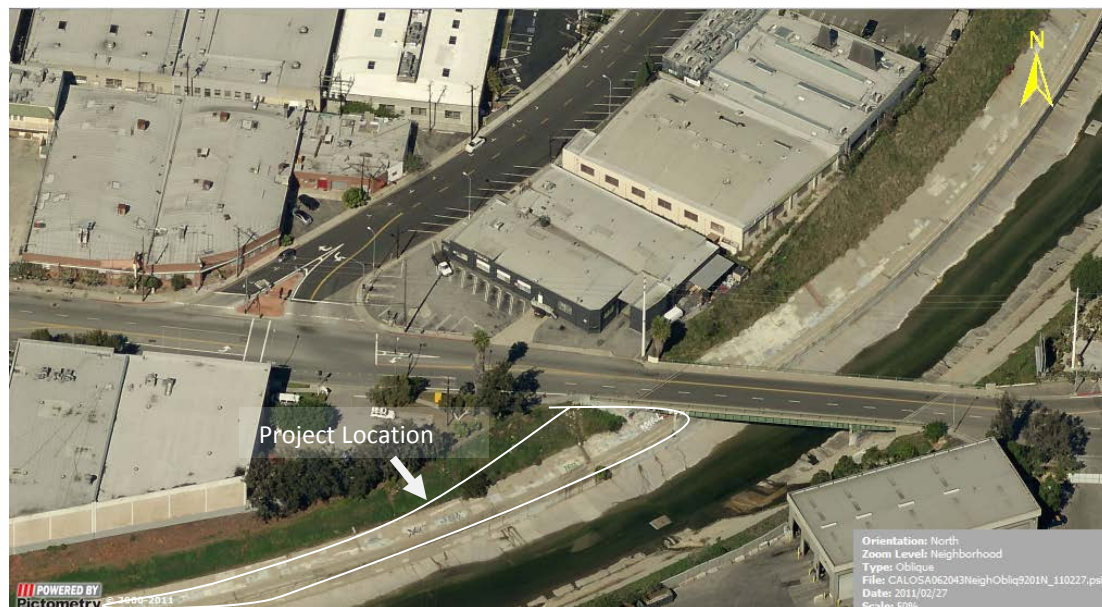
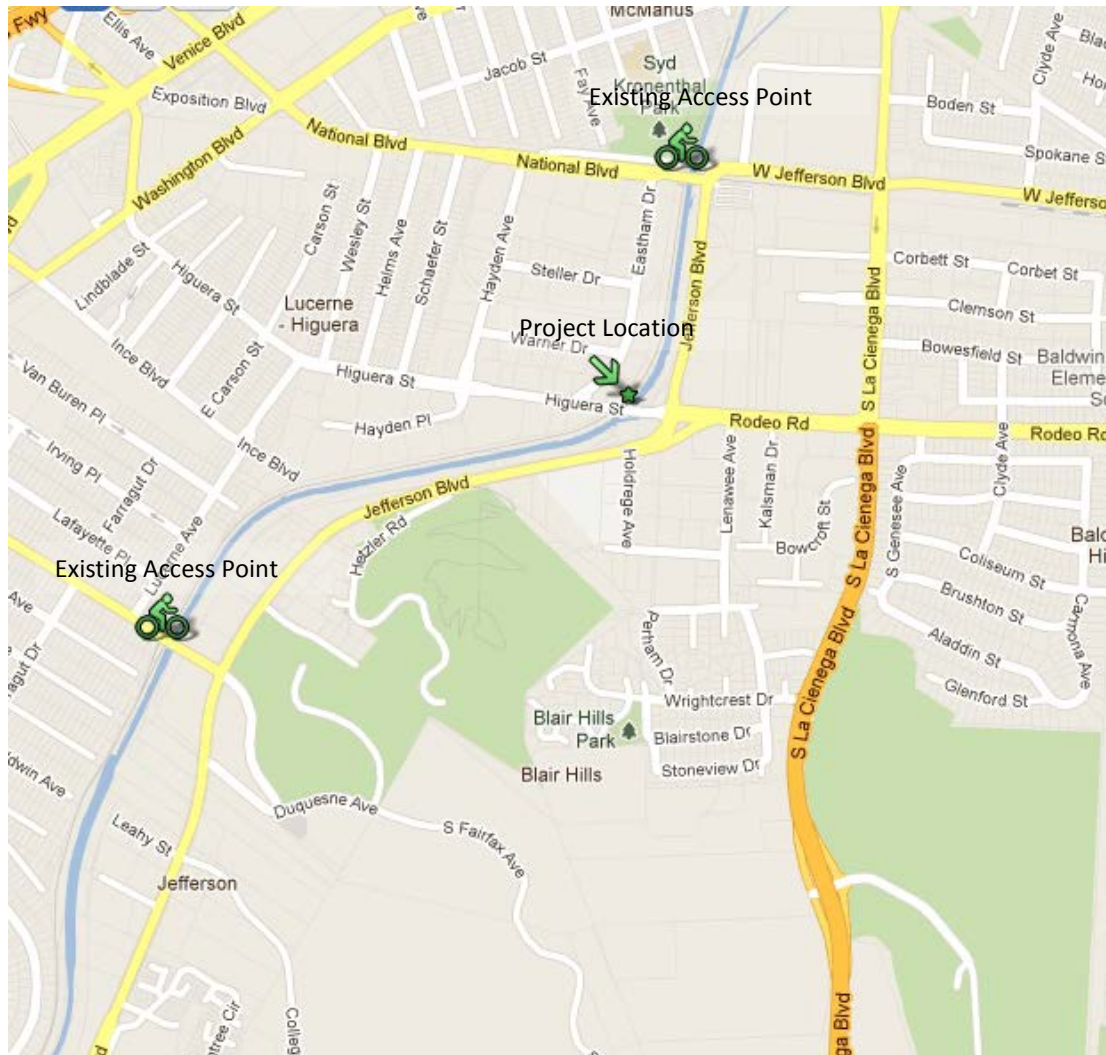
The City has already secured federal funds for the replacement of the bridge itself. These funds are anticipated to be matched by roughly \$880,000 in local dollars, for a total construction and design cost of \$7.6 million. The new, wider bridge will include bike lanes as mentioned previously.

## **APPLICANT BACKGROUND /RELATED EXPERIENCE**

The City of Culver City has extensive experience managing similar projects. The Public Works Department manages a multi-million dollar Capital Improvement Project budget. This budget funds the design and construction of major projects. In the last year, for example, the Department completed several major projects, including: Sepulveda Blvd. Widening (approx. \$5.6 million), Ballona Creek Bikeway and Landscaping Improvement Project (approx. \$900,000), and Braddock Pump Station (approx. \$2.4 million). The last bridge project that the City completed was the replacement of the pedestrian bridge near Ocean Drive and Westwood Boulevard in early 2004 (approx. \$750,000).

The City has the financial resources to undertake this project. The City's revenues for FY 11/12 are anticipated to be over \$157 million, roughly \$80.6 million of which are expected to go to the General Fund. The City receives roughly a million dollars per year in Gas Tax funds, a portion of which is anticipated to be used as the City's match for the design of the proposed ramp.

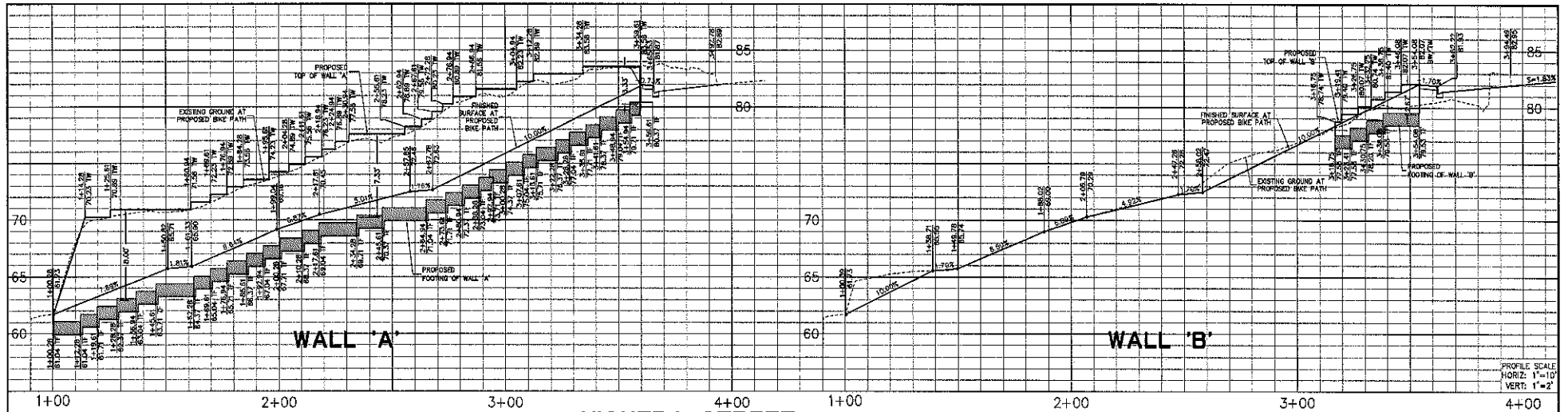
## A map of Los Angeles, California, showing major freeways and local streets. The map is color-coded by district: Wilshire (pink), Santa Monica (orange), Beverly Hills (yellow), and Hollywood (green). Major freeways shown include I-5 (Golden State), I-10 (San Diego), I-405 (San Diego), I-101 (Ventura), and I-10 (San Diego). Local streets shown include Beverly Blvd, Wilshire Blvd, Santa Monica Blvd, Pico Blvd, and others. A black arrow points to the intersection of Pico Blvd and Santa Monica Blvd, labeled "Project Location".



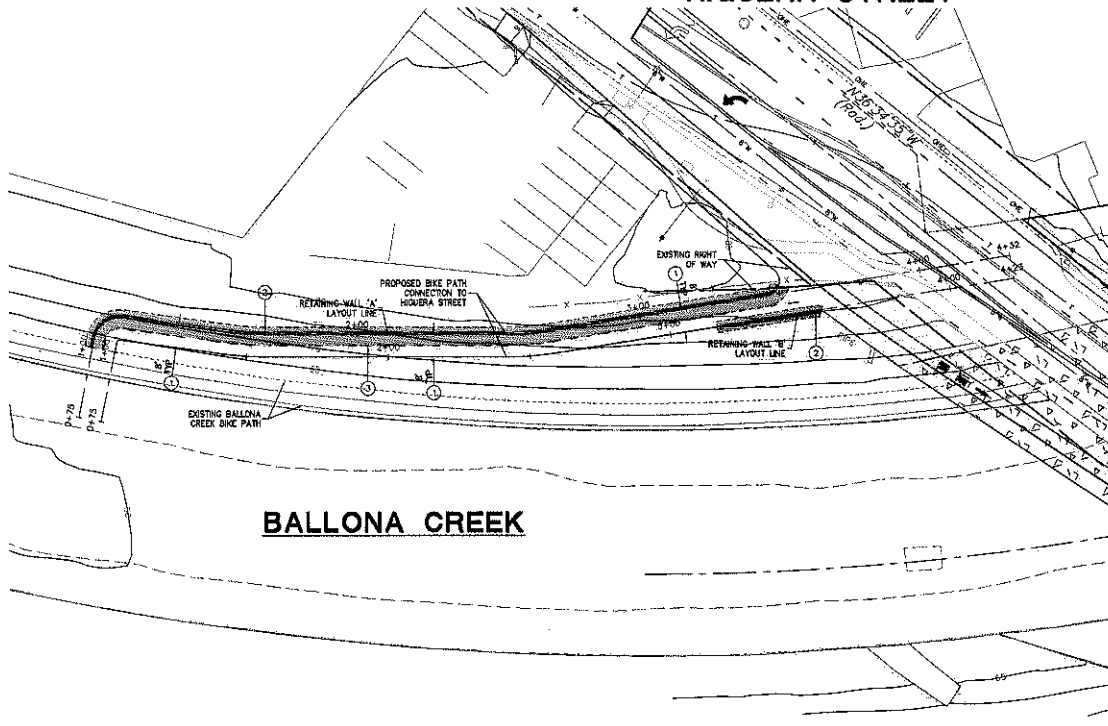


## ATTACHMENT 2: PICTURES OF SITE





## HIGUERA STREET



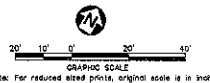
## BALLONA CREEK

### CONSTRUCTION NOTES:

1. CONSTRUCT 4" ASPHALT CONCRETE PAVEMENT OVER COMPACTED NATIVE.
2. CONSTRUCT TYPE 1A RETAINING WALL PER CALTRANS STANDARD PLAN BS-3.
3. INSTALL 4" WHITE STRIPE PER CALTRANS STANDARD PLAN A20A, DETAIL 1.

### HATCH / LINE LEGEND

	RETAINING WALL FOOTING		CONCRETE
	PROPOSED WIDENING FOR NEW BRIDGE SECTION		EXISTING COMMUNICATION
	EXISTING WATER		



PLANS PREPARED BY:  
**PSOMAS**  
3 Hutton Centre Drive, Suite 200  
San Jose, CA 95128  
(415) 751-7373 Fax (415) 945-8883  
Oct 11, 2011  
KENNETH A. BERKMAN, P.E., RCE 53940



HIGUERA BRIDGE REHABILITATION PROJECT  
CULVER CITY PUBLIC WORKS DEPARTMENT  
HIGUERA STREET  
OVER BALLONA CREEK  
LAYOUT PLAN -  
BIKE RAMP AND RETAINING WALLS  
BR-240B JOB DWG SHEET OF

## ATTACHMENT 4: EXCERPT FROM ACCESS AND LINKAGES STUDY

### Scope D1: Jefferson Boulevard Streetscape Improvements

*Jefferson Boulevard in this area has a commercial industrial character, a wide roadway that encourages high speeds for motorists and is unfriendly to cyclists and pedestrians who may wish to enter the park from Jefferson Boulevard. Creating a more parklike character along the street through landscaping and signage will help announce this area as the entrance to the Scenic Overlook Site, as well as provide safe passage for park-goers arriving by bicycle or on foot.*

#### D1.1 Access to / from Ballona Creek Bike Trail

The 1/2-mile-long Class I Ballona Creek Bike Trail runs along the north side of Ballona Creek from its start at National Boulevard and Syd Kronenthal Park, through Culver City, past the Ballona Wetlands, and out to Santa Monica Bay. Providing improved street-level access and signage in this area will give cyclists and runners the opportunity to access the trails throughout the larger Baldwin Hills Park Lands, thus connecting Santa Monica Bay to the Baldwin Hills, to the Stocker Street corridor, and from there to points east.

The existing street-level access point from the creek trail at Duquesne Avenue should be signed to indicate the new park entrance and bike trails. An additional access point at the Higuera Street overpass would provide the shortest route from the creek trail to the proposed Welcome Center at 6000 W. Jefferson (outlined in Scope D2). A revised slope from the trail up to the street with a planted area along it would be a small but significant amelioration to the path. The fence line boundary along the creek may need to be moved to accommodate the new path. An entrance gate will complete the new access point.

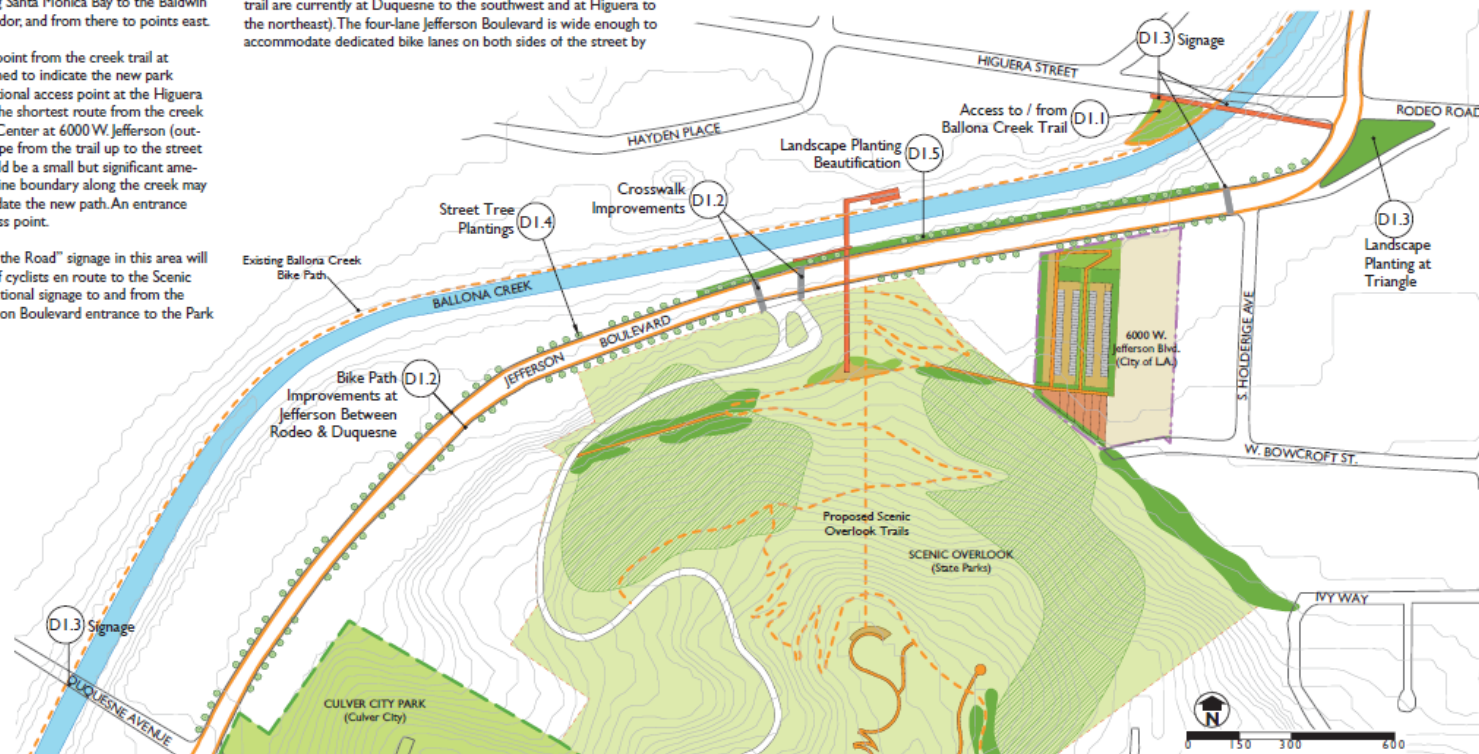
Proper "Bike Route" and "Share the Road" signage in this area will help to make motorists aware of cyclists en route to the Scenic Overlook Site. Additionally, directional signage to and from the Ballona Creek Trail to the Jefferson Boulevard entrance to the Park will orient cyclists.

#### D1.2 Bike Path Improvements between Rodeo and Duquesne and Crosswalk Improvements

A Class II Bike Lane along Jefferson Boulevard between Higuera Street and Duquesne Avenue will make the Scenic Overlook Site and proposed Welcome Center safely accessible to cyclists who may be coming from the Ballona Creek Bike Trail or from other locations in the area. (Street level access points from the creek trail are currently at Duquesne to the southwest and at Higuera to the northeast). The four-lane Jefferson Boulevard is wide enough to accommodate dedicated bike lanes on both sides of the street by

removing the painted median and realigning the traffic lanes. This new bike trail could potentially link up with the planned Class I Bike Path along Exposition Boulevard.

Hikers who may be parking along Jefferson Boulevard to access the lower trails of the Scenic Overlook Site currently are faced with a hazardous road condition. The creation of crosswalks at Hettler





1 RESOLUTION NO. 2012-R017

2 A RESOLUTION OF THE CITY COUNCIL OF THE CITY OF  
3 CULVER CITY, CALIFORNIA, APPROVING AN APPLICATION  
4 FOR GRANT FUNDS FROM THE BALDWIN HILLS  
5 CONSERVANCY FOR PROPOSITION 84 FUNDING FOR  
6 DESIGN OF A RAMP AT THE HIGUERA BRIDGE TO  
7 IMPROVE PEDESTRIAN AND BICYCLE ACCESS TO  
8 BALLONA CREEK

9 WHEREAS, the Safe Drinking Water, Water Quality and Supply, Flood  
10 Control, River and Coastal Protection Bond Act of 2006 (Proposition 84), was adopted  
11 by California voters in the general election on November 7, 2006, which among other  
12 uses, provides funds to public agencies and nonprofit organizations in the State for the  
13 purpose of preventing contamination and degradation of coastal waters and  
14 watersheds, protecting and restoring the natural habitat values of coastal waters and  
15 lands, promoting access to and enjoyment of the coastal resources of the state; and

16 WHEREAS, the Baldwin Hills Conservancy ("BHC") has set forth the  
17 necessary procedures governing application for grant funds under Proposition 84; and

18 WHEREAS, the BHC's procedures require the City of Culver City to  
19 certify, by resolution, the approval of the application before submission of the  
20 application(s) to the BHC; and

21 WHEREAS, the application contains assurances with which the City of  
22 Culver City must comply; and

23 WHEREAS, if the application is approved by the BHC, the City of Culver  
24 City will enter into an Agreement with the BHC to provide funds for the design of a ramp  
25 at the Higuera Bridge to the Ballona Creek Bike Path (the "Project").

26 NOW, THEREFORE, the City Council of the City of Culver City DOES  
27 HEREBY RESOLVE:


- 28 1. The filing of an application with the Baldwin Hills Conservancy for

1 Proposition 84 Funds for the Project is hereby approved; and

2 2. The City of Culver City hereby certifies that it understands the  
3 assurances and certification in the application form; and

4 3. The City Council hereby appoints the City Manager, or his  
5 designee, to conduct all negotiations, and to execute and submit all documents  
6 including, but not limited to, applications, agreements, amendments and  
7 payment requests, which may be necessary for the completion of the Project.  
8

9 APPROVED and ADOPTED this 13th day of February 2012.

10  
11   
12 MICHEÁL O'LEARY, Mayor  
13 City of Culver City, California

14 ATTEST:

15  
16   
17 MARTIN R. COLE, City Clerk

14 APPROVED AS TO FORM:

15  
16   
17 CAROL A. SCHWAB, City Attorney  
18 for


18 A12-00147

STATE OF CALIFORNIA )  
COUNTY OF LOS ANGELES ) SS  
CITY OF CULVER CITY )

I, Ela Valladares, Deputy City Clerk of the City of Culver City, California,  
do hereby certify that the foregoing Resolution No. 2012-R017 as duly and  
regularly adopted, passed, and approved by the City Council of the City of  
Culver City, California, at a regular meeting of said City Council held at the  
regular meeting place thereof, on the 13<sup>th</sup> day of February 2012, by the  
following Councilmember vote:

AYES:	Armenta, Cooper, Weissman, O’Leary
NOES:	None
ABSTAIN:	None
ABSENT:	None

Dated this 14<sup>th</sup> day of February, 2012.

  
\_\_\_\_\_  
Ela Valladares  
Deputy City Clerk and Ex-Officio Clerk of the City Council  
City of Culver City, State of California



P.O. Box 843, Culver City CA 90232

February 16, 2012

David McNeill, Executive Officer  
Baldwin Hills Conservancy  
5120 Goldleaf Circle, Suite 290  
Los Angeles, CA 90056

Subject: Support Letter for the City of Culver City's Grant Application for  
the Design of a Ramp from the Higuera Bridge to the Ballona Creek Bike Path

**Board of Directors**

Jim Lamm, President  
Gerald Sallus, Vice President  
David Valdez Jr., Secretary  
Rich Hibbs, Treasurer  
Michele Bigelow  
Lucy Blake-Elahi  
Sandrine Cassidy Schmitt  
Bobbi Gold  
Cathi Lamm  
Scott Malsin  
Irene Reingold  
Amy Rosenstein  
Mim Shapiro

**Advisory Council**

Steven Coker  
Lori Escalera  
Bob Hadley  
Pat Hadley  
Scott Malsin  
Dino Parks  
Marina Tidwell

Dear Mr. McNeill:

On behalf of Ballona Creek Renaissance (BCR), I am writing to express our strong support for the City of Culver City's grant application for the design of a ramp from the Higuera Avenue Bridge to the Ballona Creek Bike Path through the Baldwin Hills Conservancy's (BHC) Proposition 84 Grant Program.

As you know, the Ballona Creek Bike Path is a unique resource for the region. It provides a roughly 7-mile long separated path linking urban Los Angeles and the nearby Baldwin Hills parklands to the beach bike path and ocean. Currently, there are a limited number of access points to the bike path.

With benefits to recreational users, bicycle commuters, public safety, and the environment, the design and eventual construction of this additional access point would provide much-needed connectivity with nearby employment and recreation destinations, such as the Hayden Tract and the Baldwin Hills Scenic Overlook. It also would provide yet another important step in achieving the complementary visions of "Park to Playa" and the Ballona Creek Greenway Plan.

In summary, BCR enthusiastically supports Culver City's grant application. Please feel free to contact me if you have any questions. Thank you for your consideration.

Sincerely,

Jim Lamm  
President

**Ballona Creek Renaissance (BCR)...Connecting Creek and Community**  
A Culver City-based 501(c)(3) nonprofit organization, Federal Tax ID No. 95-4764614  
310-839-6896, [www.ballonacreek.org](http://www.ballonacreek.org)

11027 Westwood Blvd.  
Culver City, CA 90230



(310) 237-3447 phone  
SierraWestLA@gmail.com  
<http://sierrawest.us>

February 9, 2012

**David McNeill, Executive Officer**  
Baldwin Hills Conservancy  
5120 Goldleaf Circle, Suite 290  
Los Angeles, CA 90056

**Subject:** Support Letter for the City of Culver City's Grant Application for the Design of a Ramp from the Higuera Bridge to the Ballona Creek Bike Path

Dear Mr. McNeill:

The West Los Angeles Group of the Sierra Club strongly supports the City of Culver City's grant application for the design of a ramp from the Higuera Bridge to the Ballona Creek Bike Path through the Baldwin Hills Conservancy's (BHC) Proposition 84 Grant Program.

The Ballona Creek Bike Path is a unique resource for the region. It provides a roughly 7-mile long separated path linking urban Los Angeles and the nearby Baldwin Hills Parklands to the Beach Bike Path and Ocean. Currently, there are a limited number of access points to the Bike Path. The design and eventual construction of an additional access point at the Higuera Bridge would represent a significant benefit to the community and region by improving connectivity to the Ballona Creek Bike Path from nearby destinations such as the Hayden Tract and the Baldwin Hills Scenic Overlook.

The Sierra Club's Beyond Oil Campaign is working to support infrastructure improvements such as the Higuera Bridge ramp to the Ballona Creek Bike Path because they encourage walking and biking as healthy alternatives to petroleum-based modes of traveling to recreational areas such as the Baldwin Hills.

We enthusiastically support Culver City's grant application. Please feel free to contact me if you have any questions. Thank you for your consideration.

Sincerely,

A handwritten signature in black ink, appearing to read "David A. Haake".

David A. Haake, M.D.  
Chair, West Los Angeles Group of the Sierra Club



ccbike.org

8800 venice boulevard  
suite 301  
los angeles ca 90034  
<T> 310:204:4346  
<F> 310:204:4304

February 12, 2012

David McNeill, Executive Officer  
Baldwin Hills Conservancy  
5120 Goldleaf Circle, Suite 290  
Los Angeles, CA 90056

Subject: Support Letter for the City of Culver City's Grant Application for the Design of a Ramp from the Higuera Bridge to the Ballona Creek Bike Path

Dear Mr. McNeill:

I am writing to express my strong support for the City of Culver City's grant application for the design of a ramp from the Higuera Bridge to the Ballona Creek Bike Path through the Baldwin Hills Conservancy's (BHC) Proposition 84 Grant Program.

The Ballona Creek Bike Path is a unique resource for the region. It provides a roughly 7-mile long separated path linking urban Los Angeles and the nearby Baldwin Hills Parklands to the Beach Bike Path and Ocean. Currently, there are a limited number of access points to the Bike Path. The path is used by hundreds of riders each week as part of their daily commute connecting Playa Vista, Santa Monica, Culver City and Los Angeles. An additional access point at the Higuera Bridge would represent a significant benefit to the community and region by improving connectivity to the Ballona Creek Bike Path from nearby destinations such as the Hayden Tract and the Baldwin Hills Scenic Overlook.

I enthusiastically support Culver City's grant application. Please feel free to contact me if you have any questions. Thank you for your consideration.

Sincerely,

A handwritten signature in black ink, appearing to read 'Jim Shanman', is written over a light blue horizontal line.

Jim Shanman  
Culver City Bicycle Coalition



DEPARTMENT OF PARKS AND RECREATION

Ruth G. Coleman, Director

Los Angeles Sector  
700 North Alameda Street  
Los Angeles, CA 90012

February 16, 2012

David McNeill, Executive Officer  
Baldwin Hills Conservancy  
5120 Goldleaf Circle, Suite 290  
Los Angeles, CA 90056

Dear Mr. McNeill,

I am writing to express my strong support for the City of Culver City's grant application for the design of a ramp from the Higuera Bridge to the Ballona Creek Bike Path through the Baldwin Hills Conservancy's (BHC) Proposition 84 Grant Program. The Ballona Creek Bike Path is a unique resource for the region. It provides a roughly 7-mile long separated path linking urban Los Angeles and the nearby Baldwin Hills Parklands to the Beach Bike Path and Ocean. Currently, there are a limited number of access points to the Bike Path. The design and eventual construction of an additional access point at the Higuera Bridge would represent a significant benefit to the community and region by improving connectivity to the Ballona Creek Bike Path from nearby destinations such as the Hayden Tract and the Baldwin Hills Scenic Overlook. I enthusiastically support Culver City's grant application. Please feel free to contact me if you have any questions. Thank you for your consideration.

Sincerely,

Sean Woods  
Superintendent, Los Angeles Sector  
California State Parks  
213-620-6152



**JONATHAN E. FIELDING, M.D., M.P.H.**  
Director and Health Officer

**JONATHAN E. FREEDMAN**  
Chief Deputy Director

**Policies for Livable Active Communities and Environments (PLACE) Program**

Jean Armbruster, MA, Director  
695 S. Vermont Ave, 14<sup>th</sup> floor  
Los Angeles, California 90005  
TEL (213) 351-1907 • FAX (213) 637-4879



**BOARD OF SUPERVISORS**

**Gloria Molina**  
First District

**Mark Ridley-Thomas**  
Second District

**Zev Yaroslavsky**  
Third District

**Don Knabe**  
Fourth District

**Michael D. Antonovich**  
Fifth District

February 17, 2012

David McNeill, Executive Officer  
Baldwin Hills Conservancy  
5120 Goldleaf Circle, Suite 290  
Los Angeles, CA 90056

Dear Mr. McNeill:

I strongly recommend the City of Culver City's grant application for the design of a ramp from the Higuera Bridge to the Ballona Creek Bike Path through the Baldwin Hills Conservancy's Proposition 84 Grant Program.

Los Angeles County Public Health Department's PLACE Program (Policies for Livable Active Communities and Environments) is dedicated to fostering policy and environmental change that supports the development of healthy, active communities for all Los Angeles County residents. We made a three-year grant to the City of Culver City (2008-2011) to develop their first Bicycle and Pedestrian Master Plan. The City performed very well as a grantee; the Bicycle and Pedestrian Master Plan was adopted by Culver City's City Council in November of 2010 and the City is currently working hard to implement the plan. However, funding is necessary to build out the proposed improvements in the plan.

The Ballona Creek Bike Path is a safe off-street bikeway that is the backbone of the city's fledgling bikeway system. But it also has regional significance due to its connections to Los Angeles and the beach bike path. However, there are a limited number of access points to the Ballona Creek Bike Path which can impede its use. Providing an additional entry point at the Higuera Bridge would enable more people to safely access the bike path, and also create safe connections to popular destinations throughout the City including the Baldwin Hills Scenic Overlook.

I strongly support Culver City's grant application. Please feel free to contact me if you have any questions.

Sincerely,

A handwritten signature in black ink, appearing to read "Jean Armbruster /ja".

Jean Armbruster  
Director, Policies for Livable, Active Communities and Environments (PLACE)





Los Angeles County Bicycle Coalition  
634 S. Spring St. Suite 821  
Los Angeles, CA 90014  
Phone 213.629.2142  
Facsimile 213.629.2259  
www.la-bike.org

February 17, 2012

McNeill, Executive Officer  
Baldwin Hills Conservancy  
5120 Goldleaf Circle, Suite 290  
Los Angeles, CA 90056

**Subject: Support Letter for the City of Culver City's Grant Application for the Design of a Ramp from the Higuera Bridge to the Ballona Creek Bike Path**

Dear Mr. McNeill:

I am writing on behalf of the Los Angeles County Bicycle Coalition (LACBC) to express our strong support for the City of Culver City's grant application for the design of a bicycle and pedestrian ramp from the Higuera Bridge to the Ballona Creek Bike Path through the Baldwin Hills Conservancy's (BHC) Proposition 84 Grant Program.

The Ballona Creek Bike Path is a unique resource for the region. It provides a roughly 7-mile long separated path linking urban Los Angeles and the nearby Baldwin Hills Parklands to the Beach Bike Path and Ocean. Currently, there are a limited number of access points to the Bike Path. The design and eventual construction of an additional access point at the Higuera Bridge would represent a significant benefit to the community and region by improving connectivity to the Ballona Creek Bike Path from nearby destinations such as the Hayden Tract and the Baldwin Hills Scenic Overlook.

Furthermore the City of Culver City plans to install bike lanes on Jefferson Boulevard from approximately Higuera Street to Duquesne Avenue and to install bike lanes on the Higuera Bridge to connect the Baldwin Hills, the Ballona Creek Bike Path and the adjacent neighborhoods. We feel funding for the design on a ramp from Higuera Bridge to the Ballona Creek Bike Path is necessary to ensure the community has more opportunities to connect, via active transportation, to the path and the Baldwin Hills.

LACBC enthusiastically supports Culver City's grant application. Please feel free to contact me if you have any questions. Thank you for your consideration.

Sincerely,

Alexis Lantz  
Planning & Policy Director  
Los Angeles County Bicycle Coalition

## BALDWIN HILLS CONSERVANCY

5120 West Goldleaf Circle, Suite 290

Los Angeles, CA 90056

Ph: (323) 290-5270

Fx: (323) 290-5278

www.bhc.ca.gov

---

### Memorandum

**To: Governing Board**

**Fr: David McNeill**

**Date: February 24, 2012**

**Re: Item 5:** Presentation on the supplemental soil investigation results for the Eastern Ridge Expansion Project site

**Recommendation:** No action required.

**Background:** Under the terms of interagency agreement #BHC07007, the Department of Toxic Substances Control (DTSC) is to provide assessment, investigation and possible remediation plan for land within the seven-acre Eastern Ridge project site to meet technical standards as well as applicable health and safety requirements under federal, state and local law. The DTSC's services stemmed from a BHC funded Preliminary Endangerment Assessment (PEA) conducted for the site in 2006. The assessment results indicated oil-contaminated fill existed on portions of the site planned for development. The BHC and L.A. County CEO's office worked to insure all grading and construction plans for the Eastern Ridge included a monitoring component, as well as a soil management plan that would be used for current or future sites with similar soil characteristics.

DTSC contracted with an independent firm (URS) to conduct latest investigations which included a wide range of soil sampling with extensive lab tests and analysis summarized in the attached Technical Memo. The memo concludes the soil in the area does not pose an unacceptable risk to human health based on the future land use, which consists of a proposed trail route along the site. The analysis and recommendations will be used to inform Los Angeles County Public Works Department as they develop a final scope of work for the construction bid process which is scheduled to be advertised this spring.

Date: February 9, 2011

To: Ken Chiang, Project Manager  
Brownfields & Environmental Restoration Program  
Department of Toxic Substance Control

From: Alexis Bahou, PE  
Sue Korm  
Brian Jacobs, PG, CHG

Subject: ***Results of Supplemental Site Investigation  
Kenneth Hahn Eastern Ridgeline Site  
4100 South La Cienega Boulevard  
Los Angeles, California***

## 1.0 INTRODUCTION

This Technical Memorandum presents the results and findings of a Supplemental Site Investigation (SSI) conducted at the Kenneth Hahn Eastern Ridgeline (“the Site”) within the approximately 380-acre Kenneth Hahn State Recreation Area (Park) located at 4100 South La Cienega Boulevard in the City of Los Angeles, California. The project Site is located northwest of the intersection of Stocker Street and La Brea Avenue. The Site location is shown on Figures 1 and 2.

The Los Angeles County Department of Public Works (DPW) is in the process of constructing a proposed trail line along the Site. In general, the proposed construction and grading operations will be conducted within the top soil layer or upper two (2) feet along the Eastern Ridgeline. This SSI investigation was conducted to assess the soil conditions along the proposed 4,000-foot trail lane prior to construction activities. This information will be used to evaluate chemical impacts and the need for a soils management plan during the proposed construction and grading operations.

## 2.0 BACKGROUND INFORMATION

Oil was discovered in the Baldwin Hills in the 1920s and oil fields were subsequently developed, covering much of the Park. Oil fields dried up in 1970s. Since its opening in 1983, the Park has continued to expand slightly by acquiring adjacent closed oil fields. The Site is spottily covered with fill material ranging from two (2) to 17.5 feet below ground surface (bgs). The Department of Toxic Substances Control (DTSC) completed a Preliminary Endangerment Assessment (PEA) of the middle section of the ridgeline in July 2005. During the PEA, elevated arsenic was detected in two samples, 42 and 30 milligrams per kilogram (mg/kg); elevated diesel (up to 23,000 mg/kg) and oil (up to 29,000 mg/kg) were detected in several samples; and elevated methane gas of 8.6 percent (%) was detected in SG2 at a depth of 15 feet bgs. The elevated samples were all from the fill material zones.

---

### 3.0 OBJECTIVES

The objective of this investigation was to assess the existing soil conditions along the proposed trail line, compare the results to the Preliminary Screening Levels (PSLs) established by the DTSC, briefly discuss potential risks, identify compounds of concern and areas of concern, and present conclusions and recommendations, including a soil management plan for the proposed construction and grading operations.

### 4.0 SOIL SAMPLING ACTIVITIES

Twenty-one (21) soil borings were advanced at the Site to depths not exceeding three and a half (3.5) feet bgs. The boring locations are shown on Figure 2. Fifteen (15) of the boring locations (R-1 through R-15) were spaced approximately 100 to 200 feet apart along the Upper Ridge portion. Three (3) of the boring locations (S-1 through S-3) were sampled from the soil stock pile located on the Middle Ridge portion, and three borings (L-1 through L-3) were sampled from the Lower Ridge portion.

The following sections describe the pre-field activities, investigative methods and procedures, and the analytical program.

#### ***Pre-Field Activities***

In accordance with federal and State OSHA regulations (29 CFR 1910.120 and 8CCR 5192), a site-specific Health and Safety Plan (HSP) was prepared to cover the field investigation activities. The HSP identified and described potentially hazardous conditions and substances that may have been encountered during field activities, provided job safety analyses for the specified tasks; specified protective equipment for onsite activities; specified personnel decontamination procedures; and outlined measures to be implemented in the event of emergencies.

Prior to drilling at the Site, Underground Service Alert (USA) was contacted to locate and mark all subsurface utilities and obstructions in the vicinity of the proposed investigation area.

#### ***Soil Sampling Activities***

On December 9, 2011, URS and DTSC staff supervised the advancement of 15 soil borings (R-1 through R-15, S-1 through S-3, and L-1 through L-3) to depths not exceeding three and a half (3.5) feet bgs. The borings were advanced with the use of a hand auger provided by Strongarm Environmental Inc., of Norwalk, California. The field sampling equipment consisted of a 3.25-inch diameter earth auger attached to a 4-foot long T-bar. To collect soil samples, the hand auger was turned by hand to advance the auger to the appropriate sample depth. The auger was then removed and soil was collected and stored in four (4) ounce laboratory supplied glass jars.

During soil sampling activities, a photo-ionization detector (PID) and a portable x-ray fluorescence (XRF) metal analyzer were used as field screening tools to detect the presence of total volatile organics and heavy metals, respectively, in the soil samples. The PID was also used as to monitor breathing zone concentrations in the work area during soil sampling activities.

During soil sampling activities, total organic concentrations were below action levels in the workers breathing zone.

All soil sampling equipment was decontaminated prior to first use, in between uses, and prior to leaving the Site. On-site decontamination methods included brushing the equipment with a stiff wire brush as approved by DTSC previously. Following drilling and soil sample retrieval, the soil borings were backfilled with native soil.

In general, soil samples were collected from one (1) and two (2) feet bgs from the Upper Ridge, one (1) foot bgs from the Lower Ridge and two (2) or three and a half (3.5) feet bgs from the soil stock pile located on the Middle Ridge. During soil sampling activities, PID and XRF readings and visual observations were also used as a guide to determine if soil samples should be tested for additional analyses. Following sample collection, the soil samples were labeled and stored on-site in an ice filled cooler. Soil samples were then transported off-site to CHEMTEK Environmental Laboratories Inc., a California state-certified laboratory, for chemical analysis under chain-of-custody (COC) documentation. CHEMTEK Environmental Laboratories Inc. is located in Santa Fe Springs, California. COC records were used to document sample collection and shipment to the laboratory for analysis.

### ***Laboratory Analysis***

In total, 37 soil samples (33 primary samples and four (4) field duplicates) were collected from the Upper and Lower Ridge and analyzed for TPH as diesel and TPH as oil by EPA Method 8015M, arsenic by EPA method 7060, and lead using Method EPA 7420. Nine (9) soil samples (R-9-2, R-10-2, R-11-1, R-11-2, R-12-2, R-13-1, R-14-2, R-15-2, and L-2-1) were analyzed for Title 22 Metals by EPA 7000-Series Method. Five (5) soil samples (R-9-2, R-10-2, R-11-1, R-11-2, R-12-2) were analyzed for semi-volatile organic compounds (SVOC) including polycyclic aromatic hydrocarbons (PAHs) by EPA Method 8270C.

Soil samples collected from soil stockpiles located on the Middle Ridge (S-1, S-2, and S-3) were analyzed for TPH as diesel and TPH as oil by EPA Method 8015M, Title 22 Metals by EPA Method 7000, and SVOC including PAHs by EPA Method 8270C.

## **5.0 SOIL SAMPLING INVESTIGATION RESULTS**

This section presents the field and laboratory results of the soil sampling investigation activities.

### ***Soil Lithology***

The representative soil lithology over the investigation area consisted of clay with silt, sandy silt, silty sand and well to poorly graded sand from the ground surface to approximately three and a half (3.5) feet bgs. Field boring logs for soil borings (R-1 through R-15 and L-1 through L-3) are included as Appendix A. A map presenting the locations of stockpile samples S-1 through S-3 is also provided in Appendix A.

### ***Soil Analytical Results***

The laboratory soil analytical results are summarized in Table 1 and Tables B-1, B-2, and B-3 are provided Appendix B. The complete laboratory analytical report and chain-of-custody documentation is presented as Appendix C.

Detectable concentrations of TPH as diesel were identified in eight (8) soil samples. The detected concentrations of TPH as diesel ranged from 80 mg/kg (R-13-2') to 27,000 mg/kg (R-9-2').

TPH as oil was detected in 24 soil samples at concentrations ranging from 11 mg/kg (R-8-1') to 29,000 mg/kg (R-10-12').

Two (2) SVOC compounds, 2-methylnaphthalene and naphthalene, were detected in two (2) soil samples (R-9-2 and R-11-1). Concentrations of 2-methylnaphthalene ranged from 1,720 micrograms per kilogram ( µg/kg) to 5,200 µg/kg and naphthalene ranged from 700 µg/kg to 1,900 µg/kg.

Three (3) PAH compounds, acenaphthene, chrysene and fluorene, were detected in two (2) soil samples (R-9-2 and R-11-1). Acenaphthene was detected at 990 µg/kg, chrysene was detected at 5,100 µg/kg, and fluorene ranged from 570 µg/kg to 2,900 µg/kg.

Metals concentrations were detected in 18 of 39 soil samples collected during soil sampling investigation. A summary of detections is provided below.

- Arsenic was detected in four (4) soil samples at concentrations ranging from 2.1 (R-11-2') to 7.9 mg/kg (R-9-2');
- Barium was detected in 12 soil samples at concentrations ranging from 14.9 (L-2-1') to 165 mg/kg (R-11-2');
- Chromium was detected in 12 soil samples at concentrations ranging from 1.4 (R-14-2') to 30.8 mg/kg (R-9-2');
- Cobalt was detected in 10 soil samples at concentrations ranging from 0.7 (R-15-2') to 1.6 mg/kg (R-9-2');
- Copper was detected in 11 soil samples at concentrations ranging from 0.81 (L-2-1') to 7.7 mg/kg (R-9-2');
- Lead was detected in 17 soil samples at concentrations ranging from 0.62 (R-5-1') to 6.3 mg/kg (R-9-2');
- Mercury was detected in 12 soil samples at concentrations ranging from 0.06 (L-2-1') to 0.35 mg/kg (R-12-2');
- Nickel was detected in 11 soil samples at concentrations ranging from 0.62 (L-2-1') to 6.1 mg/kg (R-9-2');

- Zinc was detected in 11 soil samples at concentrations ranging from 3.4 (L-2-1') to 12.7 mg/kg (R-15-2').

## 6.0 SOIL MANAGEMENT PLAN

Based on the available data collected in the 2005 PEA and the current SSI, there were no unacceptable risks or hazards associated with direct contact to compounds of potential concerns (COPCs) detected in soil, including metals, SVOCs and PAHs. Metals appear to be within background compared to other sites in southern California. Arsenic was well within the range of concentrations observed in southern California, with an exception of two (2) elevated but isolated detections in deep fill material zones (approximately 15 feet bgs) in the 2005 PEA. Lead was well below the DTSC screening criteria. The maximum reported B(a)P-TE concentration (0.05 mg/kg) was well below the southern California background screening level of 0.9 mg/kg. Based on the range of detection limits for PAHs, 0.2 to 0.7 mg/kg, PAHs are not a chemical of concern at the Site in the upper two (2) feet of soil.

Elevated concentrations of TPH, however, were detected at 1- and 2-feet bgs in soil borings R-9, R-10, R-11 and R-12. These detections confirmed the previous elevated TPH detections in the 2005 PEA and are well above the 10,000 mg/kg TPH screening criteria typically used for southern California sites for aesthetic or odor concerns (not for health or environmental concerns). The TPH is generally weathered, tightly bound to soil and unlikely to present a significant risk to human health. In addition, elevated concentrations of methane gas of 8.6% was detected in SG2 at a depth of 15 feet bgs during the 2005 PEA, exceeding the lower explosive limit (LEL) for methane.

As a precaution, the following soil management practices should be observed during the proposed construction and grading operations:

- Field oversight of grading operations, including spot checks of soils with PID for VOCs and XRF for metals, is recommended with DTSC concurrence.
- Direct contact of TPH contaminated soils, exceeding 10,000 mg/kg as identified during the 2005 PEA and the current SSI, by human bodies should be avoided (due to aesthetic or odor concerns). All construction and maintenance workers should be trained to avoid direct contact with TPH-contaminated soils (e.g., wearing plastic or rubber gloves).
- Any onsite TPH contaminated soils exposed or excavated may remain onsite; however, at least two (2) feet of clean fill material (imported or from onsite sources) should be placed over the TPH-contaminated (10,000 areas where potential contact may occur. With a cap of 2-feet of clean fill, no direct contact or potential health risks would be anticipated for the Site's intended use, namely recreational use of trails.
- Proper disposal requirements imposed by the disposal facility should be followed if offsite disposal of TPH contaminated or stockpiled soils is planned.

- While no unacceptable risks or hazards were identified for the intended land use, namely recreational use of trails, any other use of the Site would require additional site characterization and a human health risk evaluation.
- Enclosed structures (e.g., rest rooms) should not be constructed onsite due to a potential for methane vapor intrusion and accumulation, unless otherwise specially approved by DTSC. Any future structures would require additional characterization (e.g., soil gas survey) and evaluation of the potential for vapor intrusion, including the potential for accumulation of explosive levels of methane.

## 7.0 CONCLUSIONS AND RECOMMENDATIONS

Samples with elevated TPH as oil and TPH as diesel concentrations above the PSLs were detected in soil borings R-9, R-10, R-11, R-12, and R-15 located in the central portion of the Upper Ridge. TPH as diesel and TPH as oil concentrations in these samples exceeded the PSLs of 10,000 mg/kg. However, these are heavy end carbon chains and it is likely that the TPH in these samples is weathered and tightly bound to the soil. Further testing of these samples did not indicate elevated levels of PAHs. Detected concentrations of acenaphthylene, chrysene, fluorene, 2-methylnaphthalene, naphthalene, phenanthrene were below the EPA Region IX Regional Screening Levels 27,000 µg/kg, 15,000 µg/kg, 2,300,000 µg/kg, 310,000 µg/kg, 3,600 µg/kg, and 27,000 µg/kg, respectively. The calculated benzo(a)pyrene (B(a)P) equivalent for soil samples R-9-2, R-10-1, R-11-1, R-11-2, R-12-2, S-1-3.5, S-2-2, and S-3-2 were all below the PSL of 0.9 mg/kg (or 900 µg/kg). Detected metals concentrations were all below the PSLs and appear to be within background levels for southern California. Therefore, the soil associated with this area does not pose an unacceptable risk to human health based on the future land use which consists of a proposed trail line along the Site. Any land use other than recreational, would require additional site characterization activities and a re-evaluation of potential health risks for that land use scenario.

Previous PEA sampling at the Site indicated elevated methane was detected at 8.6% in a sample collected from 15 feet bgs (PEA, 2005). The concentration exceeded the LEL for methane. Therefore, structures should not be constructed on-site without additional site characterization of the soil gas and a human health risk evaluation for the new use of the Site.

Soil represented by samples S-1 through S-3 collected from the soil stock pile located on the Middle Ridge portion would be classified as **non-hazardous** waste. If offsite disposal of the stockpile soil is planned, the volume of the stockpiles should be determined and the soil sampling results should be provided to a licensed waste disposal facility for profiling purposes prior to export.

## 8.0 REFERENCES

California Environmental Protection Agency Department of Toxic Substances Control (Cal/EPA DTSC), July 2005. *Preliminary Endangerment Assessment for Baldwin Hills Conservancy Eastern Ridgeline Site.*



California Environmental Protection Agency Department of Toxic Substances Control (Cal/EPA DTSC), December 5, 2011. *Supplemental Site Investigation Contract No. 11-T1029.*

**-oOo-**

If you have any questions please call the undersigned at 213.996.2200. This Technical Memorandum was prepared by:

**URS CORPORATION**



Sue Korm.  
Staff Geologist



Alexis Bahou, P.E.  
Principal Engineer



Brian Jacobs, P.G., C.H.G.  
Principal Geologist

**Attachments:**

Figure 1            Site Location Map  
Figure 2            Soil Sampling Locations

**Attachments:**

Table 1- Summary of Soil Analytical Results  
Figure 1 - Site Vicinity Map  
Figure 2 - Site Map with Boring Locations  
Figure 3 – Stockpile Sampling Locations  
Appendix A – Boring Logs  
Appendix B – Soil Analytical Results  
Appendix C – Laboratory Analytical Reports

## BALDWIN HILLS CONSERVANCY

5120 West Goldleaf Circle, Suite 290

Los Angeles, CA 90056

Ph: (323) 290-5270

Fx: (323) 290-5278

www.bhc.ca.gov

---

### Memorandum

**To: Governing Board**

**Fr: David McNeill**

**Date: February 24, 2012**

**Re: Item 6:** Presentation on BHC design development and capital improvement priorities for 2012-13

**Recommendation:** No action required.

**Background:** Staff has updated the attached Conservancy planning matrix developed to manage progress on implementation of the Baldwin Hills Park Master Plan over the next five years. The list includes both projects currently underway, and projects proposed for implementation based on their synergy with investments scheduled for completion in the next two to three years. General cost estimates were projected based on a combination of the conceptual level design scope of work hours, costs of materials and labor required to deliver the project.

All of the proposed projects are consistent with the Baldwin Hills Conservancy's Summarized Strategic Plan and can be carried out under the direction of the Conservancy and or in collaboration with local, state, federal or private partners.

Baldwin Hills Conservancy Planning Matrix  
2012

<b>Color Key</b>				<b><i>Bold Italicized = Funding Opportunity</i></b>	
Active					
Proposed					
<b>Projects (Identified in Master Plan and Linkage Study)</b>	<b>Description</b>	<b>Planning Status</b>	<b>Time</b>	<b>Est Cost</b>	<b>Project Siting</b>
Stocker Corridor Trail and Bikepath (Phase II)	Realign and upgrade pedestrian and bicycle trails, landscaping, and signage	Concepts, design scope ongoing	0 to 5	\$ <b><i>1,390,000.00</i></b>	Stocker Street
Ingold Park Connection to Stocker Trail	Gate, switchback trail, stairs, signage	Concepts, design scope ongoing	0 to 5	\$ <b><i>280,000.00</i></b>	Above Stocker Corridor Trail
Stocker Street Pedestrian Bridge	Pedestrian and bicycle connection, signage	Concepts, design scope ongoing	0 to 5	\$ <b><i>1,256,302.00</i></b>	Stocker Trail and Norman Houston Park
Five Points Access and Trails Connection	Establishment of inter-park facilities, bicycle trails and pedestrian walkways accessing KHSRA, Norman Houston Park & Stocker Trail	Concepts, design scope ongoing	0 to 5	\$ 2,250,000.00	Intersection of Stocker, Overhill and La Brea
La Brea Greenbelt Trail Connection	Landscaping, footpath	Concepts, design scope ongoing	0 to 5	\$ <b><i>1,419,434.00</i></b>	La Brea Avenue
Eastern Ridgeline Expansion	Picnic facilities, parking, restrooms, and landscaping	Construction docs due Winter 2012 project bid in Spring 2012	0 to 5	\$ 2,971,900.00	KHSRA
KHSRA Trail Rehabilitation & Improvements	Native plantings, decommissioning trails, alignment of new trails and signage	Concepts, design scope ongoing	0 to 5	\$ <b><i>760,830.00</i></b>	Central KHSRA
Parklands Habitat Restoration (Phase I)	Mapping and removal of invasive species, propagating and planting native species	GIS mapping, invasive removal and greenhouse construction ongoing	0 to 5	\$ 400,000.00	Baldwin Hills Parklands
La Cienega Boulevard Entrance	Enhancements at overpass & entryway native plant landscaping	Concepts, design scope complete	0 to 5	\$ 900,000.00	La Cienega Boulevard entrance
Habitat Restoration and Trail Creation @ Lloyd/Finley Fee	Multi-modal trails, access points, habitat restoration, signage	Concepts, design scope ongoing	0 to 5	\$ <b><i>1,331,956.00</i></b>	West of La Cienega entrance
Western Gateway	Trailhead, pavillion, office space, parking, greenhouse	Staging of planning and outreach	0 to 5	\$ <b><i>2,500,000.00</i></b>	Jefferson/Stoneview School site
Jefferson Boulevard Streetscape Improvements	Pedestrian access, bike path improvements, landscaping, crosswalk and traffic signal	Construction docs in development, initiate construction Summer 2012	0 to 5	\$ 570,000.00	Jefferson Boulevard between Higuera Street and Duquesne Avenue
Ballona Creek Outdoor Classroom	Construction of 1.3 acre interpretive park adjacent to school and creek	Construction docs due Summer 2012	0 to 5	\$ <b><i>2,200,000.00</i></b>	Milton Street

## BALDWIN HILLS CONSERVANCY

5120 West Goldleaf Circle, Suite 290

Los Angeles, CA 90056

Ph: (323) 290-5270

Fx: (323) 290-5278

[www.bhc.ca.gov](http://www.bhc.ca.gov)

---

### Memorandum

**To: Governing Board**

**Fr: Dr. Allan Boodnick, Chairman**

**Date: February 24, 2012**

**Re: Item 7: Proposed Ad Hoc Committees**

**Recommendation:** Please consider participating in one or more of the committees which will be utilized on an as needed basis.

**Background:** Pursuant to the key goals set for this year, a few proposed committees are being formed to increase member engagement, philanthropy and to promote the wide range of expertise available on the BHC board. The initial committees and their objectives are listed below:

#### Board Development Committee

- Develop strategies to assist legislative appointing offices in recruiting new representatives to fill vacancies on the board
- Strengthen meeting attendance by existing members
- Work with legislators to amend statute to include a designee for the Supervisor's appointment and extend member tenure an additional two years
- Plan team-building related events, presentations and activities for member growth

#### Fundraising Committee

- Identify sponsors for board and or park related functions
- Plan events and activities that improve amenities and resources within the parklands
- Assist park supporting non-profits with planning and capacity building

## **BALDWIN HILLS CONSERVANCY**

5120 West Goldleaf Circle, Suite 290

Los Angeles, CA 90056

Ph: (323) 290-5270

Fx: (323) 290-5278

[www.bhc.ca.gov](http://www.bhc.ca.gov)

---

### **Memorandum**

**To: Governing Board**

**Fr: David McNeill**

**Date: February 24, 2012**

**Re: Item 8: Executive Officer Report**

#### **Projects Status Report**

Please see the attached updated BHC Local Assistance / Capital Outlay Projects Status Report (Attachment #1).

#### **Fiscal Update**

Please see BHC Summary Expenditure Sheet by Fund (Attachment #2) and the BHC Prop 40 & Prop 84 Bond Cash Funds (Attachment #3). Both reports correspond with the end of month six (6) of the 2011-12 fiscal year.

**Baldwin Hills Conservancy**  
**Local Assistance / Capital Outlay Projects Status Report**  
**02/24/12**

<b>Capital Outlay Grantee/Administrator</b>	<b>Project Title</b>	<b>ContractID</b>	<b>Fund Source</b>	<b>Funds Allocated</b>	<b>Encumbrance and Liquidation Dates</b>	<b>PROJECT STATUS</b>
Baldwin Hills Regional Conservation Authority (BHRCA)	Western Gateway Acquisition	BHC07002	Prop 40	\$2,000,000	Enc. 6/30/13 (liq. 6/30/15)	<b>Title for 5950 Stoneview Drive was transferred to the BHRCA on Jan. 6, 2012; LA County Parks Staff have the keys to the property; BHC will re-allocate the previously encumbered \$2M of Prop 40 Funds.</b>
Los Angeles Neighborhood Initiative (LANI)	Enhancements at La Cienega entrance to KHSRA	BHC07003	Prop 40	\$900,000	Enc. 6/30/14 (liq. 6/30/15)	<b>Contractor hired; Pre- construction meeting held in Dec. 2011; Completion expected in the Fall of 2012.</b>
California Dept. of Toxic Substance Control (DTSC)	Environmental Monitoring	BHC07007	Prop 40	\$500,000	Enc. 6/30/14 (liq. 6/30/15)	<b>Environmental report and soil management plan expected Spring 2012; Environmental monitoring to continue when construction starts Summer 2012.</b>
Mountains Recreation and Conservation Authority (MRCA)	Milton Street Park Planning (Matching Grant)	BHC07011	Prop 40	\$75,000	Enc. 6/30/13 (liq. 6/30/15)	<b>Partner meeting held Dec. 2011; Due to Army Corps vegetaion policies, changes to the design were made and approved; Project completion scheduled June 2012.</b>

**Baldwin Hills Conservancy**  
**Local Assistance / Capital Outlay Projects Status Report**  
**02/24/12**

<b>Capital Outlay Grantee/Administrator</b>	<b>Project Title</b>	<b>ContractID</b>	<b>Fund Source</b>	<b>Funds Allocated</b>	<b>Encumbrance and Liquidation Dates</b>	<b>PROJECT STATUS</b>
Los Angeles County Chief Executive Office	Eastern Ridgeline Development at KHSRA	BHC07012	Prop 40	\$2,250,000	Enc. 6/30/14 (liq. 6/30/16)	<b>100% Construction Drawings rec'd Nov. 2011; LA County BOS to consider budget augmentation in Mar. 2012; Project to go out to bid Spring 2012.</b>
City of Los Angeles	Outdoor Improvements at Norman O. Houston Park		Prop 40	\$1,800,000,000		<b>BHC Board approved Jan. 2012; Grant Agreement documents in-progress.</b>
Los Angeles Infrastructure Academy	Baldwin Hills Parklands Habitat Restoration		Prop 84	\$400,000	Enc. 6/30/12 (liq. 6/30/14)	<b>Invasive species mapping complete; Data clean-up in- progress; 2ndnewsletter produced; Control work started at KHSRA and BHSO; 2 volunteer events held - more planned; Event calendar being compiled for the BH Parklands.</b>
City of Culver City	Park to Playa Trail - Jefferson Blvd Streetscape and Access Improvements		Prop 84	\$570,000	Enc. 6/30/12 (liq. 6/30/14)	<b>Revised Plan completed Jan. 2012; Plans sent to LA for permitting; Expected to go out to bid Spring 2012.</b>

Baldwin Hills  
2011/12 Summary Sheet by Fund

<u>FUND</u>	<u>PCA #</u>	<u>Original Appropriation</u>	<u>EXP + ENC</u>	<u>BALANCE</u>
<b><i>Support</i></b>				
2011 Budget Act Item 3835-001-0140	<b>10001</b>	\$ 348,000.00	\$ 209,870.61	\$ 138,129.39
2011 Budget Act Item 3835-001-6029	<b>10005</b>	\$ 117,000.00	\$ 41,883.65	\$ 75,116.35
2011 Budget Act Item 3835-001-6051	<b>10009</b>	\$ 103,000.00	\$ -	\$ 103,000.00
<b>Total Support Balance:</b>				<b>\$ 316,245.74</b>
<b><i>Capital Outlay</i></b>				
2009 Budget Act Item 3835-301-6051	<b>30002</b>	\$ 3,050,000.00	\$ 970,000.00	\$ 2,080,000.00
2008 Budget Act Item 3835-301-6051	<b>30001</b>	\$ 3,050,000.00	\$ -	\$ 3,050,000.00
2007 Budget Act Item 3835-301-6051	<b>30000</b>	\$ 3,050,000.00	\$ -	\$ 3,050,000.00
2005 Budget Act Item 3835-301-6029	<b>20003</b>	\$ 8,648,000.00	\$ 2,253,388.19	\$ 6,394,611.81
2004 Budget Act Item 3835-301-6029	<b>20002</b>	\$ 7,200,000.00	\$ 3,848,335.14	\$ 3,351,664.86
2003 Budget Act Item 3835-301-6029	<b>20001</b>	\$ 7,200,000.00	\$ 2,334,996.11	\$ 4,865,003.89
2002 Budget Act Item 3835-301-6029	<b>22000</b>	\$ 15,000,000.00	\$ 11,721,166.59	\$ 3,278,833.41
<b>Total Cap Outlay Balance:</b>				<b>\$ 26,070,113.97</b>



<b>2010 SPRING BAB SALE</b>		<b>CASH ALLOCATED</b>	<b>EXPENDITURES</b>	<b>BALANCE</b>
	PROP 40:	\$579,277.00	186355	\$392,922.00
	PROP 84:	\$2,137,455.25	11835	\$2,125,620.25
<b>2010 DECEMBER BAB SALE</b>				
	PROP 40:	\$603,452.18	0	\$ 603,452.18
<b>2010 DECEMBER TE SALE</b>				
	PROP 40:	\$60,547.82	0	\$ 60,547.82
<b>2010 SPRING TE SALE</b>				
	PROP 40:	\$1,415,869.68	0	\$1,415,869.68
	PROP 84:	\$2,473,145.41	0	\$2,473,145.41
<b>2009 OCTOBER TE SALE</b>				
	PROP 40:	\$1,089,020.23	100403.38	\$988,616.85
	PROP 84:	\$197,000.00	39254.99	\$157,745.01
<b>2009 MARCH SALE</b>				
	PROP 40:	\$4,159,594.83	833049.54	\$ 3,326,545.29
			<b>Total Bond Cash</b>	<b>\$ 11,544,464.49</b>

## BALDWIN HILLS CONSERVANCY

5120 West Goldleaf Circle, Suite 290

Los Angeles, CA 90056

Ph: (323) 290-5270

Fx: (323) 290-5278

www.bhc.ca.gov

---

### Memorandum

**To: Governing Board**

**Fr: Grant Review Ad Hoc Committee – Allan Kingston, Chair**

**Date: February 24, 2012**

**Re: Item 5:** Consideration of a resolution authorizing a grant of BHC Prop 84 funds to Culver City for design development of a public access ramp at the Ballona Creek Bike path and Higuera Street Bridge.

**Recommendation:** Approve resolution 12-02, authorizing a grant in an amount not to exceed \$60,000 of BHC Prop 84 funds to Culver City for design development of a public access ramp at the Ballona Creek Bike path and Higuera Street Bridge.

**Background:** Member Allan Kingston convened with staff to review the Higuera Bridge Ramp application on February 22, 2012. The application submitted by the Culver City Department of Public Works was assessed using the criteria adopted by the BHC in April 2011. Overall, the planning funds requested would further efforts to improve pedestrian and bicycle access to the creek. The location and timing of the project are compelling due to: 1) the current lack of opportunities to enter the creek bike path from the eastern reach, and 2) the long-range plans to widen the Higuera Bridge to accommodate pedestrian and bicycle traffic. The proposal compliments current efforts to facilitate a safer continuous route from the parklands to the adjacent Ballona Creek Bicycle Path and ultimately the coast.

The project application (see attachment #1) requests a 75% funding match in the amount of \$60,000 to design the access ramp.

The committee's assessment of the project description and narrative yielded the following top four goals of the Baldwin Hills Park Master Plan and the BHC's Strategic Plan: 1) emphasizes connections between existing parks, trails, and urban streams; 2) providing for public access and entryways; 3) increases active recreation opportunities for underserved communities; 4) creates or implements a comprehensive trail system.

The committee prioritized the Higuera Ramp project as a 10 on an ascending scale from one to ten. If approved, the designs and environmental studies would be initiated this summer with complete construction schematics available in September 2013.

**Higuera Bridge Ramp Design for Access to Ballona Creek  
City of Culver City**

**PROP 84 LOCAL ASSISTANCE GRANT PROJECT REQUIREMENTS**

(For use in the determination of the priority of Conservancy grants and projects authorized under Division 22.7 of the California Public Resources Code)

**STANDARD REQUIREMENTS**

**a. Located within the BHC territory**

Site map and narrative identify project is within the Conservancy territory and boundaries as described in PRC 32553 (a).

**b. Promotion of the Conservancy's statutory programs and purposes**

*PRC 32569 (a):* Conservancy may award grants to local public agencies for the purposes of this division

*PRC 32565.5 (b):* Conservancy shall give priority to related projects that create expanded opportunities that provide recreation, aesthetic improvement, and wildlife habitat in the Baldwin Hills area.

**c. Consistency with purposes of Prop 84 statute**

*PRC 75060:* Bond funds are available for projects to promote access to and enjoyment of the coastal resources of the State

**d. Consistency with the Baldwin Hills Park Master Plan**

*Pedestrian Access and Trail Connections, page 46:* "Key public access points would allow easy connections to major public trails and access into the park."

*Footpaths and Bicycle Trails, page 46:* "The Ballona Creek Trail connects to the 25-mile Beach Bike Path, presenting an opportunity to link the entire Baldwin Hills Park and surrounding areas to this regional trail network, to provide a contiguous bicycle and pedestrian trail"

**e. Greater-than-local interest**

With nearly 3 million Californians residing in a five-mile radius of the Baldwin Hills territory (according to the 2000 census data), and over 58 million trip visits to the Los Angeles area annually by Californians alone, the land resources in the Baldwin Hills represent an extraordinarily unique value to the entire state.

**f. Demonstrated expertise in the proposed program area**

The City of Culver City Public Works Department has undertaken similar projects within its jurisdiction including street medians, bridges, bicycle lanes, landscaping and ramps.

**ADDITIONAL PRIORITIES**

**g. Leverage**

The applicant is providing the required 25% match utilizing Culver City's Gas Tax revenue in the amount of \$20,000. This match would leverage Prop 84 funds within the BHC's territory and demonstrate the BHC's capacity to partner with local public agencies.

**j. Resolution of more than one issue**

This project resolves multiple issues by improving access to the Scenic Overlook and Ballona Creek; encouraging non-vehicular travel. The proposal also allows for integration into current improvements proposed for the Jefferson Blvd corridor and the \$7.6 million Higuera Street Bridge widening project.

**k. Readiness**

Culver City is prepared to initiate the project as early as September with designs being completed in one year. Adequate financial resources are currently at the department's disposal.

**l. Realization of prior BHC goal**

The project enhances the existing access at the Baldwin Hills Scenic Overlook and compliments current studies being conducted for the Park to Playa Trail. Building on the popularity of the Ballona Creek and the Scenic Overlook, the proposed improvements are a natural evolution towards the community's vision of linking park resources as recommended in the Baldwin Hills Park Master Plan.

## **BALDWIN HILLS CONSERVANCY (BHC)**

### **RESOLUTION 12-02**

**RESOLUTION AUTHORIZING A GRANT IN AN AMOUNT NOT TO EXCEED \$60,000 OF BHC PROP 84 FUNDS TO CULVER CITY FOR DESIGN DEVELOPMENT OF A PUBLIC ACCESS RAMP AT THE BALLONA CREEK BIKE PATH AND THE HIGUERA STREET BRIDGE.**

WHEREAS, under Division 22.7 of the California Public Resources Code, the Baldwin Hills Conservancy was created to acquire open space and manage public lands within the Baldwin Hills area and to provide recreation, restoration and protection of wildlife habitat within the Conservancy territory; and

WHEREAS, Public Resources Code 32569 (a) states the Conservancy may award grants to local agencies for the purposes of its division; and

WHEREAS, the City of Culver City is a local agency incorporated as a city in 1917; and

WHEREAS, pursuant to Public Resources Code 75060, funds from the Safe Drinking Water, Water Quality and Supply, Flood Control, River and Coastal Protection Bond Act of 2006 are available for projects in the Baldwin Hills and Ballona Creek Watershed to promote access to and enjoyment of the coastal resources of the State; and to prevent contamination and degradation of coastal waters and watersheds; and

WHEREAS, Culver City has submitted an application for BHC's Prop 84 local assistance grant program for design development of a public access ramp at the Ballona Creek Bike Path and Higuera Street bridge which are consistent with the funding source and grant requirements adopted by the BHC under resolution 10-06; and

WHEREAS, pursuant to Public Resources Code 32565.5 (b) the Baldwin Hills Conservancy shall give priority to related projects that create expanded opportunities that provide recreation, aesthetic improvement, and wildlife habitat in the Baldwin Hills area; and

WHEREAS, as under Public Resources Code 15303 this action is exempt from the environmental impact requirements of the California Environmental Quality Act (CEQA); now

**THEREFORE BE IT RESOLVED, THE BHC GOVERNING BOARD:**

1. AUTHORIZES A GRANT IN AN AMOUNT NOT TO EXCEED \$60,000 OF BHC PROP 84 FUNDS TO CULVER CITY FOR DESIGN DEVELOPMENT OF A PUBLIC ACCESS RAMP AT THE BALLONA CREEK BIKE PATH AND HIGUERA STREET BRIDGE.
2. ADOPTS THE COMMITTEE REPORT AND RECOMMENDATIONS DATED FEBRUARY 22, 2012 FOR THIS ITEM.

3. APPOINTS THE EXECUTIVE OFFICER, AS AGENT TO CONDUCT ALL NEGOTIATIONS, EXECUTE AND SUBMIT ALL DOCUMENTS INCLUDING, BUT NOT LIMITED TO AGREEMENTS, PAYMENT REQUESTS, AND CERTIFICATIONS WHICH MAY BE NECESSARY FOR THE COMPLETION OF THE AFOREMENTIONED PROJECT(S).

Passed and Adopted by the Board of the  
BALDWIN HILLS CONSERVANCY

on \_\_\_\_\_, 2012.

\_\_\_\_\_  
Dr. Allan Boodnick  
Chair

ATTEST: \_\_\_\_\_  
Rosana Miramontes  
Deputy Attorney General