

An aerial photograph of the Baldwin Hills area in Los Angeles. A purple line traces a trail through the hills, starting from the left and ending on the right. A green line follows a path along the coastline, starting from the top right and moving towards the center. The background shows a mix of urban development, green hills, and the ocean.

# Park to Playa Trail

Public Workshop #2

May 3, 2011

Project Funded By: Baldwin Hills Regional Conservation Authority

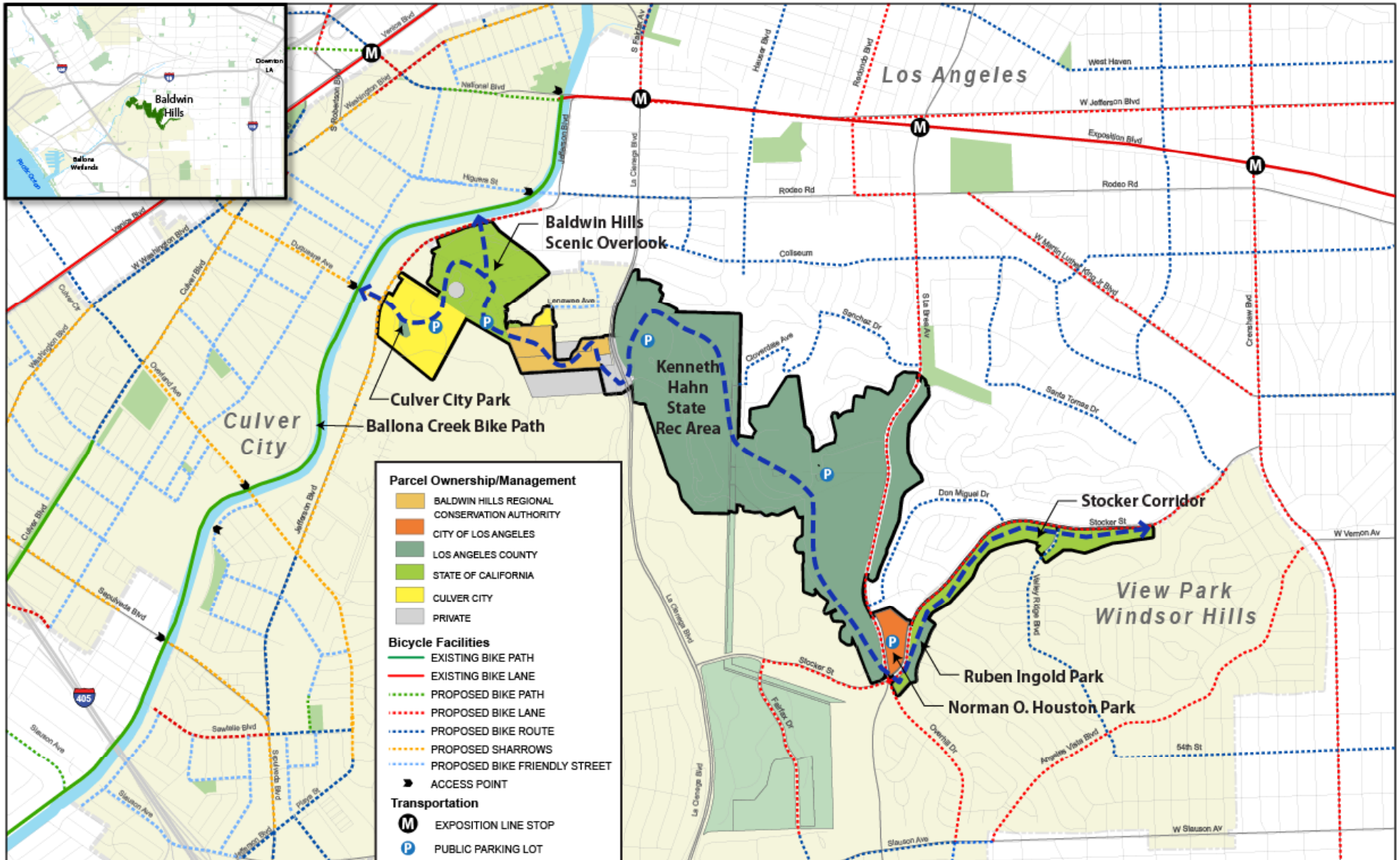
# Workshop Agenda



- Introductions
- Project Overview
- Open House – Give us Your Input on Maps and Recommendations
- Report Out to Group & Next Steps

More Info at: [www.bhc.ca.gov](http://www.bhc.ca.gov) or  
<http://smmc.ca.gov/BHRCA.asp>

# Park to Playa Trail Study Corridor



# Community Outreach

- Conducted On Site Interviews
- Public Workshop
- Web Based Survey



**Park to Playa**

**1. Park to Playa Survey**

1. Thanks for taking the time to fill out this survey. Please share with us your name, w

Name:

Where you live (general location):

Email Address:

2. Which local trails do you use?

Stocker Corridor

Ruben Ingold Park

Norman O. Houston Park

Kenneth Hahn State Rec Area - La Brea Loop

Kenneth Hahn State Rec Area - Japanese Waterfall Trail

Baldwin Hills Scenic Overlook

Culver City Park

Ballona Creek Bike Path

Ballona Wetlands

Beach Bike Path

Other (please specify)

3. How often do you use them?

Daily

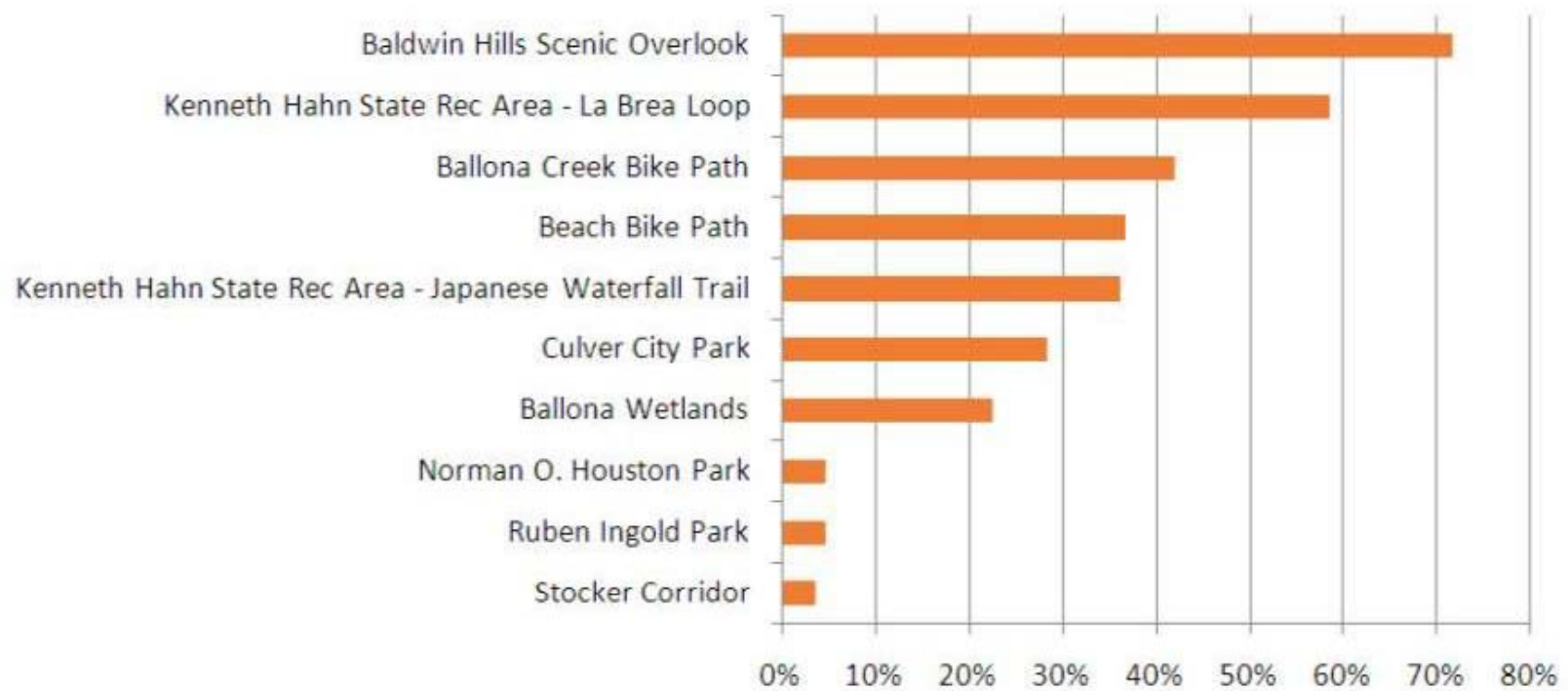
Weekly

Quarterly

# Web Survey Results

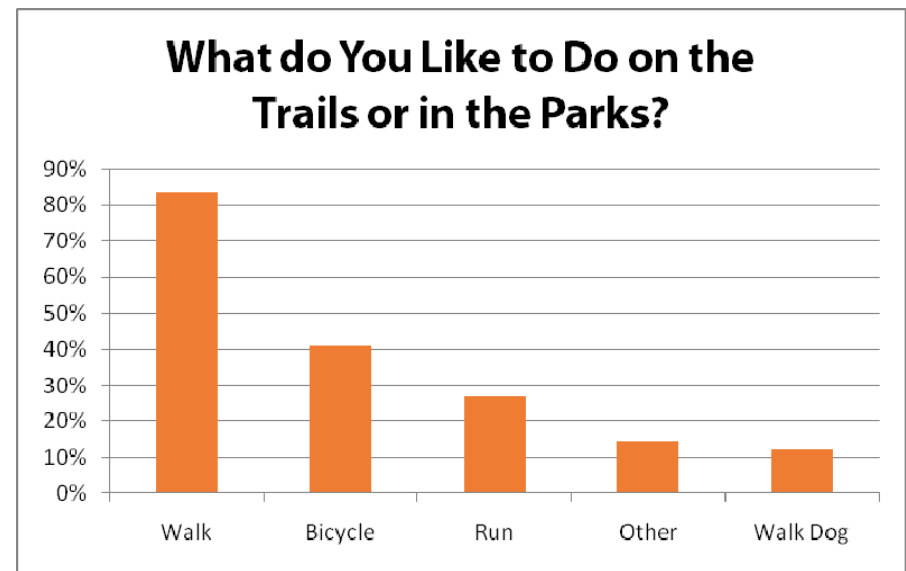
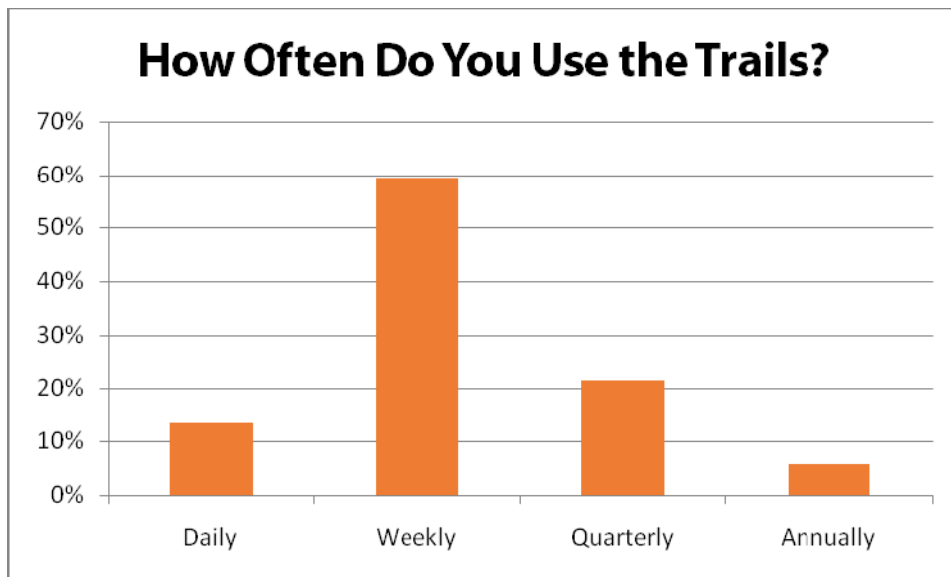
- 170 Responses
- Most Popular trails at BHSO & KHSRA

## Which Local Trails do You Use?



# Web Survey Results

- Weekly Users
- Most Popular Use is Walking



# Community Identified Needs

- Trail Use and Types
  - Both paved and natural surface trails
  - Parallel facilities for bicycle and pedestrian uses
  - Restore and preserve native habitat
- Access Improvements
  - Connection between BHSO and KHSRA
  - Connections TO the trail from other destinations
- Trail Amenities
  - Shaded rest areas with seating
  - Interpretive media and programs
  - Safety is a priority
- Trail Wayfinding
  - Trailhead markers with maps, signs and mile markers along trail route
  - Direct people to the trail from surrounding destinations



# Use Designations

- Consistent with existing park uses

Existing & Proposed Uses	
Allowed trail use is based upon individual park policies.	
Users	Accommodated?
Walkers/Joggers /Hikers	Yes
Cyclists (Road /Mt. Bike)	<b>Yes, Except :</b> <ul style="list-style-type: none"> <li>•Baldwin Hills Scenic Overlook</li> <li>•Culver City Park</li> <li>•Some segments of the trail may not accommodate road bike tires due to steep slopes or stairs.</li> </ul>
Dog Walkers (on leash)	<b>Yes, Except :</b> <ul style="list-style-type: none"> <li>•Baldwin Hills Scenic Overlook</li> <li>•Culver City Park (leashed dogs are only allowed on identified “pooch path”)</li> </ul>
Rollerbladers/ Stakeboarders	<b>Yes</b> <ul style="list-style-type: none"> <li>•Though unpaved trails will not be suitable</li> </ul>
Strollers	Yes
Equestrians	No



# Design Criteria

- Objective is guidelines consistent with the policies and practices of the agencies involved in the trail project.

Proposed Guideline Trail Criteria	
<b>Width</b>	6' minimum, up to 12' wide
<b>Surface</b>	Unpaved ,firm and stable surface (may be native earth, decomposed granite, aggregate road base or other material as suitable to setting)  Paved in areas of high use or adjacent to areas of high use (i.e. playgrounds)
<b>Cross Slope</b>	5% Max (3-4% cross slope to the outside/downhill edge for drainage)
<b>Running Slope (Gradient)</b>	0% - 5% (Max length: No restriction) 5.1% - 8.33% (Max length: 200' between resting intervals) 8.34% - 10% (Max length: 30' between resting intervals) 10.1 % - 12.5 % (Max length: 10' between resting intervals) Resting intervals must be at least 60" long, as wide as trail and max 1:20 (5%) gradient No more than 30% of the total trail length shall exceed 1:12



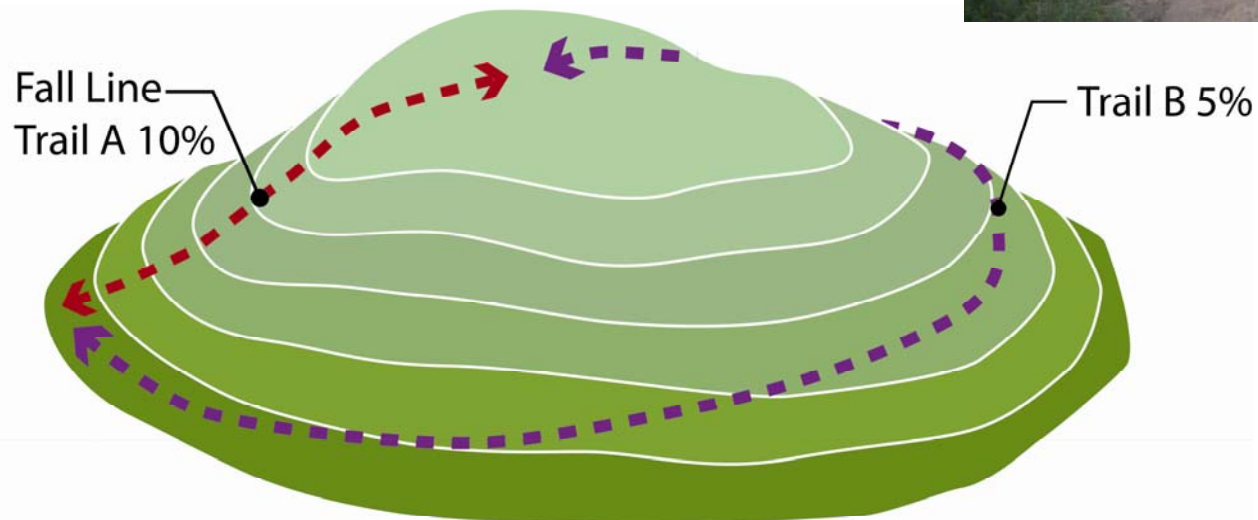
# Keep Water off the Trail

- Erosion is the number one problem for sustainable trails
- Avoid interrupting the natural drainage pattern



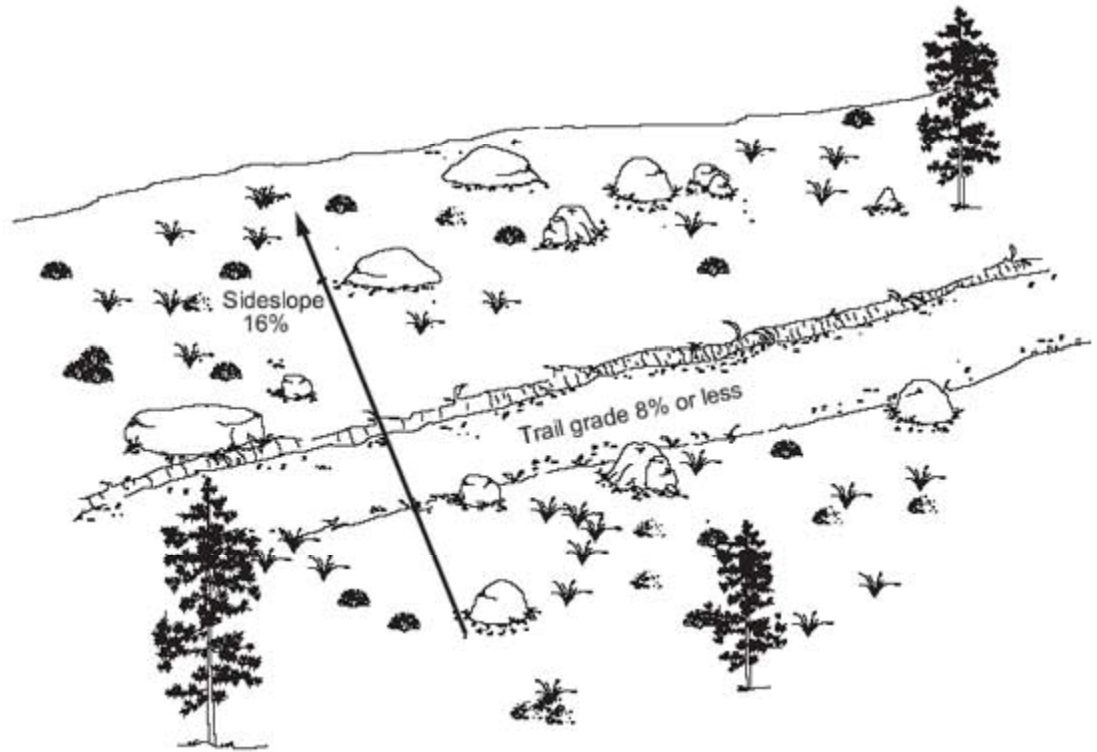
# Follow the Contours – Avoid the Fall Line

- This will allow runoff to cross the trail rather than run down it



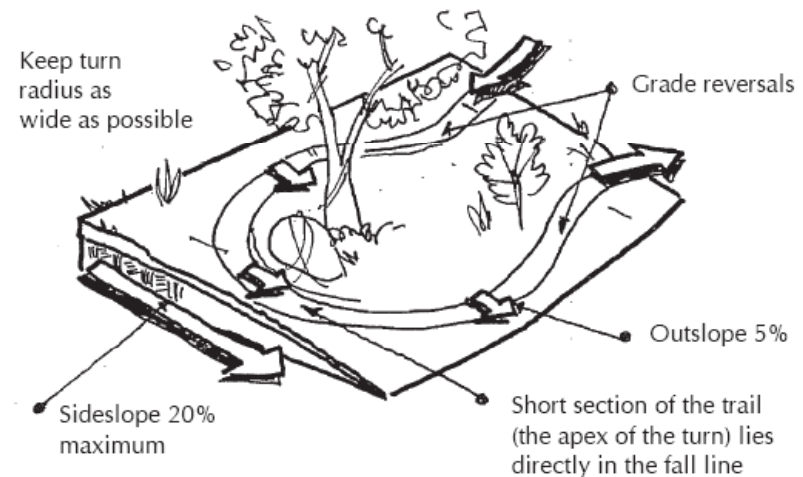
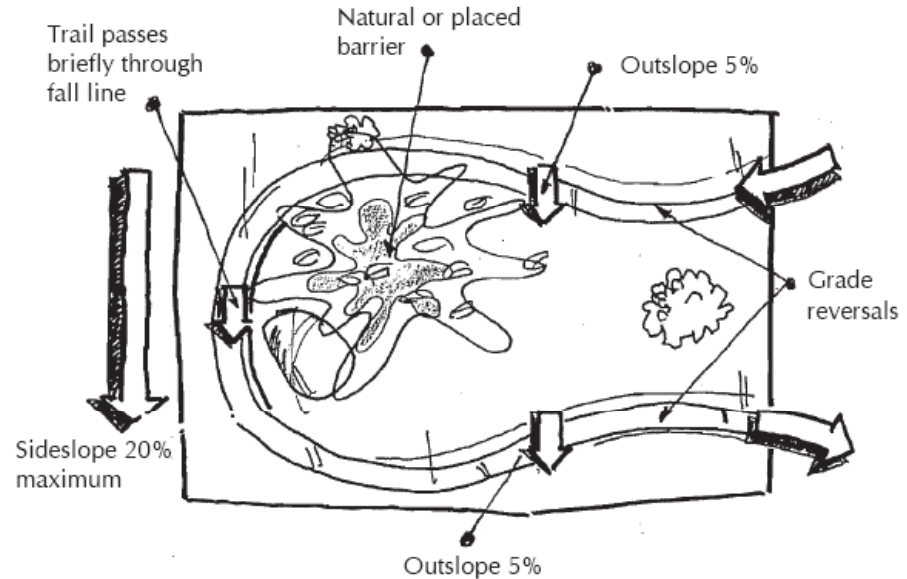
# Set Trail Gradient per the “Half” Rule

- Gradient (percent slope) no more than half the grade of the hillside it crosses
- Allows water to flow across the trail and continue down the slope



# Use Climbing Turns

- Maintains the existing grade going through the turn without a constructed landing
- Only feasible on slopes of less than 20%



# Avoid Switchbacks

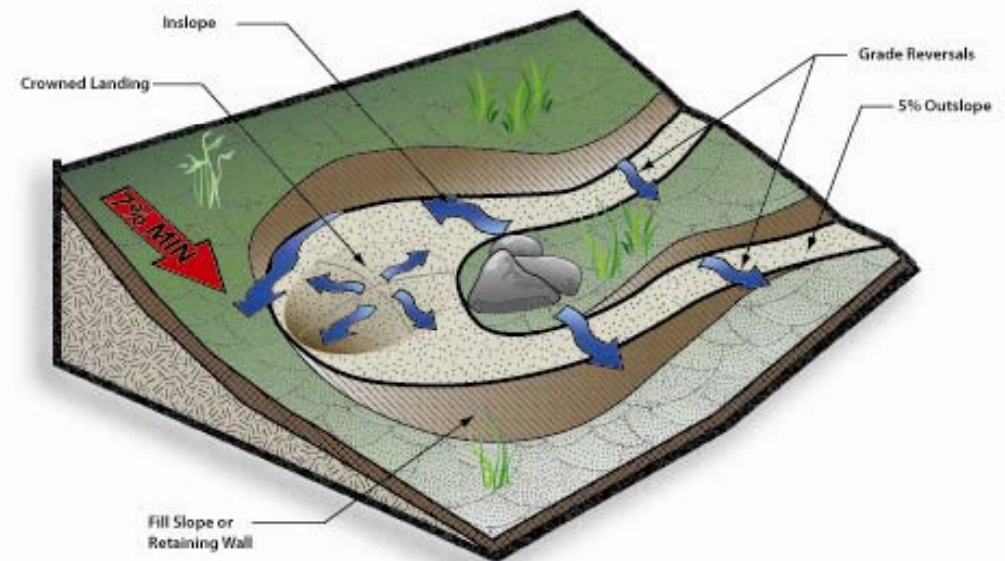
- Expensive, visually intrusive, obstacles for shared use, maintenance headaches, temptations for shortcutting
- May be only solution with constraints of rock outcrops, steep slopes, narrow trail corridors
- Typically used on terrain steeper than 15-20%



# If you Must Use Switchbacks

- Avoid stacking switchback turns on a hillside
- Use trail segments of varying lengths between
- Use a design with a crowned landing

Switchback with Crowned Landing

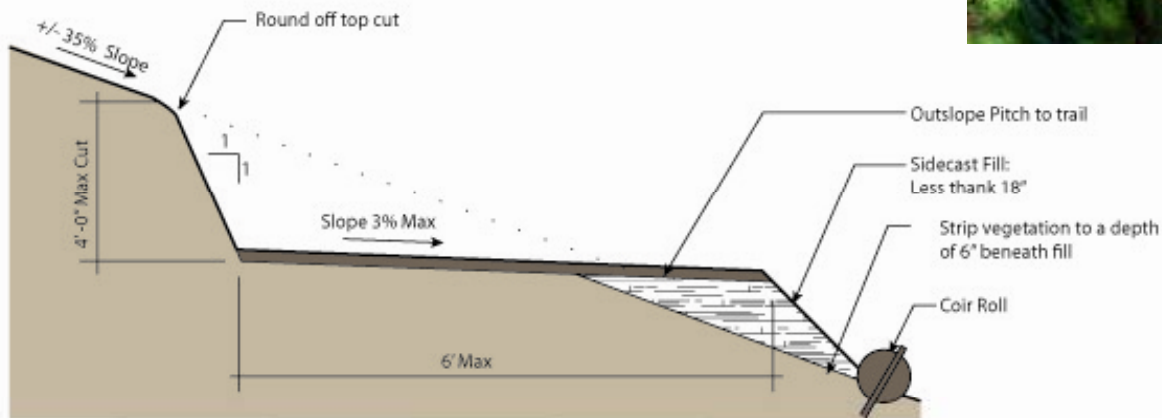


# Use a Full Bench Trail on Steep Slopes

- A partial bench trail is only suitable on relatively gentle slopes



Partial Bench





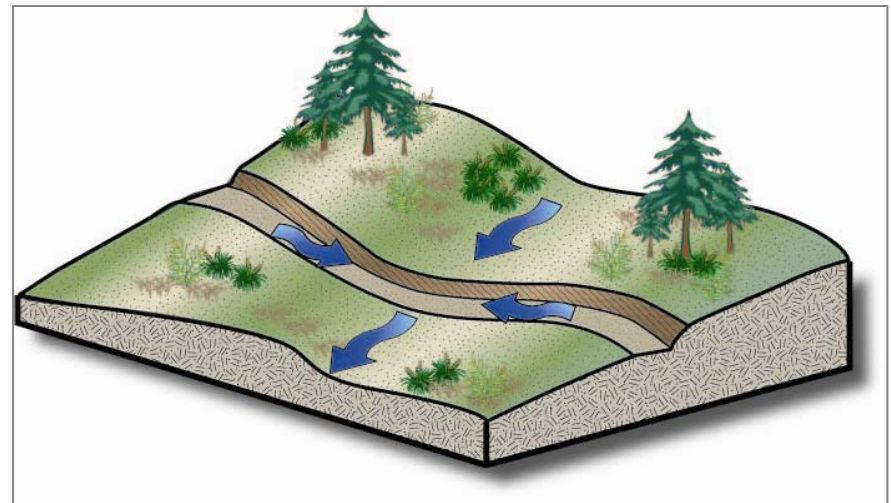
# Outslope the Tread

- Trail tread should be outsloped (sloped away from the hillside) at 3% to 4%



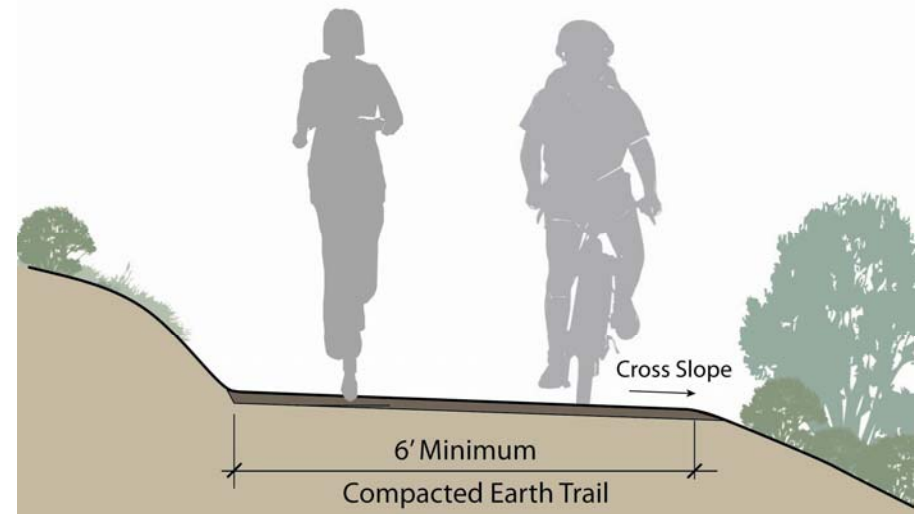
# Design With a Rolling Grade

“a series of dips, crests, climbs, drainage crossings, and edge buffers that are intrinsically linked and purposefully designed to form a sustainable trail” (Trail Planning, Design, and Development Guidelines [MN DNR, 2006], 6.13)



# Design Recommendations

- Trail Realignment/ Improvement
- Trail Restoration
  - Closing the facility
  - Restoring natural drainage patterns
  - Temporary erosion control
  - Restoring soil
  - Replanting



# Design Options

## Design Theme 1

### Benches



## Design Theme 2

### Benches



### Fencing at Gateways



### Trash Receptacles



### Fencing at Gateways



### Trash Receptacles



### Fencing Along Private Property



### Shade Structures



# Design Options

## Gateways



## Bike Parking



## Landscaping Concept



## Native Landscape Plants



*Achillea millefolium* (Yarrow)

*Carpenteria californica* (Bush anemone)

*Muhlenbergia rigens* (Deer grass)

*Ceanothus Ray Hartman* (Buckthorn)

*Epilobium canum* (Zauschneria)

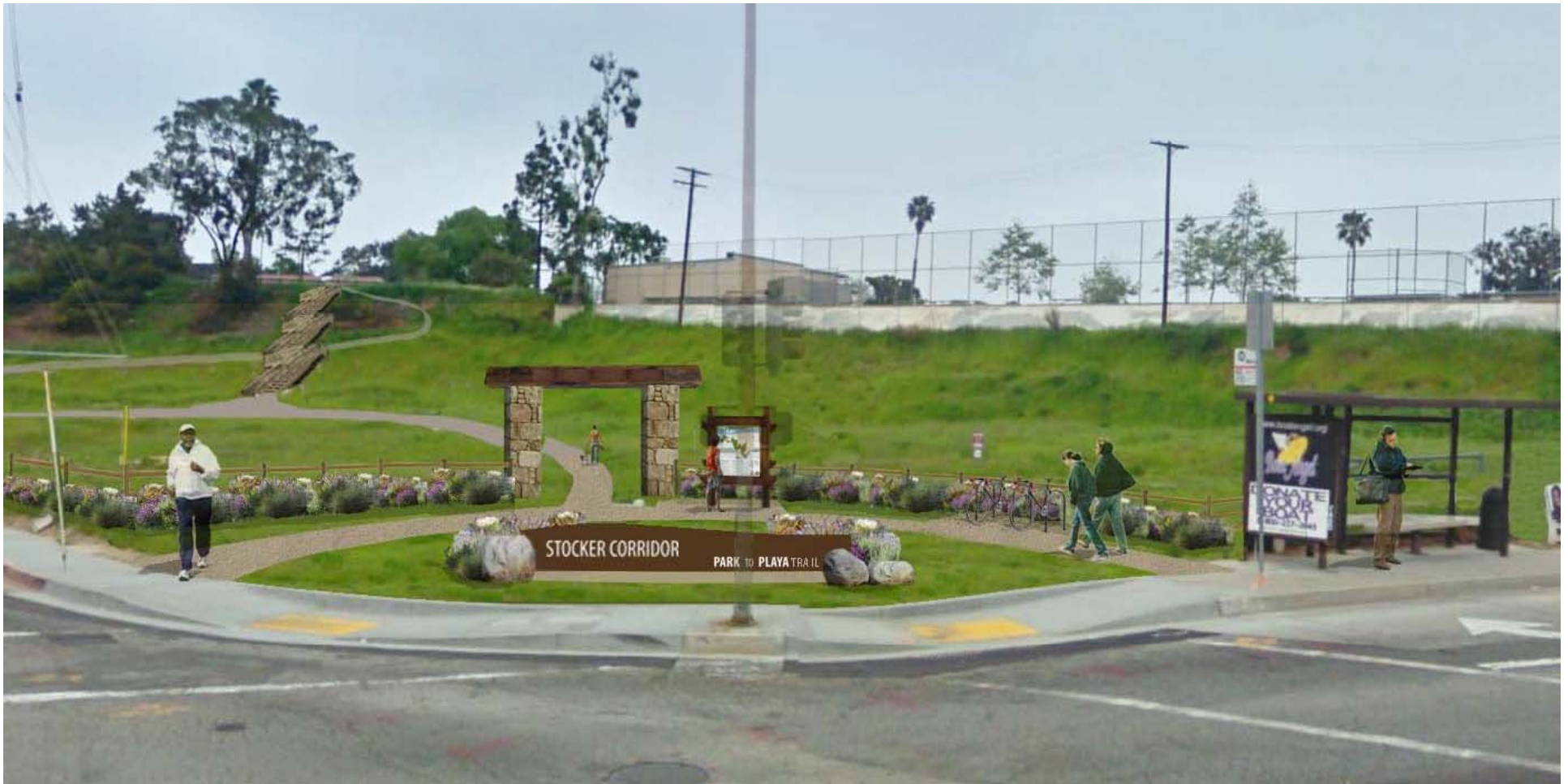
*Rosa californica* (Wild rose)

*Salvia spathacea* (Pitcher sage)

*Baccharis pilularis* (Pigeon point)

*Lotus scoparius* (Deerweed)

# Design Options – Trail Entry



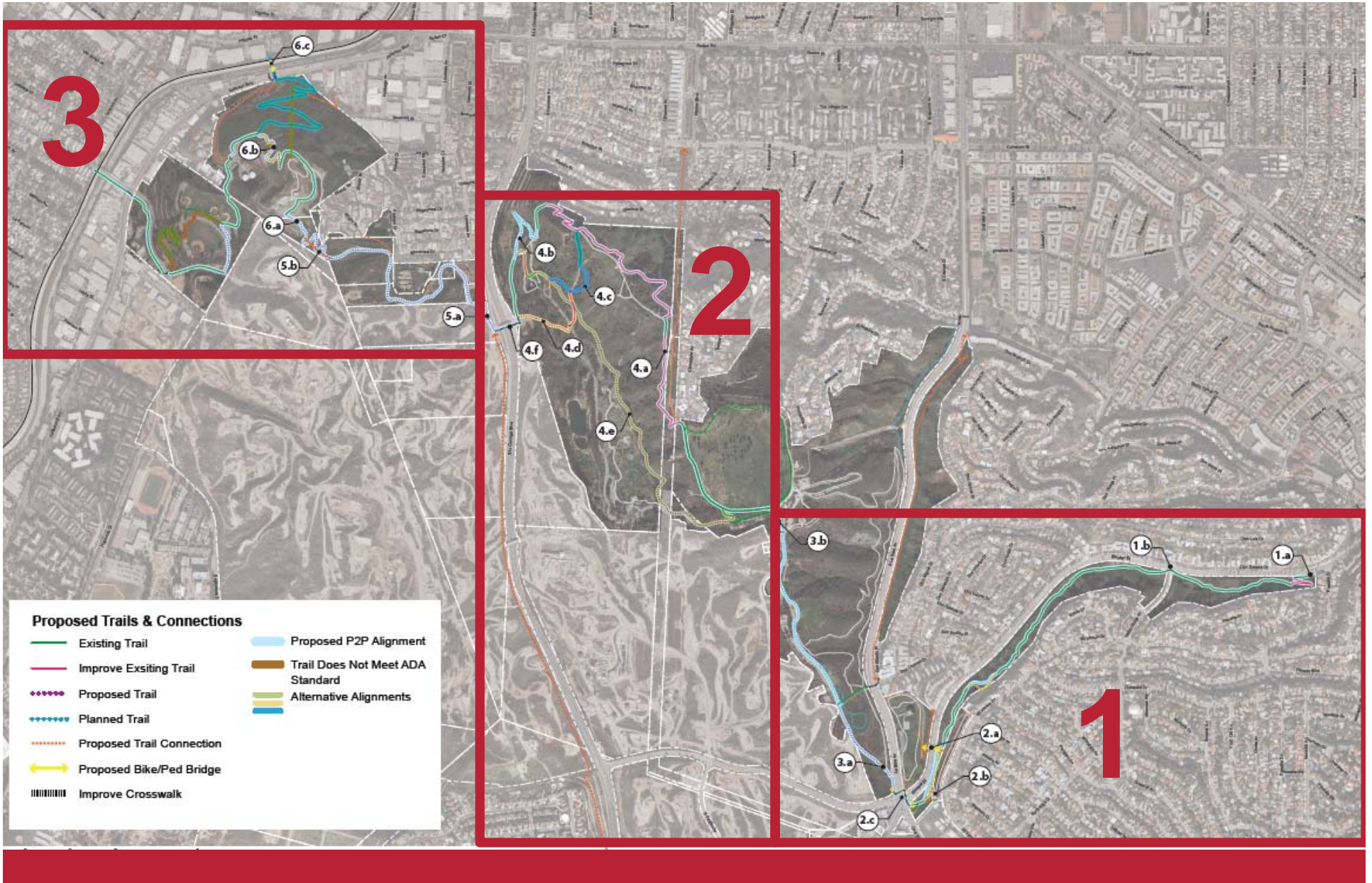
# P2P Signage and Wayfinding Goals

---



- Create a Park to Playa identity to make it a memorable trail
- Improve awareness of the trail– increase use and usefulness
- Provide legibility – public can find and follow the trail in the field
- Provide a greater sense of security and comfort
- Increase the number of bicycle and walking trips
- Better agency and inter-agency planning, coordination and management
- Improved emergency and maintenance access/coordination

# Alignment Alternatives By Table





# Next Steps



- Review Workshop Input and publish summary on web [www.bhc.ca.gov](http://www.bhc.ca.gov) or [smmc.ca.gov/BHRCA.asp](http://smmc.ca.gov/BHRCA.asp)
- Finalize recommendations
- Review with Agency Partners and finalize plan
- Public Workshop #3
- Present to Agency Board and Councils