



Park to Playa Trail

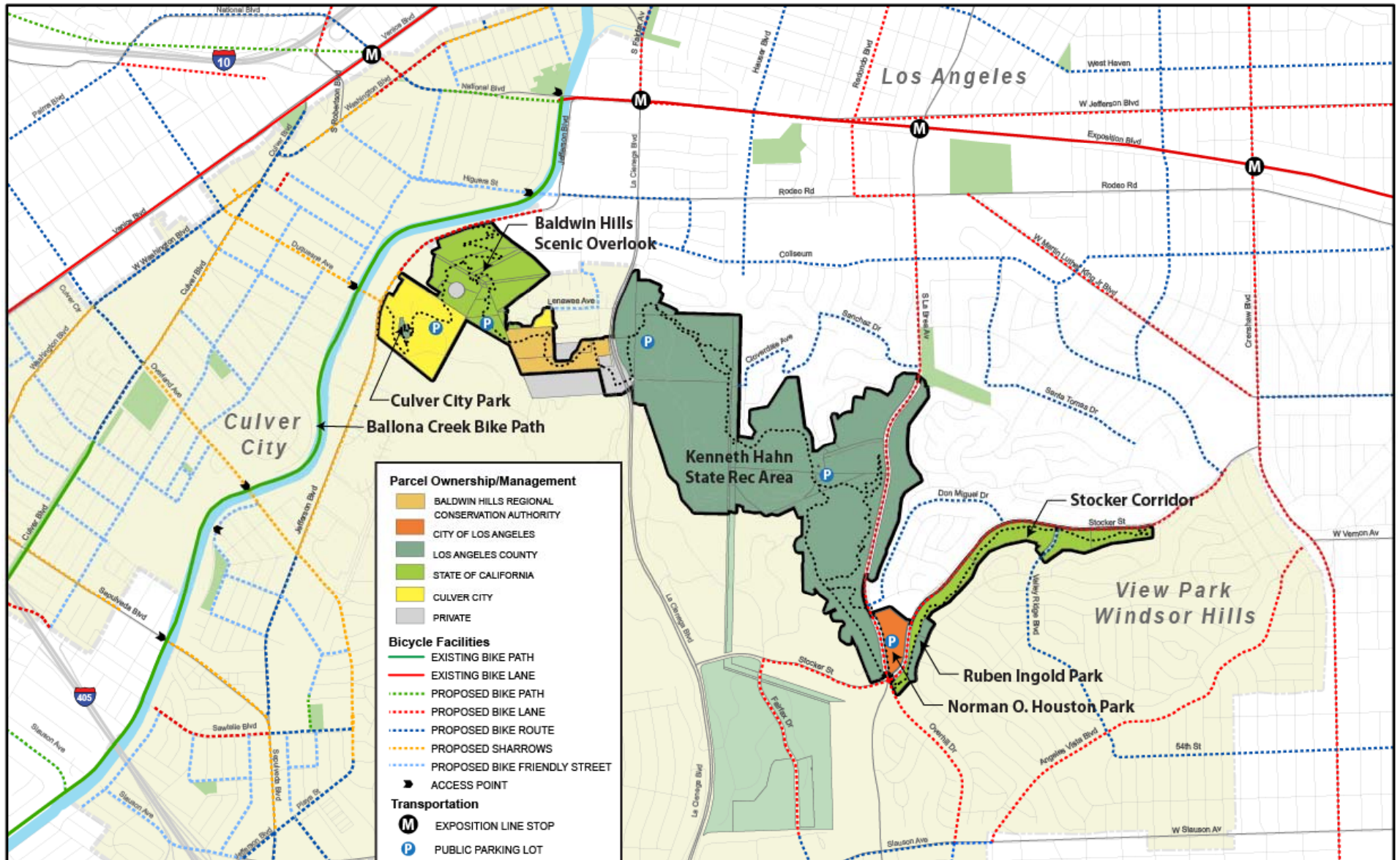
Public Workshop #1

January 25, 2011

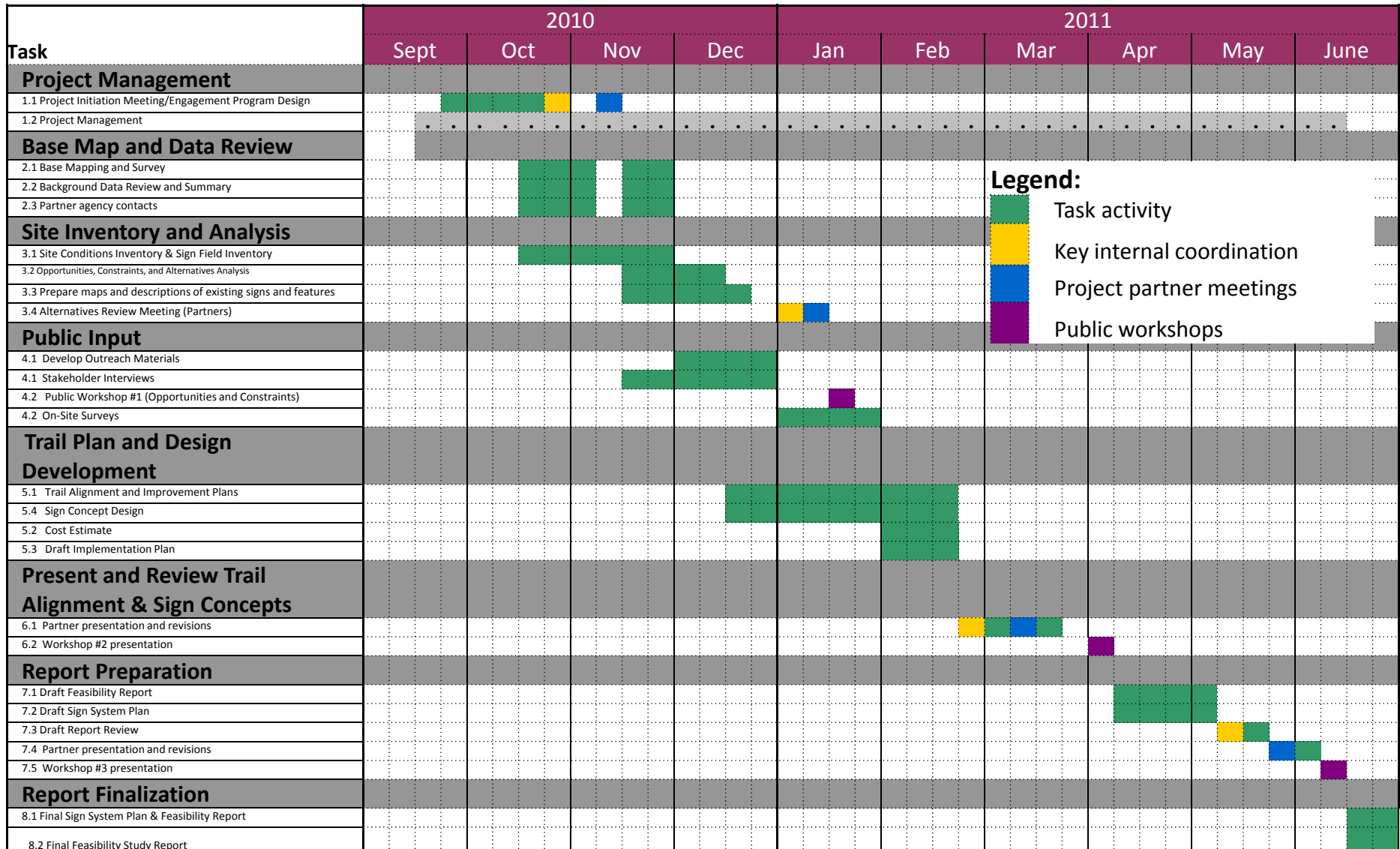
Project Funded By: Baldwin Hills Regional Conservation Authority



Park to Playa Trail Study Corridor



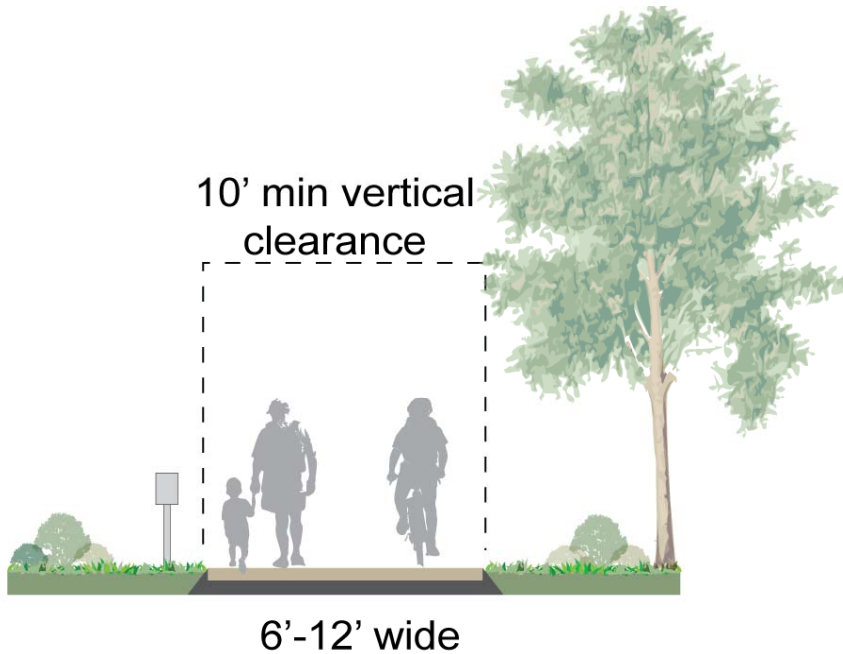
Project Schedule



Legend:

- Task activity
- Key internal coordination
- Project partner meetings
- Public workshops

Typical Trail Cross Section



Proposed Trail Standards	
Width	6'-12' wide
Surface	Unpaved ,firm and stable surface. Paved in areas of high use or adjacent to areas of high use (i.e. playgrounds)
Cross Slope	5% Max
Running Slope	0% - 5% (Max length: No restriction) 5.1% - 8.33% (Max length: 200') 8.34% - 10% (Max length: 30')

Existing & Proposed Uses	
Allowed trail use is based upon individual park policies.	
Users	Accommodated?
Walkers/Joggers /Hikers	Yes
Cyclists (Road /Mt. Bike)	Yes Excluding : •Baldwin Hills Scenic Overlook •Culver City Park •Some segments of the trail may not accommodate road bike tires due to steep slopes or stairs.
Dog Walkers (on leash)	Yes Excluding : •Baldwin Hills Scenic Overlook •Culver City Park (leashed dogs are only allowed on identified "pooch path")
Rollerbladers/ Stakeboarders	Yes •Though unpaved trails will not be suitable
Strollers	Yes
Equestrians	No

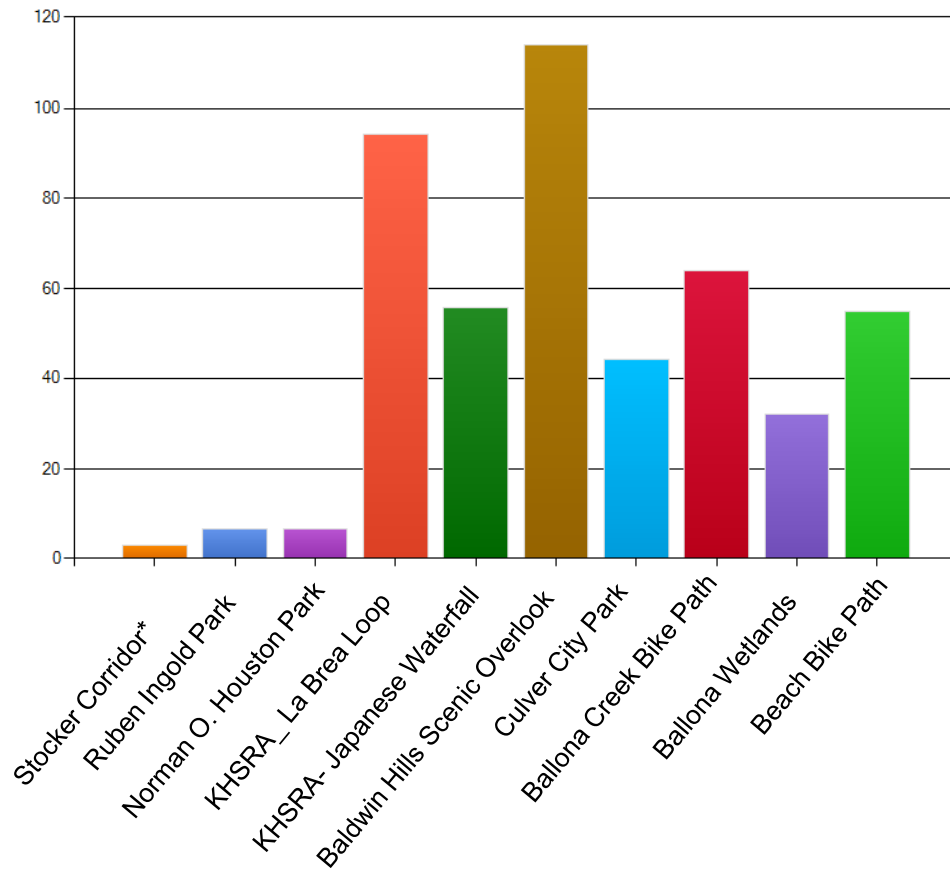
Take Our Web Survey



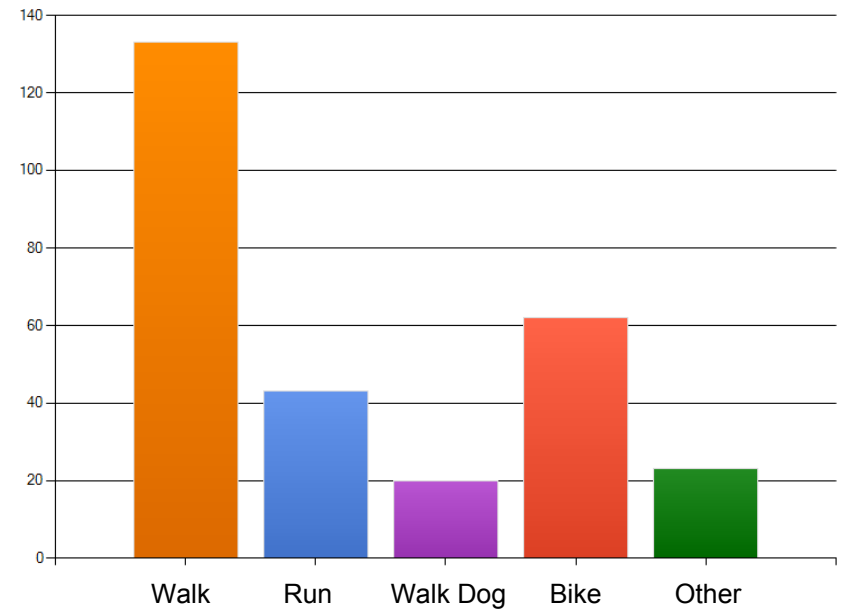
www.surveymonkey.com/park2playa

Survey open until Feb. 14th

Which local trails do you use?

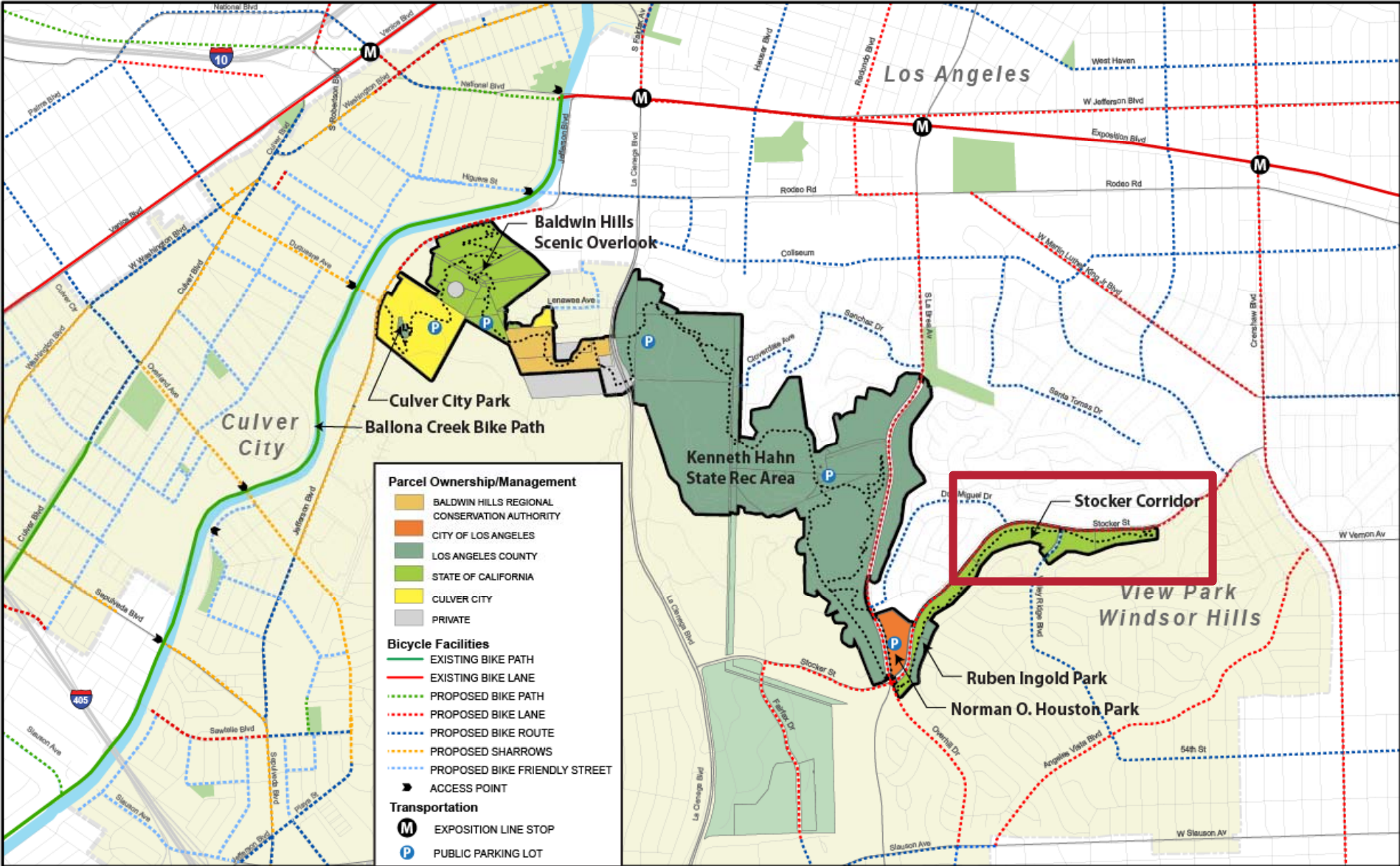


What do you like to do on the trails?



162 Responses to date

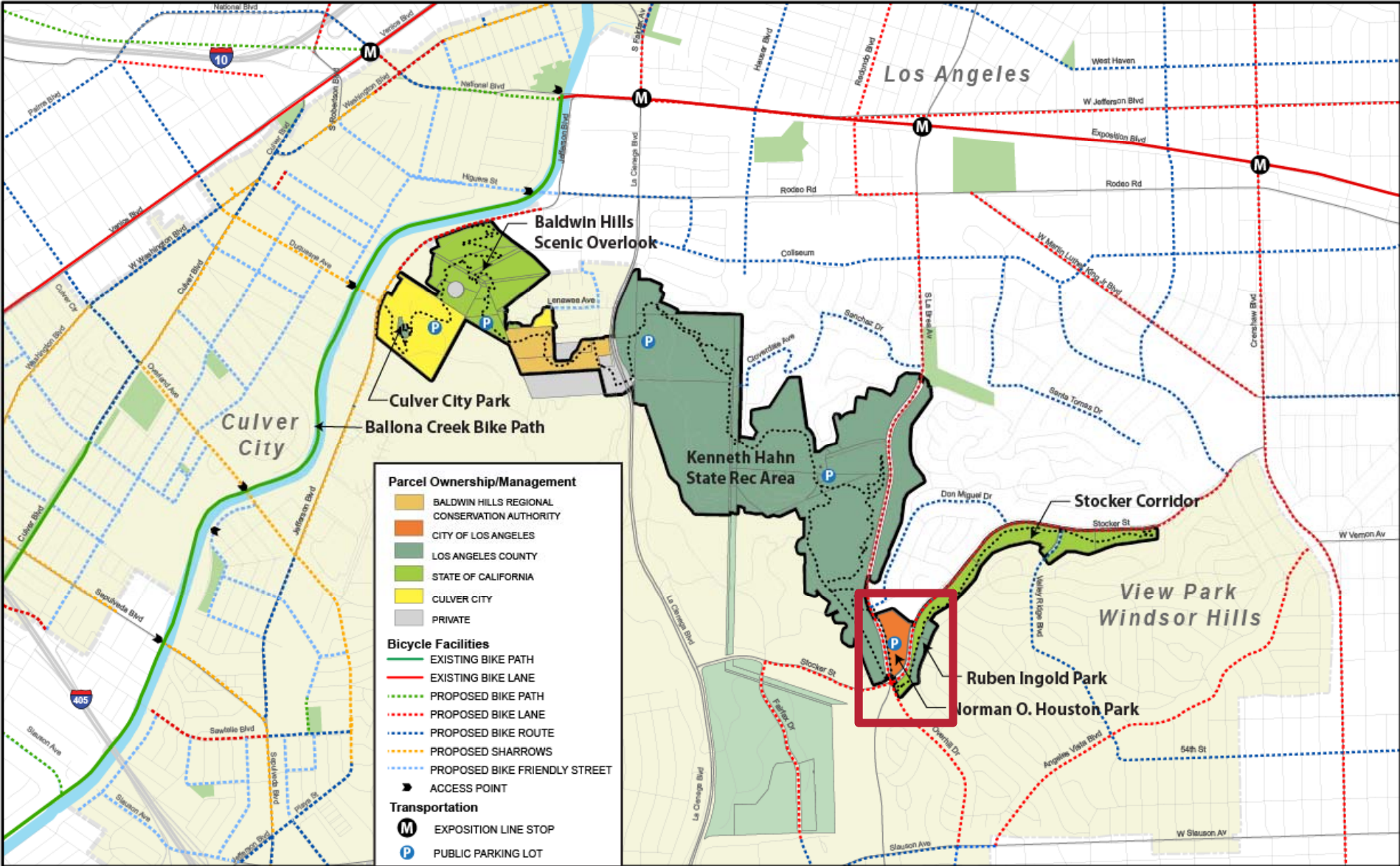
Stocker Corridor East

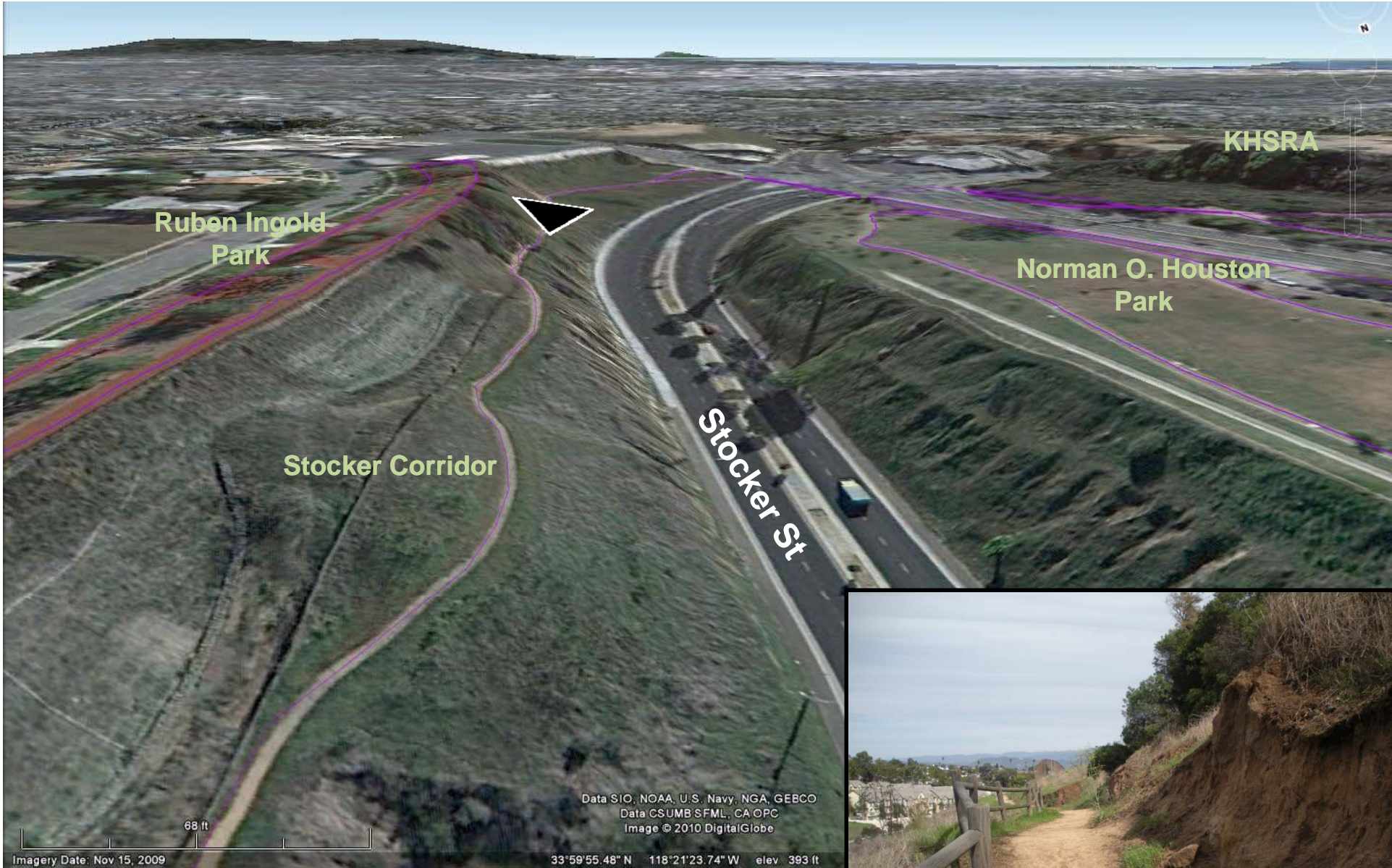


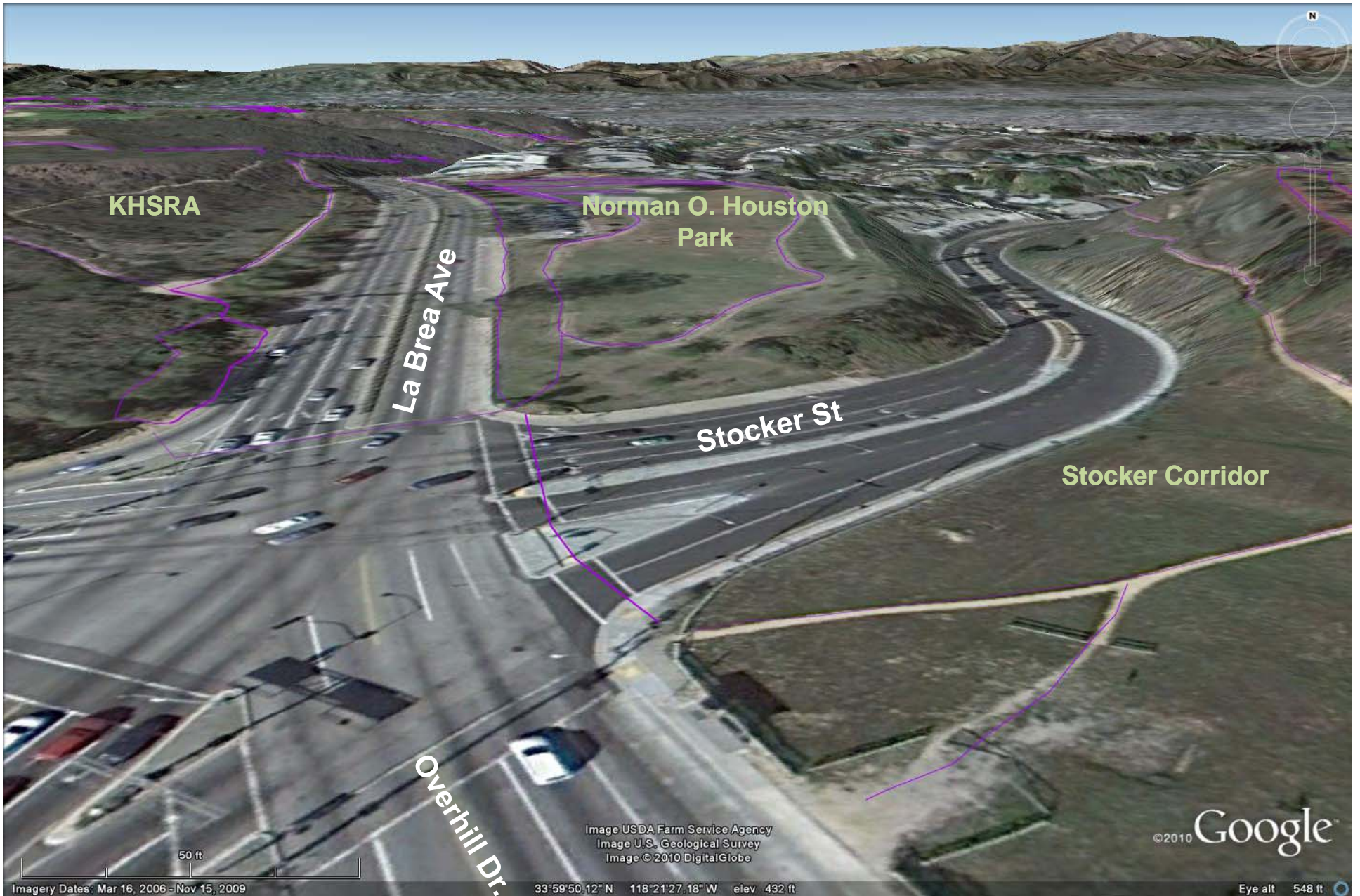




Stocker Corridor West / 5 Points Intersection







KHSRA

Norman O. Houston
Park

La Brea Ave

Stocker St

Stocker Corridor

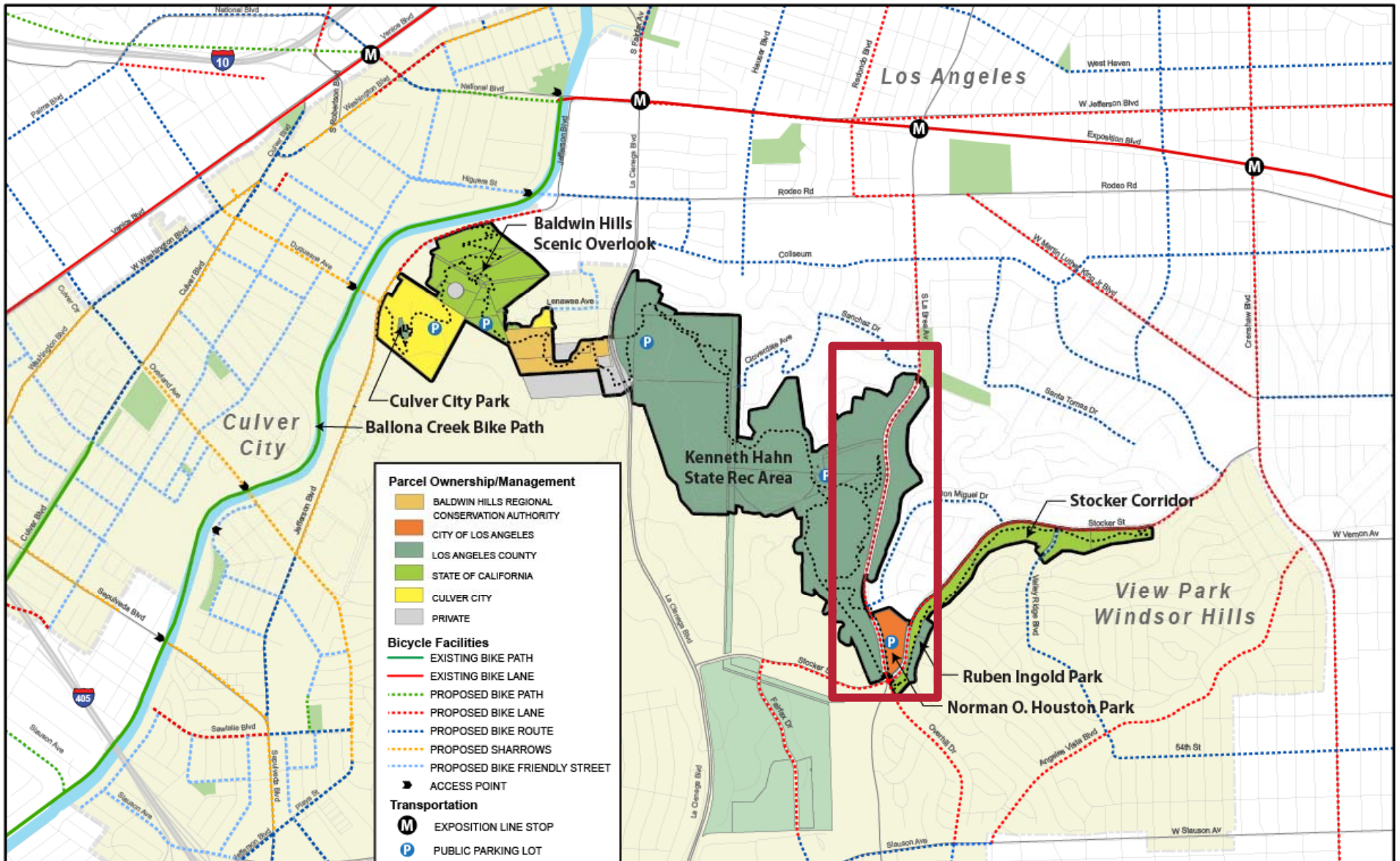
Overhill Dr.

Image USDA Farm Service Agency
Image U.S. Geological Survey
Image © 2010 DigitalGlobe

©2010 Google

Eye alt 548 ft

Eastern Ridgeline





KHSRA

La Brea Ave

Don Lorenzo Dr.

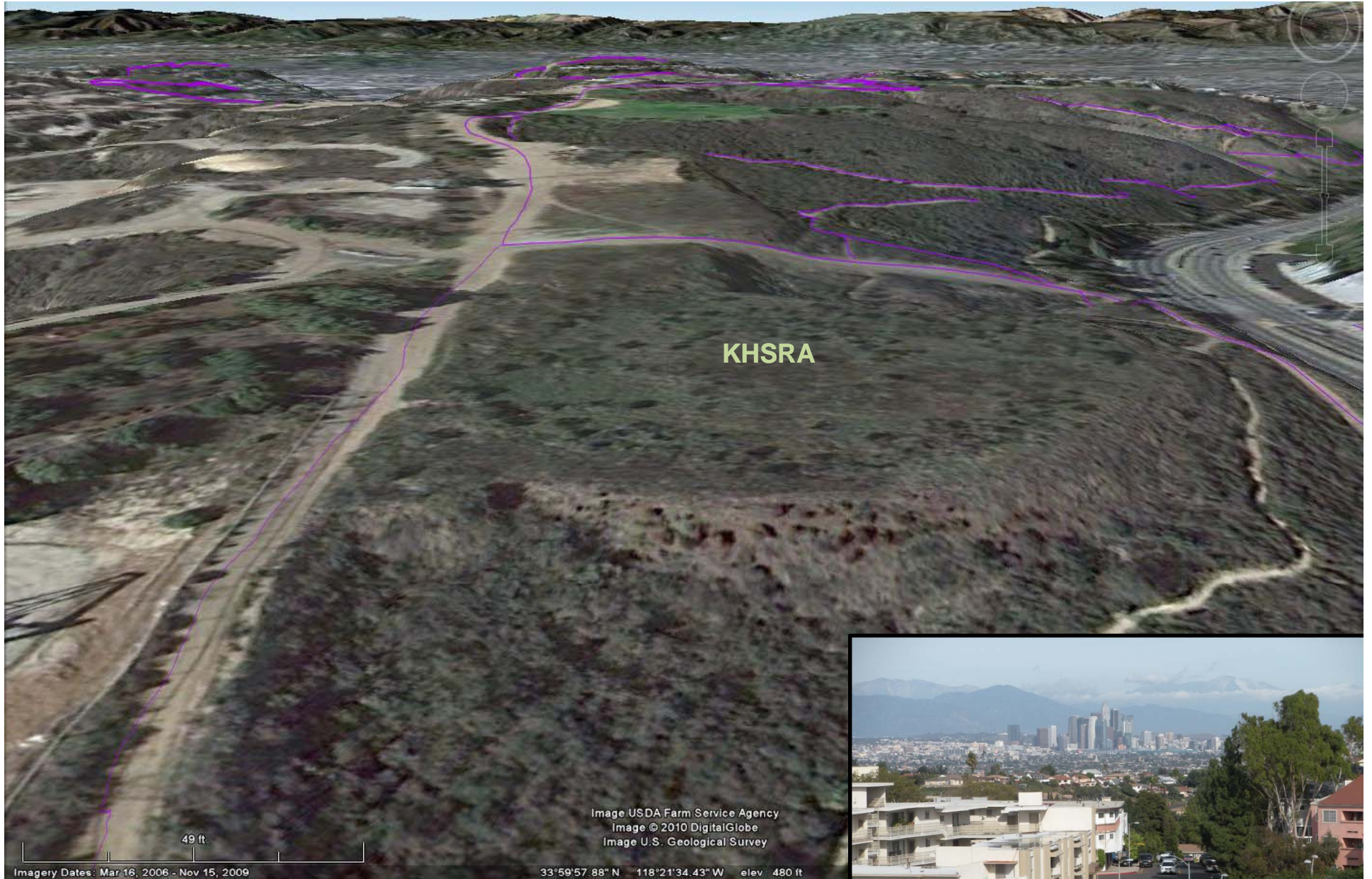
Norman O. Houston Park

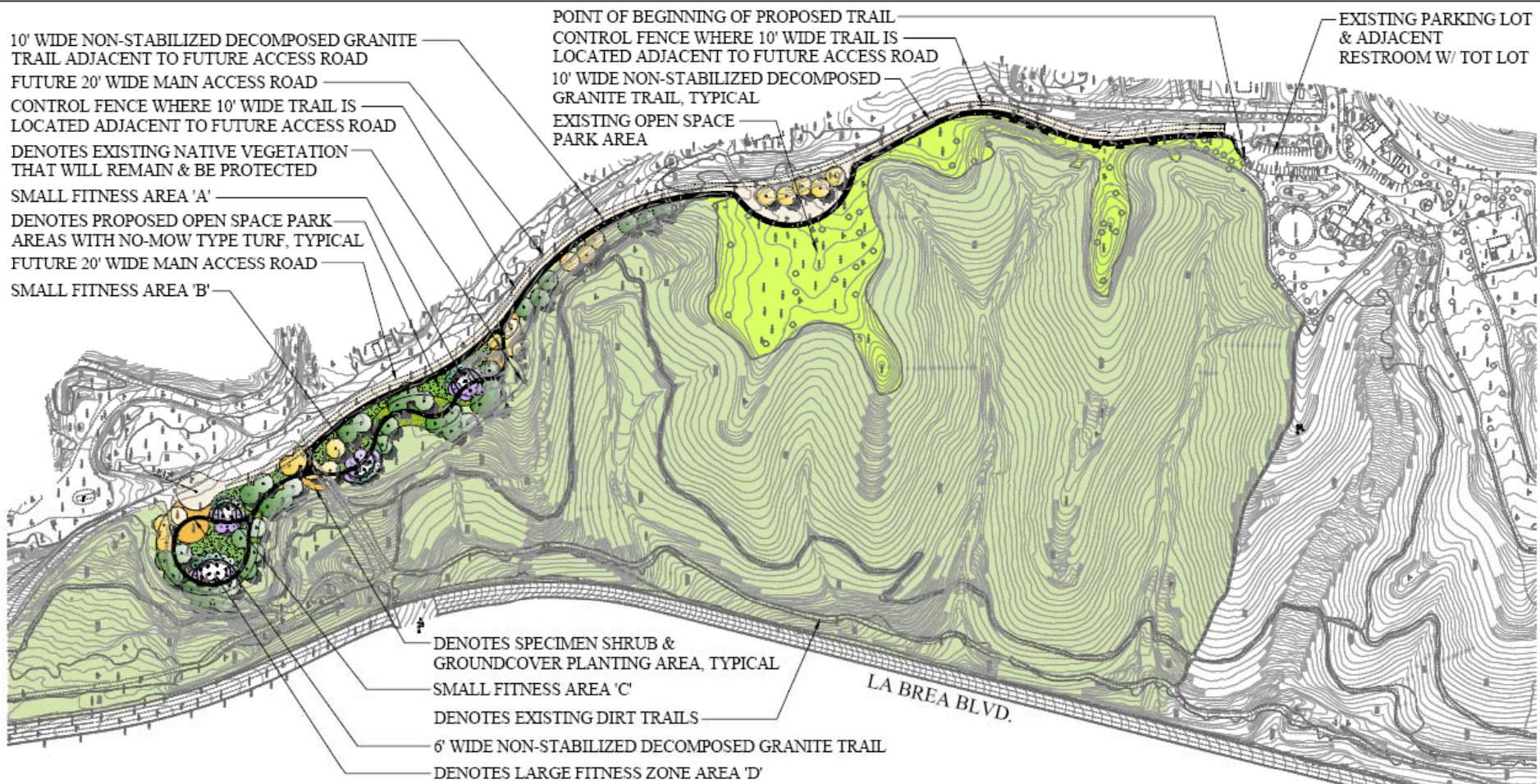
Data SIO, NOAA, U.S. Navy, NGA, GEBCO
©2010 Google
Image U.S. Geological Survey

34°00'00.63" N 118°21'31.66" W elev 433 ft

©2010 Google

Eye alt 593 ft



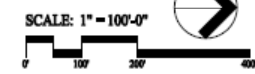


SCHEMATIC LAYOUT PLAN

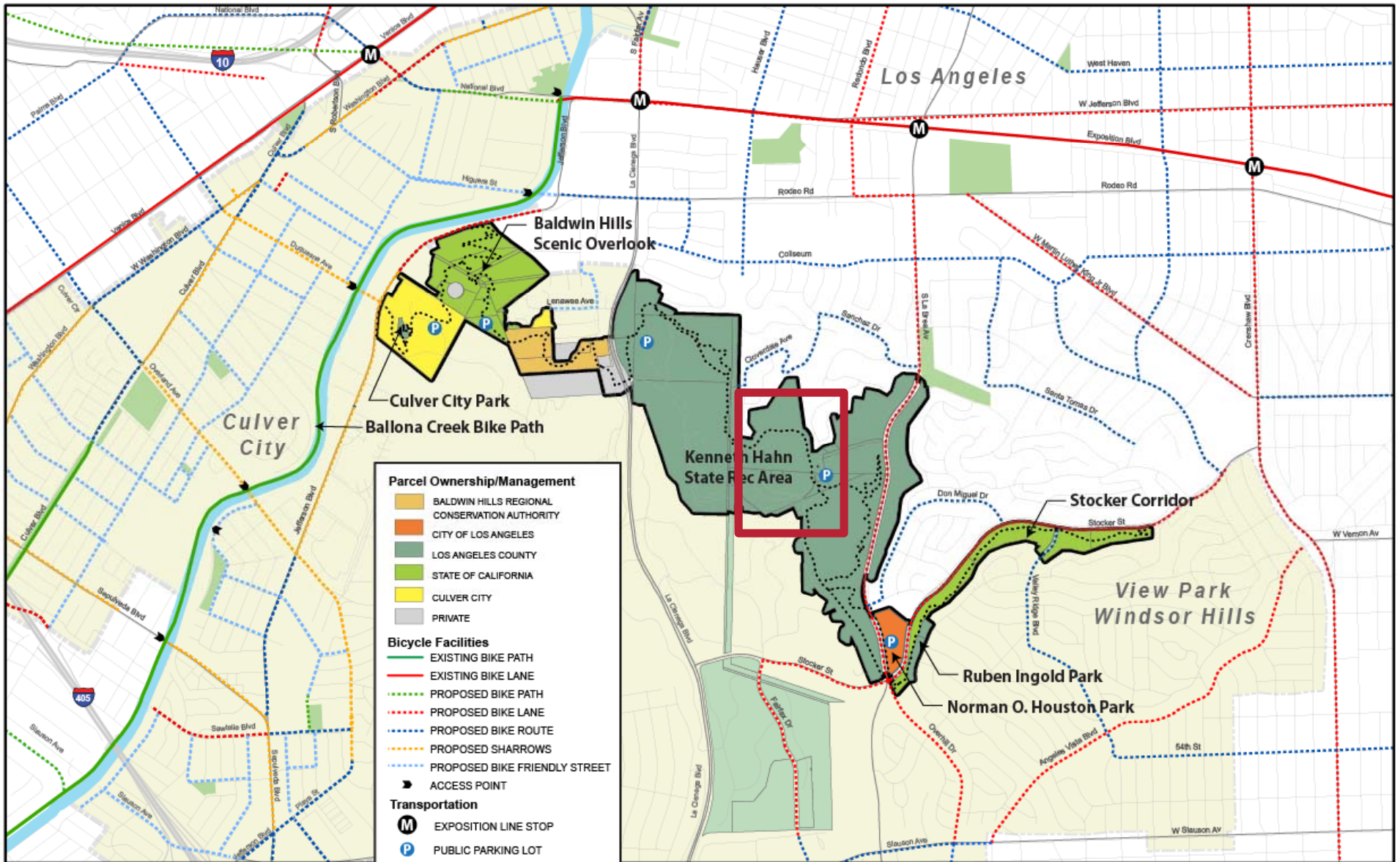
Kenneth Hahn Eastern Ridge Line Project

Capital Project No. 69253, Project ID. No. P200000655, Design Phase

Project Site Address: Kenneth Hahn State Recreational Area, 4100 La Cienega Boulevard, Los Angeles, CA 90056



KHSRA Janice's Green Valley





©2010 Google

Imagery Date: Nov 15, 2009

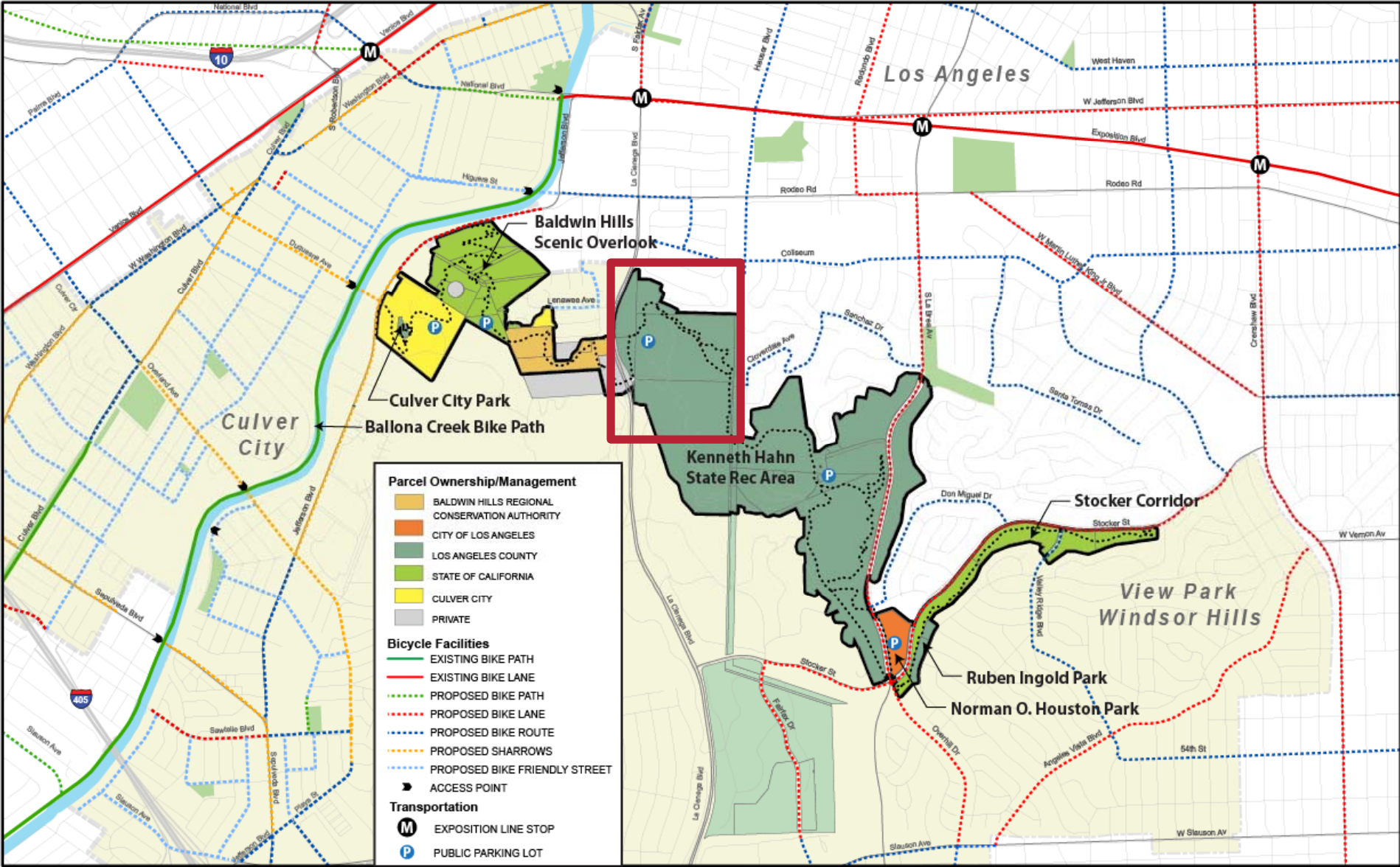
34°00'23.13" N 118°21'43.85" W elev 488 ft

Eye alt 795 ft





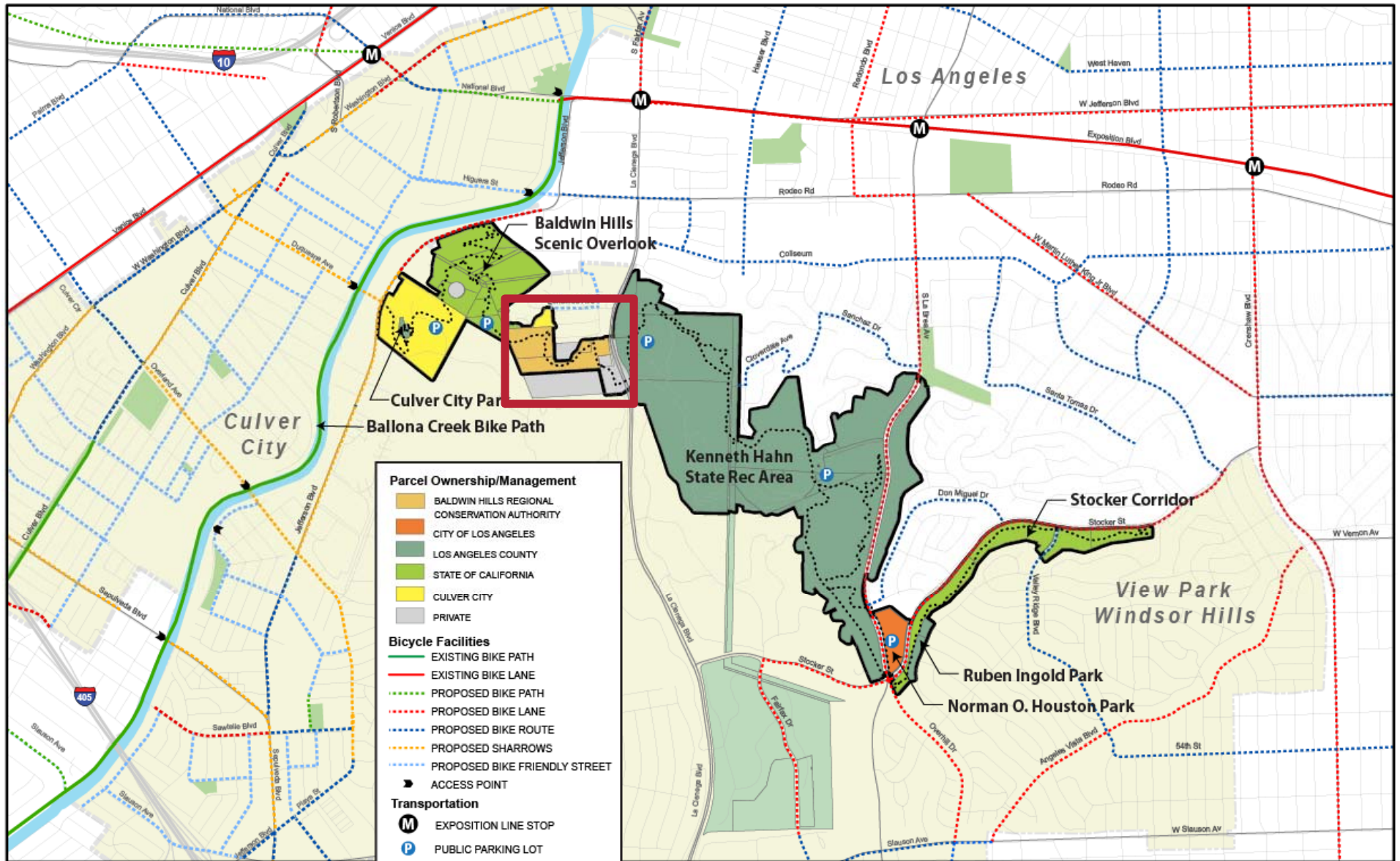
KHSRA Western Ridgeline







Baldwin Hills Regional Conservation Authority Property





Baldwin Hills Regional
Conservation Authority

Moynier Property

La Cienega Blvd

Data SIC, NOAA, U.S. Navy, NGA, GEBCO
Image © 2010 DigitalGlobe
Image U.S. Geological Survey

©2010 Google

Imagery Dates: Sep 1, 2007 - Nov 15, 2009

34°00'47.11" N 118°22'28.27" W elev 191 ft

Eye alt 462 ft



Baldwin Hills Regional Conservation Authority

BHSO

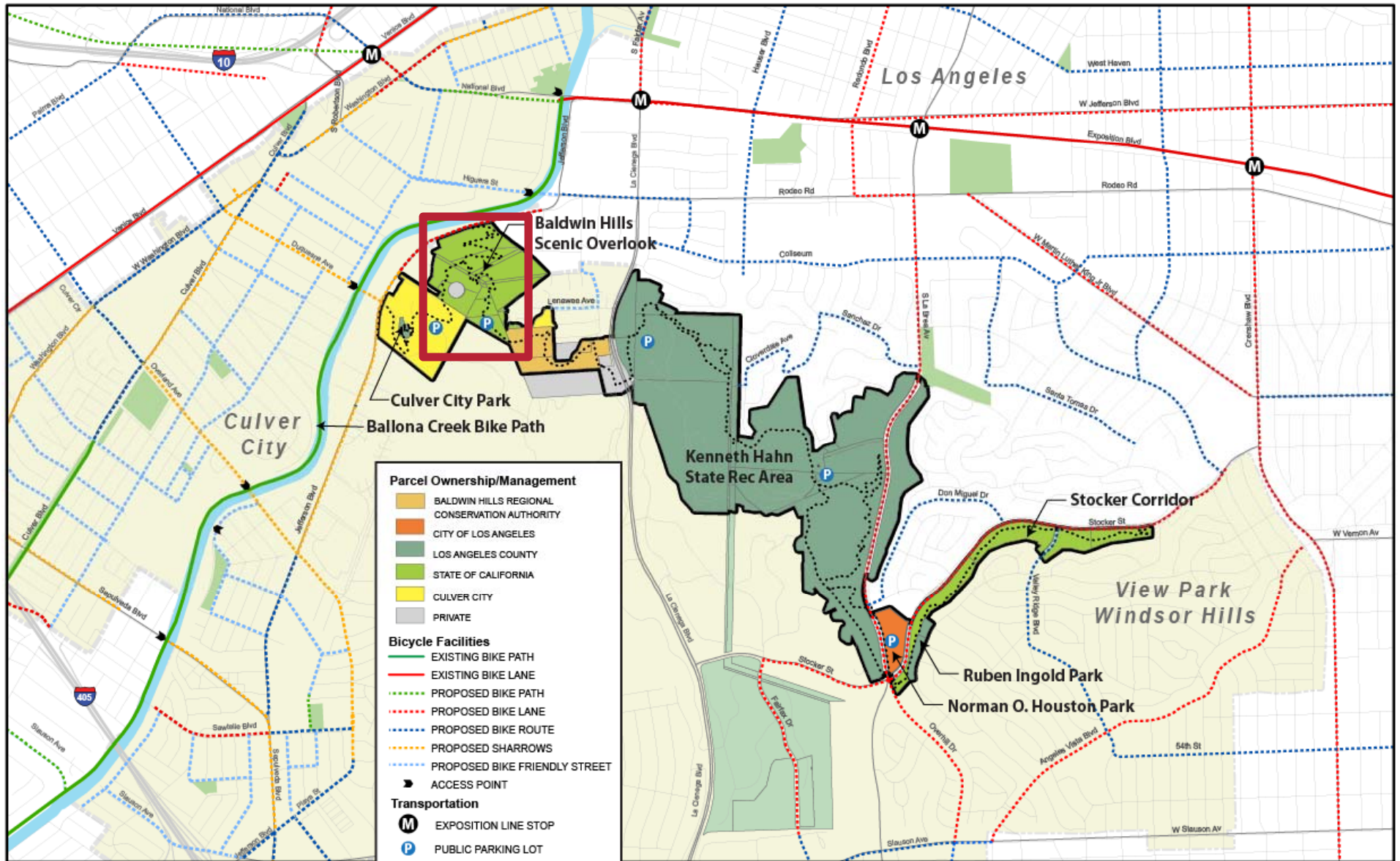
Blair Hills Park

©2010 Google

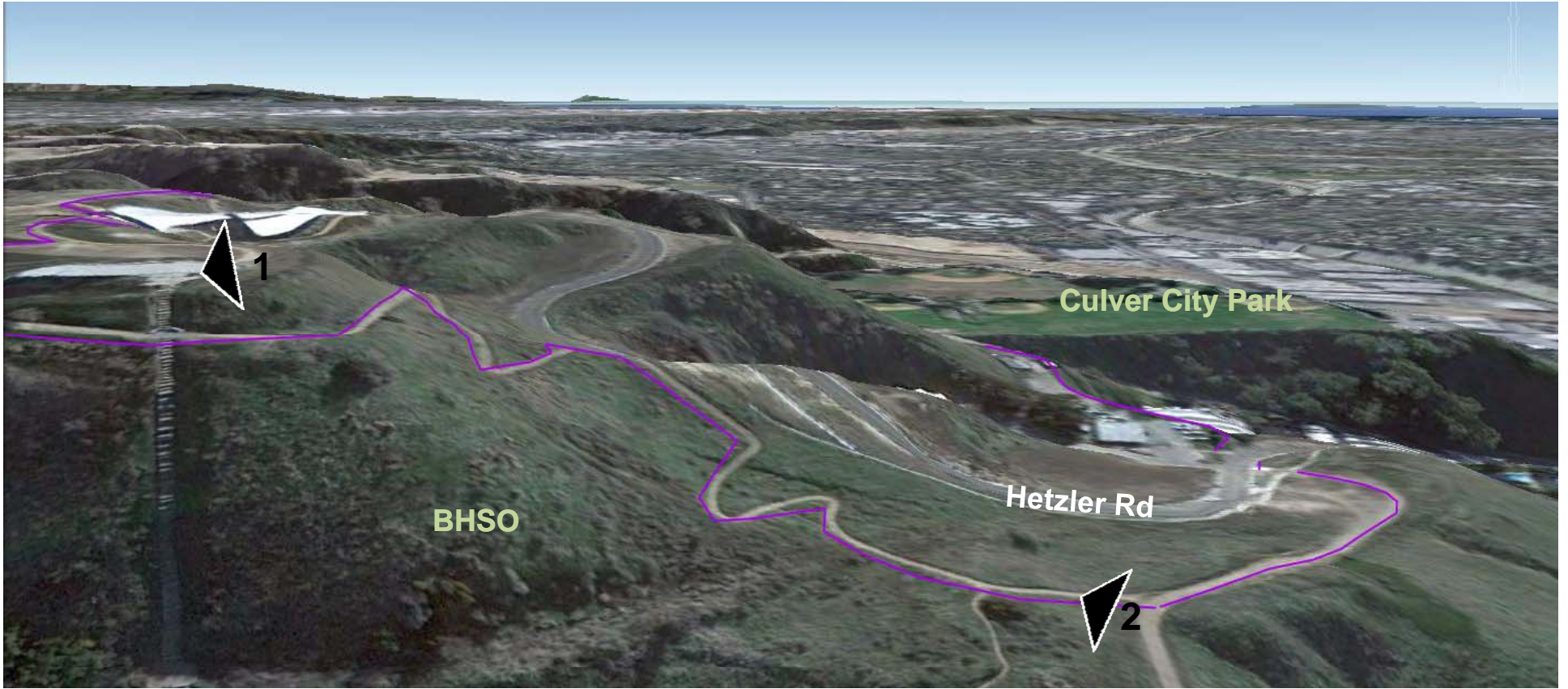
52.50° N 118°22'41.92" W elev. 332 ft

Eye alt 570 ft

Baldwin Hills Scenic Overlook









Culver City Park

Jefferson Blvd

Ballona Creek Path

Duquesne Ave

290 ft

Data SIO, NOAA, U.S. Navy, NGA, GEBCO
Image © 2011 DigitalGlobe

Data CSUMB/SFML, CA OPC

34°00'55.40" N 118°23'19.73" W elev 86 ft

©2010 Google

Eye alt 750 ft