

## **BALDWIN HILLS CONSERVANCY NOTICE OF PUBLIC MEETING**

The meeting of the Baldwin Hills Conservancy (BHC) will be held  
Friday, May 18, 2018, 10:00 AM - 12:00 PM  
Kenneth Hahn State Recreation Area Community Room  
4100 South La Cienega Blvd. Los Angeles, CA 90056  
(323) 298-3660

### **Teleconference Location**

Natural Resources Agency  
1416 Ninth Street, 13<sup>th</sup> Floor, Room 1305  
Sacramento, California 95814

**10:00 AM - CALL TO ORDER – Jacquelyn Dupont-Walker, Chair**

### **MEETING AGENDA**

PUBLIC COMMENTS ON AGENDA OR NON-AGENDA ITEMS SHOULD BE SUBMITTED BEFORE ROLL CALL

***Public Comment and Time Limits: If you wish to speak on an agenda item, please complete a speaking card available near the door to the meeting room. Individuals wishing to comment will be allowed up to three minutes to speak. Speaking times may be reduced depending upon the number of speakers.***

1. Roll Call – Avril LaBelle, Executive Secretary
2. Approval of Minutes (March) – Jacquelyn Dupont-Walker, Chair
3. Public Comments – Jacquelyn Dupont-Walker, Chair
4. Consideration of a Resolution Authorizing a Proposition 1 Local Assistance Grant in an Amount Not to Exceed \$1,500,000 to the California Conservation Corps Foundation (CCCCF) for the Stormwater Management Project at the Yvonne Brathwaite Burke Sports Complex – Daniel Sciolini, Project Manager
5. Consideration of a Resolution Authorizing an Amendment to the Project Term and Budget for Proposition 84 Agreement #BHC15002 with Culver City, for the Park to Playa - Ballona Creek Connection– Noa Rishe, Project Manager
6. Update Presentation on the Baldwin Hills Parklands Conservation Program – Stacey Vigallon, Los Angeles Audubon Society, and West Los Angeles College Interns
7. Executive Officer Report: Legislative, Project Status, and Fiscal updates – BHC Staff Representatives
8. Board Member Announcements or Proposed Agenda Items for Future Meetings

*\*Next meeting is tentatively scheduled for **June 22, 2018.***

### **ADJOURNMENT**

*In accordance with the Americans with Disabilities Act of 1990, if you require a disability related modification or accommodations to attend or participate in this meeting, including auxiliary aids or services, please call the Conservancy at (323) 290-5270 at least five days prior to the meeting. For more information about the Conservancy, you may visit our website at [www.bhc.ca.gov](http://www.bhc.ca.gov)*

*Be it known pursuant to Government Code Sections 54956.8, 54956.9, the Conservancy may hold a closed session to discuss and take possible action regarding instructions on real estate negotiations, on personnel matters and/or to receive advice of counsel on pending or potential litigation. Confidential memoranda related to these issues may be considered during such closed session discussions.*

**PUBLIC MEETING MINUTES**  
**BALDWIN HILLS CONSERVANCY**  
**Friday, March 23, 2018**

**10:00 a.m. Call to Order** - A public meeting of the Baldwin Hills Conservancy (BHC) was assembled at 10:00 a.m. on Friday, March 23, 2018, at the Kenneth Hahn State Recreation Area (KHSRA) Community Center located at 4100 South La Cienega Boulevard, Los Angeles, CA 90056.

**I. Roll Call - Avril LaBelle, Executive Secretary**

**Members Present:** Lloyd Dixon, Jacquelyn Dupont-Walker, Peter Garcia, Lacey Johnson, Robert Jones, Corey Lakin, Jason Marshall, Joshua Nelson, Patricia O'Toole, Starlett Quarles, Kevin Regan, Craig Sap, Ana Straabe,

**Staff Present:** David McNeill, Executive Officer; David Edsall, Deputy Attorney General (DAG) California Department of Justice; Gail Krippner, Grant Program Manager; Noa Rishe Khalili, Park and Recreation Specialist; Daniel Sciolini, Staff Services Analyst; Avril LaBelle, Executive Secretary.

*(Prior to roll call DAG David Edsall conducted the swearing in of new board member Corey Lakin, Director, Parks Recreation and Community Services, City of Culver City.)*

**II. Approval of Minutes (December) – Jacquelyn Dupont-Walker, Chair**

*There being no objects or questions the Chair called for a motion to approve; Member Johnson so moved, Member Quarles seconded the motion, and the minutes were approved.*

**III. Public Comments – Jacquelyn Dupont-Walker, Chair**

*Public comment was invited. Mr. McNeill, Executive Officer, Baldwin Hills Conservancy provided comment on the passing of Mim Shapiro. "Mim was a longtime fixture at meetings over the life of the BHC; always on point in terms of activism for the Baldwin Hills and for her community; instrumental in working toward establishing the Baldwin Hills Scenic Overlook; an artist; a Ballona Renaissance Board Member; assisted in activities to include the integration of the Blair Hills. She will be missed."*

**IV. Presentation on the 2018 Culver City Bicycle & Pedestrian Master Plan Update – Helen Chin, Management Analyst, Culver City Public Works**

Presenters Helen Chin and Mark Caswell provided an update to the Bike and Pedestrian Plan of 2010. Covering the action plan to improve opportunities to travel on foot and by bicycle; improve safety for all modes of transportation; and maintain the quality of life communities enjoy. (This plan is regarding the streets outside of KHSRA.) Visit [culvercity.bikepedplan.com](http://culvercity.bikepedplan.com) - There is a quick 20 question survey both in English and in Spanish; publications and workshop information; opportunity for the public to complete an interactive map, click points, add routes, read comments made by others; and information to attend an open house, and get involved. A rideshare plan with Metro may be implemented in the Fall. *(See attached presentation handout "Culver City Bicycle & Pedestrian Action Plan" Community Stakeholders)*

**V. Presentation on Proposed Countywide Public Safety Voice Network Installation at Kenneth Hahn State Recreation Area - Los Angeles Regional Interoperable Communication System (LA-RICS) Project Team**

Information presented covered: The needed replacement of an (*antiquated*) L.A. County Region Communications System for Public Safety: LA-RICS is designed to Public Safety Grade standards, and will provide reliability, wide coverage, seamless interoperability, and adherence to all federal guidelines; [www.la-rics.org](http://www.la-rics.org) (See attached memorandum dated March 23, 2018, Item 5: Presentation on Proposed Countywide Public Safety Voice Network Installation at Kenneth Hahn State Recreation Area - Los Angeles Regional Interoperable Communication System (LA-RICS) Project Team;)

**VI. Update on the South Los Angeles Urban Greening Project – Sadio Woods, Project Coordinator, Community Health Councils**

Aaron Thomas, North East Trees - Community Health Councils has partnered with North East Trees on the South LA Urban Greening Project, featuring installation of some 3,500 trees in and around the Baldwin Hills – Crenshaw areas, and is hiring individuals from the community. Approximately: 2,000 native oak seedlings will be planted inside the open space areas of the Baldwin Hills – Stocker Corridor, KHSRA, and potentially the area connecting KHSRA to the Scenic Overlook/Park to Playa Trail, and Scenic Overlook itself; 500 (mostly drought tolerant) street trees planted in the parkways in Baldwin Village; 1,000 trees on neighborhood private properties through distribution events, and tree giveaway events. Tree distribution is taking place at local venues including the Crenshaw Farmers Market. Residents living in the City of L.A. within the geographic area of the 10 Freeway to the North, Baldwin Hills to the South, La Brea to the West, and Crenshaw to the East can order trees online. A grant through CalFire allows for 3-year tree maintenance (*not including trees on private property;*) There is funding in this project to provide workshops to teach the community the importance of how to care for their trees so that the properties owners can maintain their own trees. Trees capture Greenhouse Gases, provide erosion control, capture Stormwater, provide wildlife habitat, and shade for energy conservation. This is a win for the community. (For additional information see attached memorandum dated March 23, 2018, Item 6: Update on the South Los Angeles Urban Greening Project – Community Health Councils - Sadio Woods, Project Coordinator; and handout “Urban Greening in South Los Angeles.”)

**VII. Executive Officer Report: Legislative, Project Status, and Fiscal updates – BHC Staff Representatives**

**Fiscal Update – David McNeill**

(See attached memorandum dated March 23, 2018, Item 7: Executive Officer Report; Attachment #1 – BHC Local Assistance/Capital Outlay Projects Status Report; Attachment #2 – Baldwin Hills Summary Expenditure Sheet by Fund; and Attachment #3 – Baldwin Hills Prop 40 and Prop 84 Bond Cash Funds;)

**Legislative Update – David McNeill**

The County is conducting meetings with the Los Angeles County Safe, Clean, Water Program Committee regarding developing a measure that would propose a parcel tax and expenditure plan to implement Stormwater projects that are consistent with the goals listed in the Authorizing Act and the County Water Resilience Plan. (See attached memorandum dated March 23, 2018, Item 7: Executive Officer Report; Attachment #1 – BHC Local Assistance/Capital Outlay Projects Status Report;)

**Project Status Update**

**Proposition 40 – Gail Krippner**

**Healthy Living Parklands Initiative with the City Project** – The City Project is working on a baseline report and work plan on how to rollout this health initiative, establish a baseline, identify who the healthcare providers are in the Baldwin Hills, what kind of recreational resources and existing recreation programs in the area. A stakeholders meeting is expected in April.

**Martin Luther King Jr. Tree Grove** - Made possible through the County of L.A., Parks and Recreation Grant, the Tree Grove will open to the public in KHSRA at 10:00 a.m. Saturday, March 31<sup>st</sup>. There is beautiful tree grove, an obelisk, and boulders engraved with quotes.

**La Cienega Pedestrian Bridge Project** – This is the bridge over La Cienega going from KHSRA to Stoneview Nature Center – No agreement as of yet; however, there is successful bidder currently being evaluated. If the bidder passes the screening process their bid will go to the board of supervisors in June.

**Proposition 84 – Noa Rishe Khalili**

**Trail and Stormwater Improvement Project** – Construction begins May 1<sup>st</sup>, preparing and creating sustainable trails throughout the Scenic Overlook; making changes to the stairs to make them more sustainable; improving the structure; and augmenting new plantings;

**LA Audubon Society** – Is continuing with the Baldwin Hills Parklands Conservation Project; there is a current session of West LA College students participating in the conservation certificate program. They have been drawing area topography maps. David McNeill is in talks with West LA College staff to try and better integrate this program into West LA College so that students will receive core credit. Next week is the Spring Camp.

**Ballona Creek Connection with the City of Culver City** – Construction is set to begin in April. There were some delays due to weather and in securing a contract.

**Dog Path in Culver City Park** – The Pooch Path was discussed at the Culver City Council Community Meeting. This dog path is part of having the Park to Playa trail be a place where one can walk their dog continuously throughout the 13 miles.

**Proposition 1 – Daniel Sciolini**

**Culver City Refuse Transfer Station - Stormwater Diversion Project (Phase 1)** –

Has been completed. A walk-through is to be conducted. **Rain Garden (Phase 2)** – Is underway. The contractor removed the top nine inches of soil the week of March 12<sup>th</sup>, and begin backfilling nine inches of topsoil; planting is set to begin on March 26<sup>th</sup>. Installation of the cistern and Biofiltration device is anticipated to start mid-April; interpretive signage has been completed; project completion expected July 2018.

**Milton Green Street** – The Green Street is now open to the public. Congratulations to all partners, to the MRCA and Ana Straab for a job well done. A final walk-through is planned for mid-April.

**Lower Ballona Creek Feasibility Plan/Study** – Project kickoff began late January; survey and base-mapping began in March; the first stakeholder meeting is set to take place the end of March; Geo-Technical investigation and soil analysis is anticipated at the end of March after the survey; project completion is on track for December 2018.

**Proposition 1** – It is Earth Month and the Conservancy is participating in Grand Park Earth Day; LA County Sanitation Earth Day, and Inglewood Earth Day. Other Prop 1 events include:

- A Workshop at the LAD River Center and Gardens at 10:00 a.m. on April 18<sup>th</sup>;
- Stormwater Management Project – Yvonne B. Burke Sports Complex
  - Addressing Stormwater/irrigation runoff, swales, a pedestrian bridge, switch back connection point to the Wateridge Property
  - Application is anticipated at the end of third round of solicitation on March 31<sup>st</sup>.
- A conference call with LA San Watershed Protection Division was held to identify potential project sites, and discuss next steps.

**VIII. Board Member Announcements or Proposed Agenda Items for Future Meetings**

- Martin Luther King Jr. Memorial Tree Grove Dedication Ceremony - 10:00 a.m., Saturday, March 31<sup>st</sup> at the KHSRA.
- *The BHC welcomes and congratulates new Board Member Corey Nelson.*
- *The next board meeting is tentatively scheduled for **May 18, 2018.***



## **ADJOURNMENT**

There being no more business brought before the board, the meeting was adjourned at approximately **12:00 p.m.**

Approved:

---

Jacquelyn Dupont-Walker, Chair

Date:

# BALDWIN HILLS CONSERVANCY

5120 West Goldleaf Circle, Suite 290  
Los Angeles, CA 90056  
Phone: (323) 290-5270  
www.bhc.ca.gov

---

## Memorandum

**To:** Governing Board

**From:** Daniel Sciolini, Staff Services Analyst

**Date:** May 18, 2018

**Re:** Item #4: Consideration of a Resolution Authorizing a Proposition 1 Local Assistance Grant in an Amount Not to Exceed \$1,500,000 to the California Conservation Corps Foundation (CCCF) for the Stormwater Management Project at the Yvonne Brathwaite Burke Sports Complex.

**Recommendation:** Approve Resolution 18-01, authorizing a grant of up to \$1,500,000 in BHC Proposition 1 Funds to the CCCF for the Stormwater Management Project at the Yvonne Brathwaite Burke Sports Complex.

### **Background:**

The CCCF has applied for Prop 1 grant funds to develop and implement the Stormwater Management Project for Yvonne Brathwaite Burke Sports Complex (See Attachment #1.) The proposed project will address the need to manage site runoff, reduce erosion, stabilize the slope, and create opportunities for captured stormwater to recharge the local groundwater basin. The project is designed to retain peak flows using natural treatment systems to reduce dry-weather, stormwater, and irrigation runoff including total suspended solids, thus improving the quality of water flowing into the Ballona Creek. The project will enhance the park to reduce flows off-site, improve habitat, reduce slope erosion, and develop new interpretive features.

The proposal includes seven (7) project elements:

1. Conducting a geotechnical study, developing a topographic and boundary survey, and identifying the permeable layer below the impermeable topsoil. Design of dry-well system will result in the ability to filter water into the ground at a desirable rate.
2. Installing a bio-retention basin (with maintenance ramp,) a pedestrian trail with a wooden guardrail enclosing the basin, and native shrub habitat to assist with diversification of the wildlife corridor.
3. Installing underground interception conduits redirecting existing nuisance flows from three (3) strategic locations in the park, to the bio-retention basin, resulting in the capture of up to 4.3-acre feet of water annually.

4. Constructing a pedestrian access connecting the Sports Complex to the abutting office complex and busy shopping center, providing safe access to/from the South.
5. Developing and executing a Public Participation Plan with Los Angeles County Department of Parks and Recreation (LACDPR). Staff will engage public, raise awareness, promote stakeholder participation, and identify the need to continue conservation efforts.
6. Creating a Monitoring and Reporting Plan (MRP) that will measure the performance of the retention basin in capturing pollutants and retaining flows. Confirming effectiveness of water conservation and health of vegetation. Upon LACDPR approval of the MRP, LACDPR will manage and maintain all project elements.
7. Installing vandal-proof interpretive display(s) that will describe the watershed and relevant project sites, including descriptions of the native plants and wildlife associated with the habitat.

Pursuant to the BHC Prop 1 Guidelines, the proposal passed all screening requirements. The application met all the qualifications and scored highest in the following three (3) areas: 1) The extent to which the project achieves and demonstrates the purposes of Chapter 6 Prop 1; 2) The extent to which the project will deliver sustainable outcomes in the long-term; 3) The extent to which the project provides multiple benefits. It is also consistent with various State plans, including the Governor's Water Action Plan, California Wildlife Action Plan, Integrated Regional Water Management (IRWM) Plan, and the Baldwin Hills Master Plan. The final average score of the evaluation was 80 out of 100 possible points. Scoring sheets and evaluations will remain on file.

If the proposal is approved, the result will be a more sustainable Sports Complex, diverting and reusing stormwater, irrigation, and dry-weather runoff, on-site. The Sports Complex covers an area of approximately 20 acres, with 14 acres contributing to runoff flows needing alternative methods of management. The drywell system will allow impounded water to percolate into the ground recharging the groundwater basin. Controlling approximately 70% of the entire Sports Complex's run off would improve the water quality downstream in the wetlands and the Santa Monica Bay. The interpretive element will benefit the community by demonstrating steps being taken locally to capture and reuse runoff onsite.

**Stormwater Management Project for Yvonne Brathwaite Burke Sports Complex  
California Conservation Corps Foundation**

**PROP 1 LOCAL ASSISTANCE GRANT PROJECT REQUIREMENTS**

(For use in the determination of the priority of Conservancy grants and projects authorized under Division 22.7 of the California Public Resources Code)

**STANDARD REQUIREMENTS**

**a. Located within the BHC territory**

Site map and narrative identify project is within the Conservancy territory and boundaries as described in PRC 32553 (a).

**b. Promotion of the Conservancy's statutory programs and purposes**

*PRC 32555 (a)* The Conservancy shall provide recreational, open space, wildlife habitat restoration and protection, and lands for educational uses within the area.

*PRC 32555 (c)* The Conservancy shall provide for the public's enjoyment, and enhance the recreational and educational experience on public lands in the territory in a manner consistent with the protection of lands and resources in the area.

*PRC 32565.5 (a)* The Conservancy shall develop and coordinate an integrated program of resource stewardship so that the entire Baldwin Hills area is managed for optimum recreational and natural resource values based upon the needs and desires of the surrounding community.

*PRC 32565.5 (b)* The Conservancy shall establish policies and priorities within the Baldwin Hills area, and conduct any necessary planning activities in accordance with the purposes set forth in Section 32555.

*PRC 32565.5 (c)* The Conservancy shall give priority to related projects that create expanded opportunities that provide recreation, aesthetic improvement, and wildlife habitat in the Baldwin Hills area.

**c. Consistency with the Baldwin Hills Park Master Plan**

*Hydrology, Page 13-14, BHPMP:* The Baldwin Hills are the last large, undeveloped open space in the urban portion of the 127 square-mile Ballona Creek Watershed. The hills drain into both Ballona Creek and its tributary Centinela Creek, through the Ballona Wetlands and then into Santa Monica Bay. The quality of water flowing from the Baldwin Hills is important to water quality in Ballona Creek, the Ballona Wetlands and in Santa Monica Bay.

*Natural Habitat, Page 43, BHPMP:* Opportunities exist to create connections and produce much larger habitat areas, protect populations of native plants and animals unique to Southern California, establish large natural preserve areas, increase the diversity of plant and animal communities and preserve the overall environmental health of the region.

*Park Concept Description: One Big Park, Page 51, BHPMP:* Storm water on the site will be collected and treated to reduce potential pollutants from flowing into Ballona Creek. Storm water will also be collected as an irrigation source for high water use areas. Substantial areas of the site will be revegetated with drought tolerant native plant species.

*Education and Interpretation, Page 76, BHPMP:* Providing opportunities for outdoor education and use of the Baldwin Hills Park as a living laboratory is a primary management goal.

**d. Consistency with purposes of Prop 1 Statute**

WC 79732 (a): In protecting and restoring California rivers, lakes, streams, and watersheds, the purposes of this chapter are to: (2) Implement watershed adaptation projects in order to reduce the impacts of climate change on California's communities and ecosystems; (9) Protect and restore rural and urban watershed health, to improve watershed storage capacity, forest health, protection of life and property, stormwater resource management, and greenhouse gas reduction. (11) Reduce pollution or contamination of rivers, lakes, streams, or coastal waters, prevent and remediate mercury contamination from legacy mines, and protect or restore natural system functions that contribute to water supply, water quality, or flood management. (12) Assist in the recovery of endangered, threatened, or migratory species by improving watershed health, instream flows, fish passage, coastal or inland wetland restoration, or other means, such as natural community conservation plan and habitat conservation plan implementation.

**e. Support from the public (demonstrate)**

*(See attachments #2 and #4)*

**f. Greater-than-local interest**

With nearly 3 million Californians residing in a five-mile radius of the Baldwin Hills territory (according to the 2000 census data), and over 58 million trip visits to the Los Angeles area annually by Californians alone; the land resources in the Baldwin Hills represent an extraordinarily unique value to the entire state. This project promotes and implements California's watershed conservation policies in one of the most densely populated areas of the country.

**g. Demonstrated expertise in the proposed program area**

CCCCF has over 30 years of experience implementing infrastructure projects contributing to water quality protection, water conservation, habitat restoration, and urban greening. They have partnered with California Conservation Corps on various projects and events, and have established partnerships with local government agencies and corporations for support and funding. Local government agencies include the LACDPR, and the Los Angeles Department of Water and Power (LADWP.) Additionally, their partnerships with DakeLuna Consultants Landscape Architects, and the civil engineering firm MNS Engineers, will provide professional expertise and services including geotechnical engineering, and landscape design and improvements.

## BALDWIN HILLS CONSERVANCY (BHC)

### RESOLUTION 18-01

RESOLUTION AUTHORIZING A PROPOSITION 1 GRANT IN AN AMOUNT NOT TO EXCEED \$1,500,000 TO THE CALIFORNIA CONSERVATION CORPS FOUNDATION (CCCF) FOR THE STORMWATER MANAGEMENT PROJECT AT THE YVONNE BRATHWAITE BURKE SPORTS COMPLEX.

WHEREAS, the BHC was created to acquire open space and manage public lands within the Baldwin Hills area and to provide recreation, restoration and protection of wildlife habitat within the Conservancy territory; and

WHEREAS, pursuant to Public Resources Code Section PRC 32555 (c) The Conservancy shall provide for the public's enjoyment, and enhance the recreational and educational experience on public lands in the territory in a manner consistent with the protection of lands and resources in the area; and

WHEREAS, pursuant to Public Resources Code Section PRC 32565.5 (a) The Conservancy shall develop and coordinate an integrated program of resource stewardship so that the entire Baldwin Hills area is managed for optimum recreational and natural resource values based upon the needs and desires of the surrounding community; and

WHEREAS, the BHC has the authority, pursuant to Public Resources Code Section 32569 (a), to make grants to non-profit 501c (3) organizations to further the purposes of the Conservancy; and

WHEREAS, CCCF is a non-profit 501c (3) organization with experience in project coordination on behalf of the California Conservation Corps; and

WHEREAS, CCCF has submitted an application for a BHC Proposition 1 local assistance grant for the STORMWATER MANAGEMENT PROJECT AT THE YVONNE BRATHWAITE BURKE SPORTS COMPLEX consistent with the funding source and grant requirements adopted by the BHC under Resolution 18-01; and

WHEREAS, pursuant to Water Code 79732, funds from the Water Quality, Supply and Infrastructure Improvement Act of 2014 are available to reduce pollution or contamination of rivers, lakes, streams, or coastal waters, and protect or restore natural system functions that contribute to water supply, water quality, or flood management.

NOW THEREFORE, BE IT RESOLVED, THE BHC GOVERNING BOARD:

1. AUTHORIZES A GRANT IN AN AMOUNT NOT TO EXCEED \$1,500,000 OF BHC PROPOSITION 1 FUNDS TO THE CALIFORNIA CONSERVATION CORPS FOUNDATION FOR THE DEVELOPMENT AND IMPLEMENTATION OF A STORMWATER MANAGEMENT PROJECT WITHIN THE BALLONA WATERSHED.

2. ADOPTS THE STAFF REPORT AND RECOMMENDATIONS DATED MAY 18, 2018 FOR THIS ITEM.
3. APPOINTS THE EXECUTIVE OFFICER, AS AGENT TO CONDUCT ALL NEGOTIATIONS, EXECUTE AND SUBMIT ALL DOCUMENTS INCLUDING, BUT NOT LIMITED TO AGREEMENTS, PAYMENT REQUESTS, AND CERTIFICATIONS WHICH MAY BE NECESSARY FOR THE COMPLETION OF THE AFOREMENTIONED PROJECT(S).

Passed and Adopted by the Board of the  
BALDWIN HILLS CONSERVANCY

on \_\_\_\_\_, 2018.

\_\_\_\_\_  
Jacquelyn Dupont-Walker  
Chair

ATTEST: \_\_\_\_\_

David Edsall  
Deputy Attorney General



### **ADDITIONAL PRIORITIES**

**a. Urgency**

Existing conditions are noticeable, and will continue without the proposed improvements. Preserving the long-term maintainability and functionality of the facility, reducing pollutant discharges to Ballona Creek, enhancing water conservation, and creating an aesthetically pleasing educational space for the surrounding community is essential. Efficiently and effectively managing the seventy (70%) percent of the Sports Complex area contributing to these nuisance flows is essential in conserving our local water resources.

**b. Resolution of more than one issue (Multi-Benefit Project)**

The proposed project will manage site runoff, stop erosion and stabilize the slope along the south facing hill separating the upper and lower terrace of the ballfields, while creating opportunities for captured stormwater to recharge the local groundwater basin and improve water quality in Ballona Creek. A new trail, and pedestrian access point, park benches, interpretive signage. (See *Attachments #6, #7A, #7B, and #8*).

**c. Readiness**

The CCCF staff is positioned to start the project in a timely manner (See *Attachment #1, Preliminary Budget and Schedule, p. 5.*) The project activities, specifically planning to include engineering and design work, are ready to begin immediately. An aggressive timeline has been projected for the schedule, with an estimated date of completion within one (1) year.

**d. Cooperation**

The CCCF has support from the LACDPR who will assist in obtaining the necessary permits, including maintaining the project upon successful completion; and from the California Conservation Corps who will provide labor and other support to the contractors. (See *Attachments #2, and #4*).



## Prop 1 GRANT APPLICATION

## CONTACT INFO

<b>Organization</b>	CCC Foundation		
<b>Contact Person</b>	Adam Somers	<b>Email</b>	adam@cccfoundation.net
<b>Phone</b>	310.560.4840	<b>Fax</b>	N/A
<b>Address</b>	921 11 <sup>th</sup> St., Suite 1100, Sacramento, CA 95814		

## PROJECT INFO

<b>Project Name</b>	Stormwater Management Project for Yvonne Brathwaite Burke Sports Complex		
<b>Summary</b>	Development of stormwater interception conduits to retention basin and drywells recharging 3.2-4.3 AcreFeet of water on average annually, improvement of eroding slopes with drought tolerant plantings, and installation of interpretive program focusing on watershed.		
<b>Total Project Cost</b>	\$1,500,000	<b>Amount Requested</b>	\$1,500,000
<b>Start Date</b>	June 1, 2018	<b>End Date</b>	June 1, 2019
<b>Project Type</b> (check all that apply)	<input checked="" type="checkbox"/> Planning <input type="checkbox"/> Acquisition <input checked="" type="checkbox"/> Resource Protection <input type="checkbox"/> Access <input type="checkbox"/> Climate Change <input type="checkbox"/> Habitat Conservation/Restoration <input checked="" type="checkbox"/> Urban Greening		
<b>Acres</b> 2.0		<b>Trail Miles</b>	<b>APNs</b> (Acquisition Only)

## LOCATION INFO

<b>County</b>	Los Angeles	<b>Specific Location</b>	5409 S. Fairfax Ave, Los Angeles
<b>Latitude</b>	33°59'27" N	<b>Longitude</b>	118°21'57" W
<i>What point is represented by the lat/longs (e.g., parking lot, center of site, etc):</i>	Center of proposed retention basin located between west baseball field and center baseball field		

## ELECTED OFFICIALS

<b>Districts</b>	<b>Number(s)</b>	<b>Name(s)</b>
State Senate	30	Holly Mitchell
State Assembly	54	Sebastian Ridley-Thomas
Congressional	37	Karen Bass

## GRANT APPLICATION – PROJECT DESCRIPTION

Complete each of the elements of the project description below with clear, but detailed answers. Limit your response to Questions 1-7 should not exceed four pages. All applications must be provided in 12 point type.

1. **Need for the project.** Describe the specific problems, issues, or un-served needs the project will address.

The project was conceived out of concern for what has been observed as extraordinary flows of site runoff on to the adjacent parcel and along slopes that could be subject to erosion. The project site at the Yvonne Brathwaite Burke Sports Complex was developed as an outdoor facility and graded to accommodate three baseball fields, two soccer fields, and three parking lots covering an area of approximately 20 acres. Of this total area, approximately 14 acres contributes to runoff flows needing some form of management. Los Angeles County Parks staff have long-observed flows of water from the park into Fairfax Ave or following the natural drainage onto the neighboring property, and in 2016-17 invested significant effort in reducing these flows. Irrigation audits have been conducted, timer adjustments have been made, overspray and misting reduced, soil moisture has been monitored carefully, the system is regularly tested for leaks and these activities have resulted in a reduction in the nuisance flows while still delivering high-quality playfield turf to the public. However, minor intermittent flows persist due to the exposed hilltop location and the clay soil condition that have frustrated grounds managers' efforts to achieve good coverage without any wasted water.

A south-facing hillside separating an upper terrace of ballfields from the lower terrace has eroded continuously and sheet flows across these ball fields and slopes entrain sediments that then enter the County stormwater system. The project would stabilize the slope, reduce the erosion, and reduce sediment loading to the stormwater system.

Capturing these small flows into a drywell system designed after careful geotechnical study will return the water to the groundwater basin where it can be a contributor to sustainable local water supplies.

2. **Goals and objectives.** The goals and objectives should clearly define the expected outcomes and benefits of the project.

The proposed project will address the need to manage site runoff, stop the erosion, stabilize the slope, and create opportunities for captured stormwater to recharge the local groundwater basin. Through retention of peak flows and use of natural treatment systems, the project will reduce dry-weather and stormwater runoff and total suspended solids thus improving the quality of water flowing into Ballona Creek.

The 20 acres of Yvonne Brathwaite Burke Sports Complex include three baseball fields and two soccer fields of Bermuda turf irrigated with potable water obtained from California American Water Company. Capturing these small flows into a drywell system designed after careful geotechnical study will return the water to the groundwater basin where it can be a contributor to sustainable local water supplies.

The project will create a patch of shrub habitat useful for improving the diversity of plants and animals adjacent to the Inglewood Oil Field so that the patch is connected to other patches. The shrub habitat will include various California sage, buckwheat, bush sunflower, goldenbush, ceanothus, and various sage species with an understory of foothill and nodding needle grasses. Wildlife that might find these plantings useful includes, various sparrows, wrens, kingbirds, hummingbirds, and towhees.

The project will improve pedestrian access to the park from the south. Develop a pedestrian entrance to the busy shopping and office center abutting the southern edge of the park.

Promote better understanding of the watershed and factors impacting its health by installing a vandal proof display describing the watershed and how this location connects with it, and describing what plants and animals make up the habitat.

3. **Site Description.** Describe the project site or area, including site characteristics that are tied to your project objectives (i.e.: for acquisition of habitat, describe current vegetation assemblages, condition of habitats, known wildlife migration corridors, etc.). When relevant, include ownership and management information.

Yvonne Brathwaite Burke Sports Complex is a 20-acre park managed by the County of Los Angeles Department of Parks and Recreation and is bounded on the west and north by the 950 acre Inglewood Oil Field, by Fairfax Avenue on the east, and by offices and retail with parking to the south. The elevations range from 285' to 355' and it lies entirely within the watershed of Ballona Creek. The ballfields and parking areas are laid out efficiently, with a series of long, narrow interstitial slopes separating them. Rows of eucalyptus, pepper, and palm trees are distributed throughout and in general the park is designed for efficient management and to withstand heavy use. These twin features are expected to persist after the proposed project is installed, therefore, careful attention is paid to design improvements that do not burden the LA County Parks and Recreation Department's maintenance capability.

On the park's western edge, on the Inglewood Oil Field, abundant exotic plant species, a grove of Sycamores, and Coyote Bush Scrub are observable. This large oil field is a single use site with restricted access and it is highly disturbed.

Stormwater flow off the site onto the Inglewood oil field is managed by the drainage improvements installed there. Stormwater flow onto Fairfax Avenue likely contributes pollutants of concern to Ballona Creek via Centinella Creek.

A search of records yielded evidence that in a nearby location a layer of permeable soils set below the impermeable layer exists and this condition might be present beneath the project site. The preferred design of a bio-retention basin would connect to this permeable layer and conduct impounded water underground at a desirable rate.

4. **Specific Tasks.** Identify the specific tasks that will be undertaken and the work that will be accomplished for each task.

#	Task Name	Description
1	Administration, pre-design and planning	Develop and manage budget and schedule. Develop systematic capacity to perform grant administration, maintain project records, coordinate design team, and manage construction. Contract with consultant team including Surveyor, Civil and Geotechnical Engineers, Landscape Architect, Graphic Designer and Environmental Consultant. Obtain appropriate CEQA review. Provide on-site oversight of the contractor's activities in accordance with project plan, specifications, schedule, and budget. The Construction Manager will organize periodic reviews leading to final acceptance of improvements by County of LA. Finalize specific commitments for Monitoring and Reporting.
2	Site survey	Develop a topographic and boundary survey to support design phase.

3	Public Participation	Develop a plan with LA County staff to seek input from park users and interested parties, and to inform them of the project's progress. Execute the Public Participation Plan.
4	Design and Engineering	Contract with design and engineering consultants. Administer the scope of services in an orderly progress of design work through phases, resulting in complete construction documents. Design contracts shall include construction observation, responses to RFI's, testing, and project close-out activities.
5	Permitting & Monitoring Plan	Obtain permits for construction. Insure that appropriate party, such as LA County departments, conduct evaluation of the stormwater management features.
6	Construction	Conduct construction: a licensed and bonded general contractor will carry out the physical construction and improvements according to the project plans and specifications on schedule and within budget. Administer Maintenance and Guarantee periods as provided by the Specifications. Organize periodic reviews leading to final acceptance of improvements by County of LA.

The tasks above will be carried out under the leadership of CCCF, with design team including DakeLuna Consultants Landscape Architects, the civil engineering firm MNS Engineers and other professional services firms (to be determined) in the aforementioned areas of required expertise, and licensed contractors.

5. **Work Products.** List the specific work products or other deliverables that the project will result in.

Improvement of approximately 2 acres of the park to reduce dry-weather flows off-site, improve habitat, reduce slope erosion, and develop new interpretive features.

6. **Measuring Success.** For projects involving restoration, construction or land acquisition, describe the plan for monitoring, evaluating and reporting project effectiveness, and implementing adaptive management strategies if necessary. Who will be responsible for funding and implementing ongoing management and monitoring?

A Monitoring and Reporting Plan (MRP) will be created during the engineering design process to measure the performance of the retention basin in reducing suspended solids and other pollutants that may be identified. The monitoring will confirm the effectiveness of the retention basin, water conservation features, and plant health. Once accepted by LA County Parks and Recreation as complete, LA County Parks and Recreation will manage and maintain the project elements including retention basin, plantings, and interpretive display.

7. **Project Maps and Graphics.** Provide the following project graphics with your application. Project maps and design plans should be combined into one pdf file with a maximum size of 5 MB. Project photos should be provided in jpg format.

- Regional Map – Clearly identify the project's location in relation to prominent area features and significant natural and recreational resources, including regional trails and protected lands.
- Site-scale map – Show the location of project elements in relation to natural and man-made features on-site or nearby. Any key features discussed in project description should be shown.

- Design Plan – Construction projects should include one or more design drawings or graphics indicating the intended site improvements.
- Site Photos – One or more clear photos of the project site.

#### **GRANT APPLICATION – PRELIMINARY BUDGET AND SCHEDULE**

In the budget matrix below, relist the tasks identified in #4 above and for each provide: 1) the estimated completion date for the task, 2) the estimated cost of the task, and 3) the funding sources (applicant, Conservancy, and other) for the task. The table will automatically sum the totals for each row and column. To do this, highlight the whole table and hit F9.

<b>Task Number</b>	<b>Task</b>	<b>Completion Date</b>	<b>Applicant's Funding</b>	<b>Baldwin Hills Conservancy Funds</b>	<b>Other Funds</b>	<b>Total Cost</b>
1	Pre-design and planning	6/28/19		195,000		<b>\$ 195,000</b>
2	Site survey	9/28/18		15,000		<b>\$ 15,000</b>
3	Public participation	11/30/18		12,000		<b>\$ 12,000</b>
4	Design and Engineering	1/31/19		115,000		<b>\$ 115,000</b>
5	Permitting & monitoring plan	1/31/19		9,000		<b>\$ 9,000</b>
6	Construction	5/31/19		1,151,800		<b>\$ 1,151,800</b>
						<b>0</b>
<b>TOTAL</b>				<b>1,498,000</b>		<b>\$ 1,498,000</b>

#### **In Kind Services**

*In-kind services or contributions include volunteer time and materials, bargain sales, and land donations. Describe and estimate the value of expected in-kind services.*

## GRANT APPLICATION – ADDITIONAL INFORMATION

Provide clear, concise answer to each question below. Unless otherwise specified, please limit your answer to one concise paragraph. See grant application instructions for more information. For question #4, limit your answer to 1-3 sentences per relevant plan. Most questions should be answered by all applicants, enter “not applicable” if a question does not pertain to your project.

**1. Proposition 1 Goals.** Which of the following purposes of Chapter 6 of Proposition 1 are achieved by the project (check all that apply):

- ☐ Protect and increase the economic benefits arising from healthy watersheds, fishery resources and in-stream flow
- ☒ Implement watershed adaptation projects for which Grantee has consulted with the state and local conservation corps and included their services if feasible (for restoration and ecosystem protection projects only). Grantees must submit a completed Corps Consultation Review Document. The process for obtaining this required consultation is described in Appendix D.
- ☐ Restore river parkways throughout the state, including but not limited to projects pursuant to the California River Parkway Act of 2004 and urban river greenways.
- ☐ Protect and restore aquatic, wetland and migratory bird ecosystems including fish and wildlife corridors and the acquisition of water rights for in-stream flow.
- ☐ Fulfill the obligations of the state of California in complying with the terms of multiparty settlement agreements related to water resources.
- ☐ Remove barriers to fish passage.
- ☐ Collaborate with federal agencies in the protection of fish native to California and wetlands in the central valley of California.
- ☐ Implement fuel treatment projects to reduce wildfire risks, protect watersheds tributary to water storage facilities and promote watershed health.
- ☐ ☒ Protect and restore rural and urban watershed health to improve watershed storage capacity, forest health, protection of life and property, storm water resource management, and greenhouse gas reduction.
- ☐ ☒ Protect and restore coastal watersheds including but not limited to, bays, marine estuaries, and near shore ecosystems.
- ☐ ☒ Reduce pollution or contamination of rivers, lakes, streams, or coastal waters, prevent and remediate mercury contamination from legacy mines, and protect or restore natural system functions that contribute to water supply, water quality, or flood management.
- ☐ Assist in the recovery of endangered, threatened, or migratory species by improving watershed health, in stream flows, fish passage, coastal or inland wetland restoration, or other means, such as natural community conservation plan and habitat conservation plan implementation.
- ☐ Assist in water-related agricultural sustainability projects.



2. **Conservation Corps.** For restoration and ecosystem protection projects, Grantee to include each signed and completed Corps Consultation Review Document as evidence that applicant has consulted with the state and local conservation corps and included their services if feasible. The process for obtaining this required consultation is described in Attachment 1 to this application.

California Conservation Corps Review Documents are attached

3. **Consistency with other State Plans:** If the proposed project will help to implement or promote the goals of any of the State Plans listed below, check that plan and specify which goals, objectives, priority actions, etc. will be furthered by the project. Limit your answers to 1-3 sentences per plan.

☒ California @ 50 Million: The Environmental Goals and Policy Report

The project includes replacement of turf with California friendly drought tolerant plants and reduction of soil erosion. The project reduces dry-weather stormwater flows and increases infiltration to groundwater. Plantings and soil improvements will be more complex and soil structure will be improved and made more complex.

☒ CA Climate Adaptation Strategy/Safeguarding California: Reducing Climate Risk Plan

The project's enhancement of local water supplies helps to reduce dependence on imported supplies which are projected to be impacted by reduced snowpack in source watersheds and by climate variability. The project includes replacement of turf with California friendly drought tolerant plants and reduction of soil erosion. The project reduces dry-weather stormwater flows and increases infiltration to groundwater. Plantings and soil improvements will be more complex and soil structure will be improved and made more complex.

☒ California Water Action Plan

The project is consistent with the California Water Action Plan's call for greater reliance on local water supplies and the acknowledgment of water conservation being a new way of life in California (see below).

☒ CA Wildlife Action Plan

One of the Conservation Action Categories of the State Wildlife Action Plan (SWAP) is Habitat Conservation and Restoration in which the SWAP describes an example action as "restoring groundwater levels to support riparian vegetation as well as protecting and restoring critical habitat linkages that assist wildlife movements or vegetation distribution shifts due to climate change." This project fulfills this conservation action by restoring groundwater levels and replacing turf with native vegetation that acts as a habitative link to surrounding open spaces.

☒ California Essential Habitat Connectivity Strategy for Conserving a Connected California

The project abuts the Inglewood Oil Field which is home to raptors and birds. Though large mammals are uncommon at this time it is a large landscape patch with limited public access and therefore has the potential to be valuable. The project includes plantings that connect to those on the adjacent oil field. The Wildlife Action Plan states: "A functional network of connected habitats is essential to the continued existence of California's diverse species and natural communities in the face of both human land use and climate change" (CA Dept of Fish and Wildlife).

☐ Habitat Conservation Plans/Natural Community Conservation Plans (specify the plan)

☒ Other relevant state or regional plan(s) (specify the plan, refer to Appendix C)

Baldwin Hills Park Master Plan (2002): identifies the need to connect wildlife habitat areas and highlights the importance of creating new habitat due to the currently degraded and fragmented conditions in and near the Baldwin Hills. The project will create new habitat for wildlife while also improving the current habitat conditions within Ballona Creek for marine life.

#### 4. California Water Action Plan.

- a. Identify which goals of the California Water Action plan the project will promote or implement.

Make conservation a California way of life: Project will demonstrate extensive plantings of California Friendly plantings and include interpretation of those plantings and their relationship to the watershed's health to promote California friendly plantings to the public.

Increase regional self-reliance and integrated water management across all levels of government: Project includes roles for LA County and the California Conservation Corps demonstrating inter-agency cooperation. The project intends both to improve the water quality in Ballona Creek by reducing pollutant loads, to create a native habitat patch, and to divert small amounts of stormwater to the groundwater: this is a multi-objective action.

Expand water storage capacity and improve groundwater management: The subject project is a distributed groundwater project and increases groundwater recharge by a small increment.

- b. Identify the Integrated Watershed Management Plan(s) and any other regional or watershed plans that apply to the specific project area. For each, list those goals, objectives, priority actions, etc. that the project will promote or implement.

The project is located within the Greater Los Angeles County (GLAC) Integrated Watershed Management Plan (IRWMP) Region. The updated 2014 GLAC IRWMP.....

".....identifies a comprehensive set of solutions to achieve the following objectives over the 25 year planning horizon: reduce the Region's reliance on imported water; comply with water quality regulations by improving the quality of urban runoff, stormwater and wastewater; protect, restore and enhance natural processes and habitats; increase watershed friendly recreational space for all communities; reduce flood risk in flood prone areas by either increasing protection or decreasing needs using integrated flood management approaches; and adapt to and mitigate against climate change vulnerabilities."

This project, in varying degrees, makes contributions to meeting the goals of the IRWMP in the areas of reduced reliance on imported water, water quality, habitat restoration, recreation enhancement, reduced flood risk, and climate change adaptation.

The subject project is located in the Ballona Creek Watershed and it implements the goals of the Ballona Creek Watershed Management Plan by diverting dry-weather run-off laden with sediment from the street where it previously flowed to Ballona Creek to instead be cleansed and infiltrated on-site.

5. **Best Scientific Practices.** Describe how the project is consistent with best scientific practices where achievable and appropriate.

The best available science is used in design of the retention basin and in the design of the planting areas for the benefit of wildlife. The design team includes experienced designers who regularly implement projects with habitat and stormwater capture goals.

6. **New Technology.** Does the project employ new or innovative technology or practices? If yes, describe those technologies and/or practices.

We do not anticipate employing new technology.

7. **Sustainability.** Described how the project will deliver sustainable outcomes in the long-term.

The subject project is fed by dry and wet weather run-off and collects, cleanses, and infiltrates that stormwater. Turf areas are replaced with California friendly drought-tolerant plantings that will foster a more complex soil structure and require no supplemental fertilization. The project includes an interpretive program that will describe how the improvements fit into the watershed and how the watershed functions.

8. **Project and Applicant History:** Provide a history of the project, and any background information not provided in the project description. Is the project related to any previous or proposed Baldwin Hills Conservancy projects? If so, which ones and how are they related?

We are not aware of any related Baldwin Hills Conservancy Project.

9. **Environmental Review:** Projects funded by the Coastal Conservancy must be reviewed in accordance with the California Environmental Quality Act ("CEQA"). CEQA does not apply to projects that will not have either a direct or indirect effect on the environment. For all other projects, if the project is statutorily or categorically exempt under CEQA, no further review is necessary. If the proposed project is not exempt, it must be evaluated by a public agency that is issuing a permit, providing funding, or approving the project, to determine whether the activities may have a significant effect on the environment. The evaluation results in a "Negative Declaration (Neg. Dec)," "Mitigated Negative Declaration (MND)," or "Environmental Impact Report."

The proposed project.... (select the appropriate answer):

☐ Is not a project under CEQA. Briefly specify why.

☒ Is exempt under CEQA. Provide the CEQA exemption number and specify how the project meets the terms of the exemption.

The project is to be authorized within the usual ministerial duties of the LA County Parks and Recreation Department and it is expected that their review will find this project to be exempt from further environmental review requirements of CEQA as defined by the State and County Guidelines for the implementation of CEQA under CEQA Guidelines Section 15304.

Reasons to support exemption findings: CEQA Guidelines Section 15304 lists grading on land with a slope of less than 10 %, provided that such activity is not in any wetland, scenic area, or mapped severe geologic hazard area, as an example of activities to which this exemption would apply. Also listed in this section are new gardening or landscaping.

There is no evidence that the proposed project involves unusual circumstances, including future activities, resulting in or which might reasonably result in significant impacts which threaten the environment.

☐ Requires Negative Declaration, MND, or EIR. Specify the lead CEQA agency (the agency preparing the document) and the (expected) completion date. Please note that the Conservancy will need to review and approve any CEQA document, and cannot present a project to the Conservancy Board for funding consideration without a completed CEQA document. For more information on CEQA, visit: [http://ceres.ca.gov/topic/env\\_law/ceqa/flowchart/index.html](http://ceres.ca.gov/topic/env_law/ceqa/flowchart/index.html).

- 10. Support:** List the public agencies, non-profit organizations, elected officials, and other entities and individuals that support the project.

LA Dept. of Water & Power  
California Conservation Corps

- 11. Regional Significance:** Describe the regional significance of the project with respect to recreation (regional trails and parks, staging areas, environmental education facilities, etc.), agricultural resources, and natural resources (including listed species, identified high priority habitat, wildlife corridors, watersheds, and agricultural soils).

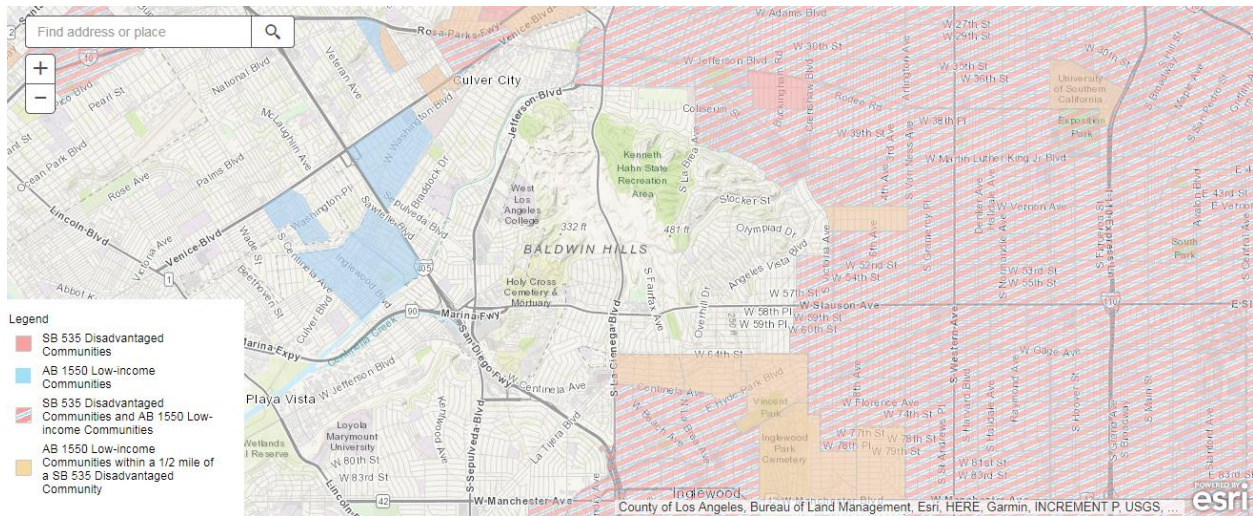
The project implements the Baldwin Hills Park Master Plan (2002): identifies the need to connect wildlife habitat areas and highlights the importance of creating new habitat due to the currently degraded and fragmented conditions in and near the Baldwin Hills. The project will employ water conservation measures to improve the quality of water and reduce the pollutants within Ballona Creek.

In accordance with the 2016 Los Angeles Countywide Comprehensive Parks & Recreation Needs Assessment, this project provides functional and educational improvements to a regional park that serves nearby communities that themselves are identified as being in need of more parks and parks services.

- 12. Disadvantaged Communities.** Does the project benefit a disadvantaged community? Proposition 1 defines a disadvantaged community as “a community with an annual median household income that is less than 80 percent of the statewide annual median household income.” (CA Water Code Section 79505.5.) The Department of Water Resources has developed an online [map viewer](#) which shows the maps of California’s disadvantaged communities, based on census data including the American Community Survey. Communities are defined at different geographic scales, including county, census tract and census place.

If yes, specify which community and how it will be benefited by the project.

The project serves a regional constituency of SB 535 and AB 1550 disadvantaged communities as identified by CalEnviroScreen 3.0 within a radius of 2 miles or less to the north, south, and east from the project site (see image below from CalEnviroScreen 3.0).



**13. Need for Conservancy Funds:** What would happen to the project if no funds were available from the Conservancy? What project opportunities or benefits could be lost and why if the project is not implemented in the near future?

If the Project is not funded, CCCF would not be able to construct the improvements. The opportunity to preserve the long-term maintainability and functionality of the facility, reduce pollutant discharges to Ballona Creek, enhance water conservation, and create an aesthetically pleasing educational opportunity for surrounding communities would be lost and existing conditions would persist.

**14. Vulnerability from Climate Change Impacts Other than Sea Level Rise:** Using the latest regional scenarios, predictions and trends, describe how the project objectives or project may be vulnerable to impacts (fire, drought, species and habitat loss, etc.) from climate change, other than sea level rise, coastal erosion or flooding. Identify design, siting, or other measures incorporated into the project to reduce these vulnerabilities.

Drought tolerant native plantings will be used throughout and these will support habitat functions depended upon by wildlife and increasing the usefulness of these lands for wildlife resident here or migrating. Retaining and infiltrating stormwater will improve local water resilience and slightly expand local groundwater resources.

**15. Greenhouse Gas Emissions/Climate Change:** If the proposed project will result in production of greenhouse gas emissions (including construction impacts and vehicle miles travelled as part of a public access component), describe the measures your project includes to reduce, minimize or avoid greenhouse gas emissions through project design, implementation construction, or maintenance. What, if any, are the possible sources or sinks of greenhouse gases for your project, such as carbon sequestration from habitats at the site? If one of the project goals is to sequester carbon (reduce greenhouse gas concentrations), how do you intend to ensure continued long term sequestration while achieving project objectives? Do you have any plans to seek carbon credits for the carbon sequestration activities on the project site?

Construction equipment such as a loader and backhoe will be necessary to install the pipe and dig the basin, and their engines will emit GHG's. The equipment will conform the ARB regulations including the filing of the ROAR form.

- 16. Willing Seller:** Projects that involve acquisition of property must involve a willing seller. If your project includes property acquisition, please describe the status and expected conclusion of landowner negotiations.

Acquisition of property is not a part of this project.

#### **GRANT APPLICATION CHECKLIST**

A complete application will consist of the following files:

- ☐ Cover Letter (option) – no more than one page.
- ☐ Grant application form (in Microsoft word or rtf format), includes cover page, project description, preliminary budget and schedule, and additional questions.
- ☐ Project maps and design plans (in one pdf file, 10 MB maximum size)
- ☐ Project photos (in jpg format)
- ☐ Conservation Corps Consultation Review Document (Part C. above) signed off by the Conservation Corps
- ☐ For Nonprofit Organizations, please submit completed Nonprofit Organization Pre-Award Questionnaire (Part D above)

Applications should be emailed to [daniel.sciolini@bhc.ca.gov](mailto:daniel.sciolini@bhc.ca.gov). If you are unable to email your application, you may send the electronic files on a CD or other common electronic storage device. Mail the files to: Baldwin Hills Conservancy, 5120 West Goldleaf Circle Drive, L.A. CA 90056

**Grant applications must be received by the Baldwin Hills Conservancy by  
5:00 p.m. (PST) on March 31, 2018**

## Attachment 1 – Conservation Corps Consultation

Applicants for grants from the Conservancy for restoration and ecosystem protection projects shall consult with representatives of the California Conservation Corps (CCC) and the California Association of Local Conservation Corps (CALCC), the entity representing the certified community conservation corps, (collectively, “the Corps”) to determine the feasibility of the Corps participation.

The Corps have already determined that it is **not feasible** to use their services on restoration and ecosystem protection projects that solely involve either planning or acquisition. Applications for these projects are exempt from the consultation requirement. All other applications will be considered incomplete unless they include the Corps consultation described below.

Grantees awarded funds to undertake a project where it has been determined that Corps services can be used will be required to include the Corps in the scope of work as a condition of the Conservancy’s grant agreement unless the Corps subsequently declines to participate in the project.

**Applicants are encouraged to contact the CCC/CALCC representatives to discuss feasibility as early in the project development process as possible.** The Corps will complete its review in 5 business days, but will not be able to review project applications in less than 5 business days. The process for consultation is provided below:

Step 1: Prior to submittal of an application, the Grantee will compile the following information:

- ☐ Project Title
- ☐ Project Description (identifying key project activities and deliverables)
- ☐ Project Map (showing project location)
- ☐ Project Implementation estimated start and end dates

Step 2: Grantee submits the information via email concurrently to the CCC and CALCC representatives:

California Conservation Corps

Email: [Prop1@ccc.ca.gov](mailto:Prop1@ccc.ca.gov)

Send to: Julie Wosley

Phone: (530) 223-3045

CA Association of Local Conservation Corps

Email: [inquiry@prop1communitycorps.org](mailto:inquiry@prop1communitycorps.org)

Send to: Crystal Muhlenkamp

Phone: 916-426-9170 ext. 0

Step 3: Both the CCC and CALCC representatives will review the submitted information, contact the Grantee if necessary, and respond to the applicant with a Corps Consultation Review Document indicating:

- (1) It is NOT feasible for CCC and/or certified community conservation corps services to be used on the project; or
- (2) It is feasible for the CCC and/or certified community conservation corps services to be used on the project and identifying the aspects of the project that can be accomplished with Corps services.

Step 4: Grantees submits both signed and completed Corps Consultation Review Document in the Conservancy Grant Application.



## Corps Consultation Review Document

Within five (5) business days of receiving the project information, both the CCC and CALCC representatives will review the submitted information, contact the Grantee if necessary, and respond to the applicant with this Corps Consultation Review Document. Two (2) copies of this Corps Consultation Review Document (one completed by the CCC and one from the CALCC) must be included in applications to the Conservancy for Proposition 1 funded grants.

1. Name of Applicant:

Project Title:

Department/Conservancy to which you are applying for funding:

### To be completed by Applicant:

Is this application solely for planning or acquisition?

- ☐ Yes (application is exempt from the requirement to consult with the Corps)
- ☐ No (proceed to #2)

### To be completed by Corps:

This Consultation Review Document is being prepared by:

- ☐ The California Conservation Corps (CCC)
- ☐ California Association of Local Conservation Corps (CALCC)

2. Applicant has submitted the required information by email to the California Conservation Corps (CCC) and California Association of Local Conservation Corps (CALCC):

- ☐ Yes (applicant has submitted all necessary information to CCC and CALCC)
- ☐ No (applicant has not submitted all information or did not submit information to both Corps – application is deemed non-compliant)

3. After consulting with the project applicant, the CCC and CALCC has determined the following:

- ☐ It is NOT feasible for CCC and/or certified community conservation corps services to be used on the project (deemed compliant)
- ☐ It is feasible for the CCC and/or certified community conservation corps services to be used on the project and the following aspects of the project can be accomplished with Corps services (deemed compliant).

---

Authorizing Representative Name  
(Please Print)

Signature

Date

CCC AND CALCC REPRESENTATIVES WILL RETURN THIS FORM AS DOCUMENTATION OF CONSULTATION BY EMAIL TO APPLICANT WITHIN FIVE (5) BUSINESS DAYS OF RECEIPT AS VERIFICATION OF CONSULTATION. APPLICANT WILL INCLUDE A COPY OF EACH DOCUMENT AS PART OF THE PROJECT APPLICATION.

## Attachment 2. Non-Profit Organization Pre-Award Questionnaire

All nonprofit organizations must complete this questionnaire and include it in their application.

### CONTACT INFO

<b>Organization</b>	<b>CCC Foundation</b>		
<b>Contact Person</b>	Adam Somers	<b>Email</b>	adam@cccfoundation.net
<b>Phone</b>	310.560.4840	<b>Fax</b>	N/A

### GENERAL INFORMATION

1. Please attach a copy of your most recent financial reports with your response to this questionnaire.
2. Have you had a financial audit within the last three years by an independent auditor? Yes ☐ No ☒  
If yes, please provide a copy of the audit report.
3. Does your organization have appropriate segregation of duties to prevent one individual from processing an entire financial transaction? Yes ☒ No ☐
4. Does your organization have controls to prevent expenditure of funds in excess of what is approved in your project budget? Yes ☒ No ☐
5. Does your organization have a conflict of interest policy? Yes ☒ No ☐
6. How much unrestricted money does your organization raise annually?
  - a. \$50,000.00
7. Is there a Finance Committee of the board of directors, or does the Board make all financial decisions?
  - a. The Executive Committee, in concert with the Executive Director, make the financial decisions.
8. What are the Treasurer's duties?
  - a. Make reports to the Board of Directors, supervises the filing of the annual tax documents, and reviews the bi-monthly P & L and Balance Sheet reports.

### CASH MANAGEMENT

9. Are grant funds accounted for through segregated accounts? Yes ☒ No ☐
10. Are all disbursements properly documented with evidence of receipt of goods or performance of service? Yes ☒ No ☐

### PAYROLL

11. Does your organization have a time reporting system developed to determine and explain proper labor and overhead charges billed to the grant? Yes ☒ No ☐

12. Have you developed procedures to ensure fair and competitive contracting? Yes ☒ No ☐

13. Is there an effective system of identifying expenditures for time, travel and purchase of supplies to determine relevancy to individual grant projects? Yes ☒ No ☐

#### PROPERTY MANAGEMENT

*(Complete this section, if State grants will be used to purchase physical assets.)*

14. Are detailed records of individual capital assets kept and periodically balanced with the general ledger accounts? Yes ☒ No ☐

15. Are there effective procedures for authorizing and accounting for the disposal of property and equipment? Yes ☒ No ☐

#### INDIRECT COSTS

16. Does the organization have an established methodology for calculating indirect costs or overhead? Yes ☒ No ☐

17. Is this used consistently for all grants and contracts? Yes ☒ No ☐

#### COST SHARING

18. Does the organization have a means to determine and document that it has met cost-sharing goals for each project? Yes ☒ No ☐

19. Do your financial records identify the receipt and expenditure of funds separately for each grant or contract? Yes ☒ No ☐

#### COMPLIANCE

20. Does your organization have a formal system for complying with the payment of prevailing wages? Yes ☒ No ☐

21. Does your organization have a system in place to ensure it does not use contractors who may be suspended or debarred from receiving federal or state contracts? Yes ☒ No ☐

***I certify that the above information accurately represents the organization of which I am a representative.***

**Name of person completing questionnaire: Adam Somers**

**Title: Executive Director**

**Signature:**  **Date: March 30, 2018**

**California Conservation Corps and Certified Community Conservation Corps  
Proposition 1 - Water Bond  
Corps Consultation Review Document  
2018**

Unless an exempted project, this Corps Consultation Review Document must be completed by California Conservation Corps and Community Conservation Corps staff and accompany applications for projects or grants seeking funds through Proposition 1, Chapter 6, Protecting Rivers, Lakes, Streams, Coastal Waters and Watersheds. Non-exempt applications that do not include this document demonstrating that the Corps have been consulted will be deemed "noncompliant" and will not be considered for funding.

1. Name of Applicant: **California Conservation Corps Foundation**

Project Title: **Stormwater Management Project for Yvonne Brathwaite Burke Sports Complex**

Department/Conservancy to which you are applying for funding: **Baldwin Hills Conservancy**

**To be completed by Applicant:**

Is this application solely for planning or acquisition?

- ☐ Yes (application is exempt from the requirement to consult with the Corps)  
☒ No (proceed to #2)

**To be completed by Corps:**

This Consultation Review Document is being prepared by:

- ☒ The California Conservation Corps (CCC)  
☐ California Association of Local Conservation Corps (CALCC)

2. Applicant has submitted the required information by email to the California Conservation Corps (CCC) and California Association of Local Conservation Corps (CALCC):

- ☒ Yes (applicant has submitted all necessary information to CCC)  
☐ No (applicant has not submitted all information or did not submit information to both Corps – application is deemed non-compliant)

3. After consulting with the project applicant, the CCC and CALCC has determined the following:

- ☐ It is NOT feasible for CCC and/or certified community conservation corps services to be used on the project (deemed compliant)  
☒ It is feasible for the CCC services to be used on the project and the following aspects of the project can be accomplished with Corps services (deemed compliant):

***The California Conservation Corps can assist with this project.***

CCC AND CALCC REPRESENTATIVES WILL RETURN THIS FORM AS DOCUMENTATION OF CONSULTATION BY EMAIL TO APPLICANT WITHIN FIVE (5) BUSINESS OF RECEIPT AS VERIFICATION OF CONSULTATION. APPLICANT MUST INCLUDE COPY OF THIS DOCUMENT AS PART OF THE PROJECT APPLICATION.

IF THE CORPS DETERMINE IT IS FEASIBLE TO USE THEIR SERVICES ON THE PROJECT, APPLICANT WILL COORDINATE WITH CORPS TO DEVELOP ESTIMATED COSTS FOR THOSE SERVICES FOR INCLUSION IN THE BUDGET.



Adam Somers <adam@cccfoundation.net>

---

## YBB Stormwater Project

---

**Prop1 Community Corps**

Tue, Mar 27, 2018 at 1:13 PM

<inquiry@prop1communitycorps.org>

To: Adam Somers <adam@cccfoundation.net>

Cc: "Prop 1@CCC" <Prop1@ccc.ca.gov>, "Wolsey, Julie@CCC" <Julie.Wolsey@ccc.ca.gov>

Hello Adam,

Thank you for contacting the Local Conservation Corps. Unfortunately, we are unable to participate in this project. Please include this email with your application as proof that you reached out to the Local Conservation Corps.

Thank you,  
Dominique

**California Association of Local Conservation  
Corps**

**Proposition 1 – Water Bond  
Consultation Review Document**

Applicant has submitted the required information by email to the Local Conservation Corps (CALCC):

✓Yes (applicant has submitted all necessary information to CALCC)

After consulting with the project applicant, the CALCC has determined the following:

✓It is NOT feasible for CALCC to be used on the project (deemed compliant)

3/27/2018

California Conservation Corps Mail - YBB Stormwater Project

**APPLICANT WILL INCLUDE THIS DOCUMENT AS PART OF THE  
PROJECT APPLICATION.**

[Quoted text hidden]



COUNTY OF LOS ANGELES  
DEPARTMENT OF PARKS AND RECREATION

*"Parks Make Life Better!"*

John Wicker, Director

Norma E. Garcia, Chief Deputy Director

March 28, 2018

Mr. Adam Somers  
Executive Director  
California Conservation Corps Foundation  
921 11th Street, Suite 1100  
Sacramento, CA 95814

Dear Mr. Somers:

**KENNETH HAHN STATE RECREATION AREA  
\*YVONNE BRATHWAITE BURKE SPORTS COMPLEX\*  
PROPOSITION ONE STORM WATER GRANT PROGRAM  
SUPPORT LETTER**

The County of Los Angeles Department of Parks and Recreation (DPR) is pleased to support the California Conservation Corps Foundation's Kenneth Hahn State Recreation Area – Yvonne Brathwaite Burke Sports Complex Storm Water Capture Project and your application for the Proposition One Grant Program.

The proposed project will divert, capture and infiltrate on-site storm water, rather than allowing it to enter the storm drain system outside the park. Instead, storm water will be allowed to percolate into the ground, reducing the amount of pollutants discharged off-site. The proposed project will not result in loss of any park amenities.

This letter is to inform you that DPR fully supports the project and looks forward to working with the California Conservation Corps Foundation and the Baldwin Hills Conservancy to improve water quality. If you have any questions, please contact Mr. Todd Schmit of my staff at (626) 588-5346 or via email at [tschmit@parks.lacounty.gov](mailto:tschmit@parks.lacounty.gov).

Sincerely,

Alina Bokde  
Deputy Director

AB:JS:TS:ts

c: Parks and Recreation (J. Smith, T. Schmit)

6:55 AM

## California Conservation Corps Foundation

## Profit &amp; Loss

03/28/18

January through December 2017

Accrual Basis

	Jan - Dec 17
Ordinary Income/Expense	
Income	
40001 · UNRESTRICTED REVENUE	
40002 · DIRECT PUBLIC SUPPORT - UR	
44500 · Government Grants Ur	
44520 · Federal Grants - UR	21,744.00
44540 · State Grants -UR	121,100.00
Total 44500 · Government Grants Ur	142,844.00
43010 · Corporate Contributions - UR	
Edison International	15,000.00
AT & T	20,000.00
43010 · Corporate Contributions - UR - Other	25.00
Total 43010 · Corporate Contributions - UR	35,025.00
43020 · Foundation/NPO Contribution-UR	
43345 · The Hoag Foundation	25,000.00
Total 43020 · Foundation/NPO Contribution-UR	25,000.00
43040 · Individual Contributions-UR	
43040-3 · Board Giving - UR	1,000.00
43460 · Legacies and Bequests - UR	25.00
Total 43040 · Individual Contributions-UR	1,025.00
Total 40002 · DIRECT PUBLIC SUPPORT - UR	203,894.00
44800 · INDIRECT PUBLIC SUPPORT - UR	
43042 · United Way	2,776.71
43041 · Network for Good	2,528.75
Total 44800 · INDIRECT PUBLIC SUPPORT - UR	5,305.46
Total 40001 · UNRESTRICTED REVENUE	209,199.46
42001 · CAB REVENUES - DESIGNATED	
43060 · The CAB Conference	
43450 · CAB Donations	1,735.00
Returned Overage - CAB Conf	544.14
Total 43060 · The CAB Conference	2,279.14
43050 · CAB Accounts	
01 · Chico CAB	445.01
02 · Fortuna CAB	6,877.45
04 · Greenwood CAB	4,000.00
05 · Inland Empire CAB	4,550.25
06 · Los Angeles CAB	
Returned Overage - LA	398.77
06 · Los Angeles CAB - Other	5,625.00
Total 06 · Los Angeles CAB	6,023.77
08 · Pomona CAB	15,075.00
09 · Stockton CAB	1,400.00
11 · Napa CAB	574.00
Total 43050 · CAB Accounts	38,945.48
43040-6 · The Reading	40.00
Total 42001 · CAB REVENUES - DESIGNATED	41,264.62



## California Conservation Corps Foundation

## Profit &amp; Loss

03/28/18

January through December 2017

Accrual Basis

	Jan - Dec 17
<b>40003 · RESTRICTED PUBLIC SUPPORT</b>	
<b>43340 · Foundation/NPO Grants - RESTRIC</b>	
43310 · Corporate/Business Grants RESTR	240.00
43344 · Nat'l Park FnD/The No RESTR	15,000.00
43343 · Youth Outside - RESTR	15,000.00
43341 · Liberty Hill Foundation - RESTR	10,000.00
43342 · Herbst Foundation -RESTR	10,000.00
<b>Total 43340 · Foundation/NPO Grants - RESTRIC</b>	<b>50,240.00</b>
<b>Total 40003 · RESTRICTED PUBLIC SUPPORT</b>	<b>50,240.00</b>
<b>43500 · EARNED INCOME</b>	
43501 · Dividend/Interest	6.64
<b>Total 43500 · EARNED INCOME</b>	<b>6.64</b>
<b>46400 · Other Types of Income</b>	
46430 · Miscellaneous Revenue	100.00
<b>Total 46400 · Other Types of Income</b>	<b>100.00</b>
<b>Total Income</b>	<b>300,810.72</b>
<b>Gross Profit</b>	<b>300,810.72</b>
<b>Expense</b>	
<b>PROGRAMS</b>	
62115 · Project Management	150.00
<b>CAB Conference</b>	
99400 · Tranfers In - CAB Conf	-2,000.00
99500 · Transfer Out	2,000.00
Overage to Be Returned	544.14
Entertainment	2,000.00
<b>Total CAB Conference</b>	<b>2,544.14</b>
<b>CCC Programs</b>	
Admission Fees	167.00
<b>Total CCC Programs</b>	<b>167.00</b>
Core Member Development	2,700.00
60300 · Awards and Grants	
64013 · Enrollment Fees	989.00
<b>Total 60300 · Awards and Grants</b>	<b>989.00</b>
<b>Total PROGRAMS</b>	<b>6,550.14</b>
<b>64000 · ADMINISTRATION- EXPENSES</b>	
64005 · Bank Service Fees	90.00
64012 · Filing Fees	74.00
64016 · Venue Rental	210.00
64017 · Tickets & Admissions	1,946.00
64020 · Office Supplies	167.66
64021 · Office Equipment	79.99
64022 · Equipment Rental	4,551.41
64025 · Postage, Mailing	166.79
64040 · Food & Beverage	16,733.42

**Profit & Loss**

January through December 2017

	Jan - Dec 17
<b>64050 · Travel</b>	
64051 · Travel - Car Rental	329.26
64052 · Travel - Lodging	4,828.92
64053 · Travel - Meals	3,676.48
64054 · Gas / Tolls / Parking	2,578.56
64055 · Airfare	568.20
65099 · Travel-Other	1,596.90
65056 · Travel-Local (Mileage)	64.20
<b>Total 64050 · Travel</b>	<b>13,642.52</b>
<b>Total 64000 · ADMINISTRATION- EXPENSES</b>	<b>37,661.79</b>
<b>65000 · OPERATIONS</b>	
65060 · Insurance	
65062 · Insurance - Liability, D and O	2,975.58
<b>Total 65060 · Insurance</b>	<b>2,975.58</b>
65050 · Telephone, Telecommunications	304.00
65040 · Supplies	
65041 · Gear	2,077.11
65040 · Supplies - Other	357.02
<b>Total 65040 · Supplies</b>	<b>2,434.13</b>
65030 · Printing and Copying	868.65
65010 · Books, Subscriptions, Reference	164.01
<b>Total 65000 · OPERATIONS</b>	<b>6,746.37</b>
<b>64500 · MARKETING EXPENSES</b>	
64570 · Website/Technology	
64574 · Software	417.36
64570 · Website/Technology - Other	1,188.00
<b>Total 64570 · Website/Technology</b>	<b>1,605.36</b>
Entertainment	777.78
Volunteer Day	
Food & Beverage	15.17
<b>Total Volunteer Day</b>	<b>15.17</b>
<b>Total 64500 · MARKETING EXPENSES</b>	<b>2,398.31</b>
<b>62100 · Contract Services</b>	
62170 · A/V Production	250.00
62200 · Consulting Services	52,000.00
62150* · Outside Contract Services	107,760.00
62110 · Accounting Fees	3,913.75
62150 · CCCF-Outside Contract Services	29,821.44
<b>Total 62100 · Contract Services</b>	<b>193,745.19</b>
62800 · Facilities and Equipment	
62840 · Equip Rental and Maintenance	13.00
<b>Total 62800 · Facilities and Equipment</b>	<b>13.00</b>
<b>Total Expense</b>	<b>247,114.80</b>
<b>Net Ordinary Income</b>	<b>53,695.92</b>
<b>Net Income</b>	<b>53,695.92</b>

6:56 AM

## California Conservation Corps Foundation

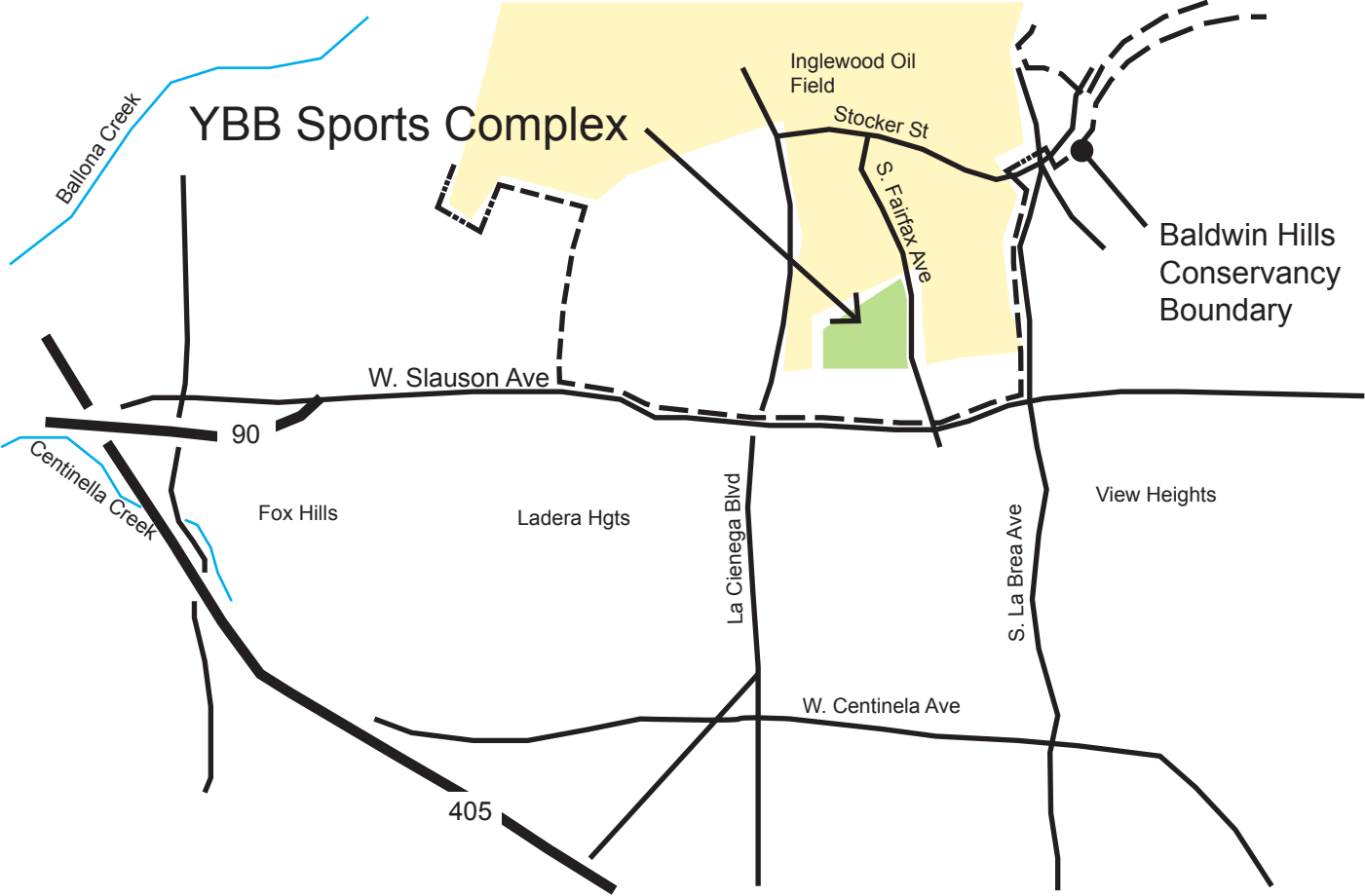
## Balance Sheet

03/28/18

As of December 31, 2017

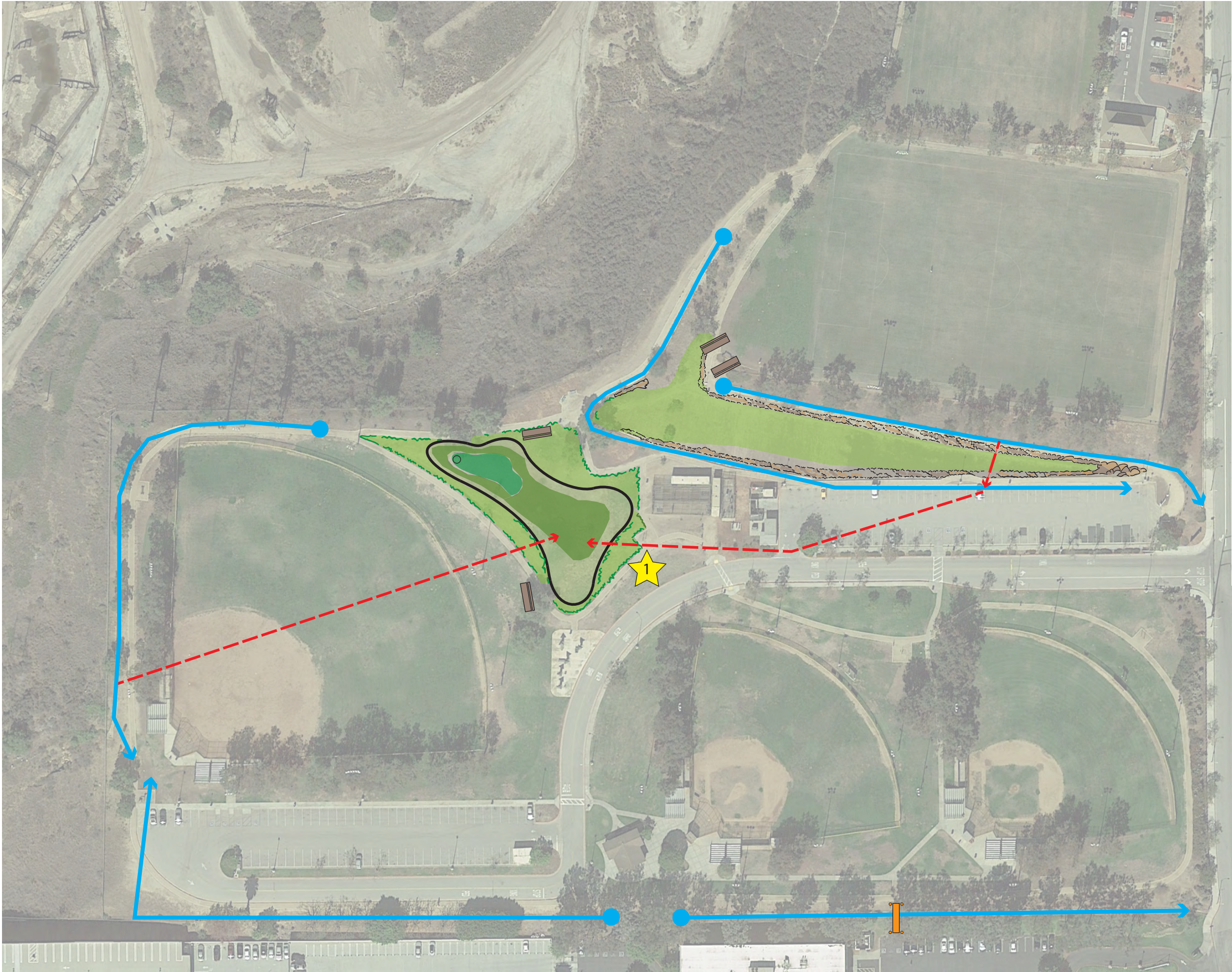
Accrual Basis

	Dec 31, 17
<b>ASSETS</b>	
Current Assets	
Checking/Savings	
10100 · B of A Checking Acc't	138,232.60
10200 · Bank of America Maximizer	33,514.39
Total Checking/Savings	171,746.99
Accounts Receivable	
11500 · Advances Paid Out	459.45
Total Accounts Receivable	459.45
Other Current Assets	
13000 · Prepaid Expenses	1,250.00
Total Other Current Assets	1,250.00
Total Current Assets	173,456.44
<b>TOTAL ASSETS</b>	<b>173,456.44</b>
<b>LIABILITIES &amp; EQUITY</b>	
Equity	
31000 · Net Assets - UNRESTRICTED	82,429.84
31600 · Net Assets - DESIGNATED UR	
31601 · Designated Funds - Chico	200.00
31602 · Designated Funds - Fresno	550.00
31603 · Designated Funds - Fortuna	10,186.54
31604 · Designated funds - Inland Empir	444.00
31605 · Designated Funds - Los Angeles	334.00
31606 · Designate Finds - Pomona	1,100.00
31607 · Designated Funds - Stockton	2,273.57
31608 · Designated Funds - Ukiah	1,556.57
31609 · Designated Funds - The Reading	686.00
Total 31600 · Net Assets - DESIGNATED UR	17,330.68
31700 · Net Assets TEMPORARILY RESTRICT	20,000.00
Net Income	53,695.92
Total Equity	173,456.44
<b>TOTAL LIABILITIES &amp; EQUITY</b>	<b>173,456.44</b>



Regional Map





Key

- Concentrated flow (existing)
- Underground conduit
- Drought tolerant landscape
- Stone slope armoring

Retention Basin:  
Outlet structure  
Base w/ drywells  
Sides sloping 1:3 max

Site Furnishings  
Park Benches  
Interpretive Sign

Pedestrian Bridge

Stormwater Management Project  
Yvonne Brathwaite Burke  
Sports Complex

DakeLuna Consultants  
323-526-8279  
www.dakeluna.com



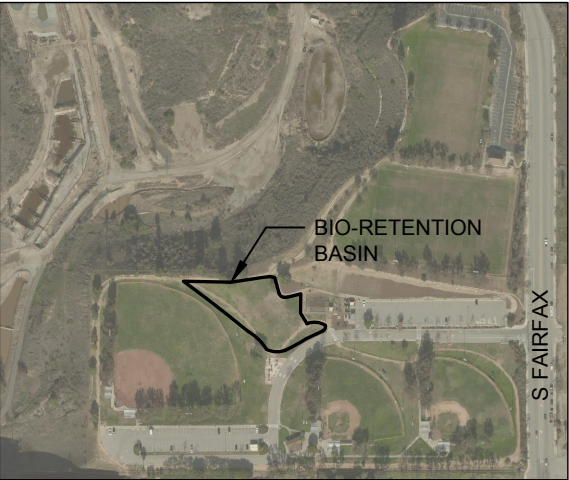


YVONNE BURKE SPORTS COMPLEX

Exhibit 01.01 BIO-RETENTION BASIN

NOTES

- 1. BASIN SIZE BASED ON 10-YEAR DESIGN STORM TO DEPTH OF 6-FEET. TWO ADDITIONAL FEET OF FREEBOARD ASSUMED FOR LARGER STORMS.
- 2. IT WAS ASSUMED 600 LF OF DRAINAGE PIPE WOULD BE REQUIRED TO ROUT FLOW TO BIO-RETENTION BASIN.
- 3. COST AND QUANTITIES ARE CONCEPT LEVEL ONLY.
- 4. COST DO NOT INCLUDE PERMITTING OR AMENITIES.



BASIN VICINITY

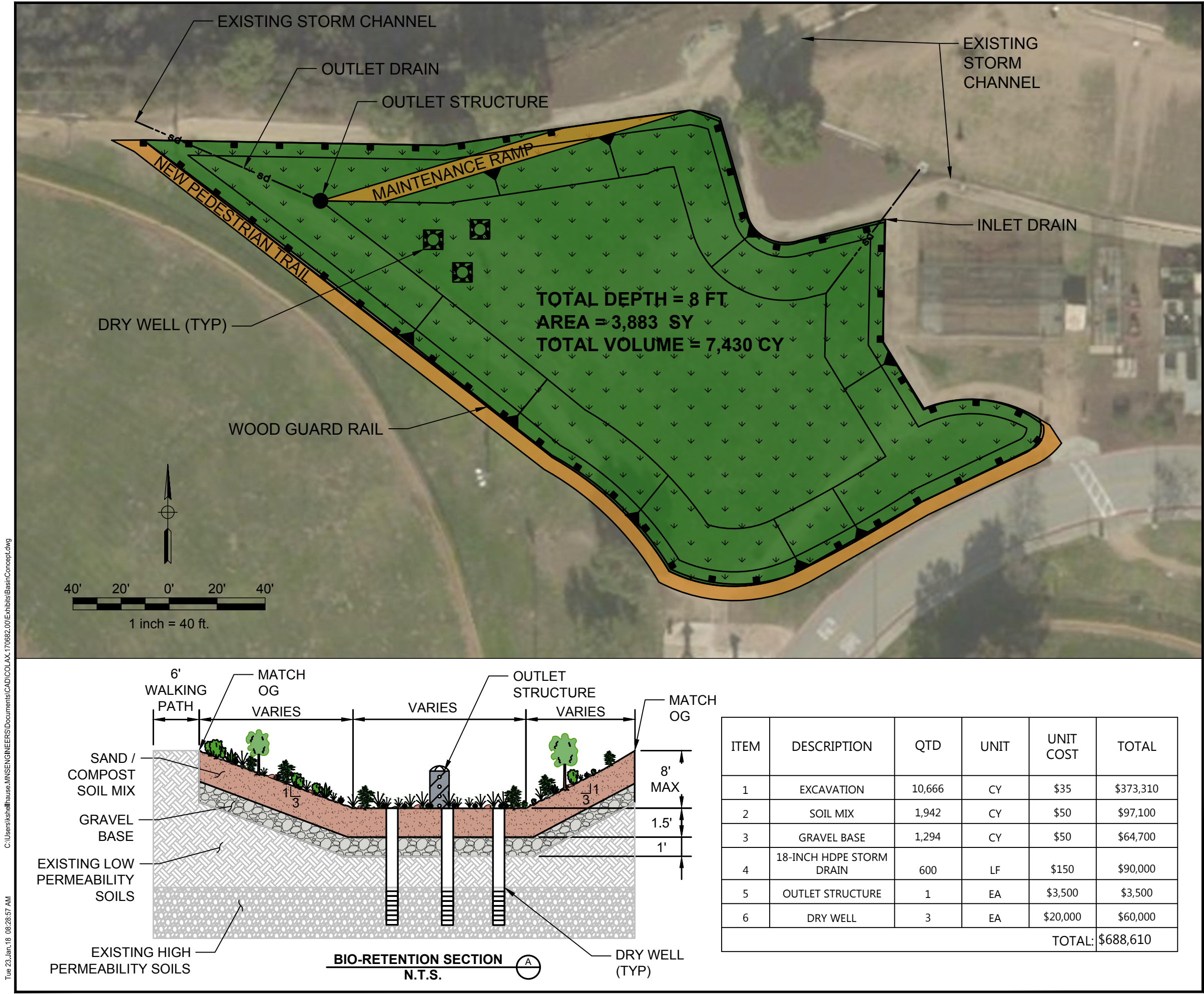
**LEGEND**

- sd--- STORM DRAIN
- GRADING INDICATOR
- GUARD RAIL

**ABBREVIATIONS**

- CY CUBIC YARD
- EA EACH
- FT FEET
- LF LINEAR FEET
- OG ORIGINAL GRADE
- QTD QUANTITY
- SY SQUARE YARD
- TYP TYPICAL

ITEM	DESCRIPTION	QTD	UNIT	UNIT COST	TOTAL
1	EXCAVATION	10,666	CY	\$35	\$373,310
2	SOIL MIX	1,942	CY	\$50	\$97,100
3	GRAVEL BASE	1,294	CY	\$50	\$64,700
4	18-INCH HDPE STORM DRAIN	600	LF	\$150	\$90,000
5	OUTLET STRUCTURE	1	EA	\$3,500	\$3,500
6	DRY WELL	3	EA	\$20,000	\$60,000
				TOTAL:	\$688,610







View to the east from the west edge



Slope and swale on southern edge of park





View along the west edge



Slope and swale on southern edge of park



# BALDWIN HILLS CONSERVANCY

5120 West Goldleaf Circle, Suite 290  
Los Angeles, CA 90056  
Phone: (323) 290-5270  
www.bhc.ca.gov

---

## Memorandum

**To:** Governing Board

**From:** Noa Rishe Khalili, Park & Recreation Specialist

**Date:** May 18, 2018

**Re:** Item 5: Consideration of a Resolution Authorizing an Amendment to the Project Term and Budget for Proposition 84 Agreement #BHC15002 with Culver City for the Park to Playa - Ballona Creek Connection

**Recommendation:** Staff recommends approving Resolution #18-02, authorizing the Executive Officer to amend the project term and budget for Proposition 84 Agreement #BHC15002 with Culver City for the Park to Playa - Ballona Creek Connection.

**Background:** In October 2015 the Governing Board approved Resolution #15-03, which authorized a Grant of BHC Proposition 84 Funds, in the amount of \$ 336,143 to Culver City, for the Ballona Creek Connection Trail Segment of Park to Playa. Culver City provided the required matching funds totaling \$135,360. In April 2017 the Governing Board approved Resolution #16-09, which authorized an Amendment to the Project Scope, Timeline and Budget for Proposition 84 Agreement #BHC15002.

- Amendment 1 extended the Timeline by 12 months to June 30, 2018.
- Amendment 2 revised the project budget to augment the BHC Prop 84 funds by \$ 43,753 and Culver City matching funds by \$ 26,404 which increased the overall project budget to \$ 541,572.

Currently, Culver City has requested a 12-month extension of the performance period, and has increased City matching funds by \$ 21,000 bringing the total contribution to \$ 182,764 (See *Attachment 1: Amendment Request Letter*). The necessity for extension is due to unanticipated delays related to prolonged contract negotiations and finalization of an invoicing template.

The City awarded a contract for the construction of the Park to Playa – Ballona Creek Connection Project to CEM Construction Corp. on November 13, 2017. The contract was executed by the City Manager on April 24, 2018, and construction mobilization began May 7, 2018 (See *attachment 2: Project Timeline*). Construction is scheduled for completion by July 30, 2018.

The \$21,000 increase to the City matching funds will account for additional design services associated with the change in ADA pathway in the lower parking lot, construction management services related to the unsuccessful initial bid process in 2017, and adjustments to include the estimated cost of necessary deputy inspections for the project.

These changes will affect items A and D in the project cost table (*See Attachment 3, Revised Project Administration Budget*) as follows:

- 1) Item A.1: Administration – Project Design, Testing and Project Management matching funds contribution will increase from 24,070 to \$38,070
- 2) Item D.1: Administration – Project Management and Closeout matching funds contribution will be increased from \$13,000 to \$20,000

If Resolution # 18-02 is approved, the 12-month extension would allow for project completion within the current construction schedule, accounting for any unforeseen field conditions during construction, and provide sufficient time for project approval and close out.

## BALDWIN HILLS CONSERVANCY (BHC)

### RESOLUTION 18-02

RESOLUTION AUTHORIZING THE EXECUTIVE OFFICER TO AMEND THE PROJECT TIMELINE AND BUDGET IN AN AMOUNT NOT TO EXCEED FOR GRANT AGREEMENT #BHC15002 WITH CULVER CITY FOR THE PARK TO PLAYA TRAIL BALLONA CREEK CONNECTION

WHEREAS, under Division 22.7 of the California Public Resources Code, the Baldwin Hills Conservancy was created to acquire open space and manage public lands within the Baldwin Hills area and to provide recreation, restoration and protection of wildlife habitat within the Conservancy territory; and

WHEREAS, Public Resources Code 32569 (a) states the Conservancy may award grants to local public agencies for the purposes of its division; and

WHEREAS, pursuant to Public Resources Code 75060, funds from the Safe Drinking Water, Water Quality and Supply, Flood Control, River and Coastal Protection Bond Act of 2006 are available for projects in the Baldwin Hills and Ballona Creek Watershed to promote access to and enjoyment of the coastal resources of the State; and

WHEREAS, the BHC Governing Board adopted Resolution 15-03, awarding Culver City \$336,143 in BHC Prop 84 funds for the Park to Playa Trail Ballona Creek Connection; and

WHEREAS, the BHC Governing Board adopted Resolution 16-09, authorizing the executive officer to amend the project scope, timeline and budget in an amount not to exceed \$80,000 in BHC Prop 84 funds for the Park to Playa Trail Ballona Creek Connection; and

WHEREAS, Culver City has requested a twelve (12) month performance period extension to allow for completion of the project within the current construction schedule, account for any unforeseen field conditions that may arise during construction, and provide sufficient time for project approval and documentation close out.

WHEREAS, Culver City has requested a \$21,000 increase to its matching funds contribution to account for additional design services associated with the change in ADA pathway in the lower parking lot, construction management services related to the unsuccessful initial bid process in 2017, and adjustments to include the estimated cost of necessary deputy inspections for the project.

WHEREAS, under Public Resources Code 15333 this action is exempt from the environmental impact requirements of the California Environmental Quality Act (CEQA).

NOW THEREFORE BE IT RESOLVED, THE BHC GOVERNING BOARD:

1. AUTHORIZES THE EXECUTIVE OFFICER TO EXTEND THE PERFORMANCE PERIOD BY TWELVE (12) MONTHS THROUGH JUNE 30, 2019
2. AUTHORIZES A BUDGET INCREASE IN AN AMOUNT NOT TO EXCEED \$21,000 IN CULVER CITY MATCHING FUNDS
3. ADOPTS THE RECOMMENDATIONS DATED MAY 18, 2018 FOR THIS ITEM

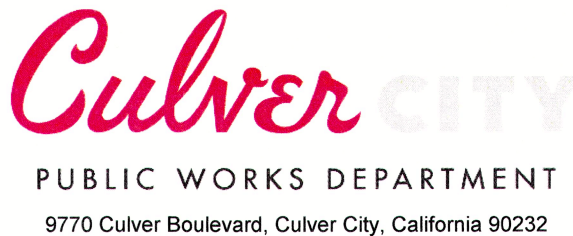
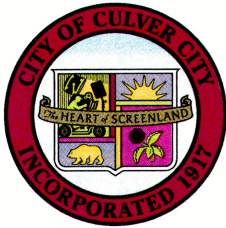
4. APPOINTS THE EXECUTIVE OFFICER, AS AGENT TO CONDUCT ALL NEGOTIATIONS, EXECUTE AND SUBMIT ALL DOCUMENTS INCLUDING, BUT NOT LIMITED TO AGREEMENTS, PAYMENT REQUESTS, AND CERTIFICATIONS WHICH MAY BE NECESSARY FOR THE COMPLETION OF THE AFOREMENTIONED PROJECT(S)

Passed and Adopted by the Board of the  
BALDWIN HILLS CONSERVANCY

On \_\_\_\_\_, 2018.

\_\_\_\_\_  
Jacquelyn Dupont-Walker, Chair

ATTEST: \_\_\_\_\_  
David Edsall, Deputy Attorney General  
State of CA, Department of Justice



Charles D. Herbertson, P.E., LS  
Public Works Director/  
City Engineer

(310) 253-5600

Mate Gaspar, P.E.  
Engineering Services Manager

FAX (310) 253-5626

May 1, 2018

David F. McNeill, Executive Officer  
Baldwin Hills Conservancy  
5120 West Goldleaf Circle, Suite 290  
Los Angeles, CA 90056

**SUBJECT:** REQUEST FOR AN AMENDMENT TO PROPOSITION 84 GRANT AGREEMENT  
NUMBER BHC 15002

Dear Mr. McNeill:

I am writing on behalf of the City of Culver City (the "City") to request an amendment to Proposition 84 Grant Agreement Number BHC 15002 (the "Grant") for the Culver City / Park to Playa – Ballona Creek Connection Project (the "Project") to extend the Performance Period from June 30, 2018 to June 30, 2019 and request an additional \$21,000 to the Culver City Match portion of the project. The City acknowledges that, if approved, this will be the third amendment to the original Agreement. This request is being submitted due to unanticipated delays related to prolonged contract negotiations with the awarded contractor and finalizing an invoicing template that has now been agreed upon by all parties who are crucial to the success of the Project. The City is requesting a 12-month extension to account for any unforeseen field conditions that may arise during construction, weather conditions that may delay construction and sufficient time for project approval and documentation close out.

The City Council officially awarded the project contract to CEM Construction, Corp. November 13, 2017. This initial contractor award was followed by extended discussions over the next several months regarding the contract format and invoicing template. These discussions were necessary to ensure that CEM meets all the applicable requirements for both the material and financial elements of the Project. The invoicing template required agreement from several parties involved in the project, including the contractor, the Los Angeles County Regional Park and Open Space District, the Baldwin Hills Conservancy (BHC), and the City of Culver City. This coordination has been finalized and the final version of the contract was sent to the contractor for signature March 12, 2018. Since then the contractor has sign the contract along with the City of Culver City's Director of Public Works/City Engineer and Attorney's office. The contract is currently awaiting the City's Manager's signature.

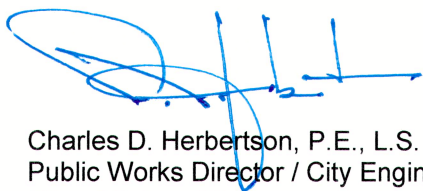
The City of Culver City has increased the contribution toward the City Match by \$21,000.00; increasing the Project's Administration budget from the original \$37,070.00 to \$58,070.00. This increase is due to (1) additional design services associated with the change in the ADA pathway at the lower parking lot as agreed upon by all stakeholders at the end of 2016; (2) construction

management services related to the unsuccessful initial bid process in 2017 and the subsequent re-publishing of the Notice Inviting Bids; and (3) adjustments to include the estimated cost of necessary Deputy Inspections for the Project, which were previously noted as "to be determined."

In closing, I want to affirm that the City of Culver City is fully committed to the development and implementation of the Culver City / Park to Playa – Ballona Creek Connection Project. The Boardwalk lies at the heart of Park to Playa Segment 7 and will be improved concurrently with the construction of the new ADA compliant route that connects the Baldwin Hills Scenic Overlook with Ballona Creek.

If you have any questions regarding the information contained within this request, please contact the Culver City / Park to Playa – Ballona Creek Connection Project Manager, Diana Szymanski, Associate Engineer at (310) 253-5623 or [diana.szymanski@CulverCity.org](mailto:diana.szymanski@CulverCity.org). You may also contact Patrick Reynolds, Parks Manager / City Landscape Architect at (310) 253-6471 or [Patrick.Reynolds@CulverCity.org](mailto:Patrick.Reynolds@CulverCity.org).

Sincerely,



Charles D. Herbertson, P.E., L.S.  
Public Works Director / City Engineer  
City of Culver City  
9770 Culver Blvd.  
Culver City, CA 90232

cc: John Nachbar, City Manager, City of Culver City  
Corey Lakin, Director of Parks, Recreation & Community Services

	OBJECTIVE	AM1 Start Date	AM1 End Date	New Start Date	New End Date
	<b><i>A. Administration: Design &amp; Project Management</i></b>	3/1/2016	12/30/2016	Complete	Complete
	<b><i>B. Construction Timeline Summary: Construct New ADA Path</i></b>	10/1/2017	2/28/2018	5/7/2018	7/30/2018
	<b><i>C. Construction Timeline Summary: Improve Existing CCP Trail/Complete Ballona Creek Connection</i></b>	12/1/2017	4/30/2018	5/7/2018	7/30/2018
	<b><i>D. Administration Timeline Summary: Project Closeout</i></b>	5/1/2018	6/30/2018	8/1/2018	6/30/2019



**Revised Project Administration Budget – City Match Only**  
**Culver City / Park to Playa – Ballona Creek Connection Project**

April 25, 2018

Item #	Description	Budget		
		BHC	Revised CC	TOTAL
A. ADMINISTRATION				
1	Project Design, Testing and Project Management	48,765.00	38,070.00	86,835.00
B. CONSTRUCT NEW ADA PATH (from BHC Overlook Gate to existing upper Boardwalk entry)				
1.A. Mobilization, Demolition & Field Supervision				
	(a) Mobilization	5,000.00	0.00	5,000.00
	(b) Demolition	5,000.00	0.00	5,000.00
	(c) Field Supervision	10,000.00	0.00	10,000.00
Subtotal	Mobilization, Demolition & Field Supervision	20,000.00	0.00	20,000.00
1.B. New Decomposed Granite (D.G.) Pathways along Upper Ballfields and Parking lot Overlook				
	(a) 1. Trim shrubs and tree roots as required.	1,950.00	0.00	1,950.00
	(a) 2. Reshape hillside and walkways as required.	2,000.00	0.00	2,000.00
	(a) 3. Remove existing spray heads and irrigation piping if they conflict with new D.G. pathway,	700.00	0.00	700.00
	(b) Grade and/or existing dirt surfaces along upper ballfields and parking lot overlook,	5,000.00	0.00	5,000.00
	(c) Furnish & install wood edging alongside pathways at upper ball fields and parking lot overlook	9,000.00	0.00	9,000.00
	(d) Place D.G. to create new walkways	25,000.00	0.00	25,000.00
Subtotal	New Decomposed Granite Pathways along Upper Ballfields and Parking lot Overlook	43,650.00	0.00	43,650.00
1.C. New ADA Concrete Ramp/Landings from Upper Ballfield				
	(a) Perform site survey and field verifications,	5,000.00	0.00	5,000.00
	(b) Grading and compaction of hillside for new ADA ramp,	21,620.00	0.00	21,620.00
	(c) Furnish and install gravel subbase and subsoil drainage assembly	0.00	7,000.00	7,000.00
	(d) Furnish, form and place concrete foundations, walls, ramps and landings,	0.00	105,000.00	105,000.00
	(e) Include placement of waterproofing, trench drains and associated piping,	0.00	7,000.00	7,000.00
	(f) Include all guardrails, handrails and connections,	17,000.00	0.00	17,000.00
	(g) Include transition landing to pedestrian crossing	5,000.00	0.00	5,000.00
Subtotal	New ADA Concrete Ramp/Landings from Upper Ballfield	48,620.00	119,000.00	167,620.00
1.D. New ADA parking lot provisions at upper ballfields & new pedestrian crossing at Babe Ruth field				
	(a) 1. Prepare and create new ADA transitions at upper parking lot, new concrete ramp and	8,700.00	0.00	8,700.00
	(a) 2. Prepare and create new ADA transitions at upper parking lot, new D.G. pathway by Babe Ruth field,	1,000.00	0.00	1,000.00



**Revised Project Administration Budget – City Match Only**  
**Culver City / Park to Playa – Ballona Creek Connection Project**

**April 25, 2018**

Item #	Description	Budget		
		BHC	Revised CC	TOTAL
	(b) 1. Perform rework of existing ADA parking including new curbs, asphalt replacement and ADA striping.	7,000.00	0.00	<b>7,000.00</b>
	(b) 2. Perform asphalt repairs at new pedestrian crossing from ADA concrete ramp.	1,000.00	0.00	<b>1,000.00</b>
	(b) 3. Include gravel base, asphalt and slopes per plans and Exhibit F, Standards for Public Works Construction,	1,000.00	0.00	<b>1,000.00</b>
	(c) Include roadway striping for pedestrian crossing and ADA warning,	3,000.00	0.00	<b>3,000.00</b>
	(d) Include furnishing and installation of all crossing signage & ADA striping	2,000.00	0.00	<b>2,000.00</b>
<b>Subtotal</b>	<b>New ADA parking lot provisions at upper ballfields and new pedestrian crossing at Babe Ruth field</b>	<b>23,700.00</b>	<b>0.00</b>	<b>23,700.00</b>
<b>1.E. Wayfinding Installation</b>				
	(a) Receive all signage materials, supports, fasteners and accessories from BHC. Store and protect until installation,	5,000.00	0.00	<b>5,000.00</b>
	(b) Layout, follow installation instructions from BHC representatives, place signage as shown on the wayfinding design documents.	10,000.00	0.00	<b>10,000.00</b>
<b>Subtotal</b>	<b>Wayfinding Installation</b>	<b>15,000.00</b>	<b>0.00</b>	<b>15,000.00</b>
	<b>Subtotal for B. Construction from BHC Gateway to Upper Boardwalk Entry</b>	<b>\$150,970.00</b>	<b>\$119,000.00</b>	<b>\$269,970.00</b>
<b>C. IMPROVE CULVER CITY PARK TRAIL &amp; EXTEND EXISTING CCP TRAIL TO DUQUESNE AVE SIDEWALK</b>				
<b>2.A. Mobilization, Demolition &amp; Field Supervision</b>				
	(a) Mobilization	5,000.00	0.00	<b>5,000.00</b>
	(b) Demolition	5,000.00	0.00	<b>5,000.00</b>
	(c) Field Supervision	10,000.00	0.00	<b>10,000.00</b>
<b>Subtotal</b>	<b>Mobilization, Demolition &amp; Field Supervision</b>	<b>20,000.00</b>	<b>0.00</b>	<b>20,000.00</b>
<b>2.B. Improvements to Boardwalk (wood structures &amp; concrete pathways) from Babe Ruth parking lot down to lower parking lot.</b>				
	(a) 1. Reshape hillside, clear dirt from trail framing, place riprap as noted on the civil plans.	35,000.00	0.00	<b>35,000.00</b>
	(a) 2. Include at lower landing area new concrete retaining walls.	24,000.00	0.00	<b>24,000.00</b>
	(b) Repair any transitions from concrete to wood framing.	3,000.00	0.00	<b>3,000.00</b>
	(c) Relocate City wood framed signage and wood guardrails to allow for extension of landing and slopes to new ADA D.G. path along lower parking lot. Verify requirements in the field.	3,000.00	0.00	<b>3,000.00</b>

**Revised Project Administration Budget – City Match Only**  
**Culver City / Park to Playa – Ballona Creek Connection Project**

**April 25, 2018**

Item #	Description	Budget		
		BHC	Revised CC	TOTAL
<b>Subtotal</b>	<b>Improvements to Boardwalk (wood structures &amp; concrete pathways) from Babe Ruth parking lot down to lower parking lot.</b>	65,000.00	0.00	<b>65,000.00</b>
<b>2.C. New Decomposed Granite ADA pathway from transitional area of Boardwalk to Lower Trail entry ramp at parking lot</b>				
	(a) Remove existing logs and prepare existing dirt surfaces to allow for placement of new treated timbers along this path between the Boardwalk sections,	2,000.00	0.00	<b>2,000.00</b>
	(b) Grade existing dirt surfaces in preparation for new D.G. walkway down to ADA lower section of the Boardwalk wood deck/concrete ramp at the lower parking lot,	1,000.00	0.00	<b>1,000.00</b>
	(c) Furnish & install wood edging inside of the new timber retaining wall sections,	1,000.00	0.00	<b>1,000.00</b>
	(d) Furnish & install decomposed granite to create new ADA pathway,	800.00	0.00	<b>800.00</b>
	(e) Transition from D.G. to existing concrete path	3,000.00	0.00	<b>3,000.00</b>
<b>Subtotal</b>	<b>New D.G. ADA pathway from transitional area of Boardwalk to Lower Trail entry ramp at parking lot</b>	7,000.00	800.00	<b>7,800.00</b>
<b>2.D. New Transition from existing CCP (Nature Trail ) to new ADA crossing</b>				
	(a) Perform site survey and field verifications,	1,400.00	0.00	<b>1,400.00</b>
	(b) Grading and compaction of hillside for new ADA ramp. Relocate small trees as shown on the plans. Minimize tree root damage and removal by use of fill dirt and adjusting ramp slopes if required,	1,000.00	0.00	<b>1,000.00</b>
	(c) Furnish and install gravel subbase and subsoil drainage assembly	1,000.00	0.00	<b>1,000.00</b>
	(d) Furnish, form and place concrete foundations, walls, ramps and landings,	13,000.00	0.00	<b>13,000.00</b>
	(e) Include placement of waterproofing, trench drains and associated piping,	1,000.00	0.00	<b>1,000.00</b>
	(f) Include all guardrails, handrails and connections,	5,000.00	0.00	<b>5,000.00</b>
	(g) Include transition landing to new ADA pedestrian crossing,	500.00	0.00	<b>500.00</b>
	(h) Protect existing street lighting conduits and coordinate new crossing with City representatives.	500.00	0.00	<b>500.00</b>
<b>Subtotal</b>	<b>New Transition from existing CCP (Nature Trail ) to new ADA crossing</b>	23,400.00	0.00	<b>23,400.00</b>

**Revised Project Administration Budget – City Match Only**  
**Culver City / Park to Playa – Ballona Creek Connection Project**

**April 25, 2018**

Item #	Description	Budget		
		BHC	Revised CC	TOTAL
2.E. New Pedestrian Crossing w/ADA curbs				
	(a) Prepare roadway at new ADA crossings on both sides of Duquesne Ave.,	500.00	0.00	500.00
	(b) Saw cut curb, gutter and sidewalk to allow for forming of new ADA pedestrian access ramp,	1,000.00	0.00	1,000.00
	(c) Place subbase, asphalt patch, concrete per plans and Culver City Standards for Public Works Construction,	9,500.00	0.00	9,500.00
	(d) Furnish and install all required crossing signage, crosswalk& ADA striping and truncated detectable warning strips per plans and Culver City Standards for Public Works Construction.	1,500.00	0.00	1,500.00
Subtotal	New Pedestrian Crossing w/ADA curbs	12,500.00	0.00	12,500.00
2.F. Wayfinding Installation				
	(a) Receive all signage materials, supports, fasteners and accessories from BHC. Store and protect until installation,	5,000.00	0.00	5,000.00
	(b) Layout, follow installation instructions from BHC representatives, place signage as shown on the wayfinding design documents.	10,000.00	0.00	10,000.00
Subtotal	Wayfinding Installation	15,000.00	0.00	15,000.00
	Subtotal for C. Improvements to the Culver City Park (CCP) Trail and Extend the existing CCP Trail to Duquesne Ave Sidewalk	\$142,900.00	\$800.00	\$143,700.00
	Total cost for construction of the Park to Playa ADA improvement pathways from the BHC Gateway to the Duquesne Ave Sidewalk	\$293,870.00	\$119,800.00	\$413,670.00
CONSTRUCTION CONTINGENCY		36,473.00	4,894.00	41,367.00
CONSTRUCTION TOTAL		330,343.00	124,694.00	455,037.00
D. ADMINISTRATION				
1	Project Management & Closeout	700.00	20,000.00	20,700.00
ADMINISTRATION TOTOAL		49,465.00	58,070.00	107,535.00
PROJECT TOTAL		\$379,808.00	\$182,764.00	\$562,572.00
		BHC	CC	TOTAL

## BALDWIN HILLS CONSERVANCY

5120 West Goldleaf Circle, Suite 290  
Los Angeles, CA 90056  
Phone: (323) 290-5270  
www.bhc.ca.gov

---

### Memorandum

**To:** Governing Board

**From:** Noa Rishe Khalili, Park & Recreation Specialist

**Date:** May 18, 2018

**Re:** Item 6: Update presentation on the Baldwin Hills Parklands Conservation Program – Stacey Vigallon, Los Angeles Audubon Society and West Los Angeles College Interns

**Recommendation:** *PowerPoint Presentation to be provided at the meeting.*

**Background:** The BHC granted \$124,536 in Proposition 84 funds to the Los Angeles Audubon Society (LAAS) for the *Baldwin Hills Parklands Conservation Program* through BHC Resolution 15-05 on April 15, 2016.

One of the goals of this program was the creation and implementation of a pilot conservation certificate program for West Los Angeles College (WLAC) students. Through the program, WLAC students conduct a variety of conservation activities, such as habitat restoration, trail protection, and the development of interpretive signage while gaining skills and experience that will lead to employment opportunities in parks, conservation, education, environmental, and other industries. The Program also includes a Spring and Summer conservation and craftsmanship day-camp for children ages 7-12. The WLAC students serve as interns for the camp. In addition to the training and education students receive through the program, they are provided with multiple opportunities for volunteer work and internships, to build their resumes and increase their future employment prospects.

In Fall of 2018, the BHC and LAAS began discussions with WLAC on the potential for integration of the *Conservation Certificate Program* into the WLAC course offerings. The result of the discussions was the creation of a non-credit course titled: "Conservation Studies Certificate Program" (See *Attachment 1: Conservation Studies Certificate Program Documentation*). This program was developed by WLAC professors Dr. Vered Mirmovich, and Dr. Lisa Saperston in collaboration with LAAS and BHC staff. The program was submitted by the WLAC Vocational Education Department and was approved by the WLAC Academic Senate last month. It must now be approved by the Los Angeles Community College District (LACCD) Faculty; LACCD Board of Trustees; and Academic Senate for California Community Colleges. If the Program achieves all necessary approvals, enrollment will begin in Fall 2018.



## **Program Narrative for Conservation Studies Certificate of Completion**

### **Criteria A: Appropriateness to Mission**

In accordance with the West Los Angeles College's (WEST) mission to provide a transformative educational experience for every student, the Conservation Studies Certificate of Completion confirms that a student has achieved acquired environmental conservations, public education skills and work experience outlined in the approved sequence of courses: VOC ED 222CE and VOC ED 223CE. The Conservation Studies Certificate of Completion serves as a recognizable accomplishment of career preparation and job training to be applied toward future employment in the environmental, conservation, public education, and social advocacy sectors.

### **Criteria B: Need**

According to the U.S. Bureau of Labor Statistics – Annual National Employment in Environment, Conservation, and Social Advocacy increased 13.4 % from 2009-2016 with a total of 172,600 employees in 2016. As one of the biggest conservation employers in Los Angeles, the LA County Department of Parks and Recreation currently employs 2,500 people. Many other local government agencies, non-profit organizations, and private employers seek candidates with training in environmental restoration, conservation, public education and social advocacy. These jobs include Parks and Recreation, Fish and Wildlife Services, Environmental Science, Event Planning, Natural Resource Management, Teaching Interpretation, Communications, Social Advocacy, Environmental Advocacy, Landscaping, Environmental Consulting, Research and Development, Technical Consulting, and Forestry.

The Conservation Studies Certificate of Completion will provide students with education and training that will prepare them for these jobs. Job skills are taught and practiced as part of Conservation Studies Certificate of Completion. The certificate was developed by LA Audubon and the State of California Baldwin Hills Conservancy in conjunction with WLAC and signals to potential employers that the certificate holder has a prescribed set of skills and work experience as described in Criteria C section below.

A pilot for this program (Spring and Fall 2017) demonstrated a proven track record providing student employment after completion through local and regional employment opportunities including the Baldwin Hills Parklands Spring and Summer Conservation Camps, Baldwin Hills Greenhouse Summer Habitat Restoration Internships, Snowy Plover Education Program and Kenneth Hahn Education Program.

The Conservation Studies Certificate of Completion is currently using the Baldwin Hills Parklands, directly adjacent to West LA College as a model for urban conservation. It is the

largest collective open space in the Los Angeles Basin and plays an essential role in the health of surrounding neighborhoods and the broader ecological community of the Ballona Creek watershed. This area also serves as an island of habitat for native plants and wildlife within the sea of urbanization that now largely characterizes the Ballona Creek Watershed. These characteristics make the Baldwin Hills Parklands an ideal outdoor classroom setting and model for the Conservation Studies Certificate of Completion.

## **Criteria C: Curriculum Standards**

Conservation Studies Certificate of Completion

TOPCODE: 0115.00 - Natural Resources

The Conservation Studies Certificate of Completion prescribed set of skills include:

- Reading, understanding, and creating maps of landscapes and ecosystems using geospatial technology
- Providing public education through community outreach for youth and adults through public speaking, educational display creation, and representing environmental organizations at public events
- Using and applying the scientific method in the field collection of environmental data including as part of Community Based Science applications and project design
- Conducting scientific observation including descriptions and drawings of the natural environment
- Study local wildlife through techniques such as monitoring, observation, tracking, scat analysis, and wildlife camera monitoring
- Propagating and restoring native plants and eradicating invasive plants
- Building and implementation of irrigation systems for native plants in public areas including sustainable and drought tolerant landscapes
- Implementing Tilden's Principles of Interpretation during interpretive tours and public presentations
- Designing and implementing lesson plans for education of children in grades k-12
- Gaining proficiency in environmental law and policy, especially relating to land, water conservation, and special status species protection.
- Developing a comprehensive foundation of knowledge in the natural history of the Los Angeles area including: hydrology, geology, ecology, botany, zoology, and cultural history.
- Understanding general principles of sustainable landscape ecology
- Building awareness of the importance of Urban Open Space
- Working collaboratively on complex problems such as designing multi-use trails and setting up community based science projects.

# BALDWIN HILLS CONSERVANCY

5120 West Goldleaf Circle, Suite 290  
Los Angeles, CA 90056  
(323) 290-5270 Phone  
[www.bhc.ca.gov](http://www.bhc.ca.gov)

---

## Memorandum

**To:** Governing Board  
**From:** David McNeill, Executive Officer  
**Date:** May 18, 2018  
**Re:** Item 7: Executive Officer Report

### **Projects Status Report**

Please see Attachment #1 for the updated Baldwin Hills Conservancy (BHC) Local Assistance/Capital Outlay Projects Status Report.

### **Fiscal Update**

Please see Attachment #2 - BHC Summary Expenditure Sheet by Fund, and Attachment #3 - BHC Prop 40 & Prop 84 Bond Cash Funds. The reports correspond with the end of month nine (9) for the 2017-2018 Fiscal Year.

## BHC Project Status Report

Project Title	Grantee	Contract ID	Fund Source	Funds Allocated	Agreement Expiration	PROJECT STATUS
<b>La Cienega Pedestrian Bridge Project</b>	Los Angeles County Department of Parks and Recreation	BHC17003	Prop 40	\$3,000,000	<b>TBD</b>	Prop 40 funds approved June 2017; RFP responses received February 2018; Negotiations w/ selected design-build contractor in-process; Item to go before BOS Summer 2018; Estimated project completion in 2020.
<b>Healthy Living in the Parklands Initiative</b>	The City Project	BHC17004	Prop 40	\$250,000	12/31/2019	Project status meeting held February 2018; Draft Baseline Report received early April; Project schedule undergoing revisions at this time.
<b>Martin Luther King Jr. Memorial Tree Grove</b>	Los Angeles County Department of Parks and Recreation	BHC1709	Prop 40	\$200,000	6/30/2018	Dedication event held March 31, 2018 at KHSRA; Chair Jacqueline Dupont-Walker made public remarks on behalf of the BHC Board; Event received substantial press coverage and was well-attended; Project closeout in progress.
<b>Baldwin Hills Parklands Conservation Project</b>	Los Angeles Audubon Society (LAAS)	BHC15004	Prop 84	\$124,536	8/31/2019	West LA College students (16) currently in Spring session of the BHP Conservation Certificate Program; College has created a non-credit Conservation Studies Certificate Program subject to internal approvals at this time; Project completion Summer 2020.



## BHC Project Status Report

Project Title	Grantee	Contract ID	Fund Source	Funds Allocated	Agreement Expiration	PROJECT STATUS
<b>Park to Playa Trail - Ballona Creek Connection</b>	Culver City	BHC15002	Prop 84	\$379,808	6/30/2018	Construction contract between Culver City and CEM Construction, Corp was executed April 2018; Construction began May 7, 2018; City requested a 12-month term extension to June 2019 and will increase the budget for City matching funds; Item is presented for Board consideration Item 5.
<b>Baldwin Hills Scenic Overlook Trail and Stormwater Improvement Project</b>	Los Angeles Conservation Corps (LACC)	BHC1708	Prop 84	\$830,684	6/30/2020	Work began April 30, 2018; Informational signs and flyers about project are posted on-site and online; Construction meetings held bi-weekly; Project completion expected Spring 2020.
<b>Waste Transfer Station Stormwater Diversion and Rain Garden Project</b>	Culver City	BHC16001	Prop 1	\$606,000	7/31/2018	Phase 1 Diversion System: Culver City currently working with contractor to resolve change orders; Project closeout and punchlist walk anticipated June 2018. Phase 2 Rain Garden: Irrigation, planting material, backfill complete April 2018; Sign currently under review by BHC; Project completion and community event expected Summer 2018.

## BHC Project Status Report

Project Title	Grantee	Contract ID	Fund Source	Funds Allocated	Agreement Expiration	PROJECT STATUS
<b>Milton Green Street Project</b>	Mountains Recreation and Conservation Authority (MRCA)	BHC16002	Prop 1	\$745,000	8/31/2018	Final inspection by the City pending; Final walk-through and approval scheduled June 2018; Project close-out in-progress.
<b>Lower Ballona Creek Feasibility Study Project</b>	California Greenworks Inc.	BHC17002	Prop 1	\$258,000	12/31/2018	Survey and base-mapping began April 2018; LA County GIS boundaries, aerial and imagery data merge in progress; Hydrology analysis incl. for two (2) locations in-progress including the field geotechnical investigation. Stakeholder meeting # 1 was held April 2018; Meeting # 2 meeting scheduled for July 2018; Project completion expected December 2018.

**Baldwin Hills**  
**2017/18 Summary Sheet by Fund**

<u>As of 3/31/2018</u>	<u>PCA #</u>	<u>Original</u> <u>Appropriation</u>	<u>Remaining</u> <u>Appropriation</u>	<u>EXP + ENC</u>	<u>BALANCE</u>	<u>Encumber</u> <u>by</u>	<u>Liquidate</u> <u>by</u>
<b><u>ELPF - #0140, Support</u></b>							
2016 Budget Act Item 3835-001-0140	<b>10001</b>	\$ 357,000.00	\$ 357,000.00	\$ 264,497.64	\$ 92,502.36	06/30/17	06/30/19
<b><u>Prop 40 - #6029, Support</u></b>							
2016 Budget Act Item 3835-001-6029	<b>10005</b>	\$ 124,000.00	\$ 124,000.00	\$ 77,972.59	\$ 46,027.41	06/30/17	06/30/19
<b><u>Prop 84 - #6051, Support</u></b>							
2016 Budget Act Item 3835-001-6051	<b>10009</b>	\$ 129,000.00	\$ 129,000.00	\$ 71,519.93	\$ 57,480.07	06/30/17	06/30/19
<b><u>Prop 1 - #6083, Support</u></b>							
2016 Budget Act Item 3835-001-6083	<b>10006</b>	\$ 103,000.00	\$ 103,000.00	\$ 59,077.10	\$ 43,922.90	06/30/17	06/30/19
<b>Total Support Balance:</b>					<b>\$ 239,932.74</b>		
<b><u>Prop 1 - #6083, Local Assistance/ Capital Outlay</u></b>							
2017 Budget Act Item 3835-101-6083	<b>20008</b>	\$ 2,000,000.00	\$ 2,000,000.00	\$ -	\$ 2,000,000.00	06/30/20	06/30/22
2016 Budget Act Item 3835-101-6083	<b>20006</b>	\$ 2,000,000.00	\$ 2,000,000.00	\$ -	\$ 2,000,000.00	06/30/19	06/30/21
2015 Budget Act Item 3835-101-6083	<b>20004</b>	\$ 2,000,000.00	\$ 2,000,000.00	\$ 1,609,000.00	\$ 391,000.00	06/30/18	06/30/20
<b>Total Prop 1 Balance:</b>					<b>\$ 4,391,000.00</b>		
<b><u>Prop 40 - #6029, Local Assistance/Capital Outlay</u></b>							
2016 Budget Act Item 3835-101-6029	<b>20007</b>	\$ 6,025,000.00	\$ 6,025,000.00	\$ -	\$ 6,025,000.00	06/30/19	06/30/21
2015 Budget Act Item 3835-301-6029	<b>20005</b>	\$ 11,604,000.00	\$ 8,129,705.00	\$ 3,390,913.00	\$ 4,738,792.00	06/30/18	06/30/20
<b>Total Prop 40 Balance:</b>					<b>\$ 10,763,792.00</b>		
<b><u>Prop 84 - #6051, Capital Outlay</u></b>							
2015 Budget Act Item 3835-301-6051	<b>30004</b>	\$ 2,118,000.00	\$ 2,019,815.84	\$ 94,299.74	\$ 1,925,516.10	06/30/18	06/30/20
2014 Budget Act Item 3835-301-6051	<b>30003</b>	\$ 3,120,000.00	\$ 1,749,772.74	\$ 1,250,865.74	\$ 498,907.00	06/30/17	06/30/19
<b>Total Prop 84 Balance</b>					<b>\$ 2,424,423.10</b>		

**BOND CASH FUNDS**  
**(as of 3/31/18)**

2015 COMMERCIAL PAPER TE		CASH ALLOCATED	EXPENDITURES	BALANCE
	PROP 84:	\$3,277,819.00	2,982,329.61	\$295,489.39
	PROP 40:	\$6,524,161.89	3,444,077.48	\$3,080,084.41
	PROP 1:	\$1,051,000.00	320,568.21	\$730,431.79