



Baldwin Hills & Urban Watersheds Conservancy

Ad Hoc Committee

Friday, August 25, 2023





AGENDA

- Context of BH UWC Work Program
- Defining Equity
- Equity Challenges & Priorities (Open Discussion)
- Equity “Guiding Principles” for BH UWC
- Allies and Funders





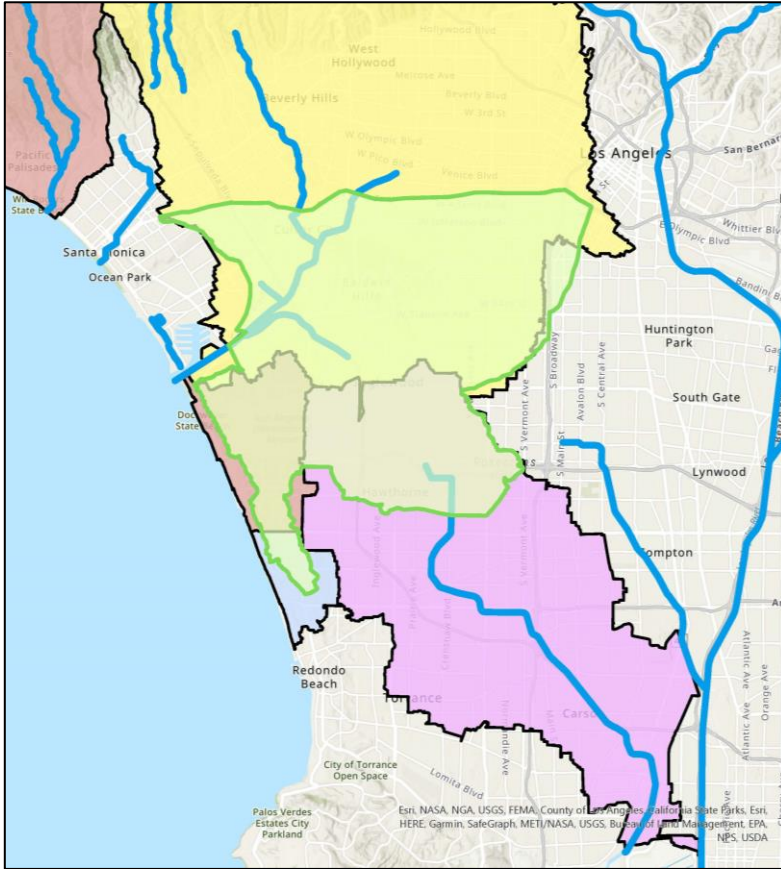
Ad Hoc Committee EQUITY AT CORE – *Governing Board Feedback*

Goal: Develop Equity “Guiding Principles” for the Baldwin Hills and Urban Watersheds Conservancy’s Watershed Improvement Plan

Purpose: Serve as Conservancy’s “North Star”, guiding the advancement of Conservancy’s mission and implementation of Watershed Resilience and Improvement Plan – With Equity at Core



Watershed Resilience and Improvement Plan



A Blueprint for Increasing Climate Resilience through the identifying of resilience building measures, efforts, designs and project priorities – that mitigate climate impacts on human and ecosystem health and that address equity and access concerns



A Strategy for Coordination Between Agency, Municipal Government, NGO and CBO efforts to increase/leverage collective resilience building value

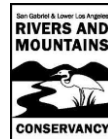


An Action Plan for seeking further funding (Legislation), a pathway to resource the next phase (Implementation)

Identifies State, Federal and Other funding sources



Support the Building of Lasting technical, human, and knowledge **capacity** to develop and implement multi-benefit watershed health and resilience building projects





Governing Board Member Feedback

Shocks & Stresses

Adaptive Capacity

What are the ways to cope with and respond to shocks & stresses?

Resilience Categories

What are the adaptation pathways?



Manage Water

Reduce Social Vulnerability

Develop Local Economies & Lands

Increase Access to Green & Blue Areas

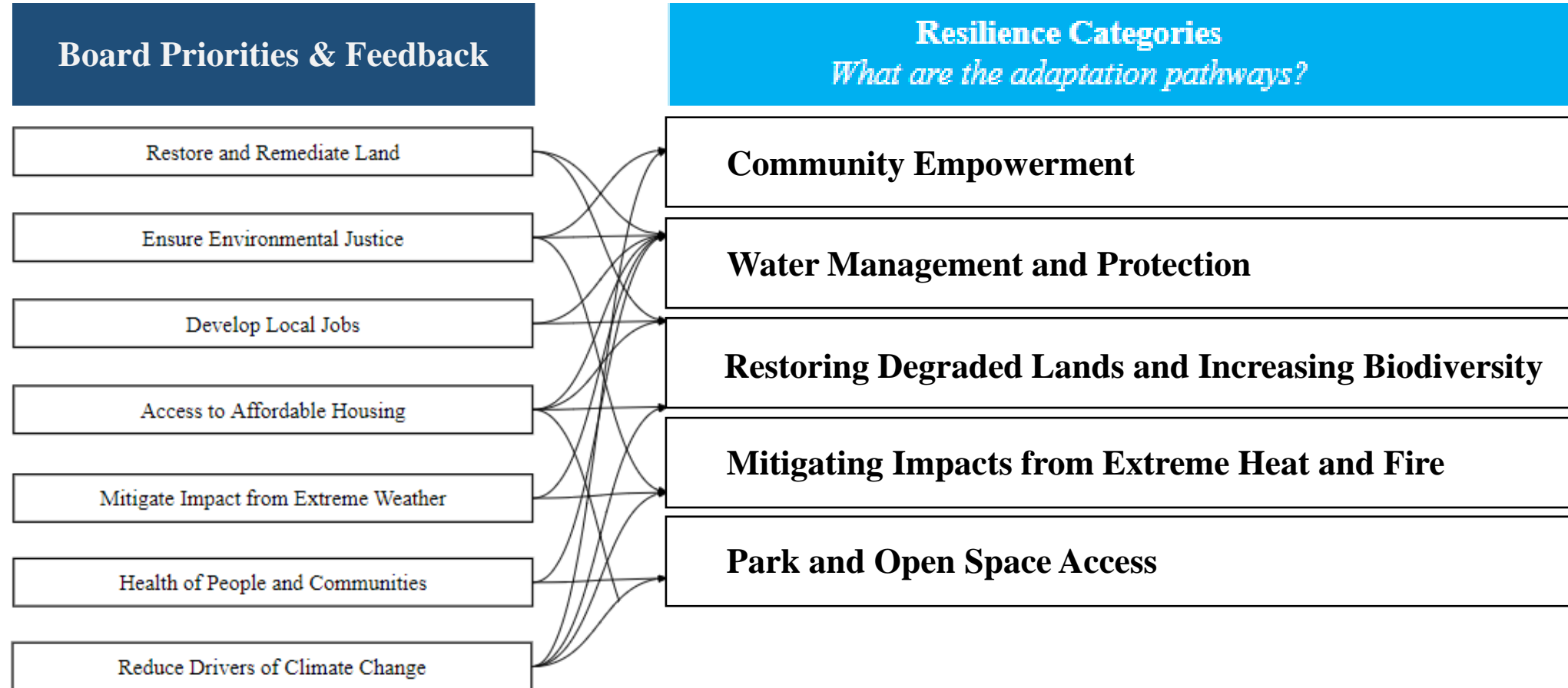
Protect from Extreme Heat

Improve Air Quality

Increase Transportation Connectivity

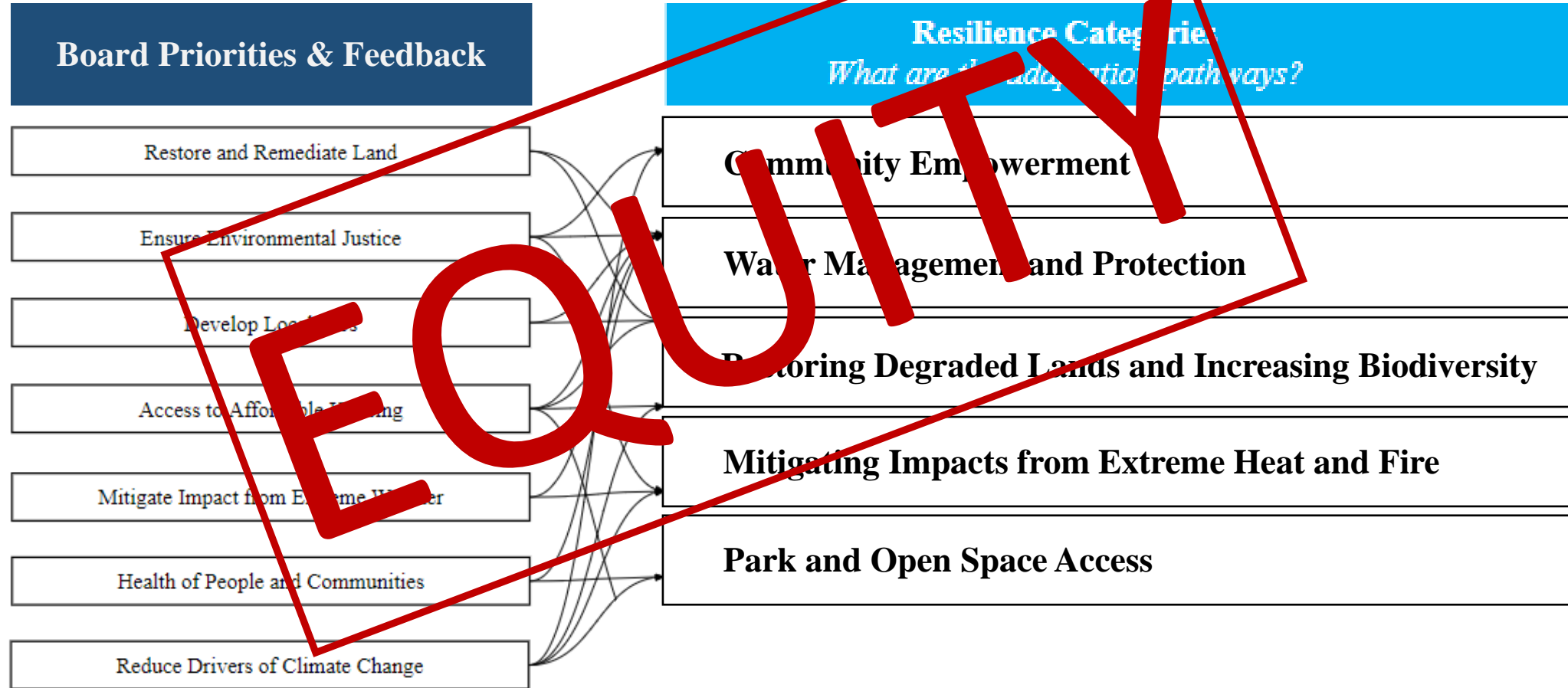


Revised Resilience Categories – *To Increase Climate Resilience*





Revised Resilience Categories – *To Increase Climate Resilience*



State of California
Ocean Protection Council

EQUITY PLAN

October 2022



What Others are Doing...

Equity: Equity refers to the fair distribution of resources, opportunities, and outcomes among individuals, groups, and/or communities. It focuses on ensuring that everyone has a chance in accessing resources and benefits within society, regardless of their background, identity, or circumstances, to achieve fair outcomes. Equity considers the fact that different people may require different levels of support to achieve similar outcomes due to historical disadvantages/exclusion or systemic barriers.

In essence, equity is a broader concept that encompasses fairness in various social and economic aspects, while environmental justice is a subset of equity that focuses specifically on the equitable distribution of environmental benefits and burdens. Both concepts are interconnected, as achieving environmental justice often requires addressing broader systemic inequities that contribute to environmental disparities. While both have similar goals of promoting fairness and equality, they differ in their specific focuses: equity centers on resource distribution, while environmental justice centers on mitigating environmental disparities and risks.

<https://opc.ca.gov/wp-content/uploads/2022/11/OPC-Equity-Plan-508.pdf>





ENVIRONMENTAL GRANTMAKERS ASSOCIATION

Why it Matters...



The positive well-being of people is inherently and inextricably linked with that of the living planet. Conversely, social inequality and impoverishment often go hand in hand with environmental degradation, climate harm and vulnerability. As a result, our work requires us to devote action to the systems of domination and oppression that affect people and the natural world upon which we depend.

There is a premise that questions of race and racism are not central to environmental grantmaking. That premise is false. Like all history, the history of the environmental movement - because it operates within our current cultures and systems - is infused with the deep-seated pain and injustice that stem from systemic racism, violence, and the kind of extractive economic proliferation that harms both people and planet.

Source: <https://ega.org/sites/default/files/page/attachment/EGA%20Racial%20Equity%20Point%20of%20View.pdf>



ENVIRONMENTAL GRANTMAKERS ASSOCIATION

EGA Racial Equity POV (Point of View) seeks to address the historic and systemic imbalance of power. We understand that white supremacy, colonization, and imperialism manifest themselves through the domination of natural resources, land, water, oceans, health and well-being. Lack of access to the outdoors, clean air and water, healthy environments, and the violent targeting of environmental protectors all impact BIPOC communities at disproportionate levels. For EGA, recognizing and naming past and current injustices requires redistributing power from those who have historically held access to wealth, decision-making, and who have set the rules of engagement. It requires the amplification of power by those who have been and who continue to be marginalized. Our vision for this work is rooted in centering and following Black, Indigenous, People of Color (BIPOC) communities and resourcing them to lead.





Activity 1: Definition of Equity

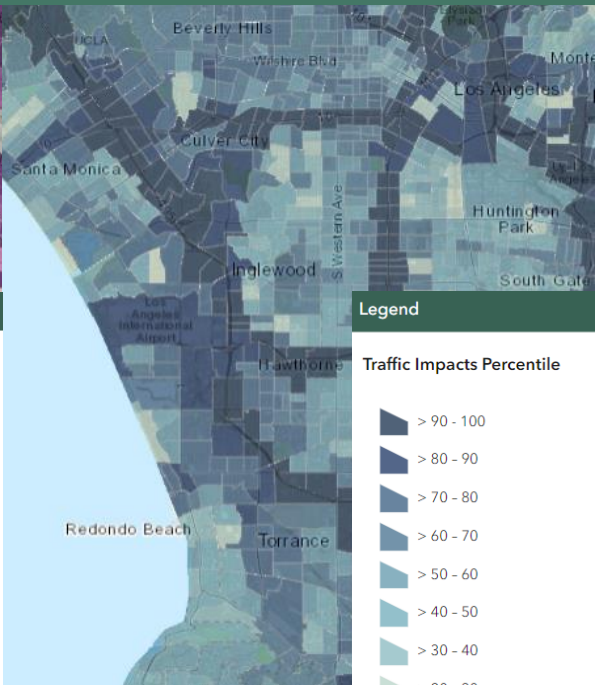
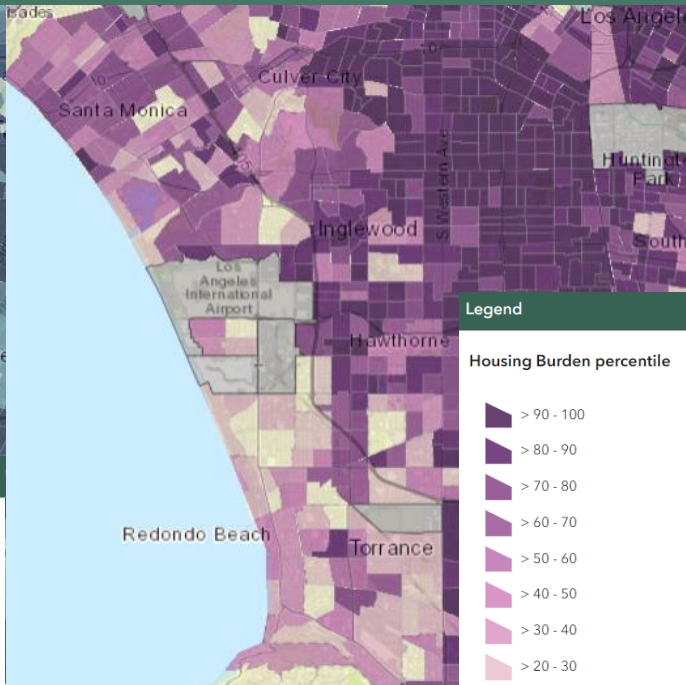
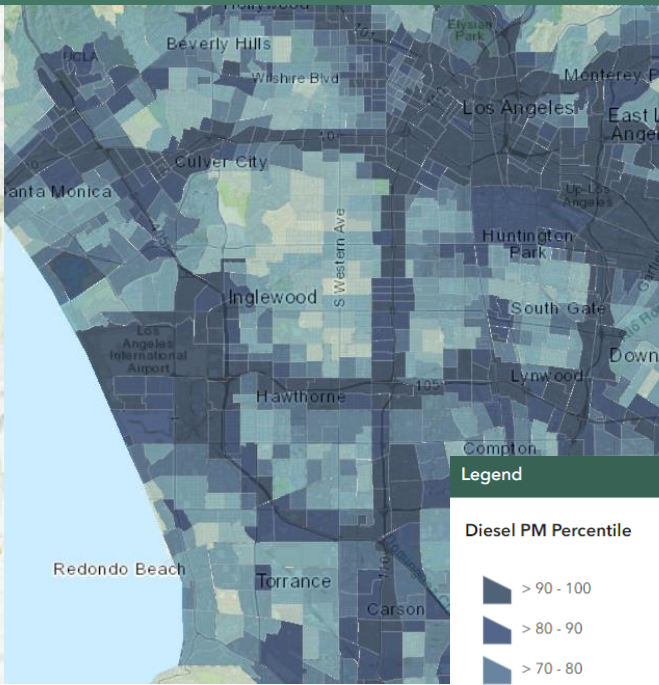
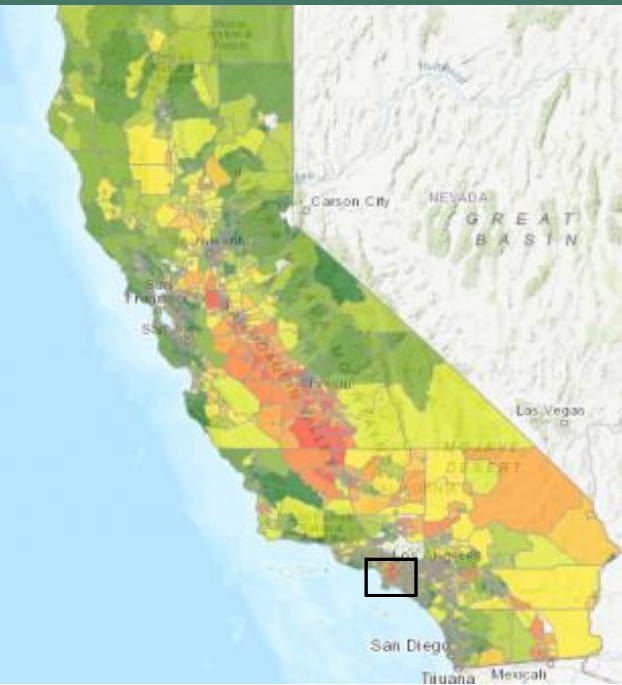
Question 1. *Does the Conservancy align with the OPC & EGA POV?*

Question 2. *Does anything need to be added or removed/replaced?*

The Baldwin Hills and Urban Watersheds Conservancy defines Equity as...



Informing Conservancy Equity Actions – CalEnviroScreen 4.0



Source: <https://experience.arcgis.com/experience/ed5953d89038431dbf4f22ab9abfe40d/page/Indicators/?views=Housing-Burden>

Pollution Burden

Pollution Burden	Ozone	PM2.5	Diesel Particulate Matter	Drinking Water Contaminants
Pesticide Use	Toxic Releases from Facilities	Traffic Impacts	Cleanup Sites	Children's Lead Risk from Housing
Traffic Impacts	Cleanup Sites	Groundwater Threats	Hazardous Waste	Impaired Waters
			Solid Waste Sites	

Population Characteristics

Asthma	Cardiovascular Disease	Low Birth Weight	Education
Housing Burden	Linguistic Isolation	Poverty	Unemployment



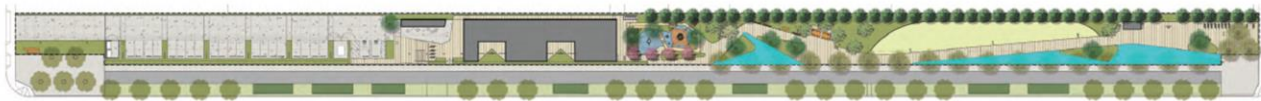


Watershed Resilience and Improvement Plan

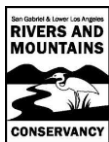
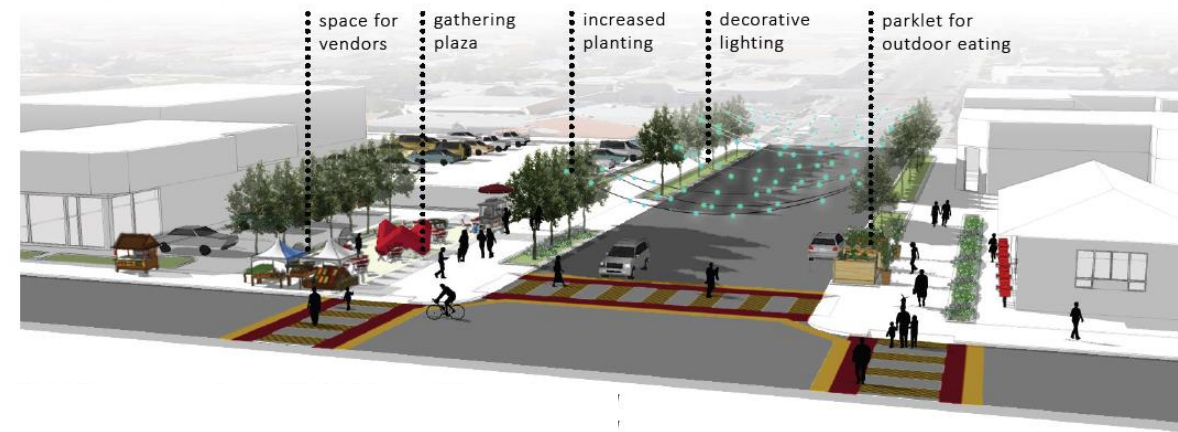
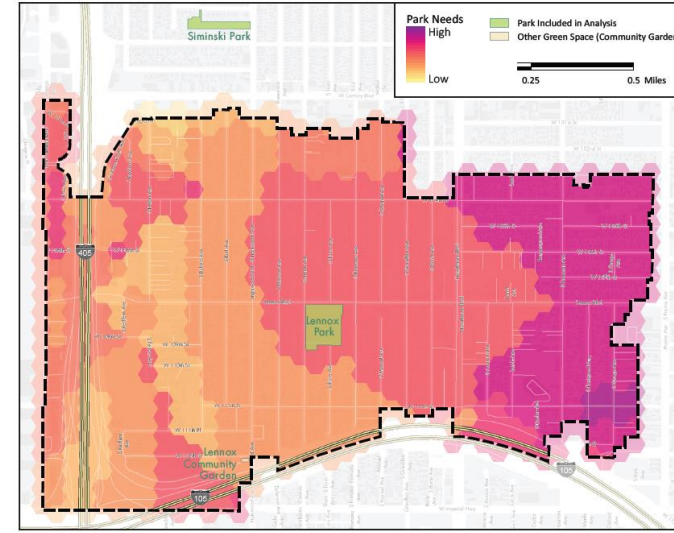
CONCEPTUAL FREEWAY POCKET PARK



- trail connection to Metro station
- open field
- playground
- shade
- exercise station
- periphery path
- small skate park
- trailhead

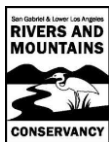


GREENING LENNOX THROUGH PARTNERSHIPS





Climate Resilience to Our Urban Watersheds & Communities





Activity 2: Equity Actions for Each Resilience Category

Resilience Categories

What are the adaptation pathways?

Community Empowerment

Water Management and Protection

Restoring Degraded Lands and Increasing Biodiversity

Mitigating Impacts from Extreme Heat and Fire

Park and Open Space Access

Equity Actions & Priorities



Activity 3: Equity “Guiding Principles” for BH UWC

Today’s Final Goal. *Develop Equity Guiding Principles for BH UWC*

Through the Conservancy’s...



Allies and Funders

Urban Conservation Planning Survey:

<https://forms.office.com/pages/responsepage.aspx?id=QYvkSjcBmUWGYfxkH-d76gUo8H4EkUBCs2rVWpy4JPIUNkRVNkFGOEIIMzZHUFNPSk1VSkxYS1cxMy4u>

Watershed Resilience and Improvement Plan:

Daniel G. Hernandez – Project Manager Daniel.Hernandez@bhc.ca.gov



@Urban_Watersheds_Conservancy