

BALDWIN HILLS CONSERVANCY NOTICE OF PUBLIC MEETING

The meeting of the Baldwin Hills Conservancy (BHC) will be held
Friday, October 23, 2015, 10:00 AM - 12:00 PM
Kenneth Hahn State Recreation Area, Community Center
4100 South La Cienega Blvd. Los Angeles, CA
(323) 298-3660

Teleconference Location

Natural Resources Agency
1416 Ninth Street, 13th Floor, Room 1305
Sacramento, California 95814

10:00 AM - CALL TO ORDER - Sara Amir, Chair

MEETING AGENDA

PUBLIC COMMENTS ON AGENDA OR NON-AGENDA ITEMS SHOULD BE SUBMITTED BEFORE ROLL CALL

Public Comment and Time Limits: If you wish to speak on an agenda item, please complete a speaking card available near the door to the meeting room. Individuals wishing to comment will be allowed up to three minutes to speak. Speaker times may be reduced depending upon the number of speakers.

1. Roll Call - Avril LaBelle, Executive Secretary
2. Approval of Minutes (July) - Sara Amir, Chair
3. Public Comments - Sara Amir, Chair
4. Introduction of BHC Proposition 84 Park and Recreation Specialist, Noa Rishe Kahlili
5. Consideration of a Resolution Authorizing a Grant of BHC Proposition 84 Funds, in an Amount not to Exceed \$336,143.00, to the City of Culver City for the Ballona Creek Connection Trail Segment of Park to Playa - David McNeill, Executive Officer
6. Discussion and Possible Action on BHC Officer Nominations in Preparation for Elections to be held at the December 4, 2015, Board Meeting – Sara Amir, Chair
7. Presentation on the Local Community Engagement Process for the L.A. Countywide Parks Needs Assessment – Gail Krippner, Grant Program Manager and David McNeill, Executive Officer
8. Executive Officer Report: Administrative Update, Project Status Update, Legislative Update - BHC Staff Representatives
9. Board Member Announcements or Proposed Agenda Items for Future Meetings - *Next meeting is tentatively scheduled for **December 4, 2015**.*
10. Closed Session - Conference to Discuss Negotiations and Strategies for the Following Properties: 4221-024-017 and 4221-024-018, Agency Negotiator: Karly Katona, Negotiating Party: Mr. Steve Zipp.

Pursuant to Government Code Sections 54956.8, 54956.9, the Conservancy may hold a closed session to discuss and take possible action regarding instructions on real estate negotiations, on personnel matters and/or to receive advice of counsel on pending or potential litigation. Confidential memoranda related to these issues may be considered during such closed session discussions.

ADJOURNMENT

In accordance with the Americans with Disabilities Act of 1990, if you require a disability related modification or accommodations to attend or participate in this meeting, including auxiliary aids or services, please call the Conservancy at (323) 290-5270 at least five days prior to the meeting. For more information about the Conservancy, you may visit our website at www.bhc.ca.gov

BALDWIN HILLS CONSERVANCY

5120 West Goldleaf Circle, Suite 290

Los Angeles, CA 90056

Phone: (323) 290-5270

Fax: (323) 290-5276

**PUBLIC MEETING MINUTES
BALDWIN HILLS CONSERVANCY**

Friday, July 31, 2015

Call to Order

A public meeting of the Baldwin Hills Conservancy (BHC) was assembled at 10:00 a.m. on Friday, July 31, 2015, at the Kenneth Hahn State Recreation Area Community Center, located at 4100 South La Cienega Boulevard, Los Angeles, CA 90056.

I. - Roll Call

Members Present: Sara Amir, Allan Boodnick, Lloyd Dixon, Yolanda Gorman, Russ Guiney, Eraina Ortega, Starlett Quarles, Craig Sap, Sam Schuchat, Ana Straabe *(Arrived after roll call.)*

Staff Present: David McNeill, Executive Officer; Gail Krippner, Grant Program Manager; Avril LaBelle, Executive Secretary, David Edsall, Supervising Deputy Attorney General. *(Items III and V were heard prior to voting.)*

II. - Approval of Minutes (May) – Sara Amir, Chair

The Chair called for a motion to approve the minutes. Member Boodnick so moved, Member Sap seconded the motion, and a roll call vote was taken – 6 ayes, 0 nays, 1 abstention, Minutes approved. (Quorum was reconfirmed prior to conducting vote.)

III. - Public Comments – Sara Amir, Chair

Public comment was invited. Nine comment cards were received and addressed under item VI.

IV. Consideration of a Resolution Amending Agreement #BHC13003 with University of Southern California (USC) for the Baldwin Hills Biota Update – David McNeill, Executive Officer

David McNeill – Professor Longcore has received a promotion at USC. We are nearing the final stages of the Biota Study and need to place it on hold for 12 months so that Professor Longcore can address his other duties at USC. The study will still continue. If the board approves this amendment, we will gain a number of months of observations from the iNaturalist Website, and additional habitat modeling.

The Chair called for a motion. Member Boodnick made a motion to approve the amendment, Member Sap seconded the motion, and a roll call vote was taken – 7 ayes, 0 nays, 0 abstentions, Approved.

V. - Update on the Development of Stoneview Nature Center Design and Construction Documents - Matt Feldhaus, Project Manager, L.A. County Department of Public Works

Mr. Feldhaus gave an informative presentation *(Please see attached slides for detailed information.)* Mitigated negative declaration complete; design-builder has been selected; demolition and site clearance complete with a; 90% construction documents completed June 15, 2015; August 2015 – Plan check/permit complete; September 2015 – Mobilization and construction start - construction will be 8:00 – 5:00, Monday through Friday, no weekend or holiday construction, no excessive noise, and no street parking; April 2016 – Substantial completion; July 2016 – Nature Center complete and open to the public; There will be no vehicle access from La Cienega. The county is working on a separate project called Park to Playa; which will link Kenneth Hahn Park, across La Cienega with a pedestrian bridge, leading to a walking trail that allows you to enter the Stoneview facility. One year after the facility is open there will be a traffic study to mitigate any issues.

Mr. Feldhaus - Stoneview can be viewed as a more passive nature center to be enjoyed by the public, and described the project as three project concepts:

Healthy Food: Ways to teach the community on how to grow their own food and create a healthy sustainable lifestyle – project has fruit trees, community gardens, berries, and an outdoor demonstration kitchen for cooking and agricultural classes.

Healthy Environment and Watershed: Building is sustainable, low impact to environment, has natural day lighting, Bioswales, Riparian Corridors, pollination trails, native plants, and environmentally sustainable landscaping; (*project is certified as – “Leed Silver,”*)

Healthy Mind/Body/Community: Site has fitness activities, walking trail with mile markers, outdoor exercise equipment, balance beams, gathering places, outdoor classrooms, and yoga deck. Interpretive signage and a phone application are being developed for interpretive portions of the project. Interpretive information will speak to healthy watershed concepts, water conservation, recycled materials, native plants, main garden, observation deck, outdoor classroom, and food orchards. There is also a neighborhood photo wall; a place to engage the community with events that bring the community together - fruit festival, jamming festival, fruit tree adoption, salsa event, and lemonade stand; a place where the community can share recipes and learn from one another; a place to learn about California agricultural history– pomegranates, Missions Figs, Haas Avocados;

VI. Presentation on Coyote Management Protocol for L.A. County - Ken Pellman, Public Information Officer, L.A. County Department of Agricultural Commissioner - Integrated Pest Management Division

Mr. Pellman - Coyotes have always been here; we have to learn to live alongside them, and protect human life; coyotes are a benefit to the environment keeping the ecosystem in balance; there has not been a fatality in the county since 1980/1981; coyote attacks are rare as coyotes usually stay away from people. Mr. Pellman stated as with the instance in 1980, attacks happen when coyotes are conditioned to associate people with food; people are feeding the coyotes or leaving food out for them; coyotes are territorial and will go back to where they have found food - Do not feed or leave food out for coyotes; a coyote is a wild animal, and will find food on its own.

Mr. Pellman - a problem with coyote can be described as a coyote that acting aggressive and has no fear of humans. If in an unincorporated area, and you have a problem with a coyote you can call **(626) 575-5462**. If you are in a city and you have a problem with a coyote you call your city. It is illegal to feed coyotes; illegal to kill coyotes; relocation of a coyote is illegal; and trapping is a last resort, and means the coyote will be released or euthanized. Following suggestions:

- Keep garbage cans closed and secured;
- Do not leave filled plastic trash bags out overnight
- Keep pets indoors overnight
- Pick up fallen fruit and cover compost piles
- Put away bird feeders at night as they can attract rodents and other coyote prey
- Clear brush/weeds from your property as they can attract and hide other animals and coyotes
- If you can, install a wall or a fence as permitted

If in a park and you see a coyote:

- Pick up your small pet
- Make eye contact with coyote
- Look and sound as big and authoritative as possible to scare the coyote away. Some people use walking sticks they bang on the ground, or rocks in a can to make a loud noise, in addition to shouting, clapping, yelling loudly, arm waiving, bright lights, throwing stones or small objects;
- Do not turn your back, face the coyote and back away slowly.
- If anyone is attacked, call 911.

Professor Longcore - The National Park Service has radio-collared two coyotes. There are no conflicts with those urban coyotes. This happens when the community works together to reduce the food sources to coyotes. This includes pet food left out overnight, food left out where people are feeding feral cats, and not picking up fallen fruit in your yard. Also, we do not have any cases of rabid coyotes here in urban Los Angeles. The California Department of Fish and Wildlife has a program called Wildlife Watch. That program has volunteers and training sessions designed to get people out into the community, and work together to figure out how to deal with coyote issues. (*Professor Longcore can be reached at (310) 247-9719 longcore@usc.edu*)

Comments & Questions:

Where do coyotes make their dens? Answer - Coyotes don't necessarily need a den. They can hide under brush.

Did you say that there was an uptick in coyote sightings? Answer - No, if there are a lot of posted missing pet notices in an area that can be a sign of coyote sightings.

There seems to be a lot of people reporting coyote sightings. What are neighbors or residents doing here that have caused this to happen? Answer - One can only speculate. There have been other cases where people have fed coyotes and that caused the coyotes to become reliant on people and equate people with food. If people are noticing sightings, sightings are not necessarily the problem. If they are noticing aggressive behavior and a coyote is approaching them and clearly not afraid of humans then that is a problem. Coyotes are normally afraid of people.

I think social media has brought attention to coyotes that have been here for a long time and social media keeps circulating that same information making folks think this is something new. Using social media to keep the community updated and informed on how to properly handle coyotes is important.

Mr. McNeill – I believe the State can help coordinate with the county and then bring in wildlife experts from the State and conduct that training as recommended. We have members of the county, Culver City and Los Angeles City on our board; we will most likely lead the conversation. Our agency does not enforce or regulate any related policy, the county and/or the State Fish and Wildlife Agency will be handling that. We can however certainly work on the coordination and needs for presentations.

VII. Consideration of a Resolution in Recognition of Director Russ Guiney for Over 16 years of Service in the Baldwin Hills Parklands - Sara Amir, Chairman

David McNeill – Director Russ Guiney has helped developed the Baldwin Hills Park Master plan. He has been working on the expansion of the parklands for over 16 years in several leadership positions. In honor of Russ' many years of service, the board has put forth a resolution to designate a trail/trailhead somewhere in the Baldwin Hills Parklands with his name on it.

The Chair called for a motion. Member Boodnick made a motion to approve the resolution, Member Gorman seconded the motion, and a roll call vote was taken – 7 ayes, 0 nays, 0 abstentions, Approved.

The BHC Board, community members, and Supervisor Mark Ridley-Thomas' office expressed their sincere appreciation to Director Russ Guiney for his commitment, leadership, dedication, and vision. (Best wishes on your retirement!) The BHC presented Director Guiney with his very own trail sign - The inscription reads – "Russ Guiney Trail." (Trail sign to be installed in the near future)

VIII. Executive Officer Report: Project Status Update, Administrative Update, Legislative Update - BHC Staff Representatives

Project Status Update

Milton Street – The Park is substantially complete. We had a punch-list walkthrough of the site with the contractor and pointed out a few more changes to be made. We will have a punch list follow-up next week to check on the progress. It should be 100% complete by the end of August. We hope to have an opening sometime during September/October.

Stoneview Nature Center – We are meeting approximately every two weeks. The 90% constructions documents were delivered in July and all partners sent back their comments. We had some good comments on the interpretive information going into the nature center in terms of how it's written; what does it say; what story it tells. This same information will also be going into the phone app.

Stocker Corridor Trail – The Stocker Corridor section of the Park to Playa Trail is going well. We anticipate the opening to be in November.

Hetzler Road – Culver City filled the gap in funds to finish the pedestrian path up Hetzler Road at the Scenic Overlook. We are proud of all of the stakeholders that have come together in partnership to complete this project. *(For details see attachment #1 - letter from the City of Culver City dated June 24, 2015)*

USC – USC is conducting the study so that we can update our information on native plants and animals in the Baldwin Hills.

Loyola Marymount (LMU) – Surveyors are out there conducting the second round of Parklands User Survey. We are expecting a report on the data in the fall.

Fiscal Update

We will be interviewing for the Park and Recreation Specialist - Proposition 84, and anticipate hiring. We are also looking at hiring a Staff Services Analyst - Proposition 1. The countywide survey is coming up. L.A. County will be surveying for open space needs. We will be rolling out our Prop 1 on our website next week. *(Please see attachment #3 Baldwin Hills 2014/2015 Summary Sheet by Fund; and #4 Bond Cash Funds.)*

Legislative Update

AB446 has passed the Senate Resources Committee and was unanimously approved. The final vote is now with the Senate Appropriations Committee.

IX. Board Member Announcements or Proposed Agenda Items for Future Meetings

The BHC welcomes - David Edsall, Deputy Attorney General (DAG) State of California Department of Justice.

Member Guiney – We are in the middle of the first ever comprehensive countywide park needs assessment, and have almost 200 community workshops coordinated through the city. We aim want our community to tell our committee what they need - parks, more playgrounds here, open space there. Next May we plan to pull together the data for this comprehensive countywide study - including all of the information from other cities, other park and recreation providers – State Parks, National Parks, this Conservancy and put together a report on what the needs are. Part of this will allow us to focus on a possible funding measure for the 2016 ballot should the board decide to do that. When Proposition A expired, the Regional Park and Open Space District immediately lost 54 million/year to fund park projects countywide. This left us with a large gap. This money was not for salaries it was to go toward building projects and maintaining those projects.

Member Schuchat – The Coastal Conservancy Prop 1 solicitation is now on our website. Prop 1 monies are now available at www.scc.ca.gov

The next board meeting is tentatively scheduled for **September 11, 2015.*

X. - Closed Session - Conference to Discuss Negotiations and Strategies for the Following Properties: 4221-024-017 and 4221-024-018, Agency Negotiator: Karly Katona, Negotiating Party: Mr. Steve Zip.

Closed session postponed.

*Pursuant to Government Code Sections **54956.8, 54956.9**, the Conservancy may hold a closed session to discuss and take possible action regarding instructions on real estate negotiations, on personnel matters and/or to receive advice of counsel on pending or potential litigation. Confidential memoranda related to these issues may be considered during such closed session discussions.*

ADJOURNMENT

There being no more business brought before the board, the meeting was adjourned at 11:41 a.m.

Approved:

Sara Amir, Chair

Date:

BALDWIN HILLS CONSERVANCY

5120 West Goldleaf Circle, Suite 290
Los Angeles, CA 90056
Phone: (323) 290-5270
Fax: (323) 290-5278
www.bhc.ca.gov

Memorandum

To: Governing Board

From: David McNeill, Executive Officer

Date: October 23, 2015

Re: Item 4: Introduction of BHC Proposition 84 Park and Recreation Specialist, Noa Rishe Khalili

Background:

Noa Rishe Khalili has joined the Baldwin Hills Conservancy as a Park and Recreation Specialist. Noa's duties will include the management of the BHC Proposition 84 grant program, interpretation and policies focused on clean water, parks and coastal protection.

Noa is a natural resource biologist with expertise in native and exotic plants, wildlife, GIS mapping, and project management. In her 6 years of service at the California State Parks in the Santa Monica Mountains, Noa managed and monitored numerous restoration and enhancement projects including Nicolas Flats ADA trail installation, Sepulveda Adobe historic building restoration, and Malibu Lagoon wetland restoration. She holds a Bachelor of Science degree in Biology from the University of California – Los Angeles.

Noa will use her knowledge of Arc GIS mapping technology to create accurate representations of parkland resources using satellite imagery, field-gathered GPS data, and datasets from LA County and California State Parks. This data will be useful for planning and maintaining current and future Prop 84 projects per the Baldwin Hills Master Plan.

Noa's background also includes significant cultural diversity which she will use to improve communication with Baldwin Hill's partners and constituents. Noa speaks fluent Russian and can communicate to varying degrees in Farsi, Hebrew, and Spanish.

She is knowledgeable about small business operations through her work with her family's sales, marketing and business consulting company.

Noa joins the Baldwin Hills Community to do her part in facilitating projects that increase and connect open space for the benefit of park users and the natural environment.

BALDWIN HILLS CONSERVANCY

5120 West Goldleaf Circle, Suite 290
Los Angeles, CA 90056
Phone: (323) 290-5270
Fax: (323) 290-5278
www.bhc.ca.gov

Memorandum

To: Governing Board

From: David McNeill, Executive Officer

Date: October 23, 2015

Re: Item 5: Consideration of a Resolution Authorizing a Grant of BHC Proposition 84 Funds, in an Amount not to Exceed \$336,143.00, to the City of Culver City for the Ballona Creek Connection Trail Segment of Park to Playa

Recommendation: Staff recommends approving Resolution 15-03, authorizing the Executive Officer to enter into an agreement with Culver City for an amount not to exceed \$336,143.00 for the Ballona Creek Connection Trail Segment of Park to Playa.

Background: The City of Culver City Parks, Recreation and Community Services Department submitted a Prop 84 grant application for the Parkland's most western segment of Park to Playa (see Attachment 1). This segment was conceived and planned in collaboration with the City's Public Works Department, the Mountains Recreation and Conservation Authority, and California State Parks. If awarded, the grant would fund Segment 7 connecting the Ballona Creek Bike Path to Culver City Park beginning at the boundary of the Baldwin Hills Scenic Overlook Western Gateway. The project would achieve the following objectives: 1) improve the existing trail and remove barriers along the upper ball fields within Culver City Park; 2) create ADA accessible pedestrian passageways consistent with Park to Playa; 3) connect and improve the existing Interpretive Boardwalk Trail; 4) incorporate a bicycle path with lane markings (sharrows) to establish a bicycle thoroughfare from the upper part of the park to Duquesne Avenue; 5) complete the bicycle and pedestrian connection to the Ballona Creek Bike Path at Duquesne Avenue entrance; 6) install the appropriate way finding, warning, regulatory and object markers consistent with the Park to Play plan guidelines.

A project match of \$135,360 (29%) has been provided by the City pursuant to a capital improvement line item in the 2015/16 general budget, along with in-kind administration and project management. The total project amount is \$471,403.

A review of the project application yielded the following top four goals of the Baldwin Hills Park Master Plan and the BHC's Strategic Plan: 1) providing for public access and entryways; 2) emphasizing connections between existing parks, trails, and urban streams; 3) increasing active recreation opportunities for underserved communities; 4) creating or implementing a comprehensive trail system.

Ballona Creek Connection Trail Segment of Park to Playa

City of Culver City

PROP 84 LOCAL ASSISTANCE GRANT PROJECT REQUIREMENTS

(For use in the determination of the priority of Conservancy grants and projects authorized under Division 22.7 of the California Public Resources Code)

STANDARD REQUIREMENTS

a. Located within the BHC territory

Site map and narrative identify project is within the Conservancy territory and boundaries as described in PRC 32553 (a).

b. Promotion of the Conservancy's statutory programs and purposes

PRC 32569 (a): Conservancy may award grants to local public agencies for the purposes of this division

PRC 32565.5 (b): Conservancy shall give priority to related projects that create expanded opportunities that provide recreation, aesthetic improvement, and wildlife habitat in the Baldwin Hills area.

c. Consistency with purposes of Prop 84 statute

PRC 75060: Bond funds are available for projects to promote access to and enjoyment of the coastal resources of the State; and to prevent contamination and degradation of coastal waters and watersheds

d. Consistency with the Baldwin Hills Park Master Plan

Pedestrian Access and Trail Connections, page 46: "Key public access points would allow easy connections to major public trails and access into the park."

Park Concept Description: One Big Park, page 51: "Visitor serving facilities are planned for the northwestern (Baldwin Hills Scenic Overlook) to provide important public access and educational opportunities and to take advantage of one of the most spectacular views in all Los Angeles of the Pacific Ocean, Santa Monica Bay, Los Angeles Basin and the surrounding mountains."

e. Greater-than-local interest

With nearly 3 million Californians residing in a five-mile radius of the Baldwin Hills territory (according to the 2000 census data), and over 58 million trip visits to the Los Angeles area annually by Californians alone, the land resources in the Baldwin Hills represent an extraordinarily unique value to the entire state.

f. Demonstrated expertise in the proposed program area

The City of Culver City Public Works Department has undertaken similar projects within its jurisdiction including street medians, traffic signals, bicycle lanes, landscaping and parking facilities.

ADDITIONAL PRIORITIES

g. Leverage

The applicant is providing a 29% match (above the 25% requirement) utilizing Culver City's Capital Improvement Program Budget and in-kind services totaling \$135,260. This match would leverage Prop 84 funds within the BHC's territory and demonstrate the BHC's capacity to partner with local public agencies.

h. Urgency

This project addresses active bicycle-foot traffic-vehicle conflicts along its proposed route. The sooner these conflicts are resolved, the lower the probability that the conflicts will result in loss or injury to users of the road and trail. In addition, the available matching funds from The City of Culver City are time sensitive.

j. Resolution of more than one issue

This project resolves multiple issues by improving access to the Scenic Overlook Culver City Park and Ballona Creek; encouraging non-vehicular travel; and upgrading existing facilities. The proposal also allows for integration into current and future improvements proposed for the Duquesne Avenue corridor.

k. Conflict Resolution

As described above, this project resolves current conflicts between various groups of Park to Playa Trail users (bicycle, pedestrian, vehicular) as well as traffic issues along Jefferson Blvd and Duquesne Ave. These issues will be resolved through separate trails for bikes and hikers as well as improved road markings, signage, and street crossings.

l. Readiness

Culver City is prepared to initiate the project as early as June, 2016 with construction beginning in one year. Adequate financial resources are currently at the department's disposal. The existing working relationship with California State Parks will provide the proper foundation for efficacy in project implementation.

m. Realization of prior BHC goal

The project creates more comprehensive trail access at the Baldwin Hills Scenic Overlook and Culver City Park. This segment represents the connecting portion of the Parklands to the Ballona Creek Bike Path. Building on the historic link between the Ballona Creek and the Baldwin Hills, the proposed improvements are a natural evolution towards the community's vision as recommended in the Baldwin Hills Park Master Plan.

n. Cooperation

The Mountains Recreation and Conservation Authority (MRCA) will provide way-finding signage to clearly identify Segment 7 as a portion of the Park to Playa Trail. Non-profit partners including Ballona Creek Renaissance and Walk n-Rollers will provide input and public awareness on project implementation.

BALDWIN HILLS CONSERVANCY (BHC)

RESOLUTION 15-03

RESOLUTION AUTHORIZING A GRANT IN AN AMOUNT NOT TO EXCEED \$336,143.00 OF BHC PROP 84 FUNDS TO THE CITY OF CULVER CITY FOR THE PARK TO PLAYA BALLONA CREEK CONNECTION

WHEREAS, under Division 22.7 of the California Public Resources Code, the Baldwin Hills Conservancy was created to acquire open space and manage public lands within the Baldwin Hills area and to provide recreation, restoration and protection of wildlife habitat within the Conservancy territory; and

WHEREAS, Public Resources Code 32569 (a) states the Conservancy may award grants to local public agencies for the purposes of its division; and

WHEREAS, the City of Culver City is a local public agency incorporated as a city in 1917; and

WHEREAS, the City of Culver City adopted Resolution 2015-R078 approving the submission of an application for local support from the BHC Prop 84 funds; and

WHEREAS, the objectives of the project are consistent with the funding source and grant requirements adopted by the BHC under resolution 10-06 and;

WHEREAS, pursuant to Public Resources Code 75060, funds from the Safe Drinking Water, Water Quality and Supply, Flood Control, River and Coastal Protection Bond Act of 2006 are available for projects in the Baldwin Hills and Ballona Creek Watershed to promote access to and enjoyment of the coastal resources of the State; and

WHEREAS, as under Public Resources Code 15333 this action is exempt from the environmental impact requirements of the California Environmental Quality Act (CEQA); now

THEREFORE BE IT RESOLVED, THE BHC GOVERNING BOARD:

1. AUTHORIZES A MATCHING GRANT IN AN AMOUNT NOT TO EXCEED \$336,143.00 OF BHC PROP 84 FUNDS TO THE CITY OF CULVER CITY FOR THE PARK TO PLAY BALLONA CREEK CONNECTION
2. ADOPTS THE RECOMMENDATIONS DATED OCTOBER 23, 2015 FOR THIS ITEM
3. APPOINTS THE EXECUTIVE OFFICER, AS AGENT TO CONDUCT ALL NEGOTIATIONS, EXECUTE AND SUBMIT ALL DOCUMENTS INCLUDING, BUT NOT LIMITED TO AGREEMENTS, PAYMENT REQUESTS, AND CERTIFICATIONS WHICH MAY BE NECESSARY FOR THE COMPLETION OF THE AFOREMENTIONED PROJECT(S)

Passed and Adopted by the Board of the
BALDWIN HILLS CONSERVANCY

on _____, 2015.

Sara Amir
Chair

ATTEST: _____
Christina Bull-Arndt
Deputy Attorney General



Parks, Recreation & Community Services Department
4117 Overland Avenue, Culver City, California 90230
(310) 253-6655



October 15, 2015

David McNeill, Executive Officer
Baldwin Hills Conservancy
5120 Goldleaf Circle, Suite 290
Los Angeles, CA 90056

Subject: Grant Application for Culver City / Park to Playa – Ballona Creek
Connection Project (Park to Playa Trail Segment 7)

Dear Mr. McNeill:

I have enclosed the City of Culver City's application for the Culver City / Park to Playa – Ballona Creek Connection Project (Park to Playa Trail Segment 7) through the Baldwin Hills Conservancy's Proposition 84 Grant Program.

Please feel free to contact me at (310) 253-6668 if you have any questions or need additional information.

Respectfully submitted,

Patricia A. Mooney

Senior Management Analyst
Parks, Recreation & Community Services Dept.
City of Culver City
310-253-6668

Enclosure

State of California – The Natural Resources Agency
BALDWIN HILLS CONSERVANCY
 APPLICATION FOR LOCAL ASSISTANCE GRANT

\$336,043.00

PROJECT NAME Culver City/Park to Playa – Ballona Creek Connection (Park to Playa Segment 7)	GRANT AMOUNT \$471,403.00 <hr/> ESTIMATED TOTAL PROJECT COST (State Grant and other funds)
GRANTEE (Agency, address-incl. zip-code and email) City Treasurer's Office City of Culver City 9770 Culver Blvd. Culver City, CA 90232 Administrator: Patricia.Mooney@CulverCity.org	COUNTY Los Angeles
	NEAREST CITY City of Culver City
	PROJECT ADDRESS 9910 Jefferson Blvd., Culver City, CA 90232
	NEAREST CROSS STREET Duquesne Ave.
	SENATE DISTRICT NO. [REDACTED]
	ASSEMBLY DISTRICT NO. [REDACTED]

Grantee's Representative Authorized in Resolution:

Name (Type) John Nachbar	Title City Manager	Phone (310) 253-6000
Person with day-day responsibility for project (if different from authorized representative):		
Name (Type) Sammy Romo	Title Associate Engineer	Phone (310) 253-5619

Brief description of project:

The proposed project will connect the Baldwin Hills Overlook/Culver City Gateway to Ballona Creek by creating/completing an ADA compliant passageway and an alternative trail route for bicycles that converge at Duquesne Avenue portal of Culver City Park and continue to the Duquesne Avenue entrance to the Ballona Creek Bike Path.

For Dev. Projects Land Tenure-Project is: **41.55** acres: For Acquisition projects-Projects will be _____ acres

☒ Acres owned in fee simple by Grant Applicant _____ Acquired in fee simple by Grant Applicant

_____ Acres available under a _____ year lease _____ Acquired in other than fee simple (explain)

_____ Acres other interest (explain) _____

I certify that the information contained in this project application form, including required attachments, is accurate.

Signed



Grantee's Authorized Representative as shown in resolution

12/15/15

Date

RESOLUTION NO. 2015-R 078

A RESOLUTION OF THE CITY COUNCIL OF THE CITY OF CULVER CITY, CALIFORNIA, APPROVING AN APPLICATION FOR PROPOSITION 84 GRANT FUNDS FROM THE BALDWIN HILLS CONSERVANCY FOR THE CULVER CITY/PARK TO PLAYA – BALLONA CREEK CONNECTION PROJECT.

WHEREAS, the Safe Drinking Water, Water Quality and Supply, Flood Control, River and Coastal Protection Bond Act of 2006 (Proposition 84), was adopted by California voters in the general election on November 7, 2006, which among other uses, provides funds to public agencies and nonprofit organizations in the State for the purpose of preventing contamination and degradation of coastal waters and watersheds, protecting and restoring the natural habitat values of coastal waters and lands, promoting access to and enjoyment of the coastal resources of the state; and

WHEREAS, the Baldwin Hills Conservancy (BHC) has set forth the necessary procedures governing application for grant funds under Proposition 84; and

WHEREAS, the BHC's procedures require the City of Culver City to certify, by resolution, the approval of the application before submission of the application(s) to the BHC; and

WHEREAS, the application contains assurances with which the City of Culver City must comply; and

WHEREAS, if the application is approved by the BHC, the City of Culver City will enter into an Agreement with the BHC to provide funds for the Culver City/Park To Playa – Ballona Creek Connection Project (the "Project").


NOW, THEREFORE, the City Council of the City of Culver City DOES HEREBY RESOLVE:

1. The filing of an application with the Baldwin Hills Conservancy for Proposition 84 Funds for the Project is hereby approved; and

2. The City of Culver City hereby certifies that it understands the assurances and certification in the application form; and

3. The City Council hereby appoints the City Manager, or his designee, to conduct all negotiations, and to execute and submit all documents including, but not limited to, applications, agreements, amendments, payment requests and so forth, which may be necessary for the completion of the aforementioned project.

APPROVED and ADOPTED this 12 day of October 2015.


MICHEÁL O' LEARY, MAYOR
City of Culver City, California

ATTEST:


MARTIN R. COLE, City Clerk

A15-00735

APPROVED AS TO FORM:


CAROL A. SCHWAB, City Attorney



THE REALIZATION OF PARK TO PLAYA SEGMENT 7

The following are excerpts from the Mountains Recreation and Conservation Authority's "Park to Playa Trail Feasibility Study and Wayfinding Plan" ("the Feasibility Study;" November 21, 2011):

"In 2000, the Park to Playa vision was first articulated: to connect the Ballona Wetlands area in Marina Del Rey east along Ballona Creek to the Baldwin Hills. The vision to create a seamless trail that connects urban residents with the Pacific coast will be realized through a cooperative effort between several agencies and jurisdictions."

"Segment 7: Culver City Park - The objective is to complete a more accessible connection from BHSO (the Baldwin Hills Scenic Outlook) through Culver City Park to Duquesne Avenue, by providing connections to existing accessible trails."

BRIEF DESCRIPTION OF THE PROPOSED PROJECT

The proposed project achieves the Park to Playa Trail Feasibility Study and Wayfinding Plan's most critical recommended elements for pedestrian and bicycle access from Culver City Park to the Ballona Creek. The project will connect the Baldwin Hills Overlook/Culver City Gateway to Ballona Creek by creating/completing an ADA compliant passageway and an alternative trail route for bicycles that converge at the Duquesne Avenue portal of Culver City Park and continue to the Duquesne Avenue entrance to the Ballona Creek Bike Path.

PROJECT SCOPE

The proposed project will complete Park to Playa Segment 7, a crucial trail segment that links the Baldwin Hills Overlook/Culver City Gateway with Ballona Creek by: [1] improving the existing trail and removing barriers along section 7.1 (see Project Map), which connects the Culver City Gateway to the upper ball fields within Culver City Park. From the terminus of section 7.1, the project incorporates several elements to complete the Ballona Creek connection: [2] An ADA Accessible/Pedestrian Passageway – the construction of two new ADA accessible path sections, section 7.2a to the north of the existing Interpretive Trail Boardwalk ("the Boardwalk") and section 7.3 to the south, including needed improvements to the Boardwalk in order to better integrate it as the mid-section of the trail; [3] A Bicycle Path – the installation of shared lane markings (sharrows) that create a bicycle thoroughfare from the top of Culver City Park, to Duquesne Avenue via Leash Lane on the southern boundary of the Park. This will connect to the bike lanes on the extension of Duquesne into Culver City Park that were recently installed; and, [4] The Final Creek Connection - joining the Passageway and the Bike Path at the Duquesne entrance to Culver City Park, where both then extend north* to the Duquesne entrance to the Ballona Creek Bike Path, with pedestrians accessing the Creek entrance via an existing crosswalk and bicyclists benefitting from a new, dedicated left turn lane, allowing safe and easy access to the Creek from the northbound lanes (section 7.4). As per the Wayfinding Plan guidelines, the appropriate wayfinding signs, regulatory signs, warning signs and object markers will be prevalent throughout Segment 7.

*[*Note: Changes to the signal and striping at the intersection of Duquesne Avenue and Jefferson Boulevard are being done as part of a separate project which is funded by a Highway Safety Improvement Project grant that the City received.]*

BENEFITS OF THE PROPOSED PROJECT

Together, the improvements included in this proposed project will resolve multiple issues by increasing access to and enjoyment of the Overlook and Ballona Creek as well as overall connectivity to the Baldwin Hills Parklands. The proposed improvements are strongly supported by the community and will also help achieve the vision laid out in earlier planning documents such as the Baldwin Hills Park Master Plan and the Baldwin Hills Conservancy's Access and Linkages Study. The project creates and implements a comprehensive trail system within Culver City Park and creates an enduring connection between existing parks, trails and urban streams.

The completion of Segment 7 has a regional impact, in that it serves as an important link between urban Los Angeles, including underserved and park-poor communities, and coastal resources such as Ballona Creek, and ultimately, the Pacific Ocean. Given the high use of the existing recreational opportunities in the area, including Baldwin Hills Scenic Overlook Trail and the Ballona Creek Bike Path, the project fulfills an important community need for accessible and enjoyable outdoor recreation. Community support for projects such as this is evidenced by the results of the Feasibility Study's community outreach which showed that approximately 82% of respondents liked walking on trails or in parks and 41% enjoyed bicycling.

The proposed project is entirely consistent with the recommendations in the Baldwin Hills Park Master Plan. The Master Plan envisions "greenway connections" along streets leading to the park that will promote pedestrian and bicycle access. It also articulates the concept of connecting the Baldwin Hills to Ballona Creek and the Beach, which this project helps to do by filling gaps in pedestrian and bicycle access from the nearest Ballona Creek access point to the Overlook. In short, the proposed project realizes an important Baldwin Hills Conservancy goal by linking previous BHC and partner agency projects and advancing the Park to Playa vision.

PROJECTED TIMELINE

Start Date of March 1, 2016:			
	Description	Estimated Duration	Projected Completion Date
Task	Pre-Construction Phase	4 Months	June 30, 2016
1	Prepare Architectural, Structural and Civil Plans		
2	Conduct Public Bidding		
3	Award Contract and Sign Agreement		
	Construction Phase	4 Months	October 31, 2016
4	Mobilization		
5	ADA Path Construction		
6	Boardwalk Area Stabilization & Improvements		
7	DG Path Construction (adjacent to Ropes Course)		
8	Bicycle Path Striping & Signage		
10	Complete Final Inspection		
	Post-Construction Phase	2 Months	December 31, 2016
11	Final Approval by City Council		
12	File Notice of Completion		

APPLICANT BACKGROUND /RELATED EXPERIENCE

The City of Culver City has extensive experience managing similar projects. Recent related projects that were multi-agency collaborations with the City of Culver City include the Jefferson Blvd. Pedestrian and Bicycle Access Improvements Project and the Hetzler Road Pedestrian Trail Project.

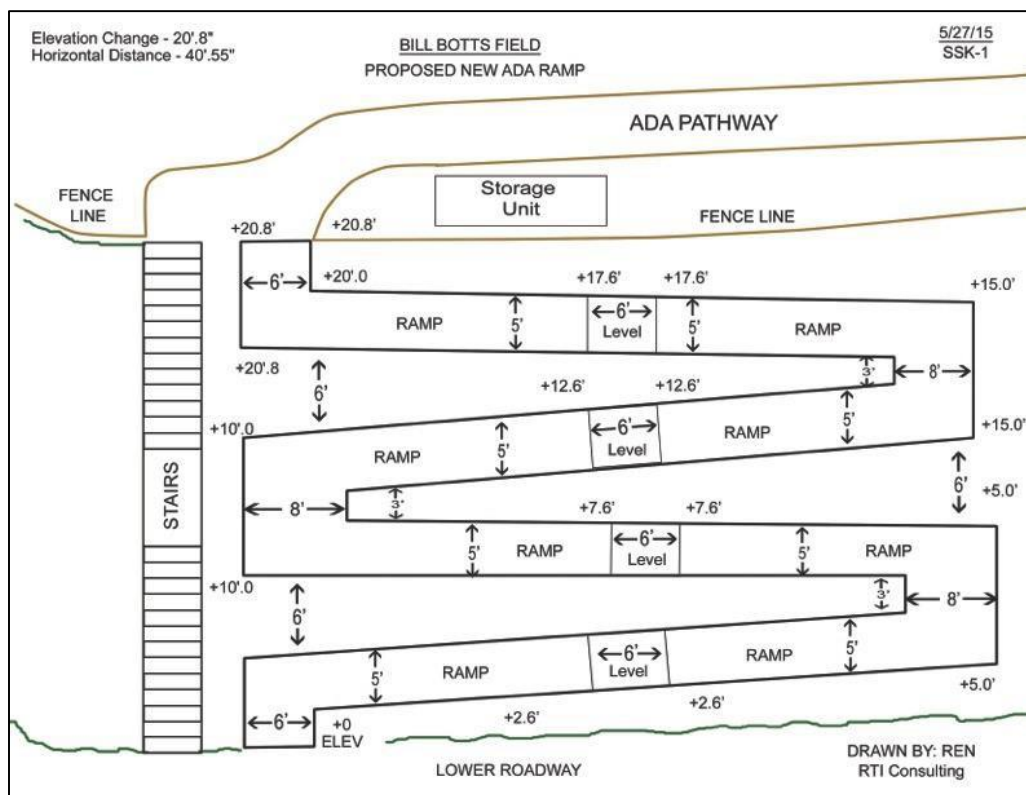
The City has the financial resources to undertake this project. The City's revenues for Fiscal Year 2015/2016 are anticipated to be \$109 million. The Capital Improvement Project budget is \$6.5 million and approximately \$120,000 has been specifically set aside as matching funds for this project. Should this grant be approved, it is anticipated that this \$120,000, as well as some in-kind staff time, will be used to meet the required City match.

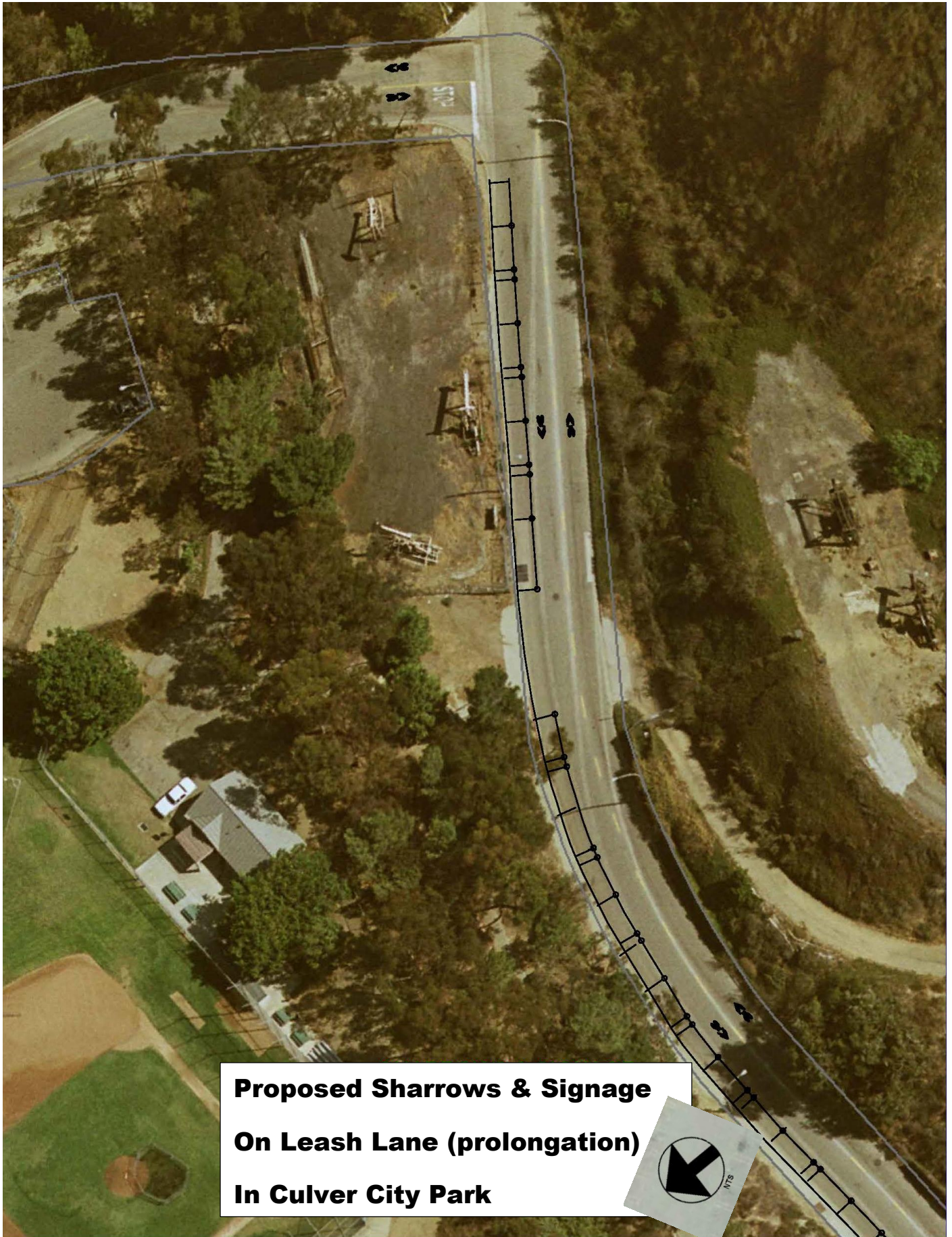


EXISTING STAIRWAY FROM UPPER TO LOWER BALL FIELDS



PROPOSED ADA RAMP FROM UPPER FIELDS TO LOWER ROAD
(A COMPONENT OF SECTION 7.2)





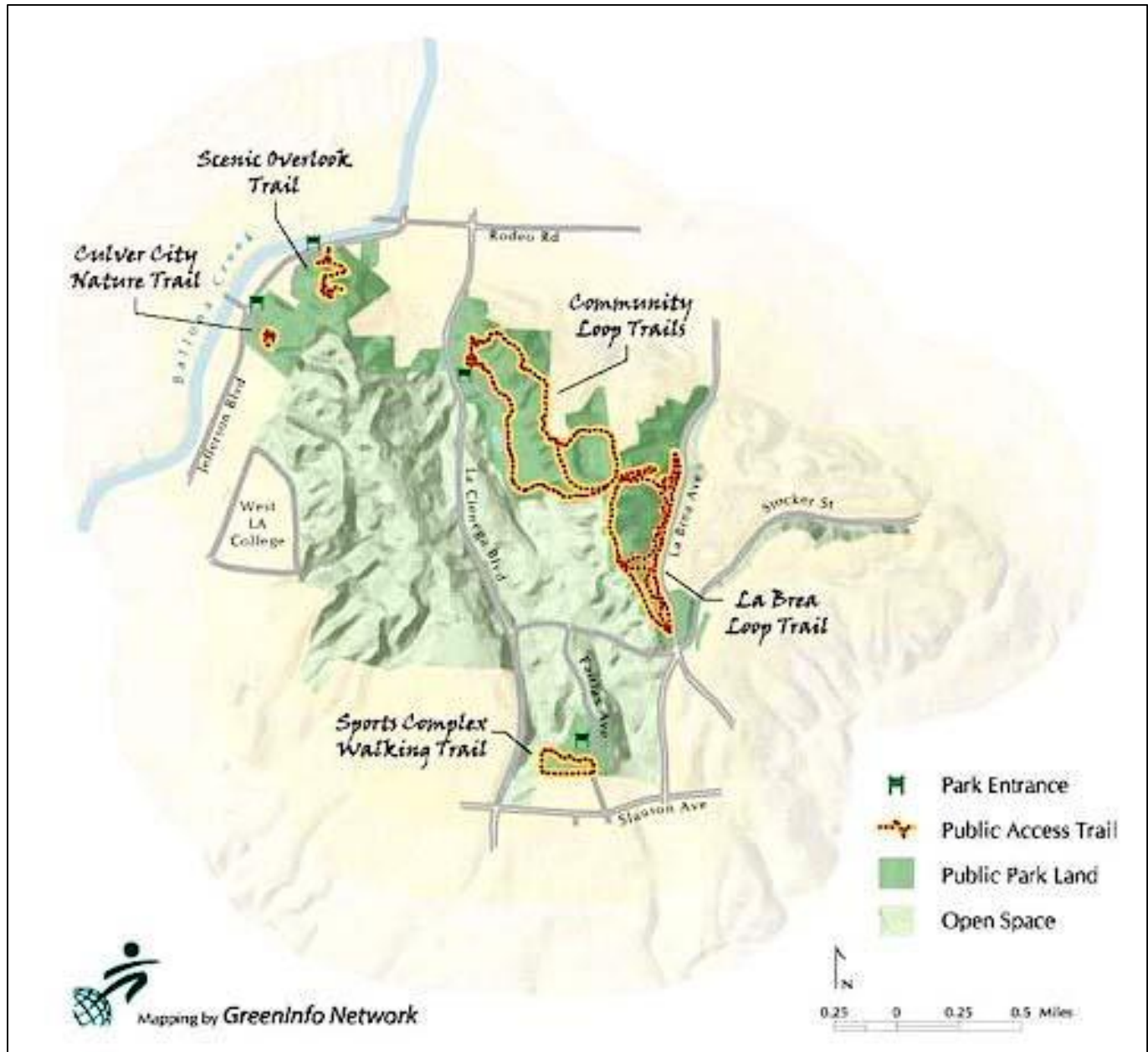


Bicycle Left-Turn Lane
Northbound Duquesne Avenue
Into Ballona Creek Bike Path

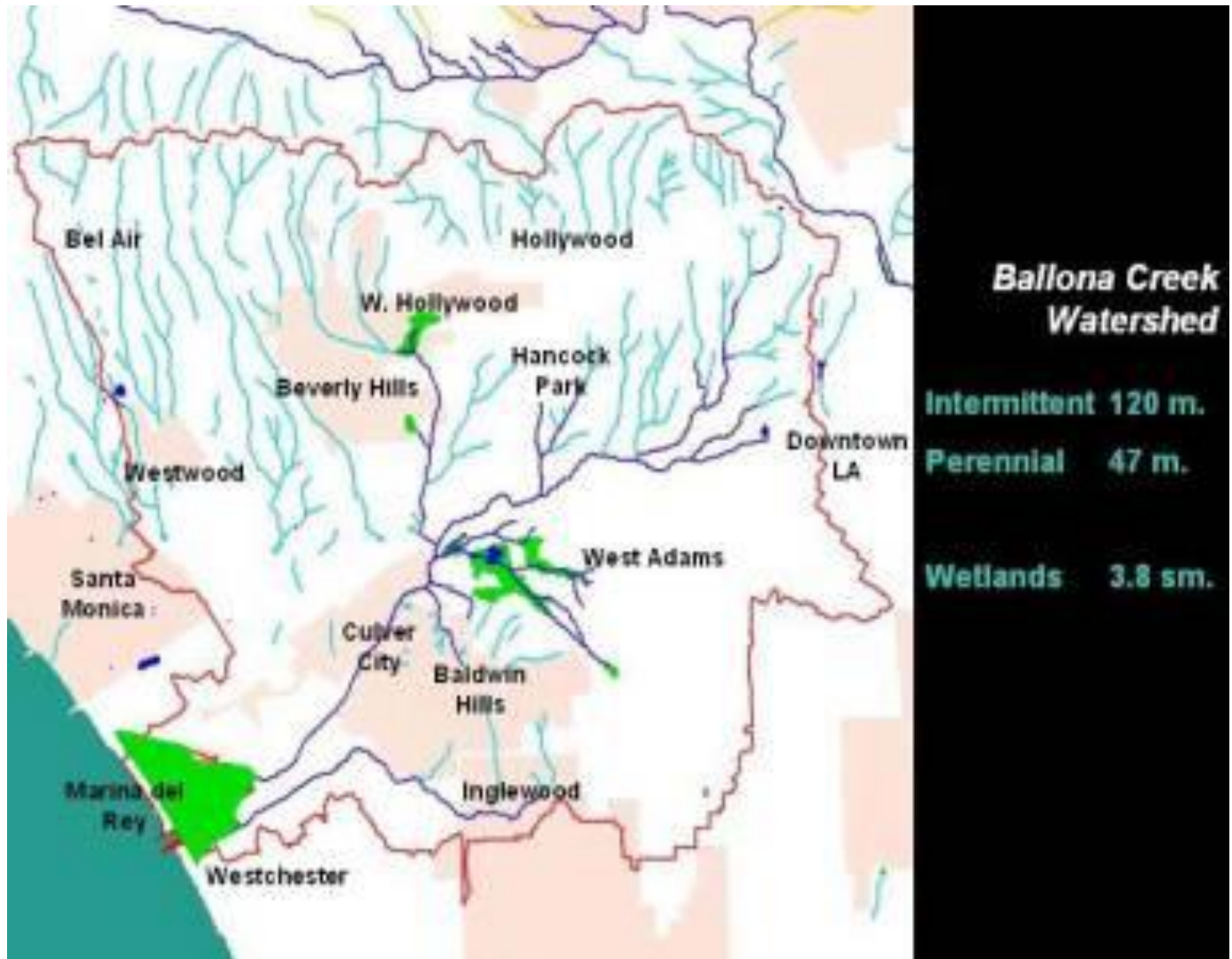
PROJECT COSTS

Task	Description	Amount
1	ADMINISTRATION	
	Prepare architectural, structural and civil plans	\$ 48,765
	Project Management by City Staff	\$ 15,000
	Administration Subtotal	\$ 63,765
	CONSTRUCTION	
2	General Requirements	
	Mobilization, dumpsters, field supervision	\$ 52,210
3	ADA Path Construction from the Baldwin Hills Scenic Overlook / Culver City Gateway to the existing Interpretive Trail Boardwalk (the "Boardwalk")	
	Remove irrigation spray at each ADA Path switchback	\$ 2,340
	Remove existing concrete culvert and prepare dirt for ADA Path	\$ 66,581
	ADA hillside concrete Ramp connecting upper & lower sports fields	\$ 109,335
	Crosswalk, curb cut, signage, etc. from ADA Path to Boardwalk	\$ 18,700
	Option #1 for DG pathway connecting Ramp with Boardwalk	\$ 28,523
4	Boardwalk Area Stabilization and Improvements	
	Remove, regrade, erosion control, add rock & concrete retaining walls	\$ 30,546
	Dirt pathway resurfacing at Boardwalk entrance/exit	\$ 39,945
5	Decomposed Granite Trail Construction	
	Construct DG trail from the base of the Boardwalk, running adjacent to the ropes course along the entrance drive to the existing sidewalks on Duquesne Ave.	\$ 14,300
6	Bicycle Path from CC Gateway to Ballona Creek Bike Path	
	Bicycle Path striping and signage	\$ 8,100
	Construction Subtotal	\$ 370,580
	10% Construction Contingency	\$ 37,058
	PROJECT TOTAL	\$ 471,403
	Proposed Funding Sources	
	Baldwin Hills Conservancy Proposition 84 Grant	\$ 336,043
	Match - Culver City Capital Improvement Fund & General Fund	\$ 135,360
	PROJECT TOTAL	\$ 471,403
	City Match / Total Project Cost	29%
	Administration / Grant Amount	19%

GENERAL MAP OF THE AREA



WATERSHED MAP OF THE AREA





BALLONA CREEK *Renaissance*

BCR...Connecting Creek and Community
www.ballonacreek.org

October 14, 2015

David McNeill, Executive Officer
Baldwin Hills Conservancy
5120 Goldleaf Circle, Suite 290
Los Angeles, CA 90056

Subject: Support Letter for the City of Culver City's Grant Application
for the Culver City/Park to Playa – Ballona Creek
Connection (Park to Playa Trail Segment 7).

Dear Mr. McNeill:

On behalf of Ballona Creek Renaissance (BCR), I am writing to express our strong support for the City of Culver City's application for Baldwin Hills Conservancy Proposition 84 grant funds for the Culver City/Park to Playa – Ballona Creek Connection Project.

The proposed Project will complete Park to Playa Trail Segment 7 by incorporating the Park to Playa Trail Feasibility Study and Wayfinding Plan's most critical recommended elements for pedestrian and bicycle access. This connection between the Baldwin Hills Overlook/Culver City Gateway and the Ballona Creek Bike Path will be accomplished by linking existing trails within Culver City Park through the creation of an ADA compliant passageway and a separate bicycle thoroughfare that will traverse the Park, converging at the Duquesne Avenue portal of Culver City Park and continuing northbound to the Duquesne Avenue entrance to the Ballona Creek Bike Path.

Once completed, Segment 7 will serve as an important link between urban Los Angeles, including underserved and park-poor communities, and coastal resources such as Ballona Creek, and ultimately, the Pacific Ocean. Given the high use of the existing recreational opportunities in the area, including Baldwin Hills Scenic Overlook Trail and the Ballona Creek Bike Path, this Project fulfills an essential community need for accessible and health-enhancing outdoor recreation. We believe that the Ballona Creek Connection also achieves a broader, regional objective, bringing us all one step closer to realizing the Park to Playa vision.

In summary, BCR enthusiastically supports Culver City's grant application. Please feel free to contact me if you have any questions. Thank you for your consideration.

Sincerely,

Amy Rosenstein
President, Board of Directors
Ballona Creek Renaissance (BCR)

Board of Directors

Amy Rosenstein, President
Sandrine Cassidy Schmitt, Vice President
Deborah Gregory, Secretary
Rich Hibbs, Treasurer
Lucy Blake-Elahi
Bobbi Gold
Erick Perez
Irene Reingold
Gerald Sallus
Mim Shapiro

Advisory Council

Michele Bigelow
Steven Coker
Evan Dumas
Lori Escalera
Bob Hadley
Blake Hottle
Scott Malsin
Dino Parks
Marina Tidwell
David Valdez, and
Jim Lamm,
President Emeritus

Ballona Creek Renaissance (BCR)...Connecting Creek and Community

A Culver City-based 501(c)(3) nonprofit organization,

Federal Tax ID No. 95-4764614, P.O. Box 843, Culver City CA 90232, www.ballonacreek.org

BALDWIN HILLS CONSERVANCY

5120 West Goldleaf Circle, Suite 290
Los Angeles, CA 90056
Phone: (323) 290-5270
Fax: (323) 290-5278
www.bhc.ca.gov

Memorandum

To: Governing Board

From: Sara Amir, Chair

Date: October 23, 2015

Re: Item 6: Discussion and Possible Action on BHC Officer Nominations in Preparation for Elections to be Held at the December 4, 2015 Board Meeting

Background: The Nomination Committee is prepared to consider candidates to fill the Vice Chair position in 2016-2017. Eligible candidates will be selected from the attached list based on the protocol below adopted by the Governing Board in 2003. The Committee will present the final list of nominees for election at the upcoming Conservancy meeting.

Officer Nomination Procedures

1. The Nominating Committee shall be an annual committee.
2. The outgoing BHC Board Chair shall become the Chair of the Nominating Committee. Two other members shall be volunteers.
3. The Board Vice Chair shall rotate as the next Board Chair.
4. Nominees for office shall be selected for diversity of background and experience different than previous Chairs, and for having previously served as a committee chair person.
5. The Nominating Committee will recommend one or two candidates for Chair; voting Board members may nominate others at the time of election. The candidate with the highest number of votes shall be declared the winner.
6. A member shall hold each of the two offices for no more than one year; re-election may occur beginning the third year out of office.
7. Term of office shall be January to December.

CHAIR AND VICE CHAIR ANNUAL ELECTIONS

Process

1. Vice Chair rotates to Chair; Chair becomes Past Chair.
2. New Vice Chair elected.
3. Current Chair, Vice Chair and Past Chair are committee to nominate next Vice Chair.
 - a. Vice Chair selection should recognize diversity and expertise.
 - b. Selection made to achieve a different perspective/representation than previously.

Rationale

1. Compatible with Publication 32558, of the Resources Code.
2. Adds structure and forethought to current process.
3. Allows members to express their interest in being Vice Chair one month prior to the actual vote (instead of announcing interest at the meeting in which the votes are taken).
4. Committee to survey eligible members for interest and expertise, and recommend candidates for whom Board votes.
5. Gives Vice Chair experience prior to elevation to Chair.

<u>BOARD MEMBERS (eligible)</u>
Jacquelyn Dupont-Walker
Yolanda Gorman
Lloyd Dixon
Robert L. Jones
Allan Boodnick
Craig Sap

BALDWIN HILLS CONSERVANCY

5120 West Goldleaf Circle, Suite 290
Los Angeles, CA 90056
Phone: (323) 290-5270
Fax: (323) 290-5278
www.bhc.ca.gov

Memorandum

To: - Governing Board

From: - David McNeill, Executive Officer
Gail Krippner, Grant Program Manager

Date: October 23, 2015

Re: Item 7: Presentation on the Local Community Engagement Process for the L.A. Countywide Parks Needs Assessment

Recommendation: No Action Required

Background: In February 2015, acting on a motion by L.A. County Supervisors Ridley-Thomas and Antonovich, the L.A. County Board of Supervisors (BOS) directed the L.A. County Department of Parks and Recreation (DPR) to prepare a comprehensive Parks and Recreation Needs Assessment. The BOS approved the \$3.5M project budget to implement the study.

The goals of the Countywide Park Needs Assessment include gathering data to be used in the development of future park projects, infrastructure and recreational opportunities. The Final report will identify study areas and priority projects with cost estimates.

Please see link for further information: <http://lacountyparkneeds.org/>.

In September 2015, BHC Staff attended the Countywide Parks Needs Assessment kick-off meeting. Staff received general overview and instructions for partnership in the "Engagement Process" part of the project.

Conservancy Staff will coordinate with the City of Culver City to hold one (1) Community Engagement Meeting within the specified study area (see Attachment #1). BHC supporter, stakeholder and non-profit organization, *Mujeres de la Tierra*, has generously volunteered to act as fiscal agent for the production of printed materials and hospitality for the community meeting to be held during the first quarter of 2016.

Baldwin Hills + Culver City Study Area Outreach Strategy

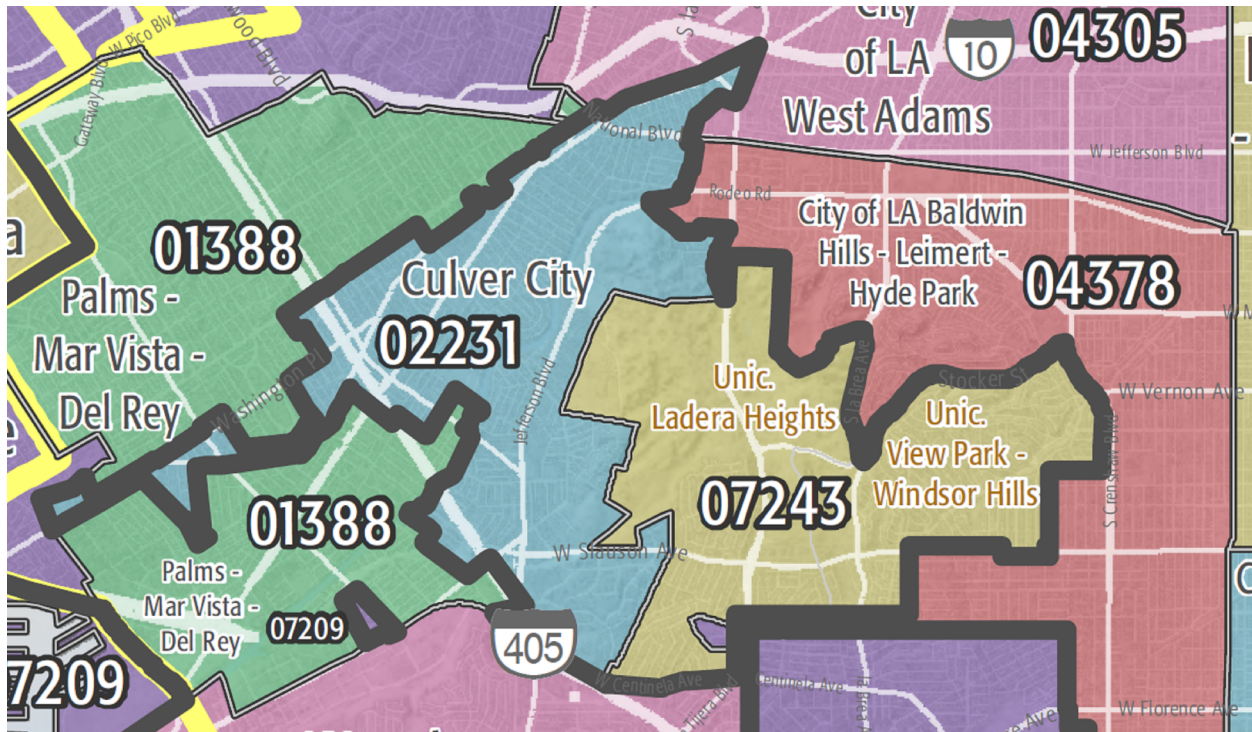
- Holiday Outreach (flyers, banners, info kiosk @ all holiday events)
- Community Groups (invite to meeting & provide flyers for member distribution)
- Park User Groups (inform & provide flyers to specific park user groups)
- Coordination w/ County Supervisors' Field Offices and other County Departments
- County Staff will also distribute flyers to libraries, Public Health Field Offices and events hosted by Youth Athletic Leagues, Sheriff at Neighborhood Watch meetings and events.
- Social Media / Website / Newsletters
- County staff will coordinate w/ Public Information Office to provide info about Park Needs Assessment & meetings via DPR website, Twitter account, Facebook page and Department/Agency newsletters.

Baldwin Hills + Culver City Study Area Timeline

Sep. 29, 2015	BHC Staff attended Countywide Needs Assessment Kick-off Meeting
Oct. 15, 2015 – Dec. 31, 2015	Outreach
Nov. 16, 2015	BHC Staff to attend mandatory Facilitator Training Session
Dec. 1, 2015	Community Engagement Toolkit available to BHC Staff
Dec. 1, 2015 – Feb. 15, 2016*	BHC to conduct one (1) Park Needs Assessment Community Meeting
Feb. 29, 2016	BHC Staff to provide County DPR w/ Project Priority List by Study Area
Spring – Summer 2016	Countywide Parks Needs Assessment Study Completed
	* = date TBD

Future information about the Conservancy's Engagement Process activities may be found here: <http://www.bhc.ca.gov/>.

Baldwin Hills + Culver City Study Area



Source:

http://lacountyparkneeds.org/wp-content/uploads/2015/08/LA-Countywide-Park-Needs-Assessment-Study-Areas-2015_0624.pdf

BALDWIN HILLS CONSERVANCY

5120 West Goldleaf Circle, Suite 290
Los Angeles, CA 90056
(323) 290-5270 Phone
(323) 290-5278 Fax
www.bhc.ca.gov

Memorandum

To: Governing Board
From: David McNeill, Executive Officer
Date: October 23, 2015
Re: Item 8: Executive Officer Report

Administrative Update

Office: A new office lease has been secured at Wateridge for an additional four years through the Department of General Services Real Estate Division. Design and furniture accommodations for up to five employees have been incorporated into the operations budget.

Prop 1: The first round of grant application requests closed on September 30, 2015. Two applications were received for staff screening and potential panel evaluation. The second round begins November 1, 2015. Staff anticipates eligible project/s will be ready for consideration in January 2016. Interviews for the BHC Prop 1 Staff Services Analyst position are being scheduled this month. A pool of 17 screened applicants will be considered, however a second pool of applicants is going to be solicited during October as well.

Legislative Update

Baldwin Hills Sunset Date Repeal: On October 8, 2015, AB 466 – Ridley-Thomas, was signed by the Governor and filed by the Secretary of State. The bill was amended to extend the Conservancy sunset date to 2026 (ten years) and will officially go into effect on January 1, 2016. Please see Attachment #1 for a copy of the final bill text.

Projects Status Report

Please see Attachment #2 for the updated Baldwin Hills Conservancy (BHC) Local Assistance/Capital Outlay Projects Status Report.

Fiscal Update

Please see Attachment #3; BHC Summary Expenditure Sheet by Fund, and Attachment #4; BHC Prop 40 & Prop 84 Bond Cash Funds. The reports correspond with the end of month two (2) for the 2015-2016 Fiscal Year.



California
LEGISLATIVE INFORMATION

AB-446 Baldwin Hills Conservancy. (2015-2016)

Assembly Bill No. 446

CHAPTER 624

An act to amend Section 32580 of the Public Resources Code, relating to the Baldwin Hills Conservancy.

[Approved by Governor October 08, 2015. Filed with Secretary of State October 08, 2015.]

LEGISLATIVE COUNSEL'S DIGEST

AB 446, Ridley-Thomas. Baldwin Hills Conservancy.

The Baldwin Hills Conservancy Act establishes the Baldwin Hills Conservancy in the Natural Resources Agency to, among other things, acquire and manage public lands within the Baldwin Hills area, and provide recreational, open space, wildlife habitat restoration and protection, and lands for educational uses within the area. Existing law provides that the act will remain in effect until January 1, 2018.

This bill would extend the operation of the act until January 1, 2026.

Vote: majority Appropriation: no Fiscal Committee: yes Local Program: no

THE PEOPLE OF THE STATE OF CALIFORNIA DO ENACT AS FOLLOWS:

SECTION 1. Section 32580 of the Public Resources Code is amended to read:

32580. This division shall remain in effect only until January 1, 2026, and as of that date is repealed, unless a later enacted statute, that is enacted before January 1, 2026, deletes or extends that date.

**Baldwin Hills Conservancy
Local Assistance / Capital Outlay Projects Status Report
10/20/15**

Capital Outlay Grantee/Administrator	Project Title	ContractID	Fund Source	Funds Allocated	PROJECT STATUS
Mountains Recreation and Conservation Authority (MRCA)	Milton Street Park Construction	BHC12000	Prop 84	\$2,000,000	Park portion is nearly complete, but on hold pending required adjustments to stairs and ramp; Green Street portion will be a second phase; it will be re-bid separately when permits are obtained from City of L.A.; Project completion expected December 2016.
Los Angeles County Dept. of Parks & Recreation	Stoneview Nature Center	BHC12002	Prop 40	\$5,000,000	Pre-construction phase; site preparation to begin October 2015; Nature center interpretative content and design finalized Oct-Nov. 2015; Project completion expected
Mountains Recreation and Conservation Authority (MRCA)	Park to Playa Trail - Stocker Corridor Section	BHC12005	Prop 40	\$1,030,000	Significant progress includes site grading with slope build-up, lower stairs, ADA pathway, concrete drains, parking lot, monuments, and irrigation; next quarter work includes driveways and, monument signage; Project completion expected Summer 2016.
City of Culver City	Hetzler Road Pedestrian Path at BHSO	BHC13003	Prop 84	\$791,000	All funding sources have now been secured pending final signatures. Construction contract to be awarded at October 26 City Council meeting at original bid price (same as January 2015); Construction to begin March or April 2016.
University of Southern California (USC)	Baldwin Hills Biota Update	BHC13002	Prop 84	\$140,794	12 month extension granted Summer 2015; Expected completion August 2016. Data collection and analysis proceeding as scheduled.

Capital Outlay Grantee/Administrator	Project Title	ContractID	Fund Source	Funds Allocated	PROJECT STATUS
Loyola Marymount University (LMU)	Parklands User Survey Study	BHC14000	Prop 84	\$236,042	Pilot study completed; First round of data collection completed as of September 2015; Survey report will be available in December. Next collection period beginning in January 2016.

Baldwin Hills
2015/16 Summary Sheet by Fund

<u>As of 8/31/2015</u>	<u>PCA #</u>	<u>Remaining</u> <u>Appropriation</u>	<u>EXP + ENC</u>	<u>BALANCE</u>	<u>Encumber by</u>	<u>Liquidate by</u>
<u>ELPF - #0140, Support</u>						
2015 Budget Act Item 3835-001-0140	10001	\$ 377,000.00	\$ 47,575.81	\$ 329,424.19	06/30/16	06/30/18
<u>Prop 40 - #6029, Support</u>						
2015 Budget Act Item 3835-001-6029	10005	\$ 118,000.00	\$ 16,383.34	\$ 101,616.66	06/30/16	06/30/18
<u>Prop 84 - #6051, Support</u>						
2015 Budget Act Item 3835-001-6051	10009	\$ 129,000.00	\$ -	\$ 129,000.00	06/30/16	06/30/18
<u>Prop 1 - #6083, Support</u>						
2015 Budget Act Item 3835-001-6083	10006	\$ 100,000.00	\$ -	\$ 100,000.00	06/30/16	06/30/18
Total Support Balance				\$ 660,040.85		
<u>Prop 1 - #6083, Local Assistance/ Capital Outlay</u>						
2015 Budget Act Item 3835-101-6083	20004	\$ 2,000,000.00	\$ -	\$ 2,000,000.00	06/30/18	06/30/20
Total Prop 1 Balance				\$ 2,000,000.00		
<u>Prop 40 - #6029, Capital Outlay</u>						
2015 Budget Act Item 3835-301-6029	20005	\$ 11,604,000.00	\$ -	\$ 11,604,000.00	06/30/18	06/30/20
Total Prop 40 Balance				\$ 11,604,000.00		
<u>Prop 84 - #6051, Capital Outlay</u>						
2015 Budget Act Item 3835-301-6051	30004	\$ 2,118,000.00	\$ -	\$ 2,118,000.00	06/30/18	06/30/20
2014 Budget Act Item 3835-301-6051	30003	\$ 3,120,000.00	\$ 1,758,149.00	\$ 1,361,851.00	06/30/17	06/30/19
Total Prop 84 Balance				\$ 3,479,851.00		

BOND CASH FUNDS

8/31/15

2015 COMMERCIAL PAPER TE		CASH ALLOCATED	EXPENDITURES	BALANCE
	PROP 84:	\$841,819.00	388,952.40	\$452,866.60
	PROP 40	\$947,429.58	0.00	\$947,429.58
2010 SPRING BAB SALE		CASH ALLOCATED	EXPENDITURES	BALANCE
	PROP 40:	\$579,277.00	579,277.00	\$0.00
	PROP 84:	\$829,272.44	829,272.44	\$0.00
2010 DECEMBER BAB SALE				
	PROP 40:	\$380,954.00	380,954.00	\$0.00
	PROP 84:	\$43,760.00	43,760.00	\$0.00
2010 DECEMBER TE SALE				
	PROP 40:	\$60,547.82	0.00	\$60,547.82
2010 SPRING TE SALE				
	PROP 40:	\$3,082,367.86	2,829,270.45	\$253,097.41
	PROP 84:	\$1,095,534.16	See adjustments below	\$0.00
2009 OCTOBER TE SALE				
	PROP 40:	\$1,812,376.87	1,812,376.87	\$0.00
	PROP 84:	\$188,122.75	188,122.75	\$0.00
2009 MARCH SALE				
	PROP 40:	\$901,961.01	901,961.01	\$0.00
	PROP 40-SMIF	\$10,088.33	10,088.33	\$0.00