

## **BALDWIN HILLS CONSERVANCY NOTICE OF PUBLIC MEETING**

The meeting of the Baldwin Hills Conservancy (BHC) will be held  
Friday, April 15, 2016, 10:00 a.m. - 12:00 p.m.

**Baldwin Hills Scenic Overlook Visitor's Center  
5300 Hetzler Road, Culver City, CA 90232**

### **Teleconference Location**

Natural Resources Agency  
1416 Ninth Street, 13<sup>th</sup> Floor, Room 1305  
Sacramento, California 95814

**10:00 a.m. - CALL TO ORDER - Marina Voskanian, Chair**

### **MEETING AGENDA**

PUBLIC COMMENTS ON AGENDA OR NON-AGENDA ITEMS SHOULD BE SUBMITTED BEFORE ROLL CALL

***Public Comment and Time Limits: If you wish to speak on an agenda item, please complete a speaking card available near the door to the meeting room. Individuals wishing to comment will be allowed up to three minutes to speak. Speaker times may be reduced depending upon the number of speakers.***

1. - Roll Call - Avril LaBelle, Executive Secretary
2. - Approval of Minutes (February) – Marina Voskanian, Chair
3. - Public Comments - Marina Voskanian, Chair
4. - Oath of Office for new Assembly Speaker Appointee Keisha Sexton – David Edsall, Deputy Attorney General, State of California, Department of Justice
5. - Presentation of Special Recognition Award to Dr. Allan Boodnick for his 14 Years of Service on the BHC Board – Marina Voskanian, Chair
6. - Consideration of a Resolution Authorizing a BHC Prop 84 Local Assistance Grant in an Amount Not to Exceed \$124,536 to the LA Audubon Society for the Baldwin Hills Parklands Conservation Program – David McNeill, Executive Officer
7. - Presentation on AB-2729 Williams & Thurman: Idle Oil Well Safety Regulations – Jason Marshall, Chief Deputy Director, State of California, Department of Conservation
8. - Prop 1 Program Update – Daniel Sciolini, Staff Services Analyst
9. - Executive Officer Report: Project Status Update, Fiscal Update, Legislative Update - BHC Staff Representatives
10. Board Member Announcements or Proposed Agenda Items for Future Meetings –  
*\*Next meeting is tentatively scheduled for **June 10, 2016.***

### **ADJOURNMENT**

In accordance with the Americans with Disabilities Act of 1990, if you require a disability related modification or accommodations to attend or participate in this meeting, including auxiliary aids or services, please call the Conservancy at (323) 290-5270 at least five days prior to the meeting. For more information about the Conservancy, you may visit our website at [www.bhc.ca.gov](http://www.bhc.ca.gov)

*Be it known pursuant to Government Code Sections 54956.8, 54956.9, the Conservancy may hold a closed session to discuss and take possible action regarding instructions on real estate negotiations, on personnel matters and/or to receive advice of counsel on pending or potential litigation. Confidential memoranda related to these issues may be considered during such closed session discussions.*

**BALDWIN HILLS CONSERVANCY**

5120 West Goldleaf Circle, Suite 290

Los Angeles, CA 90056

Phone: (323) 290-5270

**PUBLIC MEETING MINUTES  
BALDWIN HILLS CONSERVANCY**

**Friday, February 05, 2016**

**10:30 AM Call to Order**

A public meeting of the Baldwin Hills Conservancy (BHC) was assembled at 10:30 a.m. on Friday, February 05, 2016, at the Kenneth Hahn State Recreation Area Community Center, located at 4100 South La Cienega Boulevard, Los Angeles, CA 90056.

**I. Roll Call**

**Members Present:** Julie Alvis, Sara Amir, Allan Boodnick, Joan Cardellino, Lloyd Dixon, Yolanda Gorman, Robert Jones, Eraina Ortega, Patricia O'Toole, Craig Sap, Marina Voskanian, John Wicker.

**Staff Present:** David McNeill, Executive Officer; Gail Krippner, Grant Program Manager; Noa Rishe Khalili, Park and Recreation Specialist; Daniel Sciolini, Staff Services Analyst; Avril LaBelle, Executive Secretary.

**II. Approval of Minutes (December) – Marina Voskanian, Chair**

*The Chair called for a motion to approve the minutes. Member Gorman so moved, Member Boodnick seconded the motion, and a roll call vote was taken – 7 aye, 0 nay, 0 abstain, Minutes approved.*

**III. Public Comments – Marina Voskanian, Chair**

*Public comment was invited. No comments cards were submitted.*

**IV. Introduction of BHC Staff Services Analyst Daniel Sciolini, Proposition 1**

The Baldwin Hills Conservancy welcomes Staff Services Analyst Daniel Sciolini.

**V. - Semi-Annual Report: Park User Survey Study of the Baldwin Hills Parklands – Dr. Michelle Romolini, Director of Research, Loyola Marymount University - Center for Urban Resilience**

Dr. Romolini and Viktoria Kuehn gave an informative presentation on the Park User Survey Study of the Baldwin Hills Parklands. *(For details please see attached: Memorandum dated February 5, 2016, Item 5; presentation summary - The Value of Urban Parklands: A User Study of the Baldwin Hills Park System. Presentation Sides may also be found online at <http://www.bhc.ca.gov/meetings.html> See meeting date Friday, February 5, 2016, click on "Link to Presentation.")*

**VI. Executive Officer Report: David McNeill, Gail Krippner, Noa Rishe**

**Administrative Update**

We were able to fill our Staff Services Analyst position for the Proposition 1 Grant Program, and processed two applications received during the first round of program solicitation.

**Project Status Update**

**Proposition 84 Projects**

**Milton Street** – The Park is now open to public access; Army Corps of Engineers will be reviewing for risk assessment; there is a second phase for the Green Street, we are waiting for Letters of No Objection; bidding will begin in March; the project is on schedule to be completed this December.

**Hetzler Road** – Additional funding is now in place; there is a contractor bid; construction is set to begin in April.

**USC** – USC is conducting the Biota study update. They were granted a 12 month extension last summer, and they are still on schedule to complete this project by August of 2016. Data and analysis is ongoing.

**Loyola Marymount (LMU)** – The pilot study is complete and the first round of data collection is complete. LMU is the beginning of the next round of data collection.

**Park to Playa** – The City of Culver City is working on the Park to Playa, Ballona Creek Connection - Section 7. Preconstruction is set to begin March 2016, and set for completion in December of 2016. (Section 7 - From the Scenic Overlook, around the ball field, down to the nature walk trail, to the bike lanes on Duquesne Avenue, and out to the Ballona Creek)

#### **Proposition 40 Projects**

**Stoneview Nature Center** – The soil has been tested. It is not harmful to humans, just not great for plants. The county has found a solution by finding better soil that is good for plants. We may have to extend the agreement for five months to account for the delays. The interpretive program is moving along. It includes signage explaining the plants, what they do, and their history, why they are significant.

**Park to Plays - Stocker Corridor Trail** – The final punch walk was completed this week. Everything looks great, the ramp, the parking lot, the stairs, and the monuments. A formal opening is scheduled for Friday, March 4, 2016.

#### **Fiscal and Legislative Update**

Staff Support - We are on track and on budget for the year's operations

Local Assistance/Capital Outlay – Proposition 1 – We have two more opportunities to rollout and encumber funds. Proposition 40 – Has been reappropriated and is now available for projects.

Proposition 84 – Funds are available for work on interpretive programs, and other public access projects we currently have. Bond Cash Funds - We have cash projected for spending over the next few months.

Congressman Ted Lieu is drafting legislation to initiate a three-year resources study of the Los Angeles Coastal Area, to include the BHC territory within the national recreation area and allow us to be a part of it. The study would examine land, water and interest of the "Coastal" study area to evaluate opportunities to protect resources in the expanded territory from the Santa Monica Bay to the Parklands, and part of the San Pedro Bay.

*(Please see attached Memorandum dated 2/5/2016, Item 6: Executive Officer Report; Attachment #1 – Local Assistance/Capital Outlay Projects Status Report dated 2/4/2016; Attachment #2 – 2015/2016 Summary Sheet by Fund; Attachment #3 – Bond Cash Funds dated 12/31/2015.)*

#### **VII. Board Member Announcements or Proposed Agenda Items for Future Meetings**

*\*The next board meeting is tentatively scheduled for **March 4, 2016**.*

#### **ADJOURNMENT**

There being no more business brought before the board, the meeting was adjourned at 11:53 a.m.

Approved:

---

Marina Voskanian, Chair

Date:



## *Oath -*

*For the Office of the **BALDWIN HILLS CONSERVANCY***

***BOARD** I, **Keisha Sexton** do solemnly swear (or affirm) that*

*I will support and defend the Constitution of the United States and the*

*Constitution of the State of California against all enemies, foreign and*

*domestic; that I will bear true faith and allegiance to the Constitution of*

*the United States and the Constitution of the State of California; that I*

*take this obligation freely, without any mental reservation or purpose of*

*evasion; and that I will well and faithfully discharge the duties upon*

*which I am about to enter.*

*Signature* \_\_\_\_\_

Keisha Sexton

*Term Expires:* \_\_\_\_\_

Subscribed and sworn to before me, this day

\_\_\_\_\_

*Signature:*

\_\_\_\_\_

*Title:*

\_\_\_\_\_

# BALDWIN HILLS CONSERVANCY

5120 West Goldleaf Circle, Suite 290  
Los Angeles, CA 90056  
(323) 290-5270 Phone  
[www.bhc.ca.gov](http://www.bhc.ca.gov)

---

## Memorandum

**To:** Governing Board

**From:** Marina Voskanian, Chair

**Date:** April 15, 2016

**Re:** Item 5: Presentation of Special Recognition Award to Dr. Allan Boodnick for his 14 Years of Service on the BHC Board

**Recommendation:** No action required

**Background:** On behalf of the Governing Board, the Chair will present an award in recognition of Dr. Allan Boodnick for his fifteen years of service as the Assembly Speaker appointee to the Baldwin Hills Conservancy.

Dr. Boodnick is one of the original members of the BHC and participated in the inaugural meeting held in March of 2001. His attendance record for consecutive board meetings lasted 12 years making him the official “Ironman” of the Conservancy. He has logged two terms serving as Chairman/Vice Chair, and managed several ad hoc committees displaying effective leadership and guidance throughout his tenure.

We wish to recognize Dr. Boodnick for his remarkable dedication, and we expect he will continue to serve the Parklands well into the future.

# BALDWIN HILLS CONSERVANCY

5120 West Goldleaf Circle, Suite 290  
Los Angeles, CA 90056  
Phone: (323) 290-5270  
www.bhc.ca.gov

---

## Memorandum

**To:** Governing Board

**From:** David McNeill, Executive Officer

**Date:** April 15, 2016

**Re:** Item 6: Consideration of a Resolution Authorizing a BHC Prop 84 Local Assistance Grant in an Amount Not to Exceed \$124,536 to the LA Audubon Society for the Baldwin Hills Parklands Conservation Program.

**Recommendation:** Approve Resolution 15-05, authorizing a grant for up to \$124,536 in BHC Prop 84 funds to the Los Angeles Audubon Society for the Baldwin Hills Parklands Conservation Program.

**Background:** The Los Angeles Audubon Society has submitted an application for Prop 84 grant funds to administer and implement the Baldwin Hills Parklands (BHP) Conservation Program, a 3-year pilot program. The goal of the Program is to strengthen the participants' stewardship by fostering an understanding of the biodiversity within the Baldwin Hills Parklands, and raising public awareness of responsible interface between park visitors and wild lands. The BHP Conservation Program is designed to reach multiple age groups of park users through two (2) program aspects:

1. A college-credit conservation certificate program for West Los Angeles College students: The students will participate in activities and projects focused on park ecology and stewardship, while gaining knowledge and skills that will potentially lead to future job opportunities in the conservation field.
2. A day-camp program for youth ages 7-12: Spring and summer conservation and craftsmanship day-camps where youth will participate in activities that include natural history and park ecology.

The application (*See Attachment #1.*) requests a grant of Prop 84 Funds in the amount of \$124,536 to develop and implement the BHP Conservation Program. The end result will be a sustainable curriculum module that can be replicated in other parks and junior colleges regionally and state-wide. This program will benefit the community and the Baldwin Hills Parklands by inspiring local youth to be ambassadors for conservation, while providing them with marketable skills and employment experience. Programmatic features ranging from a Park User Education Plan, to handcrafted habitat shelters will be included in the deliverables.

A project match of \$121,178 (40%) from the Baldwin Hills Regional Conservation Authority (BHRCA) Prop A grant program is pending approval, along with an in-kind

match from the LA Audubon of \$60,000 (20%) in the form of Professional Ecologist & Naturalist Education Consultation. The total project amount is \$305,714.

Members Sara Amir, Starlett Quarles, and staff have reviewed the project's application. The assessment of the project description and narrative have yielded the following top four goals of the Baldwin Hills Park Master Plan and the BHC's Strategic Plan: 1) increasing active recreation opportunities for underserved communities; 2) providing for public access and entry ways; 3) protecting and restoring natural habitat; 4) emphasizing connections between existing parks, trails, and urban streams.

## **Baldwin Hills Parklands Conservation Program**

### **Los Angeles Audubon Society**

#### **PROP 84 LOCAL ASSISTANCE GRANT PROJECT REQUIREMENTS**

(For use in the determination of the priority of Conservancy grants and projects authorized under Division 22.7 of the California Public Resources Code)

#### **STANDARD REQUIREMENTS**

**a. Located within the BHC territory**

Site map and narrative identify project is within the Conservancy territory and boundaries as described in PRC 32553 (a).

**b. Promotion of the Conservancy's statutory programs and purposes**

*PRC 32555 (a)* The Conservancy shall provide recreational, open space, wildlife habitat restoration and protection, and lands for educational uses within the area.

*PRC 32555 (c)* The Conservancy shall provide for the public's enjoyment, and enhance the recreational and educational experience on public lands in the territory in a manner consistent with the protection of lands and resources in the area.

*PRC 32565.5 (a)* The Conservancy shall develop and coordinate an integrated program of resource stewardship so that the entire Baldwin Hills area is managed for optimum recreational and natural resource values based upon the needs and desires of the surrounding community.

**c. Consistency with purposes of Prop 84 statute**

*PRC 75060:* Bond funds are available for projects to protect and restore the natural habitat values of coastal waters and lands, and projects and expenditures to promote access to and enjoyment of the coastal resources of the Ballona Creek/Baldwin Hills watershed.

**d. Consistency with the Baldwin Hills Park Master Plan**

*Existing Community Infrastructure, Page 32, BHPMP:* "West L.A. Community College serves area youth and adults. The campus is situated on the western edge of the Baldwin Hills and is positioned to be an important nexus for development of environmental based park management curriculum."

*Education and Interpretation, Page 76, BHPMP:* "Providing opportunities for outdoor education and use of the Baldwin Hills Park as a living laboratory is a primary management goal. Protecting and restoring natural habitat shall be coordinated with education programs whenever possible, in conjunction with park-provided visitor interpretive programs, area schools, after-school and other youth programs and West Los Angeles College."

**e. Greater-than-local interest**

With nearly 3 million Californians residing in a five-mile radius of the Baldwin Hills territory (according to the 2000 census data), and over 58 million trip visits to the Los Angeles area annually by Californians alone, the land resources in the Baldwin Hills represent an extraordinarily unique value to the entire state. This project promotes and implements California's watershed conservation policies in one of the most densely populated areas of the country. In addition, the end result of this pilot project will be a conservation certificate program module that can be replicated in other community colleges regionally and statewide.

**f. Demonstrated expertise in the proposed program area**

Los Angeles Audubon has over 15 years of experience in the Baldwin Hills Parklands. LAAS currently supports its successful outdoor education programs for over 5,000 elementary, middle and high school students across programs at Baldwin Hills Scenic Overlook State Park, Kenneth Hahn State Recreation Area and schoolyard habitats in urban Los Angeles. The LA Audubon successfully completed a previous BHC Prop 84 grant in 2011 which lead to a resource management program that continues to benefit the Baldwin Hills Parklands and community youth to this day.

**ADDITIONAL PRIORITIES**

**g. Leverage**

The applicant has submitted a request to the BHRCA for a 40% match (above the 25% requirement) utilizing the Authority's Prop A grant program totaling \$121,178. This match would leverage Prop 84 funds within the BHC's territory. In addition, the LA Audubon will contribute an in-kind match of \$60,000 (20%) in the form of Professional Ecologist & Naturalist Education Consultation.

**h. Resolution of more than one issue**

This project will establish a college-credit course at WLAC that will be sustainable over the long-term, providing valuable work experience for local students and opportunities for jobs with local parks or for transfer to four-year colleges. Similarly, the conservation day-camp is intended to be developed into a sustained park program that will serve local parents, while providing employment experience for local students. The program will also strengthen park users' connection to nature and sense of stewardship by fostering an understanding of the biodiversity within our parkland at this urban/parkland interface.



**i. - Conflict Resolution**

A major goal of this project is the development of a Park User Education Plan: Trail and Wildlife Protection Plan. Through hands-on volunteer opportunities and training, students will learn about local urban wildlife habitat and environmental issues while developing projects aimed at protecting these resources and educating park users about their importance. Students will be guided in obtaining measurable observation of park users and interactions with the park plants and wildlife (for example, mapping and observing use of illegal trails). Students will develop components of the Park User Education Plan: including design of signage and activities to increase awareness by park users of the park's plants and wildlife. This will help to resolve visitor/wildlife conflicts resulting from a lack of public understanding of the natural resources of the Baldwin Hills Parklands.

**j. - Readiness**

The LA Audubon staff is positioned to start the project in a timely manner. They have a collaborative working relationship with the County of Los Angeles Department of Parks and Recreation who manage the site. They also have existing contacts with members of the West LA College faculty and the LA Community College District board of trustees.

**k. Realization of prior BHC goal**

Previous BHC projects have created environmental education programs for elementary and high school students. This project will build on those efforts by expanding the reach of Baldwin Hills Parklands environmental education to students at the community college level. It will also provide elementary students with an opportunity to continue their environmental education during spring and summer school breaks.

**l. - Cooperation**

The Los Angeles County Department of Parks and Recreation will provide the site for the implementation of this project, in addition to providing logistical support with advertising the camp sessions and managing the registration. West Los Angeles College will assist with student recruitment and will provide guidance and support for the implementation of the certificate program.

## BALDWIN HILLS CONSERVANCY (BHC)

### RESOLUTION 15-05

RESOLUTION AUTHORIZING THE EXECUTIVE OFFICER TO ENTER INTO A GRANT AGREEMENT WITH LOS ANGELES AUDUBON, IN AN AMOUNT NOT TO EXCEED \$124,536 OF BHC PROP 84 FUNDS, FOR DEVELOPMENT AND IMPLEMENTATION OF A BALDWIN HILLS PARKLANDS CONSERVATION PROGRAM .

WHEREAS, the BHC was created to acquire open space and manage public lands within the Baldwin Hills area and to provide recreation, restoration and protection of wildlife habitat within the Conservancy territory; and

WHEREAS, Public Resources Code Section 32565, subdivision (f) (1) instructs the BHC to use Baldwin Hills Park Master Plan as the conceptual guide for planning and acquisition of additional recreational and open space; and

WHEREAS, pursuant to Public Resources Code Section PRC 32555 (c) The Conservancy shall provide for the public's enjoyment, and enhance the recreational and educational experience on public lands in the territory in a manner consistent with the protection of lands and resources in the area; and

WHEREAS, pursuant to Public Resources Code Section PRC 32565.5 (a) The Conservancy shall develop and coordinate an integrated program of resource stewardship so that the entire Baldwin Hills area is managed for optimum recreational and natural resource values based upon the needs and desires of the surrounding community; and

WHEREAS, the BHC has the authority, pursuant to Public Resources Code Section 32569 (a), to make grants to non-profit organizations to further the purposes of the Conservancy; and

WHEREAS, the Los Angeles Audubon Society is a non-profit organization with expertise in wildlife interpretation as well as creating community-based programming for California State Parks; and

WHEREAS, the Los Angeles Audubon Society adopted Resolution 2-1 approving the submission of an application for local support from the BHC Prop 84 funds; and

WHEREAS, Los Angeles Audubon Society has submitted an application for BHC's Prop 84 local assistance grant program for habitat restoration in the Conservancy territory consistent with the funding source and grant requirements adopted by the BHC under resolution 10-06; and

WHEREAS, pursuant to Public Resources Code 75060, funds from the Safe Drinking Water, Water Quality and Supply, Flood Control, River and Coastal Protection Bond Act of 2006 are available for projects in the Baldwin Hills and Ballona Creek Watershed to promote access to and enjoyment of the coastal resources of the State; and

WHEREAS, this action is exempt from the environmental impact requirements of the California Environmental Quality Act (CEQA); Now

THEREFORE BE IT RESOLVED, THE BHC GOVERNING BOARD:

1. - AUTHORIZES A GRANT IN AN AMOUNT NOT TO EXCEED \$124,536 OF BHC PROP 84 FUNDS TO LOS ANGELES AUDUBON SOCIETY FOR THE DEVELOPMENT AND IMPLEMENTATION OF A BALDWIN HILLS PARKLANDS CONSERVATION PROGRAM.
2. - ADOPTS THE STAFF REPORT AND RECOMMENDATIONS DATED APRIL 15, 2016 FOR THIS ITEM.
3. - APPOINTS THE EXECUTIVE OFFICER, AS AGENT TO CONDUCT ALL NEGOTIATIONS, EXECUTE AND SUBMIT ALL DOCUMENTS INCLUDING, BUT NOT LIMITED TO AGREEMENTS, PAYMENT REQUESTS, AND CERTIFICATIONS WHICH MAY BE NECESSARY FOR THE COMPLETION OF THE AFOREMENTIONED PROJECT(S).

Passed and Adopted by the Board of the  
BALDWIN HILLS CONSERVANCY

on \_\_\_\_\_, 2016.

\_\_\_\_\_  
Marina Voskanian  
Chair

ATTEST: - \_\_\_\_\_  
David Edsall  
Deputy Attorney General

State of California — The Resources Agency  
BALDWIN HILLS CONSERVANCY

APPLICATION FOR LOCAL ASSISTANCE GRANT

PROJECT NAME	<u>\$124,536</u> GRANT AMOUNT	
Baldwin Hills Parklands Conservation Program		
PROJECT COST	<u>\$305,714</u> ESTIMATED TOTAL	
	(State Grant and other funds)	
GRANTEE (Agency and address-including zip code) Angeles	COUNTY - Los Angeles	NEAREST CITY - Los
Los Angeles Audubon Society P.O. Box 411301 Los Angeles, CA 90041-8301 Recreation Area	PROJECT ADDRESS - Kenneth Hahn State 4100 S La Cienega Blvd, Los Angeles, CA 90056	
NEAREST CROSS STREET - Stocker		
SENATE DISTRICT NO. 30		ASSEMBLY DISTRICT NO. 54

Grantee's Representative Authorized in Resolution:

Carol Babeli    Development Director    917-923-9166

Name (type)	Title	Phone
-------------	-------	-------

Person with day-day responsibility for project (if different from authorized representative):

Stacey Vigallon Environmental Education Director    323-481-4037

Name (type)	Title	Phone
-------------	-------	-------

Brief description of project:

The Baldwin Hills Parklands Conservation Program is a pilot program that will be centered at Kenneth Hahn Park with the goal of strengthening park users' connection to nature and sense of stewardship by fostering an understanding of the biodiversity within our parkland at this urban/parkland interface.. The plan covers two aspects: 1) Baldwin Hills Parklands Conservation Certificate, and 2) Baldwin Hills Conservation and Craftsmanship Day Camp. The goal is to educate and inspire children, young adults and the public through stewardship lessons learned in the park that may also serve to influence actions in their daily lives.

For Dev. projects Land Tenure – Project is: \_\_\_\_\_ acres:    For Acquisition projects-Projects will be \_\_\_\_\_ acres

\_\_\_\_\_ Acres owned in fee simple by Grant Applicant    \_\_\_\_\_ Acquired in fee simple by Grant Applicant

\_\_\_\_\_ Acres available under a \_\_\_\_\_ year lease    \_\_\_\_\_ Acquired in other than fee simple  
(explain) \_\_\_\_\_

\_\_\_\_\_ Acres other interest (explain) \_\_\_\_\_

I certify that the information contained in this project application form, including required attachments, is accurate.

Signed Carol Babeli    3/24/16  
Grantee's Authorized Representative as shown in Resolution    Date

## RESOLUTION NO. 2-1

RESOLUTION OF THE Los Angeles Audubon Society BOARD OF DIRECTORS  
APPROVING THE APPLICATION FOR GRANT FUNDS FROM  
THE BALDWIN HILLS CONSERVANCY  
FOR PROPOSITION 84 FUNDING FOR the  
Kenneth Hahn Park User Education and Wildlife Protection Plan  
-----

WHEREAS, the Safe Drinking Water, Water Quality and Supply, Flood Control, River and Coastal Protection Bond Act of 2006, was adopted by California voters in the general election on November 7, 2006, which among other uses, provides funds to public agencies and nonprofit organizations in the State for the purpose of preventing contamination and degradation of coastal waters and watersheds, protecting and restoring the natural habitat values of coastal waters and lands, promoting access to and enjoyment of the coastal resources of the state, and

WHEREAS, the Baldwin Hills Conservancy has set forth the necessary procedures governing application for grant funds under the Proposition, and

WHEREAS, the Conservancy's procedures require Los Angeles Audubon Society to certify, by resolution, the approval of the application before submission of said application(s) to the Conservancy; and

WHEREAS, said application contains assurances that Los Angeles Audubon Society must comply with; and

WHEREAS, Los Angeles Audubon Society will enter into an Agreement with the Conservancy to provide funds for acquisition and development projects.

NOW, THEREFORE, BE IT RESOLVED THAT THE Los Angeles Audubon Society Board of Directors HEREBY:

1. Approves the filing of an application with the Baldwin Hills Conservancy for Proposition 84 Funds for the above project; and
2. Certifies that Los Angeles Audubon Society understands the assurances and certification in the application form; and
3. Certifies that Los Angeles Audubon Society has, or will have, sufficient funds to operate and maintain the project in perpetuity; or has the right to assign maintenance to another agency; and
4. Appoints Los Angeles Audubon Society's Development Director, Carol Babeli or designee, to conduct all negotiations, and to execute and submit all documents including, but not limited to, applications, agreements, amendments, payment requests and so forth, which may be necessary for the completion of the aforementioned project.

Passed, approved and adopted this 10<sup>th</sup> day of February, 2016

ATTEST:



Margot Griswold  
President  
Los Angeles Audubon Society

**Prop 84 Application  
Narrative  
22 March 2016**

**Baldwin Hills Parklands Conservation Program**

**Program Overview**

Baldwin Hills Parklands play an essential role in the health of surrounding neighborhoods and the broader ecological community of the Ballona Creek watershed. For the ethnically and socio-economically diverse communities surrounding it, the Baldwin Hills Parklands support the mental and physical health by providing access to open space for recreation and physical fitness. Additionally, the parklands serve as an island of habitat for native plants and wildlife within the sea of urbanization that now largely characterizes the Ballona Creek Watershed. The proposed Baldwin Hills Parkland Conservation Program will be centered at Kenneth Hahn Park with the goal of strengthening park users' connection to nature and sense of stewardship by fostering an understanding of the biodiversity within our parkland at this urban/parkland interface. To achieve this goal, our proposed Conservation Program is designed to reach all age groups of park users through two program aspects: 1) a college certificate program; and 2) a day-camp program.

The first aspect of the Program is a pilot conservation certificate program for local college students. This aspect of the Program will engage West Los Angeles College and its students in activities and projects centered on park ecology and stewardship that will lead to potential job opportunities, such as park interpreters, rangers, and educators among other professional opportunities. The certificate program itself will be important for students to show on their resume as it will count as experience.

The second aspect of the program is a pilot conservation and craftsmanship day-camp for ages 7 -12 at Kenneth Hahn Park where youth will be engaged in activities that include natural history and park ecology. The connection between the two aspects of the program is that WLAC students will intern as assistants within the day-camp.

WLAC students will play a key role in both aspects, from engaging all park users through the certificate program, leading a variety of conservation activities, such as habitat restoration and trail protection to the development of interpretive signage. Once students complete the certificate training, they will serve as interns for the youth day-camps.

At the end of these two pilots, the program intends to establish a for-credit course at WLAC that will be sustainable over the long-term, providing valuable work experience for local students and opportunities for jobs with local parks or for transfer to four-year colleges. Similarly, the conservation day-camp is intended to be developed into a sustained park program that will serve local parents, while providing employment experience for local students.

Each of the two aspects of the Baldwin Hills Parkland Conservation Program are described in the following section, including planning, example activities and timelines.

**Aspect 1: Baldwin Hills Parkland Conservation Certificate**

This aspect of the program will be a pilot curriculum to (1) directly engage West Los Angeles College (WLAC) students in hands-on community service, providing them with training and work experience to serve as naturalists, interpreters, educators, and stewards within Baldwin Hills parkland; and (2) establish an ongoing conservation partnership program at WLAC that complements campus instruction

and provides meaningful services that benefit park users and parklands. This new program will build upon the strong foundation of outdoor education that LAAS has developed in the Baldwin Hills over the past eleven years.

During our research into how to best serve WLAC students and parklands concurrently, we learned that even more important to students than college credit was gaining work experience that they could put on a resume. Without it, they have difficulty acquiring even entry-level part-time jobs to support themselves, their families, and cover the costs of attending community college. To meet this need in the context of parkland stewardship, LAAS will offer the Parklands Conservation Certificate Program. Aligned to the WLAC semester schedule, the program will engage participants in a minimum of 80 hours of training and supervised volunteer work experience in Baldwin Hills parklands per semester. Through hands-on volunteer opportunities and training, students will learn about local urban wildlife habitat and environmental issues while developing projects aimed at protecting these resources and educating park users about their importance. Upon successful completion of the semester-long program, each student would receive a certificate that indicates to potential employers that the student has training and work experience. The program would be offered each semester, and students would be encouraged to participate in more than one semester of the program. Those students with certification would be eligible to serve as paid interns in LAAS's Elementary and Middle School Outdoor Education Program as well as the proposed Conservation and Craftsmanship Day Camps (described in Aspect 2 of the program). Additionally, students with certificates would be the first to learn about jobs and internship opportunities within LAAS's professional network of non-profit organizations, businesses, and government agencies.

Concurrent with this LAAS-based certificate program, we will begin the process to establish a formal class at the WLAC campus, engaging both instructors, administrators, advisors and students in a partnership with LAAS. The goals for the class are (1) for students to earn college credit for their participation in the Parklands Conservation Certificate Program, and (2) for LAAS to collaborate with motivated WLAC instructors in a range of disciplines to offer multidisciplinary projects that complement classroom learning and promote parkland stewardship in the context of the certificate program. LAAS has successfully collaborated with UCLA, LMU, Santa Monica College, and Los Angeles Valley College to provide training and work experience for students while they earn college credit for their time spent with us. The WLAC Parkland Conservation Certificate Program will be more extensive in its goals of collaboration with the college than our previous collaborations, and we would aim to use it as a model for other similar park/college partnerships within the California Community College System.

The certificate program will be directed by senior-level LAAS staff, with associate-level staff undertaking the day-to-day guidance of the participating students. The associate staff members are college graduates who attended high school in the local community, with experience working in both KHSRA and BHSO with LAAS over the past three years on both habitat restoration projects and environmental education projects. There is tremendous potential for mentorship among these young professionals and participating students. And, once the Parklands Conservationist Certificate Program is more established, great potential will exist for peer-to-peer mentorship and support as well. Our young professionals and the participating students will be the face of parkland conservation, sending a powerful and inspiring message to park users and the local community that young community members value and take an active role in caring for urban parkland.

The pilot certificate program has the immediate goal to produce a park user awareness plan with measureable outcomes. The following section describes the three-year timeline. Within each program

year there are three main tasks: planning, implementation, and evaluation. The following outlines Aspect 1 pilot certificate program and proposed activities:

#### Year 1

- Develop certificate program course outline and activities based on local natural history, with emphasis on a capstone project titled, KHSRA Park User Education Plan: Trail and Wildlife Protection.
- Use existing WLAC contacts and develop new WLAC contacts to help recruit students for the LAAS Parklands Conservation Certificate Program
- Begin recruiting student volunteers from WLAC in fall semester to participate in the Parklands Conservation Certificate Program for spring semester.
- Develop a student participant questionnaire to measure the effectiveness of the stewardship program. The questionnaire will be given at the beginning, in the middle and at the end of the program. LAAS staff currently uses this type of questionnaire to design and manage our other successful environmental education programs. The questionnaire and results also will be used to demonstrate the program's outcomes to WLAC Administration and Academic Senate
- Spring semester: first group of Parklands Conservation Certificate Program students begins with students learning basic information about KHSRA, including field ecology of local plants and wildlife and park user activities while performing volunteer activities; concurrent recruitment of students for fall semester program;
- Assess success of spring semester program and make adjustments for subsequent fall semester;
- Work with new and existing contacts with WLAC instructors and administration, to initiate a working group that will develop a collaborative plan for community service certificate course for credit at the college.

#### Year 2

- Students who completed certification during the previous spring semester are encouraged to participate as paid interns or volunteers at LAAS's environmental education program at KH for public schools beginning in the fall semester of Year 2.
- Parklands Conservation Certificate Program continues for fall and spring semesters. Students are guided in obtaining measurable observation of park users and interactions with the park plants and wildlife. For example, mapping and observing use of illegal trails.
- Students are guided in development of components of the Park User Education Plan: Trail and Wildlife Protection Plan, including design of signage and activities to increase awareness by park users of the park's plants and wildlife.
- Students are guided in development and implementation of nature-based activities to present to both staff and children at the WLAC day care center, with the ultimate goal of training day care center student staff as camp leaders.
- Students with certification assist with nature camps during spring break and summer break.
- LAAS-WLAC working group completes a proposal to submit to WLAC administrators and Academic Senate for approval of a community service parkland conservation course for credit. Part of the proposal will identify specific employment areas that the course might contribute to students opportunities.

#### Year 3

- As part of the Parklands Conservation Certificate Program students are guided in the development of a park user questionnaire prior to implementation of the park user education plan, and after implementation to test the effectiveness of the plan.
- Signage developed by the students is reviewed and finalized with LA County Parks.



- Park User Education Plan: Trail and Wildlife Protection is implemented with signage installed and educational activities implemented throughout the year by students.
- Students develop and begin a monitoring program for effectiveness of the trail awareness portion of the plan.
- Certified students are encouraged to participate as paid interns or volunteers at LAAS's environmental education program at KH for public schools beginning in the fall semester, and at nature camps during spring break and summer break.
- Pending approval from WLAC administration and Academic Senate, launch community service for credit course in Spring Semester, allowing students participating in the Parklands Conservation Certificate Program to concurrently earn college credits for their time in the program.
- Complete a best management practices document about the Parklands Conservation Certificate Program so that other regions and organizations can use it as a template.

## **Aspect 2: Baldwin Hills Nature Conservation and Craftsmanship Day Camp, Los Angeles Audubon and reDiscover Camp Collaboration**

Baldwin Hills Nature Conservation and Craftsmanship Day Camp pilot is a collaboration of Los Angeles Audubon and reDiscover. These spring and summer break day camps for local children will serve as a bridge for the local community to connect with nature in Baldwin Hills parklands. Offering children a multidisciplinary approach to learning about the importance and ecology of their urban parkland through science, naturalist, and art/engineering activities, the collaboration between Los Angeles Audubon and reDiscover will also provide children with an outstanding opportunity sharpen their critical thinking abilities, gain communication and teamwork skills, and participate in hands-on activities that reinforce environmental stewardship concepts. LAAS will offer internships to WLAC students to assist with camp activities, providing valuable work experience with natural science interpretation and environmental education when they serve as interns.

The following section describes the three-year timeline for the day camp program. Within each program year there are three main tasks: planning, implementation, and evaluation. The following outlines Aspect 2 day camp program and proposed activities:

### **Program Logistics**

- Los Angeles Audubon and reDiscover are proposing multidisciplinary day camps for 20-25 children, ages 7-12, to be held at Kenneth Hahn State Recreation Area.
- We propose to hold a 4-day camp during LAUSD's spring break, and then 5-day camps during LAUSD's summer break.
- In the mornings (830am to 12pm) campers explore nature and science themes, led by Los Angeles Audubon staff at various sites throughout the park.
- In the afternoons (1pm to 4pm) campers would be engaged in a nature-themed Tinkering Workshop, led by reDiscover staff at the Kenneth Hahn greenhouse area with assistance from Los Angeles Audubon staff.
- From 12-1pm campers would have lunch and playtime, supervised by Los Angeles Audubon staff.
- The final day of each camp week will include activities that engage parents of participating campers.
- Campers would need to provide their own transportation to and from Kenneth Hahn State Recreation Area and would need to bring their own lunch.
- We are proposing that the County be responsible for advertising the camp sessions and managing the registration.

- The County, Los Angeles Audubon, and reDiscover would need to create a combined waiver/release form or obtain parent signatures on three distinct waiver/release forms in order for campers to participate.

### **Staff Roles**

Note: having staff-camper ratio that is much lower than a typical public school classroom is essential for camper engagement and safety, especially in the outdoors and when students are using woodworking tools. We anticipate having 5-7 staff members present at all time with campers during each day of camp, for a target ratio of no more than 4 students for every staff person.

LAAS Camp Leaders (2): Senior LAAS environmental education staff; write and implement camp curricula, supervise assistants and interns, coordinate with reDiscover and the County; one Leader would remain each afternoon to assist reDiscover with science content; Leaders would be present every day that camp is being offered.

LAAS Camp Assistants (2): mid-level LAAS staff; assists camp Leaders in set-up and preparation, responsible for leading teams of campers; one Assistant would remain each afternoon to assist reDiscover with science content; Assistants would be present every day that camp is being offered.

LAAS Camp Interns (4): Ideally these positions would be filled by WLAC students participating in the Parklands Conservationist Program; aid Leaders and Assistants in camp set-up and camper activities; one Intern would remain each afternoon to assist reDiscover with science content; Interns would not be scheduled to work every day that camp would be offered.

reDiscover Camp Partner Leader (1): Trained lead instructor from reDiscover; responsible for implementing design and engineering curriculum and eco-structure projects in the afternoons.

reDiscover Camp Partner Assistants (2): Trained assistant instructor from reDiscover; responsible for assisting reDiscover Leader with set-up, take-down, and instruction/oversight of campers

The Baldwin Hills Nature Conservation and Craftsmanship Day Camp capitalizes on the concurrent Parklands Conservation Certificate Program as an opportunity for LAAS to offer assistant staff positions WLAC students participating in the Parklands Conservationist Program. Thus, our certificate program participants gain valuable work experience and mentorship from lead staff, while young campers gain mentorship from college-age role models who come from the local community.

### **Sample Camp Week Instruction Overview**

#### **Day 1: Welcome Day**

The morning program with Los Angeles Audubon will be a nature-based approach to exploring science themes. On this first day of camp, participants will (1) get to know staff and one another through a range of games, (2) create a field notebook out of recycled materials that they will use for the rest of the week, and (3) go on a hike to become familiar with plants and wildlife. From 12-12:45pm, campers will have lunch and supervised free-play. At 12:45pm, campers will transition over to engineering instruction with reDiscover, with 2-3 LAAS staff members remaining to assist reDiscover staff. Campers will be introduced to the tools and materials that they will be using for the rest of the week to build eco-structures for park wildlife. Camp will end for the day at 4pm.

#### **Days 2-4:**

Morning nature curricula with LAAS will be based on California State Science Standards and Next Generation Science Standards. With an emphasis on scientific inquiry and critical thinking, campers will explore the following topics at various sites throughout the park: water quality and conservation,

plate tectonics and geology, solar power, native plants and animals, science illustration, and geography through map and compass work. In the afternoons with reDiscover (and assistance from LAAS staff), campers will develop an understanding of the design and engineering process and the skill set to work individually and collectively on their eco-structures. These hands-on projects will be linked to the natural history information that students learned in the morning sessions. A strong emphasis on communication skills and teamwork is also built into the curriculum.

**Day 5: Family Day**

On the final day of camp, parents will be invited to attend an eco-tour from 8:30-10am, with campers taking the lead to provide information about park plants and wildlife. In the afternoon, parents will be invited to arrive at 3pm to watch students install an eco-structure and to learn about what their child has worked on all week. Any parent who wishes to stay for the entire day will be welcome.

LA Audubon - Baldwin Hills Parklands Conservation Program  
ESTIMATED PROJECT TIMELINE

PROJECT ACTIVITY	COMPLETION DATE
<ul style="list-style-type: none"> <li>• Conduct Nature Summer Camp at KH</li> </ul>	August 2016
<ul style="list-style-type: none"> <li>• Develop Parklands Conservation Certificate Program course outline and activities</li> <li>• Recruit WLAC students to participate in the Parklands Conservation Certificate Program for spring semester</li> <li>• Develop a student participant questionnaire to measure the effectiveness of the certificate program.</li> <li>• Develop existing contacts with WLAC</li> </ul>	December 2016
<ul style="list-style-type: none"> <li>• Initiate 1<sup>st</sup> cohort of WLAC Parklands Conservation Certificate Program students and administer first phase of questionnaire</li> </ul>	January 2017
<ul style="list-style-type: none"> <li>• Conduct 1<sup>st</sup> Nature Spring Camp at KH</li> </ul>	March/April 2017 (timing contingent on LAUSD spring recess schedule)
<ul style="list-style-type: none"> <li>• Administer second phase of Spring semester student questionnaire for the Parklands Conservation Certificate Program</li> </ul>	April 2017
<ul style="list-style-type: none"> <li>• Confer certificates on WLAC students who have completed 80hrs in the Parklands Conservation Certificate Program</li> <li>• Administer final phase of student questionnaire</li> <li>• Work with new and existing contacts with WLAC instructors and administration to initiate a working group that will develop a collaborative plan for community service certificate course for credit at the college</li> </ul>	June 2017
<ul style="list-style-type: none"> <li>• Assess success of spring semester program using questionnaire data; adjust program curriculum and activities as needed</li> </ul>	July 2017
<ul style="list-style-type: none"> <li>• Conduct 2nd Nature Summer Camp at KH</li> </ul>	August 2017

<ul style="list-style-type: none"> <li>Recruit WLAC students for participation in fall semester Parklands Conservation Certificate Program</li> </ul>	August 2017
<ul style="list-style-type: none"> <li>Initiate fall semester (2<sup>nd</sup>) cohort of WLAC Parklands Conservation Certificate Program students and administer first phase of questionnaire</li> </ul>	September 2017
<ul style="list-style-type: none"> <li>Administer second phase of fall semester student questionnaire</li> </ul>	November 2017
<ul style="list-style-type: none"> <li>Recruit WLAC students for spring (3<sup>rd</sup>) cohort semester participation in Parklands Conservation Program</li> <li>Confer certificates on WLAC students who have completed 80hrs in the Parklands Conservation Certificate Program</li> <li>Administer final phase of student questionnaire for fall semester</li> </ul>	December 2017
<ul style="list-style-type: none"> <li>Initiate spring (3<sup>rd</sup>) semester cohort of WLAC Parklands Conservation Certificate Program students and administer first phase of questionnaire</li> </ul>	January 2018
<ul style="list-style-type: none"> <li>Conduct 2<sup>nd</sup> Nature Spring Camp at KH</li> </ul>	March/April 2018 (timing contingent on LAUSD spring recess schedule)
<ul style="list-style-type: none"> <li>Administer second phase of spring semester student questionnaire</li> </ul>	April 2018
<ul style="list-style-type: none"> <li>Students develop and implement nature-based activities to present to both staff and children at the WLAC day care center</li> </ul>	May 2018
<ul style="list-style-type: none"> <li>Confer certificates on WLAC students who have completed 80 hrs in the Parklands Conservation Certificate Program</li> <li>Administer final phase of student questionnaire</li> <li>LAAS-WLAC working group completes a proposal to submit to WLAC Administration and Academic Senate for approval of a community service parkland conservation course for credit.</li> </ul>	June 2018

<ul style="list-style-type: none"> <li>· Assess success of fall and spring semester programs using questionnaire data; adjust program curriculum and activities as needed</li> <li>· Complete signage design and submit for County approval</li> <li>· Complete draft of Park User Education Plan: Trail and Wildlife Protection</li> </ul>	July 2018
<ul style="list-style-type: none"> <li>· Conduct 3<sup>rd</sup> Nature Summer Camp at KH</li> <li>· Recruit WLAC students for fall semester Parklands Conservation Certificate Program</li> </ul>	August 2018
<ul style="list-style-type: none"> <li>· Initiate fall semester (4<sup>th</sup>) cohort of WLAC Parklands Conservation Certificate Program students and administer first phase of questionnaire</li> </ul>	September 2018
<ul style="list-style-type: none"> <li>· Administer second phase of fall semester student questionnaire</li> </ul>	November 2018
<ul style="list-style-type: none"> <li>· Recruit WLAC students for spring semester participation in Parklands Conservation Program</li> <li>· Confer certificates on WLAC students who have completed 80hrs in the Parklands Conservation Certificate Program</li> <li>· Administer final phase of student questionnaire</li> <li>· Pending approval from County staff, install park signage</li> </ul>	December 2018
<ul style="list-style-type: none"> <li>· Initiate spring semester (5<sup>th</sup>) cohort of WLAC Parklands Conservation Certificate Program students and administer first phase of questionnaire. This would be the first semester that the program is a for-credit class.</li> </ul>	January 2019
·	
<ul style="list-style-type: none"> <li>· Administer second phase of spring semester student questionnaire</li> </ul>	April 2019
<ul style="list-style-type: none"> <li>· Confer certificates on WLAC students who have completed 80hrs in the Parklands Conservation Certificate Program and administer final phase of student questionnaire</li> <li>· Park User Education Plan: Trail and Wildlife Protection has been implemented with signage installed and educational activities implemented throughout the year by students.</li> </ul>	June 2019

<ul style="list-style-type: none"> <li>· Complete mapping, wildlife observation, and park user patterns observations.</li> <li>· Using all questionnaire data and assessments of projects completed, complete a best management practices document about the Parklands Conservation Certificate Program so that other regions and organizations can use it as a template.</li> </ul>	July 2019
Project Close-Out	July 2019

**LA Audubon - Baldwin Hills Parklands Conservation Program  
PROJECT BUDGET**

Los Angeles Audubon Society	TASK/SUB-TASK	BHC BUDGET (PROP 84)	BHRCA (PROP A)	OTHER BUDGET & IN- KIND	TOTAL BUDGET
	Year One - Baldwin Hills Parklands Conservation Program	BHC	BHRCA	OTHER BUDGET & IN- KIND	TOTAL
1.0	PLANNING	\$7,476	\$16,064	\$12,000	\$35,540
1.1	Aspect 1: Baldwin Hills Parklands Conservation Certificate				
1.1.1	Develop WLAC course outline (Curriculum Dev, Recruitment, WLAC staff				
	Program Leader I (260 hrs @	\$5,460			\$5,460
	Program Leader II (260 hrs @		\$5,460		\$5,460
	Project Manager (220 hrs @		\$7,700		\$7,700
	Professional Ecologist & Naturalist Edu Consultant (120 hrs			\$12,000	\$12,000
	Teaching Professional Consultant (48 hrs @		\$2,400		\$2,400
1.2	Aspect 2: Baldwin Hills Conservation & Craftsmanship				
1.2.1	Prepare Summer camp activities & outreach to Park				
	Camp Leader I (24 hrs @	\$840			\$840
	Camp Leader II (24 hrs @	\$672			\$672
	Camp Asst I (24 hrs @	\$504			\$504
	Camp Asst II (24 hrs @		\$504		\$504
2.0	PARK USER EDUCATION /IMPLEMENTATION	\$14,430	\$10,412	0	\$24,842
2.1	Aspect 1: Baldwin Hills Parklands Conservation Certificate				
2.1.1	WLAC Course Implementation - Spring semester 15 wks, 6 hours/wk for WLAC students (Coordinate WLAC students, prep & supervise				
	Program Leader I (180 hrs @	\$3,780			\$3,780
	Program Leader II (180 hrs @		\$3,780		\$3,780
	Project Manager ( 60 hrs @ \$35/hr)		\$2,100		\$2,100
2.2	Aspect 2: Baldwin Hills Conservation & Craftsmanship Day Camp				
2.2.1	Conservation Mornings				
	Camp Leader I (68 hrs @	\$2,380			\$2,380
	Camp Leader II (68 hrs @ \$28/hr)	\$1,904			\$1,904
	Camp Asst I (65 hrs @	\$1,365			\$1,365
	Camp Asst II (65 hrs @		\$1,365		\$1,365
	Camp Intern I (40 hrs @	\$607			\$607
	Camp Intern II (40 hrs @	\$607			\$607
	Camp Intern III (25 hrs @ \$15.17/hr)	\$379			\$379
	Camp Intern IV (25 hrs @ \$15.17/hr)		\$379		\$379
2.2.2	Craftsmanship Workshop (afternoon)				
	ReDiscover Camp Partner Leader (40 hrs @ \$22/hr)	\$880			\$880
	ReDiscover Camp Partner Asst. I (40 hrs @		\$800		\$800
	ReDiscover Camp Partner Asst. II (40 hrs @		\$800		\$800
2.3	Camp Supplies (bee boxes, and box screens for park)	\$2,528			\$2,528
2.4	Camp Personnel Mileage (20mi.x11x10days=2200 miles @\$0.54		\$1,188		\$1,188
3.0	EVALUATION	\$1,512	\$1,596	0	\$3,108
3.1	Aspect 1: Baldwin Hills Parklands Conservation Certificate review				



	Program Leader I (24 hrs @	\$504			\$504
	Program Leader II (24 hrs @		\$504		\$504
	Project Manager (24 hrs @		\$840		\$840
3.2	Aspect 2: Baldwin Hills Conservation & Craftsmanship summer camp review				
	Camp Leader I (12 hrs @	\$420			\$420
	Camp Leader II (12 hrs @	\$336			\$336
	Camp Asst I (12 hrs @	\$252			\$252
	Camp Asst II (12 hrs @ \$21/hr)		\$252		\$252
	Year One Total Budget	\$23,418	\$28,072	\$12,000	\$63,490

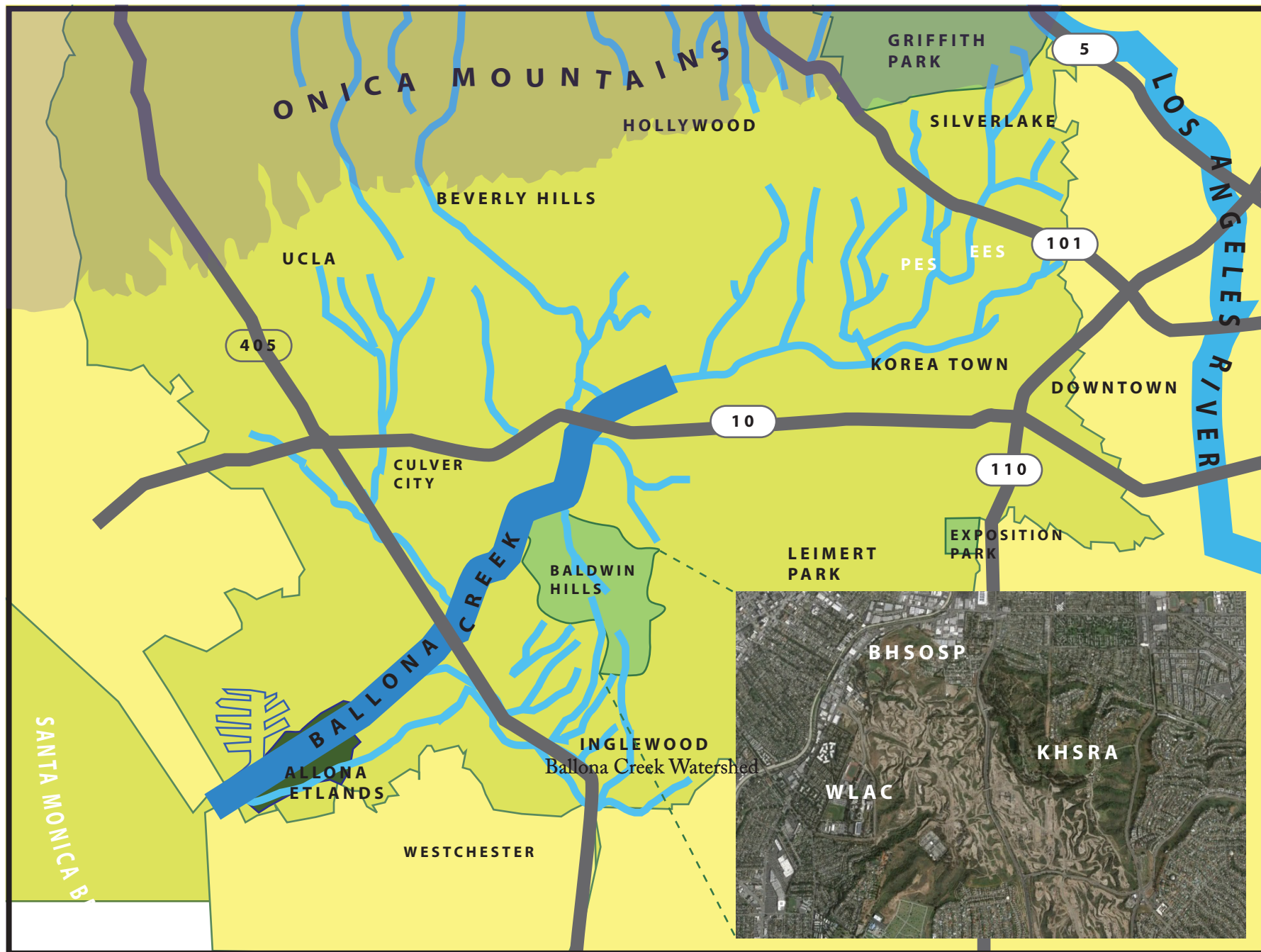
Los Angeles Audubon Society	TASK/SUB-TASK	BHC BUDGET (PROP 84)	BHRCA (PROP A)	OTHER BUDGET & IN-KIND	TOTAL BUDGET
	Year Two - Baldwin Hills Parklands Conservation Program	BHC	BHRCA	Other budget & inkind	Total
1.0	PLANNING	\$3,906	\$4,144	\$6,000	\$14,050
1.1	Aspect 1: Baldwin Hills Parklands Conservation				
1.1.1	WLAC Program prep (Curr. revision, student recruitment, WLAC staff networking)				
	Program Leader I (90 hrs @ \$21/hr)	\$1,890			\$1,890
	Program Leader II (90 hrs @ \$21/hr)		\$1,890		\$1,890
	Project Manager (50 hrs @ \$35/hr)		\$1,750		\$1,750
	Professional Ecologist & Naturalist Edu Consultant (60 hrs @ \$100/hr)			\$6,000	\$6,000
1.2	Aspect 2: Baldwin Hills Conservation & Craftsmanship Day Camp				
1.2.1	Prepare spring & summer camp activities & outreach to Park staff				
	Camp Leader I (24 hrs @ \$35/hr)	\$840			\$840
	Camp Leader II (24 hrs @ \$28/hr)	\$672			\$672
	Camp Asst I (24 hrs @ \$21/hr)	\$504			\$504
	Camp Asst II (24 hrs @ \$21/hr)		\$504		\$504
2.0	PARK USER EDUCATION /IMPLEMENTATION	\$40,603	\$39,500	\$18,000	\$98,103
2.1	Aspect 1: Baldwin Hills Parklands Conservation				
2.1.1	WLAC Program Implementation - Fall and Spring semester 30 wks, 6 hours/wk for WLAC students				
	Program Leader I (345 hrs @ \$21/hr)	\$7,245			\$7,245
	Program Leader II (345 hrs @ \$21/hr)		\$7,245		\$7,245
	Project Manager (120 hrs @ \$35/hr)		\$4,200		\$4,200
2.1.2	Conduct coursework: field ecology, park user observations, trail & wildlife activities plan, signage				
	Program Leader I (340 hrs @ \$21/hr)	\$7,140			\$7,140
	Program Leader II (340 hrs @ \$21/hr)		\$7,140		\$7,140
	Project Manager (240 hrs @ \$35/hr)		\$14,700		\$14,700
	Professional Ecologist & Naturalist Edu Consultant (180 hrs @ \$100/hr)			\$18,000	\$18,000
	Professional Ecologist Team for mapping/training (40 hrs @ \$120/hr)	\$4,800			\$4,800
	WLAC Summer Intern I (50 hrs @ \$15.17/hr)	\$758			\$758
	WLAC Summer Intern II (50 hrs @ \$15.17/hr)		\$758		\$758
2.1.3	iPads (Qty. 2 for field work, mapping) Rental rate quoted per Flying Connected \$86 per week, per unit x 2 x 15 weeks (semester)	\$2,580			\$2,580
2.1.4	Park Signage design/print	\$2,000			\$2,000
2.2	Aspect 2: Baldwin Hills Conservation & Craftsmanship Day Camp - One 4-day spring camp & two 5-day summer camps (total 14 days)				
2.2.1	Conservation Mornings				
	Camp Leader I (94 hrs @ \$35/hr)	\$3,290			\$3,290
	Camp Leader II (94 hrs @ \$28/hr)	\$2,632			\$2,632
	Camp Asst I (91 hrs @ \$21/hr)	\$1,911			\$1,911
	Camp Asst II (91 hrs @ \$21/hr)		\$1,911		\$1,911
	Camp Intern I (66 hrs @ \$15.17/hr)	\$1,001			\$1,001

	Camp Intern II	(66hrs @ \$15.17/hr)	\$1,001			\$1,001
	Camp Intern III	(45 hrs @ \$15.17/hr)	\$683			\$683
	Camp Intern IV	(45 hrs @\$15.17/hr)		\$683		\$683
2.2.2	Craftsmanship Workshop (afternoons)					
	ReDiscover Camp Partner Leader	(60 hrs @ \$22/hr)	\$1,320			\$1,320
	ReDiscover Camp Partner Asst. I	(60 hrs @ \$20/hr)		\$1,200		\$1,200
	ReDiscover Camp Partner Asst. II	(60 hrs @ \$20/hr)	\$1,200			\$1,200
2.3	Camp Supplies (bee boxes, and box screens for park)		\$3,042			\$3,042
2.4	Camp Personnel Mileage Costs (20mi.x11x14 days=3,080 miles @\$.54			\$1,663		\$1,663
3.0	EVALUATION		\$1,512	\$1,596	0	\$3,108
3.1	Aspect 1: Baldwin Hills Parklands Conservation Certificate review					
3.1.1	Program Leader I	(24 hrs @ \$21/hr)	\$504			\$504
3.1.2	Program Leader II	(24 hrs @ \$21/hr)		\$504		\$504
3.1.3	Program Manager	(24 hrs @ \$35/hr)		\$840		\$840
3.2	Aspect 2: Baldwin Hills Conservation & Craftsmanship summer camp review					
3.2.1	Camp Leader I	(12 hrs @ \$35/hr)	\$420			\$420
3.2.2	Camp Leader II	(12 hrs @ \$28/hr)	\$336			\$336
3.2.3	Camp Asst I	(12 hrs @ \$21/hr)	\$252			\$252
3.2.4	Camp Asst II	(12 hrs @ \$21/hr)		\$252		\$252
	Year Two Total Budget		\$46,021	\$45,240	\$24,000	\$115,261

Los Angeles Audubon Society	TASK/SUB-TASK	BHC BUDGET (PROP 84)	BHRCA (PROP A)	OTHER BUDGET & IN-KIND	TOTAL BUDGET
	Year Three - Baldwin Hills Parklands Conservation Program	BHC	BHRCA	Other budget & inkind	Total
1.0	PLANNING	\$3,696	\$4,284	\$6,000	\$13,980
1.1	Aspect 1: Baldwin Hills Parklands Conservation Certificate				
1.1.1	WLAC Program prep (Curr. revision, student recruitment, WLAC staff networking)				
	Program Leader I (80 hrs @ \$21/hr)	\$1,680			\$1,680
	Program Leader II (80 hrs @ \$21/hr)		\$1,680		\$1,680
	Program Manager (60 hrs @ \$35/hr)		\$2,100		\$2,100
	Professional Ecologist & Naturalist Edu Consultant (60 hrs @ \$100/hr)			\$6,000	\$6,000
1.2	Aspect 2: Baldwin Hills Conservation & Craftsmanship Day Camp				
	Camp Leader I (24 hrs @ \$35/hr)	\$840			\$840
	Camp Leader II (24 hrs @ \$28/hr)	\$672			\$672
	Camp Asst I (24 hrs @ \$21/hr)	\$504			\$504
	Camp Asst II (24 hrs @ \$21/hr)		\$504		\$504
2.0	PARK USER EDUCATION /IMPLEMENTATION	\$40,183	\$31,380	\$18,000	\$89,563
2.1	Aspect 1: Baldwin Hills Parklands Conservation Certificate				
2.1.1	WLAC Program Implementation - Fall and Spring semester 30 wks, 6 hours/wk for WLAC students (Conservation, Naturalist, and Educational Activities)				
	Program Leader I (345 hrs @ \$21/hr)	\$7,245			\$7,245
	Program Leader II (345 hrs @ \$21/hr)		\$7,245		\$7,245
	Program Manager (120 hrs @ \$35/hr)		\$4,200		\$4,200
2.1.2	Conduct coursework: field ecology, park user observations, trail & wildlife activities plan, signage design for park user awareness				
	Program Leader I (320 hrs @ \$21/hr)	\$6,720			\$6,720
	Program Leader II (320 hrs @ \$21/hr)		\$6,720		\$6,720
	Program Manager (200 hrs @ \$35/hr)		\$7,000		\$7,000
	Professional Ecologist & Naturalist Edu Consultant (180 hrs @ \$100/hr)			\$18,000	\$18,000
	Professional Ecologist Team for mapping/training (40 hrs @ \$120/hr)	\$4,800			\$4,800
	WLAC Summer Intern I (50 hrs @ \$15.17/hr)	\$758			\$758
	WLAC Summer Intern II (50 hrs @ \$15.17/hr)		\$758		\$758
2.1.3	iPads (Qty. 2 for field work, mapping) Rental rate quoted per Flying Connected \$86 per week, per unit x 2 x 15 weeks (semester)	\$2,580			\$2,580
2.1.4	Park Signage design/print	\$2,000			\$2,000
2.2	Aspect 2: Baldwin Hills Conservation & Craftsmanship Day Camp - One 4-day spring camp & two 5-day summer camps (total 14 days)				
2.2.1	Conservation Mornings				
	Camp Leader I (94 hrs @ \$35/hr)	\$3,290			\$3,290
	Camp Leader II (94 hrs @ \$28/hr)	\$2,632			\$2,632
	Camp Asst I (91 hrs @ \$21/hr)	\$1,911			\$1,911
	Camp Asst II (91 hrs @ \$21/hr)		\$1,911		\$1,911

	Camp Intern I	(66 hrs @ \$15.17/hr)	\$1,001			\$1,001
	Camp Intern II	(66hrs @ \$15.17/hr)	\$1,001			\$1,001
	Camp Intern III	(45 hrs @ \$15.17/hr)	\$683			\$683
	Camp Intern IV	(45 hrs @\$15.17/hr)		\$683		\$683
2.2.2	Craftsmanship Workshop (afternoons)					
	ReDiscover Camp Partner Leader	(60 hrs @ \$22/hr)	\$1,320			\$1,320
	ReDiscover Camp Partner Asst. I	(60 hrs @ \$20/hr)		\$1,200		\$1,200
	ReDiscover Camp Partner Asst. II	(60 hrs @ \$20/hr)	\$1,200			\$1,200
2.3	Camp Supplies (bee boxes, and box screens for park)		\$3,042			\$3,042
2.4	Camp Personnel Mileage Costs (20mi.x11x14 days=3,080 miles @\$ .54)			\$1,663		\$1,663
	EVALUATION		\$1,512	\$1,596	0	\$3,108
3.1	Aspect 1: Baldwin Hills Parklands Conservation Certificate review					
	Program Leader I	(24 hrs @ \$21/hr)	\$504			\$504
	Program Leader II	(24 hrs @ \$21/hr)		\$504		\$504
	Program Manager	(24 hrs @ \$35/hr)		\$840		\$840
3.2	Aspect 2: Baldwin Hills Conservation & Craftsmanship summer camp review					
	Camp Leader I	(12 hrs @ \$35/hr)	\$420			\$420
	Camp Leader II	(12 hrs @ \$28/hr)	\$336			\$336
	Camp Asst I	(12 hrs @ \$21/hr)	\$252			\$252
	Camp Asst II	(12 hrs @ \$21/hr)		\$252		\$252
	Year Three Total Budget		\$45,391	\$37,260	\$24,000	\$106,651

Los Angeles Audubon Society	BALDWIN HILLS PARKLANDS CONSERVATION PROGRAM				
	TOTAL 3-Year Pilot	BHC	BHRCA	Other budget & in-kind	Total
	Direct Costs	\$114,830	\$110,572	\$60,000	\$285,402
	Indirect Costs (10%) (supplies/equip/mileage deducted)	\$9,706	\$10,606		\$20,312
	Total Project Budget	\$124,536	\$121,178	\$60,000	\$305,714



 Ballona Creek Watershed

**BHSOSP** Baldwin Hills Scenic Overlook State Park

**KHSRA** Kenneth Hahn State Recreation Area

**WLAC** West Los Angeles College

## **LA Audubon - Baldwin Hills Parklands Conservation Program Background and Related Experience**

### **Los Angeles Audubon – Organization and Project Personnel**

The grant will be administered by Los Angeles Audubon (LAAS). Established as a California non-profit corporation with 501(c)(3) tax-exempt status in 1911, LAAS is a certified chapter of Audubon. The mission of the Los Angeles Audubon is to promote the enjoyment and protection of birds and other wildlife through recreation, education, conservation and restoration.

Los Angeles Audubon has over 15 years of experience in the Baldwin Hills Parklands, leading monthly birding tours led by volunteers in Kenneth Hahn State Recreation Area and organizing a community volunteer base for habitat restoration projects within both KHSRA and Baldwin Hills Scenic Overlook. In the past two years, LAAS staff led 683 volunteers working 2,049 hours to remove weeds and plant over 2,500 native plants.

LAAS sustains its service in the Baldwin Hills through grants from private foundations, and federal, state and local agencies as well as through private donors. Our current total annual budget is \$425,000, including conservation, education and membership programs. LAAS currently supports its successful outdoor education programs for over 5,000 elementary, middle and high school students across programs at Ballona Wetlands, Baldwin Hills Scenic Overlook State Park, Kenneth Hahn State Recreation Area and schoolyard habitats in urban Los Angeles. Our education budget is \$268,844 annually.

Major funders for 2015-16 include:  
UCLA Philanthropy as Civic Engagement  
Disney Conservation Fund  
California State Parks Foundation  
SoCal Edison  
Norcross Foundation  
National Fish & Wildlife Foundation  
S.Mark Taper Foundation  
Annual Members Appeal  
Private Donors

LAAS has experience successfully managing large, multiyear grants with deferred payments and subcontractors. For example, LAAS has successfully executed grant contracts with California Department of Fish and Wildlife (CDFW) and US Fish and Wildlife Service (USFWS) from 2007 through the present. We are currently in the final year administering a three-year \$158,054 grant for monitoring programs for the Western Snowy Plover and California Least Tern on Los Angeles, Orange and San Diego County beaches, including coordinating over 100 volunteers annually. Annual reports of monitoring have been submitted in a timely fashion each year, as required. Additionally, we track and administer numerous other grants each year to meet all our obligations.



LAAS has the capacity to sustain grants even when funding is delayed. For example, LAAS was able to fund an entire year of our initial Baldwin Hills Greenhouse Program in 2008 when State funding was suspended for budgetary reasons.

#### LAAS Program Personnel:

Stacey Vigallon will be the project manager for the Program. Ms. Vigallon has a Masters degree in scientific illustration with broad biological science training. She initiated the educational program implemented by LAAS in 2008 for the Kenneth Hahn State Recreation Area *Native Plant & Wildlife Garden*, and she developed the guidebook for the *Native Plant & Wildlife Garden* in conjunction with Dr. Margot Griswold and LAAS. She is currently the Director of Environmental Education for LAAS.

Ms. Vigallon is a past-Toyota Green Fellow and has worked for LAAS since 2007 as a scientist and environmental educator. She has extensive experience inspiring youth and will find innovative approaches to collaborate with WLAC to develop a sustainable college course for parkland stewardship and conservation. Ms. Vigallon will coordinate and direct LAAS staff and coordinate our collaboration with WLAC in developing a model program.

Margot Griswold, Ph.D. is Education Chairperson for LAAS, and she is the senior restoration ecologist for Land IQ, LLC. She will collaborate with LAAS staff and donate her time specifically to develop college level curricula with WLAC instructors for the program. Dr. Griswold developed an independent-studies class at Irvine Valley College based on student research on local ecological conservation projects. She has 25 years experience with native plant communities in southern California, specializing in habitat restoration and land management. Dr. Griswold is dedicated to science education, and she has developed curricula in various settings over the past 25 years, including U.C. Irvine, Irvine Valley College, Mount San Antonio College, and UCI Summer Science Institute.

Cindy Hardin is Director of Outdoor Education for our elementary and middle school outdoor education programs. She will assist Ms. Vigallon with the development and implementation of the Conservation and Craftsmanship Day Camps. She is experienced in elementary and middle school education and recently conducted a year long teacher fellowship program for 10 teachers from Los Angeles Unified School District to help the teachers develop outdoor education activities within their urban school yards. Through the KH Outdoor Education Program, Ms. Hardin currently trains and manages college student docents to lead 1,300 elementary and middle school students.

Carol Babeli will be the contract administrator for this grant. She will be responsible for preparing the required report for the grant accounts. Ms. Babeli has worked with LAAS for over three years as Communications, Outreach and Development Director. Ms. Babeli previously worked for years as a national accounts executive with Sony Music Entertainment, preparing budget reports and managing materials and cost reporting.

Carlos Jauregui will develop and co-lead the Baldwin Hills Parkland Conservation Certificate aspect of the program, working day to day with the WLAC students under the direction of Ms. Vigallon. He has worked for LAAS for two years directing students and volunteers in habitat restoration and conservation activities. He is a wildlife biologist with a BA from California State University at Long Beach. Before joining LAAS, Mr. Jauregui was an intern with the Environment for the Americas Internship program, and now participates in the Least Tern conservation projects in Orange, San Diego, and Los Angeles Counties. He has presented at the North America Association of Environmental Education Conference.

Joyce Realegeno will develop and co-lead the Baldwin Hills Parkland Conservation Certificate aspect of the program, working day to day with the WLAC students under the direction of Ms. Vigallon. Ms. Realegeno is a graduate of the Baldwin Hills Greenhouse Program and the University of California, Santa Cruz. She has presented at the California conference on STEM education and the Audubon Convention. Ms. Realegeno completed the California Naturalist certification program, and she was part of the Baldwin Hills Greenhouse alumni team that won the Disney Conservation Award in 2015. Before joining LAAS, Ms. Realegeno was an intern with the Environment for the Americas Internship program, and now participates in the Least Tern conservation projects in Orange, San Diego, and Los Angeles Counties.

The non-profit reDiscover located in Culver City will be a subcontractor to LAAS to participate in craftsmanship activities in the Conservation and Craftsmanship Day Camps.

**Los Angeles Audubon**  
**Financial Statements**  
**For The Year Ended June 30, 2014**

Prepared By Ricardo Montes, CPA



9000 Overland Ave, Culver City, CA 90230

February 10, 2016

To Whom It May Concern:

I am writing in support of Los Angeles Audubon in the development of their new program - Kenneth Hahn Park User Education and Wildlife Protection Plan.

Los Angeles Audubon has shown great leadership in helping to improve urban parks and schoolyards, engaging under-served students and the public in environmental education programs in and around the Baldwin Hills area. These programs are promoting stewardship, improving urban park lands, and are a valuable asset to the community. West LA College would welcome the opportunity to introduce its students to park user education in collaboration with LA Audubon.

I believe that Los Angeles Audubon's newly proposed program is an excellent candidate for your consideration in funding support.

Please feel free to contact my office should you require additional information regarding my experience with Los Angeles Audubon.

Sincerely,

Michael P. Sheehan  
Mathematics Instructor  
West Los Angeles College  
Upward Bound  
(213) 447-2607  
[mikepsheehan@sbcglobal.net](mailto:mikepsheehan@sbcglobal.net)

STATE CAPITOL  
ROOM 5080  
SACRAMENTO, CA 95814  
(916) 651-4030

DISTRICT OFFICE  
Wallis Annenberg Building  
700 STATE DR. SUITE 113  
LOS ANGELES, CA 90037  
(213) 745-6656

WEBSITE:  
<http://sd30.senate.ca.gov/>

EMAIL:  
SENATOR.MITCHELL@SENATE.CA.GOV



SENATOR, THIRTIETH DISTRICT

#### COMMITTEES

Senate Rules Committee  
Committee on Budget and Fiscal Review  
Budget Subcommittee 3 on Health and  
Human Services (Chair)  
Committee on Health  
Committee on Insurance  
Committee on Labor and Industrial  
Relations  
Joint Legislative Budget

Select Committee on Women and  
Inequality (Chair)  
Select Committee on Children and  
Special Needs  
Select Committee on Bilingual and Dual  
Immersion Programs in California

To Whom It May Concern,

I am writing in support of Los Angeles Audubon in the development of their new program - *Kenneth Hahn Park User Education and Wildlife Protection Plan*.

In 2013, Los Angeles Audubon was awarded the State of California Senate Certificate of Recognition for providing invaluable stewardship and restoration efforts in the Baldwin Hills. Los Angeles Audubon has shown great leadership in helping to improve urban parks and schoolyards, engaging under-served students and the public in environmental education programs in and around the Baldwin Hills area. These programs are promoting stewardship, improving urban park lands, and are a valuable asset to the community.

I believe that Los Angeles Audubon's newly proposed program is an excellent candidate for your consideration in funding support.

Please feel free to contact my office should you require additional information regarding my experience with Los Angeles Audubon.

Sincerely,

A handwritten signature in black ink that reads 'Hjmitchell'.

State Senator  
District 30



# BALLONA CREEK *Renaissance*

*BCR...Connecting Creek and Community*

February 8, 2016

David McNeill  
Executive Director  
Baldwin Hills Conservancy  
5120 West Goldleaf Circle, Suite 290  
Los Angeles, CA 90056

Subject: **Kenneth Hahn Park User Education and  
Wildlife Protection Plan**

**Board of Directors**

Amy Rosenstein, President  
Sandrine Cassidy Schmitt, Vice President  
Deborah Gregory, Secretary  
Rich Hibbs, Treasurer  
Lucy Blake-Elahi  
Bobbi Gold  
Erick Perez, BCR Club President  
Irene Reingold  
Mim Shapiro

**Advisory Council**

Michele Bigelow  
Steven Coker  
Evan Dumas  
Bob Hadley  
Blake Hottle  
Scott Malsin  
Dino Parks  
Gerald Sallus  
Marina Tidwell  
David Valdez

Jim Lamm, President Emeritus

Dear Mr. McNeill,

On behalf of Ballona Creek Renaissance (BCR), I am writing to express our enthusiastic support for Los Angeles Audubon in the development of their new program: Kenneth Hahn Park User Education and Wildlife Protection Plan.

As a non-profit organization dedicated to facilitating the long-term renewal of Ballona Creek and its watershed, BCR has worked alongside Los Angeles Audubon students and staff at volunteer events in the Baldwin Hills helping to restore native habitat. We applaud their leadership and environmental education programs which are providing valuable information to the community, promoting stewardship, and improving urban park lands.

From our perspective, Los Angeles Audubon is an excellent candidate for your consideration in funding support.

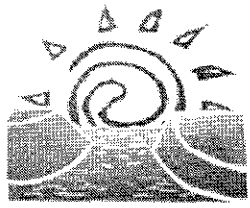
If you need additional information regarding my experience with Los Angeles Audubon, please feel free to contact me.

Sincerely,

Amy Rosenstein, President

***Ballona Creek Renaissance (BCR)...Connecting Creek and Community***

*A Culver City-based 501(c)(3) nonprofit organization, Federal Tax ID No. 95-4764614 P.O. Box 843,  
Culver City CA 90232, [www.ballonacreek.org](http://www.ballonacreek.org)*



# BALLONA CREEK *Renaissance*

*BCR...Connecting Creek and Community*

February 8, 2016

Chair Mark Ridley-Thomas  
Baldwin Hills Regional Conservation Authority  
500 W. Temple Street, Room 866  
Los Angeles, CA 90012

Subject: **Kenneth Hahn Park User Education and  
Wildlife Protection Plan**

**Board of Directors**

Amy Rosenstein, President  
Sandrine Cassidy Schmitt, Vice President  
Deborah Gregory, Secretary  
Rich Hibbs, Treasurer  
Lucy Blake-Elahi  
Bobbi Gold  
Erick Perez, BCR Club President

Irene Reingold  
Mim Shapiro

**Advisory Council**

Michele Bigelow  
Steven Coker  
Evan Dumas  
Bob Hadley  
Blake Hottle  
Scott Malsin  
Dino Parks  
Gerald Sallus  
Marina Tidwell  
David Valdez

Jim Lamm, President Emeritus

Dear Mr. Ridley-Thomas,

On behalf of Ballona Creek Renaissance (BCR), I am writing to express our enthusiastic support for Los Angeles Audubon in the development of their new program: Kenneth Hahn Park User Education and Wildlife Protection Plan.

As a non-profit organization dedicated to facilitating the long-term renewal of Ballona Creek and its watershed, BCR has worked alongside Los Angeles Audubon students and staff at volunteer events in the Baldwin Hills helping to restore native habitat. We applaud their leadership and environmental education programs which are providing valuable information to the community, promoting stewardship, and improving urban park lands.

From our perspective, Los Angeles Audubon is an excellent candidate for your consideration in funding support.

If you need additional information regarding my experience with Los Angeles Audubon, please feel free to contact me.

Sincerely,

Amy Rosenstein, President

***Ballona Creek Renaissance (BCR)...Connecting Creek and Community***

*A Culver City-based 501(c)(3) nonprofit organization, Federal Tax ID No. 95-4764614 P.O. Box 843,  
Culver City CA 90232, [www.ballonacreek.org](http://www.ballonacreek.org)*



To Whom it may concern,

I am writing in support of Los Angeles Audubon as they seek grant funding for their new program - *Kenneth Hahn Park User Education and Wildlife Protection Plan*.

The UCLA Community Service Commission (CSC) is a branch of the student government committed to community outreach and making service an integral part of our student's lives. CSC is also the largest completely student-run, student-initiated community service organization in the nation. For the past several years, we have periodically collaborated with the Los Angeles Audubon Society to organize volunteer events for UCLA students to do habitat restoration. Our student participants have always returned deeply inspired by the work that LA Audubon does for our local environment. We value these collaborations because they provide an opportunity for students to volunteer for an issue about which they are genuinely passionate.

We also appreciate that LA Audubon took the time to educate our group about the park, the plants, wildlife and the watershed. It is so important that young volunteers are educated about the environment, in order to become prepared to engage in advocacy to complement their direct service efforts. This approach — both educational and experiential— is why UCLA students enjoy volunteering with LA Audubon and why they will continue to do so in the future.

I believe that Los Angeles Audubon is an excellent candidate for your consideration in grant support.

Please feel free to contact me if I can be of further assistance.

Sincerely,

*Claire Crinion*

Claire Crinion  
UCLA CSC | Internal Programs Director  
claire.crinion@gmail.com



February 2, 2016

To Whom it may concern,

I am writing in support of Los Angeles Audubon as they seek funding for their new program - *Kenneth Hahn Park User Education and Wildlife Protection Plan*.

UCLA students and alumni have volunteered with LA Audubon at several restoration events at Baldwin Hills. We thoroughly enjoyed the experience, helping to improve the park environment, and learning about the history of the Baldwin Hills and how the park came to be. For many of us, it was the first time visiting the Baldwin Hills area and it made a lasting impression on us - the beauty of the park and the good work of Los Angeles Audubon. We are proud to have played a role in improving a wonderful urban park!

I believe that Los Angeles Audubon is an excellent candidate for your consideration in grant support.

Please feel free to contact me if I can be of further assistance.

Sincerely,



Shannon Regan Hickman  
Director  
UCLA Volunteer Center

# BALDWIN HILLS CONSERVANCY

5120 West Goldleaf Circle, Suite 290  
Los Angeles, CA 90056  
(323) 290-5270 Phone  
[www.bhc.ca.gov](http://www.bhc.ca.gov)

---

## Memorandum

**To:** Governing Board

**From:** David McNeill, Executive Officer

**Date:** April 15, 2016

**Re:** Item 7: Presentation on AB-2729 Williams & Thurman: Idle Oil Well Safety Regulations – Jason Marshall, Chief Deputy Director, State of California, Department of Conservation

**Recommendation:** No action required

**Background:** The Department of Conservation helped craft Assembly Bill 2729 to address over 21,000 idle oil wells throughout the State of California (see Attachment #1 Fact Sheet.) According to the Department of Oil, Gas and Geothermal Resources (DOGGR), this bill will create disincentive for operators to maintain large idle well inventories; will ensure funds are available to plug and abandon idle wells in the event they are deserted; and will help improve public perception of oil and gas operations.

The bill passed the Assembly Committee on Natural Resources on April 6, 2016, and was re-referred to the Assembly Environmental Safety and Toxic Materials Committee for a hearing on April 12<sup>th</sup>.



## IDLE WELL FACT SHEET

### OVERVIEW

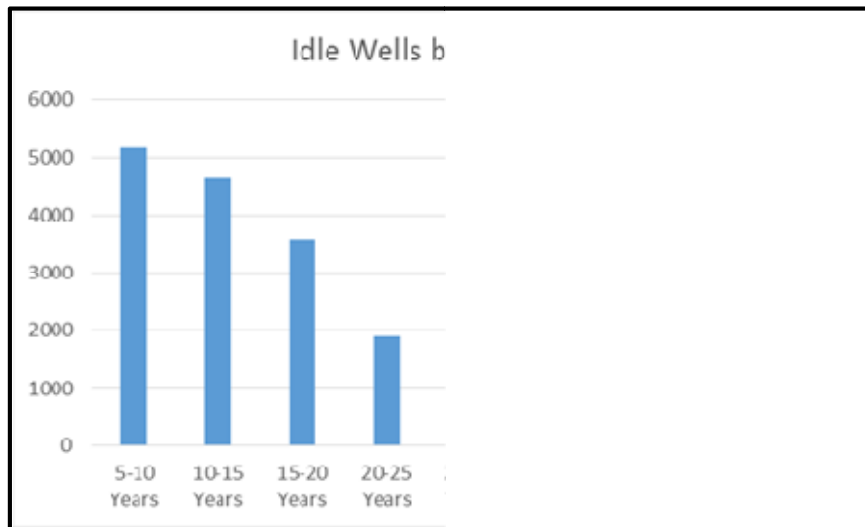
In California, approximately 21,000 oil and gas wells are idle. This means that they have not produced or injected for a period of 6 months, for five or more years.

There are legitimate reasons for an operator to idle a well in the short term. However, the current definition of idle wells allows for wells to remain idle for long periods of time with no legitimate cause, other than cost savings for the operator compared to plugging the well. The longer a well remains idle, the increased likelihood that this well will be orphaned by the operator.

Idle wells pose a risk to public health and environment. They can lead to groundwater pollution and leak methane, a potent greenhouse gas. Current laws and regulations do not adequately mitigate these risks.

### PROBLEM

Idle wells can result in methane leaks and groundwater contamination in multiple ways. Gas and contaminated water can creep through faults due to poor well integrity. They can leak through the well itself because of improperly maintained wellbores. Subsidence can lead to cracked or collapsed well casings in both oil and groundwater wells.



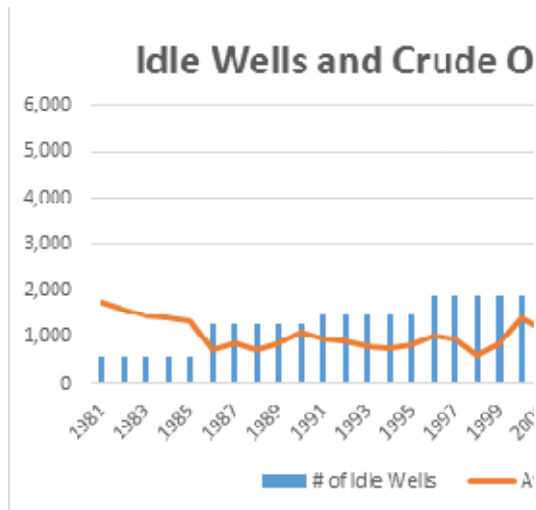
Existing regulations only require that idle wells be periodically tested to determine fluid levels relative to known underground freshwater reservoirs. However, this testing does not begin until a well has been idle for five years, and this testing would not necessarily show if an idle well was damaged or otherwise leaking methane or contaminates.

Between 2011 and 2015, the Division's District 1 reported 56 idle wells that failed their mechanical integrity tests, which include pressure tests, nitrogen tests, and temperature surveys. In each case, these wells had the potential to contaminate beneficial use waters. If only the required fluid level testing had been performed, these damaged wells would have remained unrepaired and unreported.

Oil fields are at an enhanced risk of subsidence due to continuous removal of oil and water. Subsidence in itself can create new faults and fracture zones, creating even more paths for methane to migrate to the surface. Groundwater levels in California are at record lows, resulting in

dramatic subsidence. Land in the Tulare basin near Corcoran sank 13 inches in eight months; a portion of the Sacramento Valley is sinking approximately half an inch per month. Long-term subsidence has already destroyed thousands of private groundwater well casings.

The Los Angeles Basin alone has more than seventy oilfields underlying urban development. Many homeowners experience surface expressions of oil in their neighborhoods and on their properties, which in addition to creating an environmental safety hazard, can exacerbate the risk and strength of wildfires. Studies have shown that methane emissions in the LA Basin are approximately 35% higher than previously estimated by US EPA and CARB. Gas seeps, in addition to health risks, present a risk of serious explosion. The Air Resources Board has begun researching idle wells, but does not yet have any regulations directly addressing the issue.



Due to low idle well fees and bonding requirements, oil and gas operators have little incentive to properly plug and abandon low performing wells. It is more cost effective for them to make bond payments or pay fees than it is to cover the costs of proper plugging and abandonment. This

has led to an increasing number of wells remaining idle for decades, eventually becoming orphan wells with no accountable operator. As domestic production declines, private funding for plugging wells may be harder to find.

---

## OTHER STATES

The Interstate Oil and Gas Compact Commission found a dramatic increase of idle wells nationwide, from 215,000 in 1992 to 285,000 in 1996. The Commission estimates approximately 50,000 orphaned wells nationwide. The Division similarly reported an increase of at least 2,000 idle wells between 1996 and 1999. During periods where oil prices have declined, many more wells have become idle.

In Ohio and Texas, orphaned wells account for 1/5 incidences of oil and gas groundwater contamination.

A USGS study from 1988 found that brine from abandoned wells polluted the groundwater supply for 50,000 residents near Fort Knox, Kentucky.

Pennsylvania has documented at least seven cases where fracking a new well caused natural gas and fluid leaks from nearby abandoned wells.

Researchers at Stanford estimated that emissions from abandoned wells in Pennsylvania account for as much as 10% of methane released – about the same amount as active oil and gas production.

In Pennsylvania's Oil Creek State Park, thousands of abandoned and orphaned wells pose physical and environmental danger where sinkholes have developed.

---

California is a significant outlier, allowing wells to remain idle for 25 years, while Nebraska, Kansas, and North Carolina allow wells to remain idle for three months or less. Most states allow wells to remain idle for six months to one year.

California, Kansas, Louisiana, Arizona, Tennessee, and Florida have the greatest percentage of idle wells, which compromise more than 36% of each state's existing wells.

---

## **SOLUTION**

In order to adequately address the problem of idle wells, incentives need to be adjusted to ensure that operators are motivated to manage wells safely. To do this, the Division of Oil, Gas, and Geothermal Resources within the Department of Conservation recommends the following statutory changes:

- Redefine “idle well” and “long-term idle well” to ensure that testing and monitoring - requirements start sooner and that fees will serve as an incentive to properly plug and abandon uneconomical wells more quickly.
- Increase bonding requirements to ensure they can cover the costs of plugging and - abandonment and facility site remediation. Require that bonds stay in place until the well is plugged and abandoned.
- Increase idle well fees, and remove the option for operators to post a larger blanket bond to - cover idle wells as an alternative to paying fees. This will influence how operators evaluate whether or not to leave a well idle or not. Currently, over 4,700 wells have been idle for 25 years or more. This is because it is simply less expensive pay fees or bond payments than - plug and abandon a well.
- Allow operators to avoid paying idle well fees if they provide an acceptable plan to the Oil and Gas Supervisor to aggressively reduce their inventory of idle wells. The bill would provide variable plug and abandonment targets based on the size of the operators.

Put simply, under the proposal, operators will either be required to pay increasingly higher fees or start plugging and abandoning idle wells.

**ASSEMBLY BILL**

**No. 2729**

---

**Introduced by Assembly Members Williams and Thurmond**

February 19, 2016

---

An act to amend Sections 3008, 3208.1, and 3238 of, to amend, repeal, and add Sections 3202, 3204, 3205, 3206, 3207, and 3208 of, and to add Section 3016 to, the Public Resources Code, relating to oil and gas, and making an appropriation therefor.

LEGISLATIVE COUNSEL'S DIGEST

AB 2729, as introduced, Williams. Oil and gas: operations.

(1) Under existing law, the Division of Oil, Gas, and Geothermal Resources in the Department of Conservation regulates the drilling, operation, maintenance, and abandonment of oil and gas wells in the state. Existing law requires the State Oil and Gas Supervisor to supervise the drilling, operation, maintenance, and abandonment of wells and the operation, maintenance, and removal or abandonment of tanks and facilities related to oil and gas production within an oil and gas field, so as to prevent damage to life, health, property, and natural resources, as provided; to permit owners and operators of wells to utilize all known methods and practices to increase the ultimate recovery of hydrocarbons; and to perform the supervisor's duties in a manner that encourages the wise development of oil and gas resources to best meet oil and gas needs in this state. Existing law defines, among other things, "active observation well," "idle well," and "long-term idle well" for the purposes of these provisions. Existing law provides that an active observation well is not an idle well.

This bill would limit the definition of "active observation well," and would expand the definitions of "idle well" and "long-term idle well"

by no longer excluding active observation wells from their definitions. The bill would provide that the abandoned underground personal property of an operator becomes the property of the mineral interest owner.

(2) Existing law establishes the Hazardous and Idle-Deserted Well Abatement Fund in the State Treasury. Existing law directs fee moneys collected from operators of idle wells to be deposited in the fund. The moneys in the fund are continuously appropriated to the department for expenditure without regard to fiscal year, to mitigate a hazardous or potentially hazardous condition by well plugging and abandonment.

This bill would instead provide that the moneys in the fund are continuously appropriated to the department for expenditure without regard to fiscal year to mitigate a hazardous or potentially hazardous condition, by well plugging and abandonment, decommissioning attendant production facilities, or both, at a well of a fee-paying operator. Because the bill would provide for the deposit of additional moneys in a continuously appropriated fund by expanding the definition of an “idle well,” described above, and would change the purposes for which moneys in a continuously appropriated fund may be used, it would make an appropriation.

(3) Existing law provides that a well is properly abandoned when it has been shown, to the satisfaction of the supervisor, that all proper steps have been taken to isolate all oil-bearing or gas-bearing strata encountered in the well, and to protect underground or surface water suitable for irrigation or farm or domestic purposes from the infiltration or addition of any detrimental substance and to prevent subsequent damage to life, health, property, and other resources.

This bill would provide that proper steps include the plugging of the well, decommissioning the attendant production facilities of the well, or both, if determined necessary by the supervisor.

(4) Existing law authorizes the supervisor or district deputy to order the reabandonment of any previously abandoned well if the supervisor or the district deputy has reason to question the integrity of the previous abandonment. Existing law prescribes the circumstances in which the operator responsible for plugging and abandoning a deserted well is not responsible for the reabandonment of the well. Under existing law, a person who fails to comply with an order issued under these provisions and other requirements relating to the regulation of oil or gas operations is guilty of a misdemeanor.

This bill instead would authorize the supervisor or district deputy to order, or permit, the reabandonment of any previously abandoned well if the supervisor or the district deputy has reason to question the integrity of the previous abandonment, or if the well is not accessible or visible. The bill would revise the circumstances in which the operator responsible for plugging and abandoning a deserted well is not responsible for the reabandonment of the well, and would provide that being responsible for the reabandonment means that the responsible party or parties shall complete the reabandonment and be subject to certain requirements applicable to an operator of a well. Because a violation of an order issued under these provisions would be a crime, the bill would impose a state-mandated local program.

(5) Existing law authorizes the supervisor to order certain operations to be carried out on any property in the vicinity of which, or on which, is located any well that the supervisor determines to be either a hazardous or idle-deserted well, as specified.

This bill would authorize a party to plug and abandon a well that the supervisor has determined to be either a hazardous or idle-deserted well by obtaining all necessary rights to the well, and would require that party to be subject to certain requirements applicable to an operator of a well, file with the supervisor the appropriate bond or deposit, and complete the abandonment, as specified. Because a violation of an order issued under these provisions or of certain requirements related to the regulation of oil and gas would be a crime, the bill would impose a state-mandated local program.

(6) Existing law prescribes requirements related to acquiring the right to operate a well or production facility, filing with the supervisor an individual indemnity bond for each well drilled, redrilled, deepened, or permanently altered, filing with the supervisor a blanket indemnity bond in lieu of individual indemnity bonds, operators of idle wells not covered under certain indemnity bonds, and the cancellation of an individual or blanket indemnity bond. Existing law directs fee moneys collected from operators of idle wells to be deposited in the Hazardous and Idle-Deserted Well Abatement Fund, a continuously appropriated fund.

Commencing January 1, 2018, this bill would revise and recast these provisions to, among other things, increase the amounts of the required individual and blanket indemnity bonds, require a person acquiring the right to operate a well or production facility to file a specified individual or blanket indemnity bond for each well, increase the fees required to



be filed for each idle well if the operator does not file a plan with the supervisor to provide for the management and elimination of all its long-term idle wells, repeal the ability of an operator to provide an escrow account or indemnity bond for each idle well in lieu of paying a fee or filing a plan, and revise the conditions for the cancellation of an individual or blanket indemnity bond. Because the bill would provide for the deposit of additional moneys in a continuously appropriated fund by increasing the amount of fees required to be filed for each idle well, it would make an appropriation. Because a violation of an order issued under these provisions or of certain requirements related to the regulation of oil and gas would be a crime, the bill would impose a state-mandated local program.

This bill would require the division, by June 1, 2018, to review and evaluate, and update as appropriate, its regulations pertaining to idle wells, as specified.

(7) The California Constitution requires the state to reimburse local agencies and school districts for certain costs mandated by the state. Statutory provisions establish procedures for making that reimbursement.

This bill would provide that no reimbursement is required by this act for a specified reason.

Vote: majority. Appropriation: yes. Fiscal committee: yes.  
State-mandated local program: yes.

*The people of the State of California do enact as follows:*

- 1 SECTION 1. Section 3008 of the Public Resources Code is
- 2 amended to read:
- 3 3008. (a) "Well" means any oil or gas well or well for the
- 4 discovery of oil or gas; any well on lands producing or reasonably
- 5 presumed to contain oil or gas; any well drilled for the purpose of
- 6 injecting fluids or gas for stimulating oil or gas recovery,
- 7 repressuring or pressure maintenance of oil or gas reservoirs, or
- 8 disposing of waste fluids from an oil or gas field; any well used
- 9 to inject or withdraw gas from an underground storage facility; or
- 10 any well drilled within or adjacent to an oil or gas pool for the
- 11 purpose of obtaining water to be used in production stimulation
- 12 or repressuring operations.
- 13 (b) "Prospect well" or "exploratory well" means any well drilled
- 14 to extend a field or explore a new, potentially productive reservoir.

1 (c) “Active observation well” means a well being used for the  
2 sole purpose of gathering reservoir data, such as pressure or  
3 temperature in a reservoir being currently produced or injected by  
4 the operator, and the data is gathered *and reported* at least once  
5 every ~~three years~~ *month*.

6 (d) “Idle well” means any well that ~~has not produced oil or~~  
7 ~~natural gas or has not been used for injection for six consecutive~~  
8 ~~months of continuous operation during the last five or more years.~~  
9 ~~An idle well does not include an active observation well. had six~~  
10 ~~consecutive months of not producing oil or natural gas or being~~  
11 ~~used for injection. An idle well continues to be an idle well until~~  
12 ~~it has been properly abandoned in accordance with Section 3208~~  
13 ~~or it has been shown to the division’s satisfaction that, since the~~  
14 ~~well became an idle well, the well has maintained production of~~  
15 ~~oil or gas or been used for injection for a continuous six-month~~  
16 ~~period. An idle well does not include a well used to inject or~~  
17 ~~withdraw gas from an underground storage facility.~~

18 (e) “Long-term idle well” means any well that ~~has not produced~~  
19 ~~oil or natural gas or has not been used for injection for six~~  
20 ~~consecutive months of continuous operation during the last 10 or~~  
21 ~~more years. A long-term idle well does not include an active~~  
22 ~~observation well. been an idle well for five or more years.~~

23 SEC. 2. Section 3016 is added to the Public Resources Code,  
24 to read:

25 3016. For purposes of this chapter, abandoned underground  
26 personal property of an operator shall become the property of the  
27 mineral interest owner.

28 SEC. 3. Section 3202 of the Public Resources Code is amended  
29 to read:

30 3202. (a) A person who acquires the right to operate a well  
31 or production facility, whether by purchase, transfer, assignment,  
32 conveyance, exchange, or other disposition, shall, as soon as it is  
33 reasonably possible, but not later than the date when the acquisition  
34 of the well or production facility becomes final, notify the  
35 supervisor or the district deputy, in writing, of the person’s  
36 operation. The acquisition of a well or production facility shall not  
37 be recognized as complete by the supervisor or the district deputy  
38 until the new operator provides all of the following material:

39 (a)

1 (1) The name and address of the person from whom the well or  
2 production facility was acquired.

3 ~~(b)~~

4 (2) The name and location of the well or production facility,  
5 and a description of the land upon which the well or production  
6 facility is situated.

7 ~~(e)~~

8 (3) The date when the acquisition becomes final.

9 ~~(d)~~

10 (4) The date when possession was or will be acquired.

11 ~~(e)~~

12 (5) An indemnity bond for each idle well. The bond shall be in  
13 an amount as provided in Section 3204 or 3205. The conditions  
14 of the bond shall be the same as the conditions stated in Section  
15 3204. An operator that has provided an individual bond required  
16 by this subdivision in an amount as provided in Section 3204 shall  
17 not be required additionally to comply with the requirements of  
18 Section 3206. An operator who has provided a blanket indemnity  
19 bond in the minimum amount required in subdivision (a) or (b) of  
20 Section 3205 shall additionally comply with Section 3206 for any  
21 idle wells not covered by a bond provided under Section 3204.

22 (b) *This section shall remain in effect only until January 1, 2018,*  
23 *and as of that date is repealed, unless a later enacted statute, that*  
24 *is enacted before January 1, 2018, deletes or extends that date.*

25 SEC. 4. Section 3202 is added to the Public Resources Code,  
26 to read:

27 3202. (a) A person who acquires the right to operate a well or  
28 production facility, whether by purchase, transfer, assignment,  
29 conveyance, exchange, or other disposition, shall, as soon as it is  
30 reasonably possible, but not later than the date when the acquisition  
31 of the well or production facility becomes final, notify the  
32 supervisor or the district deputy, in writing, of the person's  
33 operation. The acquisition of a well or production facility shall not  
34 be recognized as complete by the supervisor or the district deputy  
35 until the new operator provides all of the following material:

36 (1) The name and address of the person from whom the well or  
37 production facility was acquired.

38 (2) The name and location of the well or production facility,  
39 and a description of the land upon which the well or production  
40 facility is situated.

1 (3) The date when the acquisition becomes final.

2 (4) The date when possession was or will be acquired.

3 (5) An indemnity bond for each well as required under Section  
4 3204 or 3205.

5 (b) This section shall become operative on January 1, 2018.

6 SEC. 5. Section 3204 of the Public Resources Code is amended  
7 to read:

8 3204. (a) An operator who, on or after January 1, 2014,  
9 engages in the drilling, redrilling, deepening, or in any operation  
10 permanently altering the casing, of a well shall file with the  
11 supervisor an individual indemnity bond for each well so drilled,  
12 redrilled, deepened, or permanently altered, in the following  
13 amount:

14 (1) Twenty-five thousand dollars (\$25,000) for each well that  
15 is less than 10,000 feet deep.

16 (2) Forty thousand dollars (\$40,000) for each well that is 10,000  
17 or more feet deep.

18 (b) The bond shall be filed with the supervisor at the time of  
19 the filing of the notice of intention to perform work on the well,  
20 as provided in Section 3203. The bond shall be executed by the  
21 operator, as principal, and by an authorized surety company, as  
22 surety, on the condition that the principal named in the bond shall  
23 faithfully comply with all the provisions of this chapter, in drilling,  
24 redrilling, deepening, or permanently altering the casing in any  
25 well or wells covered by the bond, and shall secure the state against  
26 all losses, charges, and expenses incurred by it to obtain the  
27 compliance by the principal named in the bond.

28 (c) The conditions of the bond shall be stated in substantially  
29 the following language: "If the \_\_\_\_\_, the above bounden principal,  
30 shall well and truly comply with all the provisions of Division 3  
31 (commencing with Section 3000) of the Public Resources Code  
32 and shall obey all lawful orders of the State Oil and Gas Supervisor  
33 or the district deputy or deputies, subject to subsequent appeal as  
34 provided in that division, and shall pay all charges, costs, and  
35 expenses incurred by the supervisor or the district deputy or  
36 deputies in respect of the well or wells or the property or properties  
37 of the principal, or assessed against the well or wells or the property  
38 or properties of the principal, in pursuance of the provisions of  
39 that division, then this obligation shall be void; otherwise, it shall  
40 remain in full force and effect."

1     (d) *This section shall remain in effect only until January 1, 2018,*  
2     *and as of that date is repealed, unless a later enacted statute, that*  
3     *is enacted before January 1, 2018, deletes or extends that date.*

4     SEC. 6. Section 3204 is added to the Public Resources Code,  
5     to read:

6     3204. (a) An operator who, on or after January 1, 2018,  
7     engages in the drilling, redrilling, deepening, or in any operation  
8     permanently altering the casing, of a well, or who acquires a well,  
9     shall file with the supervisor an individual indemnity bond for  
10    each well so drilled, redrilled, deepened, or permanently altered,  
11    or acquired in the following amount:

12    (1) Fifty thousand dollars (\$50,000) for each well that is less  
13    than 10,000 feet deep.

14    (2) Eighty thousand dollars (\$80,000) for each well that is  
15    10,000 or more feet deep.

16    (b) The bond shall be filed with the supervisor at the time of  
17    the filing of the notice of intention to perform work on the well,  
18    as provided in Section 3203, or at the time of acquisition of the  
19    well, as provided in Section 3202. The bond shall be executed by  
20    the operator, as principal, and by an authorized surety company,  
21    as surety, on the condition that the principal named in the bond  
22    shall faithfully comply with all the provisions of this chapter, in  
23    drilling, redrilling, deepening, or permanently altering the casing  
24    in any well or wells covered by the bond, and shall secure the state  
25    against all losses, charges, and expenses incurred by it to obtain  
26    the compliance by the principal named in the bond.

27    (c) The conditions of the bond shall be stated in substantially  
28    the following language: "If the \_\_\_\_\_, the above bounden principal,  
29    shall well and truly comply with all the provisions of Division 3  
30    (commencing with Section 3000) of the Public Resources Code  
31    and shall obey all lawful orders of the State Oil and Gas Supervisor  
32    or the district deputy or deputies, subject to subsequent appeal as  
33    provided in that division, and shall pay all charges, costs, and  
34    expenses incurred by the supervisor or the district deputy or  
35    deputies in respect of the well or wells or the property or properties  
36    of the principal, or assessed against the well or wells or the property  
37    or properties of the principal, in pursuance of the provisions of  
38    that division, then this obligation shall be void; otherwise, it shall  
39    remain in full force and effect."

40    (d) This section shall become operative on January 1, 2018.

1 SEC. 7. Section 3205 of the Public Resources Code is amended  
2 to read:

3 3205. (a) An operator who engages in the drilling, redrilling,  
4 deepening, or in any operation permanently altering the casing, of  
5 20 or more wells at any time, may file with the supervisor one  
6 blanket indemnity bond to cover all the operations in any of its  
7 wells in the state in lieu of an individual indemnity bond for each  
8 operation as required by Section 3204. The bond shall be executed  
9 by the operator, as principal, and by an authorized surety company,  
10 as surety, and shall be in substantially the same language and upon  
11 the same conditions as provided in Section 3204, except as to the  
12 difference in the amount. The bond shall be provided in one of the  
13 following amounts, as applicable:

14 (1) The sum of four hundred thousand dollars (\$400,000), which  
15 does not include the bond or fee required in Section 3206.

16 (2) The sum of two hundred thousand dollars (\$200,000), which  
17 does not include the bond or fee required in Section 3206, for any  
18 operator having 50 or fewer wells in the state, exclusive of properly  
19 abandoned wells.

20 (3) The sum of two million dollars (\$2,000,000), which does  
21 include the bond or fee required in Section 3206.

22 (b) A blanket cash bond or blanket surety bond provided prior  
23 to January 1, 2014, shall be increased to comply with this section  
24 on or before January 1, 2016.

25 (c) *This section shall remain in effect only until January 1, 2018,*  
26 *and as of that date is repealed, unless a later enacted statute, that*  
27 *is enacted before January 1, 2018, deletes or extends that date.*

28 SEC. 8. Section 3205 is added to the Public Resources Code,  
29 to read:

30 3205. (a) An operator who engages in the drilling, redrilling,  
31 deepening, or in any operation permanently altering the casing, of  
32 20 or more wells at any time, may file with the supervisor one  
33 blanket indemnity bond to cover all the operations in any of its  
34 wells in the state in lieu of an individual indemnity bond for each  
35 operation as required by Section 3204. The bond shall be executed  
36 by the operator, as principal, and by an authorized surety company,  
37 as surety, and shall be in substantially the same language and upon  
38 the same conditions as provided in Section 3204, except as to the  
39 difference in the amount. The bond shall be provided in one of the  
40 following amounts, as applicable:

1 (1) The sum of four hundred thousand dollars (\$400,000), for  
2 an operator having 50 or fewer wells in the state, exclusive of  
3 properly abandoned wells.

4 (2) The sum of two million dollars (\$2,000,000), for any  
5 operator having more than 50 wells in the state, exclusive of  
6 properly abandoned wells.

7 (b) A blanket cash bond or blanket surety bond provided prior  
8 to January 1, 2018, shall be increased to comply with this section.

9 (c) This section shall become operative on January 1, 2018.

10 SEC. 9. Section 3206 of the Public Resources Code is amended  
11 to read:

12 3206. (a) The operator of any idle well not covered by an  
13 indemnity bond provided under Section 3204, *paragraph (3) of*  
14 *subdivision (e) (a)* of Section 3205, or subdivision (a) of Section  
15 3205.2 shall do one of the following:

16 (1) File with the supervisor an annual fee for each idle well  
17 equal to the sum of the following amounts:

18 (A) One hundred dollars (\$100) for each idle well that has been  
19 idle for less than 10 years.

20 (B) Two hundred fifty dollars (\$250) for each idle well that has  
21 been idle for 10 years or longer, but less than 15 years.

22 (C) Five hundred dollars (\$500) for each idle well that has been  
23 idle for 15 years or longer.

24 (2) Provide an escrow account in a federally insured bank that  
25 does business in, and has an office in, the State of California, by  
26 depositing the amount of five thousand dollars (\$5,000) for each  
27 idle well, in the following manner:

28 (A) The escrow account shall be accessible only by the  
29 supervisor and the money shall be retained in the escrow account  
30 exclusively for use by the supervisor for plugging and abandoning  
31 the operator's idle wells that become deserted pursuant to Section  
32 3237.

33 (B) The money in the escrow account may be released only by  
34 the supervisor and only in amounts covering any idle well that has  
35 properly been plugged and abandoned, returned to production or  
36 injection or converted to an active observation well, if that money  
37 remaining in the escrow account is sufficient to fully fund the  
38 required deposits for all of the operator's remaining idle wells.

39 (C) The required deposit for each idle well shall be funded  
40 completely within 10 years of the date the well becomes idle, or

1 10 years from January 1, 1999, for any well that is idle as of  
2 January 1, 1999.

3 (D) The operator shall fund the escrow account at the rate of at  
4 least five hundred dollars (\$500) per well per year.

5 (E) Failure of an operator in any year to provide the minimum  
6 funding for any idle well shall result in the institution of the annual  
7 fees required by paragraph (1) for that idle well, and all money  
8 already on deposit for that idle well shall be treated as previously  
9 paid annual fees and shall be deposited into the Hazardous and  
10 Idle-Deserted Well Abatement Fund specified in subdivision (b)  
11 for expenditure pursuant to that subdivision.

12 (3) File with the supervisor an indemnity bond that provides  
13 the sum of five thousand dollars (\$5,000) for each idle well. The  
14 bond shall be subject to the conditions provided in Section 3204.

15 (4) On or before July 1, 1999, file a plan with the supervisor to  
16 provide for the management and elimination of all long-term idle  
17 wells not covered under paragraph (1), (2), or (3).

18 (A) For the purposes of the plan required by this paragraph,  
19 elimination of an idle well shall be accomplished when the well  
20 meets the requirements of Section 3208.

21 (B) A plan filed pursuant to this paragraph shall meet all of the  
22 following requirements and conditions:

23 (i) The plan shall cover a time period of no more than 10 years  
24 and may be renewed annually thereafter, subject to approval by  
25 the supervisor.

26 (ii) The plan shall be reviewed for performance annually by the  
27 supervisor, and be subject to amendment with the approval of the  
28 supervisor.

29 (iii) The required rate of long-term idle well elimination shall  
30 be based upon the number of idle wells under the control of an  
31 operator on January 1 of each year, as specified in ~~clause IV:~~ (iv).  
32 The supervisor may require additional well testing requirements  
33 as part of the plan.

34 (iv) The plan shall require that operators with 10 or fewer idle  
35 wells eliminate at least one long-term idle well every two years;  
36 operators with 11 to 20, inclusive, idle wells eliminate at least one  
37 long-term idle well each year; operators with 21 to 50, inclusive,  
38 idle wells eliminate at least two long-term idle wells each year;  
39 operators with 51 to 100, inclusive, idle wells eliminate at least  
40 five long-term idle wells each year; operators with 101 to 250,



1 inclusive, idle wells eliminate at least 10 long-term wells each  
2 year; and operators with more than 250 idle wells eliminate at least  
3 4 percent of their long-term idle wells each year.

4 (v) An operator who complies with the plan is exempt from any  
5 increased idle well bond or fee requirements.

6 (vi) An operator who fails to comply with the plan, as  
7 determined by the supervisor after the annual performance review,  
8 is not eligible to use the requirements of this paragraph, for  
9 purposes of compliance with this section, for any of its idle wells.

10 That operator shall immediately provide one of the alternatives in  
11 paragraph (1), (2), or (3) for its idle wells and may not propose a  
12 new idle well plan for the next five years. An operator may appeal  
13 to the director pursuant to Article 6 (commencing with Section  
14 3350) regarding the supervisor's rejection of a plan and plan  
15 amendments and the supervisor's determinations of the operator's  
16 failure to comply with a plan.

17 (b) All fees received under this section shall be deposited in the  
18 Hazardous and Idle-Deserted Well Abatement Fund, which is  
19 hereby created in the State Treasury. Notwithstanding Section  
20 13340 of the Government Code, the moneys in the Hazardous and  
21 Idle-Deserted Well Abatement Fund are hereby continuously  
22 appropriated to the department for expenditure without regard to  
23 fiscal year, to mitigate a hazardous or potentially hazardous  
24 ~~condition~~ condition, by well plugging and ~~abandonment~~  
25 *abandonment, decommissioning the attendant production facilities,*  
26 *or both, at a well of an operator subject to the requirements of*  
27 *this section.*

28 (c) Failure to file, for any well, the bond or fee required under  
29 this section shall be conclusive evidence of desertion of the well,  
30 permitting the supervisor to order the well abandoned.

31 (d) Nothing in this section prohibits a local agency from  
32 collecting a fee for regulation of wells.

33 (e) *This section shall remain in effect only until January 1, 2018,*  
34 *and as of that date is repealed, unless a later enacted statute, that*  
35 *is enacted before January 1, 2018, deletes or extends that date.*

36 SEC. 10. Section 3206 is added to the Public Resources Code,  
37 to read:

38 3206. (a) The operator of any idle well shall do either of the  
39 following:

1 (1) No later than January 31 of each year, for each idle well that  
2 was an idle well at any time in the last calendar year, file with the  
3 supervisor an annual fee equal to the sum of the following amounts:

4 (A) Five hundred dollars (\$500) for each idle well that has been  
5 idle for less than three years.

6 (B) Two thousand dollars (\$2,000) for each idle well that has  
7 been idle for three years or longer, but less than five years.

8 (C) Five thousand dollars (\$5,000) for each idle well that has  
9 been idle for five years or longer, but less than 10 years.

10 (D) Ten thousands dollars (\$10,000) for each idle well that has  
11 been idle for 10 years or longer.

12 (2) File a plan with the supervisor to provide for the management  
13 and elimination of all long-term idle wells.

14 (A) For the purposes of the plan required by this paragraph,  
15 elimination of an idle well shall be accomplished when the well  
16 has been properly abandoned in accordance with Section 3208, or  
17 it has been shown to the division's satisfaction that, since the well  
18 became an idle well, the well has maintained production of oil or  
19 gas or been used for injection for a continuous six-month period.

20 (B) A plan filed pursuant to this paragraph shall meet all of the  
21 following requirements and conditions:

22 (i) The plan shall cover a time period of no more than five years  
23 and shall be subject to approval by the supervisor who may  
24 prioritize the order in which idle wells are addressed.

25 (ii) The plan shall be reviewed for performance annually by the  
26 supervisor, and be subject to amendment by the supervisor, or by  
27 the operator with the approval of the supervisor.

28 (iii) The required rate of long-term idle well elimination shall  
29 be based upon the number of idle wells under the control of an  
30 operator on January 1 of each year, as specified in clause (iv). The  
31 supervisor may require additional well testing requirements as part  
32 of the plan.

33 (iv) Unless and until the operator has no long-term idle wells,  
34 the plan shall require that operators with 10 or fewer idle wells  
35 eliminate at least three long-term idle wells each year; operators  
36 with 11 to 20, inclusive, idle wells eliminate at least six long-term  
37 idle wells each year; operators with 21 to 50, inclusive, idle wells  
38 eliminate at least 12 long-term idle wells each year; operators with  
39 51 to 100, inclusive, idle wells eliminate at least 30 long-term idle  
40 wells each year; operators with 101 to 250, inclusive, idle wells

1 eliminate at least 60 long-term wells each year; and operators with  
2 more than 250 idle wells eliminate at least 25 percent of their  
3 long-term idle wells each year.

4 (v) An operator who fails to comply with the plan, as determined  
5 by the supervisor after the annual performance review, is not  
6 eligible to use the requirements of this paragraph, for purposes of  
7 compliance with this section, for any of its idle wells. That operator  
8 may not propose a new idle well plan for the next five years. An  
9 operator may appeal to the director pursuant to Article 6  
10 (commencing with Section 3350) regarding the supervisor's  
11 rejection of a plan and plan amendments and the supervisor's  
12 determination of the operator's failure to comply with a plan. If  
13 the supervisor's determination that the operator failed to comply  
14 with the plan is not timely appealed, or if the director upholds the  
15 supervisor's determination upon appeal, then the operator shall  
16 immediately file the fees required under paragraph (1) for each  
17 year that the operator failed to comply with the plan.

18 (b) All fees received under this section shall be deposited in the  
19 Hazardous and Idle-Deserted Well Abatement Fund, which is  
20 hereby created in the State Treasury. Notwithstanding Section  
21 13340 of the Government Code, the moneys in the Hazardous and  
22 Idle-Deserted Well Abatement Fund are hereby continuously  
23 appropriated to the department for expenditure without regard to  
24 fiscal year, to mitigate a hazardous or potentially hazardous  
25 condition, by well plugging and abandonment, decommissioning  
26 the attendant production facilities, or both, at a well of an operator  
27 subject to the requirements of this section.

28 (c) Failure to file, for any well, the fee required under this  
29 section shall be conclusive evidence of desertion of the well,  
30 permitting the supervisor to order the well abandoned.

31 (d) Nothing in this section prohibits a local agency from  
32 collecting a fee for regulation of wells.

33 (e) By June 1, 2018, the division shall review and evaluate, and  
34 update as appropriate, its regulations pertaining to idle wells. The  
35 update shall include idle well testing requirements and provide an  
36 option for temporary or partial well abandonment in lieu of testing  
37 at the discretion of the supervisor.

38 (f) This section shall become operative on January 1, 2018.

39 SEC. 11. Section 3207 of the Public Resources Code is  
40 amended to read:

3207. (a) Any individual or blanket indemnity bond issued in compliance with this chapter may be terminated and canceled and the surety be relieved of all obligations thereunder when the well or wells covered by such bond have been properly completed or abandoned or another valid bond has been substituted therefor. Should the person who has filed a blanket bond properly complete or abandon a portion of his *or her* wells covered by the bond, the bond may be terminated and canceled and the surety be relieved of all obligations thereunder upon the filing by such person of an individual bond for each well which is still not producing or which he *or she* is still engaged in drilling, redrilling, deepening, or permanently altering the casing. Liability as to individual wells that have been completed or drilled and abandoned under a blanket bond may also be terminated.

(b) *This section shall remain in effect only until January 1, 2018, and as of that date is repealed, unless a later enacted statute, that is enacted before January 1, 2018, deletes or extends that date.*

SEC. 12. Section 3207 is added to the Public Resources Code, to read:

3207. (a) Any individual or blanket indemnity bond issued in compliance with this chapter may be terminated and canceled and the surety relieved of all obligations thereunder when the well or wells covered by such bond have been properly abandoned pursuant to Section 3208, or another valid bond has been substituted therefor. Should the person who has filed a blanket bond properly abandon a portion of his or her wells covered by the bond, the bond may be terminated and canceled and the surety relieved of all obligations thereunder upon the filing by such person of an individual bond for each well that is still not abandoned. Liability as to individual wells that have been properly abandoned under a blanket bond may also be terminated.

(b) This section shall become operative on January 1, 2018.

SEC. 13. Section 3208 of the Public Resources Code is amended to read:

3208. (a) For the purposes of Section 3207, a well is properly completed when it has been shown, to the satisfaction of the supervisor, that the manner of producing oil or gas or injecting fluids into the well is satisfactory and that the well has maintained production of oil or gas or injection for a continuous six-month period. A well is properly abandoned when it has been shown, to

1 the satisfaction of the supervisor, that all proper steps have been  
2 taken to isolate all oil-bearing or gas-bearing strata encountered  
3 in the well, and to protect underground or surface water suitable  
4 for irrigation or farm or domestic purposes from the infiltration or  
5 addition of any detrimental substance and to prevent subsequent  
6 damage to life, health, property, and other resources. *For purposes*  
7 *of this subdivision, proper steps include the plugging of the well,*  
8 *decommissioning the attendant production facilities of the well,*  
9 *or both, if determined necessary by the supervisor.*

10 (b) *This section shall remain in effect only until January 1, 2018,*  
11 *and as of that date is repealed, unless a later enacted statute, that*  
12 *is enacted before January 1, 2018, deletes or extends that date.*

13 SEC. 14. Section 3208 is added to the Public Resources Code,  
14 to read:

15 3208. (a) For the purposes of Sections 3206 and 3207, a well  
16 is properly abandoned when it has been shown, to the satisfaction  
17 of the supervisor, that all proper steps have been taken to isolate  
18 all oil-bearing or gas-bearing strata encountered in the well, and  
19 to protect underground or surface water suitable for irrigation or  
20 farm or domestic purposes from the infiltration or addition of any  
21 detrimental substance and to prevent subsequent damage to life,  
22 health, property, and other resources. For purposes of this  
23 subdivision, proper steps include the plugging of the well,  
24 decommissioning the attendant production facilities of the well,  
25 or both, if determined necessary by the supervisor.

26 (b) This section shall become operative on January 1, 2018.

27 SEC. 15. Section 3208.1 of the Public Resources Code is  
28 amended to read:

29 3208.1. (a) To prevent, as far as possible, damage to life,  
30 health, and property, the supervisor or district deputy may ~~order~~  
31 *order, or permit,* the reabandonment of any previously abandoned  
32 well if the supervisor or the district deputy has reason to question  
33 the integrity of the previous ~~abandonment~~. *abandonment, or if the*  
34 *well is not accessible or visible.*

35 ~~The~~

36 (b) *The* operator responsible for plugging and abandoning  
37 deserted wells under Section 3237 shall be responsible for the  
38 reabandonment except in the following situations:

39 (1) The supervisor finds that the operator plugged and  
40 abandoned the well in conformity with the requirements of this

division in effect at the time of the plugging and abandonment and that the well in its current condition presents no immediate danger to life, health, and property but requires additional work solely because the owner of the property on which the well is located proposes construction on the property that would prevent or impede access to the well for purposes of remedying a currently perceived future problem. In this situation, the owner of the property on which the well is located shall *obtain all rights necessary to reabandon the well and* be responsible for the reabandonment.

(2) The supervisor finds that the operator plugged and abandoned the well in conformity with the requirements of this division in effect at the time of the plugging and abandonment and that construction over or near the well preventing or impeding access to it was begun on or after January 1, 1988, and the property owner, developer, or local agency permitting the construction failed either to obtain an opinion from the supervisor or district deputy as to whether the previously abandoned well is required to be reabandoned or to follow the advice of the supervisor or district deputy not to undertake the construction. In this situation, the ~~owner of the property on which~~ *person or entity causing the construction over or near the well is located* shall be responsible for the reabandonment.

(3) The supervisor finds that the operator plugged and abandoned the well in conformity with the requirements of this division in effect at the time of the plugging and abandonment and after that time someone other than the operator or an affiliate of the operator disturbed the integrity of the abandonment in the course of developing the property, and the supervisor is able to determine based on credible evidence, including circumstantial evidence, the party or parties responsible for disturbing the integrity of the abandonment. In this situation, the party or parties responsible for disturbing the integrity of the abandonment shall be responsible for the reabandonment.

(c) *For purposes of this section, being responsible for the reabandonment means that the responsible party or parties shall complete the reabandonment and be subject to the requirements of this chapter as an operator of the well. The responsible party or parties shall file with the supervisor the appropriate bond or security in an amount specified in Section 3204, 3205, or 3205.1.*

1 *If the reabandonment is not completed, the supervisor may act*  
2 *under Section 3226 to complete the work.*

3 ~~(b)~~

4 *(d)* Except for the situations listed in paragraphs (1), (2), and  
5 (3) of subdivision ~~(a)~~; *(b)*, nothing in this section precludes the  
6 application of Article 4.2 (commencing with Section 3250) when  
7 its application would be appropriate.

8 SEC. 16. Section 3238 of the Public Resources Code is  
9 amended to read:

10 3238. (a) For oil and gas produced in this state from a well  
11 that qualifies under Section 3251 or ~~which~~ *that* has been inactive  
12 for a period of at least the preceding five consecutive years, the  
13 rate of the charges imposed pursuant to Sections 3402 and 3403  
14 shall be reduced to zero for a period of 10 years. The supervisor  
15 or district deputy shall not permit an operator to undertake any  
16 work on wells qualifying under Section 3251 unless the mineral  
17 rights owner consents, in writing, to the work plan.

18 (b) An operator who undertakes any work on a well qualifying  
19 under Section 3251 shall have up to 90 days from the date the  
20 operator receives written consent from the supervisor to evaluate  
21 the well. On or before the 90 day evaluation period ends, the  
22 operator shall file with the supervisor a bond or ~~deposit security~~  
23 in an amount specified in Section 3204, 3205, or 3205.1, in  
24 accordance with the requirements of whichever of those sections  
25 is applicable to the well, if the well operations are to continue for  
26 a period in excess of the 90-day evaluation period. The conditions  
27 of the bond shall be the same as the conditions stated in Section  
28 3204.

29 *(c) A party may plug and abandon a well that qualifies under*  
30 *Section 3251 by obtaining all necessary rights to the well. That*  
31 *party shall be subject to the requirements of this chapter as an*  
32 *operator of the well, file with the supervisor the appropriate bond*  
33 *or security in an amount specified in Section 3204, 3205, or 3205.1,*  
34 *and complete the abandonment. If the abandonment is not*  
35 *completed, the supervisor may act under Section 3226 to complete*  
36 *the work.*

37 SEC. 17. No reimbursement is required by this act pursuant to  
38 Section 6 of Article XIII B of the California Constitution because  
39 the only costs that may be incurred by a local agency or school  
40 district will be incurred because this act creates a new crime or

1   infraction, eliminates a crime or infraction, or changes the penalty  
2   for a crime or infraction, within the meaning of Section 17556 of  
3   the Government Code, or changes the definition of a crime within  
4   the meaning of Section 6 of Article XIII B of the California  
5   Constitution.

O



# BALDWIN HILLS CONSERVANCY

5120 West Goldleaf Circle, Suite 290  
Los Angeles, CA 90056  
Phone: (323) 290-5270  
www.bhc.ca.gov

---

## Memorandum

**To:** Governing Board

**From:** Daniel Sciolini, Staff Services Analyst

**Date:** April 15, 2016

**Re:** Item 8: Prop 1 Program Update

In March 2015, the Baldwin Hills Conservancy (BHC) Governing Board approved the Proposition 1 Guidelines for publishing on the California Natural Resources Bond Accountability and BHC websites as well as circulation at workshops for public input.

In January 2016, staff developed a Grant Solicitation Package. The first three (3) rounds of proposal solicitation for the 15/16 Fiscal Year have been completed. The 4<sup>th</sup> and final proposal solicitation round will be May 1 – June 30, 2016. (*See Attachment 1, BHC Proposition 1 Grant Program Fact Sheet.*)

Zero (0) proposals were received during the 1<sup>st</sup> round (August -September.)

During the 2<sup>nd</sup> round (November – December,) two (2) proposals were received. Both were reviewed for completeness based upon the BHC Screening Guidelines. Of the two proposals, one (1) passed the screening process. BHC Staff and two professionals from relevant fields evaluated and scored the proposal (on a scale from 0 – 100) per the standard Proposition 1 Evaluation Scoring Criteria.

The scores of all reviewers were averaged to produce a final score. In this case, the final score was below the minimum point threshold, and therefore did not progress to the next step. Staff informed the applicant of its final score, provided brief details about the proposal's shortcomings, and the ability to apply again in a future round.

During the 3<sup>rd</sup> Round (February – March.) one (1) proposal was received. Staff is currently screening the proposal for minimum requirements.

In order to increase awareness of and provide guidance for the Proposition 1 Grant Program, the BHC has decided to conduct four (4) informational Grant Workshops per fiscal year beginning this month and continuing through the grant cycles ending next fiscal year.

BHC Staff will conduct its first Workshop on April 19, 2016, at the Baldwin Hills Scenic Overlook State Park (BHSO). The intention is to promote the BHC Proposition 1 Grant Program and increase the number of quality grant proposals. The BHC is targeting a range of governmental agencies and non-profit organizations. (*See Attachment 2, Grant Workshop flyer.*)

## **BHC Proposition 1 Grant Program**

### **Fact Sheet**

<p style="text-align: center;"><b>Ballona Creek and Baldwin Hills Watershed Program</b></p> <p style="text-align: center;"><b>Offers competitive grants for:</b></p> <ul style="list-style-type: none"> <li>• Multi-benefit Open Space Projects</li> <li>• Water Conservation Infrastructure Projects</li> <li>• Watershed Protection Projects</li> <li>• Habitat Restoration Projects</li> </ul>	<p style="text-align: center;"><b>Solicitation Periods per Fiscal Year (July 1 – June 30)</b></p> <ul style="list-style-type: none"> <li>• Aug. – Sep. (Round 1)</li> <li>• Nov. – Dec. (Round 2)</li> <li>• Feb. – Mar. (Round 3)</li> <li>• May – Jun. (Round 4)</li> </ul>
<p style="text-align: center;"><b>Informational Workshops (tentative dates):</b></p> <ul style="list-style-type: none"> <li>• April 19, 2016</li> <li>• July 19, 2016</li> <li>• October 18, 2016</li> <li>• January 18, 2017</li> </ul>	<p style="text-align: center;"><b>Board Meetings 2016 (remaining):</b></p> <ul style="list-style-type: none"> <li>• April 15</li> <li>• June 10</li> <li>• July 22</li> <li>• Sept. 16</li> <li>• Oct. 21</li> <li>• Dec. 2</li> </ul>

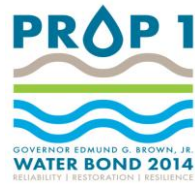
<b>SOLICITATION PERIODS</b> <b>FY 15/16</b>	<b>WORKSHOPS</b> <b>FY 15/16</b>	<b>BHC BOARD MEETINGS</b> <b>FY 15/16</b>
<b>AUG 7 – SEPT 30</b> <b>Round 1</b>		None.
OCTOBER	Not offered.	October 23, 2015
<b>NOV 1 – DEC 31</b> <b>Round 2</b>		December 4, 2015
JANUARY	Not offered.	
<b>FEB 1 - MAR 31</b> <b>Round 3</b>		February 4, 2016
APRIL	April 19, 2016	April 15, 2016
<b>MAY 1 - JUNE 30</b> <b>Round 4</b>		June 10, 2016
JULY	July 19, 2016	July 22, 2016

**Solicitation Packages (Request for Proposal):**

- [www.bhc.ca.gov](http://www.bhc.ca.gov)

**Prop 1 Project Manager:**

- Daniel Sciolini  
(323) 290-5276  
[Daniel.sciolini@bhc.ca.gov](mailto:Daniel.sciolini@bhc.ca.gov)



## **BALDWIN HILLS CONSERVANCY PROPOSITION 1 GRANT WORKSHOP**



### **BALLONA CREEK AND BALDWIN HILLS WATERSHED PROJECTS**

Multi-Benefit Open Space ♦ Water Conservation Infrastructure  
Watershed Protection ♦ Habitat Restoration

#### **PROPOSITION 1 GRANT INFORMATION WORKSHOP**

Prospective applicants from public agencies and non-profits are invited to attend a brief presentation about the Grant Program and information for preparing proposals for Ballona Creek and Baldwin Hills Watershed projects.

April 19, 2016 from 10:30 AM - 11:30 AM

Baldwin Hills Scenic Overlook  
6300 Hetzler Rd., Culver City, CA 90232

You may find the Baldwin Hills Conservancy Prop 1 Solicitation Package at:

<http://www.bhc.ca.gov>

RSVP for the next workshop by contacting Prop 1 Project Manager, Daniel Sciolini at:

[Daniel.Sciolini@bhc.ca.gov](mailto:Daniel.Sciolini@bhc.ca.gov) / (323) 290 – 5276

**Baldwin Hills Conservancy  
Attn: Grants Administration  
5120 W. Goldleaf Circle, Suite 290  
Los Angeles, CA 90056**

# BALDWIN HILLS CONSERVANCY

5120 West Goldleaf Circle, Suite 290  
Los Angeles, CA 90056  
(323) 290-5270 Phone  
[www.bhc.ca.gov](http://www.bhc.ca.gov)

---

## Memorandum

**To:** Governing Board

**From:** David McNeill, Executive Officer

**Date:** April 15, 2016

**Re:** Item 9: Executive Officer Report

### **Projects Status Report**

Please see Attachment #1 for the updated Baldwin Hills Conservancy (BHC) Local Assistance/Capital Outlay Projects Status Report.

### **Fiscal Update**

Please see Attachment #2; BHC Summary Expenditure Sheet by Fund, and Attachment #3; BHC Prop 40 & Prop 84 Bond Cash Funds. The reports correspond with the end of month seven (7) for the 2015-2016 Fiscal Year.

### **Legislative Update**

On March 23, 2016, Congressman Ted Lieu submitted H.R. 4871 (see Attachment #4) on behalf of Members Maxine Waters, Karen Bass, Adam Schiff, and Janice Hahn to initiate a three-year resource study of the Los Angeles Coastal Area in California, which includes the entire BHC territory from the Baldwin Hills and Ballona Creek to the Wetlands. If approved, the study would examine land, water, and interests of the "Coastal" area to evaluate opportunities to protect resources within the expanded territory reaching from the Santa Monica Bay to the Parklands, and part of the San Pedro Bay.

The bill was heard in the House Committee on Natural Resources on March 23, 2016, and referred to the Subcommittee on Federal Lands on March 26, 2016.

**Baldwin Hills Conservancy**  
**Local Assistance / Capital Outlay Projects Status Report**  
**03/15/16**

<b>Capital Outlay Grantee/Administrator</b>	<b>Project Title</b>	<b>ContractID</b>	<b>Fund Source</b>	<b>Funds Allocated</b>	<b>Agreement Expiration</b>	<b>PROJECT STATUS</b>
Mountains Recreation and Conservation Authority (MRCA)	Milton Street Park Construction	BHC12000	Prop 84	\$2,000,000	12/31/16	Park portion is complete; Permitting for the Green Street construction is delayed in City's review process; MRCA staff are working with the Councilman's office to resolve the issue.
City of Culver City	Hetzler Road Pedestrian Path at BHSO	BHC13003	Prop 84	\$791,000	12/31/16	Additional funding sources and contractor bid are now in place; Construction will begin April 2016.
University of Southern California (USC)	Baldwin Hills Biota Update	BHC13002	Prop 84	\$140,794	9/31/16	Staff met w/ the Grantee earlier this month; Data collection and analysis is proceeding as scheduled; Expected completion August 2016.
Loyola Marymount University (LMU)	Parklands User Survey Study	BHC14000	Prop 84	\$236,042	9/31/17	Spring collection period is currently underway. Next report will be available October 2016.
City of Culver City	Park to Playa Trail - Ballona Creek Connection	BHC15002	Prop 84	\$336,043	6/31/17	Pre-construction phase is underway as of March 2016. Project completion expected December 2016.
Los Angeles County Dept. of Parks & Recreation	Stoneview Nature Center	BHC12002	Prop 40	\$5,000,000	12/31/16	Construction is ongoing; Nature center interpretative content and design being finalized now; due to the necessity to conduct additional soil investigations, design for slope stabilization and incorporate existing site materials (i.e. brick) into the site grading, a request to the Board for term extension is forthcoming.
Mountains Recreation and Conservation Authority (MRCA)	Park to Playa Trail - Stocker Corridor Section	BHC12005	Prop 40	\$1,030,000	6/30/16	Very successful opening event was held 3/4/16; close-out documents are in-progress.

**Baldwin Hills**  
**2015/16 Summary Sheet by Fund**

<u>As of 1/31/16</u>	<u>PCA #</u>	<u>Remaining Appropriation</u>	<u>EXP + ENC</u>	<u>BALANCE</u>	<u>Encumber by</u>	<u>Liquidate by</u>
<u>ELPF - #0140, Support</u>						
2015 Budget Act Item 3835-001-0140	10001	\$ 377,000.00	\$ 236,983.90	\$ 140,016.10	06/30/16	06/30/18
<u>Prop 40 - #6029, Support</u>						
2015 Budget Act Item 3835-001-6029	10005	\$ 118,000.00	\$ 62,257.92	\$ 55,742.08	06/30/16	06/30/18
<u>Prop 84 - #6051, Support</u>						
2015 Budget Act Item 3835-001-6051	10009	\$ 129,000.00	\$ 26,223.99	\$ 102,776.01	06/30/16	06/30/18
<u>Prop 1 - #6083, Support</u>						
2015 Budget Act Item 3835-001-6083	10006	\$ 100,000.00	\$ -	\$ 100,000.00	06/30/16	06/30/18
Total Support Balance:				\$ 398,534.19		
<u>Prop 1 - #6083, Local Assistance/ Capital Outlay</u>						
2015 Budget Act Item 3835-101-6083	20004	\$ 2,000,000.00	\$ -	\$ 2,000,000.00	06/30/18	06/30/20
Total Prop 1 Balance:				\$ 2,000,000.00		
<u>Prop 40 - #6029, Capital Outlay</u>						
2015 Budget Act Item 3835-301-6029	20005	\$ 11,604,000.00	\$ -	\$ 11,604,000.00	06/30/18	06/30/20
Total Prop 40 Balance:				\$ 11,604,000.00		
<u>Prop 84 - #6051, Capital Outlay</u>						
2015 Budget Act Item 3835-301-6051	30004	\$ 2,118,000.00	\$ -	\$ 2,118,000.00	06/30/18	06/30/20
2014 Budget Act Item 3835-301-6051	30003	\$ 3,120,000.00	\$ 1,758,149.00	\$ 1,361,851.00	06/30/17	06/30/19
Total Prop 84 Balance:				\$ 3,479,851.00		

# BOND CASH FUNDS

2015 COMMERCIAL PAPER TE		CASH ALLOCATED	EXPENDITURES	BALANCE
	PROP 84:	\$1,177,819.00	1,156,609.57	\$21,209.43
	PROP 40	\$1,283,337.53	0.00	\$1,283,337.53
2010 SPRING BAB SALE		CASH ALLOCATED	EXPENDITURES	BALANCE
	PROP 40:	\$579,277.00	579,277.00	\$0.00
	PROP 84:	\$829,272.44	829,272.44	\$0.00
2010 DECEMBER BAB SALE				
	PROP 40:	\$380,954.00	380,954.00	\$0.00
	PROP 84:	\$43,760.00	43,760.00	\$0.00
2010 DECEMBER TE SALE				
	PROP 40:	\$60,547.82	0.00	\$60,547.82
2010 SPRING TE SALE				
	PROP 40:	\$3,082,367.86	2,880,500.23	\$201,867.63
	PROP 84:	\$1,095,534.16		\$0.00
2009 OCTOBER TE SALE				
	PROP 40:	\$1,182,376.87	1,182,376.87	\$0.00
	PROP 84:	\$188,122.75	188,122.75	\$0.00
2009 MARCH SALE				
	PROP 40:	\$901,961.01	901,961.01	\$0.00
	PROP 40-SMIF	\$10,088.33	10,088.33	\$0.00



114TH CONGRESS  
2D SESSION

# H. R. 4871

To direct the Secretary of the Interior to conduct a special resource study of portions of the Los Angeles coastal area in the State of California to evaluate alternatives for protecting the resources of the coastal area, and for other purposes.

---

## IN THE HOUSE OF REPRESENTATIVES

MARCH 23, 2016

Mr. TED LIEU of California (for himself, Ms. MAXINE WATERS of California, Ms. BASS, Mr. SCHIFF, and Ms. HAHN) introduced the following bill; which was referred to the Committee on Natural Resources

---

## A BILL

To direct the Secretary of the Interior to conduct a special resource study of portions of the Los Angeles coastal area in the State of California to evaluate alternatives for protecting the resources of the coastal area, and for other purposes.

1 *Be it enacted by the Senate and House of Representa-*  
2 *tives of the United States of America in Congress assembled,*

3 **SECTION 1. SHORT TITLE.**

4 This Act may be cited as the “Santa Monica Moun-  
5 tains National Recreation Area Boundary Adjustment  
6 Study Act”.

1 **SEC. 2. RESOURCE STUDY OF THE LOS ANGELES COASTAL**  
2 **AREA, CALIFORNIA.**

3 (a) **STUDY REQUIRED.**—The Secretary of the Inte-  
4 rior shall conduct a special resource study of the lands,  
5 waters, and interests of the study area to evaluate a range  
6 of alternatives for protecting resources of the study area,  
7 including—

8 (1) expanding the Santa Monica Mountains  
9 Recreation Area and redesignating the area as the  
10 “Santa Monica Mountains and Coastal Recreation  
11 Area”; or

12 (2) creating a new coastal recreation area des-  
13 ignated as “Los Angeles Coastal Recreation Area”.

14 (b) **STUDY TOPICS.**—In conducting the study, the  
15 Secretary shall evaluate alternatives that accomplish, to  
16 the extent practicable, the following objectives:

17 (1) Preserving and restoring beaches, coastal  
18 uplands, and waterways.

19 (2) Connecting, coordinating, and preserving  
20 State, county, and local government parks and other  
21 publicly owned lands to enhance the potential for  
22 public recreation use.

23 (3) Developing and protecting historic sites, sig-  
24 nificant landscapes, districts, sites, structures, and  
25 recreation areas in connection therewith, including

1 parks, picnic areas, scenic overlooks, hiking trails,  
2 bicycle trails and equestrian trails.

3 (4) Creating open spaces for parks and rec-  
4 reational use along the coastline adjoining the  
5 Ballona Wetlands, in the City of Santa Monica, ad-  
6 jacent to and along State and county beaches of Los  
7 Angeles along the north Santa Monica Bay down  
8 through Dockweiler State Beach up and around the  
9 Ballona Creek and Wetlands, Baldwin Hills, and  
10 along the coastline in the San Pedro section of the  
11 City of Los Angeles, excluding the Port of Los An-  
12 geles north of Crescent Avenue.

13 (5) Protecting wildlife populations in the des-  
14 ignated area by preserving and restoring the Ballona  
15 Creek and Wetlands.

16 (6) Establishing connections along the trail sys-  
17 tems in the designated areas with the aim of cre-  
18 ating or maintaining single contiguous trails along  
19 the Santa Monica Bay coastline and through  
20 Ballona Creek into the Baldwin Hills and encom-  
21 passing major feeder trails connecting adjoining  
22 communities and regional transit to the trail system.

23 (7) Preserving recreational opportunities and  
24 facilitating access to open space for a variety of rec-  
25 reational users.

1           (8) Protecting rare, threatened, or endangered  
2       plant and animal species, and rare or unusual plant  
3       communities and habitats.

4       (c) PRIVATE PROPERTY.—The study shall include an  
5       analysis of—

6           (1) the impact that establishment of all or a  
7       portion of the Ballona Creek and Wetlands, Baldwin  
8       Hills, and the San Pedro coastline as a unit of the  
9       Santa Monica Mountains National Recreation Area  
10      is likely to have on—

11           (A) land within or bordering the area that  
12      is privately owned at the time the study is con-  
13      ducted; and

14           (B) leaseholders of publicly owned, devel-  
15      oped lands; and

16           (2) the concerns of private landowners within  
17      the existing boundaries of the Santa Monica Moun-  
18      tains National Recreation Area.

19       (d) CONSULTATION.—The Secretary shall conduct  
20      the study in consultation with the appropriate Federal,  
21      State, county and local government departments and enti-  
22      ties, elected officials, community groups and nonprofits,  
23      including those that serve the following areas:

24           (1) North Santa Monica Bay Coastline: City of  
25      Santa Monica, County of Los Angeles, City of Los

1 Angeles communities of Pacific Palisades, Brent-  
2 wood, and Venice.

3 (2) Ballona Creek, Wetlands, and central Santa  
4 Monica Bay: City of Culver City, County of Los An-  
5 geles Marina Del Rey community, City of Los Ange-  
6 les communities of Palms, Playa Vista, Del Rey,  
7 Palms, and Westchester.

8 (3) Baldwin Hills and Ballona Creek head-  
9 waters: County of Los Angeles communities of Bald-  
10 win Hills, Windsor Hills and Ladera Heights, and  
11 City of Los Angeles communities of View Park, and  
12 Faircrest Heights.

13 (4) Santa Monica Bay Coastline South: City of  
14 El Segundo, City of Manhattan Beach, City of  
15 Hermosa Beach, City of Redondo Beach, and City  
16 of Torrance.

17 (5) Port of Los Angeles: City of Los Angeles,  
18 community of City of Los Angeles, community of  
19 San Pedro.

20 (e) STUDY CRITERIA.—In addition to the special con-  
21 siderations specified in this section, the Secretary shall  
22 conduct the study in accordance with section 100507 of  
23 title 54, United States Code.

24 (f) TRANSMISSION OF STUDY.—Not later than 3  
25 years after funds are first made available for the study,

1 the Secretary shall transmit a report containing the re-  
2 sults of the study to the Committee on Natural Resources  
3 of the House of Representatives and the Committee on  
4 Energy and Natural Resources of the Senate.

5 (g) DEFINITIONS.—For the purposes of this Act:

6 (1) SECRETARY.—The term “Secretary” means  
7 the Secretary of the Interior.

8 (2) STUDY.—The term “study” means the  
9 study required by subsection (a)

10 (3) STUDY AREA.—The term “study area”  
11 means the coastline and adjacent areas to the Santa  
12 Monica Bay from the City of Santa Monica from  
13 Will Rodgers Beach to Rat Beach, including the  
14 areas in and around Ballona Creek and the Baldwin  
15 Hills and the San Pedro section of the City of Los  
16 Angeles, excluding the Port of Los Angeles north of  
17 Crescent Avenue.

○