

Baldwin Hills Conservancy (BHC)
NOTICE OF PUBLIC MEETING
The meeting of the Baldwin Hills Conservancy will be held
Friday, January 24, 2014 from 10:00 a.m. - 12:00 p.m.
Kenneth Hahn State Recreation Area
Community Center
4100 South La Cienega Blvd.
Phone (323) 298-3660

Teleconference Location:
Natural Resources Agency
1416 Ninth Street, 13th Floor
Conference Room 1305
Sacramento, CA 95814

10:00 am: CALL TO ORDER Starlett Quarles, Chair

MEETING AGENDA

PUBLIC COMMENTS ON AGENDA OR NON-AGENDA ITEMS WILL BE CALLED PRIOR TO ACTION ITEMS

Public Comment and Time Limits: If you wish to speak on an agenda item cards are available near the door to the meeting room. Individuals wishing to comment will be allowed up to three minutes to speak. Speaker times may be reduced depending on the number of speakers.

1. Call to Order – Starlett Quarles, Chair
2. Roll Call – Gloria Dangerfield, Executive Secretary
3. Approval of Minutes (December) – Starlett Quarles, Chair
4. Discussion and possible action on a proposal for incorporating ecological assessment and monetization strategies into the Baldwin Hills Conservancy land conservation program – Mark Laska, Great Ecology
5. Consideration of a resolution authorizing a grant of BHC Prop 84 funds to Culver City Public Works for the Hetzler Road Pedestrian Trail Project – David McNeill, Executive Officer
6. Executive Officer Report – BHC Staff Representatives
 - Project Status Update
 - Fiscal Update
 - Legislative Update
7. Ad Hoc Committee Reports – Committee Chairs
8. Board Member announcements or agenda items for future meetings

* Next meeting is tentatively scheduled for March 28, 2014.

ADJOURNMENT

In accordance with the Americans with Disabilities Act of 1990, if you require a disability related modification or accommodations to attend or participate in this meeting, including auxiliary aids or services, please call Gloria Dangerfield at the Conservancy at (323) 290-5270 at least five days prior to the meeting. For more information about the Conservancy, you may visit our website at **www.bhc.ca.gov**

STATE OF CALIFORNIA – THE NATURAL RESOURCES AGENCY
BALDWIN HILLS CONSERVANCY
5120 West Goldleaf Circle, Suite 290
Los Angeles, CA 90056
Ph: (323) 290-5270
Fx: (323) 290-5276

**MINUTES OF THE PUBLIC MEETING
of the
BALDWIN HILLS CONSERVANCY
DECEMBER 13, 2013**

I. CALL TO ORDER

The public meeting of the Baldwin Hills Conservancy was assembled on December 13 2013, at 10:15 a.m. and was held inside the Community Room at Kenneth Hahn State Recreation Area, 4100 South La Cienega Blvd., Los Angeles, CA 90056

II. Roll Call

Roll was taken and the following members were present: Julie Alvis, Allan Boodnick, Lloyd Dixon, Jacquelyn Dupont-Walker, Karen Finn, Hayden Sohm, Robert Jones (arrived after roll) Chair Allan Kingston, Vice Chair Starlett Quarles, Craig Sap, Sara Amir, Jason Marshall, and Marina Voskanian.

Members absent were Yolanda Gorman*, Patricia O'Toole*, Supervisor Mark Ridley-Thomas, Joan Cardellino, Joseph Edmiston*, and Patrick Reynolds*.

Staff present was David McNeill, Gail Krippner, and Gloria Dangerfield.

(* = advance notification of absence)

III. Approval of Minutes (November) G. Allan Kingston, Chair

The Chair called for the motion to approve. Member Boodnick made the motion and motion seconded. The Chair called for the vote. All ayes, motion carries.

IV. Presentation and Update on 2013-14 BHC Bond Funded Local Assistance Projects in the Baldwin Hills Parklands – David McNeill, Executive Officer

Mr. McNeill gave a PowerPoint presentation of the local funded projects. The presentation covered projects from January to current that included nine projects; three that are relatively new, three in the middle of existence, and three that were completed. He stated the Baldwin Hills Master Plan is the key document which drives all of the Conservancy's mission and projects:

- Inter-modal transportation to coordinate public transportation to the parklands.
- Acquisition of open spaces mission to extend parklands; historically have expanded by 33%.
- Linkage and access study. The Jefferson Streetscape and Access Improvement project has been an overwhelming success. Project was awarded the 2013 Best Award by APWA.
- Park to Playa Trail Ramp at Ballona Creek. The project is associated with the bridge widening at Higuera and will get pedestrians off Higuera and onto the ramp down to Ballona Creek, which will be able to have closer access to the Scenic Overlook than Duquesne.
- Eastern Ridgeline. The segment was just completed. The fifteen acre site has multiple improvements; exercise equipment, a one mile running trail, landscaping, benches, waste receptacles, and directional signage. Baldwin Hills Conservancy contributed \$2.9 million dollars and the County of Los Angeles contributed \$100,000.
- Norman O. Houston Park. The City of Los Angeles received \$1.8 million dollars from the Baldwin Hills Conservancy and received \$700,000 in Quimby funds to match. Project features include restrooms, landscaping, a new parking lot area, solar lighting, trail connections, as well as ADA access improvements.

Presentation and Update on 2013-14 Bond Funded Local Assistance Projects (cont'd)

- Stocker Corridor Segment grant with MRCA. Baldwin Hills Conservancy awarded planning and development funds to MRCA in the amount of \$900,000. Upgrades will be applied to the interim trail to make it consistent with Park to Playa including access improvements at the corner trail head as well as a link to Ingold Park. The County of Los Angeles will be doing upgrades at the five-points intersections to meet ADA compliance
- Milton Street. This investment includes several improvements and will take pedestrians off the bike path and onto a side area where they can stop and learn about native habitat. A green street feature is being permitted through the City. The project will also simplify connectivity between the school across the street.
- Baldwin Hills Restoration Project. Work was wrapped up and closed out of the grant is complete. Project work was pretty amazing in terms of outreach, education programs, training for park staff and youth dealing with native plants and weed management.
- Stoneview Nature Center. Baldwin Hills Conservancy contributed \$5 million dollars and \$5.2 million dollars was contributed by the County of Los Angeles through BHRCA. This will create multipurpose rooms, offices, interpretive gardens, parking, trail, restrooms, observation decks, native landscaping and other amenities.
- Biota Update. This is the most recent project. The Conservancy is working with USC and will split costs with BHRCA for the flora and fauna survey study, technical reports and mapping. The biggest part will be the geo-spatial portal where info can be uploaded on the web and available to the public.

V. Election of Board Officers Pursuant to Public Resources Code Section 32558

Mr. McNeill stated Vice Chair Starlett Quarles would rotate to the seat as Chair. The Chair called for a motion to nominate Member Quarles. Member Boodnick made the motion and the motion was seconded. The Chair called for roll to approve the nomination. Member Alvis – aye, Member Boodnick – aye, Member Dixon – aye, Member Dupont-Walker – aye, Member Finn – aye, Member Sohm – aye, Member Kingston – aye, Member Jones – aye, and Member Sap – aye. Motion carries.

The Chair stated Vice Chair nominations would be held next. Nominees are Sara Amir and Jacquelyn Dupont-Walker. The Chair called for the motion. Member Boodnick made the motion to approve the nominees. Motion seconded. Before calling for the vote, the Chair asked for any other nominations. Hearing none, the Chair asked for roll to be taken for the vote. Member Dupont-Walker, asked to be declined from consideration for Vice Chair. Roll was taken to nominate Sara Amir as Vice Chair; Member Alvis – aye, Member Boodnick – aye, Member Dixon – aye, Member Dupont-Walker – aye, Member Finn – aye, Member Sohm – aye, Member Jones – aye, Member Kingston – aye, Member Quarles – aye, and Member Sap – aye. Motion carries.

VI. Ad Hoc Committee Reports – Committee Chairs

Board Development – Dr. Allan Boodnick, Chair

Marketing & Special Events – Jackie Dupont-Walker, Chair

Board Development

Member Boodnick reported that this item stems from last year's lack of quorum, including filling vacancies. From their committee effort he learned there was some confusion between one's responsibility and obligations as a board member, what the board members' role is, and how to go about performing their roles. He went over suggestion from his report:

- Pre-screen and recruit potential candidates
- Identify legislator(s) who will sponsor change in the statute
- Identify other issues to strengthen board productivity

Marketing and Special Events

Member Dupont-Walker reported the event was being led by the Baldwin Hills Conservancy and the Executive Director, David McNeill. She had the responsibility of coordinating with all of the stakeholders of the venture. The program gives the opportunity to showcase the renaissance of the area that suffered a devastating event in 1963. They are pleased that the vision has been captured by the media. Gail Anderson (Channel 5) has been conducting interviews all morning at the top of the hill. She has become

convinced of the important and very exciting work that the Baldwin Hills Conservancy board has done and feels that they have not told their story about the Conservancy, as people are unclear what the Conservancy is. She stated that David McNeill is faithful in this movement and comes with a strong history that many people working with the other groups do not have. She acknowledged that the County of Los Angeles has taken a special leadership role with Supervisor Mark Ridley-Thomas providing the funds to underwrite the event. The program will recognize the survivors, the renaissance team, and first responders. They will have a moment of silence to remember the five who lost their lives. She encourages everyone to come out and bring others to the event. At 2:30 p.m., Baldwin Hills Conservancy new Chair, Starlett Quarles, will speak and the program will end with a moment of silence at 3:38 p.m.; the time the dam broke.

VII Discussion and Possible Action on the Proposed 2014 Meeting Schedule

Mr. McNeill stated that there was one modification to the meeting schedule; January 17 meeting date will be moved to January 24.

VIII. Public Comment

Jim Lamm, Ballona Creek Renaissance president, commented that while looking at the impressive presentation Mr. McNeill made earlier, his organization has been part of the effort for a long time; part of the advisory committee for the original one big park plan, part of the advisory committee for the Baldwin Hills Scenic Overlook, part of the process for the Milton Street Park, and most recently, enjoyed participating with the Baldwin Hills restoration program. When he goes along Ballona Creek, below the Scenic Overlook or above the steps of the Scenic Overlook, he sees a stretch of the creek that is crying out for some improvement and restoration. He's looking forward next year to resuming conversations on working together to restore this area. His organization is looking forward to the dam celebration event and they will have a table there. In their April newsletter, there's an extensive article on the Baldwin Hills and the Park-to-Playa planning and also the dam break. A link to the helicopter coverage at the time of the disaster can be accessed through their website: www.ballonacreek.org.

IX. Executive Officer Report – BHC Staff Representatives

Project Status Update

Fiscal Update

Legislative Update

Mr. McNeil stated the project updates were pretty much covered in Item IV, outside of the Department of Toxic Substances Control; which we still have an agreement with them for soil management.

Fiscal Update – Attachment II (Environmental License Plate Fund, Prop 40 and Prop 84 Support). In his last update he informed the board that the regular support budget is moving along fine. Prop 84 position hiring is in a stalemate; offer made for the open position was not accepted. He cannot hold the offer any longer. Prop 40 Funds Capital Outlay, as well as Prop 84 Funds Capital Outlay, has a total balance of eighteen million nine-hundred dollars. The balance fluctuates up and down as disencumbered projects finish, as well as new projects being underwritten.

X. Board Announcements or Agenda Items for Future Meetings

Member Jones offered good cheer throughout the coming year, well wishes for everyone's families and friends continue to prosper under the guidance of the great being; Merry Christmas and a Happy New Year.

Member Boodnick wished everyone Happy Holidays and a wonderful New Year.

Member Dixon wished everyone Happy Holidays and a Happy New Year. He's looking forward to tomorrow's even, which should be a great.

Member Quarles wished everyone Happy Holidays and looks forward to tomorrow' event.

Board Announcements and Agenda Items for Future Meetings (Cont'd)

Member Sohm said Supervisor Ridley-Thomas, through Karly Katona, has indicated they want to do a makeover of the interior of Kenneth Hahn State Recreation Area, focusing on the presentation of Hahn's collection as well as the accouterments associated with the building; i.e. furniture, etc. If any board members have suggestions, work through David McNeill, who can relay them to Member Sohm.

Member Amir wished everyone Happy Holidays and is looking forward to working with everyone next year, especially with Member Quarles.

Member Voskanian wanted to recognize all the good work of David McNeill and his staff and the great job in all their accomplishment and Happy Holidays to all.

Member Alvis wished everyone Happy Holidays.

The Chair thanked everyone for being here and wished everyone a Merry Christmas and a Happy New Year.

XI. Adjournment

There being no more business brought before the board, the meeting was adjourned at 11:30 a.m.

Approved:

Starlett Quarles
Chairman

Date:

BALDWIN HILLS CONSERVANCY

5120 West Goldleaf Circle, Suite 290

Los Angeles, CA 90056

Ph: (323) 290-5270

Fx: (323) 290-5278

www.bhc.ca.gov

Memorandum

To: Governing Board

Fr: David McNeill, Executive Officer

Date: January 24, 2014

Re: Item 4: Discussion and possible action on a proposal for incorporating ecological assessment and monetization strategies into the Baldwin Hills Conservancy land conservation program

Background: The Baldwin Hills Conservancy Land Conservation Program was developed through a grant to the State Lands Commission and adopted by the BHC in 2006. At that time, a thorough economic evaluation of several options for financing and acquiring fee interests in the Baldwin Hills was developed as an integral part of the agency's land conservation strategy. This December, staff introduced BHC members Marina Voskanian and Lloyd Dixon to the consulting firm Great Ecology to hear about the company's experience partnering with non-profits and government agencies to create ecologically based solutions to land conservation. Both members expressed an interest in furthering board member education, as well as public awareness, of the alternatives to traditional fee title acquisition. An instructive presentation from Great Ecology will touch on the following concepts:

- An introduction to Great Ecology and the ecological approach
- The conservation challenge for the Conservancy and area landowners
- Monetizing land assets with ecologically driven strategies
- Understanding site options through ecological assessments

The power point presentation will be provided at the meeting. Board discussion following the presentation could consider collaboration opportunities with other agencies or non-profits in the region.

Incorporating an Ecological Approach in Real Estate Decision-Making

Mark S. Laska, Ph.D.
Great Ecology

January 24, 2014



GREATecology
ENVIRONMENT + DESIGN



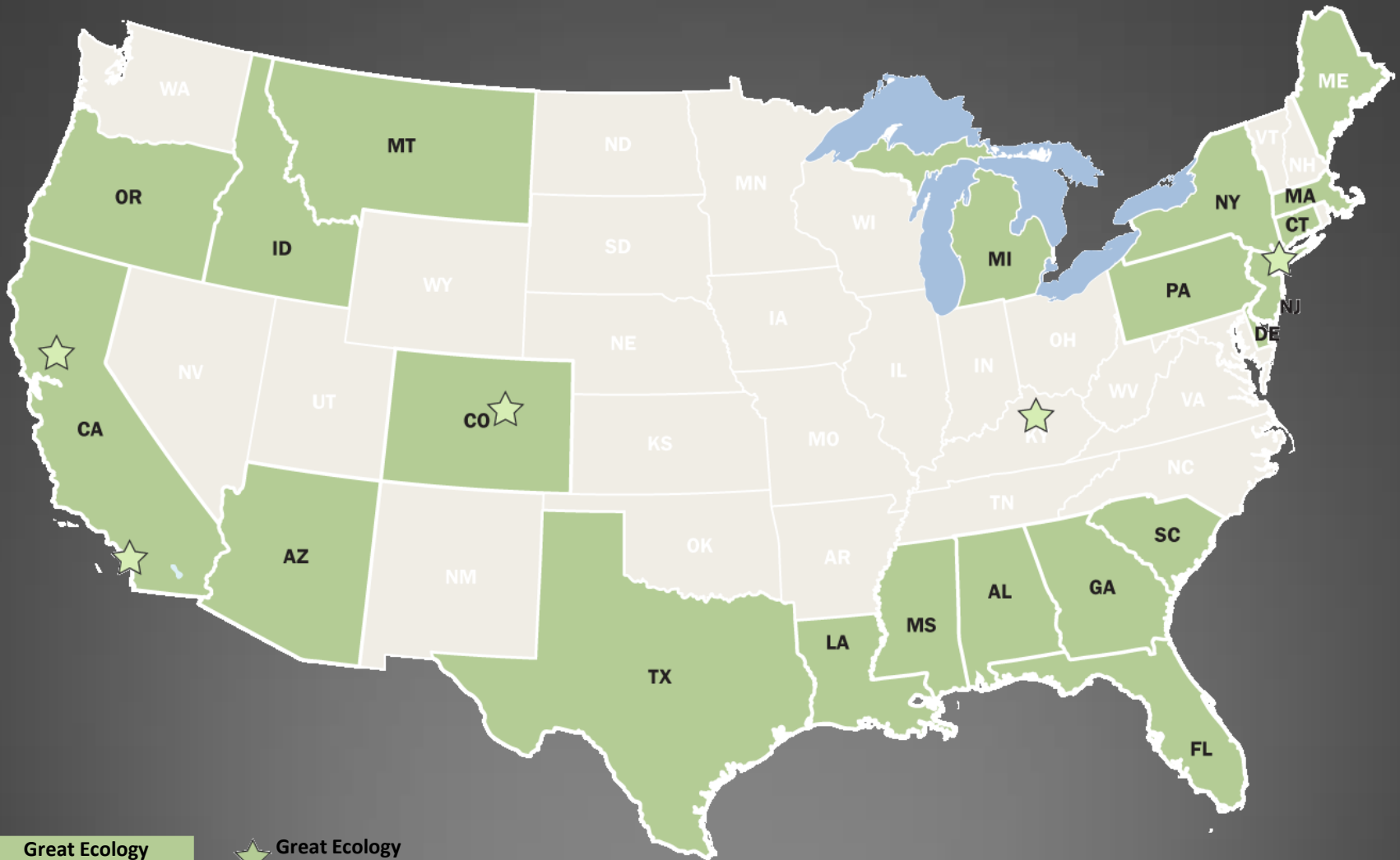
THE BALDWIN HILLS CONSERVANCY CHALLENGE:

Encouraging landowners to manage property for
their interest and the public good



CREATEcology
ENVIRONMENT + DESIGN

GREAT ECOLOGY: A NATIONAL FOOTPRINT



Great Ecology
Project Experience

★ Great Ecology
Office Locations



GREATEcology
ENVIRONMENT + DESIGN



PUBLIC SECTOR PROJECTS

Brooklyn Bridge Park Restoration,
New York



GREATEcology
ENVIRONMENT + DESIGN



PUBLIC SECTOR PROJECTS

Croton Water Filtration Plant,
New York



GREATEcology
ENVIRONMENT + DESIGN



PUBLIC SECTOR PROJECTS

Central Park Restoration,
New York



GREATEcology
ENVIRONMENT + DESIGN

An aerial photograph of a vast, green landscape. A winding river flows through the foreground and middle ground. In the distance, a small town or village is visible, surrounded by green fields and hills. The sky is clear and blue.

PRIVATE SECTOR PROJECTS

Mine Reclamation and Mitigation,
Idaho



GREATecology
ENVIRONMENT + DESIGN



PRIVATE SECTOR PROJECTS

Woodbridge Brownfield
Redevelopment, New Jersey



GREATecology
ENVIRONMENT + DESIGN



PRIVATE SECTOR PROJECTS

Mitigation Planning,
Southern California



GREATecology
ENVIRONMENT + DESIGN



PRIVATE SECTOR PROJECTS

Refinery Site Reuse,
Montana



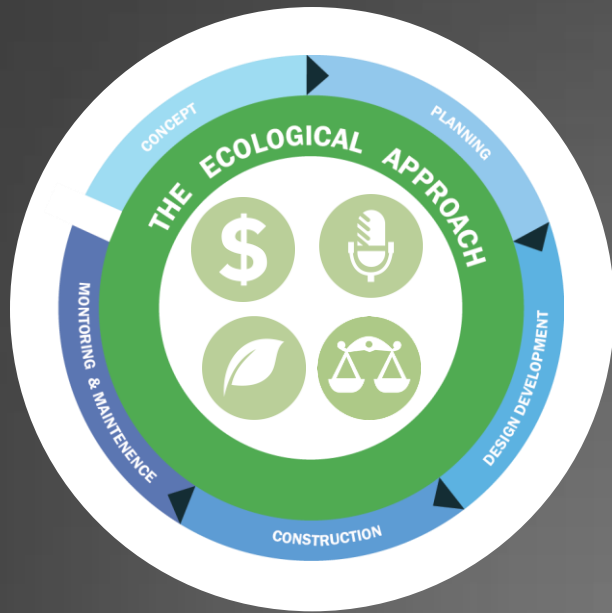
GREATEcology
ENVIRONMENT + DESIGN

ECOLOGICALLY DRIVEN SITE REUSE

- Maximizes the value of the land through its natural resources
- Improves ecological function and biodiversity
- Provides a solid foundation for understanding real estate assets



ECOLOGICAL APPROACH TOOL BOX



- Promoting long-term sustainable design
- Green/bioengineering and infrastructure
- Ecology as a driver
- Improving native ecosystem
- Strategic large-scale planning
- Robust ecological assessments and model
- The site in the context of the landscape

THE VALUE OF THE ECOLOGICAL APPROACH





**How can landowners
monetize their assets?**



Mixed Use/Commercial
Atlantic Yards, Brooklyn, NY



Residential
Santa Fe Springs, CA



Open Space
Gasworks Park, Seattle, WA



Mixed Use/Commercial
Emeryville, CA



Renewable Energy
Bakersfield, CA

TRADITIONAL REDEVELOPMENT OF BROWNFIELD PROPERTIES



Direct Sale of Property



Retain for Own Purposes



Partner with Entity for Business



ECOLOGICALLY DRIVEN STRATEGIES



GREAtEcology
ENVIRONMENT + DESIGN

ECOSYSTEM MARKETPLACE CREDITS

- Wetlands
- Carbon
- Water Quality
- Species
- Conservation & Preservation
- Natural Resource Damages



MITIGATION BANKING

- Third-party method for compensatory mitigation
- Replaces ecological functions quantified as mitigation credits
- Credits are available to bank sponsors or for purchase by other parties
- Bank viability is driven by regulatory factors verified by market studies



EXAMINING SITE OPTIONS

- Quality + extent of natural resources
- Extent of contamination or other liabilities
- Ability to create or enhance natural resources
- Market for sale of land or credits
- PR/Corporate sustainability or other internal benefits



ADDING VALUE WITH AN ECOLOGICAL APPROACH

- Optimize inherent value-- capitalize on natural resources
- Understand the full suite of marketplace strategies
- Properly evaluate and determine the best option for a specific site





mlaska@greatecology.com
www.greatecology.com



GREATEcology
ENVIRONMENT + DESIGN

BALDWIN HILLS CONSERVANCY

5120 West Goldleaf Circle, Suite 290

Los Angeles, CA 90056

Ph: (323) 290-5270

Fx: (323) 290-5278

www.bhc.ca.gov

Memorandum

To: Governing Board

Fr: David McNeill, Executive Officer

Date: January 24, 2014

Re: Item 5: Consideration of a resolution authorizing a grant of BHC Prop 84 funds to Culver City Public Works for the Hetzler Road Pedestrian Trail Project

Recommendation: Approve resolution 14-01 authorizing a grant of up to \$791,000 in BHC Prop 84 funds to the City of Culver City for the Hetzler Road Pedestrian Trail and directing the Executive Officer to enter into an agreement with the Grantee for the Hetzler Road Pedestrian Path at the Baldwin Hills Scenic Overlook

Background: Culver City's Department of Public Works has submitted an application for Prop 84 funds to construct a pedestrian trail along Hetzler Road at the Baldwin Hills Scenic Overlook (see Attachment #1). The Hetzler Trail project represents a collaborative effort between Mountains Recreation and Conservation Authority, California State Parks, and the City, linking a series of pedestrian and bicycle improvements along Jefferson Blvd to the park's main access point. The proposal includes a \$227,587 match of County Prop A Excess Funds leveraged from construction design development and oversight for the Hetzler Road portion of the Park to Playa Trail. The plans were created to improve access by addressing ongoing conflicts between pedestrians and vehicles as they enter and exit the primary road to the popular park. An earlier version of the project had been proposed and was awarded to the Los Angeles Conservation Corps last year, but their application was withdrawn during contract negotiations. This fall, re-engineered design concepts were developed resulting in a dual wall concept that requires less soil removal and import and yields a wider trail.

Culver City's application was assessed using the criteria adopted by the BHC Board in April 2011. The scope of work provides for construction of a 10 foot wide grade-separated concrete pedestrian path that runs parallel to Hetzler Road for approximately 1500 feet. Project deliverables include dual retaining walls, a roadside native planting buffer, high visibility crosswalk, cable fencing, and signage.

The criteria review of the project application corresponded with the following four goals of the Baldwin Hills Park Master Plan and the BHC's Strategic Plan: 1) providing for public access and entryways; 2) emphasizes connections between existing parks, trails, and urban streams; 3) increases active recreation opportunities for underserved communities; 4) creates or implements a comprehensive trail system.

Hetzler Road Pedestrian Trail

City of Culver City

PROP 84 LOCAL ASSISTANCE GRANT PROJECT REQUIREMENTS

(For use in the determination of the eligibility of Conservancy grants and projects authorized under Division 22.7 of the California Public Resources Code)

STANDARD REQUIREMENTS

a. Located within the BHC territory

Site map and narrative identify project is within the Conservancy territory and boundaries as described in PRC 32553 (a).

b. Promotion of the Conservancy's statutory programs and purposes

PRC 32569 (a): Conservancy may award grants to local public agencies for the purposes of this division

PRC 32565.5 (b): Conservancy shall give priority to related projects that create expanded opportunities that provide recreation, aesthetic improvement, and wildlife habitat in the Baldwin Hills area.

c. Consistency with purposes of Prop 84 statute

PRC 75060: Bond funds are available for projects to promote access to and enjoyment of the coastal resources of the State.

d. Consistency with the Baldwin Hills Park Master Plan

Pedestrian Access and Trail Connections, page 46: "Key public access points would allow easy connections to major public trails and access into the park."

e. Greater-than-local interest

With nearly 3 million Californians residing in a five-mile radius of the Baldwin Hills territory (according to the 2000 census data), and over 58 million tourist trip visits to the Los Angeles area annually, the land resources in the Baldwin Hills represent an extraordinarily unique value to the entire state.

f. Demonstrated expertise in the proposed program area

Culver City has extensive experience managing public works projects for pedestrian and vehicular access. Past collaborations with the Conservancy received an award from the American Society of Civil Engineers for Outstanding Civil Engineering Project as well as American Public Works Associations' Project of the Year in 2013.

ADDITIONAL PRIORITIES

- **Leverage**

The applicant is utilizing a \$227,587 match in Prop A funded engineering schematics, construction documentation and oversight from the Baldwin Hills Regional Conservation Authority. This amount is above the 25% match needed to satisfy the application requirements. CEQA documentation has been provided in-kind by California State Parks.

- **Resolution of more than one issue**

This project resolves multiple issues by improving access to Ballona Creek bike path from the Scenic Overlook; encouraging non-vehicular travel; and providing a safe recreation amenity for thousands of daily park users.

- **Readiness**

Culver City is prepared to initiate the project pending approval of the BHC board. They have conducted several planning meetings with the designer and held a public informational meeting on the project on January 9th. Adequate staffing is available within the Public Works Department to manage the project on an 8.5 month timeline.

- **Conflict Resolution**

Agencies such as California State Parks, Culver City, and Baldwin Hills Conservancy are aware of the need to address neighborhood and pedestrian concerns stemming from the public access conflicts arising on a primarily vehicular road. This project will address both pedestrian safety, and the problems area constituents have experience due to the incompatible uses of the road.

- **Realization of prior BHC goal**










The project enhances the existing access at the Baldwin Hills Scenic Overlook and implements a portion of plans developed for the Park to Playa Trail. Building on the popularity of the Ballona Creek and the Scenic Overlook, the proposed improvements are a natural evolution towards the community's vision of linking park resources as recommended in the Baldwin Hills Park Master Plan

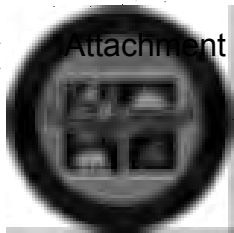
Prop 84 Grant Application

CITY OF CULVER CITY

HETZLER ROAD PEDESTRIAN TRAIL

Table of Contents

	Cover Letter	1
	Application	2
	Resolution	3-4
	Project Narrative & Timeline	5-7
	Project Costs	8
	Project Schedule	9
	Project Location Map	10-12
	Applicant Background and Related Experience	13-15
	Letters of Support	
	▪ State of California Department of Parks and Recreation	
	▪ Mountain Recreation and Conservation Authority	
	▪ Walk N Rollers	



Attachment #1

Culver CITY

PUBLIC WORKS DEPARTMENT

9770 Culver Boulevard, Culver City, California 90232



(310) 253-5600

FAX (310) 253-5626

Charles D. Herbertson
Public Works Director/City
Engineer

January 8, 2014

David McNeill
Baldwin Hills Conservancy
5120 West Goldleaf Circle, Suite 290
Los Angeles, CA 90056

Dear Mr. David McNeill

The City of Culver City is respectfully requesting grant funding for the Hetzler Road Pedestrian Trail at Baldwin Hills Scenic Overlook State Park through the Baldwin Hills Conservancy's (BHC) Proposition 84 Grant Program.

The intent of the project is to better serve the park users at the Baldwin Hills Scenic Overlook State Park as well as create new recreational opportunities that meet the objectives of BHC. A trail alongside the vehicular road is a much needed pathway for Hetzler Road, which will assist in the safe accommodation of both pedestrians and vehicles using the road.

Attached is the full application for consideration by the BHC for the Hetzler Road Pedestrian Trail project.

Thank you for your consideration of this grant request. Culver City looks forward to a successful grant award and the completion of this important project. The residents of Culver City and the Park Users will benefit tremendously from the new trail at Hetzler Road. If you have any questions, please do not hesitate to contact Rudolph R. Galindo, Management Analyst at (310) 253-5618.

Sincerely,

A handwritten signature of Charles D. Herbertson.

Charles D. Herbertson, P.E., L.S.
Director of Public Works/City Engineer

Attachment #1

State of California — The Natural Resources Agency
BALDWIN HILLS CONSERVANCY*APPLICATION FOR LOCAL ASSISTANCE GRANT*

		\$ 791,000
PROJECT NAME	GRANT AMOUNT	
Hetzler Road Pedestrian Trail	\$ 1,018,587 ESTIMATED TOTAL PROJECT COST (State Grant and other funds)	
GRANTEE (Agency and address-including zip code and email)	COUNTY	NEAREST CITY
	Los Angeles	Culver City
	PROJECT ADDRESS	
	Hetzler Road	
	NEAREST CROSS STREET	
	Hetzler Road and Jefferson Boulevard	
	26	47
	SENATE DISTRICT NO.	ASSEMBLY DISTRICT NO.
	26	47

Grantee's Representative Authorized in Resolution:

John Nachbar	City Manager	(310) 253-6000
Name (type)	Title	Phone

Person with day-day responsibility for project (if different from authorized representative):

Charles Herbertson	Public Works Director / City Engineer	(310) 253-5600
Name (type)	Title	Phone

Brief description of project:

The City of Culver City is requesting funds through the Baldwin Hills Conservancy Proposition 84 Grant Program to fund the construction of a pedestrian trail along Hetzler Road. The new trail will provide improved pedestrian access and a new recreational opportunity for park users.

For Dev. projects Land Tenure -- Project is: _____ acres:

_____ Acres owned in fee simple by Grant Applicant

_____ Acres available under a _____ year lease

_____ Acres other interest (explain) _____

For Acquisition projects-Projects will be _____ acres

_____ Acquired in fee simple by Grant Applicant

_____ Acquired in other than fee simple (explain) _____

I certify that the information contained in this project application form, including required attachments, is accurate.

Signed

Grantee's Authorized Representative as shown in Resolution

Date

1/8/14

RESOLUTION NO. 2013-R073

A RESOLUTION OF THE CITY COUNCIL OF THE CITY OF
CULVER CITY, CALIFORNIA, APPROVING AN
APPLICATION FOR GRANT FUNDS FROM THE BALDWIN
HILLS CONSERVANCY FOR PROPOSITION 84 FUNDING
FOR HETZLER ROAD PEDESTRIAN TRAIL
IMPROVEMENTS.

WHEREAS, the Safe Drinking Water, Water Quality and Supply, Flood
Control, River and Coastal Protection Bond Act of 2006 (Proposition 84), was adopted
by California voters in the general election on November 7, 2006, which among other
uses, provides funds to public agencies and nonprofit organizations in the State for the
purpose of preventing contamination and degradation of coastal waters and
watersheds, protecting and restoring the natural habitat values of coastal waters and
lands, promoting access to and enjoyment of the coastal resources of the state; and

WHEREAS, the Baldwin Hills Conservancy ("BHC") has set forth the
necessary procedures governing application for grant funds under Proposition 84; and

WHEREAS, the BHC's procedures require the City of Culver City to
certify, by resolution, the approval of the application before submission of the
application(s) to the BHC; and

WHEREAS, the application contains assurances with which the City of
Culver City must comply; and

WHEREAS, if the application is approved by the BHC, the City of Culver
City will enter into an Agreement with the BHC to provide funds for the Hetzler Road
pedestrian trail improvements (the "Project").

NOW, THEREFORE, the City Council of the City of Culver City DOES
HEREBY RESOLVE:

1. The filing of an application with the Baldwin Hills Conservancy for
Proposition 84 Funds for the Project is hereby approved; and

2. The City of Culver City hereby certifies that it understands the assurances and certification in the application form; and

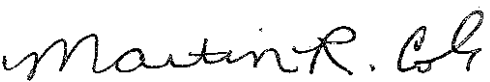
3. The City of Culver City hereby certifies that after completion of construction of the Project, the improvements will be owned and maintained by the State of California Department of Parks and Recreation; and

4. The City Council hereby appoints the City Manager, or his designee, to conduct all negotiations, and to execute and submit all documents including, but not limited to, applications, agreements, amendments, payment requests and so forth, which may be necessary for the completion of the aforementioned project.

APPROVED and ADOPTED this 16th day of December 2013.



JEFFREY COOPER, Mayor
City of Culver City, California

ATTEST:


MARTIN R. COLE, City Clerk

A13-00886

APPROVED AS TO FORM:


CAROL A. SCHWAB, City Attorney

Culver CITY

Hetzler Road Pedestrian Trail Project

Narrative

The City of Culver City is requesting funding through the Baldwin Hills Conservancy (BHC) Proposition 84 Grant Program to support the Hetzler Road Pedestrian Trail project. The proposed trail leading up to the Baldwin Hills Scenic Overlook State Park is a collaborative effort with the State of California Department of Parks and Recreation (State Parks) to address issues of safety and quality of life for park users and the Culver City residents that live nearby. A pedestrian trail paralleling Hetzler road would provide new recreational opportunities for a large population of park users in a safe and secure manner. The project seeks to meet the objectives of each of the partners involved; City of Culver City, State Parks and the BHC. The Pedestrian Trail at Hetzler Road is consistent with the Park to Playa Feasibility Study and the Baldwin Hills Park Master Plan.

Project Objectives

Since its opening in 2009, the Baldwin Hills Scenic Overlook has become a popular destination for visitors from around the region who appreciate the scenic vistas, natural habitat and recreational opportunities available in the park. The road is used for walking, jogging, running and other fitness activities. Due to the relatively narrow width of the road, the lack of pedestrian facilities and residential uses on one side of the road, there is not an adequate space for all users of the road to utilize. Pedestrians use the vehicular travel lanes and create the potential for pedestrian-vehicle conflicts. The need for a pedestrian trail is prevalent and such a trail would provide a safer environment for pedestrians while increasing space available for vehicles. The intent of this proposed project is to mitigate the current conflict by providing pedestrians with a more appealing option. State Parks has expressed their support of the project and has committed to posting signage prohibiting use of Hetzler Road by pedestrians and providing enforcement following completion of the project.

Project Details

The proposed project is to construct a separate pedestrian walking and jogging trail approximately 10 feet wide and 1500 feet long. The trail starts near Jefferson Boulevard and terminates at a point beyond the last residential access point from Hetzler Road and near the point of access to Baldwin Hills and Culver City Park. The trail will allow pedestrians to avoid use of the portion of the roadway that is used for access to residential properties located along Hetzler Road. Construction of the colored concrete trail will include retaining walls to support

Attachment #1

the adjacent hillside, landscaping and irrigation, signage, fencing and appurtenant drainage improvements.

The proposed Hetzler Road Pedestrian Trail Project area is within the State Parks Jurisdiction. Due to staffing constraints and other pressing projects, State Parks has informed the Public Works Department that construction of the project can be completed in a timelier manner with the City of Culver City as the lead agency. The project addresses concerns from Culver City residents along Hetzler Road and therefore it is also in the interest of the City to see this project completed. State Parks will assume full responsibility for operation and maintenance of the trail upon completion of construction and has committed funds that were received by the Mountains Recreation Conservation Authority as stated in the proposed budget.

Tasks and Deliverables

Below is the timeline for the project based on completion of each task on the following list:

Public Outreach

Information Meeting on January 9, 2014

Pre-Construction (19 Weeks)

Grant Approval / Signed Agreement

Plans and Specifications

Authorization and Bidding Period

Award and Execution of Construction Contract

Construction (12 Weeks)

Mobilization

Construction Survey

Excavation / Removals

Retaining Wall

Fence on Wall

Concrete Trail

Drainage V-Ditch

Signage

Inspection & Acceptance (2 Weeks)

Final inspection & State Parks Acceptance

Project Total: 33 Weeks (approximately 8.5 months)

Attachment #1

Project Costs

The amount being requested from the grant is \$791,000 to cover all construction costs. The 25% required matching amount will be satisfied through the cost of the project planning and design. This contribution comes from the Baldwin Hills Regional Conservation Authority's Prop A Excess Funds to the Mountains and Recreational Conservation Authority.

Project Cost Breakdown

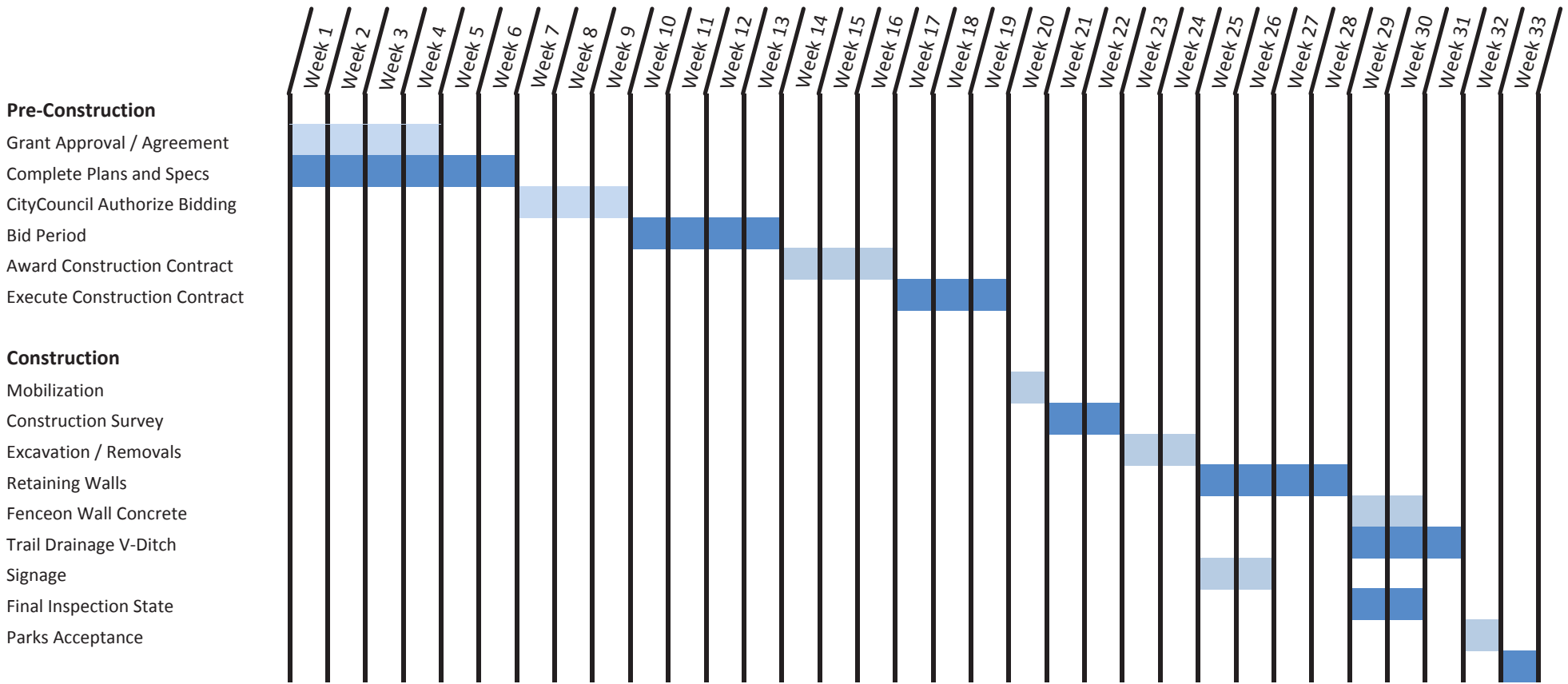
Construction (<i>line item details attached</i>)	\$610,000
Contingencies (10%)	\$ 61,000
Construction Management (15%)	\$ 90,000
City staff support (5%)	\$ 30,000
Grant Amount	\$791,000
Feasibility Study	\$21,000
Construction Documents	\$124,250
Construction Observation	\$17,190
Re-Design	\$65,147
Matching Amount (funding through MRCA)	\$227,587
Total Project Amount	\$1,018,587

***The identified matching amount is 28.7% of the grant amount requested.**

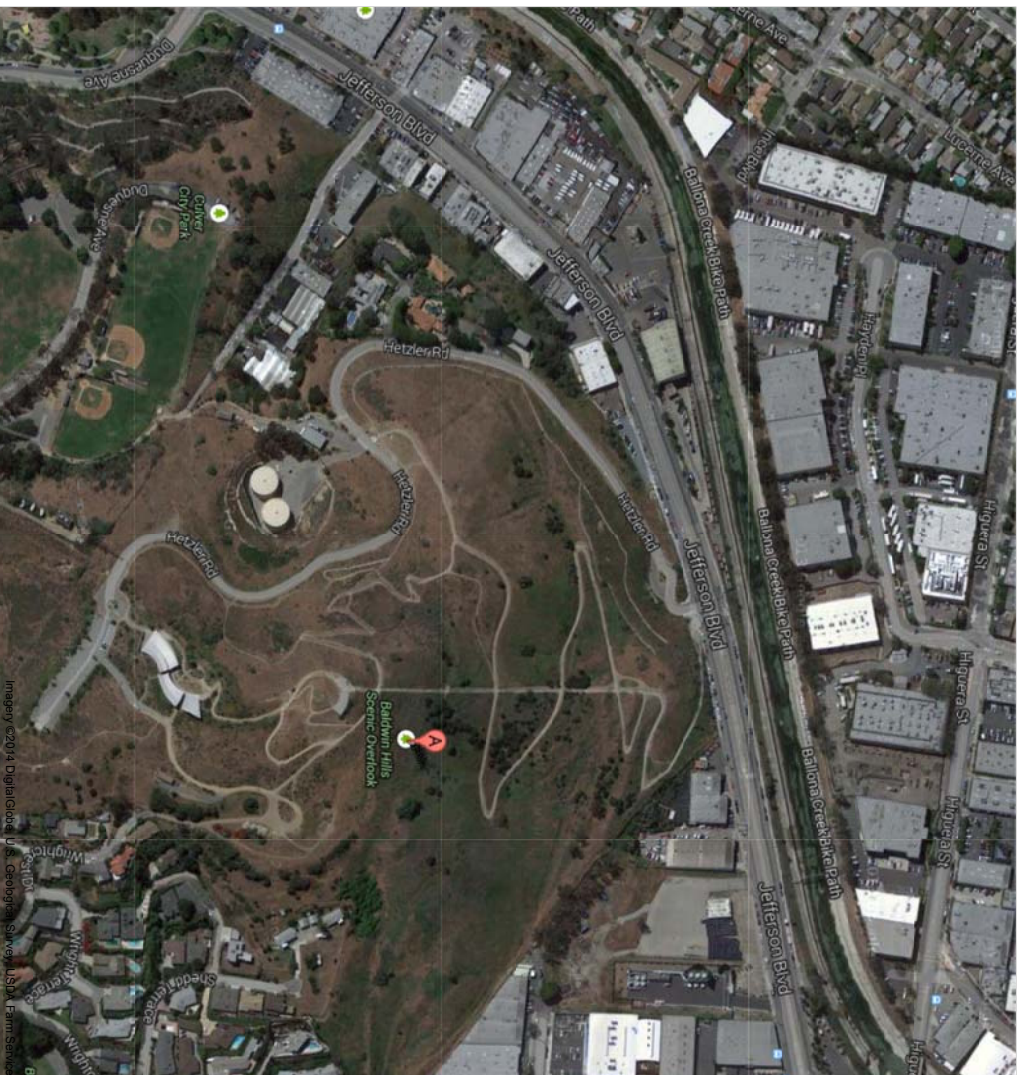
Attachment #1

COST ESTIMATE FOR HETZLER ROAD PEDESTRIAN TRAIL IMPROVEMENTS

Item	Description	Qty	Unit cost	Item Cost	BHC Grant	MRCA	Culver City
			\$	\$	\$	\$	\$
1	Contractor Mobilization	LS	LS	29,055	29,055		
2	Construction Survey	LS	LS	15,000	15,000		
3	Traffic Control	LS	LS	3,500	3,500		
4	Temp. Const Fence	1,520 LF	1.80	2,736	2,736		
5	Clearing/grubbing	37,500 SF	0.12	4,500	4,500		
6	Remove conc curb & gutter	1	LS	450	450		
7	Remove AC berm	1	LS	350	350		
8	Remove Ped ramp	1	LS	700	700		
9	Remove & reconnect V gutter	1	LS	37,300	37,300		
10	Excavation	1,800 CY	8	14,400	14,400		
11	Import dirt	482	30	14,460	14,460		
12	Temp erosion control	1	LS	3,500	3,500		
13	Parallel ped ramp	1	LS	1,500	1,500		
14	Ped ramp	1	LS	1,250	1,250		
15	Curb & Gutter	26 LF	24	624	624		
16	Relocate power pole	1	LS	10,000	10,000		
17	High visibility X walk	1	LS	1,500	1,500		
18	Sharrows	32 EA	300	9,600	9,600		
19	Cable fence	1,300	35	45,500	45,500		
20	Access stairs	2 EA	2,500	5,000	5,000		
21	Modify catch basins	6 EA	4,500	27,000	27,000		
22	Masonry wall	11,575 LF	17	196,775	196,775		
23	4" color PCC walk	15,500 LF	5	77,500	77,500		
24	Interceptor drain	1,550 LF	14	21,700	21,700		
25	Adjust water meter	7 EA	200	1,400	1,400		
26	Wall drains	8 EA	500	4,000	4,000		
27	Block wall footing	2,850 LF	15	42,750	42,750		
28	Street signs	8 EA	400	3,200	3,200		
29	Shrub/ground cover	2,900 SF	5	14,500	14,500		
30	Hydroseed	35,000 SF	0.35	12,250	12,250		
31	Water connection fee	1	LS	8,000	8,000		
Construction subtotal :				610,000	610,000		
10% Contingencies				61,000	61,000		
15% Construction management				90,000	90,000		
5% Contract city staff support				30,000	30,000		
Project design costs (MRCA funded)				227,587		227,587	
GRAND TOTAL				\$1,018,587	\$791,000	\$227,587	\$0
					BHC Grant	MRCA	Culver City



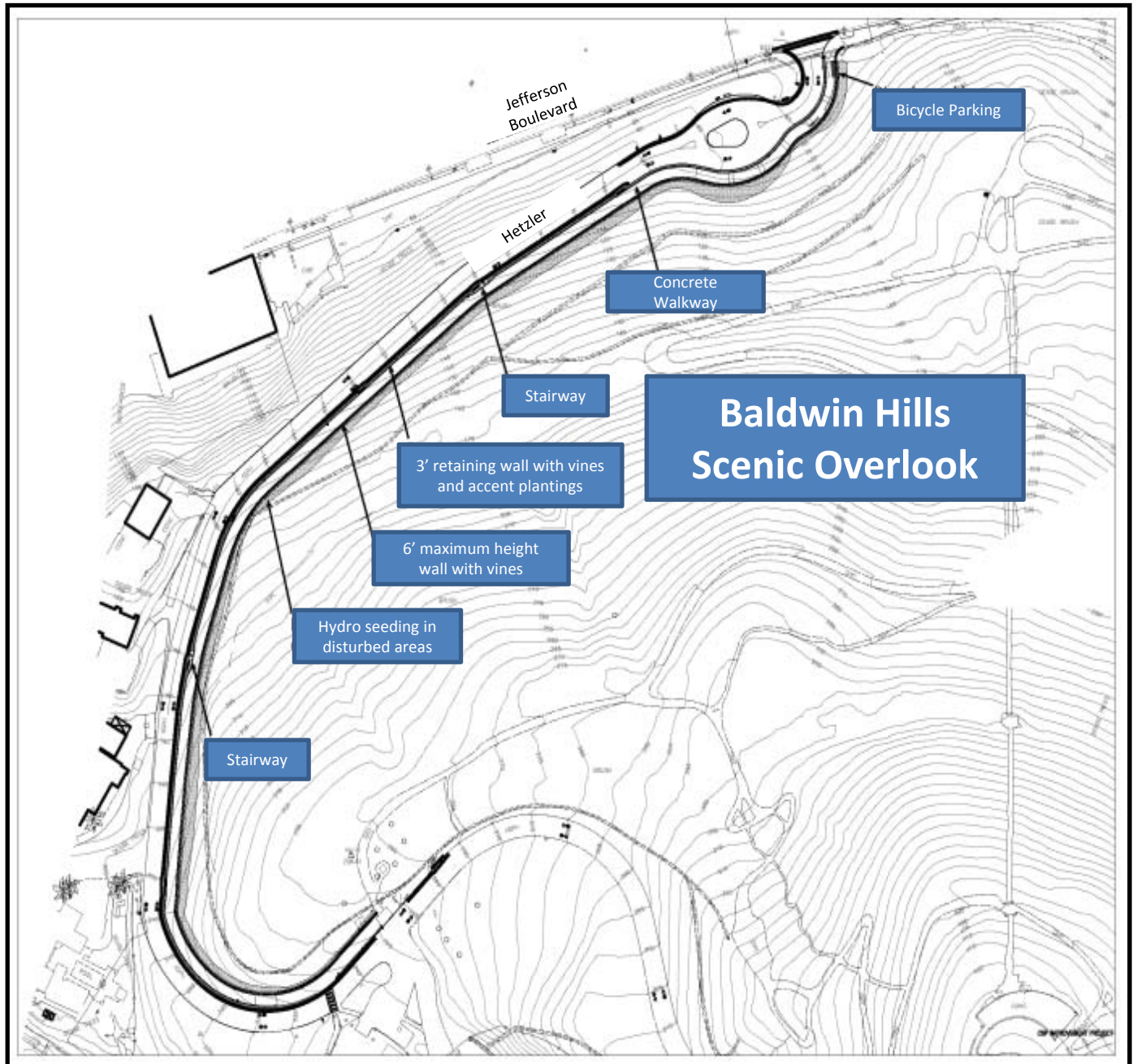
Attachment #1



To see all the details that are visible on the screen, use the "Print" link next to the map.

Imagery ©2014 DigitalGlobe, GeoEye, IGN, Aeri, USDA, Earthstar, GeoEye, Map data ©2014 Google -

Hetzler Road Pedestrian Trail (Project Area)





Vines

Anacapa Morning Glory
Calystegia 'Anacapa Pink'



- California native, low water use
- Up to 20' long
- Pink flowers in spring and summer

Island Morning Glory
Calystegia macrostegia



- California native, drought tolerant
- 12-25' long
- Pink flowers bloom intermittently

Twinberry
Lonicera involucrata



- CA native, low water
- 3'-10' H x 3' W
- Attracts hummingbirds
- Resistant to pollution

Chaparral Honeysuckle
Lonicera subspicata



- Endemic to California, drought tolerant
- Climbs 4'+
- White flowers, orange berries

California Wild Rose
Rosa californica



- California native, drought tolerant
- Up to 6' tall
- Pink flowers, thorns, attracts bees

Roger's Red Wild Grape
Vitis californica 'Roger's Red'



- California native, drought tolerant
- Climbing, 15'-20' long
- Bright red fall color

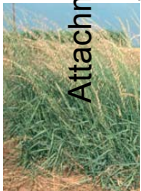
Southern California Grape
Vitis girdiana



- Southern California native, drought tolerant
- Vines up to 50' long
- Fruit toxic to dogs

Accent Plants

Sideoat Grama Grass
Bouteloua curtipendula



- California desert native
- 18"-24" H x 12"-15" W
- Pink flower spikes in spring & summer

Blue Wildrye
Elymus glaucus



- California native, low water
- Bunchgrass, 2'-3' tall
- Bluish blades, summer flowers

Coast Sunflower
Encelia californica



- California native, drought tolerant
- 3'-5' H&W
- Spring flowers

Canyon Prince Wild Island Rye
Leymus condensatus 'Canyon Prince'



- Southern CA native, drought tolerant
- 2'-3' H, 3'-4' spread
- Low maintenance

Dune Lupine
Lupinus chamissonis



- Endemic to California, drought tolerant
- 3'-5' H x 3' W
- Lavender flowers in spring

Sticky Monkey Flower
Mimulus aurantiacus



- California native, low water
- 4' tall
- Attracts hummingbirds, spring and summer flowers

White Sage
Salvia apiana



- California native, drought tolerant
- Up to 6' H&W
- Leaves fragrant, white flowers in spring

Culver **CITY**

Hetzler Road Pedestrian Trail Project

Background

Recognizing the need to improve access to the Baldwin Hills Scenic Overlook and strong support from the community for doing so, the City of Culver City has been working closely with State Parks to develop collaborative solutions. State Parks has indicated that it will issue a Right of Entry Permit to Culver City to construct the project. In a collaborative effort, a community meeting organized by the Culver City Public Works Department working with the State Parks was held on Jan 9, 2014 at the Baldwin Hills Overlook Visitor's Center. The purpose of the meeting was to inform Culver City residents and park patrons of the scope of the proposed improvements and to solicit their input. Some of the issues that were brought forward by the attendees included comments related to selection of plant materials, roadway erosion during construction, enforcement issues, adequate signage and public education. Many of the concerns were related to the education and direction given to park users to encourage the use of the new pedestrian trail in lieu of Hetzler Road roadway. The City has taken into account all of the suggestions and feedback from the community to be addressed throughout the course of the project and communicated to State Parks. A fact sheet (attached) with answers to frequently asked questions was distributed to all attendees.

Plans for Project Administration

The City of Culver City, Public Works Department has an established record in project management involving trails, roadways and other scopes of work. The final specifications of the project will be advertised for construction bidding. Following the selection process, the City will retain an outside consultant to manage and oversee the day-to-day construction of the project. The Public Works Department will provide administrative support and oversight throughout the duration of the project. Following completion and acceptance of the project, State Parks will resume all maintenance, operations and enforcement for the project area.

Related Experience

The City of Culver City has extensive experience managing large projects. The City Public Works Department recently completed the construction of a Baldwin Hills Conservancy Grant funded project to construct bicycle and pedestrian improvements on Jefferson Boulevard at Hetzler Road. The collaboration with the BHC was a positive experience that resulted in a highly improved intersection for pedestrians, bicyclists and vehicular drivers. The project received an award from the American Society of Civil Engineers (ASCE) for Outstanding Civil Engineer Project as well as an award from American Public Works Association (APWA) for Project of the year.

Attachment #1

Fiscal Capacity

The City of Culver City was incorporated in 1907 and currently has an annual Capital Project Budget over \$8 million. The City has a long history with the completion of successful projects that have benefited the residents of Culver City and surrounding communities. The City of Culver City will take the lead role in the Hetzler Road Pedestrian Trail project, while the long-term financial accountability of maintenance and operations will be the responsibility of State Parks. The City of Culver City is not expending any funds for design or construction of the project and will recover most of its costs for project administration through the grant allocation.

Hetzler Road Pedestrian Trail Fact Sheet



(Proposed rendering – Hetzler Road Pedestrian Trail)

Project Summary

The City of Culver City is requesting funding through the Baldwin Hills Conservancy (BHC) Proposition 84 Grant Program to support the Hetzler Road Pedestrian Trail project. The proposed trail leading up to the Baldwin Hills Scenic Overlook State Park is a collaborative effort with the State of California Department of Parks and Recreation (State Parks) to address issues of access for park users and the Culver City residents that live nearby. A pedestrian trail paralleling Hetzler road would provide new recreational opportunities for a large population of park users. The project seeks to meet the objectives the City of Culver City, State Parks and the BHC.

Frequently Asked Questions (FAQ's):

When will the project be confirmed?

The project is being submitted for grant approval to the BHC on January 24, 2014. Residents and users of the Baldwin Hills Scenic Overlook will be notified of the outcome of the meeting.

Will Hetzler Road be completely closed during construction?

During construction the road will remain open for residential and emergency vehicle access during construction. The road will be closed for pedestrians due to heavy construction equipment and material supply vehicles operating on the road. Construction hours are anticipated to occur Monday – Friday from 8 AM to 6 PM and on a select Saturday basis. After execution of the construction contract the public will be notified of any openings of the road for pedestrian access during non-construction times.

How will residents be informed of project updates?

After contract award we'll establish contact phone numbers (both during and after working hours) for the Contractor, City Staff and the City's Consultant Construction Manager. This information will be shared with all residents and other park user groups.

What will be the water source for dust control?

Dust control will be included in the City-Contractor. Contractor can bring their own water supply (in tanks) or can make agreements with the local water supplier to get water from nearby fire hydrants.

What will be the path of travel used for hauling?

After contract award the Contractor is required to provide haul routes for approval by the City. Generally this will exclude residential streets. The routes should be the most direct route from the construction site to the City limits such as Jefferson Blvd. The route information will be shared with the Police Department.

What types of sustainable components will be used in the design of the project?

Drought tolerant and California native plants will be utilized.

Will the contract with the selected contractor include repairs to any damage on existing road and curbs?

Yes. Repairs to damages on the road and curbs within the project area will be included in the contract.

Who is responsible for the trail and park after the construction is completed?

State of California Department of Parks and Recreation will maintain responsibility of the trail, which is within their jurisdiction of the State Park.

Contact Information

(310) 253-5618

Culver City Public Works

(213) 620-6152

State Department of Parks and Recreation

*Construction Management contact information will be provided to residents and posted for the public upon selection of a contractor.



Angeles District
1925 Las Virgenes Road
Calabasas, CA 91302

December 6, 2013

Charles D. Herbertson, PE LS
Director of Public Works/City Engineer
9770 Culver Blvd, 2nd Floor
Culver City, CA 90232

Dear Mr. Herbertson,

Since the opening of the Baldwin Hills Scenic Overlook in April 2009, park visitation has far exceeded expectations, in large part due to the unanticipated popularity of the steps, trails, and Hetzler Road as fitness destinations. Heavy pedestrian activity at the intersection of Jefferson Blvd. and Hetzler road prompted a recent successful partnership between California State Parks and Culver City, with support from the Baldwin Hills Conservancy (BHC), to fund and implement streetscape improvements along this busy roadway. The project, completed in January 2013 included construction of a lower parking area on Jefferson Blvd., installation of a traffic signal, crosswalk, landscaped medians, and sidewalks, thus tremendously improving pedestrian safety and traffic control at the park entrance. Unfortunately, attempts by State Parks to further control pedestrian traffic along Hetzler Road, through signage and Ranger Patrols, have remained largely unsuccessful due to the sheer volume of pedestrian traffic on this public road, and no alternative access way available for enforcement purposes.


With this in mind, California State Parks looks forward to continuing our partnership with Culver City and enthusiastically supports the city's grant application for additional funding from the Baldwin Hills Conservancy to complete the Hetzler Road Trail Project. Construction of a pedestrian trail along Hetzler Road will provide a safe location for pedestrians who have become accustomed to using Hetzler Road, in conjunction with the trails and steps, as part of the Baldwin Hills fitness loop. This designated, alternate pathway, will allow for a full closure of Hetzler Road to pedestrian traffic and enforcement of this closure through the issuing of citations. Having this alternate route in place for pedestrians is a prerequisite of a full pedestrian closure, which we strongly feel is necessary for public safety, enjoyment, and access to the park. The proposed terrace design, with grade separation, will provide an attractive, safe, and functional alternative for pedestrians currently using Hetzler Road in their fitness activities.

As with our previous partnership, California State Parks is prepared to issue Culver City a Right of Entry permit for construction activities and allow for construction staging adjacent to the park in the lower parking area. A Right of Entry permit will be issued subsequent to completion of our internal State environmental review which is currently underway. California State Parks is further committed, not only to costs outlined in the proposed project budget, but to accepting full responsibility for operation and maintenance of the trail, in perpetuity, upon completion of construction.

Attachment #1

California State Parks fully supports the City of Culver City and is committed to continued cooperation on this project. The Hetzler trail will provide a vital linkage as part of the larger Park to Playa regional trail and bookend our successful partnership with Culver City and BHC in the provision of a safer and more appealing destination for our park visitors.

Sincerely,

A handwritten signature in blue ink, appearing to read 'Craig Sap', is written over the printed name.

Craig Sap
Superintendent
California State Parks, Angeles District



Attachment #1



MOUNTAINS RECREATION & CONSERVATION AUTHORITY
Los Angeles River Center & Gardens
570 West Avenue Twenty-Six, Suite 100
Los Angeles, California 90065
Phone (323) 221-9944 Fax (323) 221-9934

December 16, 2013

Mr. David McNeill
Executive Officer
Baldwin Hills Conservancy
5120 West Goldleaf Circle, Suite 290
Los Angeles, CA 90056

**Letter of Support
Hetzler Road Improvements**

Dear Mr. McNeill:

On behalf of the Mountain Recreation and Conservation Authority (MRCA), I am writing this letter to support the improvements proposed by the City of Culver City on the Hetzler Road Improvement project.

It is our understanding that the City of Culver City is applying for a grant from the Baldwin Hills Conservancy (BHC) for construction of a pedestrian trail adjacent to Hetzler Road south of Jefferson Boulevard in the heavily used Baldwin Hills Scenic Overlook area under the jurisdiction of the State of California Department of Parks and Recreation. Currently, due to the absence of a separate pedestrian trail, pedestrians and joggers use the Hetzler roadway creating a pedestrian-vehicular conflict. MRCA supports this project which will mitigate this conflict by creating a separate pedestrian-only trail. Through grants from the Baldwin Hills Regional Conservation Authority (BHRCA), MRCA has funded the design costs for preparation of construction plans. These improvements are significant because they will be used as one of the resources and amenities within the future 13-mile Park to Playa regional trail.

It is also our understanding that the BHC grant requires a 25% local agency match and Culver City is proposing to offer the cost of design to satisfy this local match requirement. MRCA has no objection to this proposal. MRCA has estimated the total design costs to date to be \$227,587. Following is the breakdown of these costs:

Feasibility Study (approx. Hetzler portion) – \$21,000
Construction Documents (approx. Hetzler portion) - \$124,250
Hetzler Construction Observation - \$17,190
Re-design – \$65,147

GRAND TOTAL – \$227,587

Attachment #1

Mr. David McNeill
December 16, 2013

Page 2

If you have any questions, feel free to contact me at (323) 221-9944 extension 107.

Sincerely,

A handwritten signature in blue ink, appearing to read "Ana Petric".

Ana Petric
Deputy Chief of Urban Project and
Watershed Planning Division

cc: Charles Herbertson, Culver City Director of Public Works



January 10, 2014

David McNeill
Executive Officer
Baldwin Hills Conservancy
5120 Goldleaf Circle #290
Los Angeles, CA 90056

Subject: Support Letter for the Hetzler Road Pedestrian Project

Dear David:

I am writing to express my strong support for the City of Culver City's application for the Hetzler Road Pedestrian Trail leading up to the Baldwin Hills Scenic Overlook State Park as part of a collaborative effort with the State of California Department of Parks and Recreation (State Parks) to address issues of safety and quality of life for park users and the Culver City residents that live nearby. A pedestrian trail paralleling Hetzler road would provide new recreational opportunities for a large population of park users in a safe and secure manner.

As a frequent user of this Park, I appreciate the scenic vistas, natural habitat and recreational opportunities available in the park. Although the park is used by many for a wide variety of activities, the relatively narrow width of the road, lack of pedestrian facilities and residential needs, provides for insufficient space to accommodate all users of the facility.

The need for a pedestrian trail is prevalent and such a trail would provide a safer environment for pedestrians while increasing space available for vehicles. I understand State Parks has expressed their support of the project and has committed to posting signage prohibiting use of Hetzler Road by pedestrians and providing enforcement following completion of the project. The trail as proposed would go a long way to not only mitigating concerns of the residents but provide additional environmental protection for the area. In addition, a trail along Hetzler road will enhance not only visitors' experience in the Park, but increase their safety as well. This will greatly assist pedestrians and users of the road by providing them a safe path to utilize when visiting the Baldwin Hills Overlook, especially for families, which as you know, is paramount to our mission of encouraging children of all ages to be more active through walking and biking. The project will potentially clear the road of pedestrians for a safe navigation of vehicles to their homes or visiting the Baldwin Hills Overlook.

I enthusiastically support Culver City's grant application. Please feel free to contact me if you have any questions. Thank you for your consideration.

Jim Shanman
Founder, Walk 'n Rollers

BALDWIN HILLS CONSERVANCY (BHC)

RESOLUTION 14-01

RESOLUTION AUTHORIZING A MATCHING GRANT IN AN AMOUNT NOT TO EXCEED \$791,000 OF BHC PROP 84 FUNDS TO THE CITY OF CULVER CITY FOR THE HETZLER ROAD PEDESTRIAN TRAIL

WHEREAS, under Division 22.7 of the California Public Resources Code, the Baldwin Hills Conservancy was created to acquire open space and manage public lands within the Baldwin Hills area and to provide recreation, restoration and protection of wildlife habitat within the Conservancy territory; and

WHEREAS, Public Resources Code 32569 (a) states the Conservancy may award grants to local public agencies for the purposes of its division; and

WHEREAS, the City of Culver City is a local public agency incorporated as a city in 1917; and

WHEREAS, pursuant to Public Resources Code 75060, funds from the Safe Drinking Water, Water Quality and Supply, Flood Control, River and Coastal Protection Bond Act of 2006 are available for projects in the Baldwin Hills and Ballona Creek Watershed to promote access to and enjoyment of the coastal resources of the State; and

WHEREAS, the City of Culver City adopted Resolution 2013-R073 approving the submission of an application for local support from the BHC Prop 84 funds; and

WHEREAS, the objectives of the project are consistent with the funding source and grant requirements adopted by the BHC under resolution 10-06 and;

WHEREAS, pursuant to Public Resources Code 32565.5 (b) the Baldwin Hills Conservancy shall give priority to related projects that create expanded opportunities that provide recreation, aesthetic improvement, and wildlife habitat in the Baldwin Hills area; and

WHEREAS, as under Public Resources Code 15333 this action is exempt from the environmental impact requirements of the California Environmental Quality Act (CEQA); now

THEREFORE BE IT RESOLVED, THE BHC GOVERNING BOARD:

1. AUTHORIZES A MATCHING GRANT IN AN AMOUNT NOT TO EXCEED \$791,000 OF BHC PROP 84 FUNDS TO THE CITY OF CULVER CITY FOR THE HETZLER ROAD PEDESTRIAN TRAIL
2. ADOPTS THE RECOMMENDATIONS DATED JANUARY 24, 2014 FOR THIS ITEM
3. APPOINTS THE EXECUTIVE OFFICER, AS AGENT TO CONDUCT ALL NEGOTIATIONS, EXECUTE AND SUBMIT ALL DOCUMENTS INCLUDING, BUT NOT LIMITED TO AGREEMENTS, PAYMENT REQUESTS, AND CERTIFICATIONS WHICH MAY BE NECESSARY FOR THE COMPLETION OF THE AFOREMENTIONED PROJECT(S)

Passed and Adopted by the Board of the
BALDWIN HILLS CONSERVANCY

on _____, 2014.

Starlett Quarles
Chair

ATTEST: _____
Christina Bull-Arndt
Deputy Attorney General

BALDWIN HILLS CONSERVANCY

5120 West Goldleaf Circle, Suite 290

Los Angeles, CA 90056

Ph: (323) 290-5270

Fx: (323) 290-5278

www.bhc.ca.gov

Memorandum

To: Governing Board

Fr: David McNeill, Executive Officer

Date: January 24, 2014

Re: Item 6: Executive Officer Report

Projects Status Report

Please see the updated BHC Local Assistance / Capital Outlay Projects Status Report (attachment #1).

Fiscal Update

Please see BHC Summary Expenditure Sheet by Fund (attachment #2) and the BHC Prop 40 & Prop 84 Bond Cash Funds (attachment #3). The reports correspond with the end of month four (4) of the 2013-14 fiscal year.

Legislative Update

Below please find information on upcoming tentative hearings in the Senate and Assembly related to the 2014 water bond proposals. Staff plans to attend at least one of the committee hearings to share information about the conservancy's land and water conservation work in the Ballona Creek Watershed.

- The Assembly Water Parks and Wildlife Committee will host an informational hearing titled "The Need for a 2014 Water Bond- Local Perspectives" in Eureka on Friday, February 7th.
- SB 848 (Wolk) will be heard in the Senate Natural Resources and Water Committee on Tuesday, February 11th.
- SB 848 (Wolk) will be heard in the Senate Environmental Quality Committee on Wednesday, February 19th.
- AB 1331 (Rendon) will be heard in the Senate Natural Resources and Water Committee in February.

On January 13, 2014 Governor Brown issued a State of Emergency Declaration to address California's ongoing drought. To follow staff has included three of the directives that will have an immediate impact on our agency and its partners.

IT IS HEREBY ORDERED THAT:

1. State agencies, led by the Department of Water Resources, will execute a statewide water conservation campaign to make all Californians aware of the drought and encourage personal actions to reduce water usage. This campaign will be built on the existing Save Our Water campaign (www.saveourh20.org) and will coordinate with local water agencies. This campaign will call on Californians to reduce their water usage by 20 percent.
2. Local urban water suppliers and municipalities are called upon to implement their local water shortage contingency plans immediately in order to avoid or forestall outright restrictions that could become necessary later in the drought season. Local water agencies should also update their legally required urban and agricultural water management plans, which help plan for extended drought conditions. The Department of Water Resources will make the status of these updates publicly available.
3. State agencies, led by the Department of General Services, will immediately implement water use reduction plans for all state facilities. These plans will include immediate water conservation actions, and a moratorium will be placed on new, non-essential landscaping projects at state facilities and on state highways and roads.

2014 California Land Conservation Conference in Sacramento March 4-6th. Staff has registered to participate on March 5 & 6th.

- This conference, hosted by the California Council of Land Trusts (CCLT), will include workshops, an appraisers forum, executive directors and public agency summits, a conservation law forum, and networking opportunities.

Baldwin Hills Conservancy
Local Assistance / Capital Outlay Projects Status Report
1/24/14

Capital Outlay Grantee/Administrator	Project Title	ContractID	Fund Source	Funds Allocated	PROJECT STATUS
City of Los Angeles	Outdoor Improvements at Norman O. Houston Park	BHC11002	Prop 40	\$1,800,000	Pre-construction on sewer in-progress; construction schedule forthcoming; Project completion expected June 2014.
City of Culver City	Park to Playa Trail - Design Development of Pedestrian/Bicycle Ramp at Higuera Street	BHC11003	Prop 84	\$60,000	Design completion expected Spring 2014.
California Dept. of Toxic Substance Control (DTSC)	Environmental Monitoring and Soil Management Plan Implementation	BHC11004	Prop 40	\$465,000	DTSC will continue to monitor Soil Management Plan on upcoming construction projects.
Mountains Recreation and Conservation Authority (MRCA)	Milton Street Park Construction	BHC12000	Prop 84	\$2,000,000	Permitting still in-progress; expected to go out to bid early 2014.
Los Angeles County Dept. of Parks & Recreation	Stoneview Nature Center	BHC12002	Prop 40	\$5,000,000	Park program planning and site design in-progress; Project completion expected Winter 2015.
Mountains Recreation and Conservation Authority (MRCA)	Park to Playa Trail - Stocker Corridor Section	BHC12004	Prop 40	\$1,030,000	Construction documents in review; obtaining permits in Fall/Winter 2013; Expected to go out to bid early 2014.
University of California (USC)	Baldwin Hills Biota Update	BHC13003	Prop 84	\$140,794	Contract documents complete; Project to start early 2014.

<u>As of 10/31/2013</u>	<u>PCA #</u>	<u>Remaining Appropriation</u>	<u>EXP + ENC</u>	<u>BALANCE</u>
<u>ELPF - #0140, Support</u>				
2013 Budget Act Item 3835-001-0140	10001	\$ 351,000.00	\$ 131,301.50	\$ 219,698.50
<u>Prop 40 - #6029, Support</u>				
2013 Budget Act Item 3835-001-6029	10005	\$ 115,000.00	\$ 30,452.66	\$ 84,547.34
<u>Prop 84 - #6051, Support</u>				
2013 Budget Act Item 3835-001-6051	10009	\$ 101,000.00	\$ -	\$ 101,000.00
Total Support Balance:				\$ 405,245.80
<u>Prop 40 - #6029, Capital Outlay</u>				
2005 Budget Act Item 3835-301-6029	20003	\$ 8,648,000.00	\$ 2,975,288.19	\$ 5,672,711.81
2004 Budget Act Item 3835-301-6029	20002	\$ 7,200,000.00	\$ 3,794,725.06	\$ 3,405,274.94
2003 Budget Act Item 3835-301-6029	20001	\$ 7,200,000.00	\$ 5,199,999.11	\$ 2,000,000.89
2002 Budget Act Item 3835-301-6029	22000	\$ 15,000,000.00	\$ 14,473,955.70	\$ 526,044.30
Total Prop 40 Cap Outlay Balance:				\$ 11,604,031.94
<u>Prop 84 - #6051, Capital Outlay</u>				
2009 Budget Act Item 3835-301-6051	30002	\$ 3,050,000.00	\$ 980,280.00	\$ 2,069,720.00
2008 Budget Act Item 3835-301-6051	30001	\$ 3,050,000.00	\$ -	\$ 3,050,000.00
2007 Budget Act Item 3835-301-6051	30000	\$ 3,050,000.00	\$ 2,000,000.00	\$ 1,050,000.00
Total Prop 84 Cap Outlay Balance:				\$ 6,169,720.00

BOND CASH FUNDS

As of 10/31/2014

2010 SPRING BAB SALE		CASH ALLOCATED	EXPENDITURES	BALANCE
	PROP 40:	\$579,277.00	579277	\$0.00
	PROP 84:	\$829,272.44	819999.26	\$9,273.18
2010 DECEMBER BAB SALE				
	PROP 40:	\$603,452.18	239694.32	\$363,757.86
2010 DECEMBER TE SALE				
	PROP 40:	\$60,547.82	0	\$60,547.82
2010 SPRING TE SALE				
	PROP 40:	\$1,415,869.68	0	\$1,415,869.68
	PROP 84:	\$2,473,145.41	0	\$2,473,145.41
2009 OCTOBER TE SALE				
	PROP 40:	\$782,332.87	307995.21	\$474,337.66
	PROP 84:	\$197,000.00	39254.99	\$157,745.01
2009 MARCH SALE				
	PROP 40:	\$901,961.01	901961.01	\$0.00

Total Available Bond Cash:

\$4,954,676.62