

**Baldwin Hills Conservancy (BHC)**  
**NOTICE OF PUBLIC MEETING**  
*The meeting of the Baldwin Hills Conservancy will be held*  
**Friday, June 24, 2011 from 10:00 a.m. - 12:00 p.m.**  
**Kenneth Hahn State Recreation Area**  
**Community Center**  
**4100 South La Cienega Blvd.**  
**Phone (323) 298-3660**

**Teleconference Location:**  
**Natural Resources Agency**  
**1416 Ninth Street, 13<sup>th</sup> Floor**  
**Conference Room 1305**  
**Sacramento, CA 95814**

**10:00 am:**                    **CALL TO ORDER**        **Mr. Lloyd Dixon, Chairman**

**MEETING AGENDA**

PUBLIC COMMENTS ON AGENDA OR NON-AGENDA ITEMS WILL BE CALLED PRIOR TO ACTION ITEMS

***Public Comment and Time Limits: If you wish to speak on an agenda item cards are available near the door to the meeting room. Individuals wishing to comment will be allowed up to three minutes to speak. Speaker times may be reduced depending on the number of speakers.***

1. Roll Call
2. Approval of Minutes (May)
3. Consideration of a resolution authorizing the Executive Officer to amend agreement #BHC07011 between the BHC and the Mountains and Recreation Conservation Authority for a term extension and deliverables– Gail Krippner, Associate Governmental Program Analyst
4. Consideration of a resolution authorizing a grant in an amount not to exceed \$400,000 of BHC Prop 84 funds to Los Angeles Infrastructure Academy (*dba*) Generation Water for invasive species removal and habitat restoration projects within the conservancy territory – David McNeill, Executive Officer
5. Consideration of a resolution authorizing a grant in an amount not to exceed \$570,000 of BHC Prop 84 funds to Culver City for streetscape and pedestrian access improvements on Jefferson Blvd adjacent to the Scenic Overlook and Ballona Creek – David McNeill, Executive Officer
6. Executive Officer Report
7. Ad Hoc Committee Report

8. Board Member announcements or agenda items for future meetings

Next meeting is tentatively scheduled for Friday, July 29, 2011 at 10:00 am.

***Pursuant to Government Code Section 11126 subdivision (c)(7)(A), Section 11126.3(a), and Section 11126(e), the Conservancy may hold a closed session to discuss and take possible action regarding instructions on real estate negotiations, on personnel matters and/or to receive advice of counsel on pending or potential litigation. Confidential memoranda related to these issues may be considered during such closed session discussions.***

## **ADJOURNMENT**

In accordance with the Americans with Disabilities Act of 1990, if you require a disability related modification or accommodations to attend or participate in this meeting, including auxiliary aids or services, please call Gloria Dangerfield at the Conservancy at (323) 290-5270 at least five days prior to the meeting. For more information about the Conservancy, you may visit our website at **[www.bhc.ca.gov](http://www.bhc.ca.gov)**

**MINUTES OF THE PUBLIC MEETING  
of the  
BALDWIN HILLS CONSERVANCY  
May 13, 2011**

**CALL TO ORDER**

The public meeting of the Baldwin Hills Conservancy was called to order by Chair Lloyd Dixon at 10:15 a.m. The meeting was held inside the Community Center at Kenneth Hahn State Recreation Area, 4100 South La Cienega Blvd., Los Angeles, CA 90056.

**I Roll Call**

**Members Present:**

(Teleconference) Julie Alvis, Ken DaRosa. Vice Chair Allan Boodnick, Chair Lloyd Dixon, Allan Kingston, Robert Jones, Barbara Romero, Patricia O'Toole, Patrick Reynolds, Greg Scott. Russ Guiney (arrived after roll)

**Members Absent:**

Bobbie Parks, Starlett Quarles, Supervisor Mark Ridley-Thomas, Ronilee Clark, Sara Amir, and Joan Cardellino.

**Staff Present:**

David McNeill, Gail Krippner, Gloria Dangerfield, and Rosana Miramontes.

**II. Oath of Office**

The Oath of Office was administered by Deputy Attorney Rosana Miramontes to new members Ken DaRosa (designee for the State Department of Finance) Patrick Reynolds (designee of the Director for Culver City Department of Parks, Recreation and Community Services) and Barbara Romero (designee of the Executive Director for Santa Monica Mountains Conservancy).

**III. Presentation on the Updated ADA Rules and 2010 Standards for Accessibility Design - Jennifer Harris, Accessibility Section Chief – California State Parks and Jason Spann, Associate Park and Recreation Specialist – California State Parks**

Mr. McNeill stated that in last month's board meeting, a discussion on getting from the Baldwin Hills to the ocean via the Ballona Creek trail aka Park to Playa, sparked an interest in making members aware of the recent developments made by Federal rulings on accessibility. He introduced Jason Spann (teleconference) who gave an overview on general accessibility guidelines that relate to recreational trails. He also covered the Department of Justice's Other Power Driven Mobility Devices (OPDMD) policy addressing transportation for disabled persons.

**IV. Presentation on the Irrigation Water Efficiency Survey Conducted at Kenneth Hahn State Recreation Area – Marcus Castain, CEO, Generation Water**

Marcus Castain, founder and CEO of Generation Water (non-profit) focuses on workforce development/green jobs and water industry. His company completed a pro bono project for County Parks and Recreation and as a result of their study, found 38.4 % of the park's irrigation valves malfunctioning. Mr. Castain has also been working with BHC staff on a proposal on invasive species management.

## **V. Approval of Minutes (April)**

Member Guiney pointed out one correction; John Wicker attended April's meeting and his name needed to be reflected in the minutes. Member Jones made the motion to approve the minutes as corrected. The Chair called for the vote. All ayes, motion carries.

## **VI. Public Comment**

Jim Lamm, Ballona President of Ballona Creek Renaissance, reported their mission is connecting the creek to communities. They have put out a newsletter, which can be accessed on their website, [www.ballonacreek.org](http://www.ballonacreek.org). The newsletter includes articles on the park master plan and the creek.

## **VII. Executive Officer Report**

Mr. McNeill went over his written report that included:

- Project status updates
- Bond balances/appropriations
- Prop 84 funds

Following Mr. McNeill's report, the Chair asked Mr. McNeill to give an update on the Prop 84 grant applications. Member Kingston asked about progress on installing a stoplight or creating a pathway or trail on Jefferson for pedestrian crossing to the Baldwin Hills Scenic Overlook. Mr. McNeill stated the process has been in three stages of development and California State Parks has been working on solutions with the City of Culver City.

Chair Dixon asked Mr. McNeill about the plans for Prop 40 funds. Mr. McNeill stated that the funds were available for the Park to Playa Trail and Milton Street projects.

## **VIII. Ad Hoc Committee Reports**

There were no reports.

## **IX. Board Member Announcements or Agenda Items for Future Meetings**

Member Jones thanked the new members upon their board appointment and the quality of service they will be bringing to the community and Baldwin Hills Conservancy board.

Member Guiney acknowledged new member Patrick Reynolds.

## **ADJOURNMENT**

There being no further business brought before the board, the meeting was adjourned at 11:40 a.m.

Approved:

Lloyd Dixon  
Chairman

## BALDWIN HILLS CONSERVANCY

5120 West Goldleaf Circle, Suite 290

Los Angeles, CA 90056

Ph: (323) 290-5270

Fx: (323) 290-5278

www.bhc.ca.gov

---

### Memorandum

**To: Governing Board**

**Fr: Gail Krippner, Associate Governmental Program Analyst**

**Date: June 24, 2011**

**Re: Item 3:** Consideration of a resolution authorizing the Executive Officer to amend contract #BHC07011 between the BHC and Mountains Recreation and Conservation Authority (MRCA) for term extension and deliverables

**Recommendation:** Approve resolution 10-07 authorizing the Executive Officer to amend the term by twelve months and allow for 90% construction documents as deliverables for contract #BHC07011 between the BHC and MRCA for the Milton Street Site Planning and Design Project.

**Background:** On June 30, 2007, the Governing Board of the BHC approved Resolution 07-13 which authorized a matching grant to the MRCA in an amount up to \$75,000 of BHC Proposition 40 funds.

The Project includes planning, design of the Milton Street site, a 1.2-acre rectangular parcel acquired in part with BHC Prop 40 funds. The parcel is the last large contiguous open space adjacent to the Ballona Creek Trail and Bike Path and is located across the street from a pre-school and middle school.

The approved Conceptual Design includes: landscaping, new bike path alignment, storm water best management practices (BMP) features and public access elements for the park and green street. *See drawing, Attachment B.*

In March 2011, Mountains Recreation and Conservation Authority (MRCA) staff submitted a request for a twelve (12) month extension of the performance period to June 30, 2012. At that time, the BHC was informed that it was necessary due to the newly-enforced U.S. Army Corps of Engineers (Corps) U.S. Code Section 408 levee vegetation policy that could impact the design of this park project.

The U.S. Army Corps of Engineers (Corps) was instructed by Congress to make "safety" their highest priority and as a result is implementing a policy that prohibits any

improvements on or within 15 feet of a Corps-built channel levee. This policy may affect the design of Project components such as:

- Planting design
- Storm water treatment element design
- Overlook/shade structure design

More time is needed so MRCA staff may coordinate, communicate and meet with the Corps, and other permitting agencies, to ensure the project design and Construction Documents (CD's) are better informed and will meet all existing policies and specifications. The resulting CD's will be previewed by the permitting agencies allowing and ensuring a more effective, efficient and successful permitting and future construction processes.

Design clarifications will be based on the current completed final Conceptual Design. The intent is for Milton to be a Low Impact Development (LID) demonstration project that can exhibit how a park project of this size and location can work within the Corps' existing policies. This is expected to be a multi-month process.

If approved, the twelve month extension would provide time to meet and coordinate with the permitting agencies (Corps, County of Los Angeles and City of Los Angeles) to develop better informed, pre-reviewed CD's that will meet all new and existing policies such that a functional and permissible product is the end result. The final deliverable for this project will now be 90% CD's. The CD's are only considered 100% after all permits are retained for construction.

Based on the revised timeline, complete (90%) CD's are expected before June 30, 2012. The timeline extension does not impact the contract budget or projected expenditures.

*See updated timeline, Attachment A.*



**MOUNTAINS RECREATION & CONSERVATION AUTHORITY**  
 Los Angeles River Center and Gardens  
 570 West Avenue Twenty-six, Suite 100  
 Los Angeles, California 90065  
 Phone (323) 221-9944 Fax (323) 221-9934

## Attachment A

### Ballona Creek - Milton St Park Planning Detailed Work Plan

Revised June 14, 2011

Task:	Completion Date	Total	SCC:	BHC:
1. Design and Construction Drawings	June 30, 2012	\$ 87,500	57% \$ 50,000	43% \$ 37,500
2. Project Management and Regulatory Compliance	June 30, 2012	\$ 77,000	55% \$ 42,000	45% \$ 35,000
3. Reimbursable Expenses	June 30, 2012	\$ 10,500	76% \$ 8,000	24% \$ 2,500
Total		\$ 175,000	\$ 100,000	\$ 75,000

#### Task 1. Conceptual Design and Construction Documents

Schedule: March 2008 to June 2012

Budget: \$37,500

Subcontractor: SWA Group, PSOMAS, KPFF, and P2S

Conceptual Design will include the creation of preliminary conceptual designs for a proposed 1.2-acre multi-benefit park. Designs will address ADA accessibility according to federal law. The Conceptual Design Plan will be the basis for a CEQA Initial Study and analysis of permitting requirements. Following a public meeting, and project partner consensus on the concept design, 90% Construction Documents will be completed.

Project Tasks / Milestones	Timeline
Obtain Topo Survey and Soils Report.*	April 2008 – August 2008
Public meeting #1 and creation of 3 preliminary conceptual design options.*	June 2008
Public meeting #2 and creation of 1 preliminary conceptual design.*	July 2008
Public meeting #3 and presentation of final preliminary conceptual design.*	August 2008
MRCA Internal and funder review of Conceptual Design.	September 2008 – December 2008
Project on-hold per BHC memo dated 12/19/2008.	December 2008 to November 2009
Project restart and development of Project Partner (BHC, SCC, MRCA) consensus on Final <u>Conceptual Design</u> . Preparation of budgetary cost estimate to identify probable construction cost for the scope of work.	January 2010 – February 2010
Hire PSOMAS as project's Civil Engineer for storm water component.*	February 2010
Continued development of Final Conceptual Design & Schematic Landscape Package based on consensus.*	February 2010 to June 2010

# Attachment A

Ballona Creek – Milton St Park

Revised June 14, 2011

2

Hire Shannon & Wilson for Geotechnical Survey and Report to help finalize Conceptual Design.*	June 2010
Development of final park design, cost estimate and technical sections of specifications based on storm water management study results.*	June 2010 to July 2010
Project Partner review and consensus of final park design and cost estimate.	August 2010 – September 2010
Sub-consultant meeting to discuss feedback on final design and completion schedule.	November 2010
Hire MKE Engineering for Final Utility and Electrical Survey for CDs.*	December 2010
Approve KPFF & P2S as project's Structural and Electrical Engineering Firms for CDs.	January 2011
Receive information regarding US Army Corps of Engineers (USACE) levee policy which may affect/alter the Final Conceptual Design.*	February 2011
Meet with USACE to discuss Final Conceptual Design as it pertains to the policy and ways to work together.	May 2011
Develop and submit a Cross-Section of the Milton property (including existing and proposed elevations, dimensions, etc.) per the request of the USACE.*	June 2011
<ul style="list-style-type: none"> <li>- Continue to meet and communicate with the USACE, County of LA, and City of LA (all permitting Agencies) to ensure an informed project design that meets all policies and specifications.</li> <li>- Refine and submit any and all requested or required designs, details, and specifications.*</li> <li>- Discuss and determine which permits will be required for the CDs and their corresponding costs and timelines.</li> </ul>	June 2011 – November 2011
Generation of Construction Documents (CDs) for a 50% progress review. Refinement of cost estimates of probable construction cost based on 50% completion of CDs (if needed).*	December 2011 to February 2012
Project Partner review of 50% complete CDs and cost estimate and meetings to obtain input and comments from County of Los Angeles concerning the design based on 50% CDs.	February 2012 to March 2012
Generation of Construction Documents (CDs) for a 90% progress review. Refinement of cost estimates of probable construction cost based on 90% completion of CDs.*	March 2012 to April 2012
Project Partner review of 90% complete CDs and cost estimate.	April 2012 to May 2012
Project close-out	June 2012

\* Denotes project deliverable



# Attachment A

Ballona Creek – Milton St Park

Revised June 14, 2011

3

## Task 2. Project Management and Regulatory Compliance

Schedule: March 2008 to June 2012

Budget: \$35,000

Subcontractor: n/a

Project Management will consist of coordination and management of sub-consultants, budget management, coordination with all stakeholders, presentation of information to the MRCA Board, coordination with all permitting agencies (US Army Corps of Engineers, Los Angeles County and City of Los Angeles) and compilation of final reports. Public meetings and presentations will be held during the design process. MRCA staff will also conduct an analysis of permitting requirements for the Final Conceptual Design Plan and Construction Documents. Regulatory Compliance will include the preparation of a CEQA Initial Study to determine any potential environmental impacts of the Finals Conceptual Design Plan. The Initial Study and its determination will be presented to the MRCA Board for adoption.

Project Task / Activity Description	Timeline
MRCA staff coordination and management of design sub-consultant, budget management, coordination of stakeholders, and coordination of public meetings and presentations related to the Conceptual Design Plan.	March 2008 to December 2008
Project on hold per BHC memo dated 12/19/2009	December 2008 to November 2009
MRCA staff coordination and management of sub-consultants, budget management, coordination with stakeholders, presentation of information to the MRCA Board, coordination of Construction Document review by Project Partners, presentation of project to the MRCA Board, meetings with various permitting agencies (USACE, County of LA and City of LA) regarding Final Conceptual Design and compilation of final reports.	November 2009 to June 2012
Analysis of permitting requirements based on Final Conceptual Design and meetings with the various permitting agencies.	June 2011 to June 2012
Preparation of CEQA Initial Study based on Final Conceptual Design	September 2011 to June 2012

## Task 3. Reimbursable Expenses

Schedule: March 2008 to June 2012

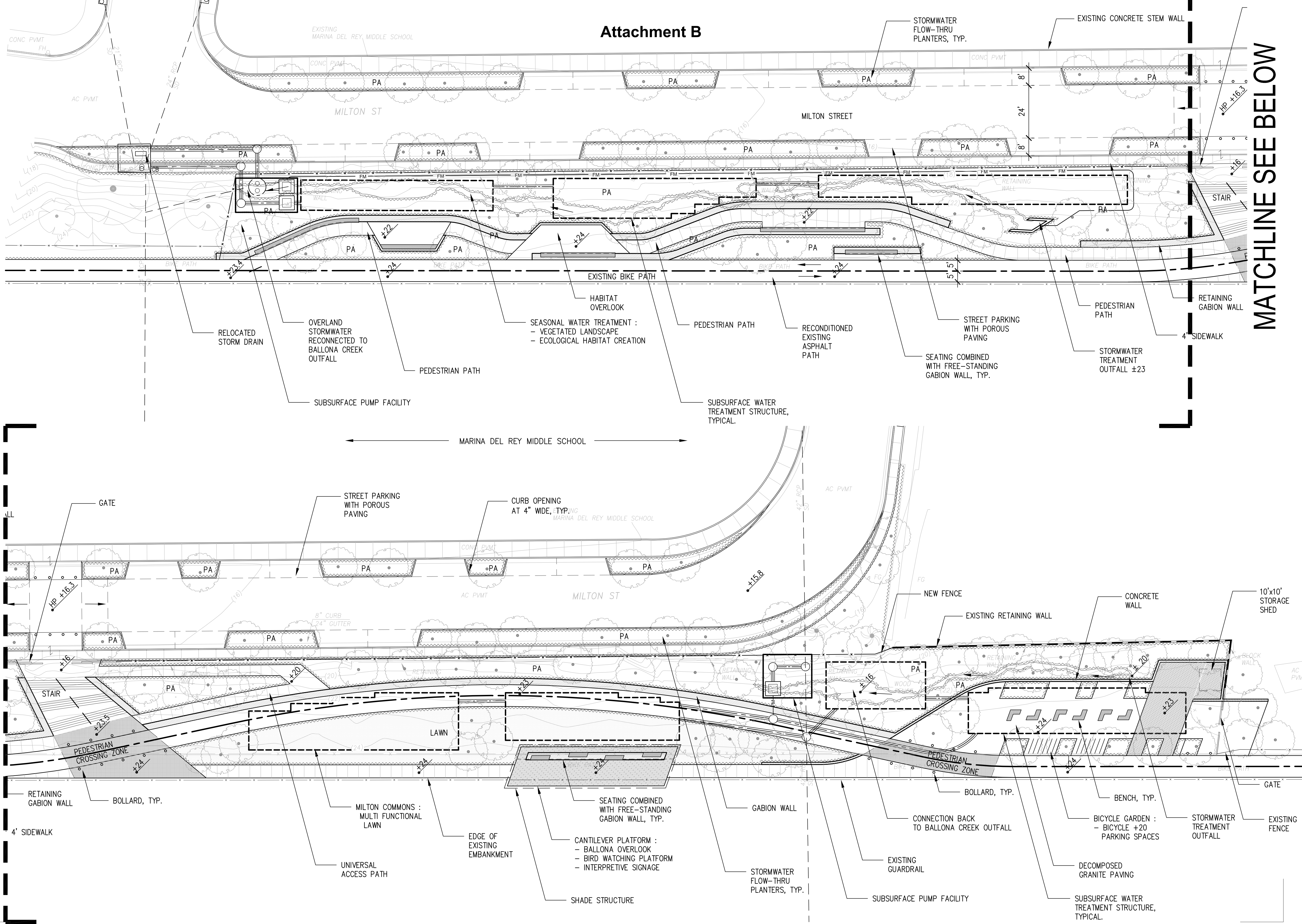
Budget: \$2,500

Subcontractor: n/a

Reimbursable Expenses will include low-cost items required to carry out the scope of work such as printing, plotting, postage, vehicle use, and travel costs. Reimbursable Expenses incurred by the design consultant are also included in this task.

## Attachment B

**MATCHLINE SEE BELOW**



## BALDWIN HILLS CONSERVANCY

5120 West Goldleaf Circle, Suite 290

Los Angeles, CA 90056

Ph: (323) 290-5270

Fx: (323) 290-5278

www.bhc.ca.gov

---

### Memorandum

**To: Governing Board**

**Fr: Grant Review Ad Hoc Committee – Allan Kingston, Chair**

**Date: June 24, 2011**

**Re: Item 4:** Consideration of a resolution authorizing a grant in an amount not to exceed \$400,000 of BHC Prop 84 funds to Los Angeles Infrastructure Academy (dba) Generation Water for invasive species removal and habitat restoration projects within the conservancy territory

**Recommendation:** Approve resolution 11-05, authorizing a grant in an amount not to exceed \$400,000 of BHC Prop 84 funds to Los Angeles Infrastructure Academy (dba) Generation Water, for invasive species removal and habitat restoration projects with the conservancy territory.

**Background:** Members Allan Kingston and Joan Cardellino convened to review BHC Prop 84 grant applications on June 15, 2011. The application submitted by the Los Angeles Infrastructure Academy (dba) Generation Water was assessed using the criteria adopted by the BHC in April 2011. The proposal stood on the merits of its innovation and the project's direct correlation to the core of the Conservancy's mission. The habitat restoration program incorporates field training, workforce development, stewardship and community building into a coherent proposal that would provide multiple benefits to the parklands.

The project application (see attachment #2) requests a 60% match in the amount of \$399,720 for implementation of a two and half year effort to identify, map and remove invasive plants, while restoring native habitat to the Baldwin Hills Parklands. Working with an advisory group, a priority list of invasive for eradication will be developed as well as a plan for restoring habitat in highly visible and or remnant areas. An added element of volunteer corps building through community outreach, training workshops and workforce development will increase the probability of a sustaining a cadre of stewards to continue the work into the future.

The committee's assessment of the project description and narrative yielded the following top five rankings goals of the Baldwin Hills Park Master Plan and the BHC's Strategic Plan: 1) protects and restores natural habitat; 2) protects watersheds

connecting to the Santa Monica Bay; 3) restores industrial lands to park and open space purposes;. 4) emphasizes connections between existing parks, trails and urban streams; 5) protects critical view sheds.

Drawing on important lessons learned from past successes, including California Conservation Corps invasive species removal program at Kenneth Hahn State Recreation Area and the Los Angeles Audubon Society's Greenhouse Intern Program at the Scenic Overlook, Generation Water has developed a community based approach to habitat restoration within the entire BHC territory. The proposal will provide a blue print for ongoing stewardship and volunteer restoration projects.

The committee prioritized the Baldwin Hills Park Lands Habitat Restoration proposal a 9 on an ascending scale from one to ten.

**Baldwin Hills Parklands Habitat Restoration**

**Los Angeles Infrastructure Academy dba Generation Water**

**PROP 84 LOCAL ASSISTANCE GRANT PROJECT REQUIREMENTS**

(For use in the determination of the priority of Conservancy grants and projects authorized under Division 22.7 of the California Public Resources Code)

**STANDARD REQUIREMENTS**

**a. Located within the BHC territory**

Site map and narrative identify project within the Conservancy territory and boundaries as described in PRC 32553 (a).

**b. Promotion of the Conservancy's statutory programs and purposes**

*PRC 32565.5 (a):* Conservancy to develop and coordinate an integrated program of resource stewardship so the entire Baldwin Hills area is managed for optimum recreational and natural resource values based upon the needs and desires of the surrounding community.

*PRC 32565.5 (b):* Give priority to related projects that create expanded opportunities that provide recreation, aesthetic improvement, and wildlife habitat in the Baldwin Hills area.

**c. Consistency with purposes of Prop 84 statute**

*PRC 75060:* Bond funds are available for projects to protect and restore natural habitat values in coastal waters and lands in the Ballona Creek Watershed.

**d. Consistency with the Baldwin Hills Park Master Plan**

*Natural Habitat*, page 43, BHPMP: "Opportunities exist to create connections and produce much larger habitat areas, protect populations of native plants and animals unique to Southern California, establish large natural preserve areas, increase the diversity of plant and animal communities and preserve the overall environmental health of the region. "

**e. Greater-than-local interest**

With nearly 3 million Californians residing in a five-mile radius of the Baldwin Hills territory (according to the 2000 census data) within the Ballona Creek Watershed, and over 58 million trip visits to the Los Angeles area annually by Californians alone, the land resources in the Baldwin Hills represent an extraordinarily unique value to the entire state. This project promotes and implements California's watershed conservation policies in one of the most densely populated areas of the country.

**f. Demonstrated expertise in the proposed program area**

Generation Water is partnering with the Los Angeles and San Gabriel Rivers Watershed Council on this project. Setting strategies for successful restoration management requires accurate information on the impacts of invasive plants, which habitats they invade, and their potential to overtake natives. The partners at the Los Angeles and San Gabriel Rivers Watershed Council created the Weed Watch Program in the fall of 2005 as a springboard for developing a centralized invasive plant management system in the Los Angeles region. Working with an advisory group of habitat specialist, parameters for restoration efforts can be set and implemented based on the consensus of local experts.

**ADDITIONAL PRIORITIES**

**g. Leverage**

The applicant is providing a 40% match with Green Innovation Funds already awarded through the California Employment Workforce Development Department. This \$258,912 match would leverage public funding within the BHC's territory and demonstrate the BHC's capacity to partner with innovative local agencies.

**j. Resolution of more than one issue**

This project helps the natural eco-systems within the last large open space in the Ballona Creek watershed. Restoration work in the field will improve the ratio of habitat zones to degraded or depleted invasive areas. Workshops and training will build awareness about stewardship and sustainability of native plants. Volunteers, park staff and community members will substantially increase level of active participation in long-term management of habitat within the territory.

**k. Readiness**

The Generation Water staff is positioned to start the project in a timely manner. They currently have a working relationship with the County of Los Angeles Department of Parks and Recreation who manage the project site.

**I. Realization of prior BHC goal**

The project will build on past invasive species removal within the BHC territory by creating an inventory of the most prevalent plants and a methodology for removal and replacement with natives. Restoration efforts will primarily take place in areas that feature canyon vistas, trails and other outdoor enhancements developed through conservancy investment.

\



**State of California - The Natural Resources Agency  
BALDWIN HILLS CONSERVANCY**

**APPLICATION FOR LOCAL ASSISTANCE GRANT**

<b>PROJECT NAME</b> Baldwin Hills Park Lands Habitat Restoration	<b>GRANT AMOUNT</b> \$399,720							
	<b>ESTIMATED TOTAL PROJECT COST</b> (State Grant and other funds) \$655,632							
<b>GRANTEE (Agency and address-including zip code and email)</b> Los Angeles Infrastructure Academy (aka Generation Water) 700 N. Alameda St. Fl. 4-570 Los Angeles, CA 90012 <a href="mailto:info@generationwater.org">info@generationwater.org</a>	<b>COUNTY</b> Los Angeles	<b>NEAREST CITY</b> Los Angeles						
	<b>PROJECT ADDRESS</b> 4100 South La Cienega Boulevard Los Angeles, CA 90056							
	<b>NEAREST CROSS STREET</b> Rodeo Road							
	<b>SENATE DISTRICT NO.</b> 26	<b>ASSEMBLY DISTRICT NO.</b> 47						
<b>Grantee's Representative Authorized in Resolution:</b> <table border="0"> <tr> <td><b>Name</b></td> <td><b>Title</b></td> <td><b>Phone</b></td> </tr> <tr> <td>Marcus Castain</td> <td>CEO</td> <td>213-687-0781</td> </tr> </table>			<b>Name</b>	<b>Title</b>	<b>Phone</b>	Marcus Castain	CEO	213-687-0781
<b>Name</b>	<b>Title</b>	<b>Phone</b>						
Marcus Castain	CEO	213-687-0781						
<b>Person with day-day responsibility for project (if different from authorized representative):</b> <table border="0"> <tr> <td><b>Name</b></td> <td><b>Title</b></td> <td><b>Phone</b></td> </tr> <tr> <td>Drew Ready</td> <td>Sustainable Landscapes Program Manager</td> <td>213-229-9951</td> </tr> </table>			<b>Name</b>	<b>Title</b>	<b>Phone</b>	Drew Ready	Sustainable Landscapes Program Manager	213-229-9951
<b>Name</b>	<b>Title</b>	<b>Phone</b>						
Drew Ready	Sustainable Landscapes Program Manager	213-229-9951						

<b>Brief description of project:</b> Generation Water, the Los Angeles and San Gabriel Rivers Watershed Council, and Mujeres de la Tierra will undertake a 2 1/2 year effort to identify, map, and remove invasive plants and restore native habitat to the Baldwin Hills Park Lands. A technical advisory group will guide the initiative and a community building effort will develop a base of volunteers committed to restoring the Park Lands to their native beauty.
---

I certify that the information contained in this project application form, including required attachments, is accurate.

Signed Marcus Castain 6/13/11  
 Grantee's Authorized Representative as shown in Resolution Date





**Proposal to the  
Baldwin Hills Conservancy  
DRAFT: June 8, 2011**

**Overview**

Kenneth Hahn State Recreation Area, the Baldwin Hills Scenic Overlook, Stocker and La Brea Corridors, and the Ballona Creek have many areas with extensive infestations of invasive plants including pampas grass, Terracina spurge (*Euphorbia terracina*), castor bean (*Ricinus communis*), and many others. These weeds have significant negative effects on the local ecosystem and impact park visitors and area residents. These effects include:

- Invasive plants degrade wildlife habitat. After habitat destruction, invasive species are the second-greatest threat to endangered species.
- Invasive ornamentals such as pampas grass and fountain grass, and diseased eucalyptus increase the potential for ignition and add to fire fuel loads.
- Invasive plants impact trails and scenic landscapes, making hiking and biking difficult, and lowering the land's value for photography and wildlife viewing.
- Some invasive plants like Terracina spurge (*Euphorbia terracina*) are toxic and can cause asthma, and skin and eye irritations.
- Many invasive plants are shallow rooted and create soil erosion problems, especially on slopes.

Generation Water, in partnership with the Los Angeles and San Gabriel Rivers Watershed Council, will undertake a 2½ year effort to identify, map, and remove invasive plants and restore native vegetation to the Baldwin Hills Conservancy project area. This effort will work collaboratively with partnering stakeholders to improve and support habitat for wildlife - native insects, birds, and many other species - while improving trails, increasing recreational opportunities, and reducing the risk of wildfire.

“The California Native Plant Society (1996) considers *Carpobrotus edulis* (Iceplant), *Cortaderia jubata* and *C. selloana* (Pampas Grass), *Arundo donax* (Giant Reed Grass), and *Senecio mikanioides* (German Ivy) among the most insidious examples of invasive non-native species. These species occur in abundance in the Baldwin Hills. A variety of annual grass species also hold a position on the list of most intrusive exotic species. Each of these species or species associations requires separate considerations for eradication.”

*Biota of the Baldwin Hills: An Ecological Assessment*

Generation Water is a non-profit organization focused on developing a pipeline of diverse, well-qualified young people for the career opportunities of the green economy. Generation Water, which won the State of California’s Green Innovation Challenge in 2010, will leverage its state funding and use this project to create real world, job training opportunities for young people (some of whom will be from areas near Baldwin Hills) as they help improve the environmental quality of the area. This project will engage technical experts and local community members in volunteer efforts to further restore the area’s biodiversity and natural beauty.

This project is designed to directly achieve several of the goals of the Baldwin Hills Conservancy including the following:

- Protect and restore natural habitat

- Protect and improve urban water quality
- Protect watersheds connecting to Santa Monica Bay

In addition, this project has been designed to achieve the BHC's standard objectives:

- *Promotion of the BHC's statutory programs and purposes* – According to the BHC Master Plan, the primary purpose of the Baldwin Hills State Recreation Area is “to preserve the last open space resource in this area of Los Angeles County capable of meeting the present and future outdoor recreation needs of the public. To preserve this open space, major portions will need to be restored and revegetated. The purpose of this restoration is to repair the damage that has occurred to the vegetation and land forms resulting from the past and present uses of the area.”
- *Consistency with the Baldwin Hills Park Master Plan* – The long-term sustainability of all park resources is the first management goal in the plan. The second goal is the protection of natural lands.
- *Consistency with purposes of the funding source* – This project is also consistent with the Baldwin Hills Conservancy's Proposition 84 grant program. Indeed, the second goal of the program is protecting and restoring the natural habitat values of coastal waters and lands.
- *Support from the public* – LA County Parks has indicated strong support in the need for this project and in working with Generation Water. Further public support will be built through a proactive community building effort, which will develop a volunteer base of supporters committed to restoring the Baldwin Hills Park Lands to its natural and native beauty.
- *Location* – This project will focus on the key areas of the Conservancy including KHSRA, the Baldwin Hills Scenic Overlook, the Stocker and La Brea corridors, and Ballona Creek (East of Overland).
- *Need* – The Biota of the Baldwin Hills, as indicated in this document, indicate the extensive infestations of invasive species in the Park Lands. Our visits and discussions with staff at KHSRA, BHSO, and the Conservancy have all corroborated this point.
- *Greater than local interest* – Habitat restoration is a regional issue and the Park Lands are a potential high profile example that would be visible to millions of people who live in the neighboring communities.
- *Demonstrated expertise in the proposed program area* – Generation Water, the Los Angeles and San Gabriel Rivers Watershed Council, and Mujeres de la Tierra all have expertise in the requisite skills including GIS mapping, weed control, revegetation, youth job training in diverse communities, and community building.

## Priority Issues

Generation Water is offering to leverage a significant source of matching funding. Our approach of combining GIS mapping, analysis, and field labor is highly *innovative* and we are *ready to begin immediately* upon approval from the BHC Board and completion of a project agreement. It is our intent to bring our program together with input and guidance from the many accomplished groups and individuals in a *cooperative* manner across the Park Lands.

## Scope of Work

The project will consist of several components:

1. **Technical Guidance and Planning** – We will convene a technical advisory group who will review previous biological analyses and our invasive plant survey findings. They will then set control priorities for the project team. This group will also be involved in providing input and review for a management manual that will prove useful for volunteer activities in the years to come. Drew Ready, Chair of the Los Angeles Weed Management Area and Sustainable Landscape Program Manager of the Los Angeles and San Gabriel Rivers Watershed Council, will facilitate this effort.

Prospective members for the technical advisory group will include stakeholders from the relevant agencies and environmental community. Invited agencies and individuals will include the following:

- David McNeil, Baldwin Hills Conservancy, Executive Director (or appropriate staff person)
- Suzanne Goode, California State Parks, Ecologist
- Margot Griswold, New Fields and the Baldwin Hills Greenhouse Program
- LA County Parks and Recreation, Biologist/Arborist
- Linda Eremita, TreePeople, Arborist
- Christie Brigham, Santa Monica Mountains National Recreation Area, Ecologist
- Jason Casanova, Watershed Council, Geographer, Cal-IPC board member
- Dan Cooper, Cooper Biological, Biologist
- Eric Brooks, California Native Plant Society
- Eleanor Osgood, Los Angeles Audubon Society

“Protecting a small portion of the biological heritage of Los Angeles is a valuable undertaking. Serious efforts to remove the most egregious invasive species and halt additional access into those portions of habitat that have remained inaccessible must be made a priority.”  
*Biota of the Baldwin Hills: An Ecological Assessment*

2. **On-the-Job Work Experience** – The bulk of the project work will be conducted by three cohorts of young people. The first cohort will consist of 10 young people and will be subsidized by Generation Water’s Green Innovation Challenge. The subsequent cohorts will be 5 people each. Each cohort will work approximately 10 months on the project for a total of 30 months. They will conduct GPS surveys, GIS mapping, manual weed control, native plant propagation and revegetation, and will provide support for community volunteer work days. Generation Water team members will participate in a 3-day California Invasive Plant Council training which covers biology and plant identification, mapping, and control. We will also work with area partners to provide a workshop on the ecology and natural history of the ecosystems of the Greater Los Angeles watershed. In addition to training our team members, we will open this up to landscape and conservation professionals in the region. In addition to invasive plant training, Generation Water team members will also receive training on water use efficiency, irrigation retrofits, horticulture and gardening, and stormwater infiltration.

Generation Water crews will report on-site four to five days a week (some weeks, the fifth day may be dedicated to indoor work or training off-site) to conduct field activities. Initially, the team will work out of the maintenance area at KHSRA unless a more suitable location arises and the

County wishes to relocate Generation Water. This site will house a greenhouse, lathe/shade house, and office shed for the team to meet and store tools and materials.

Efforts will also be undertaken to emphasize the damaging consequences of off-trail intrusions into native vegetation. Such efforts will work to enhance the community's awareness of the area's dwindling natural resources and wildlife habitat. This will be an essential step towards increasing the local appreciation for, and conservation of these natural areas, a goal outlined in the *Biota of the Baldwin Hills*.

- 3. Community Building** – Mujeres de la Tierra will organize community building efforts focused on building a base of regular volunteers. Volunteer efforts will include "Weed Bash" work days, restoration and tree plantings, trail hikes, talks, and habitat walks. Up to three "rainy season" planting day celebrations each year will take place to plant appropriate native plants. These "planting days" will be hard work but will also be celebratory and may include music, poetry or other therapeutic group activities. Area homeowner associations, block clubs, community groups, park users, businesses and young people from neighboring schools, especially those schools requiring community service, will be encouraged to participate.

The purpose of the community building effort is to build a sustained and engaged volunteer program to continue efforts to restore the Baldwin Hills Park Lands. Mujeres de la Tierra will develop and manage mailing lists, social networks and online communications and will attend local community meetings and events to identify and recruit volunteers. Quarterly volunteer events will be held to enable local community members to engage directly in the restoration of the Park Lands. Generation Water will provide volunteer instruction, logistics, and support for each volunteer activity.

## Project Workplan and Timeline

Phase of Work	Activities	Timeline/Frequency
<b>1. Grant Administration</b>	Secure grant from Baldwin Hills Conservancy	August 1, 2011
	Sign grant agreement	August 1, 2011
<b>2. Project Set-Up</b>	Recruit field supervisor	August 15, 2011
	Establish a project office/shed at KHSRA	September 15, 2011
<b>2. Technical Advisory Group</b>	Convene a technical advisory group to set priorities for invasive species management and define a re-vegetation plant palette	Meet quarterly over the course of the project (possibly more frequently at project start)
<b>3. On-Board Team Members</b>	Recruit team members (several may apply from Generation Water's existing crew) for 3 different cohorts (first cohort of 9, subsequent cohorts of 5)	New cohorts to start on September 2011, July 2012, and May 2013
	Conduct training on Introduction to Invasive Plant Identification and Control and Revegetation for each cohort (3 days total)	<ul style="list-style-type: none"> <li>September 2011</li> <li>July 2012</li> <li>May 2013</li> </ul>
<b>4. Surveying and Mapping</b>	Map the "Top 20" invasive species using GPS/GIS for the following areas: <ul style="list-style-type: none"> <li>Ballona Creek: Both sides of Ballona Creek (from Overland Ave to where the Creek emerges from underground just north of Washington Blvd.)</li> <li>Ken Hahn State Park</li> <li>Baldwin Hills Scenic Overlook</li> <li>Stocker and La Brea corridors</li> </ul>	Will start October 1, 2011 for most mapping and complete by January 1, 2012; occasional additional mapping as seasons change, as plants emerge from dormancy, and as new species of concern emerge (based on recommendations from technical advisory group)
	<ul style="list-style-type: none"> <li>Upload GPS coordinates and create GIS maps of all invasive species that can be</li> </ul>	February 1, 2012

	viewed via the Web	
<b>5. Control</b>	<ul style="list-style-type: none"> <li>Manually remove high priority invasive species</li> <li>Safely transport weeds to control site next to greenhouse for disposal</li> <li>Solarize and/or compost weeds on-site</li> <li>Shred plant stalks and compost</li> <li>Update invasive species maps</li> <li>Dispose of unusable plant material</li> </ul>	Ongoing throughout project
<b>6. Native Shrubs and Tree Planting</b>	Set-up a greenhouse to propagate native shrubs and trees	October 15, 2011
	Plant native vegetation to replace invasive plants	Ongoing throughout project
	Provide ongoing weeding and water to establish the new plants for a period of one year	Ongoing throughout project
<b>7. Community Building</b>	<p>Develop an online community and regular electronic communications. This communication will disseminate messaging about the Baldwin Hills Park Lands, native landscaping, and volunteer activities. Distribution channels will include Facebook, Twitter, a quarterly e-mail newsletter and online activity calendar, and monthly updates</p>	<p>Launch Facebook/Twitter: Mid-September 2011</p> <p>E Newsletter: November 2011, March 2012, June 2012, September 2012, December 2012</p> <p>Distribution channels: November 2011</p> <p>Database: November 2011-ongoing</p> <p>Ongoing, particularly heavy in the first year of the project</p>
	<p>Recruit volunteers from the following sources:</p> <ol style="list-style-type: none"> <li>Local schools for community service</li> </ol>	Ongoing, particularly heavy in the first year of the project

	<p>opportunities</p> <ol style="list-style-type: none"> <li>2. Local churches</li> <li>3. Park-users, organized sports groups, and exercise clubs</li> <li>4. Social groups including fraternities and sororities, Jack 'n Jill, Girl Scouts, Boy Scouts, and Tots 'n Teens, and youth groups</li> <li>5. Local community events and farmers markets</li> <li>6. Homeowner Associations, Neighborhood Block Clubs and Neighborhood Councils</li> <li>7. Service/Volunteer Organizations</li> <li>8. Non Profits and Community Based Organizations</li> </ol>	
<b>8. Volunteer Events</b>	<p>Coordinate quarterly volunteer events for community members to learn about invasive plants, habitat restoration and native landscaping and take ownership in the long-term success of the re-vegetation projects</p> <ol style="list-style-type: none"> <li>1. Develop quarterly volunteer events focused on weed removal and revegetation</li> <li>2. Organize volunteer appreciation picnic (once a year)</li> <li>3. Identify and cultivate appropriate corporate sponsors for volunteer days</li> </ol>	<p>Volunteer event each quarter starting in October 2011 (10 over the course of the project)</p> <p>Volunteer appreciation picnic (after volunteer day) each June</p>
<b>8. Project Completion</b>	<ul style="list-style-type: none"> <li>• After 2 ½ years, conclude project unless there is funding and interest to continue.</li> <li>• Transition maintenance and responsibility for greenhouse to LA County Parks and Recreation staff</li> <li>• Develop summary report of</li> </ul>	February 2014

	species management in the Baldwin Hills Conservancy area <ul style="list-style-type: none"> <li>• Transition or end project activities</li> </ul>	
--	--	--

### **Background / Related Experience**

Generation Water is a non-profit workforce development program whose mission is to build a pipeline of diverse, well-qualified young people for the career opportunities of the green economy. Generation Water employs and trains young people and encourages them to pursue career pathways related to water and the environment. Generation Water recruits high school graduates as well as recent college graduates with degrees in horticulture, landscape design, environmental science, and related fields. Young people will work on several different types of projects to provide them with exposure to irrigation, GIS work, landscape design and maintenance, construction, and water quality monitoring. The goal is to provide young people with knowledge and experience with end-user water management to pursue a career related to water and the environment and become excellent stewards of our vital natural resources.

Generation Water offers both classroom training and paid on the job work experience.

Projects for 2011-2012 include:

- *Irrigation surveys of schools and city parks* – Southeast Los Angeles and San Gabriel Valley
- *Sprinkler system repair and installation of weather based irrigation control* – San Gabriel Valley
- *Installation of residential raingardens* – San Fernando Valley
- *Water quality monitoring of rivers and waterways* – Various locations

Generation Water will assume overall responsibility for this initiative. This includes ongoing reporting, financial administration, and hiring of team members and a field supervisor. CEO Marcus Castain will act as the program manager.

Generation Water is partnering with the Los Angeles and San Gabriel Rivers Watershed Council on this project. Setting strategies for management/restoration programs requires accurate information on the impacts of invasive plants, which habitats they invade, and their potential to spread further. Our partners at the Los Angeles and San Gabriel Rivers Watershed Council created the WeedWatch Program in the fall of 2005 as a springboard for developing a centralized invasive plant management system in the Los Angeles Region.

The Program has since received grants from the California Department of Food and Agriculture, the State Water Resources Control Board (Prop 50), and the Los Angeles County Weed Management Area to develop a baseline of datasets for a management system that will help facilitate early detection of infestation and mobilize control eradication efforts, provide tracking of treatment methods, allow spatial analysis of dispersion dynamics, and facilitation of restoration efforts. They've also designed and implemented an outreach campaign that helps support land managers and educates residents on local invasive plant issues.



It is our intent to build upon the Watershed Council's extensive maps of invasive plant infestations. The Watershed Council has been working with the California Invasive Plant Council, the Los Angeles County Weed Management Area (LAWMA), and other regional WMA's on invasive plant mapping issues (e.g. standards, data sharing, methodology, etc). The Council has engaged in two California Department of Food and Agriculture-funded mapping initiatives. The first effort focused on collecting a comprehensive suite of existing invasive plant datasets from other agencies, organizations, and residents for the Los Angeles Basin. While this information has been collected and compiled into one central database, they have an ongoing field mapping program to collect information within select pilot areas where no data is currently available. Field work in these select areas target approximately seven common highly invasive species within our region (including such plants as Arundo, tree of heaven, yellow star thistle, castor bean, pampas grass, periwinkle, and palms).

The Watershed Council's second initiative included compiling all existing data for Arundo within the Southern California Wetlands Recovery Project territory (including the coastal watersheds of Los Angeles, Orange, Riverside, San Bernardino, San Diego, Santa Barbara, and Ventura counties). This effort is in partnership with the Santa Margarita and San Luis Rey Watersheds WMA.

The Watershed Council will provide project management and GIS technical expertise.

**Drew Ready, Project Manager** -- Drew is the Sustainable Landscape Program Manager for the Los Angeles and San Gabriel Watershed Council. Drew coordinates sustainable landscape advocacy, outreach, and education efforts. He is responsible for organizing an annual series of Sustainable Landscape Design and Maintenance Seminars for landscape architects and designers. Among his other accomplishments at the Watershed Council, he created the Plant Profiler, an online database and website that contains photos and information about native plant ecotypes for landscaping and restoration. Drew has also developed and distributed a series of education materials, including a Fire Safe Landscape Calendar, that are used to inspire action from the public on the issue of defensible space and weed management. These materials can be found at the WeedWatch.org website.

Prior to joining the Watershed Council, Drew worked as project manager for the Return of the Natives Restoration Project, the education and outreach arm of the Watershed Institute of California State University Monterey Bay. He managed a large-scale native plant nursery and coordinated regional watershed symposia and K-College teacher training events. Along with planning and implementing riparian cleanup and habitat restoration projects with under-represented communities in the city of Salinas, he was instrumental in organizing a multi-year series of community-based habitat restoration events with the Fort Ord Public Lands Bureau of Land Management.

**Jason "Cas" Casanova, GIS Subject Matter Expert** -- Jason oversees the Watershed Council's Geographic Information Systems (GIS) database, GPS services/field data collection, and map production requests in support of the Council's programs and projects. He has more than 12 years of cartographic and natural resources expertise. Jason's duties include project management, GIS database design, analysis, and cartography. Additionally, he handles a variety of the Council's publishing and design tasks and oversees the Council's website and Information Technology. Jason currently directs the Technical Services group, a unit within the Council that

provides GIS, cartography, project plan reviews, website and application development, and graphic design support to outside stakeholder groups for watershed-related planning and education efforts. He also manages a variety of invasive plant mapping projects under the Council's WeedWatch program. This program encapsulates the Council's ongoing monitoring and outreach work as well as tracking other local, regional, and statewide efforts focused on the spread, control, and education regarding invasive plants.

Jason has a background in physical geography with an emphasis in cartography and visualization. He received his B.A. in Geography at the University of Illinois at Urbana-Champaign in 1999. Previous to working at the Council, he was a Research Associate at the Geographic Modeling Systems Lab where he was involved in various GIS related projects tied to quality assurance/quality control measures, historic aerial photo restoration, urban growth series mapping, watershed management, and 3D hydrologic modeling. He currently serves on the California Invasive Plant Council's Board of Directors.

## Attachment 1: Sample GIS Invasive Plant Infestation Map

The methodology that will be used for mapping is straightforward and has been developed over the past 10 years by project staff in implementing landscape level mapping of invasive non-native plants. High-resolution (1ft) aerial photography is loaded on tablet PCs (rugged outdoor units). The tablets are equipped with ESRI's field mapping software (ArcPad 10) and a mounted GPS receiver that enables the mapper to identify his/her position on the aerial imagery. Using their position on screen and viewing the weed population on the ground, field mappers use this contextual information to derive and delineate the population by drawing (digitizing) directly on the tablet screen using the tablet pen (*Fig 1*). This spatial representation of each weed population is typically captured using an area (polygon) that then allows for specific calculation of acreage, overlaying of other spatial information (such as parcels, habitat, etc.), and other spatial analysis when it is brought back to the office and imported into the GIS database.

**Figure 1 and 2. On-screen digitizing of weed populations using GPS-based Tablet PCs.**



This mapping method is accurate and fast, making it ideal for a project of this size. The methodology also allows for populations to be identified from vantage points where areas may be inaccessible due to terrain, vegetation (e.g. poison oak), private property, etc. The dataset results are high resolution, which is needed by land managers, planners, regulators and other agencies and groups. Datasets generated using this mapping method have been used in the implementation (i.e. budget development, plan restoration, contact property owners, permitting, navigation, and monitoring) of successful control projects in Los Angeles, Orange, and San Diego Counties. After the baseline mapping is completed, the data is fed back to the tablet PCs so crews can navigate back to populations for control and monitoring follow-up. Point locations with x,y coordinates (centroids of each population) can be easily generated for treatment crews using recreational GPS units that do not have the ability to display polygon data (i.e. Garmins). Alternatively, the data can be fed to web-based mapping platforms (Google Earth) and mobile applications (ex: ESRI's free app for iPhone) as well, giving those land managers and field crews without GPS units access to the information.

## Attachment 2: Sample Outreach Materials

To date, WeedWatch initiatives and partnerships have created and distributed:

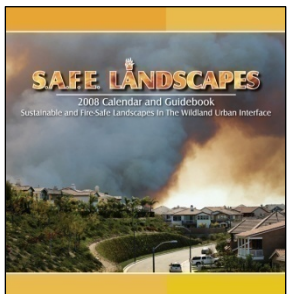


50,000+ **WeedWatch Wallet Cards**. Based on the Monterey Bay Aquarium's Seafood Watch Card, the wallet-sized WeedWatch card is designed as a homeowner's reference of "good" and "bad" plants that can be used while shopping at nurseries. A portable supplement to Cal-IPC's *Don't Plant a Pest* Brochure (see below).



5,000 **Terrible Ten Invasive Plants Posters**. An 18"x24" poster that highlights ten prominent non-native plants invading wildlands of Southern California.

Through partnerships with University of California Cooperative Extension, National Parks Service, Mission RCD, the California Invasive Plant Council, the Los Angeles County Weed Management Area (WMA) and Palos Verdes Peninsula Land Conservancy, the Program has also created and/or distributed:



37,500 **Fire-Safe Landscape (SaFE) Calendars** to residents in the wildland-urban interface of Los Angeles County. The calendars provide guidelines for creating and maintaining a fire-safe, environmentally-friendly landscape that minimizes the use and spread of invasives.

5,000 **Terracina Spurge Outreach Brochures** to residents of the Santa Monica Mountains. A newly established non-native invasive plant, this toxic spurge has become a nuisance in the coastal areas of the Santa Monica Mountains south to the Palos Verdes Peninsula.

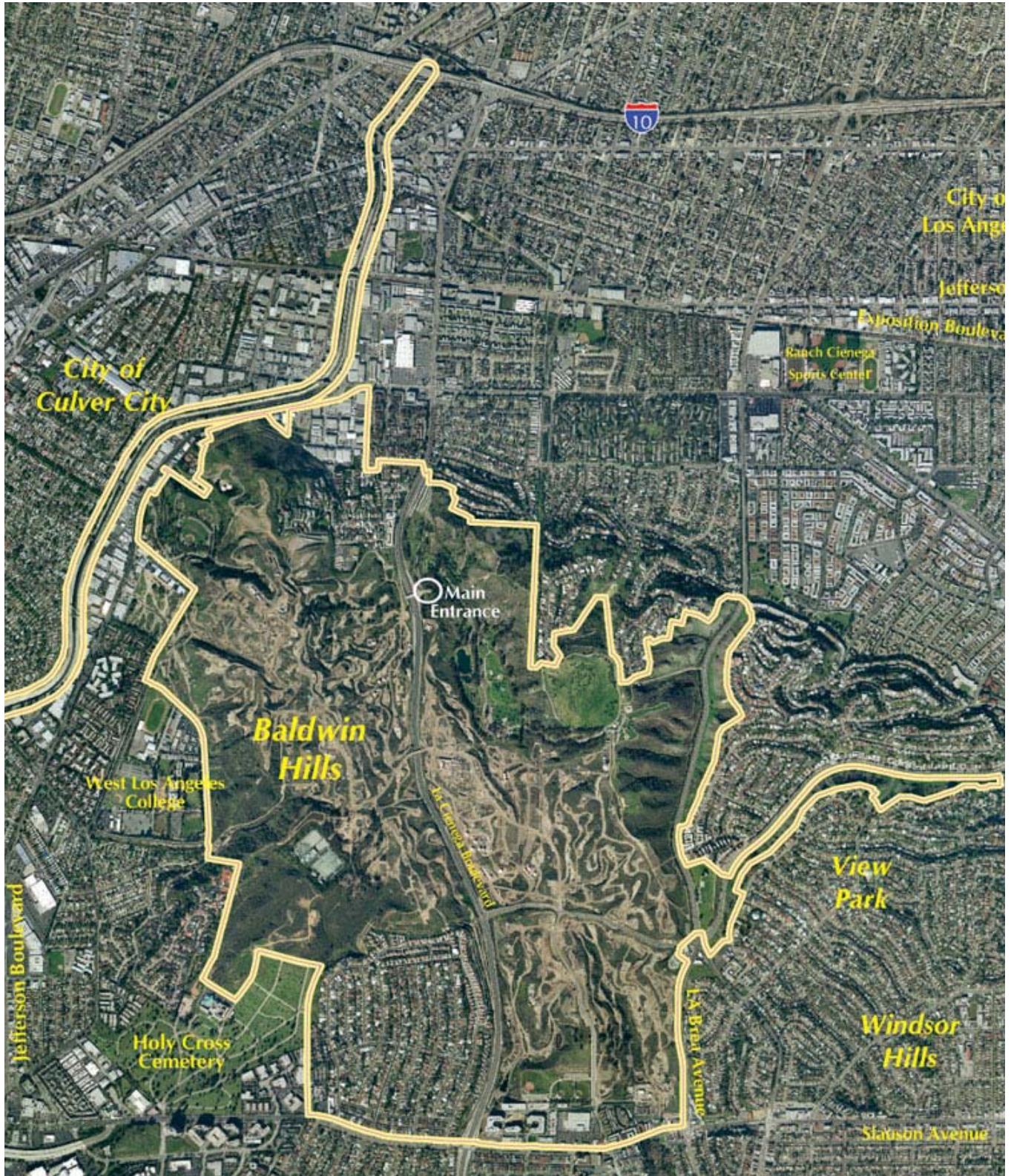


10,000 **Cal-IPC's "Don't Plant a Pest" Brochures** distributed throughout Southern California's coastal watersheds (Santa Barbara to San Diego). DPP is a resource of common invasive non-native plants that are sold at nurseries. DPP also provides recommendations of safe alternatives.

WeedWatch provides supplementary resources to all interested stakeholders through the Program's website ([www.weedwatch.org](http://www.weedwatch.org)). All existing GIS data is freely available for download as well as digital versions of all WeedWatch outreach material mentioned above. The Program also created an online Invasive Plant Guide for the primary purpose of educating landscape professionals and the general public regarding the cultivation, selection, use and management of invasive plants in our local landscape. Its intent is to help groups make decisions on when and where not to use invasive plants.



### Attachment 3: Map of Service Area





## Attachment 4: Project Site Plan

Generation Water proposes to set-up a project worksite near the new maintenance yard at KHSRA. Our team typically would be on-site between 6am and 4pm Monday through Friday and occasional Saturdays for the quarterly volunteer activities. The team size will be 10 for the first year and then will downsize to 5 for the final 18 months. Except for the moving of the electrical service, Generation Water will take responsibility for assembling the project site.

The work site would consist of three structures:

- 1) An office shed (approximately 20 feet by 20 feet) for the team to meet, clock-in, store personal gear, and have a place to sit-down. This will either be a wooden structure we will build (and which can be disassembled and moved, if necessary) or a storage container.
- 2) A greenhouse (approximately 26 feet by 50 feet). This will probably be a metal frame with plastic lining to insulate plants and retain humidity.
- 3) A shadehouse (approximately 26 feet by 50 feet). This will consist of 4x4 pillars which we would dig into the ground and cover with shade netting and surround with a low chainlink fence to keep small animals out.

Following are the site requirements:

- Access to an electrical service/tie-in (probably the maintenance sheds)
- A water source (probably tapping into the hose bib near the front of the gate) to provide irrigation for the greenhouse and shade house
- A place to park our work truck and a small 2-person cart
- Parking for the crew (note: typically, some of our staff carpool)
- Access to the public restrooms for staff
- On-site solarizing of seeds, chipping, and composting of weeds (probably just behind the greenhouse area)



	Staffing	Hours/ Month	Hourly Rate	Cost per Month	Cost per Project	Less Matching	BHC Request	Notes
<b>Staffing</b>								
Project Manager	1	32	\$ 65	\$ 2,080	\$ 62,400	\$ -	\$ 62,400	1 day/week for project duration
GIS Subject Matter Expert	1	20	\$ 70	\$ 1,400	\$ 16,800	\$ -	\$ 16,800	5 hours/week for first year
GIS Field Training Lead	1	16	\$ 30	\$ 480	\$ 3,840	\$ -	\$ 3,840	16 hours/mnth for 8 months
CEO/Program Manager	1	8	\$ 75	\$ 600	\$ 18,000	\$ 9,000	\$ 9,000	Part-time CEO for project duration
Crew Member - Year 1	7	136	\$ 12	\$ 11,424	\$ 137,088	\$ 137,088	\$ -	9 person team for first 10 months, 5 person thereafter
Crew Lead - Year 1	2	136	\$ 16	\$ 4,352	\$ 52,224	\$ 52,224	\$ -	1 crew lead
Crew Supervisor - Year 1	1	136	\$ 25	\$ 3,400	\$ 40,800	\$ 40,800	\$ -	1 supervisor
Field Manager - Year 1	1	40	\$ 35	\$ 1,400	\$ 16,800	\$ 16,800	\$ -	1 part-time field manager
Crew Member - Year 2	3	136	\$ 12	\$ 4,896	\$ 88,128	\$ -	\$ 88,128	3 crew members
Crew Lead - Year 2	1	136	\$ 16	\$ 2,176	\$ 39,168	\$ -	\$ 39,168	1 crew lead
Crew Supervisor - Year 2	1	112	\$ 25	\$ 2,800	\$ 50,400	\$ -	\$ 50,400	1 supervisor
Field Manager - Year 2	1	40	\$ 35	\$ 1,400	\$ 25,200	\$ -	\$ 25,200	1 part-time field manager
<b>Subtotal: Staffing</b>					<b>\$ 550,848</b>	<b>\$ 255,912</b>	<b>\$ 294,936</b>	
	No. Units		Cost per Unit		Cost per Project	Matching Funds	BHC Request	
<b>Plant Propagation Materials</b>								
Office shed/meeting space					\$ 3,000	\$ -	\$ 3,000	20' x 20' movable shed for office space and equipment storage
Greenhouse Materials					\$ 2,000	\$ -	\$ 2,000	Framing, plastic, gravel to build a greenhouse
Lathe House Materials					\$ 1,500	\$ -	\$ 1,500	Shaded outdoor, enclosed area for outdoor
Fencing					\$ 1,000	\$ -	\$ 1,000	Chainlink fence to protect site
Small plants					\$ 2,500	\$ -	\$ 2,500	
Pots and seedtrays					\$ 1,000	\$ -	\$ 1,000	
Soil and seed mix					\$ 800	\$ -	\$ 800	
Misc. propagation materials					\$ 700	\$ -	\$ 700	
Protected potting table					\$ 500	\$ -	\$ 500	
<b>Subtotal: Plant Propagation</b>					<b>\$ 13,000</b>	<b>\$ -</b>	<b>\$ 13,000</b>	
<b>Equipment</b>								
Tablet PCs for GIS mapping	2		\$4,575		\$ 9,150	\$ -	\$ 9,150	2 DRS X10gx Rugged Tablet PCs
Crew tools for manual control					\$ 2,000	\$ -	\$ 2,000	
Wheelbarrows and carts					\$ 300	\$ -	\$ 300	
<b>Subtotal: Equipment</b>					<b>\$ 11,450</b>	<b>\$ -</b>	<b>\$ 11,450</b>	
<b>Technical Advisory</b>								
Printed and online materials development					\$ 1,500	\$ -	\$ 1,500	
Printing of volunteer and visitor handouts					\$ 1,500	\$ -	\$ 1,500	
Weed management printed materials						\$ 3,000	\$ -	In-kind materials from California Invasive Plants Council
<b>Subtotal: Technical Advisory</b>					<b>\$ 3,000</b>	<b>\$ 3,000</b>	<b>\$ 3,000</b>	
<b>Community Outreach</b>								
Community Building	413		\$ 50		\$ 20,650	\$ -	\$ 20,650	Costs to Mujeres de la Tierra
Online social networking	467		\$ 20		\$ 9,340	\$ -	\$ 9,340	Costs to Mujeres de la Tierra
Volunteer event expenses	10		\$ 200		\$ 2,000	\$ -	\$ 2,000	\$200 per volunteer event for food, materials, tools
<b>Subtotal: Community Outreach</b>					<b>\$ 31,990</b>	<b>\$ -</b>	<b>\$ 31,990</b>	
<b>Transportation</b>								
Gasoline	6000		\$ 0.42		\$ 2,500	\$ -	\$ 2,500	200 mi/month for 30 months @ \$0.42 per mile for fuel and maintenance
Pick-up truck	30		\$ 165		\$ 4,950	\$ -	\$ 4,950	Rental cost for a used pick-up truck
Golf Cart	30		\$ 100		\$ 3,000	\$ -	\$ 3,000	Rental cost for a John Deere Gator cart
<b>Subtotal: Transportation</b>					<b>\$ 10,450</b>	<b>\$ -</b>	<b>\$ 10,450</b>	
<b>Project Administration</b>								
			9.25%		\$ 33,746	\$ -	\$ 33,746	9.25% project administration fee
				<b>Total</b>	<b>\$ 654,484</b>	<b>\$ 258,912</b>	<b>\$ 398,572</b>	



Board Resolution 1

**RESOLUTION OF THE GENERATION WATER BOARD OF DIRECTORS  
APPROVING THE APPLICATION FOR GRANT FUNDS FROM THE BALDWIN HILLS  
CONSERVANCY FOR PROPOSITION 84 FUNDING FOR the *Invasive Species  
Management program.***

WHEREAS, the Safe Drinking Water, Water Quality and Supply, Flood Control, River and Coastal Protection Bond Act of 2006, was adopted by California voters in the general election on November 7, 2006, which among other uses, provides funds to public agencies and nonprofit organizations in the State for the purpose of preventing contamination and degradation of coastal waters and watersheds, protecting and restoring the natural habitat values of coastal waters and lands, promoting access to and enjoyment of the coastal resources of the state, and

WHEREAS, the Baldwin Hills Conservancy has set forth the necessary procedures governing application for grant funds under the Proposition, and

WHEREAS, the Conservancy's procedures require **Generation Water** to certify, by resolution, the approval of the application before submission of said application(s) to the Conservancy; and

WHEREAS, said application contains assurances that **Generation Water** must comply with; and

WHEREAS, **Generation Water** will enter into an Agreement with the Conservancy to provide funds for acquisition and development projects.

NOW, THEREFORE, BE IT RESOLVED THAT THE **Generation Water** Board of Directors  
HEREBY:

1. Approves the filing of an application with the Baldwin Hills Conservancy for Proposition 40 Funds for the above project; and
2. Certifies that **Generation Water** understands the assurances and certification in the application form; and
3. Certifies that **Generation Water** has, or will have, sufficient funds to operate and maintain the project in perpetuity; or has the right to assign maintenance to another agency; and
4. Appoints **Marcus Castain** or designee, to conduct all negotiations, and to execute and submit all documents including, but not limited to, applications, agreements, amendments, payment requests and so forth, which may be necessary for the completion of the aforementioned project.

Passed, approved and adopted this 23<sup>rd</sup> day of May 2011

  
ATTEST: Marcus Castain  
CEO



INTERNAL REVENUE SERVICE  
P. O. BOX 2508  
CINCINNATI, OH 45201

DEPARTMENT OF THE TREASURY

Date:

JUN 25 2008

THE LOS ANGELES INFRASTRUCTURE  
ACADEMY  
200 N SPRING ST 22ND FLR  
LOS ANGELES, CA 90012-4801

Employer Identification Number:  
26-0746719

DLN:  
17053136013038

Contact Person:  
ZENIA LUK ID# 31522

Contact Telephone Number:  
(877) 829-5500

Accounting Period Ending:  
June 30

Public Charity Status:  
170(b)(1)(A)(vi)

Form 990 Required:  
Yes

Effective Date of Exemption:  
June 20, 2007

Contribution Deductibility:  
Yes

Addendum Applies:  
No

Dear Applicant:

We are pleased to inform you that upon review of your application for tax exempt status we have determined that you are exempt from Federal income tax under section 501(c)(3) of the Internal Revenue Code. Contributions to you are deductible under section 170 of the Code. You are also qualified to receive tax deductible bequests, devises, transfers or gifts under section 2055, 2106 or 2522 of the Code. Because this letter could help resolve any questions regarding your exempt status, you should keep it in your permanent records.

Organizations exempt under section 501(c)(3) of the Code are further classified as either public charities or private foundations. We determined that you are a public charity under the Code section(s) listed in the heading of this letter.

Please see enclosed Publication 4221-PC, Compliance Guide for 501(c)(3) Public Charities, for some helpful information about your responsibilities as an exempt organization.

Letter 947 (DO/CG)

THE LOS ANGELES INFRASTRUCTURE

We have sent a copy of this letter to your representative as indicated in your power of attorney.

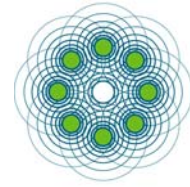
Sincerely,

A handwritten signature in dark ink, appearing to read "Robert Choi". The signature is fluid and cursive, with the first name "Robert" and last name "Choi" clearly distinguishable.

Robert Choi  
Director, Exempt Organizations  
Rulings and Agreements

Enclosures: Publication 4221-PC

June 14, 2011



David McNeill  
Executive Director  
Baldwin Hills Conservancy  
5120 West Goldleaf Circle, Suite 290  
Los Angeles, CA 90056

RE: Letter of Support for the Baldwin Hills Parklands Habitat Restoration Program

Dear Mr. McNeill:

On behalf of the Los Angeles & San Gabriel Rivers Watershed Council, I am pleased to express our support for the Generation Water proposal, the *Baldwin Hills Parklands Habitat Restoration Program*. This proposal focuses on equitable and ecologically sustainable efforts to identify, map, and remove invasive plants and restore native vegetation to the Baldwin Hills Conservancy project area. We strongly support for a program as far reaching as this. We also want to share our commitment to working collaboratively with the partnering stakeholders to successfully implement these efforts in the Conservancy's jurisdiction.

The Watershed Council is the region's trusted hub for essential watershed research and analysis. With a legacy of facilitation and collaboration, the Watershed Council connects diverse perspectives to address timely watershed issues. Our Sustainable Landscape Program develops and implements landscape design and management solutions ensuring that future generations will benefit from landscapes in tune with our local climate and culture. Our Weed Watch Program brings together disparate stakeholders in the region to focus on promoting an understanding and awareness of weed prevention, control, and eradication efforts. With these two established programs and our unique set of skills, the Watershed Council is looking forward to assisting the Conservancy and Generation Water in implementing a well-informed weed management and habitat restoration program on Conservancy lands.

The goals of the *Baldwin Hills Parklands Habitat Restoration Program* are vitally important in our complex urban environment. By connecting all people with their natural and cultural heritage, this program will provide equitable access to our region's ecosystems and open space. These are important factors in promoting healthy lifestyles and a sense of place. Thank you for your consideration.

Sincerely,

Nancy L.C. Steele, D. Env.  
Executive Director

The Watershed Council's determination that a proposal is consistent with our mission and vision and is therefore worthy of our support does not imply that all individual agencies and organizations represented on the Board of Directors concur with, or have reviewed, the proposal.

## BALDWIN HILLS CONSERVANCY

5120 West Goldleaf Circle, Suite 290

Los Angeles, CA 90056

Ph: (323) 290-5270

Fx: (323) 290-5278

www.bhc.ca.gov

---

### Memorandum

**To: Governing Board**

**Fr: Grant Review Ad Hoc Committee – Allan Kingston, Chair**

**Date: June 24, 2011**

**Re: Item 5:** Consideration of a resolution authorizing a grant in an amount not to exceed \$570,000 of BHC Prop 84 funds to Culver City for streetscape and pedestrian access improvements on Jefferson Blvd adjacent to the Scenic Overlook and Ballona Creek

**Recommendation:** Approve resolution 11-06, authorizing a grant in an amount not to exceed \$570,000 of BHC Prop 84 funds to Culver City for streetscape and pedestrian access improvements on Jefferson Blvd.

**Background:** Members Allan Kingston and Joan Cardellino were convened to review BHC Prop 84 grant applications on June 15, 2011. The application submitted by the Culver City Department of Public Works was assessed using the criteria adopted by the BHC in April 2011. Strong consideration was given to Culver City's proposal addressing the increased number of visitors who park along Jefferson Blvd and walk to the entrance of the Baldwin Hills Scenic Overlook. Further support for the project was expressed due to the proposals plans to facilitate cyclists and pedestrians seeking a safer continuous route from the park to the adjacent Ballona Creek Bicycle Path and ultimately the coast.

The project application (see attachment #1) requests a 75% funding match in the amount of \$566,403 to implement Jefferson Blvd streetscape improvements to include raised street median islands, sidewalks, bike lanes, pedestrian signal with crosswalk, signage, advances stop bars, curb extensions, and street-side parking lot improvements.

The committee's assessment of the project description and narrative yielded the following top five goals of the Baldwin Hills Park Master Plan and the BHC's Strategic Plan: 1) providing for public access and entryways, 2) emphasizes connections between existing parks, trails, and urban streams, 3) increases active recreation opportunities for underserved communities, 4) protects and improves urban water quality, 5) creates or implements a comprehensive trail system.

Overall, the project will promote access to and enjoyment of the coastal resources of the State while incorporating low impact design practices that will reduce stormwater runoff into the Ballona Creek. Of equal or greater significance, the project begins to address public safety by designating areas for pedestrians and cyclists to trek off of the boulevard, or within a controlled zone recognizable by vehicular traffic. If approved, the project would be initiated this summer and build upon improvements being implemented along Jefferson Blvd by State Parks and Culver City.

Of particular note, Culver City recently applied for a \$600,000 award through a federally funded Highway Safety Improvement Program (HISP) administered by Caltrans. If granted, these federal funds would upgrade the pedestrian signal to a full traffic signal that would join Culver City's integrated traffic management system. The HISP grant would also increase the locations and linear feet of bicycle lanes accessing the Ballona Creek.

The committee prioritized the Jefferson Blvd Streetscape and Pedestrian/Bicycle Access Improvements project as a 10 on an ascending scale from one to ten.

**Jefferson Blvd Streetscape and Pedestrian/Bicycle Access Improvements**

**City of Culver City**

**PROP 84 LOCAL ASSISTANCE GRANT PROJECT REQUIREMENTS**

(For use in the determination of the priority of Conservancy grants and projects authorized under Division 22.7 of the California Public Resources Code)

**STANDARD REQUIREMENTS**

**a. Located within the BHC territory**

Site map and narrative identify project is within the Conservancy territory and boundaries as described in PRC 32553 (a).

**b. Promotion of the Conservancy's statutory programs and purposes**

*PRC 32569 (a):* Conservancy may award grants to local public agencies for the purposes of this division

*PRC 32565.5 (b):* Conservancy shall give priority to related projects that create expanded opportunities that provide recreation, aesthetic improvement, and wildlife habitat in the Baldwin Hills area.

**c. Consistency with purposes of Prop 84 statute**

*PRC 75060:* Bond funds are available for projects to promote access to and enjoyment of the coastal resources of the State; and to prevent contamination and degradation of coastal waters and watersheds

**d. Consistency with the Baldwin Hills Park Master Plan**

*Pedestrian Access and Trail Connections*, page 46: "Key public access points would allow easy connections to major public trails and access into the park."

*Park Concept Description: One Big Park*, page 51: "Visitor serving facilities are planned for the northwestern (Baldwin Hills Scenic Overlook) to provide important public access and educational opportunities and to take advantage of one of the most spectacular views in all Los Angeles of the Pacific Ocean, Santa Monica Bay, Los Angeles Basin and the surrounding mountains."

**e. Greater-than-local interest**

With nearly 3 million Californians residing in a five-mile radius of the Baldwin Hills territory (according to the 2000 census data), and over 58 million trip visits to the Los Angeles area annually by Californians alone, the land resources in the Baldwin Hills represent an extraordinarily unique value to the entire state.

**f. Demonstrated expertise in the proposed program area**

The City of Culver City Public Works Department has undertaken similar projects within its jurisdiction including street medians, traffic signals, bicycle lanes, landscaping and parking facilities.

**ADDITIONAL PRIORITIES**

**g. Leverage**

The applicant is providing the required 25% match utilizing Culver City's Capital Improvement Program Budget and in-kind services totalling \$188,801. This match would leverage Prop 84 funds within the BHC's territory and demonstrate the BHC's capacity to partner with local public agencies.

**j. Resolution of more than one issue**

This project resolves multiple issues by improving access to the Scenic Overlook and Ballona Creek; encouraging non-vehicular travel; and benefiting water quality through infiltration of runoff in medians and permeable sidewalks. The proposal also allows for integration into current and future improvements proposed for the Jefferson Blvd corridor.

**k. Readiness**

Culver City is prepared to initiate the project as early as August with construction beginning in one year. Adequate financial resources are currently at the department's disposal. The existing working relationship with California State Parks will provide the proper foundation for efficacy in project implementation.

**l. Realization of prior BHC goal**

The project enhances the existing access at the Baldwin Hills Scenic Overlook and compliments current studies being conducted for the Park to Playa Trail. Building on the popularity of the Ballona Creek and the Scenic Overlook, the proposed improvements are a natural evolution towards the community's vision of linking park resources as recommended in the Baldwin Hills Park Master Plan.

State of California — The Natural Resources Agency  
BALDWIN HILLS CONSERVANCY

*APPLICATION FOR LOCAL ASSISTANCE GRANT*

Jefferson Boulevard Streetscape and Pedestrian and Bicycle Access Improvements \$ 566,403.75

<b>PROJECT NAME</b> City of Culver City 8770 Culver Boulevard Culver City, CA 90232 helen.kerstein@culvercity.org	<b>GRANT AMOUNT</b> \$ 755,205 <b>ESTIMATED TOTAL PROJECT COST</b> (State Grant and other funds)																
<b>GRANTEE (Agency and address-including zip code and email)</b>	<table style="width: 100%;"> <tr> <td style="width: 50%;">Los Angeles</td> <td style="width: 50%;">Culver City</td> </tr> <tr> <td style="text-align: center;"><b>COUNTY</b></td> <td style="text-align: center;"><b>NEAREST CITY</b></td> </tr> <tr> <td colspan="2">8100 Jefferson Boulevard, Culver City, CA</td> </tr> <tr> <td colspan="2"><b>PROJECT ADDRESS</b></td> </tr> <tr> <td colspan="2">Jefferson Blvd and Hetzler Rd</td> </tr> <tr> <td colspan="2"><b>NEAREST CROSS STREET</b></td> </tr> <tr> <td style="text-align: center;">26</td> <td style="text-align: center;">47</td> </tr> <tr> <td style="text-align: center;"><b>SENATE DISTRICT NO.</b></td> <td style="text-align: center;"><b>ASSEMBLY DISTRICT NO.</b></td> </tr> </table>	Los Angeles	Culver City	<b>COUNTY</b>	<b>NEAREST CITY</b>	8100 Jefferson Boulevard, Culver City, CA		<b>PROJECT ADDRESS</b>		Jefferson Blvd and Hetzler Rd		<b>NEAREST CROSS STREET</b>		26	47	<b>SENATE DISTRICT NO.</b>	<b>ASSEMBLY DISTRICT NO.</b>
Los Angeles	Culver City																
<b>COUNTY</b>	<b>NEAREST CITY</b>																
8100 Jefferson Boulevard, Culver City, CA																	
<b>PROJECT ADDRESS</b>																	
Jefferson Blvd and Hetzler Rd																	
<b>NEAREST CROSS STREET</b>																	
26	47																
<b>SENATE DISTRICT NO.</b>	<b>ASSEMBLY DISTRICT NO.</b>																

Grantee's Representative Authorized in Resolution:

John Nachbar	City Manager	310-253-6000
Name (type)	Title	Phone

Person with day-day responsibility for project (if different from authorized representative):

Helen Kerstein	Management Analyst	310-253-5518
Name (type)	Title	Phone

Brief description of project:

The proposed project will improve access to the Ballona Creek and Baldwin Hills Scenic Overlook (Overlook) by constructing environmentally-sustainable improvements that are consistent with the Baldwin Hills Conservancy's Access and Linkages Study and Baldwin Hills Park Master Plan, including: raised median islands, sidewalks, bike lanes, a pedestrian signal with a crosswalk and advance stop bars, curb extensions, and parking lot improvements near the Jefferson Boulevard and Hetzler Road entrance to the Overlook.

For Dev. projects Land Tenure — Project is: <u>6.5</u> acres: <u>6.25</u> Acres owned in fee simple by Grant Applicant <u>        </u> Acres available under a <u>        </u> year lease <u>0.25</u> Acres other interest (explain)	For Acquisition projects-Projects will be <u>        </u> acres <u>        </u> Acquired in fee simple by Grant Applicant <u>        </u> Acquired in other than fee simple (explain)
---	---

The parking lot (approx. 7,500 sq. ft.) is on State Parks property. A small section of the proposed sidewalk (approx. 3,000 sq. ft.) is in the City of LA. Both entities have expressed support for the project and a willingness to provide the necessary permits.  
 I certify that the information contained in this project application form, including required attachments, is accurate.

Signed <u>Martin R. Cole</u> Grantee's Authorized Representative as shown in Resolution	Date <u>15 JUN 2011</u>
MARTIN R. COLE, ASSISTANT CITY MANAGER AND EX-OFFICIO DESIGNEE OF THE CITY MANAGER	



# JEFFERSON BOULEVARD STREETScape AND PEDESTRIAN AND BICYCLE ACCESS IMPROVEMENTS

“The creation of greenways along streets and roads leading to the park will connect Baldwin Hills Park to adjacent urban areas, connecting the park itself to the surrounding areas and providing important pedestrian and bicycle access to the park...greenway elements on these streets should include consistent street tree plantings, planted medians, landscaping, signage, and other park district identification elements.” - Baldwin Hills Park Master Plan

“Jefferson Boulevard in this area has a commercial industrial character, a wide roadway that encourages high speeds for motorists and is unfriendly to cyclists and pedestrians who may wish to enter the park from Jefferson Boulevard. Creating a more parklike character along the street through landscaping and signage will help announce this area as the entrance to the Scenic Overlook Site, as well as provide safe passage for park-goers arriving by bicycle or on foot.” – Baldwin Hills Conservancy’s Access and Linkages Study

## BRIEF DESCRIPTION

The proposed project will improve access to the Ballona Creek and Baldwin Hills Scenic Overlook (Overlook) by constructing environmentally-sustainable improvements that are consistent with the Baldwin Hills Park Master Plan and the Baldwin Hills Conservancy's Access and Linkages Study, including: raised median islands, sidewalks, bike lanes, a pedestrian signal with a crosswalk and advance stop bars, curb extensions, and parking lot improvements near the Jefferson Boulevard and Hetzler Road entrance to the Overlook.

## PROJECT SCOPE/NARRATIVE

### *BACKGROUND*

Since the opening of the Overlook in 2009, it has become a popular destination for visitors from around the region, including underserved areas. In the summer, roughly 3,500 visitors flock to the Overlook each week, appreciating its vistas, natural habitat, and active recreation opportunities. Given the high use of the Overlook as well as Ballona Creek, improvements in access and improved connectivity are greatly needed.

Currently, many visitors to the Overlook choose to park near the entrance on Jefferson Boulevard in order to access the climbing stairs, which have become a key attraction. There is limited parking on the south (Overlook) side of Jefferson Boulevard, so visitors choose to park on the north (Creek) side of the road and negotiate the four-lane major arterial, which lacks a raised median or nearby marked or signalized crossing.<sup>1</sup> There are no sidewalks on either side of the stretch of Jefferson Boulevard near the Overlook and the area is overgrown and uneven in places, so visitors also sometimes elect to walk in the roadway adjacent to the travel lanes to access the park. Furthermore, there are no existing bike facilities on Jefferson Boulevard or bicycle racks at the park entrance, so some potential cyclists may be discouraged from accessing the Overlook.

Recognizing the need to improve access to the region’s recreational resources and strong support from the local and regional community for doing so, the City of Culver City has been working closely with California State Parks, the City of Los Angeles, and other groups to develop collaborative solutions for both the near and longer-term.

---

<sup>1</sup> Note: The City requested that a signal be installed during the environmental review process for the Park, but it was never installed.

The proposed project includes several near-term improvements to address the challenges described above and to create a more comfortable way for visitors to access scarce open space, while simultaneously promoting environmental-sustainability in this important section of roadway immediately adjacent to Ballona Creek.

### *DESCRIPTION OF PROPOSED PROJECT*

The proposed project will add raised landscaped medians along a portion of Jefferson Boulevard. These medians will create a more inviting and environmentally-friendly entrance to the Overlook by including low maintenance, drought tolerant plantings, storm water infiltration to improve water quality, and a location for signage identifying the entrance to the Overlook as well as the location of parking in the State Park.

The project will also add sidewalks along Jefferson Boulevard, filling the gap that currently exists and thus greatly improving access for pedestrians. These sidewalks are proposed to be constructed from permeable concrete in order to help promote storm water infiltration in this critically important area adjacent to Ballona Creek.

A pedestrian signal and crosswalk with advance stop bars at Jefferson Boulevard and Hetzler Road are also proposed in order to provide pedestrians with a more desirable place to cross the street. Curb extensions/bulb outs will also be added to reduce the crossing distance on this wide road, thereby limiting pedestrian exposure to vehicular traffic and making pedestrians more visible at a focused crossing point.

Recognizing that cyclists are also important users of the Creek and Overlook, the project will also install bike lanes from the City boundary east of the park to approximately Duquesne Avenue to improve bicycle access to the park for all users, in addition to those who utilize the Ballona Creek Bike Path entrance at Duquesne Avenue.

Finally, the project will improve a parking lot at the base of the Overlook (on State Parks land), which will be paved with permeable asphalt to further encourage environmental sustainability. Bicycle parking is proposed to be placed on a portion of the lot to ensure that park access is facilitated for non-motorized as well as motorized users.

### *BENEFITS OF PROPOSED PROJECT*

Together, the improvements included in this proposed project will resolve multiple issues by increasing access to and enjoyment of the Overlook and Ballona Creek as well as overall connectivity to the Baldwin Hills Parklands; increasing environmental sustainability; and providing a foundation for longer term improvements to the area. The proposed improvements are strongly supported by the community and will also help achieve the vision laid out in planning documents such as the Baldwin Hills Park Master Plan and the Baldwin Hills Conservancy's Access and Linkages Study.

#### *Increasing Access and Enjoyment*

By helping to fill gaps in sidewalks and bike facilities that currently exist from the nearest Ballona Creek Bike Path access point to the Overlook, the project will help facilitate linkages from Baldwin Hills Parklands to Ballona Creek. In so doing, the project will support other related regional efforts such as Park to Playa, which aims to connect urban Los Angeles, including underserved and park-poor communities, with coastal resources such as Ballona Creek and ultimately the ocean. It will also serve to increase active recreation opportunities for underserved communities.

### *Increasing Environmental Sustainability*

The project will also have environmental benefits. It will help improve urban water quality by creating medians that assist with stormwater infiltration as well as sidewalks that are permeable. It will also encourage non-motorized travel by providing more comfortable access to the Park from Ballona Creek for bicycles and pedestrians. Furthermore, it will create a “greener” entrance to the Overlook, which will help promote the park’s message of environmental-sustainability and habitat restoration.

### *Foundation for Longer-Term Improvements*

While the project can be implemented in a short time frame, it will serve as the foundation for additional longer-term improvements to the area. These longer-term projects could include, for example, an expansion of the parking lot and the addition of a full traffic signal including pedestrian countdown signal indications at the Overlook entrance at Jefferson Boulevard and Hetzler Road, both of which have been included in pending grant applications (by State Parks and the City of Culver City respectively).

### *Support from the Community*

The community strongly supports this project. The City has received a number of formal support letters from community environmental, health, and bicycle-related community groups. California State Parks and the City of Los Angeles are also supportive of the project, and have expressed a willingness to facilitate this project through the issuance of the necessary permits. Please see the attached support letters.

### *Consistency with Vision*

The proposed project is entirely consistent with the recommendations in the Baldwin Hills Park Master Plan. The Master Plan envisions “greenway connections” along streets leading to the park that will promote pedestrian and bicycle access. It also articulates the concept of connecting the Baldwin Hills to Ballona Creek and the Beach, which this project helps to do by filling gaps in pedestrian and bicycle access from the nearest Ballona Creek access point to the Overlook.

The proposed project is also consistent with the Baldwin Hills Conservancy’s Access & Linkages Study. This Study recognizes the need for improvements along Jefferson Boulevard in order to create a friendlier and more desirable entrance, especially for cyclists and pedestrians. It also articulates specific improvements to be made along Jefferson Boulevard (part of Project Area D: Western Gateway), including: improved access to/from the Ballona Creek Trail, bike facility improvements along Jefferson, crosswalk improvements, signage, landscaping, and parking. The proposed project brings these recommended improvements to fruition.

## PROJECTED TIMELINE

- Final Engineering – January 2012 - March 2012
- Construction - June 2012 – December 2012
- Plant Establishment – Beginning December 2012

## PROJECT COST ESTIMATE

Project Costs	Unit Price	Unit of Measure	Quantity	Total
Project management and inspection		lump sum		50,000.00
Final design/engineering		lump sum		50,000.00
Traffic control		lump sum		10,000.00
Median with low maintenance landscaping and irrigation	725.00	lf	250	181,250.00
Feature to deter midblock crossings	30.00	lf	250	7,500.00
Signage				5,000.00
Sidewalks				
Clearing and grubbing	1.00	ls	25000	25,000.00
Relocate street lights	6.00	each	2500	15,000.00
Retaining curb (north side, 24" tall)	500.00	lf	40	20,000.00
4" PCC sidewalk (6' wide)**	12,600.00	sf	6	75,600.00
Pedestrian signal, crosswalk, and advance stop bars		lump sum		125,000.00
Curb extensions	10,000	each	2	20,000.00
Bike lane				25,000.00
Existing striping removal	3,400.00	sf	2.5	8,500.00
Bike lane markings	6.00	each	250	1,500.00
Bike and traffic lane painting	16,000.00	lf	0.7	11,200.00
Bike storage facilities	2,000.00	each	3	6,000.00
Plant establishment		lump sum		10,000.00
Parking lot	5.33	sf	7500	40,000.00
Contingency (10%)				68,655.00
Total				755,205.00
Match				188,801.25
Grant request				566,403.75

- 1    \*\*: Assuming 4' new sidewalk (between existing metal beam barrier to curb face) is acceptable (300LF)
- 2    City of LA permit required for work in LA City (approx. 3,000 sq. ft). State Parks right of entry required for parking lot work. Culver City understands that LA City and State Parks are prepared to provide the necessary permits (see attached support letters).

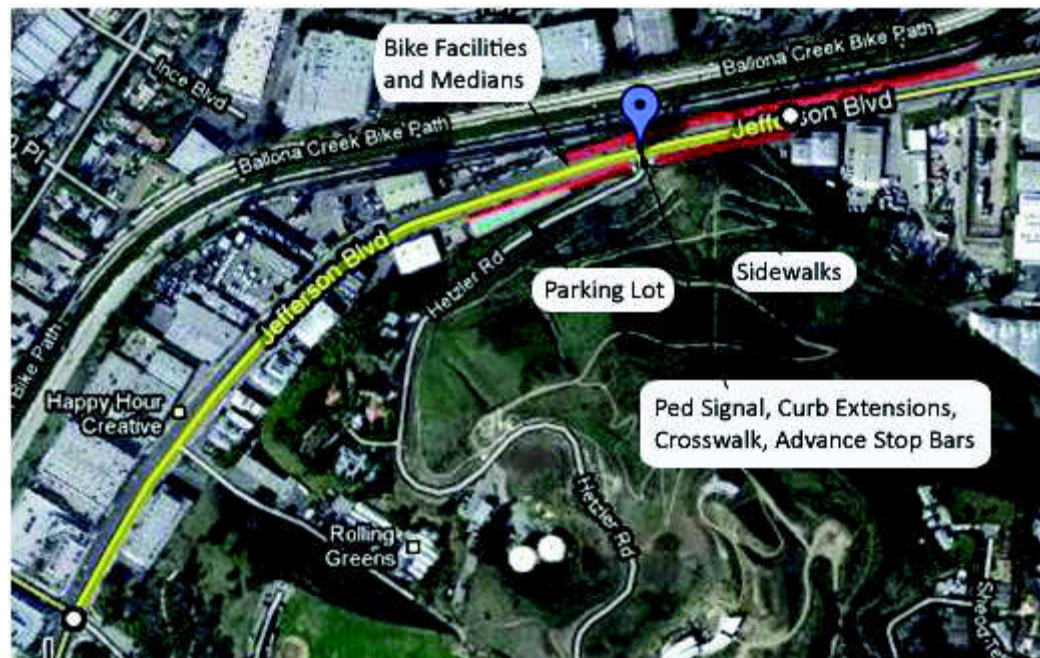
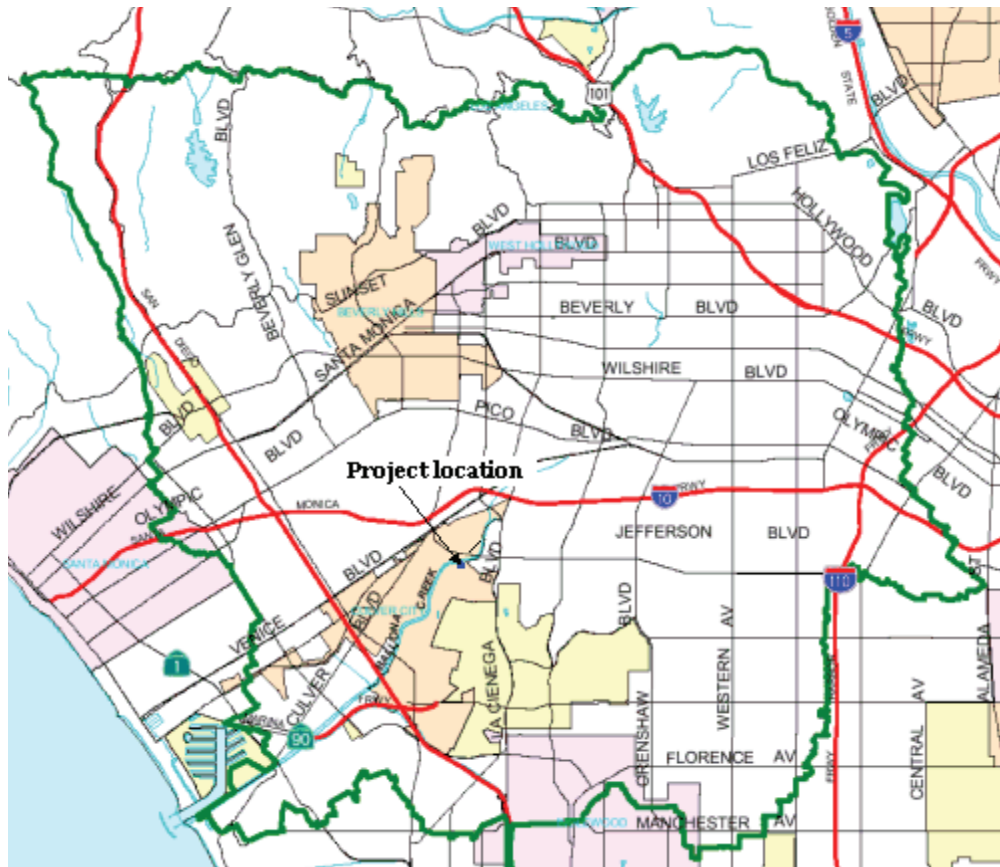
## APPLICANT BACKGROUND /RELATED EXPERIENCE

The City of Culver City has extensive experience managing similar projects. In the last year, for example, the City has completed several similar projects, including:

- Medians between Wade Street and Beethoven Street (in collaboration with the City's Redevelopment Agency)
- New traffic signal at Washington Boulevard and McLaughlin Street and modification to the traffic signal at Washington Boulevard and Berryman Avenue to not allow northbound access. New pedestrian signal at Buckingham Parkway and Sumner Way
- Bike lanes along Washington Place from Albright to Washington Blvd

The City has the financial resources to undertake this project. The City's revenues for FY 11/12 are anticipated to be over \$157 million, roughly \$80.6 million of which are expected to go to the General Fund. In the FY 11/12 Capital Improvement Program budget, \$175,000 has been specifically set aside for matching funds for bike/pedestrian related grants such as this one. Staff has indicated to the City Council that, should this grant be approved, they anticipate using the \$175,000 as well as some in-kind staff time to meet the City's match, and will seek additional appropriations, if necessary.

## MAPS OF PROJECT LOCATION (INCLUDING WATERSHED BOUNDARY)



Note: The bike facilities are proposed to extend from approximately the east City boundary to Duquesne. The medians are anticipated to run approx. 250 feet near the entrance to the Overlook. Their precise location will be determined during the final design/engineering phase.





Baldwin Hills Scenic Overlook Visitors Center



Entrance to Baldwin Hills Scenic Overlook



Example of pedestrian crossings near the Jefferson Hetzler Road intersection



Section of Jefferson Boulevard adjacent to Hetzler Road without sidewalks

## JEFFERSON BOULEVARD AT HETZLER ROAD SITE PHOTOS

City of Culver City

*Culver* CITY



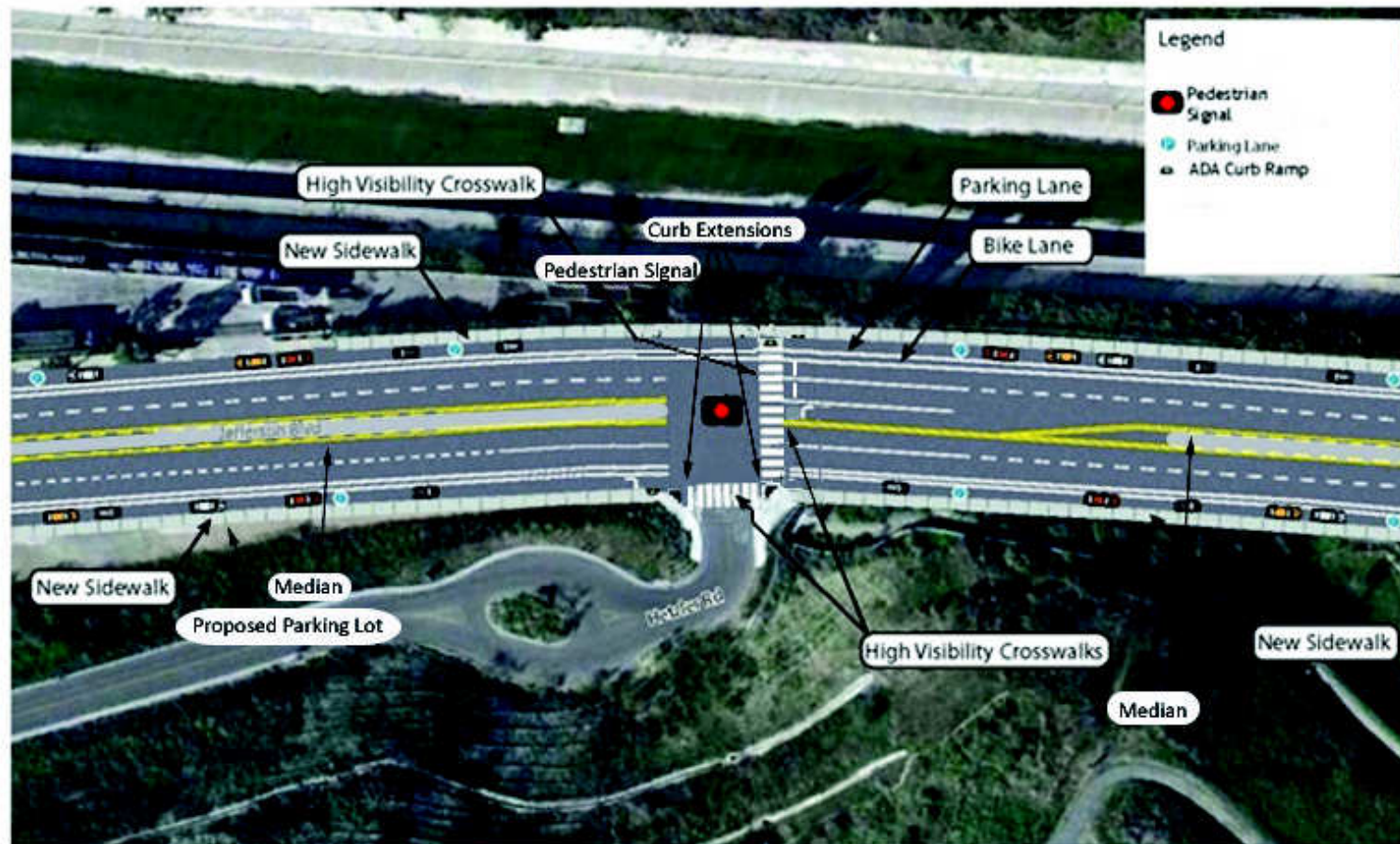


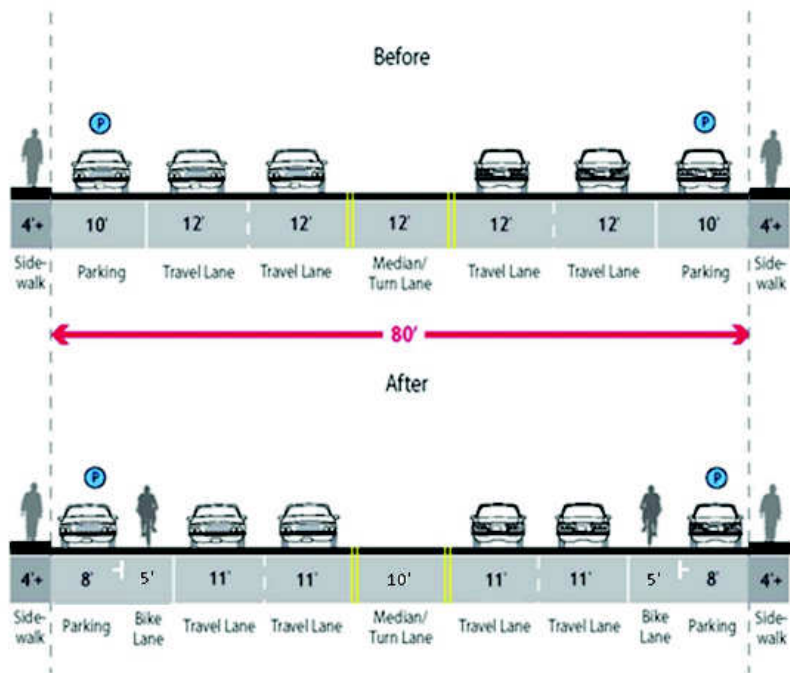
Image Source:  
© 2010 Google Earth

## JEFFERSON BOULEVARD AND HETZLER ROAD CONCEPT DESIGN

City of Culver City



*Culver* CITY



#### JEFFERSON BOULEVARD EXAMPLE CROSS-SECTION TREATMENT

City of Culver City

*Culver* CITY

## RESOLUTION

1 RESOLUTION NO. 2011-R054

2  
3 A RESOLUTION OF THE CITY COUNCIL OF THE CITY OF  
4 CULVER CITY, CALIFORNIA, APPROVING AN  
5 APPLICATION FOR GRANT FUNDS FROM THE BALDWIN  
6 HILLS CONSERVANCY FOR PROPOSITION 84 FUNDING  
7 FOR JEFFERSON BOULEVARD STREETScape AND  
8 BICYCLE AND PEDESTRIAN ACCESS IMPROVEMENTS.

9 WHEREAS, the Safe Drinking Water, Water Quality and Supply, Flood  
10 Control, River and Coastal Protection Bond Act of 2006 (Proposition 84), was adopted  
11 by California voters in the general election on November 7, 2006, which among other  
12 uses, provides funds to public agencies and nonprofit organizations in the State for the  
13 purpose of preventing contamination and degradation of coastal waters and  
14 watersheds, protecting and restoring the natural habitat values of coastal waters and  
15 lands, promoting access to and enjoyment of the coastal resources of the state; and

16 WHEREAS, the Baldwin Hills Conservancy ("BHC") has set forth the  
17 necessary procedures governing application for grant funds under Proposition 84; and

18 WHEREAS, the BHC's procedures require the City of Culver City to  
19 certify, by resolution, the approval of the application before submission of the  
20 application(s) to the BHC; and

21 WHEREAS, the application contains assurances with which the City of  
22 Culver City must comply; and

23 WHEREAS, if the application is approved by the BHC, the City of Culver  
24 City will enter into an Agreement with the BHC to provide funds for the Jefferson  
25 Boulevard streetscape and bicycle and pedestrian access improvements (the "Project").

26 NOW, THEREFORE, the City Council of the City of Culver City DOES  
27 HEREBY RESOLVE:

- 28 1. The filing of an application with the Baldwin Hills Conservancy for


1 Proposition 84 Funds for the Project is hereby approved; and

2 2. The City of Culver City hereby certifies that it understands the  
3 assurances and certification in the application form; and

4 3. The City of Culver City hereby certifies that it has, or will have,  
5 sufficient funds to operate and maintain the Project for twenty (20) years, or has  
6 the right to assign maintenance to another agency; and

7 4. The City Council hereby appoints the City Manager, or his  
8 designee, to conduct all negotiations, and to execute and submit all documents  
9 including, but not limited to, applications, agreements, amendments, payment  
10 requests and so forth, which may be necessary for the completion of the  
11 aforementioned project.

12  
13 APPROVED and ADOPTED this 13 day of JUNE 2011.

14  
15   
16 MICHEAL O'LEARY, Mayor  
17 City of Culver City, California

18 ATTEST:

19  
20   
21 MARTIN R. COLE, City Clerk

APPROVED AS TO FORM:

22  
23   
24 CAROL A. SCHWAB, City Attorney

25  
26  
27  
28  
A11-00276



P.O. Box 843, Culver City CA 90232

June 15, 2011

David McNeill, Executive Officer  
Baldwin Hills Conservancy  
5120 Goldleaf Circle, Suite 290  
Los Angeles, CA 90056

Subject: **Support Letter for the City of Culver City's  
Jefferson Boulevard Streetscape and Pedestrian and Bicycle  
Access Improvements Grant Application**

**Board of Directors**  
Jim Lamm, President  
Gerald Sallus, Vice President  
Rich Hibbs, Treasurer  
David Valdez, Secretary  
Lucy Blake-Elahi  
Sandrine Cassidy Schmitt  
Bobbi Gold  
Cathi Lamm  
Irene Reingold  
Amy Rosenstein  
Mim Shapiro  
**Advisory Council**  
Michele Bigelow  
Steven Coker  
Lori Escalera  
Bob Hadley  
Pat Hadley  
Scott Malsin  
Dino Parks  
Marina Tidwell

Dear Mr. McNeill:

On behalf of Ballona Creek Renaissance (BCR), I am expressing our strong support for the City of Culver City's Jefferson Boulevard Streetscape and Pedestrian and Bicycle Access Improvements grant application through the Baldwin Hills Conservancy's (BHC) Proposition 84 Grant Program.

BCR sees a great need for streetscape and access improvements along Jefferson Boulevard near the entrance to the Baldwin Hills Scenic Overlook State Park (BHSO) at Hetzler Road. Currently, non-motorized access to is limited. There are no bicycle facilities linking Ballona Creek to BHSO nor is there bicycle parking at the park entrance. Also, there are no sidewalks on either side of the stretch of Jefferson Boulevard near the park, so visitors also sometimes elect to walk in the roadway adjacent to the travel lanes. In addition, many visitors approach the park from the creek side of the road and cross the four-lane major arterial, which lacks a raised median or nearby marked or signalized crossing.

The proposed improvements will improve bicycle access between the creek and BHSO by installing bike lanes from around Duquesne Avenue to the Culver City boundary near the park. The project also includes bicycle parking near the park entrance. It also will improve pedestrian access and comfort by installing raised median islands, curb extensions, sidewalks, and a pedestrian signal with a crosswalk and advance stop bars. Finally, a new small parking lot near the park entrance on Jefferson will provide additional parking. Permeable materials, native plantings, and provisions for non-motorized travel options will add environmental benefit.

In conclusion, BCR strongly supports these proposed infrastructure improvements. They will greatly improve access and environmental sustainability of this critical area. We highly recommend their funding through the BHC grant program.

Sincerely,

Jim Lamm, President

**Ballona Creek Renaissance (BCR)...Connecting Creek and Community**  
A Culver City-based 501(c)(3) nonprofit organization, Federal Tax ID No. 95-4764614  
310-839-6896, [www.ballonacreek.org](http://www.ballonacreek.org)



DEPARTMENT OF PARKS AND RECREATION

Ruth G. Coleman, Director

Los Angeles Sector  
700 North Alameda Street  
Los Angeles, CA 90012

June 9, 2011

David McNeill, Executive Officer  
Baldwin Hills Conservancy  
5120 Goldleaf Circle, Suite 290  
Los Angeles, CA 90056

Subject: Support Letter for the City of Culver City's Jefferson Boulevard Streetscape and Pedestrian and Bicycle Access Improvements Grant Application

Dear Mr. McNeill:

I am writing to express my strong support for the City of Culver City's Jefferson Boulevard Streetscape and Pedestrian and Bicycle Access Improvements grant application through the Baldwin Hills Conservancy's (BHC) Proposition 84 Grant Program. There is a great need for streetscape and access improvements along Jefferson Boulevard near the entrance to the Baldwin Hills Scenic Overlook (Overlook) at Hetzler Road. Currently, non-motorized access to the Overlook is limited. There are no bicycle facilities linking Ballona Creek to the Overlook or bicycle parking at the Overlook entrance. Also, there are no sidewalks on either side of the stretch of Jefferson Boulevard near the Overlook, so visitors also sometimes elect to walk in the roadway adjacent to the travel lanes to access the park. Additionally, visitors often approach the park from the park on the north (Creek) side of the road and negotiate the four-lane major arterial, which lacks a raised median or nearby marked or signalized crossing.

The proposed improvements will improve bicycle access between the Creek and Overlook by installing bike lanes between approx. Duquesne and the City boundary near the park as well as bicycle parking near the park entrance. It will also improve pedestrian access and comfort by installing raised median islands, curb extensions, sidewalks, a pedestrian signal with a crosswalk and advance stop bars. Finally, a new small parking lot near the park entrance on Jefferson will provide additional parking options for visitors on the park side of Jefferson Boulevard. The proposed improvements are intended to be environmentally-friendly by using permeable materials, native plantings, and by supporting non-motorized travel options.

California State Parks strongly supports these infrastructure improvements to improve the access to and the environmental sustainability of this critical area adjacent between the Overlook and Ballona Creek and urges their funding through the BHC's grant program. Further, California State Parks recently completed an environmental review for initial proposed improvement to the Jefferson parking area and is prepared to authorize Culver City access, via a Right of Entry permit, for these improvements

Sincerely,

Sean Woods  
Los Angeles Sector Superintendent  
California State Parks





**JONATHAN E. FIELDING, M.D., M.P.H.**  
Director and Health Officer

**JONATHAN E. FREEDMAN**  
Chief Deputy Director

**Policies for Livable Active Communities and Environments (PLACE) Program**  
Jean Armbruster, MA, Director  
895 S. Vermont Ave, 14<sup>th</sup> floor  
Los Angeles, California 90005  
TEL (213) 351-1907 • FAX (213) 637-4879  
[www.lapublichealth.org/place](http://www.lapublichealth.org/place)



**BOARD OF SUPERVISORS**

Gloria Molina  
First District  
Mark Ridley-Thomas  
Second District  
Zev Yaroslavsky  
Third District  
Don Knabe  
Fourth District  
Michael D. Antonovich  
Fifth District

June 13, 2011

David McNeill, Executive Officer  
Baldwin Hills Conservancy  
5120 Goldleaf Circle, Suite 290  
Los Angeles, CA 90056

Dear Mr. McNeill:

It is my pleasure to write in support of the City of Culver City's Jefferson Boulevard Streetscape and Pedestrian and Bicycle Access Improvements grant application through the Baldwin Hills Conservancy's (BHC) Proposition 84 Grant Program.

Los Angeles County Public Health Department's PLACE Program (Policies for Livable Active Communities and Environments) is dedicated to fostering policy and environmental change that supports the development of healthy, active communities for all Los Angeles County residents. In 2007, we made a three-year grant to the City of Culver City to develop their first Bicycle and Pedestrian Master Plan. The City has performed very well as a grantee; the Bicycle and Pedestrian Master Plan was adopted by Culver City's City Council in November of 2010 and the City is currently work hard to implement the plan.

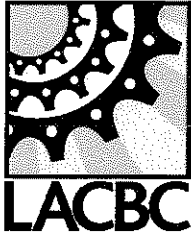
Improving the safety for pedestrians and bicyclists along Jefferson Blvd near the entrance to the Baldwin Hills Scenic Overlook was a key need identified by community stakeholders during the development of Culver City's Bicycle and Pedestrian Master Plan. The proposed bicycle and pedestrian improvements will provide important regional transportation connections, including the Ballona Creek Bike Path. Currently, non-motorized access to the Overlook is limited and bicyclists and pedestrian negotiate streets that are not designed for their safety and ease of use. The proposed improvements are intended to be environmentally-friendly by using permeable materials, native plantings, and by supporting non-motorized travel options.

I enthusiastically support the City of Culver City's application. Please feel free to contact me if you have any questions or require additional information. Thank you for your consideration.

Sincerely,

A handwritten signature in black ink, appearing to read "Jean Armbruster".

Jean Armbruster  
Director, Policies for Livable, Active Communities and Environments (PLACE)



Los Angeles County Bicycle Coalition  
634 S. Spring St. Suite 821  
Los Angeles, CA 90014  
Phone 213.629.2142  
Facsimile 213.629.2259  
www.la-bike.org

June 10, 2011

David McNeill, Executive Officer  
Baldwin Hills Conservancy  
5120 Goldleaf Circle, Suite 290  
Los Angeles, CA 90056

**Subject:** Support Letter for the City of Culver City's Jefferson Boulevard Streetscape and Pedestrian and Bicycle Access Improvements Grant Application

Dear Mr. McNeill:

I am writing to express the Los Angeles County Bicycle Coalition's strong support for the City of Culver City's Jefferson Boulevard Streetscape and Pedestrian and Bicycle Access Improvements grant application through the Baldwin Hills Conservancy's (BHC) Proposition 84 Grant Program.

There is a great need for streetscape and access improvements along Jefferson Boulevard near the entrance to the Baldwin Hills Scenic Overlook (Overlook) at Hetzler Road. Currently, non-motorized access to the Overlook is limited. There are no bicycle facilities linking Ballona Creek to the Overlook or bicycle parking at the Overlook entrance. Also, there are no sidewalks on either side of the stretch of Jefferson Boulevard near the Overlook, so visitors also sometimes elect to walk in the roadway adjacent to the travel lanes to access the park. Additionally, visitors often approach the park from the park on the north (Creek) side of the road and negotiate the four-lane major arterial, which lacks a raised median or nearby marked or signalized crossing.

The proposed improvements will improve bicycle access between the Creek and Overlook by installing bike lanes between approximately Duquesne and the City boundary near the park as well as bicycle parking near the park entrance. It will also improve pedestrian access and comfort by installing raised median islands, curb extensions, sidewalks, a pedestrian signal with a crosswalk and advance stop bars. Finally, a new small parking lot near the park entrance on Jefferson will provide additional parking options for visitors on the park side of Jefferson Boulevard. It is our understanding that the proposed improvements are intended to be environmentally-friendly by using permeable materials, native plantings, and by supporting non-motorized travel options. These improvements will create a vital link between two amazing open spaces the communities of Culver City and City of Los Angeles enjoy daily.

The Los Angeles County Bicycle Coalition strongly supports these infrastructure improvements to improve the access to and the environmental sustainability of this critical area adjacent between the Overlook and Ballona Creek and urges their funding through the BHC's grant program.

Sincerely,

Alexis Lantz  
Planning & Policy Director  
Los Angeles County Bicycle Coalition



David McNeill, Executive Officer  
Baldwin Hills Conservancy  
5120 Goldleaf Circle, Suite 290  
Los Angeles, CA 90056

**Subject:** Support Letter for the City of Culver City's Jefferson Boulevard Streetscape and Pedestrian and Bicycle Access Improvements Grant Application

June 7, 2011

Dear Mr. McNeill:

The Culver City Bicycle Coalition would like to express strong support for the City of Culver City's Jefferson Boulevard Streetscape and Pedestrian and Bicycle Access Improvements grant application through the Baldwin Hills Conservancy's (BHC) Proposition 84 Grant Program.

There is a great need for streetscape and access improvements along Jefferson Boulevard near the entrance to the Baldwin Hills Scenic Overlook (Overlook) at Hetzler Road. Currently, non-motorized access to the Overlook is limited. There are no bicycle facilities linking Ballona Creek to the Overlook or bicycle parking at the Overlook entrance. Also, there are no sidewalks on either side of the stretch of Jefferson Boulevard near the Overlook, so visitors often elect to walk in the roadway adjacent to the travel lanes to access the park. Additionally, visitors frequently approach the park from the park on the north (Creek) side of the road and negotiate the four-lane major arterial, which lacks a raised median or nearby marked or signalized crossing.

Members of the Culver City Bicycle Coalition and numerous area residents have expressed growing concern over pedestrian and cyclist safety and accessibility in this area, which will be rectified by the City of Culver City's proposal.

The proposed improvements will improve bicycle access between the Creek and Overlook by installing bike lanes between approx. Duquesne and the City boundary near the park as well as bicycle parking near the park entrance. It will also improve pedestrian access and comfort by installing raised median islands, curb extensions, sidewalks, a pedestrian signal with a crosswalk and advance stop bars. Finally, a new small parking lot near the park entrance on Jefferson will provide additional parking options for visitors on the park side of Jefferson Boulevard. The proposed improvements are intended to be environmentally-friendly by using permeable materials, native plantings, and by supporting non-motorized travel options.

The Culver City Bicycle Coalition strongly supports these infrastructure improvements to improve the access to and the environmental sustainability of this critical area adjacent between the Overlook and Ballona Creek and urges their funding through the BHC's grant program.

Sincerely,

A handwritten signature in black ink, appearing to read 'M. Sahli-Wells', is written above the typed name.

Meghan Sahli-Wells  
founding member, Culver City Bicycle Coalition  
ccbicyclecoalition@gmail.com  
<http://ccbike.org/>  
(310) 845-5831

11027 Westwood Blvd.  
Culver City, CA 90230



(310) 237-3447 phone  
SierraWestLA@gmail.com  
<http://sierrawest.us>

June 6, 2011

**David McNeill, Executive Officer**  
Baldwin Hills Conservancy  
5120 Goldleaf Circle, Suite 290  
Los Angeles, CA 90056

Subject: Support Letter for the City of Culver City's Jefferson Boulevard Streetscape and Pedestrian and Bicycle Access Improvements Grant Application

Dear Mr. McNeill:

I am writing to urge the Baldwin Hills Conservancy to fully fund the City of Culver City's Jefferson Boulevard Streetscape and Pedestrian and Bicycle Access Improvements grant application through the Baldwin Hills Conservancy's (BHC) Proposition 84 Grant Program.

Access to open space is a major priority of the Sierra Club. The area along Jefferson Boulevard near the entrance to the Baldwin Hills Scenic Overlook at Hetzler Road is in desperate need of improvement. Currently, non-motorized access to the Overlook is limited. There are no bicycle facilities linking Ballona Creek to the Overlook or bicycle parking at the Overlook entrance. There are no sidewalks on either side of the stretch of Jefferson Boulevard near the Overlook, so visitors also sometimes elect to walk in the roadway adjacent to the travel lanes to access the park. Additionally, visitors often approach the park from the park on the north (Creek) side of the road and negotiate the four-lane major arterial, which lacks a raised median or nearby marked or signalized crossing.

The proposed improvements will improve bicycle access between the Creek and Overlook by installing bike lanes between approx. Duquesne and the City boundary near the park as well as bicycle parking near the park entrance. It will also improve pedestrian access and safety by installing raised median islands, curb extensions, sidewalks, a pedestrian signal (ideally with push button) with a crosswalk and advance stop bars. Finally, a new small parking lot near the park entrance on Jefferson will provide additional parking options for visitors on the park side of Jefferson Boulevard. The proposed improvements are intended to be environmentally-friendly by using permeable materials, native plantings, and by supporting non-motorized travel options.

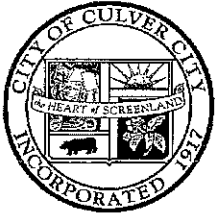
The Sierra Club strongly supports these infrastructure improvements to improve the access to and the environmental sustainability of this critical area adjacent between the Overlook and Ballona Creek and urges their funding through the BHC's grant program.

Sincerely,

David A. Haake, M.D.  
Chair, West Los Angeles Group of the Sierra Club

## DRAFT ENVIRONMENTAL DOCUMENTS

- Draft CEQA document for project (except parking lot)
- CEQA document for preliminary work on parking lot (additional CEQA work will likely be required for parking lot paving)



# Culver CITY

(310) 253-5635

FAX (310) 253-5626

9770 CULVER BOULEVARD, CULVER CITY, CALIFORNIA 90232-0507

## NOTICE OF EXEMPTION

June 14, 2011

☒ Los Angeles County Clerk  
Attention: Environmental Filing/Registration  
12400 Imperial Highway, Suite 2001  
Norwalk, CA 90650

☒ Governor's Office of Planning and  
Research  
1400 Tenth Street, Room 121  
Sacramento, CA 95814

---

### PROJECT:

Title and Case No.: Jefferson Boulevard Streetscape and Pedestrian and Bicycle Access Improvements

Address/Location: Jefferson Boulevard right-of-way between approx. Duquesne Avenue and Higuera Street

Project Description: The proposed project will improve access to the Ballona Creek and Baldwin Hills Scenic Overlook (Overlook) by constructing environmentally-sustainable improvements, including: raised median islands, sidewalks, bike lanes, a pedestrian signal with a crosswalk and advance stop bars, and curb extensions near the Jefferson Boulevard and Hetzler Road entrance to the Overlook.

---

APPLICANT: City of Culver City  
Public Works Department  
9770 Culver Boulevard, Culver City, CA 90232

---

### CULVER CITY APPROVAL ACTION:

#### 1. Administrative Staff on June 14, 2011.

The decision making body, in approving the project described above, determined that the project is exempt from further environmental impact assessment per the CEQA guidelines:

Type of Exemption: Categorical Exemption  
CEQA Section: 15301 (Existing Facilities), 15304 (Minor Alterations to Land),  
General Rule Exemption Section 15061(b)(3)  
Class: 1 and 4

#### 2. Reason why project is Exempt (brief):

Section 15301 exempts the minor alteration of existing facilities involving negligible expansion of use, including modification of existing streets, sidewalks, gutters, and similar facilities. Section 15304 covers minor alternation in the condition of land, water or vegetation, which do not involve the removal of healthy,

mature, scenic trees, including the creation of improvements such as bike lanes. As the project is entirely within existing right-of-ways/street corridors, does not include the removal of any healthy scenic trees, and involves improvements to existing streets, such as striping, signage, bulb outs and curb extensions, and sidewalks, it fits within these exemption categories. Furthermore, the project is further exempted by Section 15061(b)(3). This section is the general exemption which states that CEQA only applies to projects that have the potential for causing a significant effect of the environment. This project includes relatively minor changes to existing street corridors with the goal of improving pedestrian and bicycle access and reducing vehicle trips. The proposed hardscapes (sidewalks and parking lot) are proposed to be constructed out of permeable paving to ensure that the project is environmentally sustainable. It does not have the potential to have a negative impact on the environment, and thus qualifies for this overall exemption.

---

Helen Kerstein, Management Analyst





State of California – The Resources Agency  
DEPARTMENT OF PARKS AND RECREATION

## NOTICE OF EXEMPTION

**TO:** Office of Planning and Research  
1400 Tenth Street, Room 222  
P.O. Box 3044  
Sacramento, CA 95814

**FROM:** Department of Parks and Recreation  
Angeles District  
1925 Las Virgenes Road  
Calabasas, CA 91302-1909

**PROJECT TITLE:** Jefferson Parking Lot

**LOCATION:** Baldwin Hills Scenic Overlook

**COUNTY:** Los Angeles

**DESCRIPTION OF THE NATURE AND PURPOSE OF PROJECT:**

This project is the creation of a small parking lot on a strip of undeveloped land at the fringe of the park land, and along busy Jefferson Blvd. The proposed surface will be a gravel road base, not paving.

DPR-approved standard project requirements have been incorporated into this project. A copy of these requirements may be obtained by submitting a request to the project Environmental Coordinator listed below.

**PUBLIC AGENCY APPROVING THE PROJECT:** California Department of Parks and Recreation

**NAME OF DIVISION OR DISTRICT CARRYING OUT THE PROJECT:** Angeles

**EXEMPT STATUS:**

- ☐ Declared Emergency (Section 15269(a))  
☐ Emergency Project (Section 15269(b) and (c))  
☐ Statutory Exemption (Section )  
☒ Categorical Exemption  
Class: 3 Section(s): 15303

**REASONS WHY PROJECT IS EXEMPT:**

No potential for significant impacts to the environment is anticipated in compliance with Section 15300.2.

Consists of construction of limited numbers of new, small facilities (Class 3)

**CONTACT:** Tom Dore, Environmental Coordinator  
California Department of Parks & Recreation  
Angeles District  
1925 Las Virgenes Road  
Calabasas, CA 91302-1909

**PHONE NO.:** (818) 880-0365

**EMAIL:** tdore@parks.ca.gov

  
\_\_\_\_\_  
Craig Sap  
Acting District Superintendent, Angeles District

6/10/11  
\_\_\_\_\_  
Date

## **BALDWIN HILLS CONSERVANCY**

5120 West Goldleaf Circle, Suite 290

Los Angeles, CA 90056

Ph: (323) 290-5270

Fx: (323) 290-5278

[www.bhc.ca.gov](http://www.bhc.ca.gov)

---

### **Memorandum**

**To: Governing Board**

**Fr: David McNeill**

**Date: June 24, 2011**

**Re: Item 6: Executive Officer Report**

#### **Projects Status Report**

To be delivered the week of board meeting.

#### **Fiscal Update**

To be delivered the week of board meeting.