

**Baldwin Hills Conservancy (BHC)**  
**NOTICE OF PUBLIC MEETING**  
*Thursday, June 17, 2010*  
*9:00 a.m. – 12:00 p.m.*  
**BOARD FIELD TRIP DEPARTING FROM**  
Kenneth Hahn State Recreation Area  
4100 S. La Cienega Blvd  
Los Angeles, CA 90056  
Phone (323) 298-3660

**PUBLIC MEETING - BALDWIN HILLS CONSERVANCY GOVERNING BOARD**

**9:00 - CALL TO ORDER    Mr. Russ Guiney**

**MEETING AGENDA**

PUBLIC COMMENTS ON AGENDA OR NON-AGENDA ITEMS WILL BE CALLED PRIOR TO ACTION ITEMS

***Public Comment and Time Limits: If you wish to speak on an agenda item or a non-agenda item, please fill out a speaker card identifying the subject of your comments and give it to a staff person before the public hearing. The cards are available near the door to the meeting room. Individuals wishing to comment will be allowed up to three minutes to speak. Speaker times may be reduced depending on the number of speakers.***

1.     Roll Call
2.     Field Trip – Site visits to various Baldwin Hills Conservancy project locations

**Buses will depart from the KHSRA Community Center parking lot (each stop is planned for approximately 15 minutes). Members of the public are welcome to ride on the bus by reserving a space with the BHC office at 323-290-7270 no later than five days in advance of the meeting date.**

**9:15 AM:** Eastern Gateway (Los Angeles County Department of Parks and Recreation). Stop at Norman Houston Park for viewing of Stocker Corridor, Ingold Park, Don Lorenzo entrance and Eastern Gateway improvements leading to the Eastern Ridgeline Facilities expansion.

**10:00 AM:** Milton Street project (Mountains Recreation and Conservation Authority). Present plans for linear park linking a middle school and the public with the Ballona Creek and outdoor interpretive programming.

**10:45 AM:** Stoneview Drive (Baldwin Hills Regional Conservation Authority). Review objectives to acquire the site for public access to the western ridge park lands as well as refurbish facilities for green technology and environmental conservation.

**11:15 PM:** Baldwin Hills Scenic Overlook (State Parks). Present history of the site's acquisition and development along with current programs offered by the visitor center.

**Buses will return to the KHSRA Community Center parking lot by approximately 12:00 PM**

3. Board Member Announcements or Agenda Items for Future Meetings

***Pursuant to Government Code Section 11126 subdivision (c)(7)(A), Section 11126.3(a), and Section 11126(e), the Conservancy may hold a closed session to discuss and take possible action regarding instructions on real estate negotiations, on personnel matters and/or to receive advice of counsel on pending or potential litigation. Confidential memoranda related to these issues may be considered during such closed session discussions.***

4. Closed Session: Conference to discuss negotiations and strategies for the following properties: Parcel Numbers: 4204-014-024, 25 and 26  
Negotiating Party: Elliot Dolin, Agency Negotiator: Joe Edmiston, Parcel Number: 4204-010-010 Negotiating Party: Rick Bobertz, Agency Negotiator: David McNeill

Next meeting is tentatively scheduled for Thursday evening, August 5th at 6:30 p.m.

#### **ADJOURNMENT**

In accordance with the Americans with Disabilities Act of 1990, if you require a disability related modification or accommodations to attend or participate in this meeting, including auxiliary aids or services, please call Gloria Dangerfield at the Conservancy at (323) 290-5270 at least five days prior to the meeting. For more information about the Conservancy, you may visit our website at **[www.bhc.ca.gov](http://www.bhc.ca.gov)**

## BALDWIN HILLS CONSERVANCY

5120 West Goldleaf Circle, Suite 290

Los Angeles, CA 90056

Ph: (323) 290-5270

Fx: (323) 290-5278

[www.bhc.ca.gov](http://www.bhc.ca.gov)

---

### Memorandum

**To: Governing Board**

**Fr: David McNeill**

**Date: June 17, 2010**

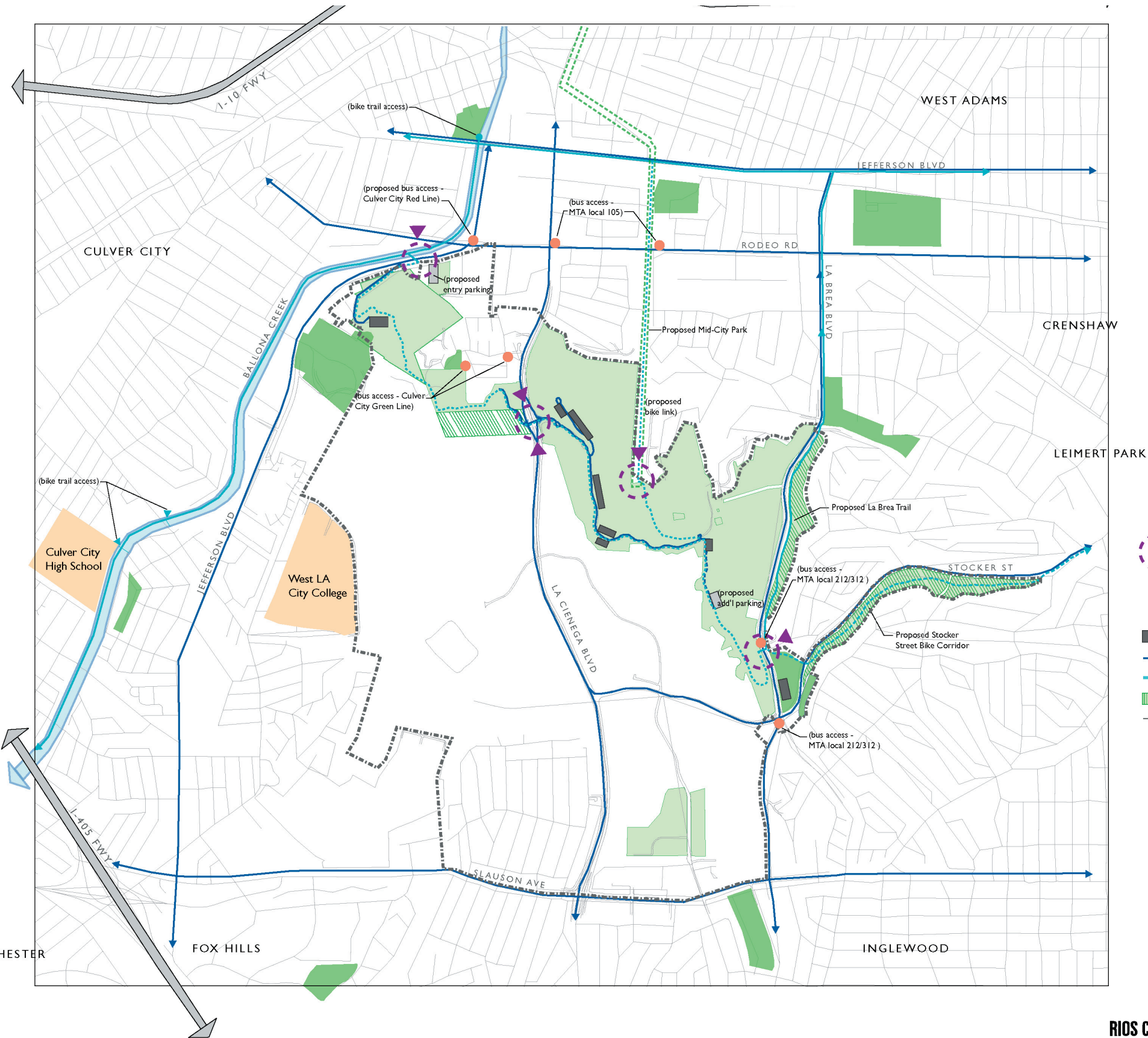
**Re: Item 2:** Field trip itinerary for site visits to Baldwin Hills Conservancy projects


**Background:** The BHC has made exceptional progress towards purchasing and linking open space for the expansion of Kenneth Hahn State Recreation Area. With over 625 acres currently in public ownership, nearly 500 of them are available for public use. Today's field trip will highlight some of the projects in various stages of development, including targeted, newly acquired, and existing public properties. Though partnerships with non-profits, joint powers authorities, state, city and county agencies, the BHC board has been a successful model for conceiving, initiating, funding and managing the community's vision for increased access to parkland within the conservancy's boundaries.







Attachments: (see Parklands Map and Community Access)

Parklands Map





 Proposed Community Gateway  
(entered by foot, bike, or bus)

-  Community Bus Stop
-  Parking Area
-  Bus & Car Route
-  Bike Route
-  Key Linkage Site
-  BHC Planning Boundary



**Eastern Gateway**

**9:15 AM:** *Eastern Gateway includes a range of BHC, City, County and State Park projects emanating from the five points intersection. A range of public access and multi-benefit improvements are currently in the construction phase at Don Lorenzo and La Brea. To the south, Stocker Corridor, Ingold Park await approvals for enhancements and linkages that will maximize pedestrian access to Kenneth Hahn State Recreation and lead to the first phase of the BHC's proposed Eastern Ridgeline facilities expansion project being managed by the County Executive Officer and public works department. To the north, trail grant proposals for the La Brea Greenbelt will provide improved landscaping and future pedestrian access connecting Jim Gilliam Park and the Baldwin Vista/Village Green communities with the eastern ridge.*

*Attachments: (see Baldwin Hills Eastern Gateway Improvements and Eastern Ridge Conceptual Plan)*

- 1 NEW DECORATIVE CROSSWALK
- 2 NEW CURB RAMP
- 3 NEW STAIRS TO EXISTING TRAIL
- 4 NEW INFILTRATION BASIN
- 5 NEW NATIVE PLANTING
- 6 EXISTING PEDESTRIAN TRAIL
- 7 RELOCATED BUS STOP AND NEW SHELTER
- 8 NEW BUS PAD
- 9 NEW PEDESTRIAN WALK





## Eastern Ridge Conceptual Plan





**Milton Street Park**

**10:00 AM:** *The BHC partnered with the BHRCA for the acquisition of the 1.2 acre property in 2007. Additional BHC funding was leveraged with the Coastal Conservancy to provide a grant to the MRCA to develop a community-based plan for the Milton Street parcel. Plans include a multi-benefit park linking a middle school and Ballona Creek path users with outdoor interpretive amenities, seating and a bird watching area.*

*Attachments: (see Milton Project Summary and Draft Milton Street Concept)*



## MOUNTAINS RECREATION & CONSERVATION AUTHORITY

Los Angeles River Center and Gardens  
570 West Avenue Twenty-six, Suite 100  
Los Angeles, California 90065  
Phone (323) 221-9944 Fax (323) 221-9934

### **MILTON STREET PARK PROJECT**

The Milton Street Project area is a 1.2-acre rectangular parcel directly adjacent to the Ballona Creek Trail and Bike Path. To the east of the site is the Centinela Park (a rest area and access point to the bike/pedestrian path from Centinela Blvd). Directly north of the proposed park is a small residential street, Milton St., and Marina Del Ray Middle School immediately north of that. To the west a short distance are Ballona Wetlands, separated from the proposed park by a few homes and the bridge of the Route 90-Marina Freeway that acts as a threshold.

The development of a park at the Milton Street parcel has great potential to increase needed open space in Los Angeles, provide a passive recreational amenity as well as incorporate interpretive elements to heighten awareness of area resources. This is a significant location because it also provides a large opportunity to implement storm water Best Management Practices (BMPs), support the City of Los Angeles' adopted TMDL for the Creek, and implement Low Impact Development and green building techniques. The park will also provide a new public access point to the bicycle path through the installation of a decorative gate. A new decorative fence will replace the existing damaged chain link fence and will extend along the Northwest boarder of the property. In addition, the current design plans to divert the existing bicycle path directly through the new park.

Our project will implement BMPs through the design of an infiltration basin to capture and treat the storm water that falls onto the site and recharge the groundwater below. Also, there are several additional water quality improvement components that will be inserted into the design pending feasibility studies: The first opportunity is to divert one or more of the storm drains that exist at either end of Milton Street for treatment on our site rather than allowing it to continue to drain into the Creek. This would significantly reduce the amount of pollutants presently being diverted directly into Ballona Creek. The second alternative explores closing Milton Street in order to transform it into a large water quality component by changing the asphalt paving into permeable paving. The goal is to capture all water that falls onto the street and enable it to infiltrate into the groundwater through natural filtration.

Furthermore, the park will be available to area schools to support and demonstrate related curriculum. We feel that this close proximity of the natural and urban environments provides opportunities for the public to interact with the creek and to learn about the natural environment around them. As an example, the near-by Marina del Rey Middle School is planning to introduce a new learning center amenity to the school, the Marina Science Academy, and this future park will provide an optimal location for an outdoor classroom, a place for bird watching, and an opportunity for other learning activities. We plan to introduce educational components, such as interpretive panels, for the public to become more educated on water supply, water quality issues, local wildlife, various habitats, history of Ballona Creek, and will highlight the areas coastal resources.

## Milton Street Park Draft Concept

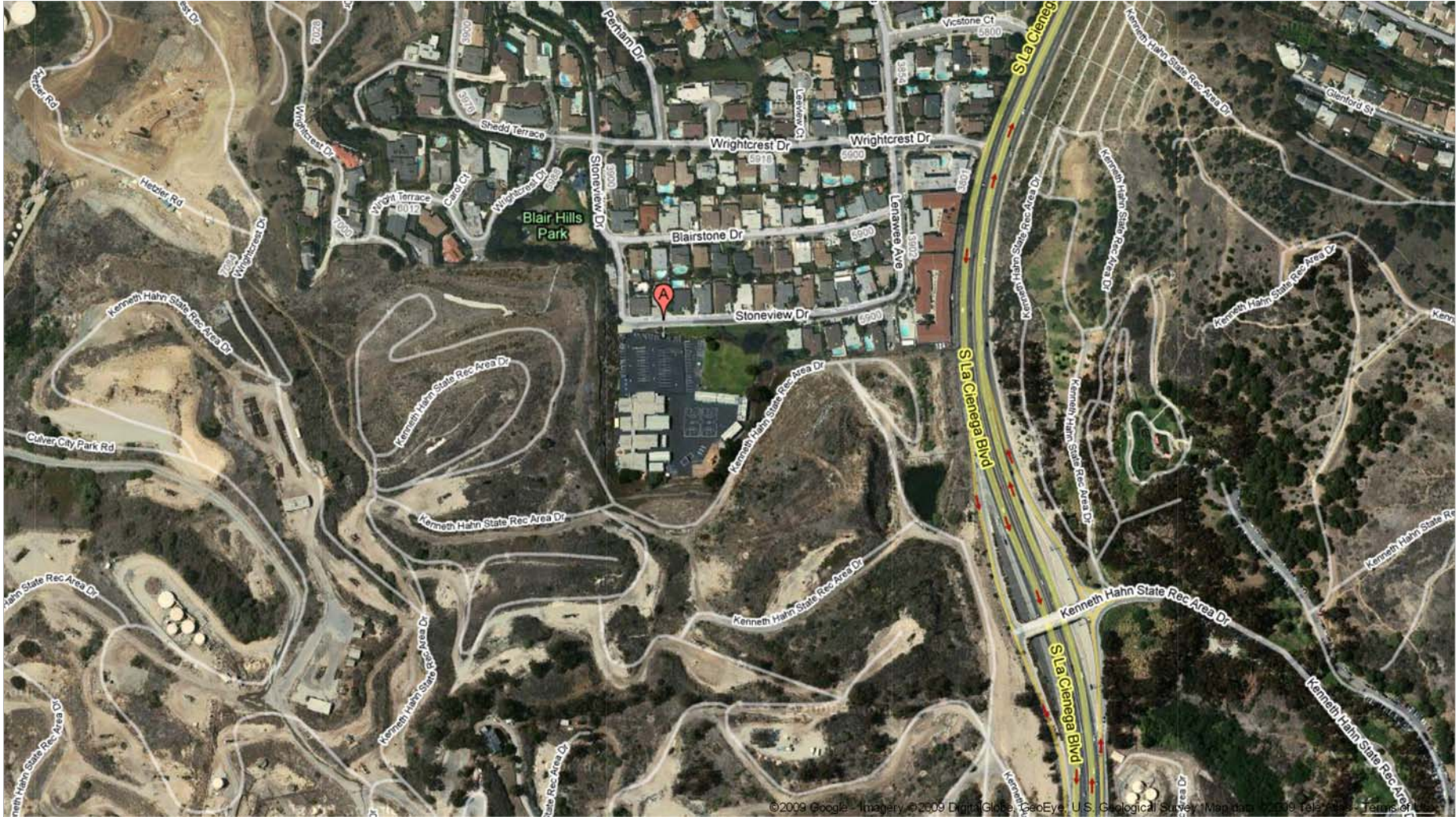




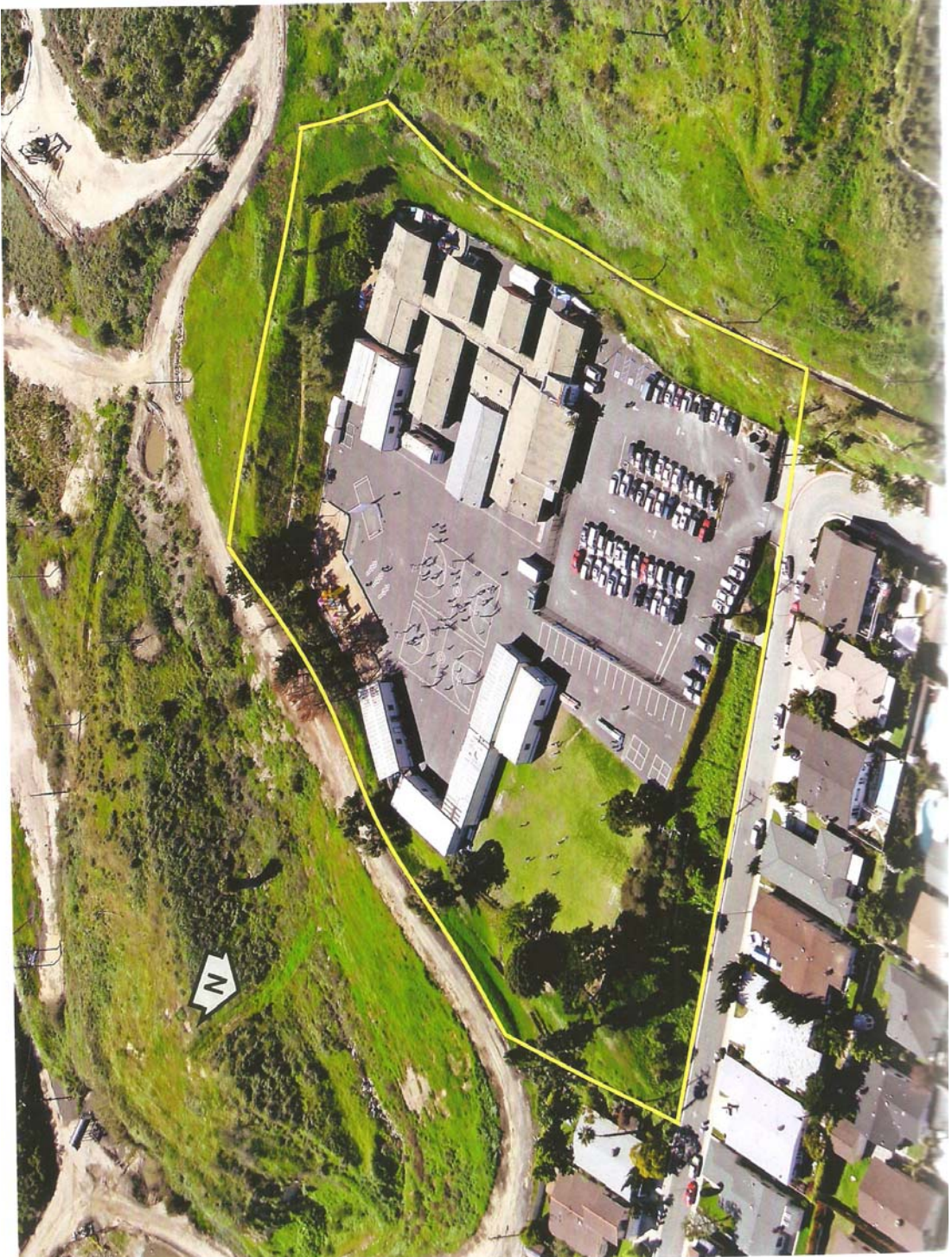
**5950 Stoneview Drive**

**10:45 AM:** *Stoneview Drive is a former school site targeted for acquisition through match of BHC Prop 40 funds and County Prop A excess funds. Project objectives for the site include improved public access to parklands in the western ridge as well as adaptive re-use of the existing structures for an administrative network of green technology, environmental conservation and resource based interpretative programming.*

*Attachments: (see School Site Aerials)*









### **Baldwin Hills Scenic Overlook**

**11:15 PM:** *The 50 acre park has been a successful addition to the park lands. California State Park's state-of-the-art visitor center, interpretive exhibits, trails and steps, the BHSO is a popular destination with a bright future. A new link and trails connecting the BHSO to neighboring Culver City Park has just been completed through collaborative efforts of the BHC, MRCA, Culver City, and State Parks. Much needed outdoor resource education and interpretation is also being provided to local students through the Baldwin Hills Greenhouse Program funded by the BHC's Interpretation Initiative and the L.A. Audubon Society. The BHC continues its leadership role of initiating and implementing proposals to provide more pedestrian friendly parking, streetscapes and connections to the Ballona Creek.*

*Attachments: (see State Parks Foundation Report, BHSO Photo & Map, Alternative Parking Illustration, Jefferson Urban Greening Proposal)*

# Heroes

**BALDWIN HILLS SCENIC OVERLOOK** stretches out across 50 acres in Los Angeles County, approximately halfway between downtown L.A. and the coast. Rising to 511 feet, it dominates the local geography – a sea of open space and trails in a dense urban landscape. It might be called a scenic overlook – and in fact the views are spectacular – but it is actually much more. There is also a state-of-the-art visitor center. And, the LA Audubon Society, teaming up with State Parks, the Baldwin Hills Conservancy, and a wide range of other partners, has created several fantastic programs to engage and educate local high school kids while also helping with the restoration of Baldwin Hills (a unit of the state park system), and nearby Kenneth Hahn State Recreation Area.

10 The Baldwin Hills Greenhouse Internship Program (one of several programs) works with students from nearby Dorsey High School to conduct scientific research on native plants working out of a greenhouse that CSPF purchased several years ago. The Interns are guided by professional ecologist Dr. Margot Griswold, and Stacey Vigallon, Director of Interpretation for LA Audubon. Audubon Board Member Garry George, a long-time supporter of Baldwin Hills Scenic Overlook and an avid native plant gardener himself, also helped start this innovative program.



*Students from Dorsey High School,  
images by Stacey Vigallon*





**David McNeill**  
**Executive Officer, Baldwin Hills Conservancy**

The Baldwin Hills Conservancy, a government agency under California's Department of Natural Resources, works to acquire open space and manage public lands within the Baldwin Hills area. It also works to provide recreation, restoration and protection of wildlife habitat within the territory for the public's enjoyment and educational experience. The Conservancy has been headed up by David McNeill since 2001. Under his guidance the Conservancy has been very successful pursuing its goal of acquiring and developing parklands in the Baldwin Hills and Ballona Creek region of Los Angeles County.

In addition to his work as Executive Officer of the Conservancy, David has been closely involved with the Los Angeles Community for over 20 years, including serving as the Public Affairs Director for Community Conservancy International for almost three years.

"The Conservancy is critical to the long range goals for preservation in Southern California. The unique composition of this agency – local community representatives, oil and land regulatory experts, and various local government entities – has proven invaluable to the acquisitions and improvements to date. Board members have created a positive community forum for resolving issues, removing unintended obstacles, and maintaining pressure for environmental action in urban communities. For me, being a part of this constituent-driven effort makes the pursuit of the One Big Park vision a very tangible objective." – David McNeill



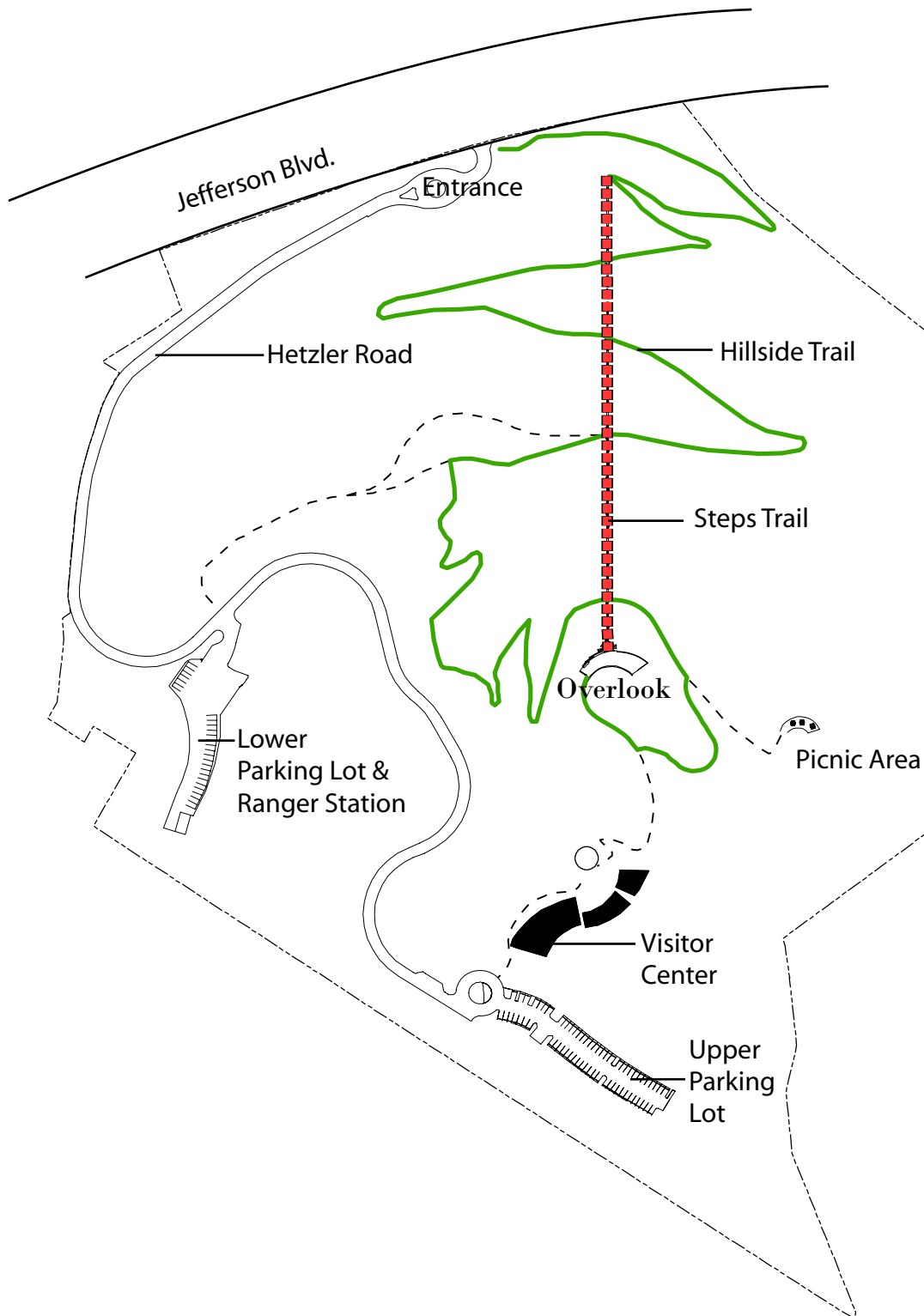
**Stacey Vigallon**  
**Director of Interpretation for Los Angeles Audubon**  
**Dr. Margot Griswold**  
**Senior Restoration Ecologist at NewFields**

Stacey and Margot have been working together since 2007 on several interrelated programs in and around the Baldwin Hills. The Greenhouse Internship Program works with highly motivated students from Dorsey High School to conduct scientific research on native plants during the course of the school year. Each student works on some aspect of habitat restoration on the coastal sage scrub ecosystem of the Baldwin Hills. They spend 10 months working out of the park's greenhouse with the help of Stacey and others. All of the research and results are guided by Dr. Griswold. Through science-based habitat restoration, these young adults receive a unique education, build up their resumes, are empowered with leadership skills to engage and motivate their peers and community, and all the while help to improve the health of their local environment!

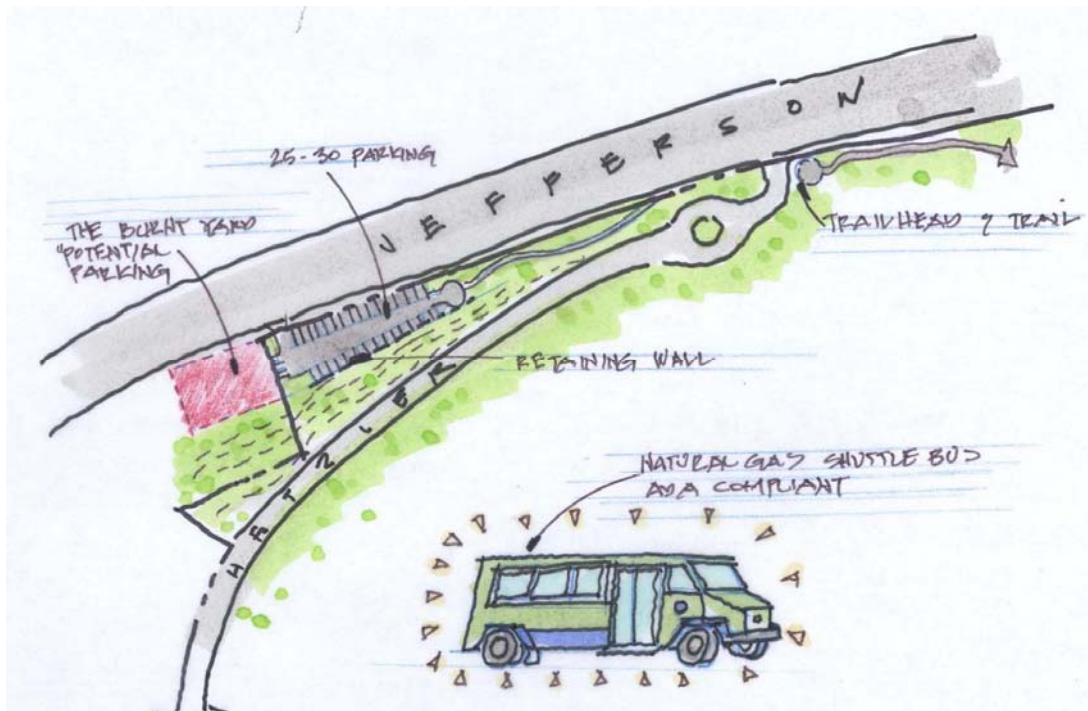
The Restoration Leadership Program extends the habitat restoration efforts to the nearby Kenneth Hahn State Recreation Area and other locations within the Ballona Creek Watershed. The recreation area also has a Native Plant and Wildlife Garden Education Program for inner-city children in 3rd through 6th grades. These programs thrive today thanks in part to grants from the Baldwin Hills Conservancy and TogetherGreen.







## Baldwin Hills Scenic Overlook



## **‘A GREEN ALTERNATIVE’ For Baldwin Hills Scenic Overlook**

Another option to placing more parking at the top of Baldwin Hills Scenic Overlook and to minimize major grading, is to explore placing parking along Jefferson Boulevard. In the past, we had explored placing a temporary parking at the triangular parcel we own along Jefferson at Hetzler, to serve as a temporary trailhead parking during the IPU process.

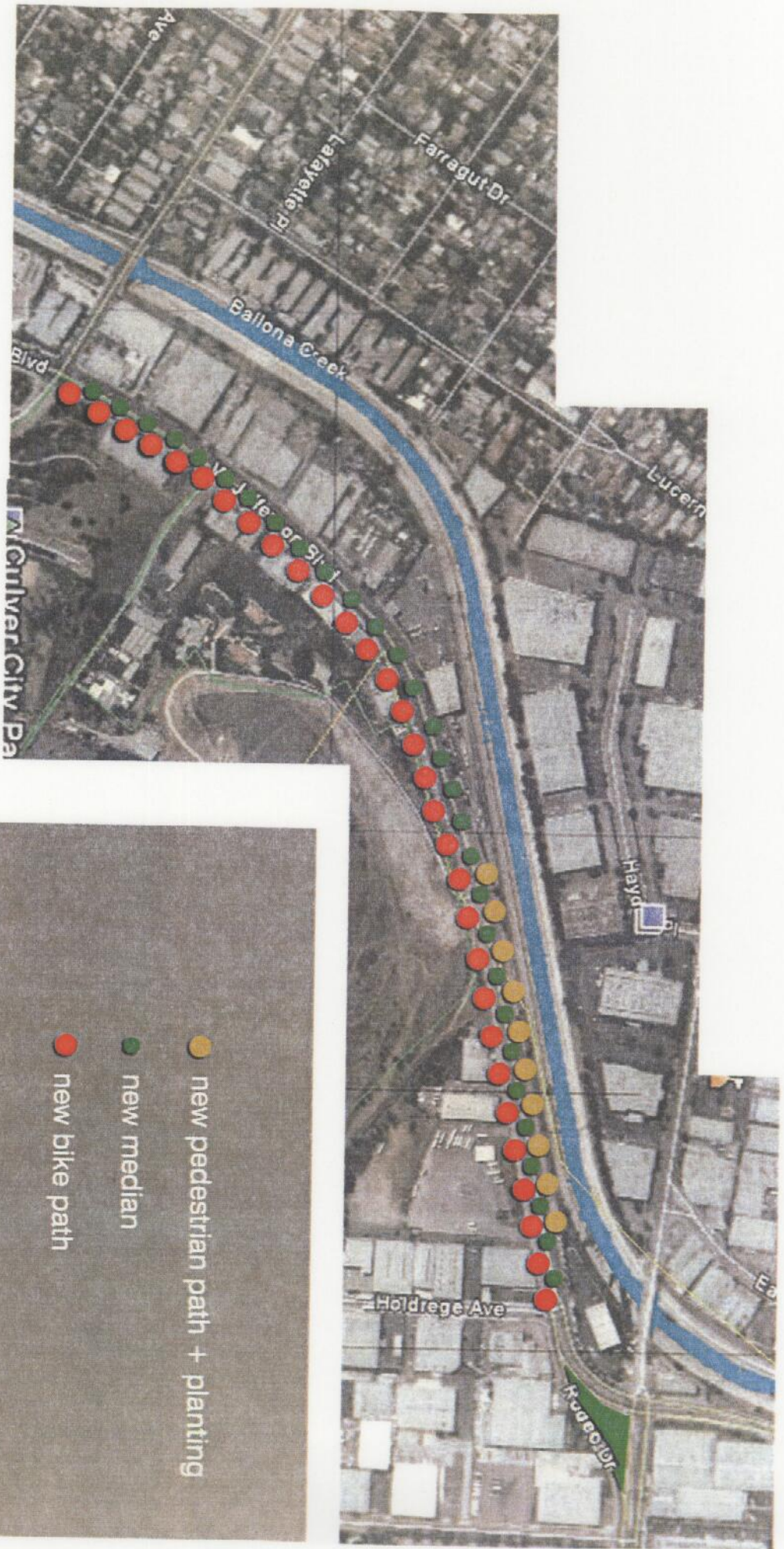
Retaining walls will have to be installed to accommodate the proposed parking. Also, with a past fire destroying the adjacent property (the lot with the stored bus and debris), the District should explore along with BHC in purchasing that small lot. If so, we can create additional parking.

This lower parking area can be closed off at night with a securable gate, and during the day time hours, the area can serve as a trailhead parking (potential revenue generation).

With the construction cost saving, the District can purchase a natural gas or electrical powered shuttle bus (similar to the NPS shuttle buses and their strategy to minimize parking and traffic within their parks), to shuttle people to the Visitor Center during special events. This shuttle bus will be a ‘showcase’ item for State Parks commitment to ‘Sustainable Design’. The bus can be used by the District for special events throughout the southern region.

The cost of this Green option, excluding the purchase of the adjacent lot, will be far less than the parking expansion at the top of the site. Also, this option will be less disruptive to the park operations.





- new pedestrian path + planting
- new median
- new bike path



# Jefferson Boulevard Urban Greening Project