

BALDWIN HILLS CONSERVANCY NOTICE OF PUBLIC MEETING

The meeting of the Baldwin Hills Conservancy (BHC) will be held
Friday, July 17, 2020 10:00 AM - 12:00 PM

Pursuant to Executive Order N-29-20 issued by Governor Gavin Newsom on March 17, 2020, certain provisions of the Bagley Keene Open Meeting Act are suspended due to a State of Emergency in response to the COVID-19 pandemic. Consistent with the Executive Order, this public meeting will be conducted by teleconference and internet, with no public locations.

Members of the public may dial into the teleconference
and or join the meeting online at Zoom.

Please click the link below to join the webinar:
<https://ca-water-gov.zoom.us/j/91922863898>

Or Telephone:
Dial:
USA 214 765 0479
USA 8882780296 (US Toll Free)
Conference code: 596019

Materials for the meeting will be available at the Conservancy website on the Meetings & Notices tab in advance of the meeting date.

10:00 AM - CALL TO ORDER – Keshia Sexton, Chair

MEETING AGENDA

PUBLIC COMMENTS ON AGENDA OR NON-AGENDA ITEMS SHOULD BE SUBMITTED BEFORE ROLL CALL

Public Comment and Time Limits: Members of the public can make comments in advance by emailing tiffany.jones@bhc.ca.gov or during the meeting by following the moderator's directions on how to indicate their interest in speaking. Public comment will be taken prior to action on agenda items and at the end of the meeting for non-agenda items. ***Individuals wishing to comment will be allowed up to three minutes to speak. Speaking times may be reduced depending upon the number of speakers.***

1. Roll Call – BHC Staff
2. Approval of Minutes (May) – Keshia Sexton, Chair
3. Public Comments – Keshia Sexton, Chair
4. Message from the Chair – Keshia Sexton, Chair
5. Consideration of Resolution # 20-07 Authorizing a BHC Proposition 68 Local Assistance Grant in an Amount Not to Exceed \$200,000 to Climate Resolve for the Community Resilience and Access Plan for Baldwin Hills Conservancy Project – David McNeill, Executive Officer

6. 2019-20 Inglewood Oil Field Update - Uduak-Joe Ntuk, Oil and Gas Supervisor, Cal GEM
7. Baldwin Hills SNAPS Study Update - Carolyn Lozo, Chief, Oil and Gas and GHG Mitigation Branch, California Air Resources Board
8. Baldwin Hills CSD 2020 Update– Luis Perez, Oil and Gas Consultant, Los Angeles County Department of Regional Planning
9. Executive Officer Report: Legislative, Project Status, and Fiscal updates – BHC Staff Representatives
10. Board Member Announcements or Proposed Agenda Items for Future Meetings

Pursuant to Government Code Section 11126, the Conservancy may hold a closed session to discuss and take possible action regarding instructions on real estate negotiations, on personnel matters and/or to receive advice of counsel on pending or potential litigation, among other permissible subjects. Confidential memoranda related to these issues may be considered during such closed session discussions.

Next meeting is tentatively scheduled for **September 25, 2020.*

ADJOURNMENT

In accordance with the Americans with Disabilities Act of 1990, if you require a disability related modification or accommodations to attend or participate in this meeting, including auxiliary aids or services, please call the Conservancy at (323) 290-5270 at least five days prior to the meeting. For more information about the Conservancy, you may visit our website at www.bhc.ca.gov

BALDWIN HILLS CONSERVANCY

5120 West Goldleaf Circle, Suite 290

Los Angeles, CA 90056

**PUBLIC MEETING MINUTES
BALDWIN HILLS CONSERVANCY
Friday, May 29, 2020**

10:07 a.m. Call to Order - A public meeting of the Baldwin Hills Conservancy (BHC) was assembled at 10:07 a.m. on Friday, May 29, 2020 via teleconference Pursuant to Executive Order N-29-20 issued by Governor Gavin Newsom on March 17, 2020.

I. Roll Call – David McNeill, Executive Officer

Members Present: Megan Cooper, Llyod Dixon, Jacklyn Dupont Walker, Peter Garcia, Dr. Yolonda Gorman, Lacey Johnson, Robert L. Jones, Dr. Nicole Lawson, Sally Lukenbill, Joshua Nelson, Patricia O'Toole, Kevin Regan, Keshia Sexton, Marina Voskanian, Dr. Raissa White, Udock-Joe Ntuk.

Staff Present: David McNeill, Executive Officer; Gail Krippner, Grant Program Manager; Tiffany Jones, Project Manager; David Edsall Jr., Deputy Attorney General .

II. Public Comments – Keshia Sexton, Chair

No comments submitted before meeting and no comments were submitted when asked.

III. Message From the Chair – Keshia Sexton, Chair

Chair Sexton thanked the board for attending the first Baldwin Hills Conservancy Skype meeting and asked that the board and the public be patient and understanding in this transition to an all virtual platform. She informed the board that for all voting items there would be a roll call vote.

IV. Approval of Minutes (March 27, 2020) – Keshia Sexton, Chair:

Member White provided a motion to approve the minutes unanimously, Member Jones seconded. There being no objections or questions, the Chair called for any objections to the approval of the minutes. With no objections, the minutes were approved.

V. Consideration of Resolution # 20-04 Authorizing a BHC Proposition 68 Local Assistance Grant in an Amount Not to Exceed \$198,000 to Tree People Inc. for the Baldwin Hills Reservoir Revitalization Project – David McNeill, Executive Officer:

Member Dupont Walker-Jones moved to approve. Member Jones seconded the motion. Motion was approved unanimously through roll call voting.

VI. Consideration of Resolution # 20-05 Authorizing a BHC Proposition 68 Local Assistance Grant in an Amount Not to Exceed \$359,810 to Kounkuey Design Initiative (KDI) for the Mar Vista Community Greening Plan and Greenway Design Project – David McNeill, Executive Officer

Motion to approve by Member Dupont-Walker. Seconded by Member Jones. Member Dixon raised a question regarding what the implication for the BHC and came to the conclusion that the BHC will fund the planning, not implementation. Motion was approved unanimously through roll call voting.

VII. Consideration of Resolution # 20-06 Authorizing an Amendment to the Project Budget and Performance Period for Proposition 84 Agreement #BHC1708 with the Los Angeles Conservation Corps (LACC) for the Baldwin Hills Scenic Overlook Trail and Stormwater Improvement Project – David McNeill, Executive Officer

Motion to approve by Member Jones. Seconded by Member Gorman. Motion was approved unanimously through roll call voting.

VIII. Executive Officer Report: Legislative, Project Status, and Fiscal updates – BHC Staff Representatives:

Project status updates were given by Gail Krippner- 1 La Cienga Pedestrian Bridge- on schedule November 2020. 2 Scenic Overlook -planting period in the fall , 3. Water capture at YBB, grantee planning to ask for term extension. Future project may be put on hold because of new policies. Possible roadblocks- Staff drills for possible furloughs to help balance State budget. 5% reduction of office operations and 10% pay reduction covid-19 updates and closures, possible reassignment of staff.

VIII. Board Member Announcements or Proposed Agenda Items for Future Meetings

Member Ntuk informed the board about updates about changes in the Inglewood Oil Field including:

CSD-going through public health study, possible presentation of status; LA County released a draft of new oil code regulations on website with public comment until July.; tracking subsidence of Inglewood Oil Field.

Pursuant to Government Code Section 11126, the Conservancy may hold a closed session to discuss and take possible action regarding instructions on real estate negotiations, on personnel matters and/or to receive advice of counsel on pending or potential litigation, among other permissible subjects. Confidential memoranda related to these issues may be considered during such closed session discussions.

*Next meeting is tentatively scheduled for July 17, 2020.

ADJOURNMENT

There being no more business brought before the board, the meeting was adjourned at approximately **11:15 a.m.**

Approved:

_ Keisha Sexton, Chair

Date:

BALDWIN HILLS CONSERVANCY

5120 West Goldleaf Circle, Suite 290
Los Angeles, CA 90056
Phone: (323) 290-5270
www.bhc.ca.gov

Memorandum

To: Governing Board

From: David McNeill, Executive Officer

Date: July 17, 2020

Re: Item 5: Consideration of Resolution # 20-07 Authorizing a BHC Proposition 68 Local Assistance Grant in an Amount Not to Exceed \$200,000 to Climate Resolve for the Community Resilience and Access Plan for Baldwin Hills Conservancy Project

Recommendation: Approve Resolution # 20-07 Authorizing a BHC Proposition 68 Local Assistance Grant in an Amount Not to Exceed \$200,000 to Climate Resolve for the Community Resilience and Access Plan for Baldwin Hills Conservancy Project.

Background: Climate Resolve has applied for Prop 68 Local Assistance Grant Funds to develop an inclusive community resilience and access plan for the Baldwin Hills Parklands. The objective is for the Parklands to become an innovative resource in support of the region's wide range of socio-economic constituents. Resilience hubs are community serving facilities augmented to support residents, coordinate communication and distribute resources while enhancing quality of life year-round. A successfully implemented park-based hub can become the nexus of community resilience, emergency management, climate change mitigation and social equity.

The Community Resilience and Access Plan (See Attachment #1) proposes a one-and-a-half-year research-based planning process driven by local community stakeholders and agency leaders. The final product would be a written and visual electronic resource that includes research, analysis, access maps and community recommendations for implementing and sustaining a resiliency hub in the Parklands.

The project's key goals include:

1. Researching and analyzing community risk and resilience strategies in terms of climate change, public health and emergency preparedness.
2. Assessing transportation and mobility barriers to park access in collaboration with stakeholders and community-based organizations in order to develop a range of solutions to remove barriers or address inadequacies.

3. Engaging a wide variety of community members and documenting how they interact with the Parklands to inform access needs and increase usage for disadvantaged communities.
4. Publishing a final analysis to include access maps (public transit routes, pedestrian entrances, parking etc.), renderings of enhanced usage of open space, community survey data, and related material for use on the Conservancy website.

The project includes an important collaboration with SLATE-Z's leadership, a historic partnership of over 50 public, private, and community-based organizations dedicated to revitalizing South Los Angeles by moving residents to economic opportunity. SLATE-Z seeks to capitalize on opportunities brought by public transit and align and leverage the individual and collective assets of organizations working in the area. Together, the partners would engage stakeholders; review the integration of climate research results; design a community engagement plan; lead coalition and partnership-building; deploy outreach strategies.

Engagement activities would focus on stakeholder input by facilitating three focus groups in South L.A. This would include focus group meetings, an online survey, an organized bus tour of the Parklands and pop-up demonstration of an environmental pilot project such as cool pavement, cool roof or electronics charging stations in the Parklands.

Pursuant to the BHC Prop 68 Guidelines, the proposal passed all screening requirements and three professionals were selected to score the proposal using the Community Access, Education and Interpretation Projects - P68 Guideline Scoring Criteria.

The final average total score of the evaluations was 228 out of 279 possible points, which achieved the required threshold of 75%. Screening and evaluations will remain on file.

The application met all the required objectives and scored highest in the following three (3) areas:

- 1) Implementation Value – Project substantiates the implementation is feasible; financial and technical capacity and experience to perform the project demonstrated; partnerships between two or more organizations contributing towards implementation of the project secured.
- 2) Prioritization Value – Project achieves the goals of P68 by providing urban recreation and protecting or restoring natural resources; achieves one or more of the BHC's strategic objectives; addresses two or more elements of the Baldwin Hills Park Master Plan.

- 3) Category Value – Project serves/engages communities defined as disadvantaged; improves access to parklands from disadvantaged communities; accommodates the needs of users from a variety of cultural and economic backgrounds; provides educational and interpretative experiences that will significantly enhance appreciation and enjoyment of a resource; includes interpretative programming and a plan to reach community audiences with meaningful information about a natural resource; includes trips that provide an introduction to nature, physical exercise and healthy lifestyles through natural spaces; provides non-personal interpretative elements that will significantly enhance appreciation and enjoyment of a natural resource; provides informational materials but to a more limited audience.

The applicant seeks \$200,000 in Prop 68 funds for the project. There would also be a \$30,640 in-kind contribution based on Climate Resolve's staff time for project management and stakeholder engagement activities.

BALDWIN HILLS CONSERVANCY (BHC)

RESOLUTION 20-07

RESOLUTION AUTHORIZING A BHC PROPOSITION 68 LOCAL ASSISTANCE GRANT IN AN AMOUNT NOT TO EXCEED \$200,000 TO CLIMATE RESOLVE FOR THE COMMUNITY RESILIENCE AND ACCESS PLAN FOR BALDWIN HILLS CONSERVANCY

WHEREAS, under Division 22.7 of the California Public Resources Code, the Baldwin Hills Conservancy was created to acquire open space and manage public lands within the Baldwin Hills area and to provide recreation, restoration and protection of wildlife habitat within the Conservancy territory; and

WHEREAS, pursuant to Public Resources Code Section PRC 32555 (c) The Conservancy shall provide for the public's enjoyment, and enhance the recreational and educational experience on public lands in the territory in a manner consistent with the protection of lands and resources in the area; and

WHEREAS, pursuant to Public Resources Code Section PRC 32565.5 (a) The Conservancy shall develop and coordinate an integrated program of resource stewardship so that the entire Baldwin Hills area is managed for optimum recreational and natural resource values based upon the needs and desires of the surrounding community; and

WHEREAS, The California Drought, Water, Parks, Climate, Coastal Protection, and Outdoor Access for All Act of 2018 (Proposition 68) is codified as Division 45 (commencing with Section 80000) and Sections 5096.611 and 75089.5 of the Public Resources Code and Section 79772.5 of the Water Code.; and

WHEREAS, Section 80110(b)(1) of the Public Resources Code allocates six million dollars (\$6,000,000) to the Baldwin Hills Conservancy in accordance with the governing statutes and specified purposes; and

WHEREAS, the Baldwin Hills Conservancy has the authority, pursuant to Public Resources Code Section 32569 (a), to make grants to non-profit 501c (3) organizations to further the purposes of the its division; and

WHEREAS, Climate Resolve is a non-profit 501c (3) organization with experience in project development and planning; and

WHEREAS, Climate Resolve has submitted an application for a BHC Proposition 68 local assistance grant for the COMMUNITY RESILIENCE AND ACCESS PLAN FOR BALDWIN HILLS CONSERVANCY; and

WHEREAS, The Baldwin Hills Conservancy Governing Board adopted Resolution 18-03 approving the BHC Proposition 68 Grant Program Guidelines in September 21, 2018; and

WHEREAS, The Baldwin Hills Conservancy Governing Board adopted Resolution 20-02 approving Revisions to the BHC Proposition 68 Application and Grant Guidelines in March 27, 2020; and

WHEREAS, under Public Resources Code 15333 this action is exempt from the environmental impact requirements of the California Environmental Quality Act (CEQA).

NOW, THEREFORE BE IT RESOLVED, That the Baldwin Hills Conservancy hereby:

1. AUTHORIZES A GRANT IN AN AMOUNT NOT TO EXCEED \$200,000 OF BHC PROPOSITION 68 FUNDS TO CLIMATE RESOLVE FOR THE COMMUNITY RESILIENCE AND ACCESS PLAN FOR BALDWIN HILLS CONSERVANCY.
2. ADOPTS THE STAFF REPORT AND RECOMMENDATIONS DATED JULY 17, 2020 FOR THIS ITEM.
3. APPOINTS THE EXECUTIVE OFFICER, AS AGENT TO CONDUCT ALL NEGOTIATIONS, EXECUTE AND SUBMIT ALL DOCUMENTS INCLUDING, BUT NOT LIMITED TO AGREEMENTS, PAYMENT REQUESTS, AND CERTIFICATIONS WHICH MAY BE NECESSARY FOR THE COMPLETION OF THE AFOREMENTIONED PROJECT(S).

Passed and Adopted by the Board of the
BALDWIN HILLS CONSERVANCY

on _____ 2020.

Keshia Sexton
Chair

ATTEST: _____
David Edsall
Deputy Attorney General

**State of California — Natural Resources Agency
BALDWIN HILLS CONSERVANCY**

GRANT APPLICATION FORM

PROJECT NAME	GRANT AMOUNT REQUESTED	
Community Resilience and Access Plan for the Baldwin Hills Conservancy	\$200,000	
APPLICANT (Org. Name and Address)	TOTAL PROJECT AMOUNT	
Climate Resolve 525 S Hewitt St Los Angeles, CA 90013	\$230,640.32	
APPLICANT'S AUTHORIZED REPRESENTATIVE (Name, Title, Phone)		
Woodrow C. Covington, Grants and Proposals Manager 213-634-3790		
PROJECT ADDRESS (Including Cross-Street)		
5120 Goldleaf Cir #290 Los Angeles, CA 90056		
COUNTY	SENATE DISTRICT	ASSEMBLY DISTRICT
Los Angeles	30	54
PERSON W/ DAY-TO-DAY RESPONSIBILITY FOR PROJECT (Name, Title, E-mail, Phone)		
Natalie Hernandez, Associate Director, Climate Planning and Resilience nhernandez@climateresolve.org ; 213-634-3790		
BRIEF DESCRIPTION OF PROJECT		
Climate Resolve and its team proposes to create a community resilience and access plan to help guide the Baldwin Hills Conservancy Parklands in increasing the resilience of the park space and its surrounding communities. The plan will provide a pathway to increasing community access, as well as improving access from disadvantaged communities.		

TASK / MILESTONE	COST ESTIMATE	COMPLETION DATE
1. Project Management	\$60,945.31	Months 1-18
2. Research	\$13,104.24	Months 1-3
3. Community Risk Analysis and Resilience Strategies	\$23,872.54	Months 3-16
4. Community Access	\$18,661.70	Months 3-16
5. Stakeholder Engagement	\$95,379.52	Months 1-16
6. Community Resilience and Access Plan Consolidation	\$18,677.01	Months 15-18

I certify that the information contained in this project application form, including required attachments, is accurate.

NAME: Woodrow C. Covington

SIGNATURE:
6/28/2020

W.C.C.

DATE:

GRANT APPLICATION FOR BHC PROP 68 FUNDS

Proposition 68: California Drought, Water, Parks, Climate, Coastal Protection, and
Outdoor Access for All Act of 2018

Application Checklist. All applications must be provided in 12-point font. The grant application must include the following:

		INCLUDED
1.	Cover page (no more than 1 page)	X
2.	Table of Contents with corresponding page numbers.	X
3.	A completed Application Checklist.	X
4.	A completed grant application form. See P68 Grant Application on BHC website.	X
5.	Identify only one (1) of the purposes of Chapter 8 of Proposition 68 Bond Law are achieved by the project and by which your application will be evaluated. <input type="checkbox"/> > Resource Protection and Restoration <input type="checkbox"/> > Vegetation Management and Fire Safety <input type="checkbox"/> > Visitor Serving Development and Improvement X > Community Access, Education and Interpretation Projects See Guidelines Section 4.3, Item 5.	X
6.	A detailed scope of work, including a list of specific tasks, a detailed budget, and a timeline for project implementation (including an estimated completion date for each task)	X
7.	Any preliminary project plans (i.e. drawings, conceptional or construction) as required	N/A
8.	A detailed description of the need and urgency for the grant	X
9.	A detailed description of how the project will provide multi-benefit ecosystem, water quality, water supply, and watershed protection and public benefits	X
10.	A detailed description of how the project achieves one or more of the Purposes of Proposition 68. See Guidelines Section 4.3, Item 5.	X

11.	A detailed description of how the project helps meet the State's greenhouse gas emissions reductions targets, including a quantification of the metric tons of CO2 or CO2e removed or avoided, and an explanation of the methodology used to quantify this figure. See Guidelines: Section 2, Item 2.4 and Section 5 Item 2.5 and Section 6 Item 6.0 and EXECUTIVE ORDER B-30-15 (Brown).	X
12.	A detailed description of how the project will promote and implement other relevant regional and state plans and policies. See Guidelines: Section 2	X
13.	Indicate whether the project will have matching funds from private, local, or federal sources, and if so, to what extent (Include dollar amount.)	X
14.	Indicate whether the project will benefit a disadvantaged community (Use the State Parks Community Fact Finder tool http://www.parksforcalifornia.org/communities to determine Median Household Income)	X
15.	A detailed description of any new or innovative technology or practices that will be applied to the project;	X
16.	A detailed method for monitoring and reporting on the progress and effectiveness of the project during and after project implementation;	X
17.	A description of how the scope of work will further the Conservancy's strategic objectives; See Guidelines, Section 2.2. Strategic Objectives.	X
18.	A description of how the scope of work will protect or enhance Ballona Creek (if applicable).	N/A
19.	Completed CEQA document. See Attachment 1.	X
20.	For Nonprofit Organizations, please submit completed Nonprofit Organization Pre-Award Questionnaire. See Attachment 2.	X
21.	Conservancy's procedures require the Applicant to certify, by resolution, the approval of the application before submission of said application(s) to the Conservancy. See Attachment 3.	X
22.	A completed payee data record (STD. 204) See <u>Payee Data Form (STD. 204)</u> on BHC website.	X
23.	Corps Consultation Review Document (if applicable) See Attachment 4.	N/A

--	--	--

Applications may be submitted electronically or via U.S. Mail.

Electronic: Send one PDF file (10 MB maximum size) to info@bhc.ca.gov. If you are unable to e-mail your application, you may mail or deliver the electronic files on a CD or other common file storage device.

U.S. Mail: The printed documents to
Baldwin Hills Conservancy
Attn: Grant Program Manager
5120 West Goldleaf Circle Drive
Los Angeles, CA 90056.

PROJECT DESCRIPTION

Project scope is the part of project planning that involves determining and documenting a list of specific project goals, **deliverables**, features, functions, **tasks**, deadlines, and ultimately costs. In other words, it is what needs to be achieved and the work that must be done to deliver a project.

Describe each of the elements of the project description below with clear, but detailed answers.

1. **Need and urgency for the project.** Describe the specific problems, issues, or un-served needs the project will address. Include a detailed description of how the project will provide multi-benefit ecosystem, water quality, water supply, and watershed protection and public benefits.

Please see attached project narrative.

2. **Goals and objectives.** The goals and objectives should clearly define the expected outcomes and benefits of the project. Include the following:
 - a.) A detailed description of how the project achieves one or more of the purposes of Proposition 68.
 - b.) A detailed description of how the project helps meet the State's greenhouse gas emissions reductions targets, including a quantification of the metric tons of CO₂ or CO₂e removed or avoided, and an explanation of the methodology used to quantify this figure
 - c.) A detailed description of how the project will promote and implement other relevant regional and state plans and policies
 - d.) Indicate whether the project will have matching funds from private, local, or federal sources, and if so, to what extent (Include dollar amount.)

Please see attached project narrative.

3. **Site Description.** Describe the project site or area, including site characteristics that are tied to your project objectives (i.e.: for acquisition of habitat, describe current vegetation assemblages, condition of habitats, known wildlife migration corridors, etc.). When relevant, include ownership and management information.

Please see attached project narrative.

4. **Specific Tasks.** Identify the specific tasks that will be undertaken and the work that will be accomplished for each task.

#	Task Name	Description
1	Project Management	This task relates to the overall planning, management, implementation, and evaluation of this project. Activities include a project kickoff video call meeting, regularly scheduled video calls between the Climate Resolve team and Baldwin Hills Conservancy staff, reporting on activities, and any other duties necessary for the overall success of the project.
2	Research	Climate Resolve and its team will conduct a succinct review of previous plans prepared for the Baldwin Hills Conservancy as well as investigate other resilience plans for similar urban areas and parks.
3	Community Risk Analysis and Resilience Strategies	This analysis aims to consider potential extreme weather and disaster events and uplift the Parklands potential to foster public health preparedness and resilience in the midst of these and other disruptive events.
4	Community Access	Climate Resolve will work with a transportation specialist to focus on key transportation and access barriers that could prevent community members from using the Parklands for its resilience services and programs, and then propose a range of possible solutions to address these barriers.
5	Stakeholder Engagement	Led by SLATE-Z, this community engagement will look at how community members interact with the Parklands and how to increase usage for residents of DACs. This engagement will be critical in informing Tasks 3 and 4, above.
6	Community Resilience and Access Plan Consolidation	Climate Resolve will work with a contracted design specialist to publish an excellent written and visual electronic document that includes analysis, access maps (e.g. for parking, transit routes, and public gates), renderings (e.g. for Resilience Hub and enhanced usage of open space), and community input (e.g. survey results, pictures of site visit, focus groups) to be presented to the Baldwin Hills Conservancy Governing Board and featured on the Baldwin Hills Conservancy website.

Add or delete rows as necessary.

5. **Work Products.** List the specific work products or other deliverables in which the project will result.

Please see attached project narrative.

6. **Measuring Success.** For projects involving restoration, construction or land acquisition, describe the plan for monitoring, evaluating and reporting project effectiveness, and implementing adaptive management strategies if necessary. Identify who will be responsible for funding and implementing ongoing management and monitoring.

Please see attached project narrative.

7. **Project Maps and Graphics.** Provide the following project graphics with your application. Project maps and design plans should be combined into one pdf file with a maximum size of 5 MB. Project photos should be provided in jpg format.
- Regional Map – Clearly identify the project's location in relation to prominent area features and significant natural and recreational resources, including regional trails and protected lands.
 - Site-scale map – Show the location of project elements in relation to natural and man-made features on-site or nearby. Any key features discussed in project description should be shown.
 - Design Plan – Construction projects should include one or more design drawings or graphics indicating the intended site improvements.
 - Site Photos – One or more clear photos of the project site.

Please see attached project narrative.

PRELIMINARY BUDGET AND SCHEDULE

In the budget matrix below, relist the tasks identified in #4 above and for each provide:
 1) the estimated completion date for the task, 2) the estimated cost of the task, and 3)
 the funding sources (applicant, Conservancy, and other) for the task. The table will
 automatically sum the totals for each row and column. To do this, highlight the whole
 table and press the F9 key on your keyboard.

Task Number	Task	Completion Date	Applicant's Funding	Baldwin Hills Conservancy Funds	Other Funds	Total Cost
1.0	Task 1: Project Management		\$10,640.32	\$50,304.99		\$60,945.31
1.1	Kickoff Video Call Meeting + Prep with BHC, Climate Resolve, and Slate-Z	Months 1-18				\$ 0
1.2	Project Team Coordination Emails and Calls (over 18 months)	Months 1-18				\$ 0
1.3	Monthly Project Team & BHC Calls (1 x 18 months)	Months 1-18				\$ 0
2.0	Task 2: Research			\$13,104.24		\$13,104.24
2.1	Literature Review of Existing Plans	Months 1-3				\$ 0
2.2	Existing Climate Data Review	Months 1-3				\$ 0
3.0	Task 3: Community Risk Analysis and Resilience Strategies			\$23,872.54		\$23,872.54
3.1	Public health risk analysis and preparedness strategies	Months 3-16				\$ 0
3.2	Resilience hub analysis and planning	Months 3-16				\$ 0

4.0	Task 4: Community Access			\$23,661.70		\$23,661.70
4.1	Transit, Parking, and Walking Analysis	Months 3-16				
5.0	Task 5: Stakeholder engagement		\$20,000	\$70,379.52		\$90,379.52
5.1	Stakeholder engagement plan	Months 1-3				
5.2	Community focus group meetings (3)	Months 3-16				
5.3	Survey collection and analysis	Months 3-16				
5.4	Site visit and pop up demonstration for focus group members	Month 10				
5.5	Outreach summary document	Month 15				
5.6	Presentation on findings to BHC governing board	Month 16				
6.0	Task 6: Community Resilience and Access Plan Consolidation			\$18,677.01		\$18,677.01
6.1	Research of funding strategies and consolidation of solutions and recommendations into final document	Months 15- 18				
TOTAL			\$30,640.32	\$200,000.00	\$ 0	\$230,640.32

*Please see hourly task allocations and personnel rates in the detailed budget spreadsheet, attached

In Kind Services

In-kind services or contributions include volunteer time and materials, bargain sales, and land donations. Describe and estimate the value of expected in-kind services.

Climate Resolve expects to engage volunteer graduate students from local universities to assist with appropriate tasks; however, we have not included them in the overall budget calculations. We envision that they will help with community outreach, project coordination, and research, and will be managed by the Climate Resolve staff.

ADDITIONAL INFORMATION

Provide clear, concise answers to each question below. Unless otherwise specified, please limit your answer to one concise paragraph. See grant application instructions for more information. For question #4, limit your answer to 1-3 sentences per relevant plan. Most questions should be answered by all applicants, enter "**not applicable**" if a question does not pertain to your project.

1. **Proposition 68 Goals.** Which of the following purposes of Chapter 8 of Proposition 68 are achieved by the project **[check only one (1) that most applies to your project]**:

Purposes of Proposition 68 include:

- ☐ **Resource Protection and Restoration.** The state provides funds which facilitate the protection and restoration of wildlife, habitat, and historical/archaeological resources, including habitat restoration projects.
- ☐ **Vegetation Management and Fire Safety.** The state provides funds which facilitate fire safety and any required or recommended fuel modification zones.
- ☐ **Visitor Serving Development and Improvement.** The state provides funds which provide for enhanced visitation, urban accessibility and safety to open space, parks and greenspace (including signage, restrooms, entrances, parking, trail building or repairs, etc...). This includes new projects to implement statutory requirements to provide better accessibility under the Americans with Disabilities Act (ADA).
- ☒ **Community Access, Education and Interpretation Projects.** The state provides funds which are required to achieve or expand the outreach mission of the Conservancy and provide interpretive programs and materials to substantially enhance knowledge, appreciation, and enjoyment of the natural environment, open space, parklands and waterways.

2. **Consistency with other State Plans:** If the proposed project will help to implement or promote the goals of any of the State Plans listed below, check that plan and specify which goals, objectives, priority actions, etc. will be furthered by the project. Limit your answers to 1-3 sentences per plan.

X CA Climate Adaptation Strategy/Safeguarding California: Reducing Climate Risk Plan

As a resiliency planning document that factors in climate change, we believe this project firmly aligns with the State of California plans described above.

X California Water Action Plan

The plan will describe the projected impacts of climate change, including drought and changing precipitation patterns, and how to make the Baldwin Hills and surrounding communities more resilient to these changes.

3. California's 2017 Climate Change Scoping Plan.

- a. Identify which goals of the California Climate Change Scoping Plan the project will promote or implement.
- b. Identify the climate change/global warming plan(s) and any other regional or plans that apply to the specific project area. For each, list those goals, objectives, priority actions, etc. that the project will promote or implement.

Please see the attached project narrative.

4. Best Scientific Practices. Describe how the project is consistent with best scientific practices where achievable and appropriate.

Please see attached project narrative.

5. New Technology. Does the project employ new or innovative technology or practices? If yes, describe those technologies and/or practices.

Please see attached project narrative.

6. Sustainability. Describe how the project will deliver sustainable outcomes in the long-term.

Please see attached project narrative.

7. Project and Applicant History: Provide a history of the project, and any background information not provided in the project description. Is the project related to any previous or proposed Baldwin Hills Conservancy projects? If so, which ones and how are they related?

Please see attached project narrative.

8. Environmental Review: Projects funded by the Conservancy must be reviewed in accordance with the California Environmental Quality Act ("CEQA"). CEQA does not apply to projects that will not have either a direct or indirect effect on the environment. For all other projects, if the project is statutorily or categorically exempt under CEQA, no further review is necessary. If the proposed project is not exempt, it must be evaluated by a public agency that is issuing a permit, providing funding, or approving the project, to determine whether the activities may have a significant effect on the environment. The evaluation results in a "Negative Declaration (Neg. Dec)," "Mitigated Negative Declaration (MND)," or "Environmental Impact Report."

See CEQA Compliance Certification document in Attachment 1 to this application.

Please select the appropriate answer:

The proposed project....

☒ Is not a project under CEQA. Briefly specify why.

This project will produce a planning document. While the activities prescribed in the resilience plan would have an impact on the environment, this project itself will not.

☐ Is exempt under CEQA. Provide the CEQA exemption number and specify how the project meets the terms of the exemption.

☐ Requires Negative Declaration, MND, or EIR. Specify the lead CEQA agency (the agency preparing the document) and the (expected) completion date. Please note that the Conservancy will need to review and approve any CEQA document and cannot present a project to the Conservancy Board for funding consideration without a completed CEQA document.

- 9. Support:** Obtain letters from the public agencies, identified project partners, park owner/operator non-profit organizations, elected officials and other entities and individuals that will support the project.

Please see the attached letter of support.

- 10. Regional Significance:** Describe the regional significance of the project with respect to recreation (regional trails and parks, staging areas, environmental education facilities, etc.), agricultural resources, and natural resources (including listed species, identified high priority habitat, wildlife corridors, watersheds, and agricultural soils).

Please see the attached project narrative.

- 11. Disadvantaged Communities.** Does the project benefit a disadvantaged or severely disadvantaged community? If yes, specify which community and how it will be benefited by the project.

Disadvantaged Community (DAC) — Census block-groups with a Median House Hold Income (MHHI) less than 80% of the California MHHI. The threshold is derived from American Community Survey 5-year estimates at the block-group geographic level, per the California Public Resources Code (PRC), Section 75005(g).

Severely Disadvantaged Community (SDAC) — Census block-groups with a Median Household Income (MHHI) less than 60% of the California MHHI. The

threshold is derived from American Community Survey 5-year estimates at the block-group geographic level, per the California Public Resources Code (PRC), Section 75005(g).

Use the State Parks Community Fact Finder tool to determine State Median Household Income (MHHI); Go here <http://www.parksforcalifornia.org/communities>

Please see the attached project narrative.

12. Need for Conservancy Funds: What would happen to the project if no funds were available from the Conservancy? What project opportunities or benefits could be lost and why if the project is not implemented in the near future?

While Climate Resolve is willing to contribute more than \$30,000 to this initiative, the organization does not have the resources to fund the entire project. Without Conservancy funds, the Climate Resolve team will not be able to analyze the risks to the park lands and surrounding communities, nor provide recommendations for how to mitigate those risks and increase resilience. In addition, without these funds, community access would remain at its current levels; the Climate Resolve team believes it can increase access, especially from disadvantaged communities.

13. Vulnerability from Climate Change Impacts Other than Sea Level Rise: Using the latest regional scenarios, predictions and trends, describe how the project objectives or project may be vulnerable to impacts (fire, drought, species and habitat loss, etc.) from climate change, other than sea level rise, coastal erosion or flooding. Identify design, siting, or other measures incorporated into the project to reduce these vulnerabilities.

Please see attached project narrative.

14. Greenhouse Gas Emissions/Climate Change: If the proposed project will result in production of greenhouse gas emissions (including construction impacts and vehicle miles travelled as part of a public access component), describe the measures your project includes to reduce, minimize or avoid greenhouse gas emissions through project design, implementation construction, or maintenance. What, if any, are the possible sources or sinks of greenhouse gases for your project, such as carbon sequestration from habitats at the site? If one of the project goals is to sequester carbon (reduce greenhouse gas concentrations), how do you intend to ensure continued long-term sequestration while achieving project objectives? Do you have any plans to seek carbon credits for the carbon sequestration activities on the project site?

As an organization primarily focused on climate change, Climate Resolve is acutely aware of the dangers of greenhouse gas emissions and will take all possible measures to reduce them.

The greenhouse gas emissions from this project will mainly result from vehicle miles traveled. The project team will attempt to reduce these emissions as much as possible by taking public transportation, carpooling, and maximizing the activities undertaken on each necessary trip. For the site visit, the Climate Resolve team has budgeted to take an electric bus the parklands. The project coordination will also be done mostly remotely, using email, video conferencing, and phone meetings to both reduce the greenhouse gas emissions from traveling to in-person meetings as well as reducing the health risks due to the current pandemic. Also, although it will only be described in the plan, the resilience hub will be powered by renewable energy as well.

- 15. Willing Seller:** Projects that involve acquisition of property must involve a willing seller. If your project includes property acquisition, please describe the status and expected conclusion of landowner negotiations.

Not applicable.

- 16. Conservation Corps.** For restoration and ecosystem protection projects, Grantee to include Corps Consultation Review Document (if applicable); Indicate whether the project will use the services of local or state conservation corps **See Attachment 4** to this application.

Not applicable.



525 S. Hewitt St.
Los Angeles, CA 90013

213.634.3790
climateresolve.org

June 30, 2020

Attention: David M. McNeill, Executive Officer
Baldwin Hills Conservancy
900 Wilshire Blvd., Suite. 1700
Los Angeles, CA 90017

Re: Grant Application for Baldwin Hills Conservancy Prop. 68 Funding

Dear Mr. McNeill and Board Members of the Baldwin Hills Conservancy,

Climate Resolve is excited to submit this proposal for the creation of a Community Resilience and Access Plan for the Baldwin Hills Conservancy. Climate Resolve currently leads many resilience projects in Southern California, and looks forward to bringing our unique expertise to this project.

For this proposal, Climate Resolve has teamed up with SLATE-Z for their extensive experience in community outreach and engagement. We believe this team can produce a Community Resilience and Access plan that is holistic in its approach and practical in its solutions.

If you have any questions, please contact our Grants and Proposals Manager, Woodrow Covington, at wcovington@climateresolve.org.

Thank you for your consideration,

A handwritten signature in black ink, reading "Jonathan Parfrey". The signature is written in a cursive, flowing style.

Jonathan Parfrey
Executive Director

Community Resilience and Access Plan for the Baldwin Hills Conservancy



Table of Contents

Overview	3
Urgency	3
Alignment with Proposition 68	3
Alignment with state and regional plans and policies	4
Approach	4
Scope of Proposed Work and Leads - Community Resilience and Access Plan	5
Community-Based Organization Partners	11
Innovation and Technology	13
Work Product	14
Measuring Success	15
Site Description	15
Benefits to Disadvantaged Communities	15

Attachment 1: CEQA Compliance Certification Form (N/A)

Attachment 2: Non-Profit Organization Pre-Award Questionnaire

Attachment 3: Resolution of the Climate Resolve Board of Directors

Attachment 4: Payee Data Form (Std. 204)

Attachment 5: Climate Resolve Audited Financial Statements

Attachment 6: Detailed Budget

Attachment 7: SLATE-Z Letter of Support

Overview

Climate Resolve and its team proposes to create a Community Resilience and Access Plan to help guide the Baldwin Hills Conservancy in increasing the resilience of its Parklands and its benefits to disadvantaged communities (DACs). In addition to promoting resilience of the natural landscape, this planning document will outline steps the Conservancy can take to increase the resilience of human and physical elements - we envision the Parklands as a community resource that can be used during extreme weather and disaster events as well as host a hub and meeting place. This plan will highlight walking, public transportation, and driving transportation options to access resilience services and programming of the Parklands, and we will examine how to increase access to the park, especially from DACs in South LA.

Urgency

Los Angeles, like the rest of California, is experiencing an unprecedented time. The COVID-19 pandemic exposed fissures in LA's social resilience, while protests against police murders of black citizens have brought to light historical and structural racism. The long-term threat of climate change is interrelated with each of these areas; resilience to immediate threats like the pandemic are complementary to efforts to be resilient against the effects of climate change. Moreover, climate change disproportionately affects people of color and DACs. Climate Resolve and its team believes this project can help the Baldwin Hills Conservancy improve resilience in the surrounding community, both to short-term threats like the pandemic and long-term threats like climate change.

Alignment with Proposition 68

Investments in the state's parks, wildlife and ecological areas, trails, and natural resources, and greening urban areas are critically important. This plan will aim to incorporate goals as directed by Proposition 68:

- Help mitigate the effects of climate change, making cities more livable, and protecting California's natural resources for future generations.
- Assist the aging infrastructure of California's state, local, and regional park system by directing infusion of capital to protect this investment.
- Investing in parks, trails, and outdoor infrastructure in disadvantaged areas, particularly for the benefit of South LA, which has historically been under-resourced.

Alignment with the Baldwin Hills Conservancy Strategic Objectives

The Climate Resolve team believes this project is firmly aligned with the strategic objectives of the Baldwin Hills Conservancy. The Baldwin Hills Park Master Plan identifies the following as priority goals:

1. Increase active recreation opportunities for underserved communities
2. Provide for public access and entry way

The Community Resilience and Access Plan would address both of these. By conducting extensive community outreach, especially in disadvantaged communities, the Climate Resolve team can identify barriers to access for these communities, and create strategies to address those barriers. In addition, this outreach process will inform the other resilience-based facets of the project, letting community members identify the risks to their communities as well as inform solutions to address those challenges. This process as a whole will connect community members more strongly to the conservancy parklands. The project will also address the issues around neighborhood access, conducting outreach activities in the surrounding neighborhoods to analyze potential solutions to public access and entry issues.

In addition, this project supports the implementation of the goal of “Expand Education, Public Access, and Resource Stewardship Components in a Manner That Best Serves the Public, Protects Habitat, and Provides Recreational Opportunities”. The following two objectives are most relevant:

1. Expand local government, school district, and nonprofit ventures to provide increased educational and access opportunities
2. Develop long term capital improvement and maintenance plans

This project is, by nature, a nonprofit venture - one that the Climate Resolve team believes will be mutually beneficial. In addition, Climate Resolve and SLATE-Z both have extensive connections in the nonprofit sector, and can identify both future partners for the Baldwin Hills Conservancy as well as potential leaders of the proposed resilience hub. The plan for this resilience hub would constitute a plan for capital improvement and maintenance as well.

Alignment with state and regional plans and policies

The Community Resilience and Access Plan would be aligned with Goals 2, 5, and 6 of the [Our County Sustainability Plan](#) to commit to “Buildings and infrastructure that support human health and resilience,” “Thriving ecosystems, habitats, and biodiversity,” and “Accessible parks, beaches, recreational waters, public lands, and public spaces that create opportunities for respite, recreation, ecological discovery, and cultural activities.”

This plan would also align with several goals of California's 2017 Climate Change Scoping Plan. The Climate Resolve team believes that creating resilience strategies for communities and increasing access to the parklands, especially for members of disadvantaged communities, would support the Scoping Plan's stated goals of making California more resilient and supporting vulnerable communities. These facets of the Community Resilience and Access Plan would also address the public health goals of the state plan, while the proposed resilience hub, detailed below, would advance the goals of clean energy-supported infrastructure. In addition, providing the Baldwin Hills Conservancy with downscaled, projected climate change impacts may enable it to take measures to increase water conservation, aligning with the stated goal of saving water.

The Community Resilience and Access Plan will also align with the forthcoming Los Angeles County Climate Vulnerability Study, which Climate Resolve is currently contracted to develop, as well as the County of Los Angeles and Los Angeles City's emergency operations master plans, procedures, and annexes.

Approach

Climate Resolve envisions a plan to strengthen the resilience of the Baldwin Hills Parklands and the communities they serve. The Urban Sustainability Directors Network defines resilience as "the ability of a community to anticipate, accommodate, and positively adapt to or thrive amidst changing climate conditions or hazard events while concurrently enhancing a community's quality of life." The State of California defines resilience as "the capacity of any entity—an individual, a community, an organization, or a natural system—to prepare for disruptions, to recover from shocks and stresses, and to adapt and grow from a disruptive experience," (California Adaptation Planning Guide, published 2020)

Climate Resolve will focus on strategies that strengthen the physical buildings as well as the natural amenities of the Parklands to increase public health for community residents, taking into account the projected climate impacts for the area. Recognizing that resilience is community-specific, we will also engage community members to describe how resilience currently manifests but also how resilience could be enhanced. We will highlight some of the opportunities for increasing community access to the park and focus on how the Parklands can provide a "hub" space for emergency disaster preparedness and response.

Our engagement will go beyond Baldwin Hills neighborhoods to focus on residents of the South LA DACs east and north of the Parklands. These residents have historically been marginalized and efforts to make improvements for these communities are concurrently happening over the next 18 months which could coincide with the development of the Community Resilience and Access Plan. These efforts include, but are not limited to, [Transformative Climate Communities - South LA Climate Commons](#) and [Metro's Rail to River Corridor Project](#). The core of South LA Climate Commons is ensuring equity and justice-focused investments. Transformation of South LA creates a bi-directional feedback loop which includes increasing access to greater transit options and more linkages to green space such as the Parklands. Additionally, the Metro Rail to River Corridor Project expands routes to public transit and active transportation to align with Metro's overall efforts to increase access to recreational resources in LA County, particularly the Metro 212 line into the Parklands and the connection to the future Crenshaw/LAX line.

Climate Resolve will facilitate the development of the Community Resilience and Access Plan by coupling our own expertise with the trusted leadership of SLATE-Z. SLATE-Z will coordinate the community engagement component of this planning effort and be an advisor to all other aspects of the plan. SLATE-Z is connected to 71 South LA CBOs, elected officials, government agencies, and education institutions.

Our plan will be presented to the Baldwin Hills Conservancy Board and submitted as a designed document to be featured on the Baldwin Hills Conservancy website. To be clear, this is an action plan, not a check-the-box plan, that will offer tangible recommendations for implementation and funding.

Scope of Proposed Work and Leads - Community Resilience and Access Plan

This plan is proposed as an 18-month project and a description of work is outlined below.

Task 1: Project Management

This task relates to the overall planning, management, and implementation of this project. Activities include a project kickoff video call meeting, regularly scheduled video calls between the Climate Resolve team and Baldwin Hills Conservancy staff, reporting on activities, and any other duties necessary for the overall success of the project. The Climate Resolve team will also enlist a three-person panel to monitor the project's progress, make recommendations, and evaluate its success when finished. The

Strategic Advisors will be from academia, government, and nonprofit organizations, and Climate Resolve will report their findings and recommendations to the Baldwin Hills Conservancy throughout the project.

- Kickoff Video Call Meeting
 - *Lead: Climate Resolve*
 - *Timeframe: Month 1*
- Project Team Coordination Emails and Calls
 - *Lead: Climate Resolve*
 - *Timeframe: Ongoing*
- Monthly Project Team and BHC Calls
 - *Lead: Climate Resolve*
 - *Timeframe: Ongoing*
- Establishing and Tracking Metrics of Success
 - *Lead: Climate Resolve with Strategic Advisors*
 - *Timeframe: Ongoing*

Task 2: Research

Climate Resolve and its team will conduct a succinct review of previous plans prepared for the Baldwin Hills Conservancy as well as investigate other resilience plans for similar urban areas and parks. This will be done to minimize redundancy in the new plan and to draw on expertise from past investment in planning efforts. Additionally, Climate Resolve will research local, specific data on the projected impacts of climate change in the Parklands and climate effects on the surrounding communities.

- Literature Review of Existing Plans
 - Plans to be reviewed include [Baldwin Hills Master Plan](#) (2002), Baldwin Hills Linkages and Access Study (2005), [Waste Transfer Station Storm Water Diversion and Rain Garden Project](#), [Baldwin Hills Scenic Overlook Trail and Stormwater Improvement Project](#), and [Biota of the Baldwin Hills: An Ecological Assessment](#)
 - Review of urban parks and climate resilience plans through [Urban Land Institute](#) and [National Recreation and Park Association](#)
 - *Lead: Climate Resolve*
 - *Timeframe: Months 1-3*
- Existing Climate Data and Resilience Review
 - Synthesize existing public studies of what climate and hazard impacts are predicted in the Baldwin Hills Conservancy area including information from [Climate Change in the Los Angeles Region](#) (UCLA), [California's Fourth Climate Change Assessment Los Angeles Region](#)

[Report](#) (state and UCLA), [Cal-Adapt.org](#) (state) and [FEMA's Resilience Analysis and Planning Tool](#) (federal)

- *Lead: Climate Resolve*
- *Timeframe: Months 1-3*

Task 3: Community Risk Analysis and Resilience Strategies

In many ways, the Parklands serves as a resource to its surrounding communities like offering space for individual and group exercise, sustainable agriculture and wellness classes, and a vital ecosystem habitat to interact with plants and animals. This analysis aims to consider potential extreme weather and disaster events and uplift the Parklands potential to foster public health preparedness in the midst of these and other disruptive events. One possible solution is the development of a Resilience Hub.

- **Climate Change and Public Health Preparedness**
 - Examine the [Baldwin Hills Parklands Health Living for All Initiative Project](#) and its applicable information to our plan.
 - Create wildfire prevention tip sheets for surrounding homes like how to create defensible space for properties
 - Provide recommendations on extreme heat mitigation like ways to increase park visitation and cooling centers on hot days, installation of cool roofs and cool pavement in the Parklands, installation of hydration stations at high-contact locations, and increasing tree canopy
 - Assess potential for microgrid energy supply and recycled water in the Parklands
 - Assess vector-borne diseases and the Parkland's vulnerability to be a potential breeding site
 - Assess the Parkland's spaces to host food and water distribution after disasters, the Parklands' spaces to offer healthcare emergency services, possible energy and water retrofits needed, and the potential partnerships needed to be an emergency response center and communicate to the broader community about its services and programming
 - *Lead: Climate Resolve*
 - *Timeframe: Month 3 though Month 16*
- **Resilience Hub and Resilient Spaces**
 - Resilience Hubs are community-serving facilities augmented to support residents, coordinate communication and distribute resources while enhancing quality of life year-round. Hubs can meet a myriad of physical and social goals by utilizing a trusted physical space such as a community center, recreation facility, or multi-family housing building as

well as the surrounding infrastructure such as a vacant lot, community park or local business. They provide an opportunity to effectively work at the nexus of community resilience, emergency management, climate change mitigation, and social equity while also providing opportunities for communities to become more self-determining, socially connected, and successful before, during, and after disruptions. Resilience Hubs are focused on shifting power to the community and are intended to provide services and programming to communities year-round.

- By contrast, Resilient Spaces can include neighborhood and community spaces that are intended to enhance community resilience but are not a full-fledged Resilience Hub. These can include community gardens, community-managed open spaces, community-supported green infrastructure, tool-banks, microgrids or other similar community-serving spaces that are intended to enhance community resilience.
- To determine the role of Baldwin Hills' recreational facilities in aiding resilience will require robust stakeholder engagement, with a special attention to the needs of the community.
- It is further crucial to both identify and secure funding for community organizations, or a consortium of organizations, that can successfully lead and sustain the resilience services.
- As identified above, the resilience services must also be responsive to threats, whether they are environmental or biological or seismic in nature. The plan will address all threats and elevate those functions that are "threat agnostic" and aid the community regardless of the shock or stressor.
- Such "no regrets" strategies may include recommendations on how the parklands can perform services for the community like charging phones, providing up-to-date accurate information, providing water, distributing food, facilitating medical testing and services.
- Research into after-dark lighting for public spaces, to ensure safety and accessibility.
- Research into messaging and signage around the parklands to communicate about public health and climate change preparedness.
- *Lead: Climate Resolve*
- *Timeframe: Month 3 through Month 16*

Task 4: Community Access Analysis and Recommendations

Climate Resolve will work with a transportation specialist to focus on key transportation and access barriers that could prevent community members from using the Parklands

for its resilience services and programs, and then propose a range of possible solutions to address these barriers. Climate Resolve will also analyze potential ways community members can better access the park through pedestrian gates and walkways.

- **Transportation**

- Focus on most frequented ways people arrive at the park: private vehicles, public transportation, and walking
- Analyze park capacity to host visitors, and especially how to reduce private vehicle usage, which is leading to overcrowded parking lots and unsafe parking on streets
- Examine [Metro on Transit to Parks Strategic Plan](#) and the [NextGen Bus Plan](#) for possible connections
- During emergencies access to parklands is essential. Therefore, Climate Resolve will work with stakeholders to make recommendations for the current gate access issues, exploring technological, political, and logistical solutions.
- Provide recommendations on how to maximize the modes of transportation and access to the Parklands
- *Lead: Transportation consultant and Climate Resolve*
- *Timeframe: Month 3 through Month 16*

Task 5: Stakeholder Engagement

Climate Resolve and SLATE-Z believe that engaging community members is critical to the overall success of this project and a long-term relationship with the Baldwin Hills Conservancy. Task 5 will inform the efforts of Tasks 3 and 4 above, as community engagement is needed to assess risks and barriers to access and finding solutions to mitigate those risks and barriers. Exchanging information will not only make community members and others more aware of the features and plans for the park, but will make the Community Resilience and Access Plan stronger by incorporating diverse voices. Led by SLATE-Z, this community engagement will look at how community members interact with the Parklands and how to increase usage for residents of DACs. Designating an entity, or consortium of groups, to run a potential Resilience Hub/Space in the Parklands will also be determined by the stakeholder engagement process.

- Create and finalize a Stakeholder Engagement Plan
 - Outreach strategies to focus on DACs in South LA and build off of existing community planning efforts such as the [Transformative Climate Communities "South LA Climate Commons" plan](#) and [Metro's Rail to River Corridor Project](#) on Slauson Ave

- Outline strategies and logistics for facilitating three community focus groups in South LA and creating an online survey to the broader community
- Outline strategies and logistics for organizing a Parklands site visit for focus group members
- Development of a stakeholder listserv
- *Lead: SLATE-Z and Climate Resolve*
- *Timeframe: Month 1-3*
- Three Community Focus Groups Meetings and Online Survey
 - Capture what people want to see for the future of the Parklands and how Baldwin Hills Conservancy can support the community
 - Analyze how aware community members are of the resources at the Parklands, and give possible recommendations for how the Parkland services and programming can become better known in the surrounding areas
 - Assess if usage of the Parklands is because South LA residents don't have local access to parks in their neighborhood, and what amenities, programs, and services could they benefit from in the Parklands
 - Ask about community access and analyze how residents could travel to the park for resiliency services and programs
 - Examine [LMU CUPRes Baldwin Hills Parklands User Survey](#) for relevant information
 - Get feedback on renderings of "what could the park look like" with climate resilience strategies (e.g. cool pavement, hydration stations)
 - Get feedback on proposed concepts for an enhanced emergency response center and Resilience Hub after an earthquake or power outage.
 - *Lead: SLATE-Z and Climate Resolve*
 - *Timeframe: Ongoing*
- Site Visit and Pop-up Demonstration
 - Bus tour of Parklands for focus group members to get close-up perspectives on various aspects and potential usages of the Parklands
 - Create one pop up activation of "what could the park look like" with demonstration of a pilot project such as cool pavement, cool roof or electronics charging station in the Parklands
 - *Lead: SLATE-Z and Climate Resolve*
 - *Timeframe: Month 10 (approximate)*
- Summary document of outreach conducted, which includes the designation a community organization(s) to oversee the Resilience Hub
 - *Lead: SLATE-Z and Climate Resolve*

- *Timeframe: Month 15*
- Presentation of Final Plan to [Baldwin Hills Conservancy Governing Board](#)
 - *Lead: SLATE-Z and Climate Resolve*
 - *Timeframe: Month 16*

Task 6: Community Access and Resilience Plan Consolidation

Climate Resolve will work with a contracted design specialist to publish an actionable written and visual electronic document that includes analysis, access maps (e.g. for parking, transit routes, and public gates), renderings (e.g. for Resilience Hub and enhanced usage of open space), and community input (e.g. survey results, pictures of site visit, focus groups) to be presented to the Baldwin Hills Conservancy Governing Board and featured on the Baldwin Hills Conservancy website. This document will also include potential funding sources to and practical guidance to support implementation of the recommendations.

- Plan Components
 - Compiled information from Tasks 1-5 as well as final recommendations such as a compiled list of funding resources to implement the strategies presented in the plan and practical guidance on implementation
 - An appendix of visual elements from the plan including design renderings of specific recommendations
 - *Lead: Contracted design specialist and Climate Resolve*
 - *Timeframe: Month 15 through Month 18*

Community-Based Organization Partners

Climate Resolve will contract with SLATE-Z to be the coordinating entity for community engagement since they work in the South LA area and specifically with DACs. [SLATE-Z](#) is a Promise Zone with a 23-member Steering Committee leading a partnership of 71 South LA CBOs, elected officials, government agencies, and education institutions. Led by an Executive Director serving as Vice Chair and environmental justice designee to the California Coastal Commission, SLATE-Z has a core team of 10 with federal and city liaisons. Its fiscal agent, Community Partners, manages an annual portfolio over \$40M. Its lead agency, LA Trade Tech College, provides office and meeting space.

SLATE-Z will: be on project team calls and meetings with Climate Resolve; review the integration of climate research results; design the stakeholder engagement plan; lead coalition and partnership building; deploy outreach strategies; create a survey, analysis, and outreach summary report; contribute to presentation to Baldwin Hills Conservancy Board; and contribute to the overall finalization of the project. SLATE-Z has identified

seven preliminary partners to be involved in the Community Resilience and Access Plan:

- [T.R.U.S.T. South LA](#): Founded in 2005, its mission is to serve as a steward for community-controlled land; to be a catalyst for values-driven, community-serving development; to build awareness and community leadership in issues of housing, transportation and recreation; and to create programs and initiatives that encourage community building and economic opportunity. T.R.U.S.T. South LA leads the Housing and Parks work group for the South LA "Climate Commons" planning grant.
- [Brotherhood Crusade](#): Operating over 50 years as a South LA pillar, Brotherhood Crusade's mission has been to help individuals overcome the barriers preventing the pursuit of success in life. With strong corporate partners, celebrity volunteers, and committed residents, Brotherhood Crusade has been a core foundation in the South LA community. During its time, Brotherhood Crusade has provided human and social services to thousands of South LA residents, serving as a model of collaboration and resource leveraging.
- [LANLT](#): Founded in 2002, LANLT's mission is to grow healthy, safe, and strong communities by creating parks/gardens targeting the lack of green and recreational spaces in LA's park-poor neighborhoods. LANLT has a committed Board, a comprehensive database of hundreds of volunteers, and brings deep experience of building 28 parks and gardens to date.
- [SAJE](#): Since 1996, SAJE has been a force for economic justice in our community focusing on tenant rights, healthy housing, and equitable development. With a staff of 11 and 7 interns, SAJE annually serves 700 residents through Tenants Rights clinics, leadership development, workforce development, and equitable economic mobilization.
- [SCOPE](#): SCOPE's staff of 15 have capacity to launch complex projects reaching almost 30,000 residents per year across five components: Campaigns; Administration; Research and Communications; Organizing; and Training. SCOPE is the convener of the LA Equity Alliance, which also includes CBE, PSR-LA, and Black Worker Center, and has built the capacity and resources for CBOs to carry this project through together.
- [CDTech](#): A nonprofit organization with over 20 years of experience in South LA, CDTech combines grassroots participation with strategic policy understanding. CDTech creates community development and economic development programs that incorporate deep insight into the actual needs, desires, and capabilities of South LA.
- [Community Coalition](#): With its genesis in the early 1990's as a response to health crises devastating the South LA community, Community Coalition has served as

an organizing force for South LA. Community Coalition champions policy solutions that build up the community instead of tearing it apart. This has been the central focus of Community Coalition's approach, elevating the voices of the community to tackle the root causes of poverty, crime, and violence.

- [Community Build](#): Since 1992, in response to civil unrest, Community Build has served the South LA community emphasizing people, partnerships, and promise. Community Build pursues innovative and transformative programs and services throughout South LA and its neighboring communities. The organization seeks to improve existing businesses and build new commercial locations, empowering individuals and building platforms for human capital investment and economic development for a promising future.

Innovation and Technology

- Climate Resolve has in-depth knowledge and unparalleled qualifications to lead a program on resilience.
- Climate Resolve has been a facilitator and advisor on climate change adaptation to the State of California, City of Los Angeles and County of Los Angeles. Climate Resolve helped win the City's landmark cool roofs policy, and then worked with the Bureau of Streets Services to launch its revolutionary cool streets program.
- Climate Resolve also served on the research team of the [Los Angeles Urban Cooling Collaborative](#). Its key study showed how to save the lives of Angelenos during heat waves. The study demonstrated that an enhanced tree canopy and building more reflective surfaces would all but curtail additional warming from climate change for the next 25-60 years, saving many lives.
- Climate Resolve staff members are also appointed members of Governor Newsom's [Technical Advisory Committee](#) on climate resilience and adaptation, sits on the board of the UCLA Luskin Center as well as serving on the advisory committee of Cal-Adapt, the state's database of climate projections, as well as co-chairing Metro's Sustainability Council.
- Resilience centers, Resilience Hubs, and resilient spaces have become the "no-brainer" of the new era — as they can help communities weather the crises of pandemics, heat waves, wildfires, and earthquakes. Governor Newsom's January 2020 budget had set aside \$250 million for resilience centers, and the legislature's proposed bond measures have similarly set aside funding for resilience centers. Due to the COVID crisis, these dollars were unfortunately rescinded in the May revision of the budget. However, their inclusion is a clear

signal that the current administration values climate resilience and resilience centers.

- As the official Southern California representative of the Urban Sustainability Directors Network (USDN) on Resilience Hubs, Climate Resolve will turn to this prestigious organization for counsel and resources.
- Case studies of Resilience Hubs can help refine which services might be most successful on the parklands. Resilience services have been examined by USDN, Kresge Foundation, Bloomberg Associates and Resilient Cities Catalyst, a new effort composed by former Rockefeller Foundation 100 Resilient Cities program staff. Currently, Climate Resolve is a partner with Resilient Cities Catalyst and Conrad N. Hilton Foundation on resilience measures in California.

Work Product

- An actionable written and visual electronic document that includes analysis, access maps (e.g. for parking, transit routes, and public gates), renderings (e.g. for Resilience Hub and enhanced usage of open space), and community input (e.g. survey results, pictures of site visit, focus groups) to be featured on the Baldwin Hills Conservancy website. The document will be designed to guide practical implementation of the recommendations, and will draw connections between the analysis conducted and the solutions presented. The Climate Resolve team wants this document to be practical and useful to the Baldwin Hills Conservancy, and will work with the Conservancy throughout the project to ensure the final product is actionable.
- Presentation of Final Community Resilience and Access Plan to [Baldwin Hills Conservancy Governing Board](#)
- Compilation of community outreach findings, presented to the Baldwin Hills Conservancy Governing Board and included in the final report

Measuring Success

- Number of stakeholders participating in engagement process including survey respondents and focus group members
- Commitments from city/county agency partners to help implement the plan
- Commitments from community-based groups to help implement the plan
- Number of resilience strategies produced that the Baldwin Hills Conservancy finds useful and actionable
- Number of potential funding sources identified for implementation of the plan
- Findings from the panel Strategic Advisors, both over the course of the project and during a final evaluation at its conclusion

- Policies implemented, activities conducted, and funding secured by the Baldwin Hills Conservancy that were recommended by the Climate Resolve team's plan

Site Description

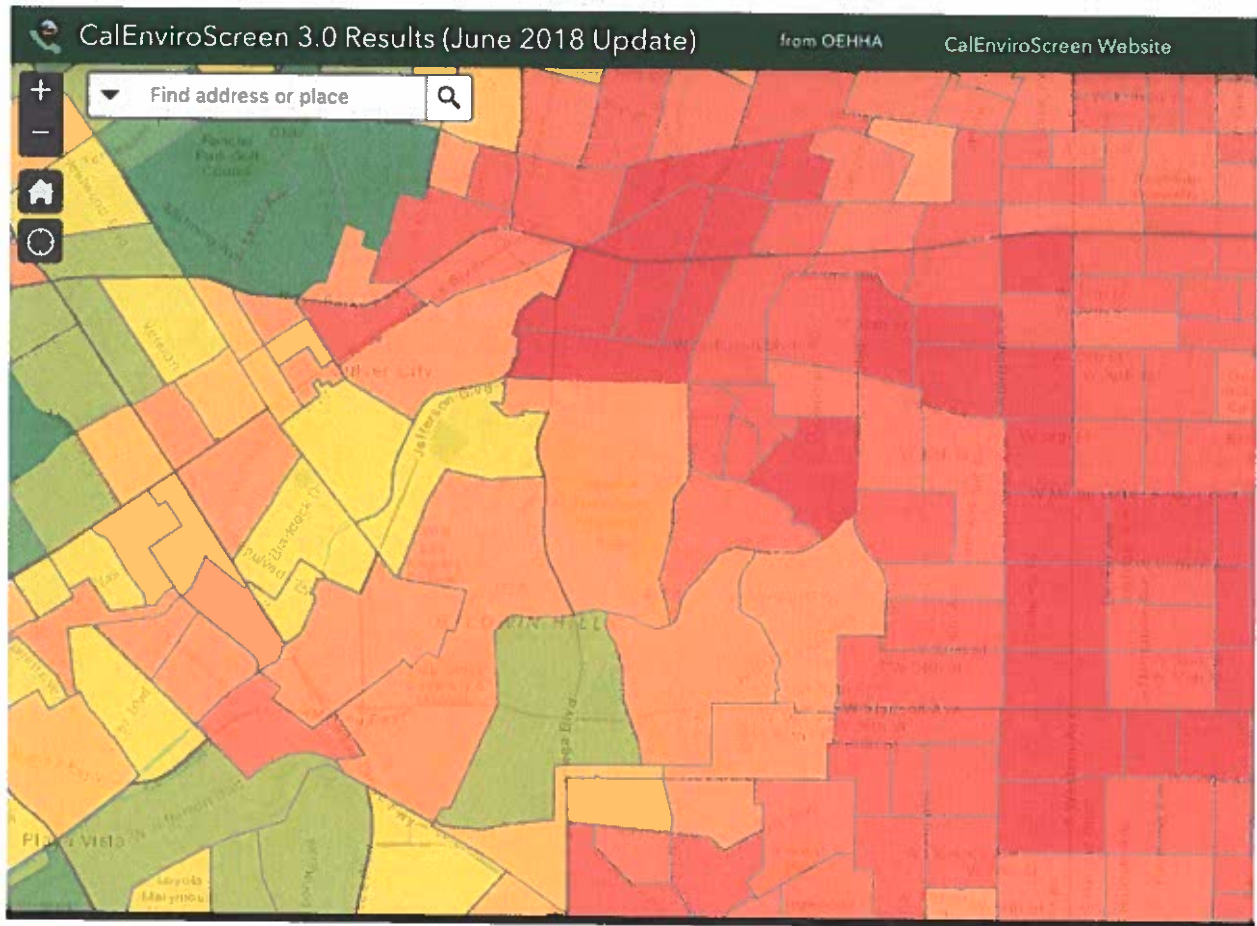
The plan will primarily focus on studying Kenneth Hahn State Recreation Area, Baldwin Hills Scenic Overlook, and Stoneview Nature Center. Other parts of the Parklands will be potentially assessed depending on conversations with Baldwin Hills Conservancy.



Benefits to Disadvantaged Communities

The Community Resilience and Access Plan will primarily focus on engaging populations in South Los Angeles (parts of Council Districts 8, 9, and 10), which include many DACs. The median income ranges from \$31,998 to \$71,675 (determined using the [State Parks Community Fact Finder tool](#)).

Additionally, according to CalEnviroScreen 3.0, there is a huge environmental and social disparity with residents living on the west and southern side (Culver City, Playa Vista, and Ladera Heights) of Baldwin Hills compared to the east side (Leimert Park, Baldwin Village, Crenshaw, and West Adams). This is seen through the screenshot of CalEnviroScreen 3.0 depicting green (less burdened communities) versus red/orange (disproportionately burdened communities). This is primarily the reason the Community Resilience and Access Plan will focus on DACs in South LA.



ATTACHMENT 1 – Compliance Certification Form



CALIFORNIA ENVIRONMENTAL QUALITY ACT (CEQA)
Compliance Certification Form

Grantee/Applicant: Climate Resolve **Project Name:** Community Resilience and Access Plan for Baldwin Hills Conservancy

Project Address: 5120 Goldleaf Cir #290, Los Angeles, CA 90056

When was CEQA analysis completed for this project? Date N/A

What document(s) was filed for this project's CEQA analysis: (check all that apply)

☐ Initial Study ☐ Notice of Exemption ☐ Negative Declaration ☐ Mitigated Negative Declaration

☐ Environmental Impact Report Other: This project consists of a planning document and does not fall under CEQA

Please attach the Notice of Exemption or the Notice of Determination as appropriate.

If these forms were not completed please attach a letter from the Lead Agency explaining why, certifying the project has complied with CEQA and noting the date that the project was approved by the Lead Agency.

Lead Agency Contact Information: N/A

Agency Name: _____ **Contact Person:** _____

Mailing Address: _____

Phone: (_____) _____ **Email:** _____

Certification:

I hereby certify that the Lead Agency listed above has determined that it has complied with the California Environmental Quality Act (CEQA) for the project identified above

and that the project is described in adequate and sufficient detail to allow the project's construction or acquisition.

I certify that the CEQA analysis for this project encompasses all aspects of the work to be completed with grant funds.



Woodrow C. Covington, Grants and Proposals Manager 6/28

Authorized Representative
(Signature)
(Printed Name and Title)

Date

ATTACHMENT 2 – Non-Profit Organization Pre-Award Questionnaire

“Nonprofit organization” means a nonprofit corporation qualified to do business in California and qualified under Section 501(c)(3) of the Internal Revenue Code. All nonprofit organizations must complete this questionnaire and include it in their application.

CONTACT INFO

Organization	Climate Resolve		
Contact Person	Woodrow C. Covington	Email	wcovington@climateresolve.org
Phone	213-634-3790	Fax	N/A

GENERAL INFORMATION

1. Please attach a copy of your most recent financial reports with your response to this questionnaire.
2. Have you had a financial audit within the last three years by an independent auditor?

Yes X No ☐

If yes, please provide a copy of the audit report.

3. Does your organization have appropriate segregation of duties to prevent one individual from processing an entire financial transaction? Yes X No ☐
4. Does your organization have controls to prevent expenditure of funds in excess of what is approved in your project budget? Yes X No ☐
5. Does your organization have a conflict of interest policy? Yes X No ☐
6. How much unrestricted money does your organization raise annually?

Approximately \$1,163,074

7. Is there a Finance Committee of the board of directors, or does the Board make all financial decisions?

There is a Finance Committee.

8. What are the Treasurer's duties?

From the Climate Resolve Board of Directors bylaws: "The Treasurer shall have charge and custody of, and be responsible for, all funds and securities of the Organization; shall keep or cause to be kept complete and accurate accounts of receipts and disbursements of the Organization; shall receive and give receipts for monies due and payable to the Organization from any source whatsoever and deposit all such monies in the name of the Organization in such banks, trust companies, or other depositories as shall be selected in accordance with Section 7.1

of these Bylaws; and, in general, shall perform the duties incident to the office of Treasurer and such other duties as from time to time may be assigned by the Board of Directors. The Treasurer shall, if required by the Board of Directors, give such bond or security for the faithful performance of his duties as the Board may require, for which he shall be reimbursed."

CASH MANAGEMENT

9. Are grant funds accounted for through segregated accounts? Yes X No ☐
10. Are all disbursements properly documented with evidence of receipt of goods or performance of service? Yes X No ☐

PAYROLL

11. Does your organization have a time reporting system developed to determine and explain proper labor and overhead charges billed to the grant? Yes X No ☐
12. Have you developed procedures to ensure fair and competitive contracting? Yes X No ☐
13. Is there an effective system of identifying expenditures for time, travel and purchase of supplies to determine relevancy to individual grant projects? Yes X No ☐

PROPERTY MANAGEMENT

(Complete this section, if State grants will be used to purchase physical assets.)

14. Are detailed records of individual capital assets kept and periodically balanced with the general ledger accounts? Yes ☐ No ☐
15. Are there effective procedures for authorizing and accounting for the disposal of property and equipment? Yes ☐ No ☐

INDIRECT COSTS

16. Does the organization have an established methodology for calculating indirect costs or overhead? Yes X No ☐
17. Is this used consistently for all grants and contracts? Yes X No ☐

COST SHARING

18. Does the organization have a means to determine and document that it has met cost-sharing goals for each project? Yes X No ☐

19. Do your financial records identify the receipt and expenditure of funds separately for each grant or contract? Yes X No ☐

COMPLIANCE

20. Does your organization have a formal system for complying with the payment of prevailing wages? Yes X No ☐
21. Does your organization have a system in place to ensure it does not use contractors who may be suspended or debarred from receiving federal or state contracts? Yes X No ☐

I certify that the above information accurately represents the organization of which I am a representative.

Name and title of person completing questionnaire:

NAME: Woodrow C. Covington	
SIGNATURE:  6/28/2020	DATE:

Attachment 3 – Resolution Template (Prop 68)

RESOLUTION NO. 2

**RESOLUTION OF THE Climate Resolve BOARD OF DIRECTORS
APPROVING THE APPLICATION FOR GRANT FUNDS FROM
THE BALDWIN HILLS CONSERVANCY
FOR PROPOSITION 68 FUNDING FOR the Community Resilience and Access Plan for
the Baldwin Hills Conservancy**

WHEREAS, voters of California passed the California Drought, Water, Parks, Climate, Coastal Protection, and Outdoor Access For All Act of 2018 (Proposition 68) in June of 2018. The State Legislature has appropriated funds to the BHC for capital outlay and local assistance projects within the territory. Funds are to be awarded for resource protection and restoration, vegetation management and fire safety, visitor-serving development and improvements, community access, education and interpretation projects consistent with the statute creating the Baldwin Hills Conservancy (BHC).

WHEREAS, the Baldwin Hills Conservancy has set forth the necessary procedures governing application for grant funds under the Proposition; and

WHEREAS, the Conservancy's procedures require Climate Resolve to certify, by resolution, the approval of the application before submission of said application(s) to the Conservancy; and

WHEREAS, said application contains assurances that Climate Resolve must comply with; and

WHEREAS, Climate Resolve will enter into an Agreement with the Conservancy to provide funds for acquisition and development projects.

NOW, THEREFORE, BE IT RESOLVED THAT THE Climate Resolve Board of Directors HEREBY:

1. Approves the filing of an application with the Baldwin Hills Conservancy for Proposition 68 Funds for the above project; and
2. Certifies that Climate Resolve understands the assurances and certification in the application form; and
3. Certifies that Climate Resolve will be responsible for the operation and maintenance of the project in perpetuity; including, but not limited to land acquisitions, capital improvement projects, and intellectual property-related deliverables (i.e. web-based content)
4. Certifies that Climate Resolve has, or will have, sufficient funds to operate and maintain the project in perpetuity; or has the right to assign maintenance to another agency; and

5.Appoints the Climate Resolve EXECUTIVE DIRECTOR or designee, to conduct all negotiations, and to execute and submit all documents including, but not limited to, applications, agreements, amendments, payment requests and so forth, which may be necessary for the completion of the aforementioned project.

Passed, approved and adopted this 26 day of June, 2020


SIGNATURE: Michael J Swartz

ATTEST: J-M P+ty

PAYEE DATA RECORD

(Required when receiving payment from the State of California in lieu of IRS W-9 or W-7)

STD 204 (Rev. 4/2017)

1	INSTRUCTIONS: Type or print the information. Complete all information on this form. Sign, date, and return to the state agency (department/office) address shown in Box 6. Prompt return of this fully completed form will prevent delays when processing payments. Information provided in this form will be used by California state agencies to prepare Information Returns (Form 1099). See next page for more information and Privacy Statement. NOTE: Governmental entities, i.e. federal, state, and local (including school districts), are not required to submit this form.																		
2	PAYEE'S LEGAL BUSINESS NAME (As shown on your income tax return) Climate Resolve																		
	SOLE PROPRIETOR OR INDIVIDUAL- ENTER NAME AS SHOWN ON SSN (Last, First, M.I.)						E-MAIL ADDRESS												
							ajackson@climateresolve.org												
	MAILING ADDRESS					BUSINESS ADDRESS													
	525 S. Hewitt St.					525 S. Hewitt St.													
	CITY	STATE	ZIP CODE	CITY	STATE	ZIP CODE													
	Los Angeles	CA	90013	Los Angeles	CA	90013													
3	ENTER FEDERAL EMPLOYER IDENTIFICATION NUMBER (FEIN): <table border="1" style="display: inline-table; border-collapse: collapse;"> <tr> <td style="width: 20px; text-align: center;">4</td> <td style="width: 20px; text-align: center;">6</td> <td style="width: 20px; text-align: center;">4</td> <td style="width: 20px; text-align: center;">7</td> <td style="width: 20px; text-align: center;">3</td> <td style="width: 20px; text-align: center;">6</td> <td style="width: 20px; text-align: center;">2</td> <td style="width: 20px; text-align: center;">7</td> <td style="width: 20px; text-align: center;">8</td> </tr> </table>										4	6	4	7	3	6	2	7	8
4	6	4	7	3	6	2	7	8											
PAYEE ENTITY TYPE	<input type="checkbox"/> PARTNERSHIP <input type="checkbox"/> ESTATE OR TRUST																		
CHECK ONE BOX ONLY	CORPORATION: <input type="radio"/> MEDICAL (e.g., dentistry, psychotherapy, chiropractic, etc.) <input type="radio"/> LEGAL (e.g., attorney services) <input checked="" type="radio"/> EXEMPT (nonprofit) <input type="radio"/> ALL OTHERS																		
	<input type="checkbox"/> SOLE PROPRIETOR OR INDIVIDUAL <table border="1" style="display: inline-table; border-collapse: collapse;"> <tr> <td style="width: 20px; text-align: center;"> </td> <td style="width: 20px; text-align: center;"> </td> <td style="width: 20px; text-align: center;"> </td> <td style="width: 20px; text-align: center;"> </td> <td style="width: 20px; text-align: center;"> </td> <td style="width: 20px; text-align: center;"> </td> <td style="width: 20px; text-align: center;"> </td> <td style="width: 20px; text-align: center;"> </td> <td style="width: 20px; text-align: center;"> </td> </tr> </table>																		
	Enter social security number (SSN) or Individual taxpayer identification number (ITIN) <small>(SSN required by authority of California Revenue and Tax Code sections 18646 and 18661)</small>																		
4	<input checked="" type="checkbox"/> CALIFORNIA RESIDENT - Qualified to do business in California or maintains a permanent place of business in California. <input type="checkbox"/> CALIFORNIA NON RESIDENT (see next page for more information) - Payments to nonresidents for services may be subject to state income tax withholding. <input type="radio"/> No services performed in California. <input type="radio"/> Copy of Franchise Tax Board waiver of state withholding attached.																		
5	I hereby certify under penalty of perjury that the information provided on this document is true and correct. Should my residency status change, I will promptly notify the state agency below.																		
	AUTHORIZED PAYEE REPRESENTATIVE'S NAME (Type or Print)				TITLE			TELEPHONE (include area code)											
	Alexandra Jackson				Administrative Manager			213 - 634 -3790											
	SIGNATURE				DATE			E-MAIL ADDRESS											
					9/25/18			ajackson@climateresolve.org											
6	Please return completed form to:																		
	DEPARTMENT/OFFICE					UNIT/SECTION													
	MAILING ADDRESS					TELEPHONE (include area code)			FAX										
	CITY	STATE	ZIP CODE	E-MAIL ADDRESS															

PAYEE DATA RECORD

(Required when receiving payment from the State of California in lieu of IRS W-9 or W-7)

STD 204 (Rev. 4/2017)

1	<p>Requirement to Complete the Payee Data Record, STD 204</p> <p>A completed Payee Data Record, STD 204 form, is required for all payees (non-governmental entities or individuals) entering into a transaction that may lead to a payment from the state. Each state agency requires a completed, signed, and dated STD 204 on file; therefore, it is possible for you to receive this form from multiple state agencies with which you do business.</p> <p>Payees who do not wish to complete the STD 204 may elect not to do business with the state. If the payee does not complete the STD 204 and the required payee data is not otherwise provided, payment may be reduced for federal and state backup withholding. Amounts reported on Information Returns (Form 1099) are in accordance with the Internal Revenue Code (IRC) and the California Revenue and Taxation Code (R&TC).</p>
2	<p>Enter the payee's legal business name. The name must match the name on the payee's tax return as filed with the federal Internal Revenue Service. Sole proprietorships must also include the owner's full name. An individual must list his/her full name as shown on the SSN or as entered on the W-7 form for ITIN.</p> <p>The mailing address should be the address at which the payee chooses to receive correspondence (i.e. 1099 form) and payments. The business address is the address of the business' physical location; do not enter the payment address or lock box information here.</p>
3	<p>Check only one box that corresponds to the payee business type. Corporations must check the box that identifies the type of corporation.</p> <p>The State of California requires that all parties entering into business transactions that may lead to payment(s) from the state provide their Taxpayer Identification Number (TIN). The TIN is required by the R&TC sections 18646 and 18661 to facilitate tax compliance enforcement activities and the preparation of Form 1099 and other information returns as required by the IRC section 6109(a) and R&TC section 18662 and its regulations.</p> <p>Payees must provide one of the following TINs on this form: social security number (SSN), individual taxpayer identification number (ITIN), or federal employer identification number (FEIN). The TIN for sole proprietorships and individuals is the SSN or ITIN. Only partnerships, estates, trusts, and corporations will enter their FEIN.</p>
4	<p>Are you a California resident or nonresident?</p> <p>A corporation will be defined as a "resident" if it has a permanent place of business in California or is qualified through the Secretary of State to do business in California.</p> <p>A partnership is considered a resident partnership if it has a permanent place of business in California. An estate is a resident if the decedent was a California resident at time of death. A trust is a resident if at least one trustee is a California resident.</p> <p>For individuals and sole proprietors, the term "resident" includes every individual who is in California for other than a temporary or transitory purpose and any individual domiciled in California who is absent for a temporary or transitory purpose. Generally, an individual who comes to California for a purpose that will extend over a long or indefinite period will be considered a resident. However, an individual who comes to perform a particular contract of short duration will be considered a nonresident.</p> <p>Payments to all nonresidents may be subject to withholding. Nonresident payees performing services in California or receiving rent, lease, or royalty payments from property (real or personal) located in California will have 7% of their total payments withheld for state income taxes. However, no withholding is required if total payments to the payee are \$1,500 or less for the calendar year.</p> <p>For information on Nonresident Withholding, contact the Franchise Tax Board at the numbers listed below:</p> <p>Withholding Services and Compliance Section: 1-888-792-4900 E-mail address: wscs.gen@ftb.ca.gov For hearing impaired with TDD, call: 1-800-822-6268 Website: www.ftb.ca.gov</p>
5	Provide the name, title, email address, signature, and telephone number of the individual completing this form. Provide the date the form was completed.
6	This section must be completed by the state agency requesting the STD 204.

Privacy Statement

Section 7(b) of the Privacy Act of 1974 (Public Law 93-579) requires that any federal, state, or local governmental agency, which requests an individual to disclose their social security account number, shall inform that individual whether that disclosure is mandatory or voluntary, by which statutory or other authority such number is solicited, and what uses will be made of it.

It is mandatory to furnish the information requested. Federal law requires that payment for which the requested information is not provided is subject to federal backup withholding and state law imposes noncompliance penalties of up to \$20,000.

You have the right to access records containing your personal information, such as your SSN. To exercise that right, please contact the business services unit or the accounts payable unit of the state agency(ies) with which you transact that business.

All questions should be referred to the requesting state agency listed on the bottom front of this form.



Climate Resolve
Audited Financial Statements
As of and for the Year Ended June 30, 2019
with Report of Independent Auditors



Climate Resolve
Audited Financial Statements
As of and for the Year Ended June 30, 2019
with Report of Independent Auditors

	<u>PAGE</u>
REPORT OF INDEPENDENT AUDITORS	1
FINANCIAL STATEMENTS	
Statement of Financial Position	3
Statement of Activities	4
Statement of Functional Expenses	5
Statement of Cash Flows	6
Notes to Financial Statements	7

Report of Independent Auditors

Board of Directors Climate Resolve

Report on the Financial Statements

We have audited the accompanying financial statements of Climate Resolve (the Organization), a nonprofit organization, which comprise the statement of financial position as of June 30, 2019, the related statement of activities, functional expenses, and cash flows for the year then ended, and the related notes to the financial statements.

Management's Responsibility for the Financial Statements

Management is responsible for the preparation and fair presentation of these financial statements in accordance with accounting principles generally accepted in the United States of America; this includes the design, implementation, and maintenance of internal control relevant to the preparation and fair presentation of financial statements that are free from material misstatement, whether due to fraud or error.

Auditors' Responsibility

Our responsibility is to express an opinion on these financial statements based on our audit. We conducted our audit in accordance with auditing standards generally accepted in the United States of America. Those standards require that we plan and perform the audit to obtain reasonable assurance about whether the financial statements are free from material misstatement.

An audit involves performing procedures to obtain audit evidence about the amounts and disclosures in the financial statements. The procedures selected depend on the auditor's judgment, including the assessment of the risks of material misstatement of the financial statements, whether due to fraud or error. In making those risk assessments, the auditor considers internal control relevant to the entity's preparation and fair presentation of the financial statements in order to design audit procedures that are appropriate in the circumstances, but not for the purpose of expressing an opinion on the effectiveness of the entity's internal control. Accordingly, we express no such opinion. An audit also includes evaluating the appropriateness of accounting policies used and the reasonableness of significant accounting estimates made by management, as well as evaluating the overall presentation of the financial statements.

We believe that the audit evidence we have obtained is sufficient and appropriate to provide a basis for our audit opinion.

**Opinion**

In our opinion, the financial statements referred to above present fairly, in all material respects, the financial position of Climate Resolve as of June 30, 2019, and the changes in its net assets and its cash flows for the year then ended in accordance with accounting principles generally accepted in the United States of America.

Emphasis of Matter***Adoption of New Accounting Pronouncement***

As discussed in Note 2 to the financial statements, the Organization adopted new accounting standards, FASB ASU 2016-14, Not-for-Profit Entities (Topic 958) - *Presentation of Financial Statements of Not-for-Profit Entities*. Our opinion is not modified with respect to this matter.

A handwritten signature in black ink that reads "Vaguez & Company LLP". The signature is written in a cursive, flowing style.

Glendale, California
February 5, 2020

Climate Resolve
Statement of Financial Position
June 30, 2019

ASSETS

Cash and cash equivalents	\$ 128,772
Accounts receivable	194,535
Prepaid expenses	<u>9,439</u>
Total assets	\$ <u>332,746</u>

LIABILITIES AND NET ASSETS

Liabilities

Accounts payable and accrued expenses	\$ <u>95,755</u>
---------------------------------------	------------------

Net assets

Without donor restrictions	(10,851)
With donor restrictions	<u>247,842</u>
Total net assets	<u>236,991</u>

Total liabilities and net assets	\$ <u>332,746</u>
---	--------------------------

See notes to financial statements.

Climate Resolve
Statement of Activities
Year ended June 30, 2019

	<u>Without Donor Restrictions</u>	<u>With Donor Restrictions</u>	<u>Total</u>
Revenues and other support			
Contributions	\$ 323,963	\$ -	\$ 323,963
Sponsorship and events (net of direct benefit to donors of \$47,867)	131,787	-	131,787
Grant revenues	14,275	381,250	395,525
Contract revenues	555,088	-	555,088
Other revenues	4,553	-	4,553
Net assets released from restrictions	133,408	(133,408)	-
Total revenues and other support	<u>1,163,074</u>	<u>247,842</u>	<u>1,410,916</u>
Expenses			
Program services	1,132,708	-	1,132,708
Management and general	159,138	-	159,138
Fundraising	79,621	-	79,621
Total expenses	<u>1,371,467</u>	<u>-</u>	<u>1,371,467</u>
Change in net assets	(208,393)	247,842	39,449
Net assets at beginning of year	<u>197,542</u>	<u>-</u>	<u>197,542</u>
Net assets at end of year	<u>\$ (10,851)</u>	<u>\$ 247,842</u>	<u>\$ 236,991</u>

See notes to financial statements.

Climate Resolve
Statement of Functional Expenses
Year ended June 30, 2019

	Program Services	Management and General	Fundraising	Total
Salaries	\$ 498,795	\$ 55,422	\$ 16,652	\$ 570,869
Payroll taxes and employee benefits	106,432	11,826	8,736	126,994
Total personnel expenses	605,227	67,248	25,388	697,863
Contract services	396,638	50,273	40,655	487,566
Dues and subscriptions	28,617	4,293	3,002	35,912
Facilities and equipment	13,369	1,721	52	15,142
Insurance	-	10,269	-	10,269
Miscellaneous	-	8,145	-	8,145
Office rent	33,250	4,156	4,156	41,562
Printing and mailing	3,432	508	235	4,175
Staff development	7,233	3,478	3,225	13,936
Supplies	17,417	4,784	42	22,243
Telephone and internet	5,264	1,053	263	6,580
Travel, meetings and conferences	22,261	3,210	2,603	28,074
Total expenses	\$ 1,132,708	\$ 159,138	\$ 79,621	\$ 1,371,467

See notes to financial statements.

Climate Resolve
Statement of Cash Flows
Year ended June 30, 2019

Cash flows from operating activities

Change in net assets	\$ 39,449
Adjustments to reconcile changes in net assets to net cash provided by operating activities:	
Changes in operating assets and liabilities:	
Accounts receivable	(73,018)
Prepaid expenses	1,149
Accounts payable and accrued expenses	33,577
Net cash provided by operating activities	<u>1,157</u>

Cash and cash equivalents, beginning of year	<u>127,615</u>
---	----------------

Cash and cash equivalents, end of year	<u>\$ 128,772</u>
---	-------------------

See notes to financial statements.

NOTE 1 DESCRIPTION OF THE ORGANIZATION

Climate Resolve (the Organization) is a non-profit tax exempt 501(c)(3), established in 2015, that is dedicated to creating real, practical solutions to meet the climate challenge while building a better city for Angelenos.

The Organization was originally formed in 2010 utilizing the fiscal sponsorship of Community Partners, a California 501(c)(3) charitable corporation that gives unincorporated groups with aligned missions a tax-exempt home. As a sponsored project of Community Partners, the Organization retained programmatic autonomy and was responsible for its own fundraising. The Organization received tax exempt status in September 2014 and soon after began the process of transitioning operations from Community Partners. Effective July 1, 2015, Community Partners granted the Organization all rights, consisting of the cash balance in that fund.

The mission of the Organization is to make Southern California more livable and prosperous today, and for generations to come, by inspiring people at home, at work, and in government to reduce greenhouse gas emissions and local air pollution, as well as prepare for climate change impacts. To achieve its mission, the Organization promotes practical climate solutions for Southern California; builds collaborations to implement regional climate initiatives; develops communication strategies that make local climate impacts relatable to people, and shares its approach as a model for cities and regions across the world to create lasting global change.

The Organization knows that local climate solutions will benefit all Angelenos, including those most affected by climate change impacts, and strives for changes that are ambitious, achievable, and equitable. Through its programs, the Organization works to reduce greenhouse gas emissions; programs like: keep LA cool; find better ways to get around; share and contextualize climate science that affects Southern California; protect our land and resources – and connect Angelenos, policy-makers, and local leaders helping us with climate change mitigation and adaptation efforts.

NOTE 2 SUMMARY OF SIGNIFICANT ACCOUNTING POLICIES

Financial Statement Presentation

The accompanying financial statements of Climate Resolve have been prepared on the accrual basis of accounting in accordance with accounting principles generally accepted in the United States of America (U.S. GAAP) which require the Organization to report information regarding its financial position and activities according to the following net asset classifications:

Net assets without donor restrictions – Net assets that are not subject to donor-imposed restrictions and may be expended for any purpose in performing the primary objectives of the Organization. These net assets may be used at the discretion of the Organization's management and the board of directors.

NOTE 2 SUMMARY OF SIGNIFICANT ACCOUNTING POLICIES (CONTINUED)

Financial Statement Presentation (continued)

Net assets with donor restrictions - Net assets subject to stipulations imposed by donors or grantors. Some donor restrictions are temporary in nature; those restrictions that will be met either by actions of the Organization and/or passage of time. Other donor restrictions are perpetual in nature, whereby the donor has stipulated the funds be maintained in perpetuity.

Donor restricted contributions are reported as increases in net assets with donor restrictions. When a restriction expires, net assets are reclassified from net assets with donor restrictions to net assets without donor restrictions in the statements of activities. Donor restricted contributions whose restrictions are met within the same reporting period as received are reported as contributions without donor restrictions in the accompanying financial statements

Cash and Cash Equivalents

The Organization considers highly liquid investments with a maturity of three months or less when purchased to be cash equivalents.

Concentrations of Credit Risk

Financial instruments which potentially subject the Organization to concentrations of credit risk consist of cash and cash equivalents and receivables. The Organization maintains its cash and cash equivalents at a high-quality financial institution. Accounts at this institution are insured by the Federal Deposit Insurance Corporation (FDIC) up to \$250,000. In the normal course of business, the Organization's cash and cash equivalents do not exceed the FDIC insurance limit. Receivables are due within one year from organizations well-known to the Organization with excellent payment histories. The Organization's management has assessed the credit risk associated with the deposits and receivables held at June 30, 2019 and has determined that an allowance for potential losses due to credit risk is not necessary.

Promises to Give

Unconditional promises to give are reported at net realizable value if, at the time the promise is made, payment is expected to be received in one year or less. Unconditional promises that are expected to be collected in more than one year are reported at fair value initially and at present value in subsequent periods.

Unconditional promises to give are measured using present value techniques that consider historical trends of collection, the donor's overall creditworthiness, the Organization's policies concerning enforcement of promises to give, and market interest rate assumptions. The interest element resulting from amortization of the discount for the time value of money, computed using the effective interest rate method, is reported as contribution revenue.

NOTE 2 SUMMARY OF SIGNIFICANT ACCOUNTING POLICIES (CONTINUED)

Contributions

Contributions received are recorded as net assets without donor restrictions or net assets with donor restrictions, depending on the existence and/or nature of any donor-imposed restrictions. Contributions that are restricted by the donor are reported as an increase in net assets without donor restrictions if the restriction expires in the reporting period in which the contribution is recognized. All other donor restricted contributions are reported as an increase in net assets with donor restrictions, depending on the nature of restriction. When a restriction expires (that is, when a stipulated time restriction ends or purpose restriction is accomplished), net assets with donor restrictions are reclassified to net assets without donor restrictions and reported in the statements of activities as net assets released from restrictions.

Sponsorship and events are recorded as unrestricted revenue in the period the event is held. Related costs that directly benefit the donors are excluded from the statement of functional expenses as they are presented net of revenues from sponsorship and events.

Contributed property and equipment are recorded at fair value at the date of donation. Contributions with donor-imposed stipulations regarding how long the contributed assets must be used are recorded as net assets with donor restrictions; otherwise, the contributions are recorded as net assets without donor restrictions.

Conditional contributions received are recorded as refundable advances and will be recognized as the conditions are met.

Grants and contracts

Revenue from cost-reimbursable grants and contracts is recorded to the extent of expenses incurred applicable to the grant or contract. Any difference between expenses incurred and the total funds received (not to exceed the grant or contract maximum) is recorded as a receivable or an advance, whichever is applicable. Revenue from other grants are recognized on an accrual basis as earned according to the provisions of the grant.

In-Kind Donations

The Organization records contributed rent, goods, and services at fair value at the date of the contribution. Contributed services are recognized if they (a) create or enhance nonfinancial assets, or (b) require specialized skills that are provided by individuals possessing those skills and would typically need to be purchased if not provided by donation. There were no in-kind donations for the year ended June 30, 2019.

Functional Expenses

The costs of providing the various program and supporting services have been summarized on a functional basis in the statement of activities. Expenses that can be identified with a specific program are allocated directly to the function benefited. Certain costs have been allocated between the program services and supporting services benefited. Such allocation are determined by management on an equitable basis.

NOTE 2 SUMMARY OF SIGNIFICANT ACCOUNTING POLICIES (CONTINUED)

Functional Expenses (continued)

The Organization allocates salaries, employee benefits, rent, telephone and internet expenses using time and effort method and allocates all other significant expenses based on actual usage.

Use of Estimates

The preparation of the financial statements in accordance with generally accepted accounting principles requires management to make estimates and assumptions that affect the reported amounts of assets and liabilities and disclosure of contingent assets and liabilities at the date of the financial statements and the reported amounts of revenues and expenses during the reporting period. Significant items subject to such estimation include allowance for doubtful accounts. Actual results could differ from those estimates.

Income Tax Status

Climate Resolve is exempt from taxation under Internal Revenue Code Section 501(c)(3) and California Revenue and Taxation Code Section 23701(d). Accordingly, no provision for income taxes has been made in these financial statements.

The Organization has evaluated its tax positions and the certainty as to whether those positions will be sustained in the event of any audit by taxing authorities at the federal and state levels. The primary tax positions evaluated relate to the Organization's continued qualification as a tax-exempt organization and whether there are unrelated business income activities that would be taxable. Management has determined that all income tax positions will more likely than not be sustained upon potential audit or examination; therefore, no disclosures of uncertain income tax positions are required.

Climate Resolve's income tax returns remain subject to examination for all tax years ended on or after December 31, 2015 with regard to all tax positions and results reported.

New Accounting Pronouncement

On August 18, 2016, FASB issued ASU 2016-14, Not-for-Profit Entities (Topic 958) – *Presentation of Financial Statements of Not-for-Profit Entities*. The update addresses the complexity and understandability of net asset classification, deficiencies in information about liquidity and availability of resources, and the lack of consistency in the type of information provided about expenses and investment return. The Organization has adjusted the presentation of these statements accordingly.

NOTE 3 FINANCIAL AVAILABILITY AND LIQUIDITY

As of June 30, 2019, the Organization's financial assets available for general expenditures consist of the following:

Financial Assets at year end:

Cash and cash equivalents	\$ 128,772
Accounts receivable	194,535
Total financial assets	<u>323,307</u>

Less amounts not available to be used within one year:

Net assets with donor restriction	247,842
Less net assets with purpose restrictions to be met in less than a year	<u>(246,309)</u>
	1,533

Financial assets available to meet general expenditures over the next twelve months	<u>\$ 321,774</u>
--	-------------------

In addition to financial assets available to meet general expenditures over the next 12 months, the Organization operates with a balanced budget and anticipates collecting sufficient revenue to cover general expenditures not covered by donor-restricted resources. Refer to the statement of cash flows which identifies the sources and uses of the Organization's cash and shows positive cash generated by operations for fiscal year 2019.

NOTE 4 ACCOUNTS RECEIVABLE

Accounts receivable consists of the following as of June 30, 2019:

Contracts receivable	\$ 172,710
Grants receivable	4,275
Sponsorship and events receivable	17,500
Contribution receivable	50
Total	<u>\$ 194,535</u>

Management believes that the receivables are collectible and that no allowance for doubtful accounts is necessary.

NOTE 5 NET ASSETS WITH DONOR RESTRICTIONS

Net assets with donor restrictions are restricted for the following purposes:

Advanced clean transportation services	\$	155,006
Outreach services to improve energy efficiency and water conservation		22,126
Climate protection and policy adoption services		61,964
San Gabriel mountain conservation services		4,029
Others		4,717
Total	\$	<u>247,842</u>

NOTE 6 CONTINGENCIES

Climate Resolve is involved in a pending litigation arising from the normal course of business. The case is ongoing, and management believes that the Organization will prevail on the case, but expects to incur legal costs of \$60,000 during the next five to six years.

NOTE 7 SUBSEQUENT EVENTS

Management has evaluated events or transactions that occurred subsequent to June 30, 2019 through February 5, 2020, the date the accompanying financial statements were available to be issued, for potential recognition or disclosure in the financial statements and determined no subsequent matters require disclosure or adjustment to the accompanying financial statements.



www.vasquezcpa.com

Vasquez & Company LLP has 50 years of experience in performing audit, accounting & consulting services for all types of nonprofit organizations, for-profit companies, governmental entities and publicly traded companies. Vasquez is a member of the RSM US Alliance. RSM US Alliance provides its members with access to resources of RSM US LLP. RSM US Alliance member firms are separate and independent businesses and legal entities that are responsible for their own acts and omissions, and each are separate and independent from RSM US LLP. RSM US LLP is the U.S. member firm of RSM International, a global network of independent audit, tax, and consulting firms. Members of RSM US Alliance have access to RSM International resources through RSM US LLP but are not member firms of RSM International. Visit rsmus.com/about-us for more information regarding RSM US LLP and RSM International. The RSM™ logo is used under license by RSM US LLP. RSM US Alliance products and services are proprietary to RSM US LLP.

655 N. Central Avenue, Suite 1550 • Glendale, California 91203 • Ph. (213) 873-1700 • Fax (213) 873-1777

Attachment 6

Baldwin Hills Conservancy Community Resilience and Access Plan

Climate Resolve										
Executive Director	Senior Director, Energy and Water Programs	Associate Director, Climate Planning & Resilience Manager	Project Assistant / Graduate GIS & Design Intern	Outreach Program Manager	Grants and Proposals Manager	Director, Energy and Water Programs	Climate Planning & Resilience Coordinator	Total Hours		
58.17	100.00	37.80	28.00	34.38	33.01	40.50	29.50			
BASE HOURLY RATE										
TASKS										
Task 1: Project Management										
	6	6	10	10	6	6	0	54		
	24	24	72	72	24	24	24	336		
	36	36	36	36	18	18	9	225		
Task 2: Research										
	6	6	12	40	12	0	6	82		
	6	6	12	40	12	0	6	82		
Task 3: Community Risk Analysis and Resilience Strategies										
	12	8	12	40	12	0	8	104		
	24	24	12	40	12	0	24	166		
Task 4: Community Access										
	8	0	8	12	0	8	0	44		
Task 5: Stakeholder engagement										
	10	0	12	6	12	0	0	40		
	0	0	9	18	18	0	0	45		
	0	0	2	12	6	0	0	20		

Attachment 6

Baldwin Hills Conservancy Community Resilience and Access Plan

Climate Resolve											
	Executive Director	Senior Director, Energy and Water Programs	Associate Director, Climate Planning & Resilience Manager	Project Assistant / Graduate GIS & Design Intern	Outreach Program Manager	Grants and Proposals Manager	Director, Energy and Water Programs	Climate Planning & Resilience Coordinator			
Site visit and pop up demonstration for focus group members	12	12	12	12	12	12	12	12	12	12	96
Outreach summary document	4	2		4	4	0	0	0	0	0	
Presentation on findings to BHC governing board	4	4		4	4	0	0	0	0	0	20
Task 6: Community Resilience and Access Plan Consolidation											
Research of funding strategies and consolidation of solutions and recommendations into final document	12	6		12	40	12	12	12	12	0	106
Other Direct Costs											
Sub-grant to SLATE-Z: \$5,000 for Task 4, \$69,938 for Task 5	\$74,938										
Task 6 Plan Design and Renderings of what the park could like (e.g. visitor center turned into resilience hub with solar and cool pavement). Assumes \$50 an hour for 200 hours.	\$10,000										
Task 4 Transportation Consultant (parking counts; now/future transit route analysis to the parklands including NextGen Bus Study; access gates; and recommendations). Assumes about \$70 an hour ~200 hours.	\$15,000										
School Buses + Rental Costs for Site Visit	\$5,000										
Strategic Advisors stipend	\$1,500										
Total hours	164	134		229	386	242	72	124	87		
Total base rate	\$9,539.88	\$13,400.00		\$8,656.20	\$10,808.00	\$8,319.96	\$2,376.72	\$5,022.00	\$2,566.50		

Attachment 6

Baldwin Hills Conservancy Community Resilience and Access Plan

Climate Resolve						
	Senior Director, Energy and Water Programs	Associate Director, Climate Planning & Resilience Manager	Project Assistant / Graduate GIS & Design Intern	Outreach Program Manager	Grants and Proposals Manager	Director, Energy and Water Programs
Executive Director						Climate Planning & Resilience Coordinator
Total Hours						
Budget Summary						
Personnel Base	\$60,689.26					
w/fringe	\$73,930.25					
Other Direct Costs	\$106,437.50					
Total (incl. overhead)	\$230,640.32					



Los Angeles Trade Technical College
Office of the President
400 W. Washington Blvd.
Los Angeles, CA 90015

June 30, 2020

David McNeil, Executive Director
Baldwin Hills Conservancy
5120 Goldleaf Circle, Suite 290
Los Angeles, CA 90056

Dear Mr. McNeil,

This letter confirms the South Los Angeles Transit Empowerment Zone (SLATE-Z)'s commitment to Climate Resolve's proposed grant application. We are familiar with the work this organization does for South LA and Los Angeles County, as we have collaborated with Climate Resolve on several projects highlighting resilience and sustainability strategies. Designated a federal Promise Zone in 2016 by HUD and led by Los Angeles Trade Technical College (LATTC), SLATE-Z is a cross-sector partnership of more than 71 organizations dedicated to revitalizing South LA by moving residents to economic opportunity. **Climate Resolve has been a fantastic partner in our work, particularly our Transit Work Group, as we strive for equitable investment in South LA.**

The proposed grant will help highlight existing natural resources accessible to residents in South LA, emphasizing ways to access amenities in the Baldwin Hills Parklands. Broadening the visibility of these resources will have a two-fold impact: (1) igniting interest in natural resources within the South LA community and (2) also laying the foundation for resilience hubs, which would serve as critical resource access points during times of crisis and also central locations for community-building. SLATE-Z is excited to partner on this project as establishing resilience hubs in the Baldwin Hills Parklands could lead to a network of similar hubs in South LA neighborhoods.

Climate Resolve has proven to be on the forefront of major initiatives tying together climate justice and urban renewal with an equity lens. The grant proposal would establish vital resources for the South LA community and highlight the strength of the Promise Zone partnership. We are excited to serve as the lead organization on community outreach for this proposal, especially with the clear ties to our work along the Slauson Avenue corridor. Leveraging our existing projects with this proposal strengthens the cross-sectoral nature of revitalizing South LA by moving residents to economic opportunity. The proposal highlights how sustainability strategies can have innovative links to cross-sectoral initiatives while also uplifting community perspectives.

I commend the work of Climate Resolve and support their grant application. This opportunity not only brings much needed support to South LA but also lays the foundation for expanded projects and partnerships into the future.

Please contact me with any questions you may have at effie@slatez.org, or (213) 763-7265. Thank you in advance for your consideration.

Sincerely,

Effie Turnbull Sanders
Executive Director, South Los Angeles Transit Empowerment Zone

BALDWIN HILLS CONSERVANCY

5120 West Goldleaf Circle, Suite 290
Los Angeles, CA 90056
Phone: (323) 290-5270
www.bhc.ca.gov

Memorandum

To: Governing Board

From: David McNeill, Executive Officer

Date: July 17, 2020

Re: Item 6: 2019-20 Inglewood Oil Field Update - Uduak-Joe Ntuk, Oil and Gas Supervisor, Cal GEM

Recommendation: No Action Required. PowerPoint on CalGEM's summary of the Inglewood Oil Field's active wells, production, past violations, plot plans, and environmental inspection reports for the past three years will be presented.

Background: The Department of Conservation's California Geologic Energy Management Division (CalGEM) has a mission to prioritize protecting public health, safety and the environment in its oversight of the oil, natural gas and geothermal industries, while working to help the State achieve its climate change and clean energy goals. To do that, CalGEM uses science and sound engineering practices to regulate drilling, operation and permanent closure of energy resource wells.

The Inglewood Oil Field (IOF) rests at the center of the Baldwin Hills Parklands and its surrounding communities. Since 1924, 1,600 wells have been drilled within its historical boundaries. Today, the oil field's boundary covers approximately 1,000 acres making it one of the largest contiguous urban oil fields in the United States.

In June of this year, CalGEM concluded an extensive Public Health Rulemaking process to update public health and safety protections for communities near oil and gas production operations. This effort involved receiving public input and consideration of the best available science to inform and strengthen protective requirements in urban oil fields across California. Additionally, in April of 2019, CalGEM revised its [idle well regulations](#) to create far more stringent testing requirements that better protect public safety and the environment from potential threats posed by idle wells. The regulations require idle wells to be tested and, if necessary, repaired or permanently sealed and closed.

These are among the agency's planned efforts to improve long term accountability and manage more environmentally sustainable outcomes as our backyard oil fields age and non-renewable oil resources are exhausted.

BALDWIN HILLS CONSERVANCY

5120 West Goldleaf Circle, Suite 290
Los Angeles, CA 90056
Phone: (323) 290-5270
www.bhc.ca.gov

Memorandum

To: Governing Board

From: David McNeill, Executive Officer

Date: July 17, 2020

Re: Item 7: Baldwin Hills SNAPS Study Update - Carolyn Lozo, Chief, Oil and Gas and GHG Mitigation Branch, California Air Resources Board

Recommendation: No Action Required. PowerPoint of CARB's update on the Baldwin Hills Study of Neighborhood Air near Petroleum Sites (SNAPS). See Attached PPT.

Background: The California Air Resources Board (CARB) is charged with protecting the public from the harmful effects of air pollution and developing programs and actions to fight climate change. From requirement for clean cars and fuels, to adopting innovative solutions to reduce greenhouse gas emissions, California has pioneered a range of effective approaches that have set the standard for effective air and climate programs for the nation, and the world.

Nearly three years ago, CARB launched a program to better characterize air quality in communities near oil and gas operations. The Study of Neighborhood Air near Petroleum Sources (SNAPS) includes limited-term, intensive air quality monitoring with a particular focus on production facilities. This program can also provide valuable information to support the Community Air Protection Program (CAPP), formed pursuant to AB 617.

In March of 2019, the Baldwin Hills area was selected as the second community for the SNAPS program. Candidate communities for monitoring are identified based on their proximity to oil and gas wells, and from public suggestions. Under the program, CARB staff will locate stationary trailers equipped with state-of-the art monitoring technologies in communities for approximately six months to one year to characterize air quality near oil and gas facilities. The trailers are capable of measuring toxic air contaminants (TACs), volatile organic compounds (VOCs), particulate matter (PM), metals, and criteria pollutants. An analysis of available air pollution measurements, local characteristics, public input, and potential partnerships in each candidate community will help to prioritize trailer deployment. Staff will analyze the air quality measurements obtained through stationary and mobile monitoring to characterize exposures to measured pollutants. The Office of Environmental Health Hazard Assessment (OEHHA) will evaluate potential short- and long-term health risks of the detected chemical concentrations.

Real-time air monitoring data will be posted online, and CARB will publish a complete analysis of results in separate reports for each site. Implementation of the above process in the Baldwin Hills area was officially initiated in February of 2020.

Once collected, the Baldwin Hills SNAPS data will be utilized by the Los Angeles County Public Health Department's current research being conducted pursuant to the Health Assessment and Environmental Justice Study for the Baldwin Hills, which is a requirement stipulated by the terms of the Baldwin Hills Community Standards District Overlay Zone Ordinance for the Inglewood Oil Field.

SNAPS Overview and Next Steps for Baldwin Hills, CA

Baldwin Hills Conservancy Board Meeting
July 2020

Overview



- Study air quality in neighborhoods
- Select neighborhoods close to oil and gas extraction facilities
- Characterize cumulative impact from surrounding sources



- Exposure concerns raised by communities
- Aliso Canyon underground natural gas storage leak
- California Council on Science and Technology (CCST) recommendations
- Part of broader CARB effort to understand impacts of oil and gas operations

Program Goals

Characterize air quality
in communities near oil and
gas operations

Identify emission sources as
feasible

Analyze data for
possible health risks

Major Pollutants

Toxic Air Contaminants (TACs)

Criteria Pollutants

Particulate Matter (PM_{2.5})
Carbon Monoxide (CO), Ozone(O₃)

Volatile Organic Compounds (VOCs)

Methane (CH₄)

Hydrogen Sulfide (H₂S)

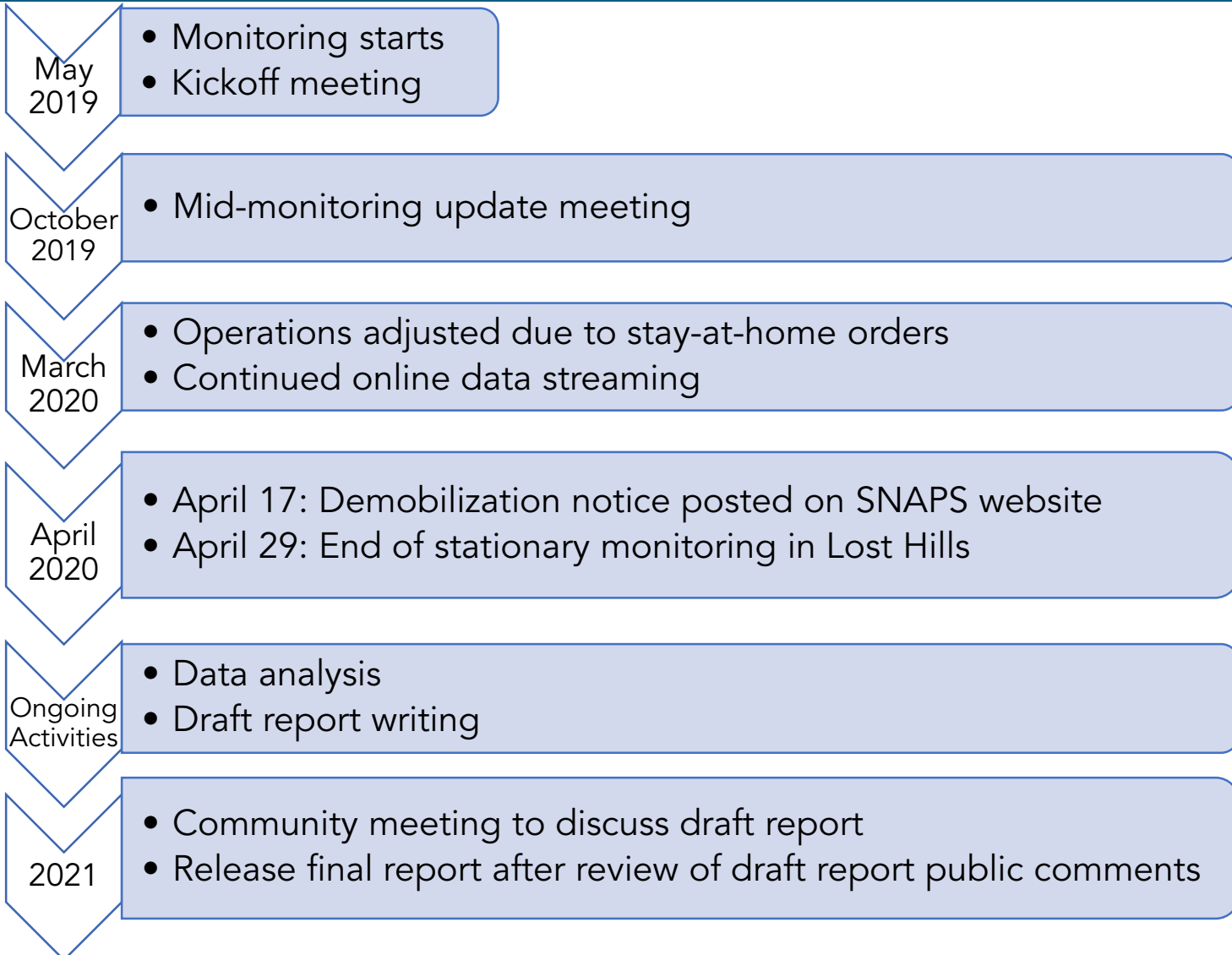
Metals

Glycols

Lost Hills



Lost Hills Timeline



On-site Measurements

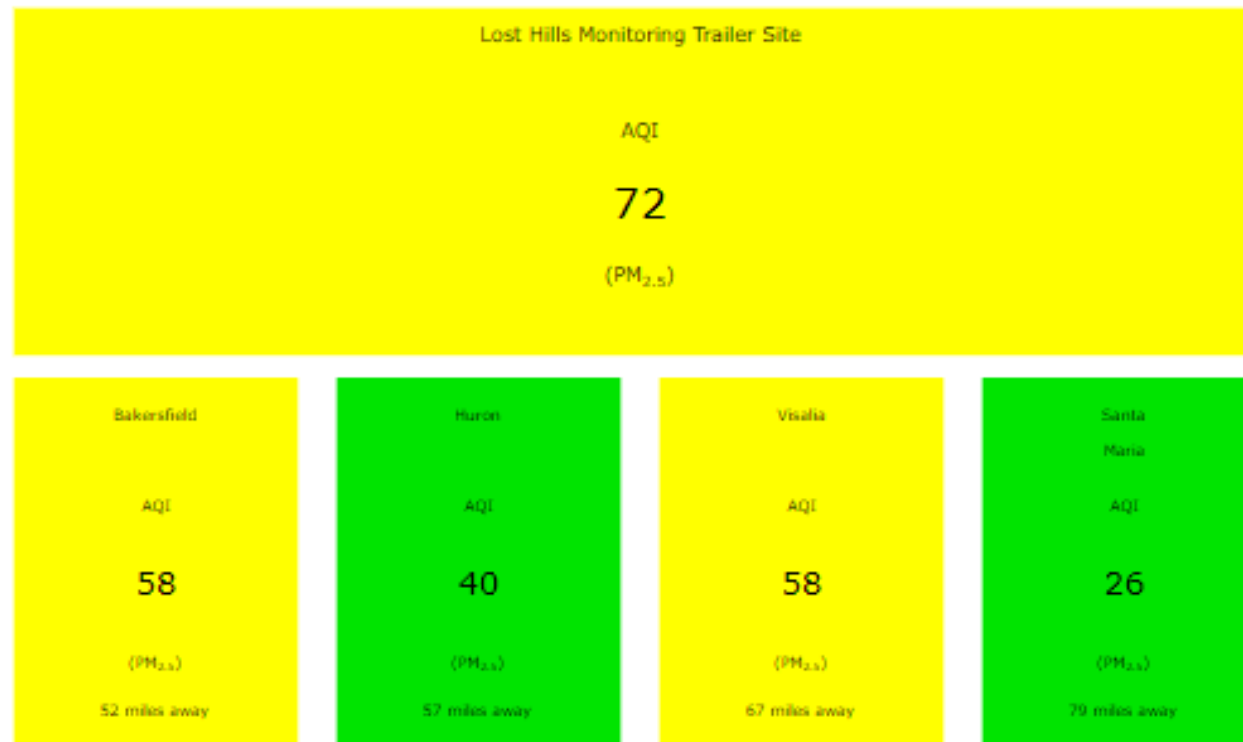


Website Real-time Data Display

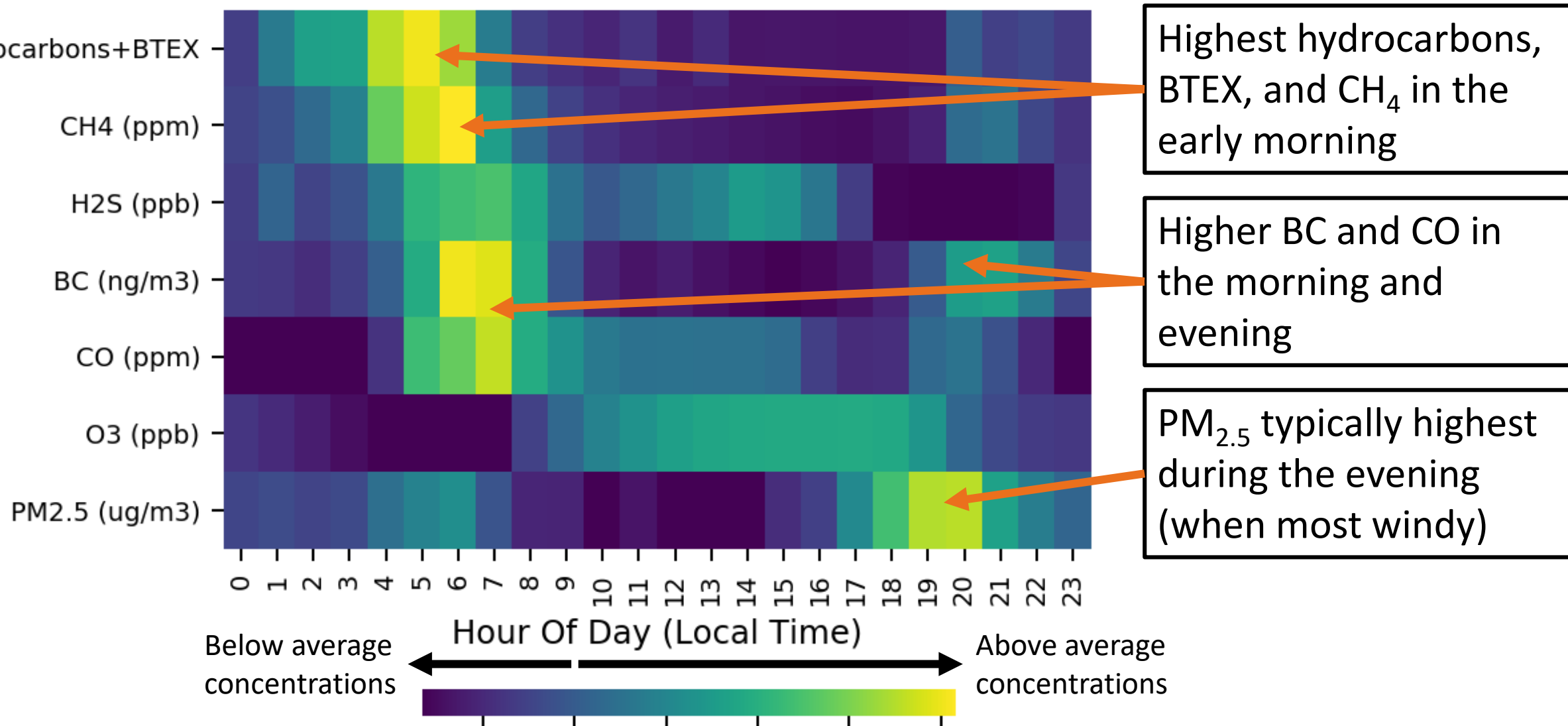
Air Monitoring Snapshot

Air Quality Index (AQI)

Hourly AQI (combined $PM_{2.5}$ and O_3) for the SNAPS measurement site(s) and nearby regional air monitoring stations are shown below (AQI, see AirNow for more information and full calculation methods). A description of AQI colors and values are shown in the table.



Hourly Pollutant Measurements



Data are preliminary. Final results will be published in the final report. 10



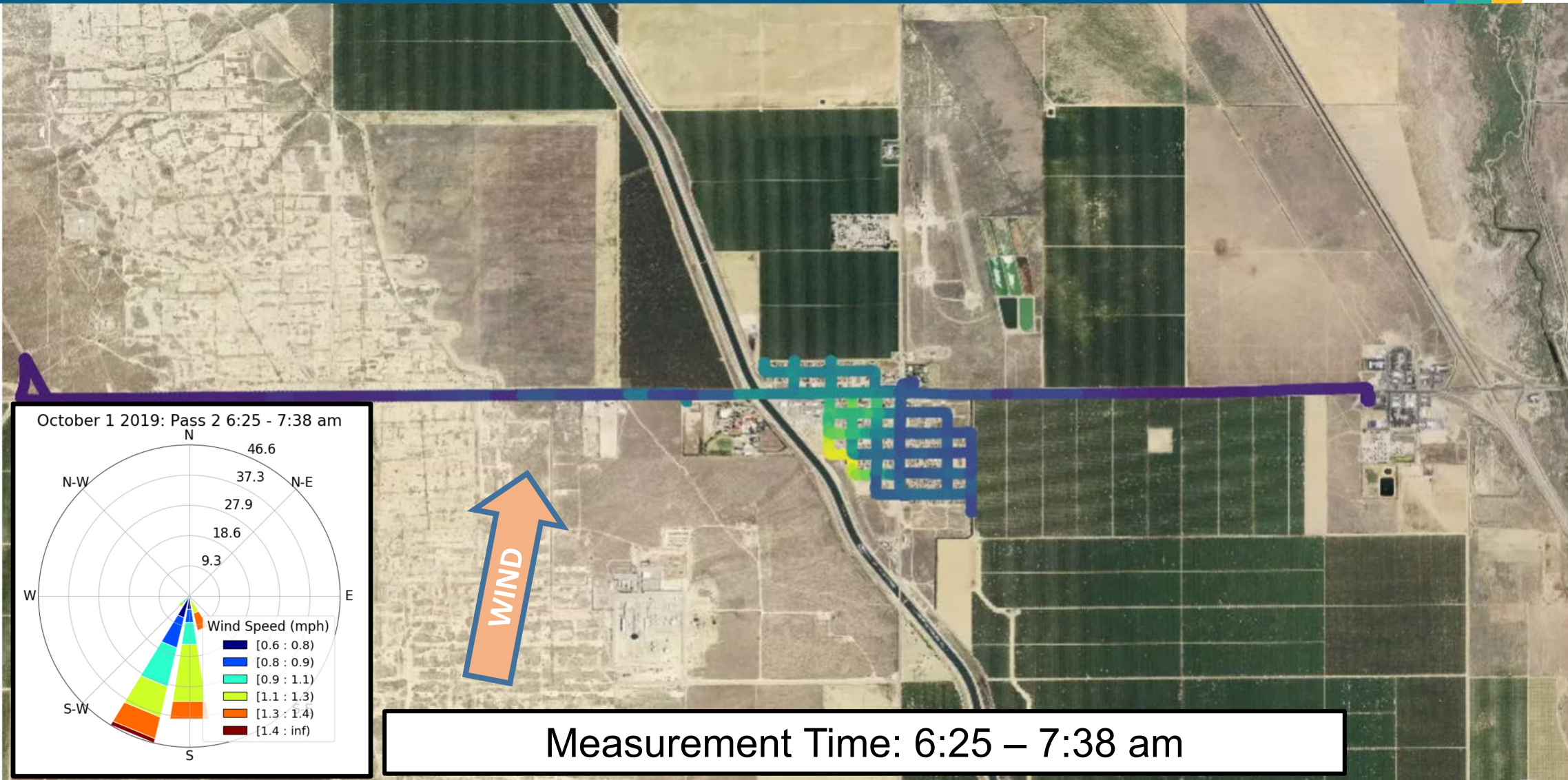
SNAPS Mobile Monitoring Platform



- Instruments housed within a vehicle
 - Measures CH_4 and H_2S every second
 - BTEX measurements every 15 minutes
- Monitoring along public roadways in and around Lost Hills
- Measurements are 'snapshots' in time
 - Multiple passes on streets of Lost Hills
 - Includes upwind measurement periods



Methane Mobile Monitoring (Oct 1st)



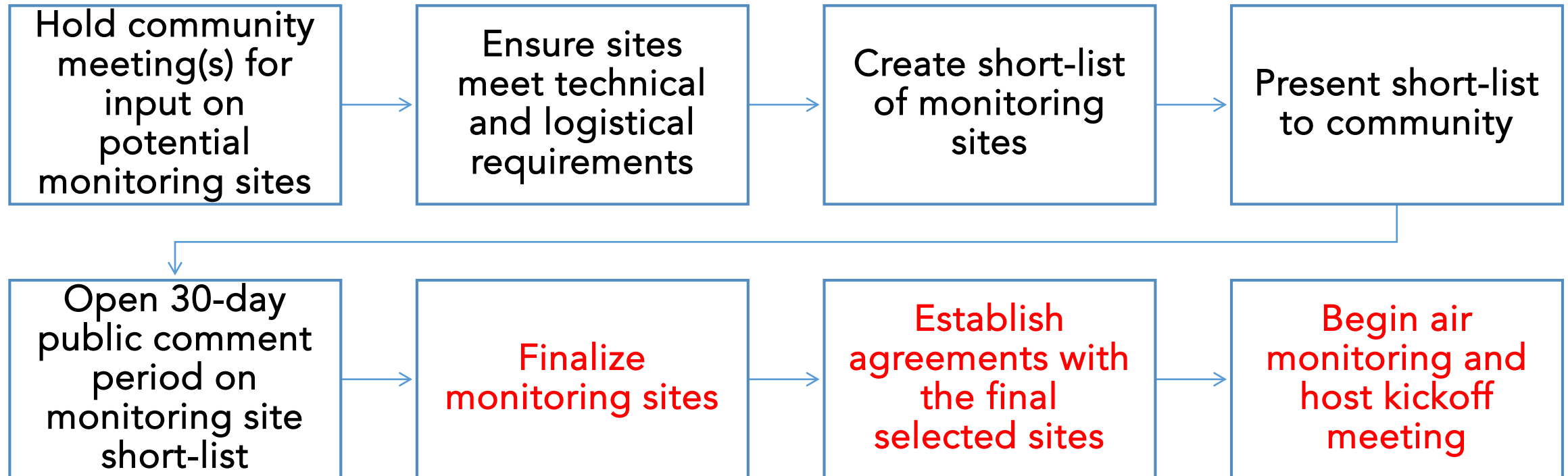
Methane concentrations vary around Lost Hills across space and time

****Data are preliminary. Final results will be published in the final report.**** 13

Baldwin Hills

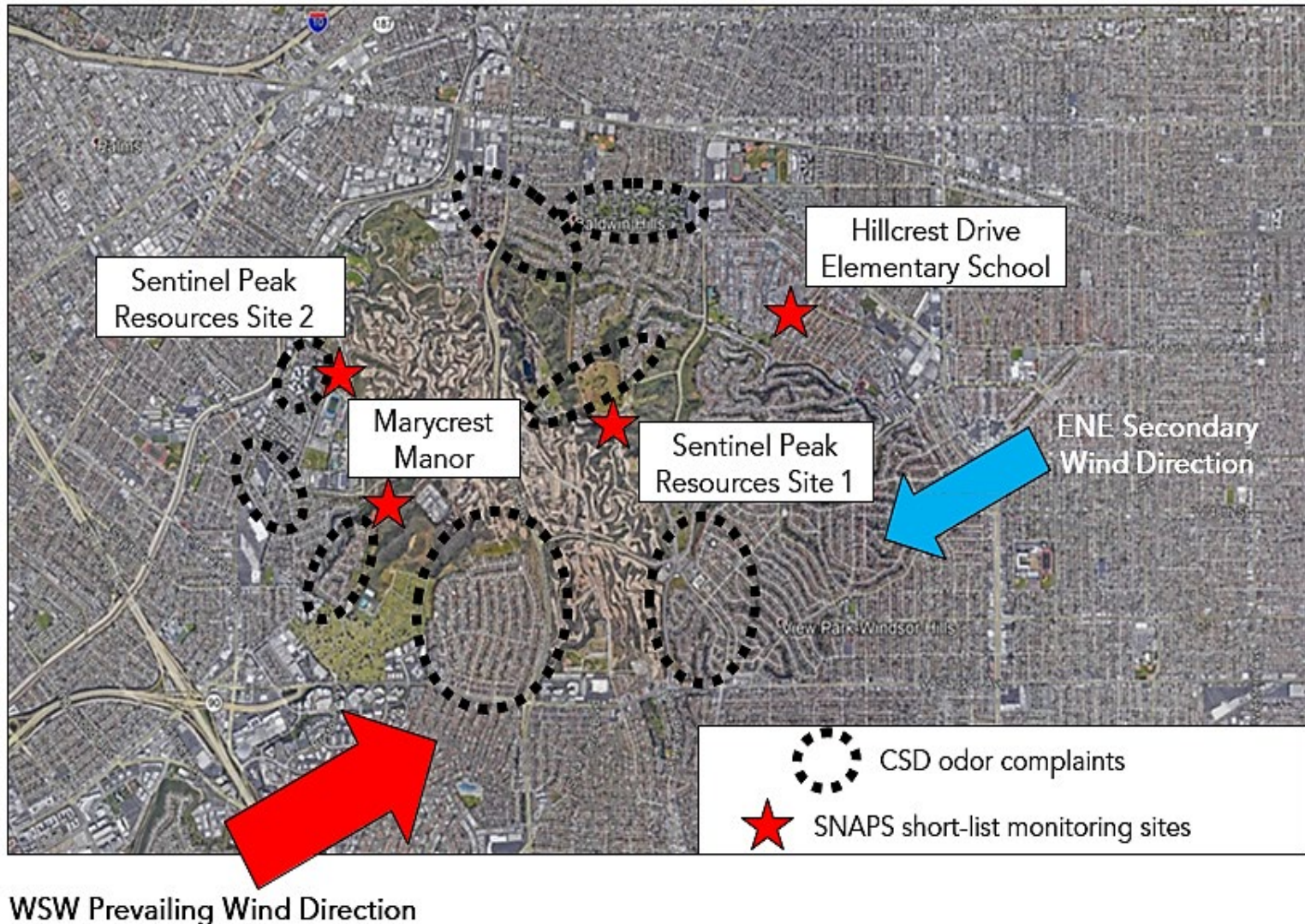


Baldwin Hills: Site Selection



Site Considerations

- Provides a safe working environment for CARB staff
- Positioned relative to the Inglewood Oil Field to provide representative and meaningful air monitoring results
- Provides adequate power, security, and space
- Allows regular site access for maintenance and operations



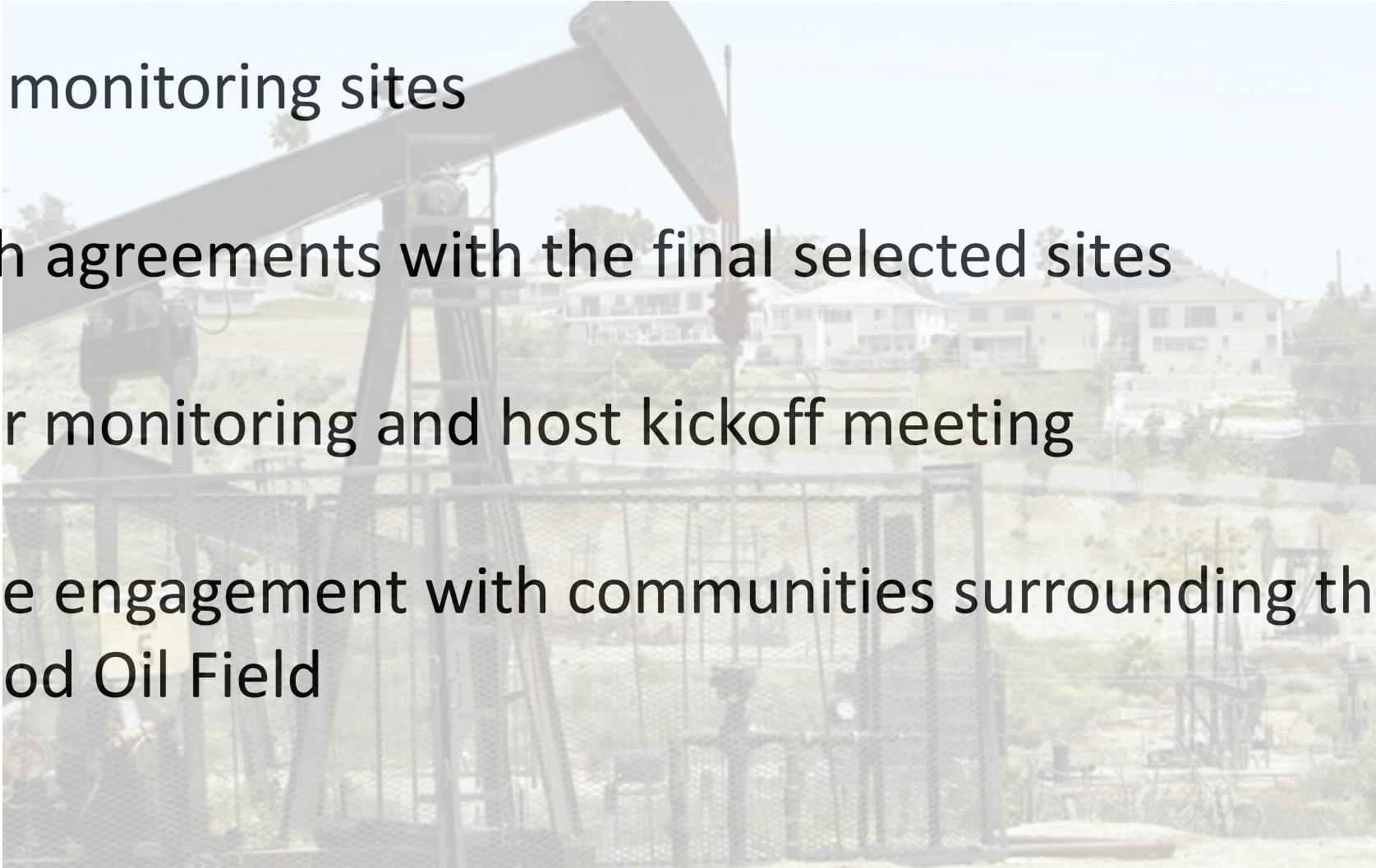
Potential Monitoring Site Short-List

- Sentinel Peak Resources Sites 1 and 2 (on Inglewood Oil Field)
- Marycrest Manor
- Hillcrest Drive Elementary School

- Compare short- and longer-term exposure levels to health-based guidance values
 - Acute, 8-hour, chronic Reference Exposure Levels (RELs)
 - Cancer potencies
- Characterize potential health risks
- Follow up on measured chemicals without existing guidance levels

Baldwin Hills: Next Steps

- Finalize monitoring sites
- Establish agreements with the final selected sites
- Begin air monitoring and host kickoff meeting
- Continue engagement with communities surrounding the Inglewood Oil Field



Resources and Contact Information



- Project webpage: <https://ww2.arb.ca.gov/our-work/programs/study-neighborhood-air-near-petroleum-sources>
- Visit project webpage to Subscribe and receive email updates
- Email us at SNAPS@arb.ca.gov
- Carolyn Lozo, Chief
Oil and Gas and Greenhouse Gas Mitigation Branch
California Air Resources Board
clozo@arb.ca.gov
(916) 445-1104

Questions?

Baldwin Hills Conservancy Board Meeting
July 2020

BALDWIN HILLS CONSERVANCY

5120 West Goldleaf Circle, Suite 290
Los Angeles, CA 90056
Phone: (323) 290-5270
www.bhc.ca.gov

Memorandum

To: Governing Board

From: David McNeill, Executive Officer

Date: July 17, 2020

Re: Item 8: Baldwin Hills CSD 2020 Update – Luis Perez, Oil and Gas Consultant, Los Angeles County Department of Regional Planning

Recommendation: No Action Required. PowerPoint overview the recent activities, current studies and proposed revisions under the Periodic Review for the Baldwin Hills Community Standards District. See Attached PPT

Background: In December 2008, the County of Los Angeles adopted a new set of standards to regulate the portion of the Inglewood Oil Field that is located in the unincorporated area of Los Angeles County. The standards are known as the Baldwin Hills Community Standards District (CSD). Section G.7 of the CSD requires that the County conduct a comprehensive review of the CSD at least every five years to determine if the provisions of the CSD are adequately protecting the health, safety, and general welfare. The review shall consider whether additional provisions should be added, appended, or removed and to evaluate if proven technological advances that would further reduce impacts of oil operations on neighboring land uses should be incorporated into the provisions of the CSD.

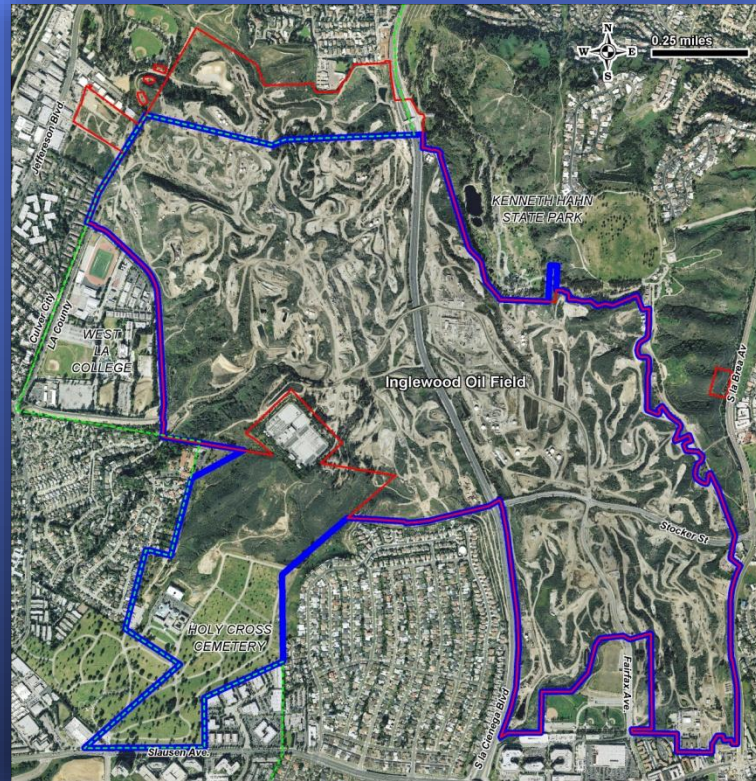
Key provisions of the CSD include:

- Community Advisory Panel (CAP) – Designed to enhance communication between community representatives, the county, and our company.
- Website and Annual Newsletter – Designed to provide the public updated information on oil field operations.
- Ombudsperson – New position dedicated to responding to the public's questions and concerns related to the oil field operations.
- Landscaping Plan (Sight) – Designed to create a visual screening along the outer boundary of the CSD and along public streets that run through the oil field.
- Quiet Mode Plan (Sound) – Identifies methods to prevent, reduce, or mitigate the noise generated by drilling at night.

- Air Monitoring Plan (Smell) – Requires installations of automatic alarms to detect if odorous natural gases exceed CSD thresholds.
- Community Alert Notification System (Safety) – Automatic notification system in the event of an emergency related to operations.
- Annual Drilling Plan – Identifies future oil field drilling activity and enhances the public's awareness of future planned activities.

Over the past 12 years, the CSD and the Community Advisory Panel have been beneficial tools for engaging the oil operator and educating the general public on issues related to oil production in the community.

Baldwin Hills Community Standards District (CSD)



Baldwin Hills Conservancy
July 17, 2020

Presentation by:
MRS Environmental

CSD Background

- **Adopted in 2008**
- **Provides for a number of conditions and provisions designed to mitigate impacts that include:**
 - **Ground movement monitoring**
 - **Noise Reduction**
 - **Emissions reductions**
 - **Odor Minimization**
 - **Community Alert Notification**
 - **Emergency Response**
 - **Air Monitoring**
 - **Oil Spill response Plan**
 - **Erosion Control**
 - **Meteorological Station**
 - **SIMQAP**
 - **Groundwater monitoring**
 - **Stormwater Pollution Prevention Plan**
 - **Periodic Review**

Periodic Review

CSD Provision 22.310.070 G	The county shall conduct a comprehensive review of the provisions of this section at least every five years to determine if the provisions of this section are adequately protecting the health, safety, and general welfare. Such reviews shall, among other things, consider whether additional provisions should be added, appended, or removed. One of the main goals of the Periodic Review shall be to evaluate if proven technological advances that would further reduce impacts of oil operations on neighboring land uses should be incorporated into the provisions of this section.
---	---

2008 - 2013



2014 - 2018



Periodic Review - Methodology

Comprehensive Review of Compliance Records and Plans

- **Compliance plans**
 - Plans submitted as required?
 - Plans current and updated as required?
- **Compliance records**
 - Record documentation complete?
 - Review of any compliance issues
- **Operations and maintenance records**
 - Record documentation complete?
 - Maintenance of equipment current?
 - Any operational or maintenance technological improvements feasible and applicable?



New Health Risk Assessment

- Last one conducted in 2008 as part of the EIR
- Changes in methodology by Office of Environmental Health Hazard Assessment (OEHHA)
- An updated HRA ensures that potential current health risks are adequately evaluated in view of the ongoing Periodic Review effort and comments received regarding potential health issues.
- Provides a modelling benchmark for comparison with results of ongoing efforts by the CARB as part of the SNAPS Study and the subsequent DPH Study.

New Health Risk Assessment

- Received all data requested from the operator and we completing review and processing of the information.
- Completing the processing of the meteorological data.
- Finalized the modeling protocols and modeling scenarios and is preparing the documentation.
- Completed the emissions spreadsheets to address equipment, fugitive, workover, drilling and vehicle toxic emissions.
- Established the modeling receptor grids and source grids for wells.
- MRS is continuing the preparation of the HRA report in the SCAQMD guidelines format.

Risk Assessment Results

CA Office of Environmental Health Hazard Assessment and SCAQMD Guidelines

Criteria Description	SCAQMD OEHHA Threshold Values	Baldwin Hills CSD EIR	STI Air Quality Study Oil Field	STI Air Quality Study Total	Mates IV*	SNAPS
Cancer Risk	10	7.5	6.7	340	367	?
Chronic Risk	1.0	0.02	<0.10	---	---	?
Acute Risk	1.0	0.7	<0.10	---	---	?

*Note that applying the revised OEHHA methodology to the modeled air toxics levels, the MATES IV estimated population weighted risk is 897 per million, an increase of about 2.5 times higher. It is important to note that this is not a change in exposure levels, and that the relative risks are not changed.

Questions/Comments

BALDWIN HILLS CONSERVANCY

5120 West Goldleaf Circle, Suite 290
Los Angeles, CA 90056
(323) 290-5270 Phone
www.bhc.ca.gov

Memorandum

To: Governing Board

From: David McNeill, Executive Officer

Date: July 17, 2020

Re: Item 8: Executive Officer Report

Projects Status Report

Please see Attachment # 1 for the updated Baldwin Hills Conservancy (BHC) Local Assistance/Capital Outlay Project Status Report.

Fiscal Update

Please see Attachment # 2 - BHC Summary Expenditure Sheet by Fund and Attachment #3 - BHC Prop 1, Prop 40, Prop 84 and Prop 68 Bond Cash Funds. The reports correspond with the end of fiscal month eleven (11) for the 2019-2020 Fiscal Year.

Operations Update

Under the LA County Stage 2 re-opening program, onsite staffing at the BHC office has been introduced at approximately 25% occupancy with a balance of 75% telework. Physical distancing protocols, signage and best practices for safety are being implemented at the office building consistent with the Los Angeles County Public Health directives. Additionally, at the close of June, the BHC Prop 68 Project Manager, Caroline Orija, was deployed for an anticipated 6-9 months of Contract Tracing duty under the COVID-19 emergency State Employee Redirect Order. The mandatory assignment will fulfill the Governor's objectives to meet the demands of local County Public Health Officials to track and monitor the pandemic in key areas of the state.

Legislative Update

2020-21 Budget – The California State budget was approved by the Governor on June 29th. The legislature authorized reductions in spending to address the State's anticipated two-year \$54.3 billion budget shortfall attributed to the economic fall out of the COVID-19 pandemic. Staff has submitted budget reductions of 5% from the BHC's Environmental License Plate Fund for operations (approximately \$20,000) and state employee compensation reductions have been implemented via a mandatory Personal Leave Program that allows permanent, full time employees to accrue or use two days of leave per month in exchange for a 10 percent reduction in pay. Both of the above will likely be in place for a minimum of two years.

**BHC Project Status Report
for 7/17/20**

Project Title	Grantee	Contract ID	Fund Source	Funds Allocated	Agreement Expiration	PROJECT STATUS
La Cienega Pedestrian Bridge Project	Los Angeles County Department of Parks and Recreation	BHC17003	Prop 40	\$3,900,000	12/31/2020	Three spans of the bridge installed in June; concrete deck poured; next for bridge are the landscape planter walls, irrigation, and landscaping; irrigation and landscaping underway on KHSRA side; grading in-progress on oil field side; Substantial completion planned for November 2020; Estimated project completion in December 2020; Complete project close-out expected March 2021.
Baldwin Hills Scenic Overlook Trail and Stormwater Improvement Project	Los Angeles Conservation Corps (LACC)	BHC1708	Prop 84	\$830,684	12/31/2020	Preparation of the habitat restoration areas completed June 2020; Crews are working on trail work and post/cable installation in Sections 6 & 7; Restorative planting planned in Fall; Plant establishment and care planned in Winter; Project completion expected December 2020; Complete project close-out expected March 2021.

**BHC Project Status Report
for 7/17/20**

Project Title	Grantee	Contract ID	Fund Source	Funds Allocated	Agreement Expiration	PROJECT STATUS
Water Capture Project for Yvonne B. Burke Sports Complex	California Conservation Corps Foundation (CCCCF)	BHC1800	Prop 1	\$1,500,000	1/31/2021	Geotechnical Study delivered January 2020; Construction documents being reviewed with engineer and LA County Parks Planning; 2nd community outreach meeting planned for March 2020, was postponed due to State-mandated closures for Covid-19; Grantee plans to ask for a term extension this Summer; Original Project Completion expected January 2021 with Complete project close-out expected April 2021.

BOND CASH FUNDS**Bond Cash - As Of 6/29/2020**

COMMERCIAL PAPER TE	CASH ALLOCATED	EXPENDITURES	BALANCE
PROP 68: 6088	\$110,000.00	\$89,310.11	\$20,689.89

2015 COMMERCIAL PAPER TE	CASH ALLOCATED	EXPENDITURES	BALANCE
PROP 84: 6051	\$4,027,819.00	\$3,961,905.39	\$3,961,905.39
PROP 40: 6029	\$6,911,320.92	\$6,779,698.45	\$131,622.47
PROP 1: 6083	\$1,995,316.93	\$1,943,951.99	\$51,364.94

All figures are derived from the Agency Bonds Consolidated Reporting System v1.3 (ABCRS)

Cover of BHC Expenditure 19-20 FM11

<u>As of 5/31/2020</u>	<u>Activity #</u>	<u>Original Appropriation</u>	<u>Remaining Appropriation</u>	<u>EXP + ENC</u>	<u>BALANCE</u>	<u>Encumber by</u>	<u>Liquidate by</u>
<u>ELPF - #0140, Support</u>							
2019 Budget Act Item 3835-001-0140	10001	\$ 375,000.00	\$ 388,000.00	\$ 333,698.88	\$ 54,301.12	06/30/20	06/30/22
<u>Prop 40 - #6029, Support</u>							
2019 Budget Act Item 3835-001-6029	10005	\$ 135,000.00	\$ 141,000.00	\$ 93,724.25	\$ 47,275.75	06/30/20	06/30/22
<u>Prop 84 - #6051, Support*</u>							
2019 Budget Act Item 3835-001-6051	10009	\$ 110,000.00	\$ 111,000.00	\$ 42,835.19	\$ 68,164.81	06/30/20	06/30/22
<u>Prop 1 - #6083, Support</u>							
2019 Budget Act Item 3835-001-6083	10006	\$ 111,000.00	\$ 116,000.00	\$ 38,954.66	\$ 77,045.34	06/30/20	06/30/22
<u>Prop 68 - #6088, Support</u>							
2019 Budget Act Item 3835-001-6088	10010	\$ 184,000.00	\$ 184,000.00	\$ 86,208.13	\$ 97,791.87	06/30/20	06/30/22
Total Support Balance:					\$ 344,578.89		

<u>Prop 1 - #6083, Local Assistance/ Capital Outlay</u>							
2019 Budget Act Item 3835-101-6083	20011	\$ 1,300,000.00	\$ 1,300,000.00	\$ -	\$ 1,300,000.00	06/30/22	06/30/24
2018 Budget Act Item 3835-101-6083	20009	\$ 2,000,000.00	\$ 2,000,000.00		\$ 2,000,000.00	06/30/21	06/30/23
2017 Budget Act Item 3835-101-6083	20008	\$ 2,000,000.00	\$ 2,000,000.00	\$ -	\$ 2,000,000.00	06/30/20	06/30/22
2016 Budget Act Item 3835-101-6083	20006	\$ 2,000,000.00	\$ 2,000,000.00	\$ 2,000,000.00	\$ -	06/30/22	06/30/24
2015 Budget Act Item 3835-101-6083	20004	\$ 2,000,000.00	\$ 473,149.28	\$ 82,149.28	\$ 391,000.00	06/30/21	06/30/23
Total Prop 1 Balance:					\$ 5,691,000.00		

Cover of BHC Expenditure 19-20 FM11

Prop 40 - #6029, Local Assistance							
2016 Budget Act Item 3835-101-6029	20007	\$ 6,025,000.00	\$ 6,025,000.00	\$ -	\$ 6,025,000.00	06/30/22	06/30/24
2015 Budget Act Item 3835-301-6029	20005	\$ 11,604,000.00	\$ 4,988,792.00	\$ 2,059,087.00	\$ 2,929,705.00	06/30/21	06/30/23
Total Prop 40 Balance:					\$ 8,954,705.00		
Prop 68 - #6088, Local Assistance/Capital Outlay							
2019 Budget Act Item 3835-101-6088	20013	\$ 1,100,000.00	\$ 1,100,000.00	\$ -	\$ 1,100,000.00	06/30/22	06/30/24
2018 Budget Act Item 3835-101-6088	20012	\$ 1,100,000.00	\$ 1,100,000.00	\$ -	\$ 1,100,000.00	06/30/20	06/30/22
Total Prop 68 Balance:					\$ 2,200,000.00		
Prop 84 - #6051, Capital Outlay							
2015 Budget Act Item 3835-301-6051	30004	\$ 2,118,000.00	\$ 1,603,972.74	\$ 509,140.64	\$ 1,094,832.10	06/30/21	06/30/23
2014 Budget Act Item 3835-301-6051	30003	\$ 3,120,000.00	\$ 795,438.00	\$ 381,853.26	\$ 413,584.74	06/30/20	06/30/22
Total Prop 84 Balance:					\$ 1,508,416.84		

Prop 1 - #6083
 Prop 40 - #6029
 Prop 68 - #6088
 Prop 84 - #6051
 ELPF - #0140

Water Quality, Supply, and Infrastructure Improvement Act of 2014, Chapter 188, Statutes of 2014
 California Clean Water, Clean Air, Safe Neighborhood Parks, and Coastal Protection Act of 2001, Chapter 875, Statutes of 2001
 California Drought, Water, Parks, Climate, Coastal Protection, and Outdoor Access For All Bond Act of 2017, Chapter 852, Statutes of 2017
 Safe Drinking Water, Water Quality and Supply, Flood Control, River and Coastal Protection Bond Act of 2006
 California Environmental License Plate Fund of 1979, Chapter 1105