

1,729
surveys
collected

during

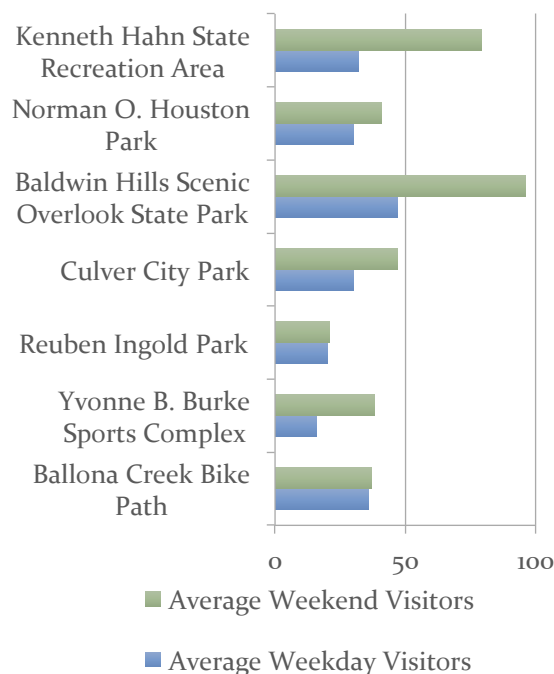
2
years

Surveys were conducted in-person by 38 undergraduate research assistants over 1,934 field hours.

The surveys were administered at the following parks:

- Kenneth Hahn State Recreation Area
- Norman O. Houston Park
- Baldwin Hills Scenic Overlook State Park
- Culver City Park
- Reuben Ingold Park
- Yvonne B. Burke Sports Complex
- Ballona Creek Bike Path

Average Park Visitation Rates



75% of individuals surveyed most frequently go to only one park in the Baldwin Hills Parklands

Baldwin Hills Scenic Overlook State Park and Kenneth Hahn SRA have the highest visitation.

For more information visit:
<http://BHC.ca.gov/VisitorUse>

The Value of Urban Parks: A Visitor Use Survey of the Baldwin Hills Parklands

A 2015-2017 research study designed to understand visitor use patterns in the Baldwin Hills Parklands and to inform:

- Baldwin Hills Parklands Master Plan
- Park to Playa Project
- Land Development
- Restoration Efforts
- Resource Allocation

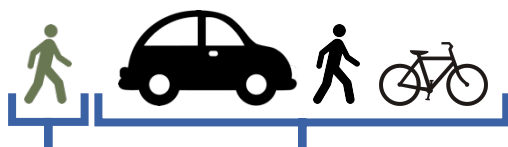
Conducted by:

LMU|LA

Center for Urban Resilience

Supported by:





10% of visitors walked to the park and 3% biked.

85% of responders drove to the park but 22% would like to walk and 19% would like to bike.

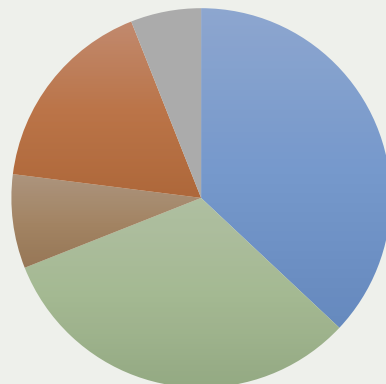


90% of park goers were unaware of the free The Link – Baldwin Hills Parklands Shuttle



However, after being told about The Link shuttle, 52% of park goers said they would like to take it.

Racial Identity of Respondents

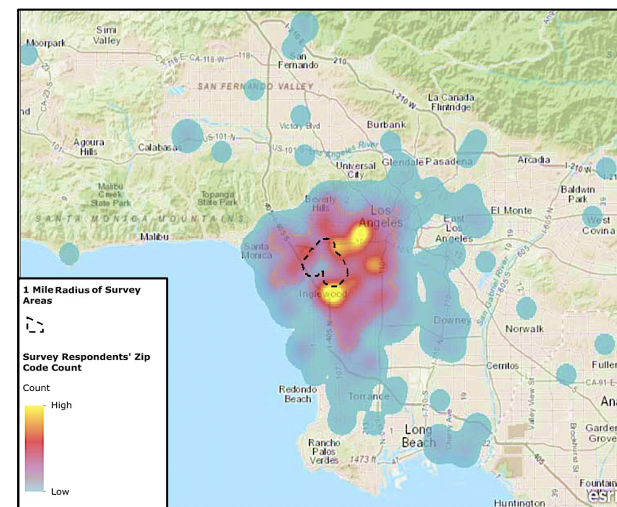


- White/Caucasian (37%)
- Black/African American (32%)
- Asian (8%)
- Other (17%)
- No Response (6%)

The average Baldwin Hills Parkland visitor is 35 years old and makes less than \$80,000 annually. 97% speak English and 30% speak Spanish.

Surprisingly, the above visitor profile does not reflect the demographics of the immediately surrounding census tracts. More outreach should be targeted to nearby underrepresented populations including those identifying as African American or Latinx.

Respondents' Zip Codes



The Baldwin Hills Parklands are an integral part of the greater Los Angeles community. Most respondents live outside the Parklands' one-mile local radius.



89% of respondents feel safe in the Baldwin Hills Parklands and 74% feel peaceful after visiting.

11% of users reported that they avoid certain areas of the Parklands. Safety and feeling "too crowded" were the main concerns.